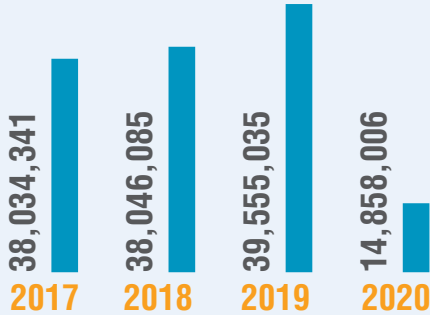




25,202,120
Passengers total



740,879 / 24,461,241
International versus domestic passengers

2019	International	3,296,562
	Domestic	36,258,473
2020	International	860,147
	Domestic	13,997,859

741



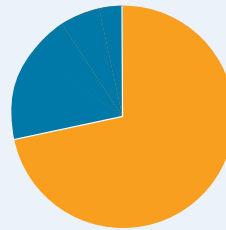
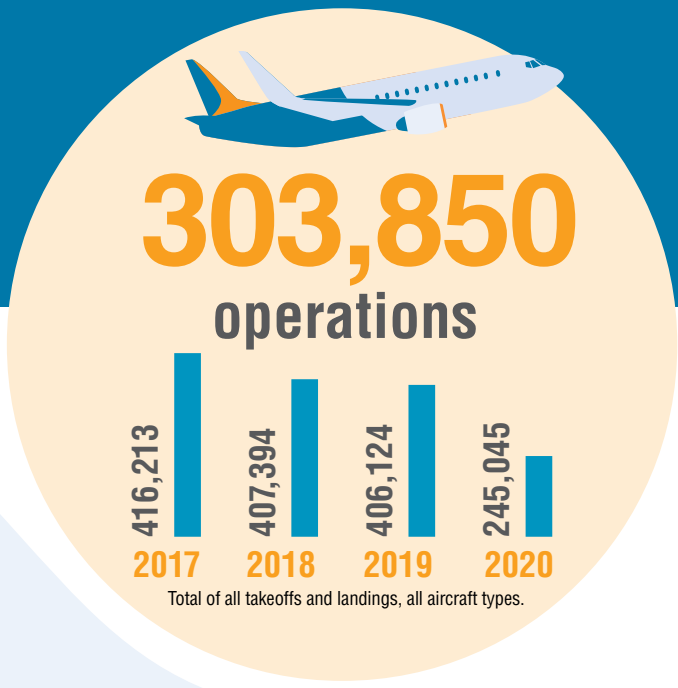
Average daily passenger aircraft operations

2019 1,020 **2020** 598

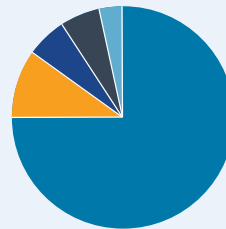


234,747
Total cargo

2019 228,964
2020 203,697



33%
Connecting % of total enplanements
2019 37% **2020** 35%



Airline passenger market share

71.97% Delta	4.72% Southwest
9.95% Sun Country	3.60% United
5.46% American	



137
Non-stop destinations
2019 167 **2020** 119