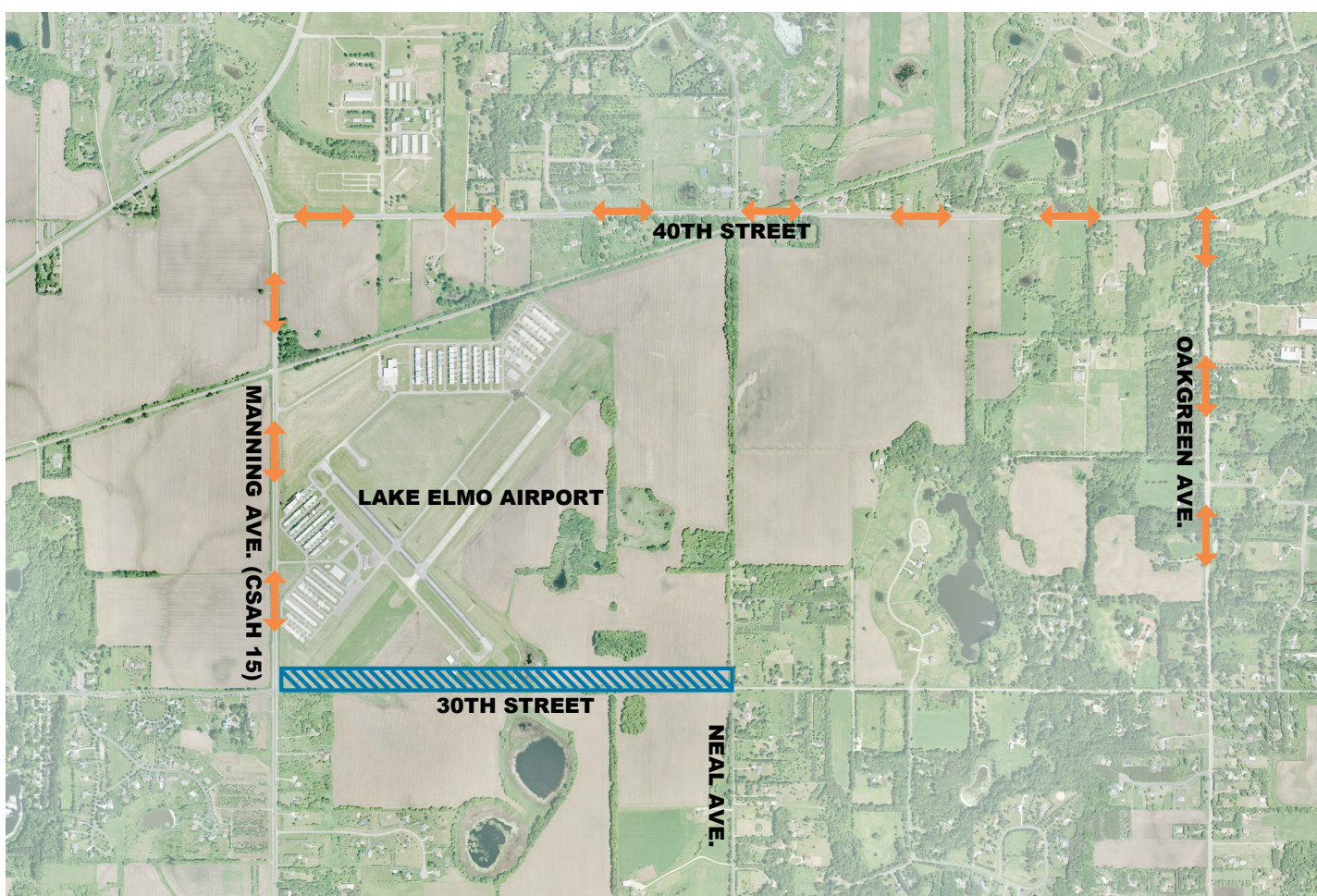




Lake Elmo Airport

CONSTRUCTION NEWS



DETOUR: JULY 6 TO JULY 18, 2020

30th Street CLOSED from Manning Ave to Neal Ave.
Follow posted detour routes.

For 30th Street Closure Questions Contact:

SEH - Lindsay Reidt - Ireidt@sehinc.com

MAC - Mike Wilson - mike.wilson@mspmac.org

For Project and Construction Information Visit:

metroairports.org/general-aviation/airports/lake-elmo/lake-elmo-airport-construction