



## MEETING AGENDA

**May 22, 2023**

**3 p.m.**

**Baytown Township Hall**

**4020 McDonald Dr N, Stillwater, MN 55082**

1. Welcome and Introductions -Information (~2 min.)
2. Approval of Meeting Minutes for 2-27-2023 -Action (~2 min.)
3. Airport Manager Update -Information (~3 min.)
4. Airport User Spotlight - Information (~5 min.)
5. Community Spotlight -Information (~5 min.)
6. Aircraft Noise Overview -Information (~15 min.)
  - Aircraft Noise Basics
  - Summary of Q1 2023 Aircraft Operations & Noise Complaints
7. Airport Tour Discussion -Information (~5 min.)
8. Public Comment (3-min. per comment) -Information (~6 min.)
9. Member Comment -Information (~10 min.)
  - Upcoming Community Events
10. Review LEAAC meeting schedule -Information (~2 min.)
  - Next meeting dates: August 28 and November 27, 2023
11. Adjourn

*(~Noted discussion times are approximate)*

*For assistance with meeting accommodations, please contact:*

*Jennifer Lewis, MAC Community Relations Coordinator*

*[Jennifer.lewis@mspmact.org](mailto:Jennifer.lewis@mspmact.org) or 612-725-6327*

**3275 Manning Avenue, Box 2, Lake Elmo, Minnesota 55042**

Philip Tiedeman, MAC Airport Manager • [Philip.Tiedeman@mspmact.org](mailto:Philip.Tiedeman@mspmact.org) • 763-717-0001





**METROPOLITAN AIRPORTS COMMISSION  
LAKE ELMO AIRPORT ADVISORY COMMISSION  
DRAFT MEETING MINUTES**

Monday, February 27, 2023, 3:00 p.m.

Baytown Township Hall  
4020 McDonald Drive North  
Stillwater, MN 55082

---

The meeting started at 3:10 p.m. In attendance were:

**Representatives:** D. Chase; At-Large; D. Elder, Washington, County; P. Evenson, EAA Chapter 54; M. Gunderson, EAA Chapter 54; M. Hanson, City of Bayport; J. Holtz; City of Lake Elmo; G. Kreisel, Washington County; M. McComber, City of Oak Park Heights; P. Moosbrugger, West Lakeland Township; L. Peterson, At-Large; R. Weyrauch, Baytown Township; J. Thomas, At-Large; D. Weiler, At-Large

**MAC Staff:** J. Harris, Director – Reliever Airports; J. Lewis, Community Relations Coordinator; J. Egan, Assistant Manager, Community Relations; P. Tiedeman, Airport Manager, Lake Elmo Airport; K. Verdeja, Administrative Specialist

**Other:** J. Fieldseth, member of the public; Elden, Lake Elmo Airport User

A quorum of at least three User Representatives and three Public Representatives was established.

**1. Welcome and Introductions - Information**

**Luke Peterson, Co-Chair**, called the meeting to order at 3:10 pm. There was a total of 20 participants. He gave an overview of the agenda. Chair Peterson invited attendees to introduce themselves.

**2. Approval of Meeting Minutes for 11-28-2022**

**Chair Peterson** opened the discussion regarding approving the minutes from the commission meeting on November 28, 2022. There was no discussion.

**Representative Thomas moved and Representative McComber seconded to:  
Approve the Minutes from the November 28, 2022 Meeting as presented.**

**The motion passed by unanimous vote.**

3. **LEAAC Commission Purpose**

**Chair Peterson** led a discussion regarding the Goal and Purpose of the Lake Elmo Airport Advisory Commission (LEAAC).

4. **Proposed 2023-2024 Work Plan**

**Chair Peterson** reviewed the proposed Work Plan for the Commission for 2023-2024.

**Representative McComber moved and Representative Gunderson seconded to:  
Accept the 2023-2024 Work Plan of the Commission as presented.**

**The motion passed by unanimous vote.**

5. **Community Member Co-Chair Election**

**Chair Peterson** opened the business item to nominations for the role of Chair of the Community Group. Representative McComber was the only nomination for this position.

**Representative Hanson moved to:  
Elect Representative McComber as the Community Representative Co-Chair**

**The motion passed by unanimous vote.**

With a unanimous vote, Representative McComber was elected as the Chair of the Community Group.

6. **User Member Co-Chair Election**

**Mary McComber**, the newly elected **Community Representative Co-Chair**, opened the item to nominations and discussion for the role of Chair of the User Group. Representative Peterson was the only nomination for this position.

**Representative Evenson moved and Representative Thomas seconded to:  
Elect Representative Peterson as the User Representative Co-Chair**

**The motion passed by unanimous vote.**

With a unanimous vote, Representative Peterson was elected as the Chair of the User Group.

**Chair Peterson** offered **Co-Chair McComber** the duties of the chair for the remainder of the meeting. Co-Chair McComber declined the offer.

7. **Airport Manager Update**

**Philip Tiedeman, Manager – Lake Elmo Airport** reviewed the multiple winter weather events that have taken place so far this season. He also reviewed the construction items over the last few years: 2020 rerouted 30<sup>th</sup> Street N. to accommodate the airport runway realignment; 2021 focused on grading the new pavement and drainage; 2022 was when impacts to the

airport users were really noticed with the paving of new surfaces, adjusting layouts and airport closures. Mr. Tiedeman continued to explain that in 2023 the construction will be wrapping up by finishing Phase 4, which entails converting the old runway to a taxiway and paving the final connector taxiways and some additional service roadwork.

Mr. Tiedeman explained that along with Joe Harris, Director – Reliever Airports and Chair Luke Peterson, they presented an informational update to the Metropolitan Airports Commission on January 21, 2023. The Committee and Commission meetings are open to the public and can also be viewed live on their website. The presentation can be viewed by going to <https://metroairports.org/resources/commission-meetings>.

#### **8. Airport User and Community Spotlights**

**Chair Peterson** introduced an airport user, **Elden**, who retired after a career as a biomedical veterinary pathologist. He lives in a nearby city and has used Lake Elmo Airport as the home base for his experimental airplane.

**Elden** built a Vans Aircraft RV-4 in 1989 (the first RV-4 built in Minnesota) to participate in a combination of his family's farming enterprises, pursue his hobby of classic restorations, and volunteer church mission projects while maintaining a demanding laboratory career. He has supported the local EAA chapter by flying Young Eagles out of the farm strip.

**Chair Peterson** showed aerial photos of the Lake Elmo airport in 1957 and 1964 then 2020 and 2022. He also highlighted the airports surrounding communities.

#### **9. Q4 2022 Aircraft Operations and Noise Complaint Trends**

**Jennifer Lewis, Technical Advisor**, reviewed the process by which complaints are taken at the Metropolitan Airports Commission regarding aircraft. She stated there were 606 noise complaints from three locations and three nighttime complaints from two nighttime locations in 2022. There were 7,272 operations and 36 nighttime operations recorded for Lake Elmo Airport during the quarter.

She reviewed the wind summary during Quarter 4 from 2022 and 2021. She also compared the aircraft operations and noise complaints from the same time frame.

**Ms. Lewis** explained that more detail about complaints and operations is available at [www.metroairports.org/community-connection/aircraft-noise](http://www.metroairports.org/community-connection/aircraft-noise). She also gave information about accessing MAC FlightTracker at [www.macnoms.com](http://www.macnoms.com).

#### **10. Public Comment**

**Chair Peterson** introduced the public comment period and reminded attendees of the ground rules for public comment. **Representative Evenson** commented on the new flight approach path.

## **11. Member Perspectives**

**Co-Chair Peterson** explained the usefulness of this agenda item.

**Representative Weyrauch** asked if incident reports could be added to future meeting packets.

**Representative McComber** asked for an updated roster of the membership.

**Representative Weiler** asked for more information from the flight instructors.

**Representative Evenson** asked if there were more security plans at the airport, mentioning children playing on a snow pile at the airport. **Chair Peterson** and **Mr. Tiedeman** discussed bringing this topic forward for future discussion.

**Representative Moosbrugger** asked for copies of the PowerPoint presentation.

## **12. Review LEAAC Meeting Schedule**

**Chair Peterson** led a discussion regarding the upcoming meetings for the calendar year.

The next LEAAC Meeting will be held on May 22, 2023 at 3:00 pm at a location to be determined.

The other meeting dates are August 28 and November 27, 2023. Meeting materials are published here once they are available: <https://metroairports.org/leaac>

The meeting was adjourned at 4:28 p.m.

# Providing Exceptional Airport Experiences so Minnesota Thrives

Metropolitan Airports Commission



The Metropolitan Airports Commission (MAC) is a valuable resource for anyone who has questions about aviation in the Twin Cities metro area, especially those interested in airport events, flight activity at any MAC airport, and/or aircraft operations data.

## What is the Metropolitan Airports Commission (MAC)?

The MAC is a public corporation governed by a board of commissioners that reports to the Governor of Minnesota and its state Legislature. The MAC is charged with managing a system of seven airports within the Twin Cities metropolitan area. (See map for their locations.)

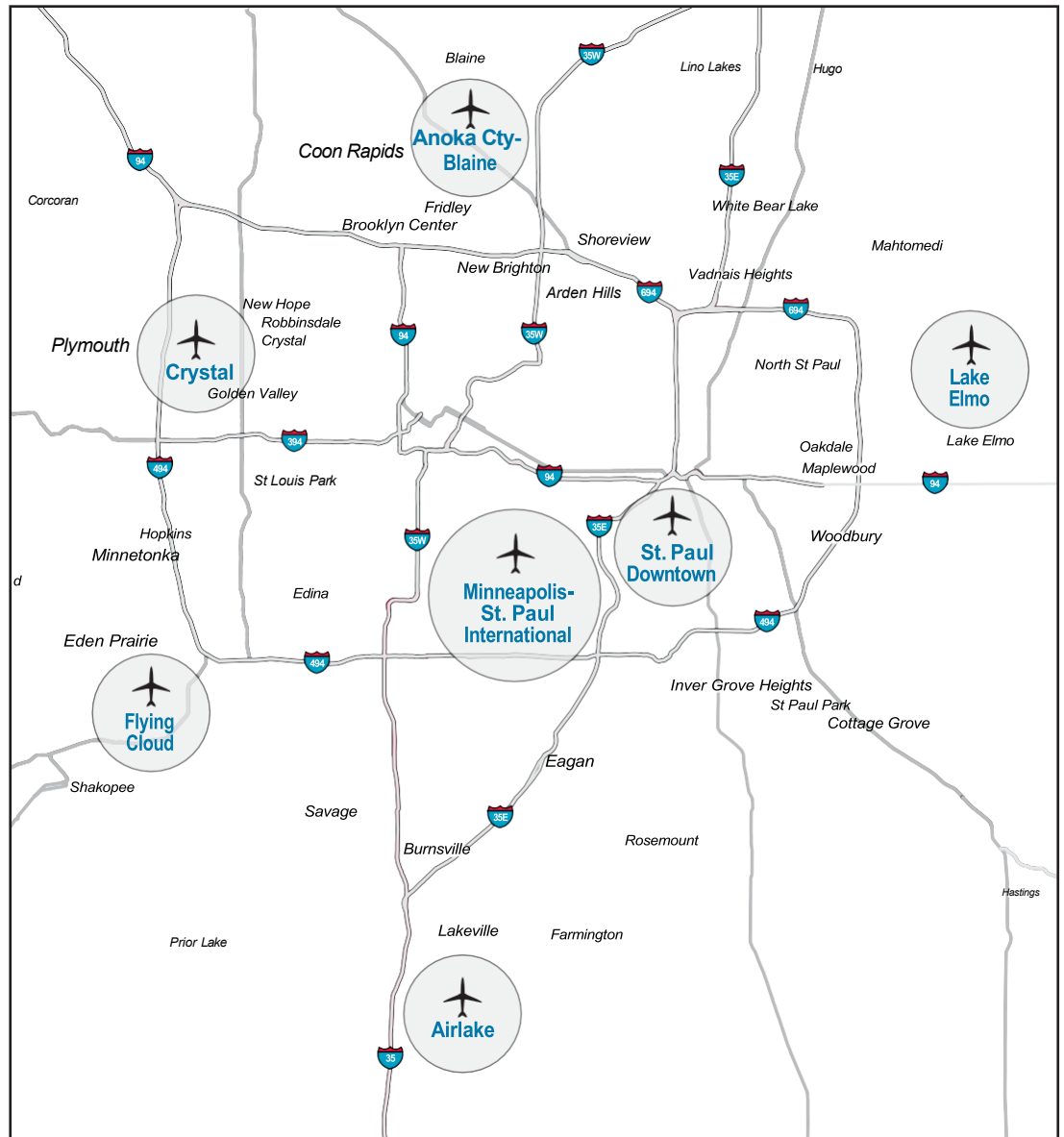


## Who regulates aircraft activity?

The Federal Aviation Administration (FAA) regulates all aircraft activity.

The FAA's Air Traffic Control (ATC) is solely responsible for directing aircraft on the ground and in the air. ATC's highest priority is the safe and efficient movement of aircraft. Air traffic control procedures help them maintain a systematic flow and keep planes at safe distances from one another. The MAC has no jurisdiction over aircraft activity.

The FAA also regulates the maximum noise levels aircraft are legally allowed to generate. These levels are categorized as "stages." Currently, aircraft flying into and out of any MAC airport must meet Stages 3, 4, and 5; Stage 5 is the quietest.





# Learn More About MAC Airports: [metroairports.org](http://metroairports.org) or call 612-726-9411

## Flight Tracking

The MAC collects flight tracks related to activity at each of its airports and publishes it for public-use.

To learn more about specific aircraft operations, we invite you to use our **FlightTracker tool available at [macnoms.com](http://macnoms.com)**.

The data found here are the same details we use to assess aircraft activity in the MAC's Community Relations Office.

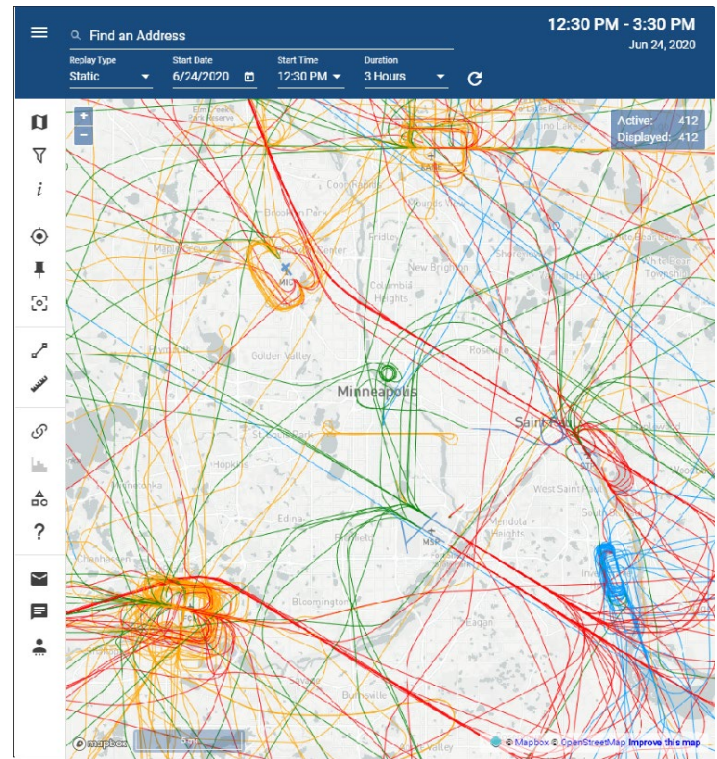


Figure 1-MAC FlightTracker available at: [www.macnoms.com](http://www.macnoms.com)

## Pilots and Noise Abatement

Pilots are responsible for the safe operation of any aircraft they fly. While their primary focus is always safety, there are ways pilots can help reduce their impact over noise-sensitive areas.

Each MAC-owned airport is open for public-use 24-hours a day. The MAC cannot restrict aircraft operations (such as a mandatory nighttime curfew), however, noise abatement plans and procedures are available to help pilots fly as quietly as possible. These plans and procedures were developed by the MAC through collaboration with pilots, the FAA, and communities surrounding each airport. In addition, MAC staff works with pilots, airport tenants and the FAA regularly to underscore the importance of noise abatement for the surrounding communities.

Noise abatement plans and procedures, though voluntary, have proven to be effective measures for keeping noise levels as low as possible. Noise abatement plans for MAC-owned airports can be found at <https://metroairports.org/our-airports>.

## Aircraft Noise Complaints

Residents can contact the MAC and ask questions or file a complaint about specific flight activity via the internet or by phone (see above). It's important to know that aircraft noise complaints are used for analysis only and cannot change how the airport operates. Where aircraft fly, as well as their associated noise levels, depends on factors such as wind and weather, the number of arrivals and departures, the time of day, construction activity and other conditions, all which play a part in how an airport operates and how busy the airspace may be at any given time.

Aircraft noise and activity complaints are used in conjunction with flight data to corroborate specific events or identify possible trends. Some city governments also use complaints to gauge the level of concern about aircraft noise in their communities.

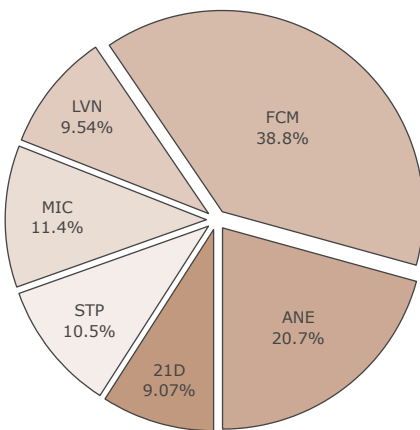
More details about the MAC, including aircraft operations data, may be found at [metroairports.org](http://metroairports.org)



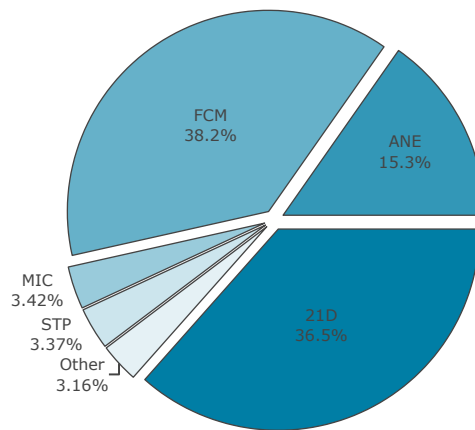
# Metropolitan Airports Commission (MAC) Reliever Airport Operations and Noise Complaint Report



AIRCRAFT OPERATIONS



NOISE COMPLAINTS

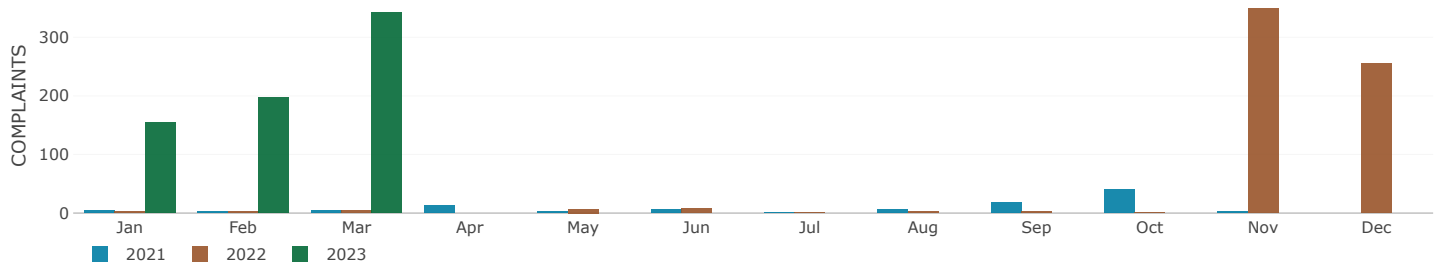
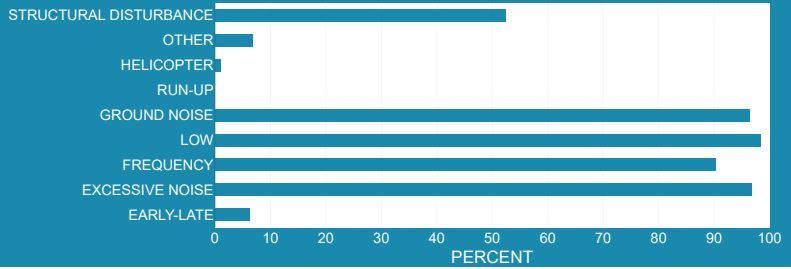




COMPLAINTS

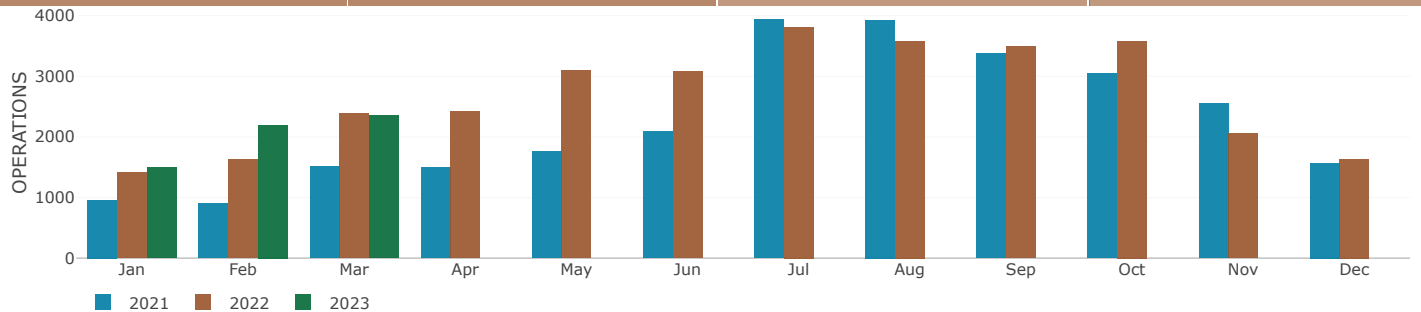
<b>2023</b>	<b>694</b> COMPLAINTS	<b>6</b> LOCATIONS	<b>15</b> NIGHTTIME COMPLAINTS	<b>5</b> NIGHTTIME HOUSEHOLDS
<b>2022</b>	<b>10</b> COMPLAINTS	<b>4</b> LOCATIONS	<b>5</b> NIGHTTIME COMPLAINTS	<b>4</b> NIGHTTIME HOUSEHOLDS

COMPLAINT DESCRIPTORS



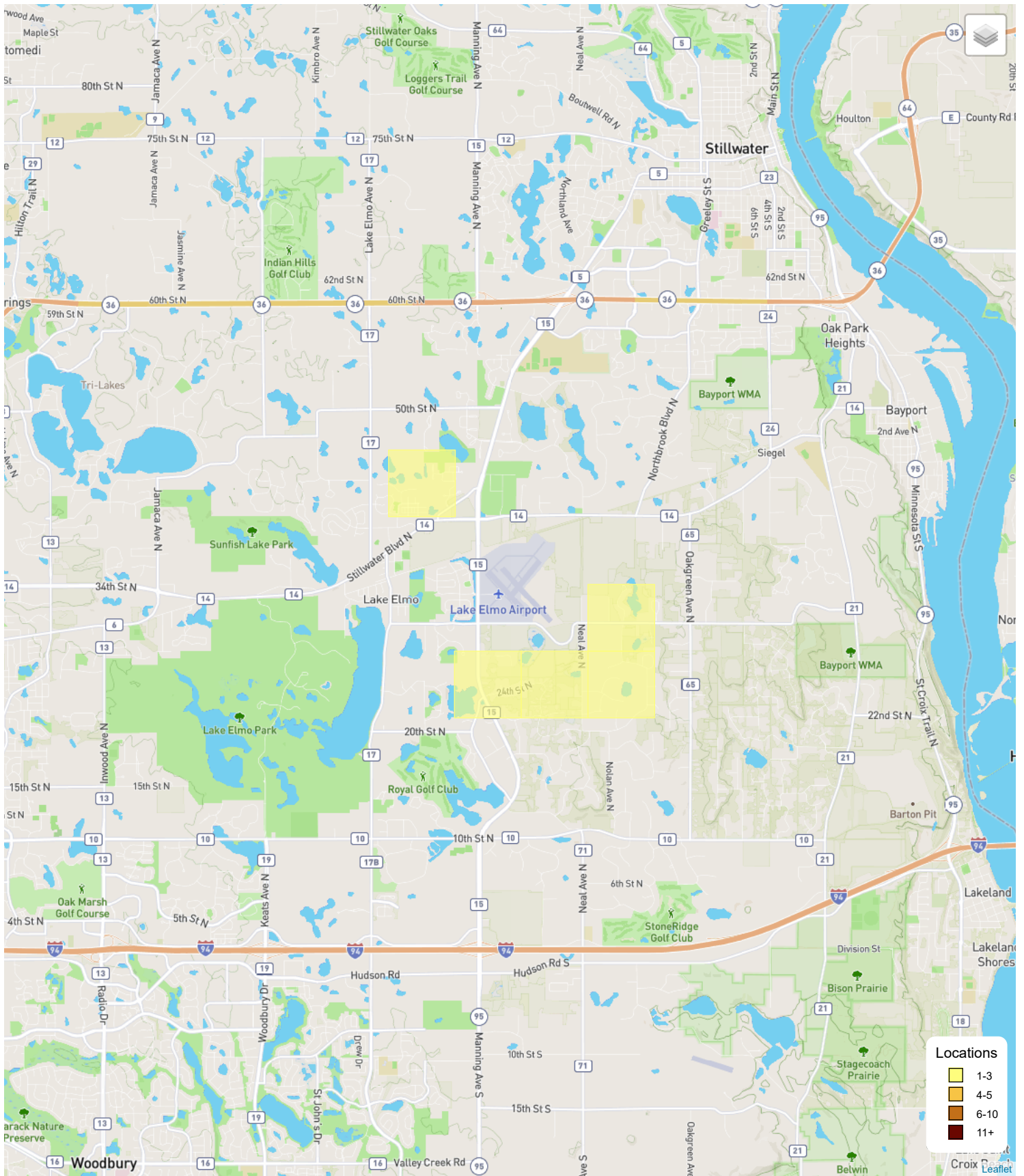
OPERATIONS

<b>2023</b>		<b>2022</b>	
<b>6,046</b> OPERATIONS	<b>25</b> NIGHTTIME OPERATIONS	<b>5,430</b> OPERATIONS	<b>29</b> NIGHTTIME OPERATIONS



AIRCRAFT TYPE	OPERATIONS	%	COMPLAINTS	%
JET	0	0.0 %	2	0.3 %
HELICOPTER	116	1.9 %	7	1.0 %
PISTON	5,751	95.1 %	666	96.0 %
TURBO-PROP	14	0.2 %	5	0.7 %
UNKNOWN	165	2.7 %	14	2.0 %
RUN-UP	0	0.0 %	0	0.0 %

# Lake Elmo Airport (21D) - COMPLAINTS HEATMAP

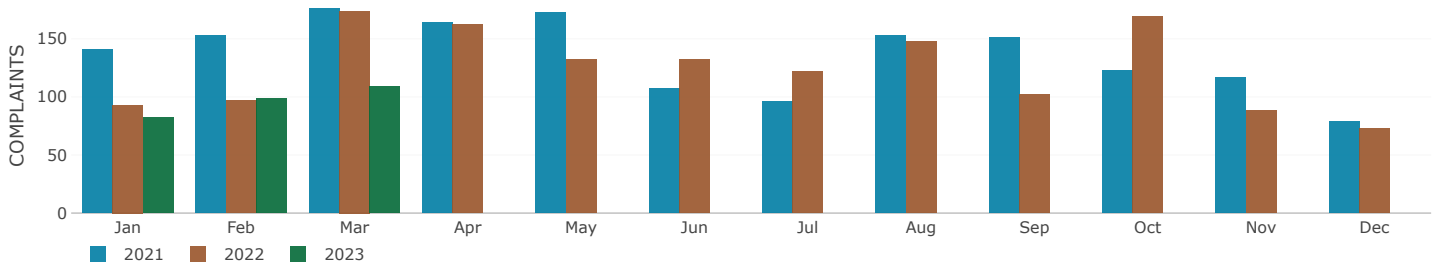
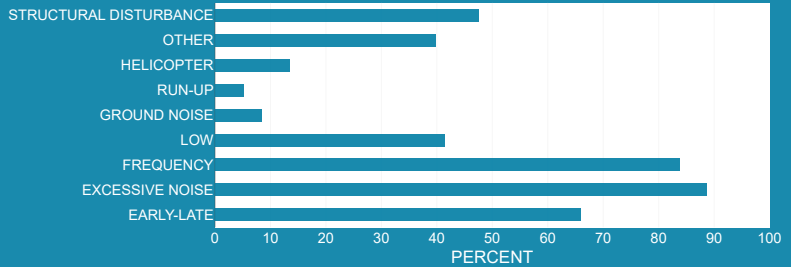


Locations	
<span style="display:inline-block; width:15px; height:15px; background-color:yellow; border:1px solid black;"></span>	1-3
<span style="display:inline-block; width:15px; height:15px; background-color:orange; border:1px solid black;"></span>	4-5
<span style="display:inline-block; width:15px; height:15px; background-color:darkorange; border:1px solid black;"></span>	6-10
<span style="display:inline-block; width:15px; height:15px; background-color:darkred; border:1px solid black;"></span>	11+

## COMPLAINTS

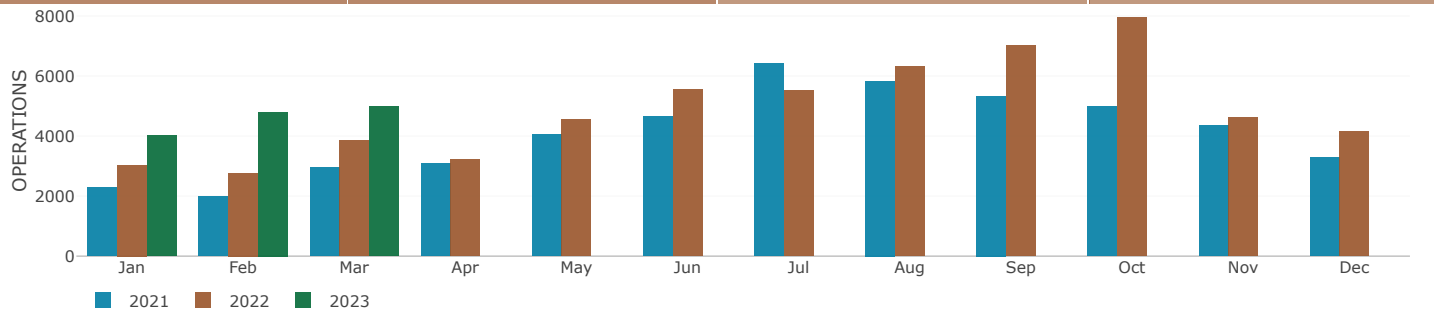
<b>2023</b>	<b>290</b> COMPLAINTS	<b>8</b> LOCATIONS	<b>123</b> NIGHTTIME COMPLAINTS	<b>6</b> NIGHTTIME HOUSEHOLDS
<b>2022</b>	<b>364</b> COMPLAINTS	<b>16</b> LOCATIONS	<b>118</b> NIGHTTIME COMPLAINTS	<b>7</b> NIGHTTIME HOUSEHOLDS

### COMPLAINT DESCRIPTORS



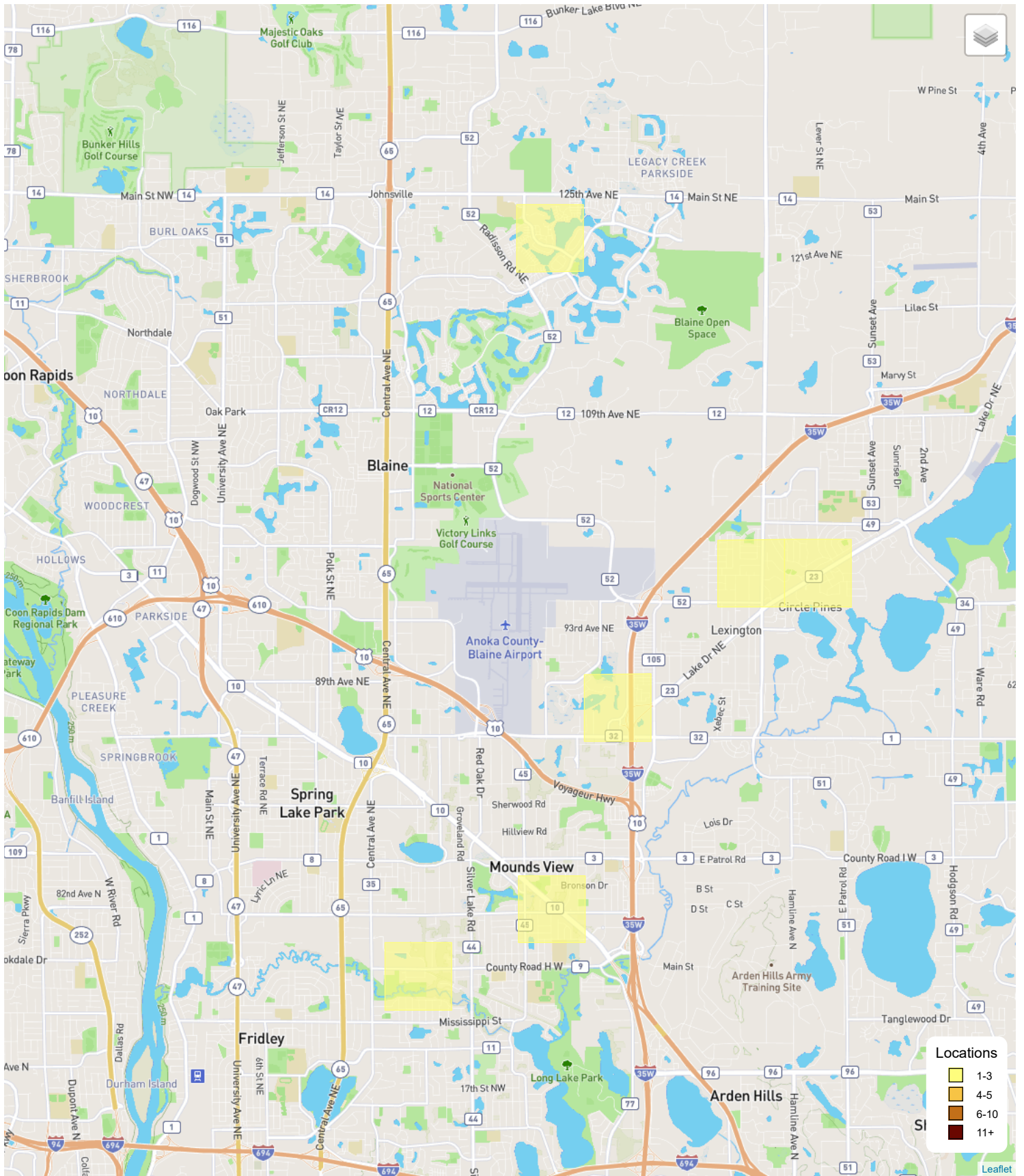
## OPERATIONS

<b>2023</b>		<b>2022</b>	
<b>13,806</b> OPERATIONS	<b>698</b> NIGHTTIME OPERATIONS	<b>9,643</b> OPERATIONS	<b>557</b> NIGHTTIME OPERATIONS



AIRCRAFT TYPE	OPERATIONS	%	COMPLAINTS	%
JET	441	3.2 %	33	11.4 %
HELICOPTER	403	2.9 %	33	11.4 %
NOT-CORRELATED	0	0.0 %	1	0.3 %
PISTON	11,983	86.8 %	137	47.2 %
TURBO-PROP	870	6.3 %	84	29.0 %
UNKNOWN	109	0.8 %	2	0.7 %
RUN-UP	0	0.0 %	0	0.0 %

# Anoka County-Blaine (Janes Field) Airport (ANE) - COMPLAINTS HEATMAP

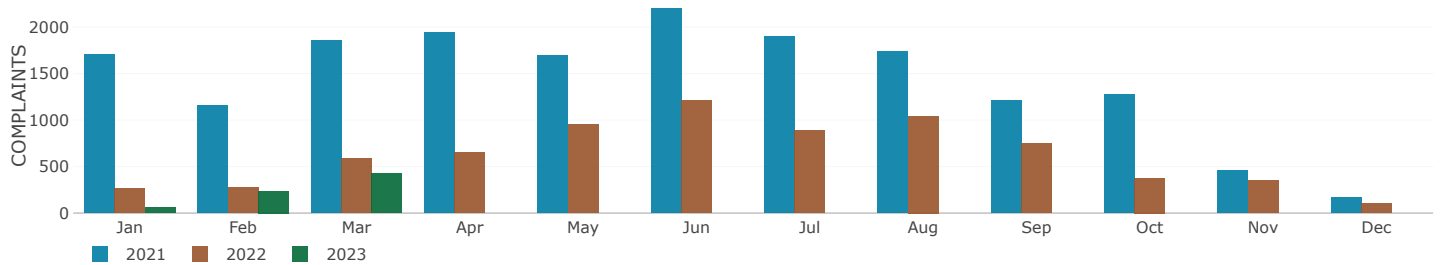
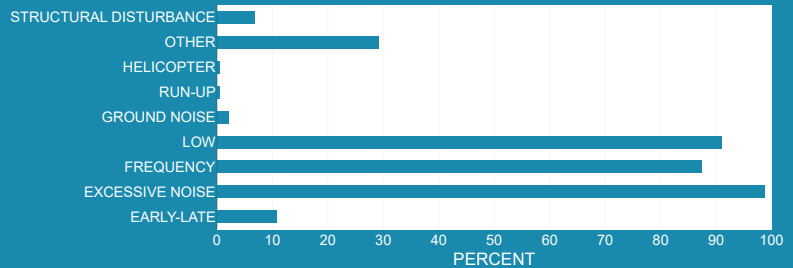




## COMPLAINTS

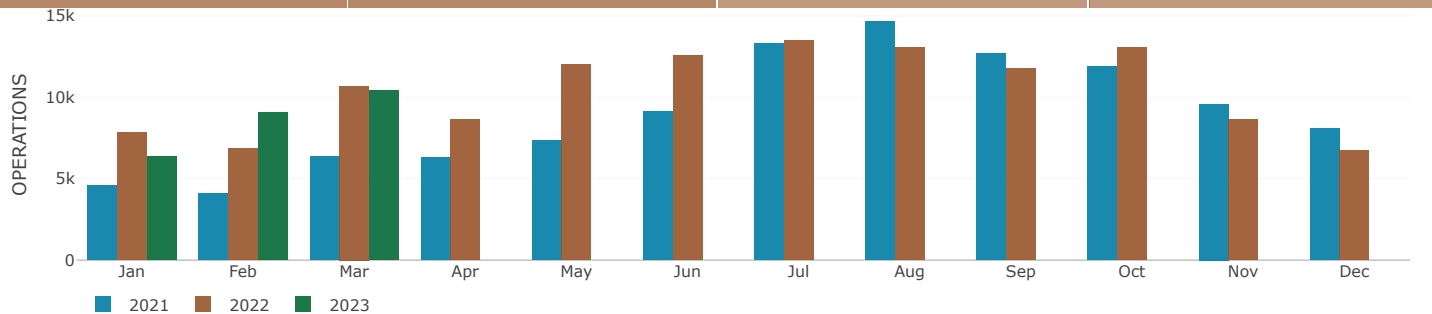
<b>2023</b>	<b>726</b> COMPLAINTS	<b>22</b> LOCATIONS	<b>59</b> NIGHTTIME COMPLAINTS	<b>14</b> NIGHTTIME HOUSEHOLDS
<b>2022</b>	<b>1,130</b> COMPLAINTS	<b>34</b> LOCATIONS	<b>165</b> NIGHTTIME COMPLAINTS	<b>24</b> NIGHTTIME HOUSEHOLDS

### COMPLAINT DESCRIPTORS



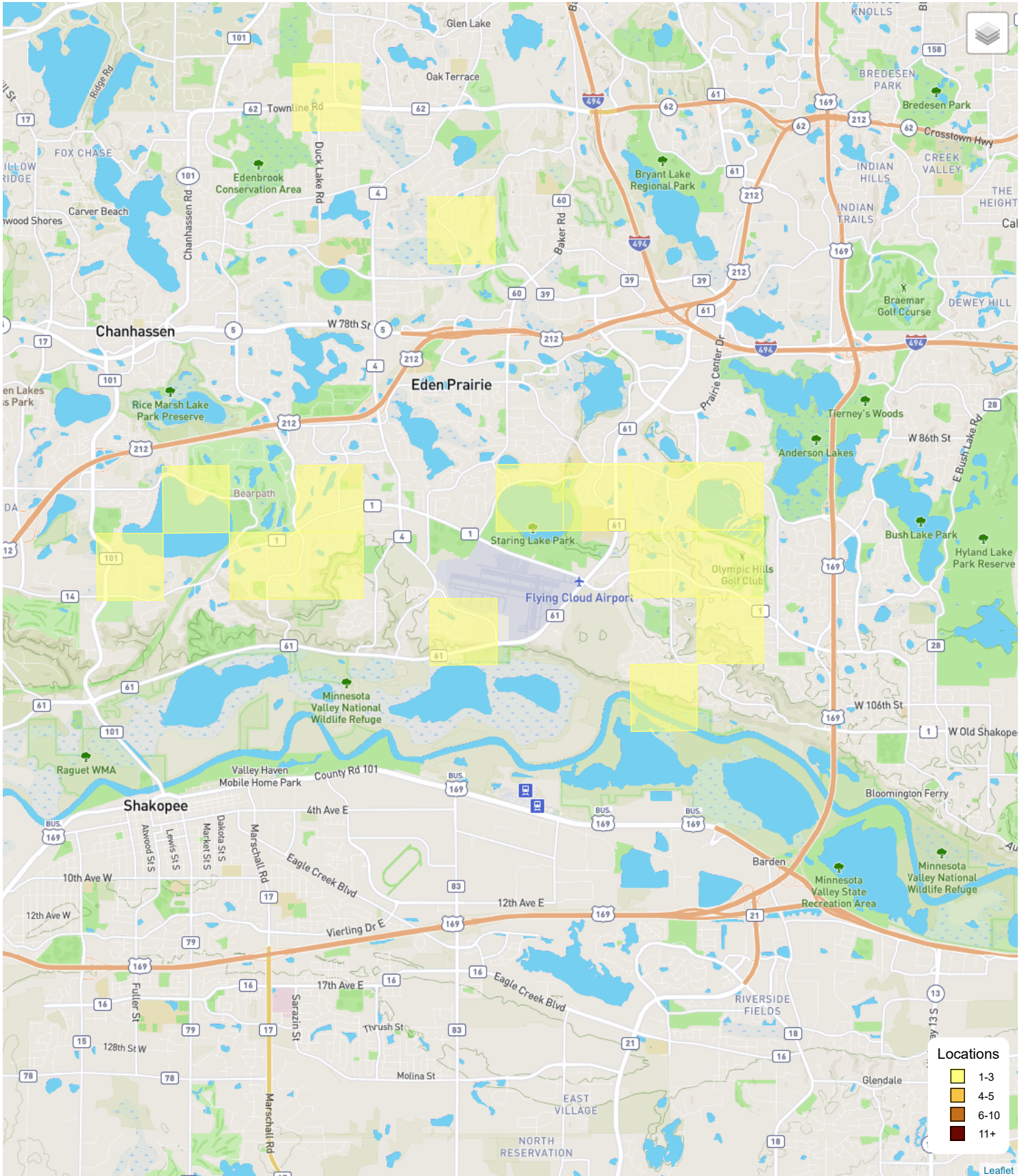
## OPERATIONS

<b>2023</b>		<b>2022</b>	
<b>25,841</b> OPERATIONS	<b>806</b> NIGHTTIME OPERATIONS	<b>25,375</b> OPERATIONS	<b>813</b> NIGHTTIME OPERATIONS



AIRCRAFT TYPE	OPERATIONS	%	COMPLAINTS	%
JET	2,173	8.4 %	55	7.6 %
HELICOPTER	511	2.0 %	3	0.4 %
PISTON	21,384	82.8 %	614	84.6 %
TURBO-PROP	1,663	6.4 %	51	7.0 %
UNKNOWN	110	0.4 %	3	0.4 %
RUN-UP	0	0.0 %	0	0.0 %

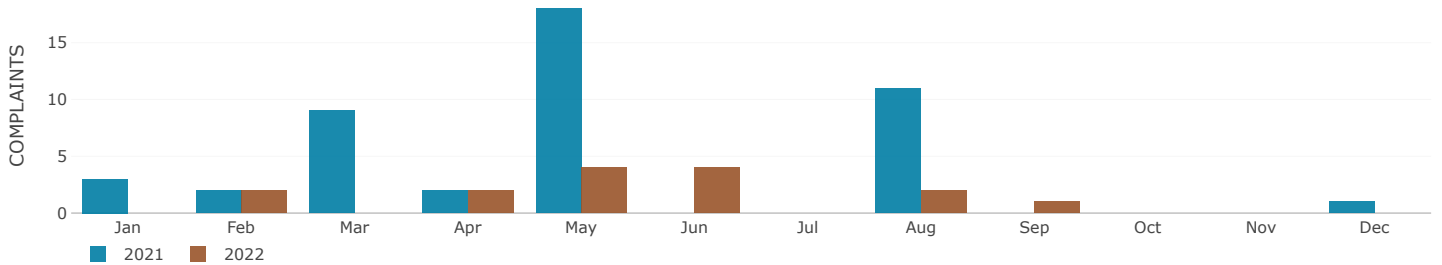
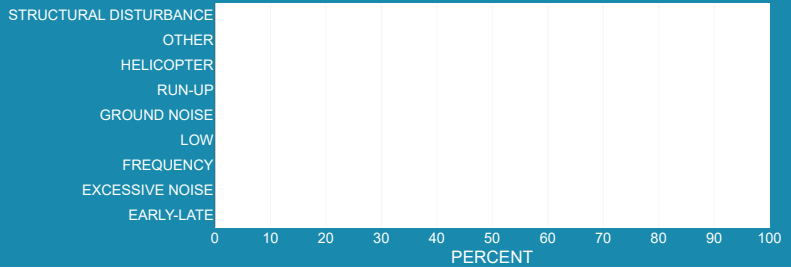
# Flying Cloud Airport (FCM) - COMPLAINTS HEATMAP



COMPLAINTS

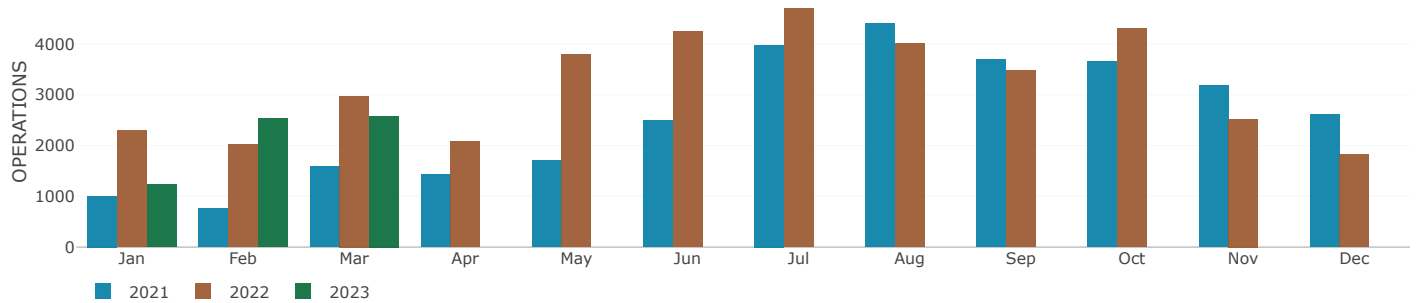
2023	0 COMPLAINTS	0 LOCATIONS	0 NIGHTTIME COMPLAINTS	0 NIGHTTIME HOUSEHOLDS
2022	2 COMPLAINTS	1 LOCATIONS	2 NIGHTTIME COMPLAINTS	1 NIGHTTIME HOUSEHOLDS

COMPLAINT DESCRIPTORS



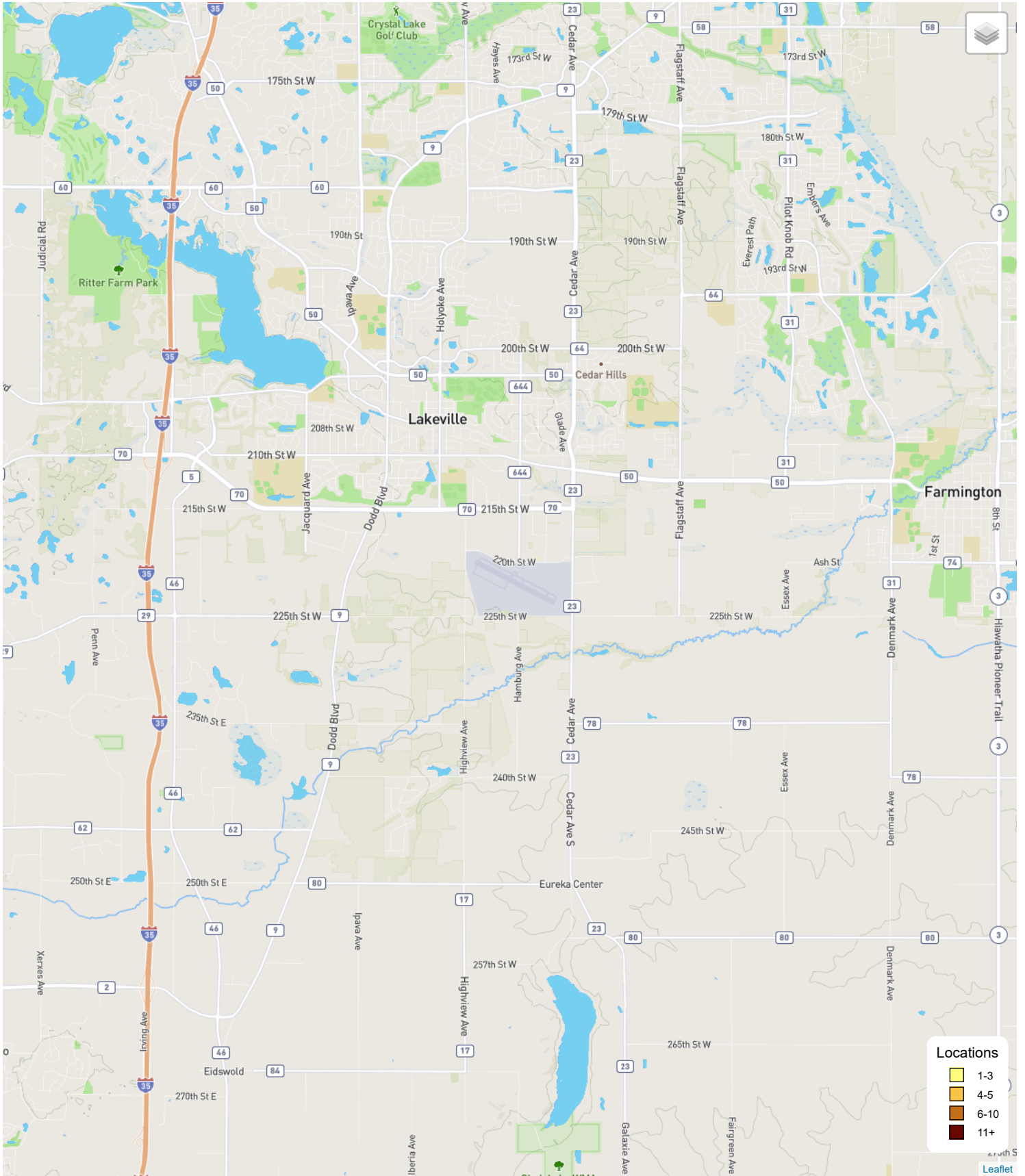
OPERATIONS

2023		2022	
6,358 OPERATIONS	44 NIGHTTIME OPERATIONS	7,289 OPERATIONS	45 NIGHTTIME OPERATIONS



AIRCRAFT TYPE	OPERATIONS	%	COMPLAINTS	%
HELICOPTER	70	1.1 %	0	NaN %
JET	40	0.6 %	0	NaN %
PISTON	6,087	95.7 %	0	NaN %
TURBO-PROP	57	0.9 %	0	NaN %
UNKNOWN	104	1.6 %	0	NaN %
RUN-UP	0	0.0 %	0	NaN %

# Airlake Airport (LVN) - COMPLAINTS HEATMAP

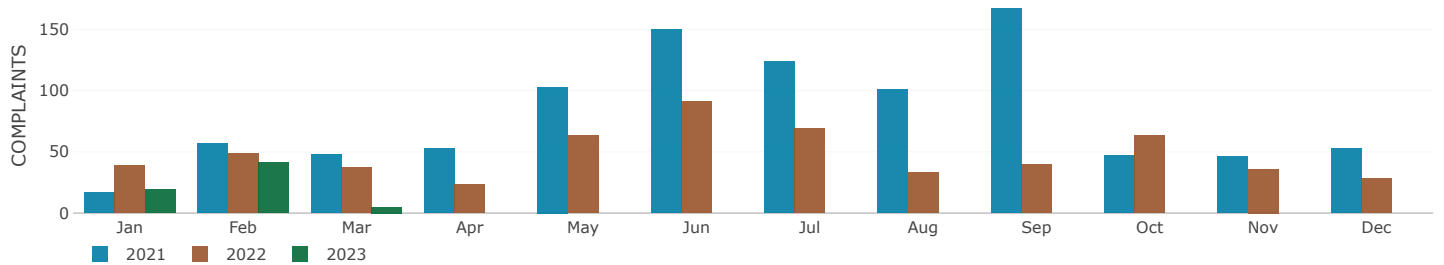
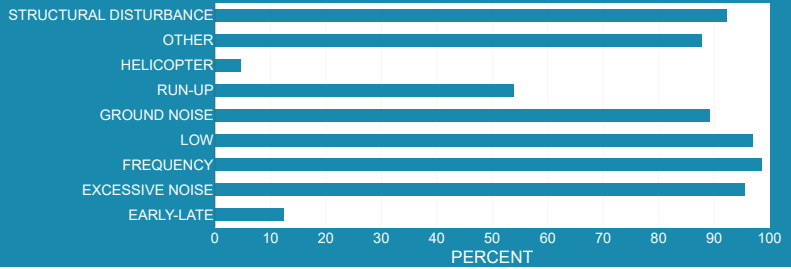




COMPLAINTS

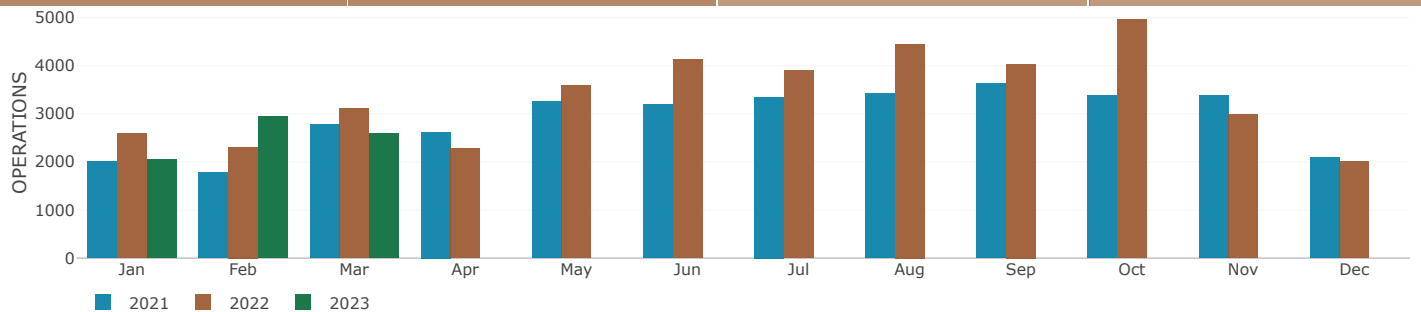
2023	65 COMPLAINTS	7 LOCATIONS	4 NIGHTTIME COMPLAINTS	4 NIGHTTIME HOUSEHOLDS
2022	125 COMPLAINTS	8 LOCATIONS	9 NIGHTTIME COMPLAINTS	3 NIGHTTIME HOUSEHOLDS

COMPLAINT DESCRIPTORS



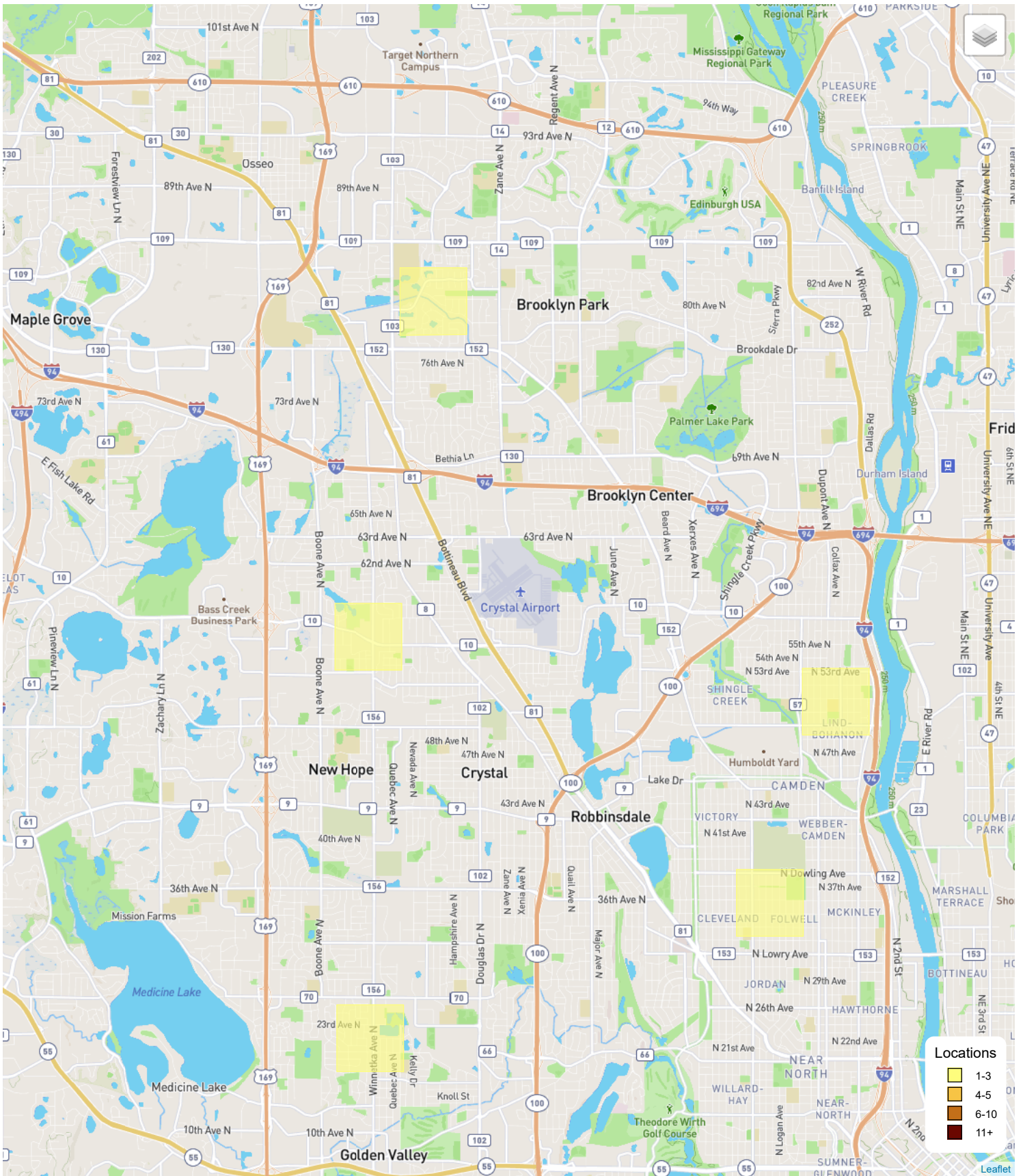
OPERATIONS

2023		2022	
7,594 OPERATIONS	71 NIGHTTIME OPERATIONS	8,007 OPERATIONS	59 NIGHTTIME OPERATIONS



AIRCRAFT TYPE	OPERATIONS	%	COMPLAINTS	%
JET	0	0.0 %	4	6.2 %
HELICOPTER	126	1.7 %	5	7.7 %
PISTON	7,360	96.9 %	49	75.4 %
TURBO-PROP	20	0.3 %	6	9.2 %
UNKNOWN	88	1.2 %	1	1.5 %
RUN-UP	0	0.0 %	0	0.0 %

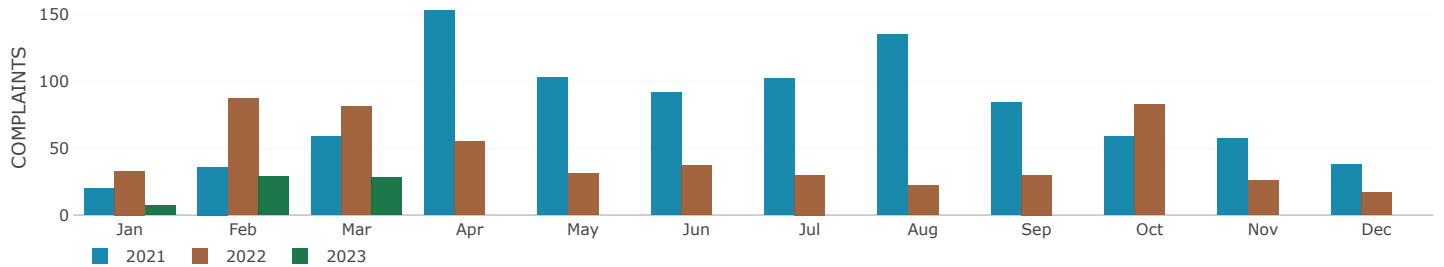
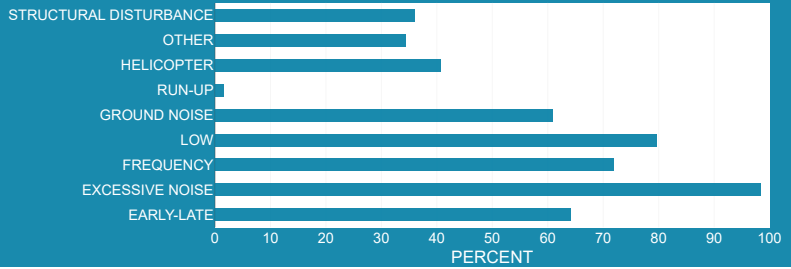
# Crystal Airport (MIC) - COMPLAINTS HEATMAP



COMPLAINTS

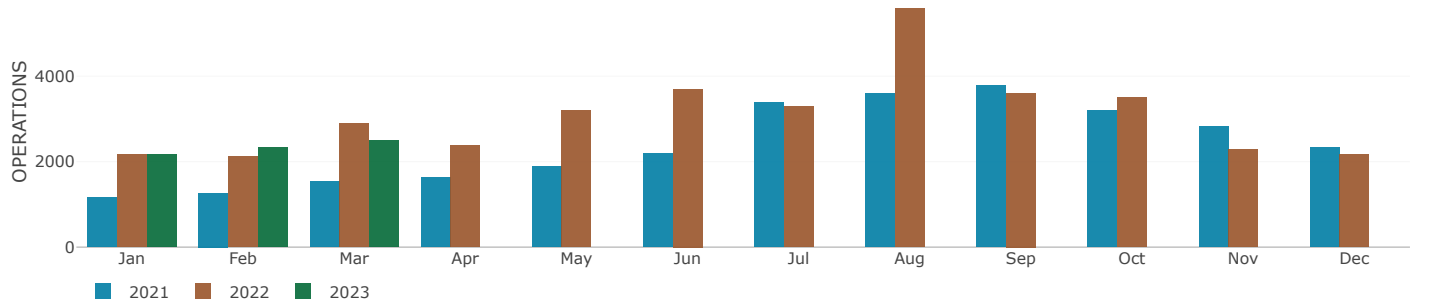
<b>2023</b>	<b>64</b> COMPLAINTS	<b>10</b> LOCATIONS	<b>27</b> NIGHTTIME COMPLAINTS	<b>6</b> NIGHTTIME HOUSEHOLDS
<b>2022</b>	<b>201</b> COMPLAINTS	<b>14</b> LOCATIONS	<b>102</b> NIGHTTIME COMPLAINTS	<b>8</b> NIGHTTIME HOUSEHOLDS

COMPLAINT DESCRIPTORS



OPERATIONS

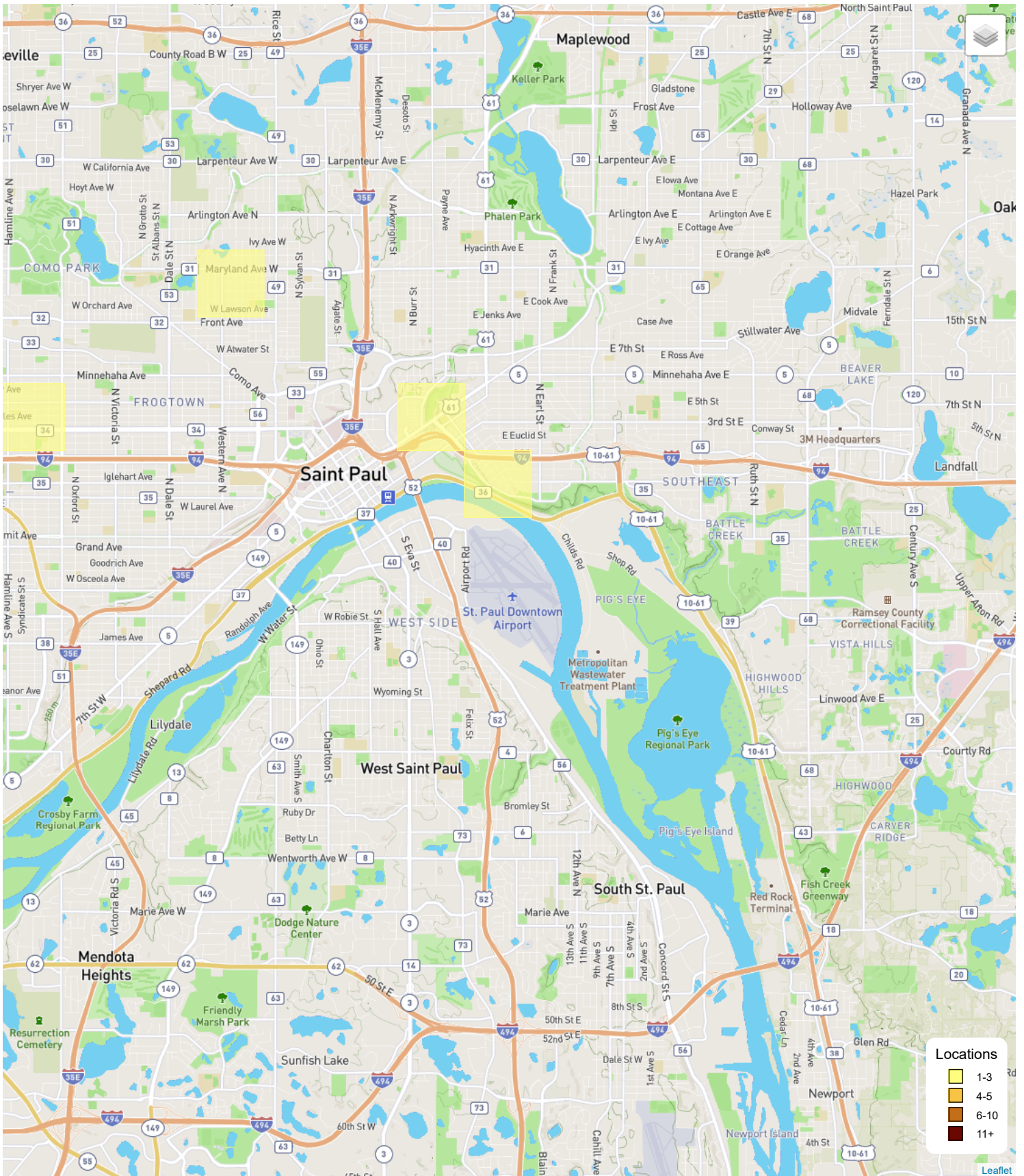
<b>2023</b>		<b>2022</b>	
<b>6,995</b> OPERATIONS	<b>553</b> NIGHTTIME OPERATIONS	<b>7,177</b> OPERATIONS	<b>491</b> NIGHTTIME OPERATIONS



AIRCRAFT TYPE	OPERATIONS	%	COMPLAINTS	%
JET	2,520	36.0 %	23	35.9 %
HELICOPTER	464	6.6 %	16	25.0 %
PISTON	2,411	34.5 %	7	10.9 %
TURBO-PROP	1,292	18.5 %	16	25.0 %
UNKNOWN	308	4.4 %	2	3.1 %
RUN-UP	0	0.0 %	0	0.0 %



# St Paul Downtown Holman Field (STP) - COMPLAINTS HEATMAP



NOTE: Beginning on July 1, 2021, the MACNOMS methodology for counting operations was updated to more accurately reflect total aircraft departures or arrivals at MAC airports.