

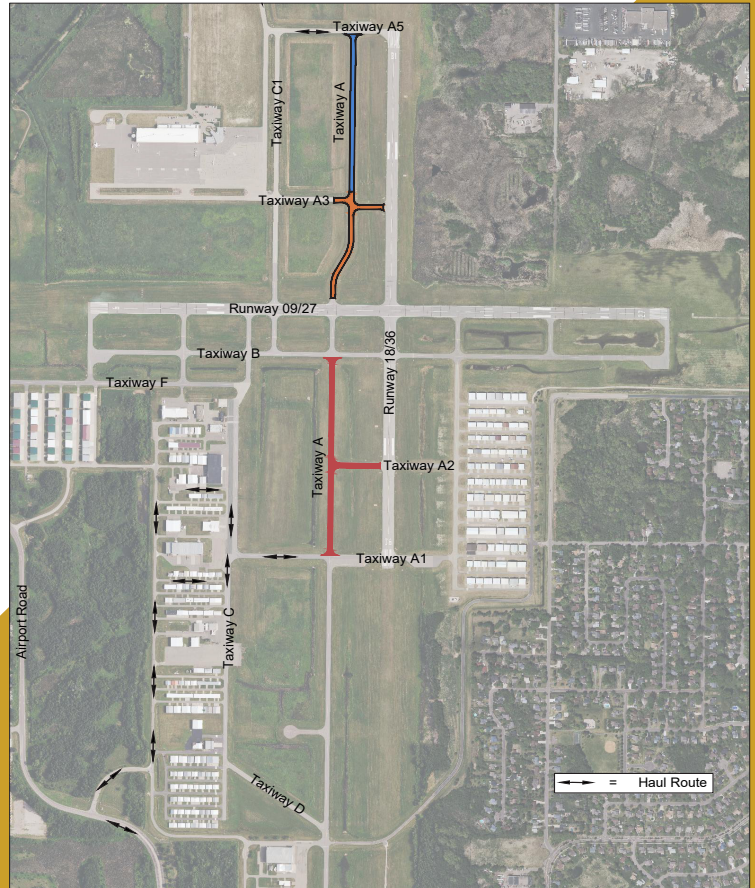
# Construction Notice

ANOKA COUNTY-BLAINE AIRPORT (JANE'S FIELD)

2023 PAVEMENT REHABILITATION - TAXIWAY A AND EDGE LIGHTS PROJECT

## Project Background

The Anoka County-Blaine Airport will be completing a pavement rehabilitation project on Taxiway Alpha this summer. The project area includes Taxiway Alpha from Taxiway Alpha 1 to Taxiway Bravo, and Taxiway Alpha from Runway 09/27 to Taxiway Alpha 5. The project will include reclamation of the existing bituminous pavement, grading, placement of new bituminous pavement, pavement markings, and new LED edge lighting. The portion of Taxiway Alpha from Taxiway Alpha 1 to Taxiway Bravo will also be widened from 30 feet to 40 feet.



### Schedule

September 5 - November 20, 2023.

Contractor:

Northwest Asphalt, Inc.



### Construction Impact

#### ■ Phase 1: September 5 - September 18

Taxiway A from Taxiway A3 to Taxiway A5, CLOSED

#### ■ Phase 2: September 19 - October 2

Taxiway A from Runway 09/27 to Taxiway A5, CLOSED

Taxiway A3 from Taxiway C1 to Runway 18/36, CLOSED

\*A two day closure of Runway 09/27 will occur during Phase, date TBD.

#### ■ Phase 3: October 3 - October 23

Taxiway A from Taxiway A1 to Taxiway B, CLOSED

Taxiway A2 from Taxiway A to Runway 18/36, CLOSED

#### □ Phase 4 (Tentative): October 24 - November 20

Taxiway A from Runway 09/27 to Taxiway A5, CLOSED

Taxiway A3 from Taxiway C1 to Runway 18/36, CLOSED

\*A one day closure of Runway 09/27 will occur during Phase, date TBD.



### Contact

SEH (Engineer):  
Tim Wegwerth, PE  
612.390.0629

Airport Manager:  
Philip Tiedeman  
763.717.0001



*Note: The construction is weather dependent and the dates listed are subject to change if inclement weather conditions occur.*