



Lake Elmo Airport

CONSTRUCTION NEWS



Learn More:

Project newsletters including construction updates and photos will be posted regularly during construction on the airport website.

metroairports.org/general-aviation/airports/lake-elmo/lake-elmo-airport-construction

Long Term Comprehensive Plan (LTCP):

metroairports.org/general-aviation/airports/lake-elmo-airport

Environmental Assessment/Environmental Assessment Worksheet (EA/EAW):

metroairports.org/general-aviation/airports/lake-elmo/lake-elmo-environmental-assessment/documents-and-links

If you have questions about the project, please contact us via email at ContactLakeElmoAirportEA@mspmac.org

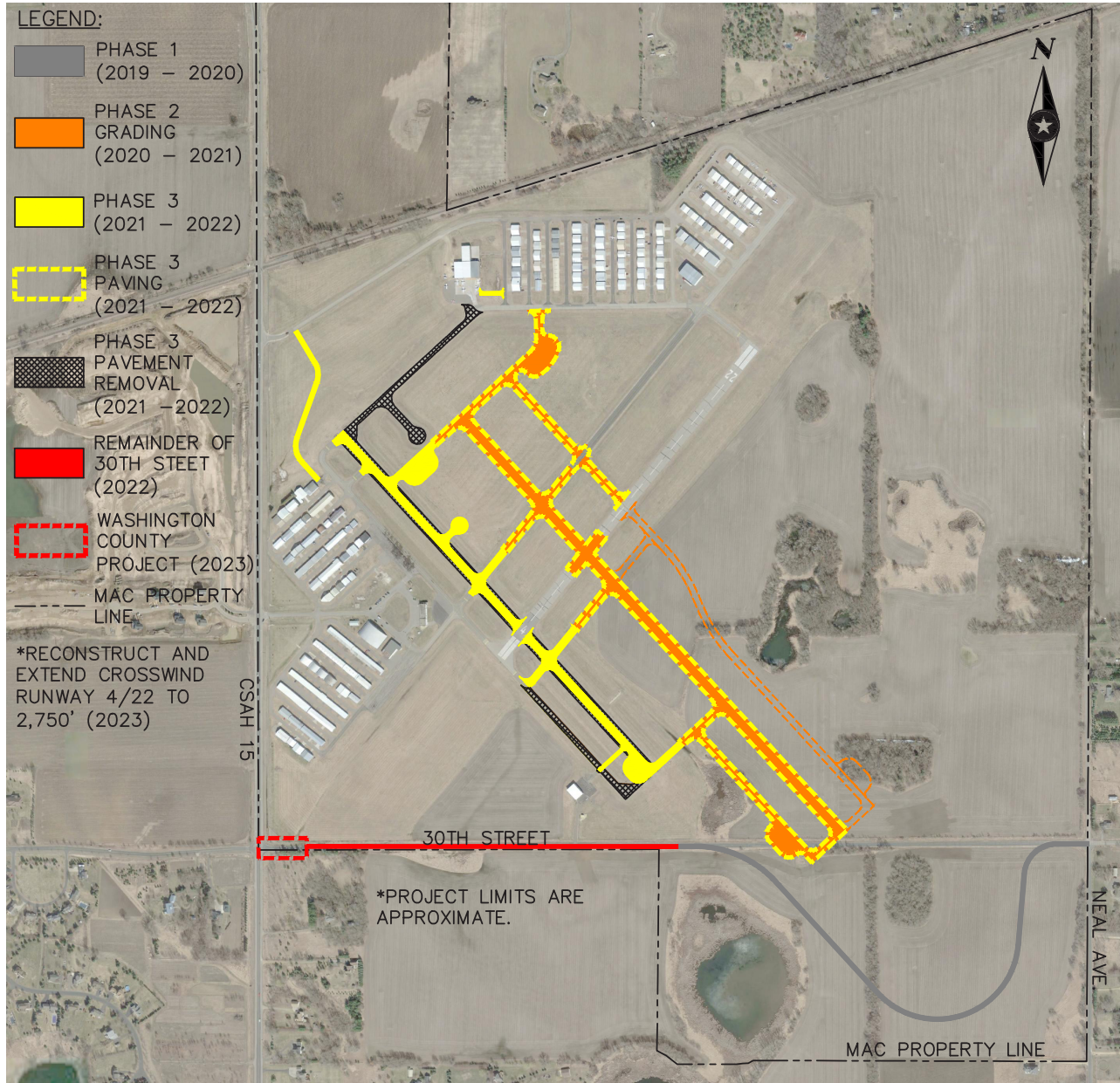
PROJECT UPDATE:

At the end of February, after the site was stabilized, project work was paused for winter conditions and forthcoming road restrictions. Throughout the break in construction, periodic inspections were conducted by the construction staff, project owner, and Valley Branch Watershed inspector. Adjustments were made to erosion control items as needed during this period.

Road restrictions were removed on April 13, 2020 and construction has since started again.

The construction activities this spring will include completion of grading and testing the granular material on the roadway, installation and testing of aggregate base material, and base course paving on the new 30th Street alignment. Meanwhile, topsoil grading and site stabilization will continue.

A two week road closure of 30th Street N, between Manning Ave and Neal Ave, will be scheduled during the summer of 2020. A detour route and signage will be in place during that time. Exact dates are to be determined, and notice will be posted prior to the start of the detour.



PROJECT SCHEDULE

phase
1

Realign 30th Street N
November 2019 through July 2020

A two week road closure of 30th Street N between Manning Ave and Neal Ave will be scheduled during summer 2020. A detour route and signage will be in place during that time. Exact dates are to be determined.

phase
2

Runway 14/32 Replacement & Airfield Modifications
Fall 2020 through Summer 2021

Construction grading of new runway and taxiways.

phase
3

Runway 14/32 Replacement
Fall 2021 through Summer 2022

Completion of new Runway 14/32 and taxiways and convert existing runway to parallel taxiway.