



Lake Elmo Airport

CONSTRUCTION NEWS



Learn More:

Project newsletters including construction updates and photos will be posted regularly during construction on the airport website.

metroairports.org/general-aviation/airports/lake-elmo/lake-elmo-airport-construction

Long Term Comprehensive Plan (LTCP):

metroairports.org/general-aviation/airports/lake-elmo-airport

Environmental Assessment/Environmental Assessment Worksheet (EA/EAW):

metroairports.org/general-aviation/airports/lake-elmo/environmental-assessment/documents-and-links

If you have questions about the project, please contact us via email at ContactLakeElmoAirportEA@mspm.org

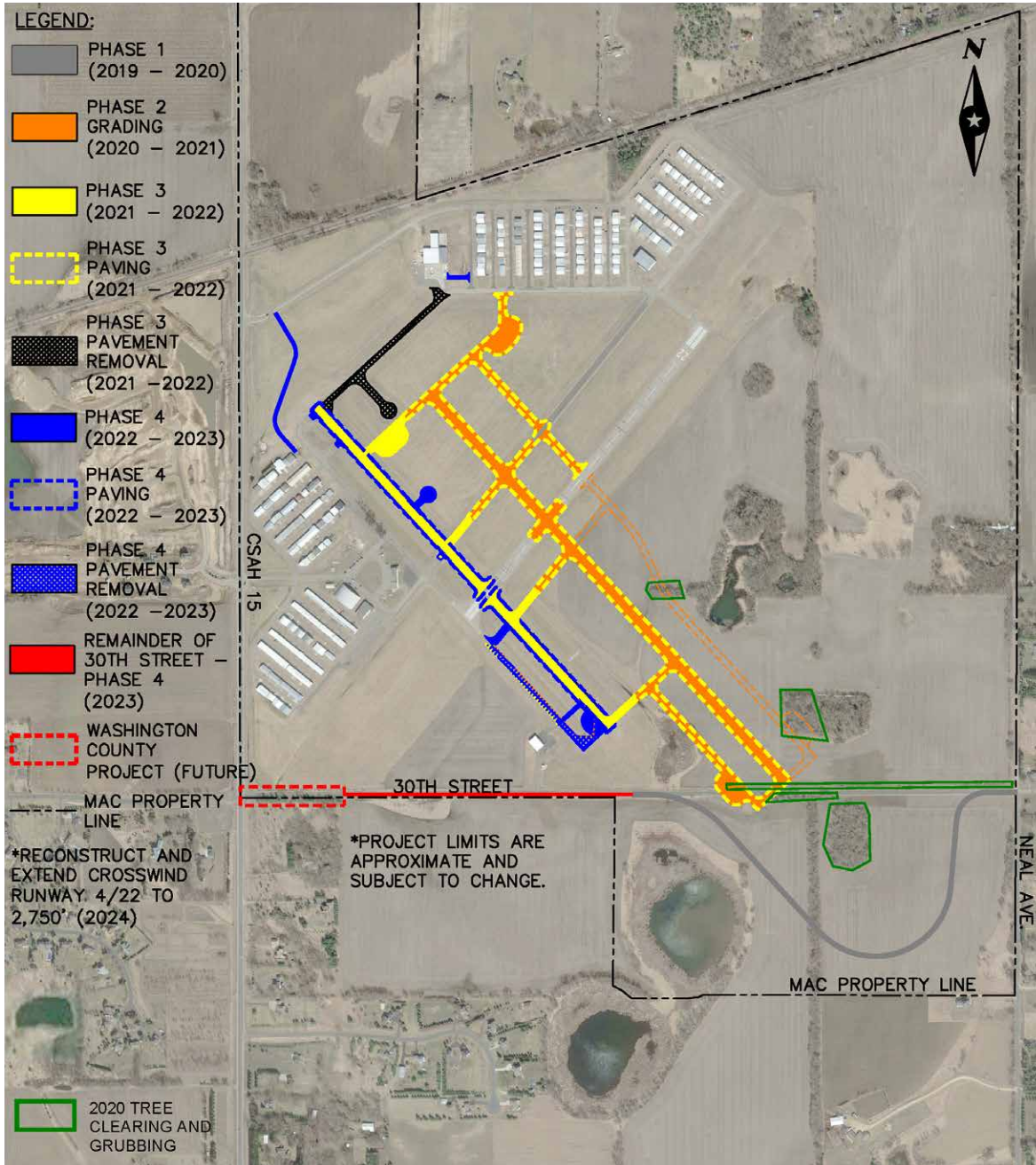
PROJECT UPDATE:

Construction activities for Phase 2 of the runway replacement project in the month of August included, runway grading, seeding, placement of granular borrow, and aggregate base in the runway and taxiway pavement sections.

Earthwork grading operations continued and will continue into the month of September. Topsoil was spread over areas once grade was established to facilitate turf establishment. Import of select granular along with aggregate base was trucked in utilizing the entrance off 30th Street for the southern portion of the project and then the north airport entrance off Manning Avenue for the northern most portion. In the pavement sections, topsoil was stripped and on-site granular borrow material was placed, graded, compacted, and tested for density. High strength geo-textile fabric was then installed above the granular borrow section. Once fabric was in place, the select granular was placed over top, compacted, tested prior to aggregate base placement.

Remaining work items include draitile installation along the edges of the runway, importation of filtration media for Basin 1, aggregate base testing and acceptance, paving the bituminous base lift on all taxiways, and final grading and seeding. Taxiway electrical cans and conduit will also be installed concurrent with this work. Phase 2 is anticipated to be substantially complete mid to late September.

Phase 3 construction will follow after the completion of Phase 2. Work items related to grading and paving are expected to begin in the Spring of 2022. A new airfield electrical vault building will be constructed with Phase 3 and that work is anticipated to start later this fall.



PROJECT SCHEDULE

phase 1

Realign 30th Street N
Substantially complete.
 Punchlist items and project close-out in process.

phase 2

Runway 14/32 Replacement & Airfield Modifications
Fall 2020 through Summer 2021
 Construction grading of new runways and taxiways.

phase 3

Runway 14/32 Replacement
Fall 2021 through Summer 2022
 Completion of new Runway 14/32 and new taxiways.

phase 4

Runway 14/32 Replacement
Fall 2022 through Summer 2023
 Completion of taxiway modifications, conversion of existing runway to parallel taxiway, and service roads.