

NOTICE OF PUBLIC COMMENT PERIOD AND PUBLIC HEARING FOR DRAFT FLYING CLOUD AIRPORT (FCM) ZONING ORDINANCE

The Joint Airport Zoning Board (JAZB) for Flying Cloud Airport (FCM) is developing an *Airport Zoning Ordinance* for land uses around FCM. This is a continuation of the airport zoning effort started in 2009-2010 but not finalized. Similar to the previous zoning proposal, the *Draft FCM Zoning Ordinance (Zoning Ordinance)* limits the height of structures and vegetation and prohibits certain land uses in an area extending approximately 2 miles from the outer boundaries of FCM. The zoning is being conducted as required by Minnesota Statutes 360.061 – 360.074 and Minnesota Rules 8800.1200 and 8800.2400. Maps that are part of the proposed *Zoning Ordinance* show the precise boundaries for application of the *Zoning Ordinance* and the associated proposed restrictions. A summary map showing the proposed Safety Zones is shown on the reverse side of this notice.

The proposed *Zoning Ordinance* would:

- Limit the height of structures and vegetation out to approximately 2 miles to the west of FCM, and out to approximately 1.5 miles in all other areas around the airport. In most cases, however, the airport zoning height limitations would be less restrictive than maximum heights allowed in the municipal zoning code.
- Prohibit the development of structures in Safety Zone A, which is mostly contained to airport-owned property;
- Prohibit, in Safety Zone B, the construction of amphitheaters, hospitals, nursing homes, residential uses, schools, stadiums and ponds or other features which might attract waterfowl or other birds, with the exception that the proposed restrictions in Safety Zone B do not affect additions to existing residences, residential redevelopment or future residential development in certain Permitted Residential Areas;
- Require a contiguous open space within Safety Zone B of either 20% of the total Safety Zone B acreage or 20 acres, whichever is larger; and
- Prohibit, in Safety Zones A, B and C, the use of land that creates or causes interference with the operations of radio or electronic facilities on FCM or with radio or electronic communications between FCM and aircraft, makes it difficult for pilots to distinguish between Airport lights and other lights, results in glare in the eyes of pilots using FCM, impairs visibility in the vicinity of FCM, or otherwise endangers the landing, taking off, or maneuvering of aircraft in the runway approach areas.

THE PUBLIC COMMENT PERIOD ON THE PROPOSED ZONING ORDINANCE WILL COMMENCE AT 8:00 A.M. ON MONDAY, FEBRUARY 12, 2018, AND CLOSE AT 5:00 P.M. ON WEDNESDAY, MARCH 14, 2018. During this period, written comments will be accepted and must be addressed to:

Secretary to the FCM Joint Airport Zoning Board
Metropolitan Airports Commission
6040 28th Avenue South
Minneapolis, MN 55450

Comments can also be emailed to fcm.zoning@mspm.com

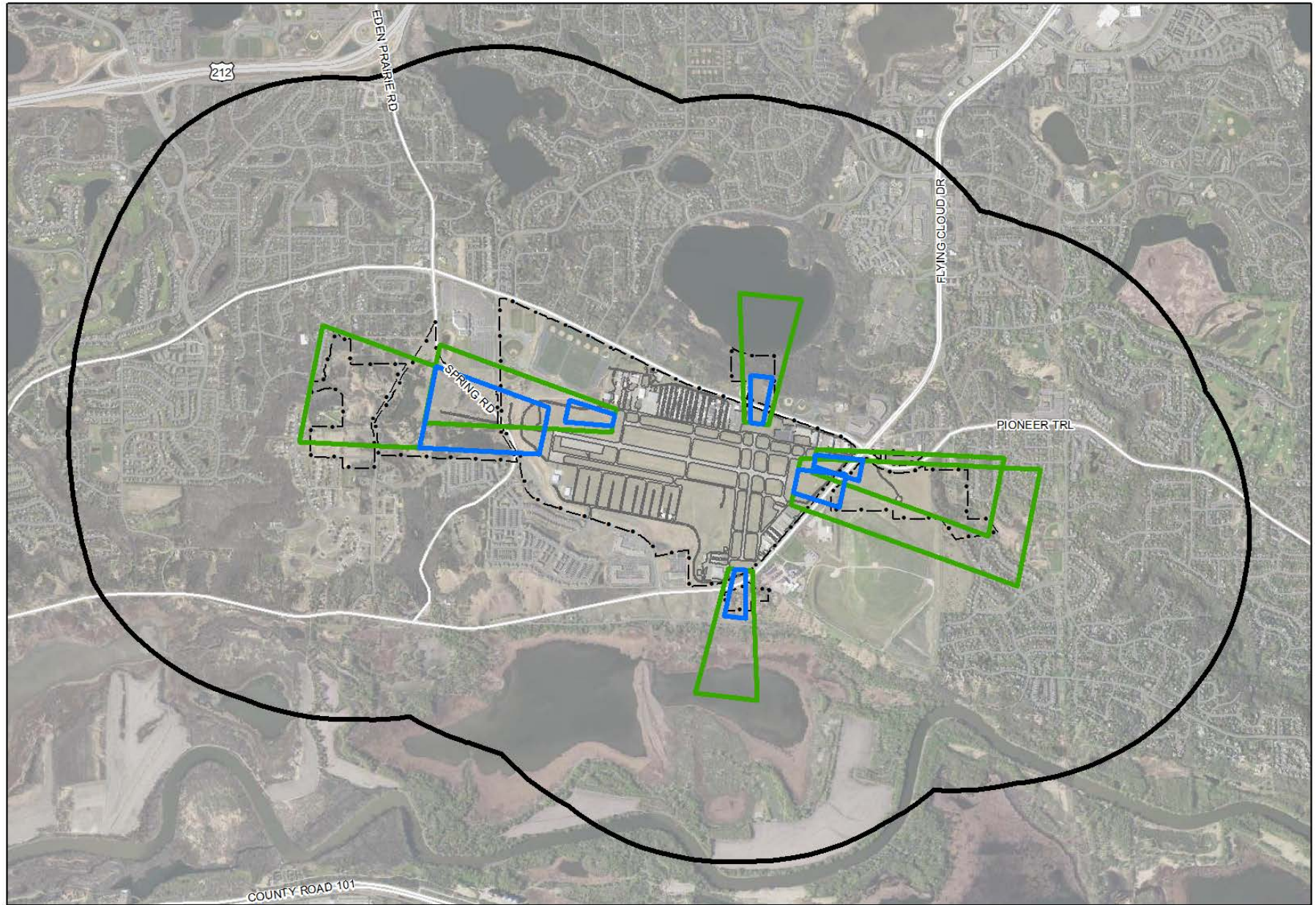
A PUBLIC HEARING ON THE PROPOSED ZONING ORDINANCE IS SCHEDULED FOR TUESDAY, FEBRUARY 27, 2018, AT THE EDEN PRAIRIE CITY HALL COUNCIL CHAMBERS, 8080 MITCHELL ROAD, EDEN PRAIRIE, MN. THE PUBLIC HEARING WILL BEGIN AT 6:30 P.M. AND LAST UNTIL ALL PERSONS WISHING TO ADDRESS THE BOARD HAVE BEEN HEARD. AN OPEN HOUSE WILL BE HELD PRIOR TO THE PUBLIC HEARING STARTING AT 5:00 P.M. FOLLOWED BY A PUBLIC PRESENTATION FROM 6:00 P.M. TO 6:30 P.M.

Copies of the proposed *Zoning Ordinance* will be available for review beginning on Monday, February 12, 2018, at the following locations: the Metropolitan Airports Commission's Main Office, 6040 28th Avenue South, Minneapolis; the City Halls of the cities of Eden Prairie, Shakopee, and Chanhassen; and the Eden Prairie Library, 565 Prairie Center Drive, Eden Prairie. The proposed Zoning Ordinance will also be available for review beginning February 12, 2018 on the MAC website at:

<https://metroairports.org/General-Aviation/Airports/Flying-Cloud/Joint-Airport-Zoning-Board-Flying-Cloud.aspx>

For further information about the public comment period, the open house or the public hearing, please call Shelly Cambridge, Secretary to the FCM Joint Airport Zoning Board, at (612) 726-8144.

DRAFT FLYING CLOUD AIRPORT ZONING ORDINANCE – PROPOSED SAFETY ZONES



FCM Property Line JAZB Safety Zone A JAZB Safety Zone B JAZB Safety Zone C

0 2,500 5,000 Feet