



Lake Elmo Airport

CONSTRUCTION NEWS



Learn More:

Project newsletters including construction updates and photos will be posted regularly during construction on the airport website.

metroairports.org/general-aviation/airports/lake-elmo/lake-elmo-airport-construction

Long Term Comprehensive Plan (LTCP):

metroairports.org/general-aviation/airports/lake-elmo-airport

Environmental Assessment/Environmental Assessment Worksheet (EA/EAW):

metroairports.org/general-aviation/airports/lake-elmo/lake-elmo-environmental-assessment/documents-and-links

If you have questions about the project, please contact us via email at ContactLakeElmoAirportEA@mspmac.org

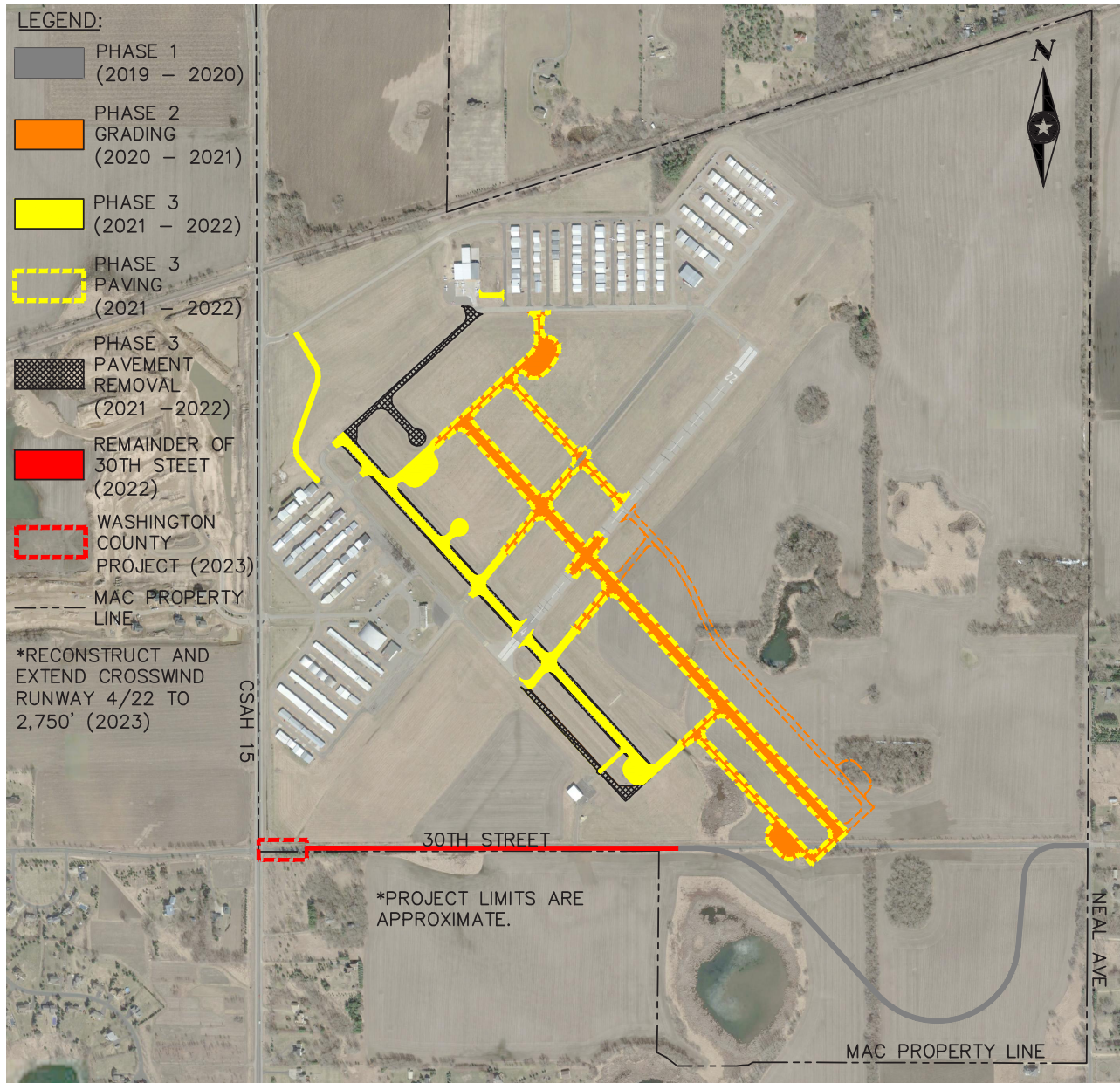
PROJECT UPDATE:

30th Street, between Manning Ave and Neal Ave was closed from July 6th to July 18th while construction crews worked to complete the new 30th Street alignment. A detour route and signage were in place during that time, routing traffic to the North and around on 40th Street.

Once traffic was rerouted, construction activities continued where they left off in May. The existing 30th Street pavement was removed, along with the existing road bed in the sections where the new roadway alignment overlapped the old 30th Street alignment. Granular material was then imported, placed, graded, compacted, and tested for material density requirements. After the granular material was prepared and passed testing, class 5 aggregate base material was hauled in and placed. The class 5 was graded and tested, similar to the granular. Once material testing was complete and passing, the next step was paving the first layer of bituminous pavement. On July 13, 2020, the bituminous base course was paved on the new alignment. The final lift of the pavement was placed on July 15th, followed by signage and pavement marking installation.

Concurrent with the roadway construction, an existing culvert was removed and replaced to facilitate drainage between the north and south side of 30th Street. As those activities were taking place, edge grading and site grading was also being finished. Topsoil was also placed and spread throughout project areas. Upon completion of the grading activities, the site was seeded, fertilized, and stabilized with mulch.

30th Street was reopened to traffic at 1:00 pm on July 18th. Construction activities in the area will decrease in the coming weeks as final touch ups and site cleanup take place.



PROJECT SCHEDULE

phase
1

Realign 30th Street N
November 2019 through July 2020

A two week road closure of 30th Street N between Manning Ave and Neal Ave will be scheduled during summer 2020. A detour route and signage will be in place during that time. Exact dates are to be determined.

phase
2

Runway 14/32 Replacement & Airfield Modifications
Fall 2020 through Summer 2021

Construction grading of new runway and taxiways.

phase
3

Runway 14/32 Replacement
Fall 2021 through Summer 2022

Completion of new Runway 14/32 and taxiways and convert existing runway to parallel taxiway.