



Lake Elmo Airport

CONSTRUCTION NEWS



01-21-2020



02-06-2020



01-30-2020

Learn More:

Project newsletters including construction updates and photos will be posted regularly during construction on the airport website.

metroairports.org/general-aviation/airports/lake-elmo/lake-elmo-airport-construction

Long Term Comprehensive Plan (LTCP):

metroairports.org/general-aviation/airports/lake-elmo-airport

Environmental Assessment/Environmental Assessment Worksheet (EA/EAW):

metroairports.org/general-aviation/airports/lake-elmo/lake-elmo-environmental-assessment/documents-and-links

If you have questions about the project, please contact us via email at ContactLakeElmoAirportEA@mspmac.org

PROJECT UPDATE:

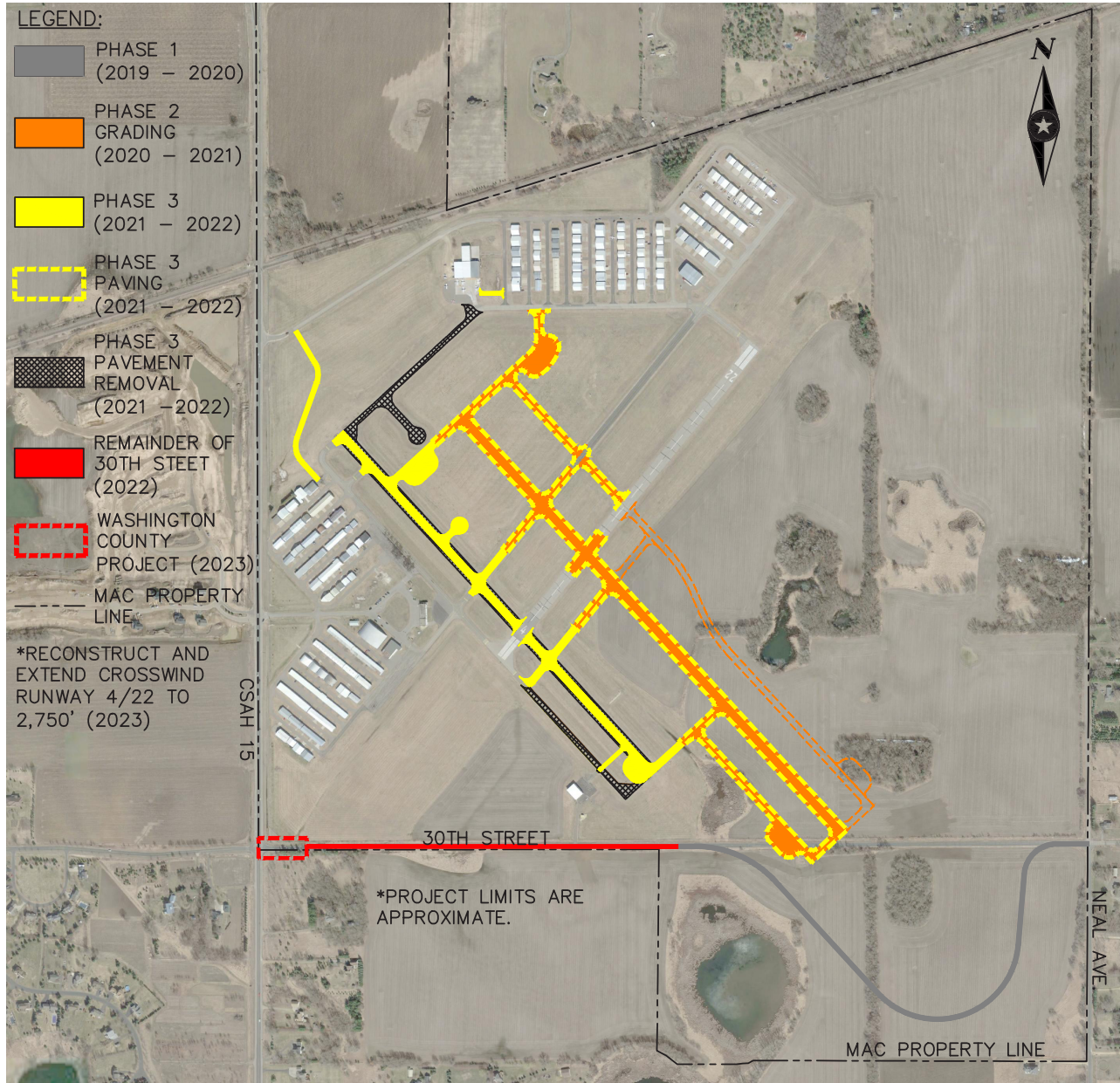
Progress continued on the roadway, stormwater filtration basins, and drainage ditch network throughout the month of February.

Excavation and import of new granular material has now been completed on the new 30th Street alignment. Material testing has been, and will be, required for all new material throughout the construction process. There will be additional excavation and import activities when the new alignment is tied in to the existing alignment, this will take place during a road closure to be scheduled for two weeks in the summer of 2020. More information will be available on the road closure schedule and detour route once the dates have been determined.

Construction of the three stormwater filtration basins have also been completed. The basins were excavated and graded, drintile and filter material was installed, and the areas have been seeded. Final touch up grading and re-seeding will occur as needed prior to final project completion. Overall drainage and flow direction of the site will remain the same. No additional stormwater will be routed to Neal Ave. All stormwater on the site will be collected and routed west to the drainage areas on MAC property to match the pre-existing condition.

The final project item completed, prior to work stopping for the remainder of the winter, was temporary seeding and mulching. This activity will stabilize the site until work starts again later this spring. Construction activities are expected to start again late this spring, when weather allows and road restrictions have been lifted. Updates on construction progress will continue when work resumes later this year.

Periodic inspections by the Valley Branch Watershed and West Lakeland Township engineering representatives have continued throughout construction.



PROJECT SCHEDULE

phase
1

Realign 30th Street N
November 2019 through July 2020

A two week road closure of 30th Street N between Manning Ave and Neal Ave will be scheduled during summer 2020. A detour route and signage will be in place during that time. Exact dates are to be determined.

phase
2

Runway 14/32 Replacement & Airfield Modifications
Fall 2020 through Summer 2021

Construction grading of new runway and taxiways.

phase
3

Runway 14/32 Replacement
Fall 2021 through Summer 2022

Completion of new Runway 14/32 and taxiways and convert existing runway to parallel taxiway.