



# Lake Elmo Airport

## CONSTRUCTION NEWS



### Learn More:

Project newsletters including construction updates and photos will be posted regularly during construction on the airport website.

[metroairports.org/general-aviation/airports/lake-elmo/lake-elmo-airport-construction](https://metroairports.org/general-aviation/airports/lake-elmo/lake-elmo-airport-construction)

### Long Term Comprehensive Plan (LTCP):

[metroairports.org/general-aviation/airports/lake-elmo-airport](https://metroairports.org/general-aviation/airports/lake-elmo-airport)

### Environmental Assessment/Environmental Assessment Worksheet (EA/EAW):

[metroairports.org/general-aviation/airports/lake-elmo/lake-elmo-environmental-assessment/documents-and-links](https://metroairports.org/general-aviation/airports/lake-elmo/lake-elmo-environmental-assessment/documents-and-links)

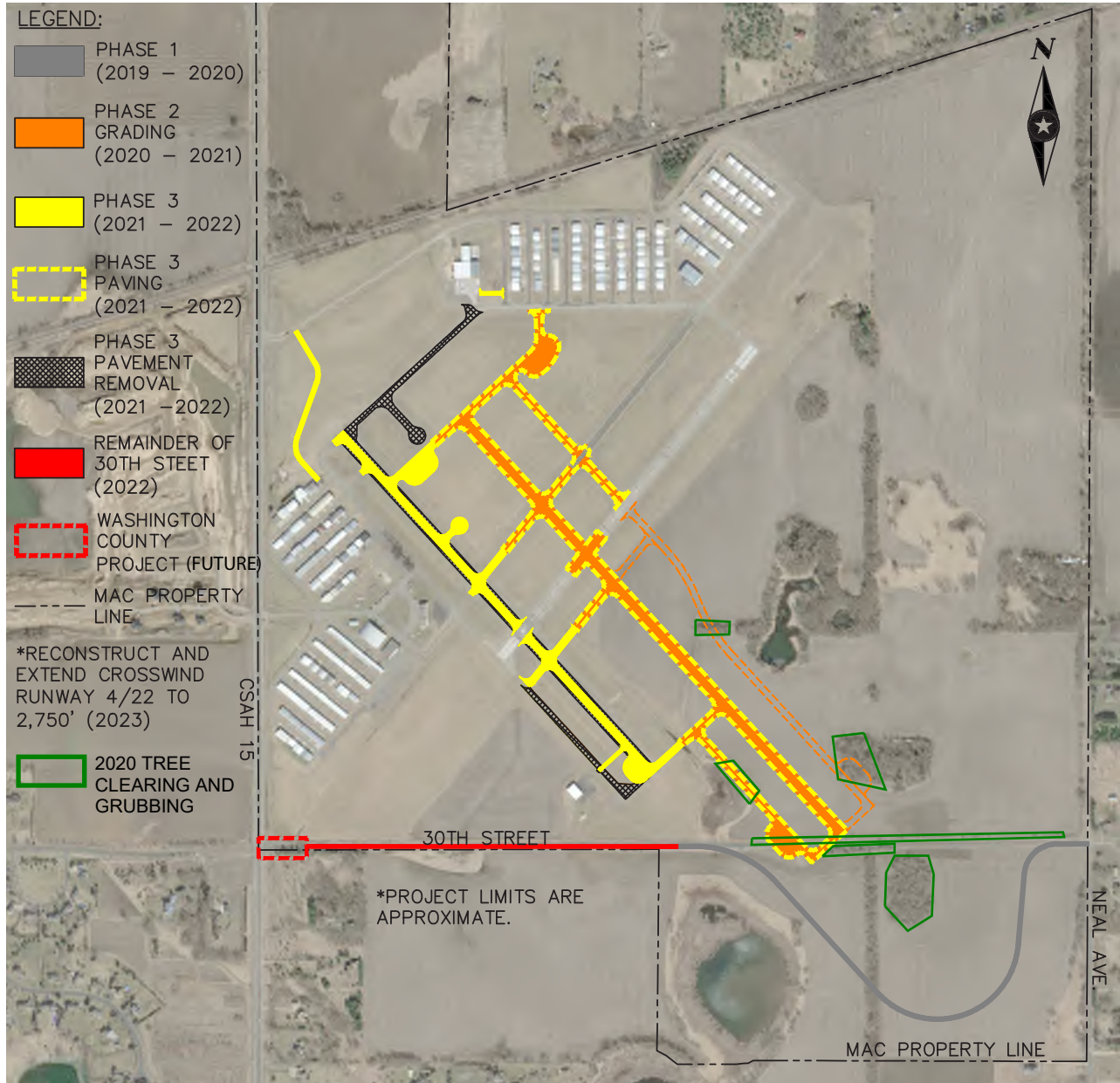
If you have questions about the project, please contact us via email at [ContactLakeElmoAirportEA@mspmac.org](mailto:ContactLakeElmoAirportEA@mspmac.org)

### PROJECT UPDATE:

Phase 1 of the Runway 14/32 Replacement Project, which included the relocation of 30th Street, was substantially completed earlier this summer. Miscellaneous construction has occurred since as final project activities and punchlist items have been determined. Most recently, these activities included planting trees and bushes for screening purposes of nearby residents. The landscaping occurred in multiple areas along the eastern border of the project and included coniferous evergreens and a variety of bushes. Additional construction activities are not planned for phase 1 at this time, however the punchlist items will be addressed as needed throughout the project warranty and close-out period.

Phase 2 of the Runway 14/32 Replacement project is just beginning. This phase of construction includes earthwork grading for the new runway and associated taxiways. Initial construction activities to date have included surveying and installation of silt fence and erosion control measures. Xcel Energy also relocated the gas main along 30th Street, from the old alignment to the south side of the new 30th Street alignment. The next construction activities expected will be the installation of new chain-link airport perimeter fence along the north side of 30th Street, tree removals, and grading.

Phase 2 construction will occur this winter as weather permits. Construction will continue into spring and be completed during the summer of 2021. Phase 3 will include the completion and paving of the new runway and taxiways. This phase will be bid in 2021 and construction will occur from fall of 2021 into summer of 2022.



PROJECT SCHEDULE

*phase*  
**1**

Realign 30th Street N  
**Substantially complete**

Punchlist items and project close-out in process.

*phase*  
**2**

Runway 14/32 Replacement & Airfield Modifications  
**Fall 2020 through Summer 2021**

Construction grading of new runway and taxiways.

*phase*  
**3**

Runway 14/32 Replacement  
**Fall 2021 through Summer 2022**

Completion of new Runway 14/32 and taxiways and convert existing runway to parallel taxiway.