



Lake Elmo Airport

CONSTRUCTION NEWS

Learn More:

Project newsletters including construction updates and photos will be posted regularly during construction on the airport website.

metroairports.org/general-aviation/airports/lake-elmo/lake-elmo-airport-construction

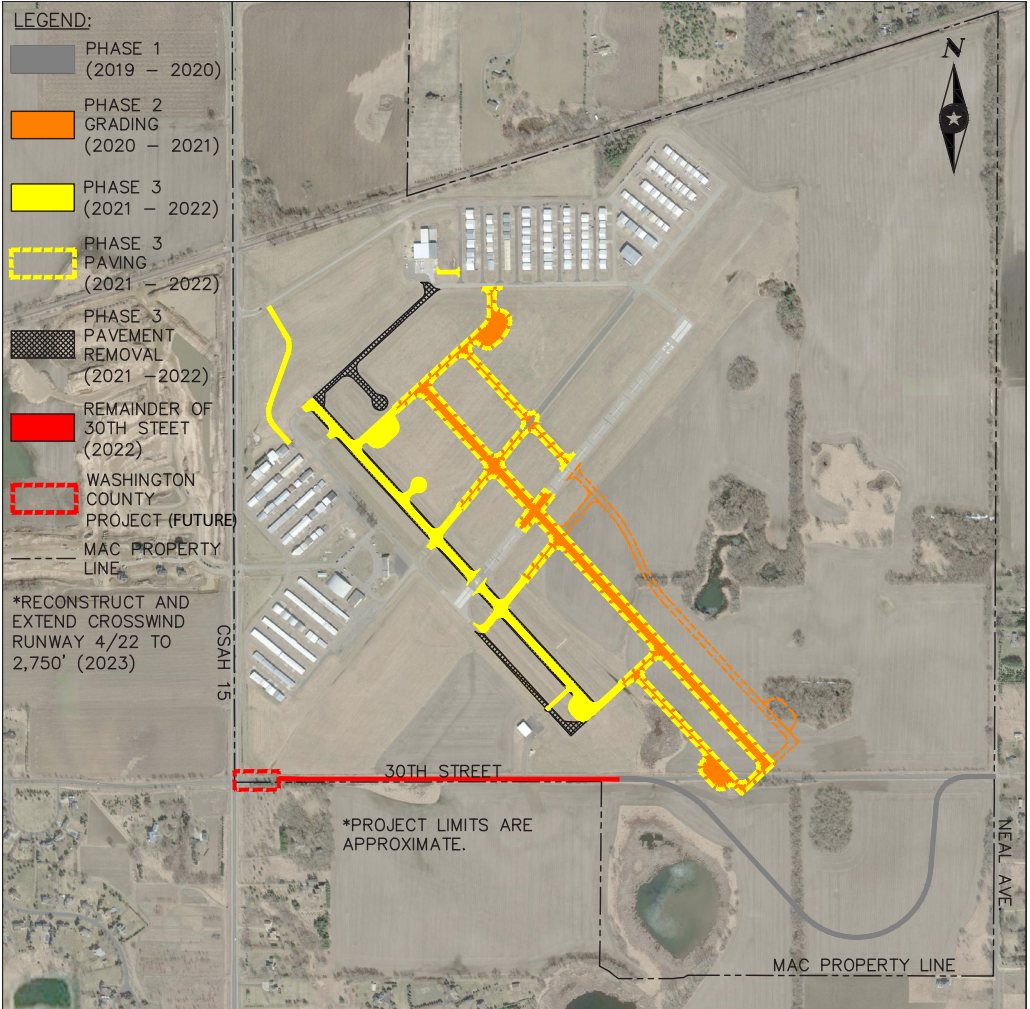
Long Term Comprehensive Plan (LTCP):

metroairports.org/general-aviation/airports/lake-elmo-airport

Environmental Assessment/Environmental Assessment Worksheet (EA/EAW):

metroairports.org/general-aviation/airports/lake-elmo-lake-elmo-environmental-assessment/documents-and-links

If you have questions about the project, please contact us via email at ContactLakeElmoAirportEA@mspmac.org



PROJECT SCHEDULE

phase

1

Realign 30th Street N
Substantially complete

Punchlist items have been on-going, most recently including the installation of ditch checks along the north side of 30th Street and drain tile installation along the east end of the project.

phase

2

Runway 14/32 Replacement & Airfield Modifications
Fall 2020 through Summer 2021

Initial construction meetings have started and construction activities are expected to begin soon. The first items to begin will include installation of erosion control, removal of the existing airport fence and installation of new fence along 30th Street, and tree removal.

phase

3

Runway 14/32 Replacement
Fall 2021 through Summer 2022

Completion of new Runway 14/32 and taxiways and convert existing runway to parallel taxiway.