



# Airlake Airport ADVISORY COMMISSION

---



ALAAC

## Regular Meeting

June 11, 2026





REMINDER:  
Please  
silence your phone  
to avoid interruptions  
and  
mute yourself  
when you are not  
speaking.

# Welcome & Introductions



# ALAAC PURPOSE AND GOALS

## GOAL:

This Commission is formed to further the general welfare of the community and the Airlake Airport, a public airport in the City of Lakeville, County of Dakota, State of Minnesota, through minimizing or resolving problems created by the aircraft operations at the airport.

## PURPOSE:

1. The Commission shall advise the community and the Metropolitan Airports Commission with regard to all matters affecting the Airlake Airport, the classification, rules and regulations supplied to the operation of the Airport and the development of lands adjacent to the Airport.
2. The Commission shall cooperate with the Metropolitan Airports Commission staff in reviewing matters affecting the use and control of the Airlake Airport.
3. The Commission shall make its recommendations to the Metropolitan Airports Commission regarding any proposal affecting the use or operations of Airlake Airport.

# Agenda

Welcome & Introductions

Agenda Discussion

Consent Items

Public Comment

Businesss Items

Information Items

ALAAC Member Announcements

Review Meeting Schedule

Adjourn





## Consent Items:

- Approval of Minutes for 3-12-2026
- Q1 2026 for Aircraft Noise Complaints & Operations



# Public Comment

Members of the public are welcome to share their remarks with the Commission

Please state your name and address

Limit remarks to 3 minutes

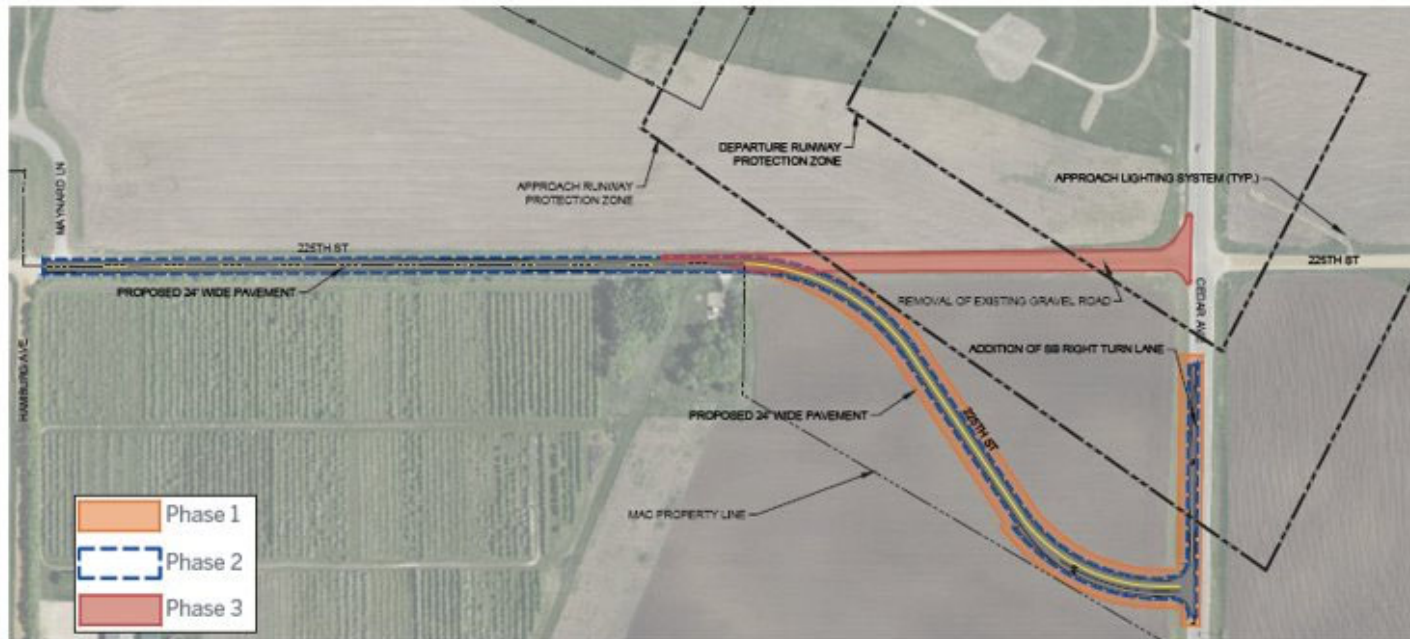


# Business Items



# Roadway Update





### Schedule

Anticipate construction commencing  
June 1, 2026

- Phase 1 will include grading and construction of new roadway and Cedar Ave turn lane.  
Approximate duration: 40 days.
- Phase 2 will include paving of entire project.  
Approximate duration: 10 days.
- Phase 3 will include removal of existing portion of 225th St.  
Approximate duration: 10 days.



### Construction Impact

- Phase 1 Closures: Cedar Ave - SB shoulder closure
- Phase 2 Closures: 225th St from Cedar to Hamburg Ave
- Phase 3 Closures: None anticipated



### Contractor

Friedges Contracting, Inc.



### Contact

**Sam Seafeldt**  
Airport Manager  
612.726.8140

**Tim Wegwerth**  
Project Engineer, SEH  
651.490.2059



# Runway Extension Update



# Airlake Airport

## Federal Environmental Assessment (EA)/ State Environmental Assessment (EAW) Worksheet



June 11, 2026 – Airlake Airport Advisory Commission Meeting  
EA/EAW Relaunch



# Agenda

- Introductions
- Proposed Project
- Environmental Review Process and Schedule
- Project Objectives
- Project Elements
- Environmental Analysis
- Stakeholder Engagement Plan
- Next Steps



# LVN EA/EAW Team



Eric Gilles

- MAC Project Manager & Director of Planning



Michele Ross

- MAC Director of Stakeholder Engagement



Evan Barrett

- Consultant Project Manager (Mead & Hunt)



Colleen Bosold

- Consultant Deputy Project Manager & Engagement Lead (Mead & Hunt)



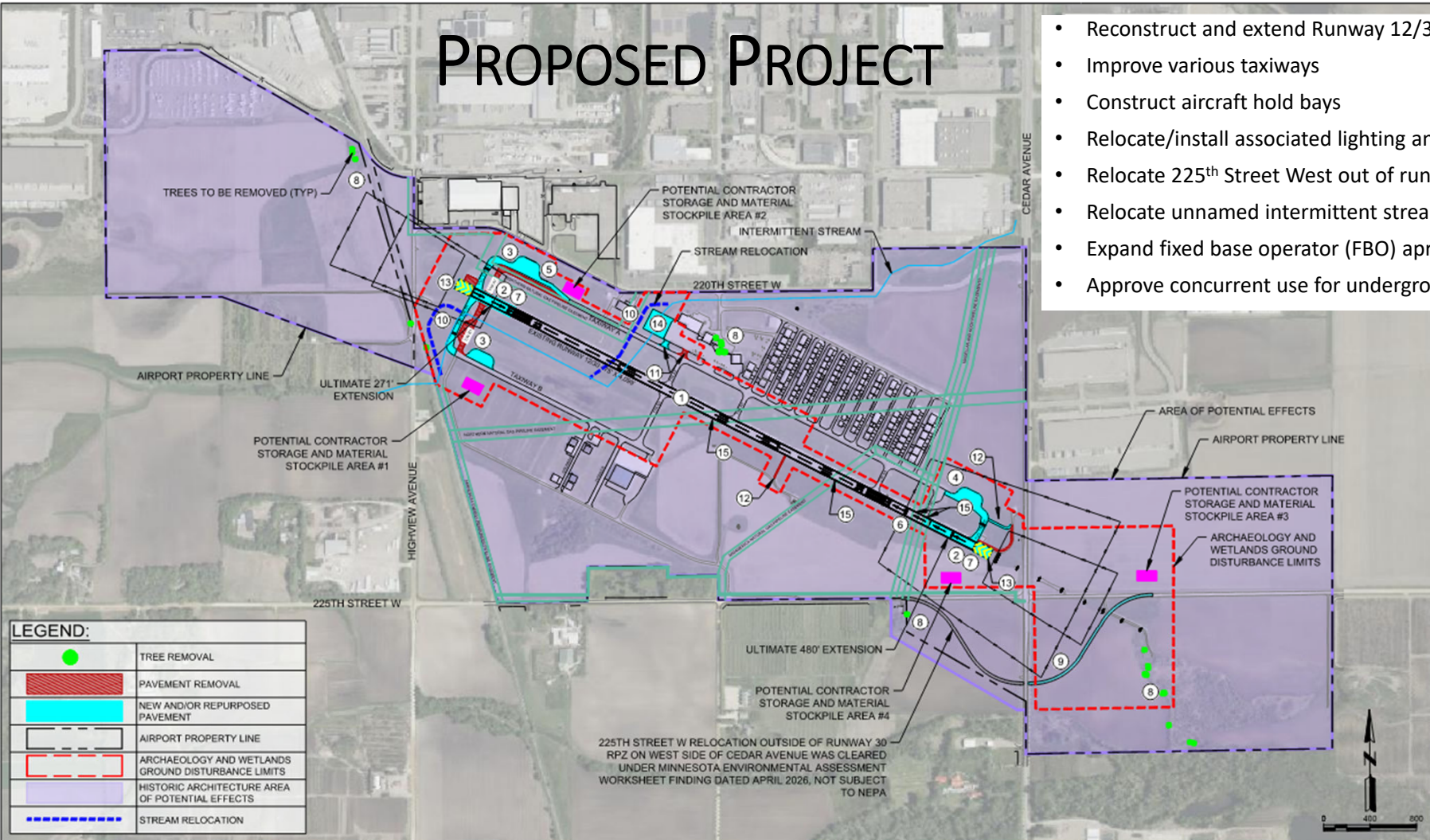
Sarah Emmel

- Consultant Environmental Planning Lead (Mead & Hunt)



# PROPOSED PROJECT

- Reconstruct and extend Runway 12/30 from 4,099' to 4,850'
- Improve various taxiways
- Construct aircraft hold bays
- Relocate/install associated lighting and signage
- Relocate 225<sup>th</sup> Street West out of runway protection zone
- Relocate unnamed intermittent stream
- Expand fixed base operator (FBO) apron
- Approve concurrent use for underground utilities



**LEGEND:**

	TREE REMOVAL
	PAVEMENT REMOVAL
	NEW AND/OR REPURPOSED PAVEMENT
	AIRPORT PROPERTY LINE
	ARCHAEOLOGY AND WETLANDS GROUND DISTURBANCE LIMITS
	HISTORIC ARCHITECTURE AREA OF POTENTIAL EFFECTS
	STREAM RELOCATION

225TH STREET W RELOCATION OUTSIDE OF RUNWAY 30 RPZ ON WEST SIDE OF CEDAR AVENUE WAS CLEARED UNDER MINNESOTA ENVIRONMENTAL ASSESSMENT WORKSHEET FINDING DATED APRIL 2026. NOT SUBJECT TO NEPA



AIRLAKE AIRPORT  
LAKEVILLE, MINNESOTA

2838700-220268.01  
MAY 2026

AIRPORT SPONSOR'S PROPOSED PROJECT



FIGURE 3.7

# Environmental Review Process Overview

- A Federal Environmental Assessment is required by:
  - The National Environmental Policy Act (NEPA), and
  - Associated Federal Aviation Administration (FAA) implementation guidance.
- A State Environmental Assessment Worksheet is required for the project by:
  - The Minnesota Environmental Policy Act (MEPA), and
  - Associated Environmental Quality Board (EQB) implementation guidance.

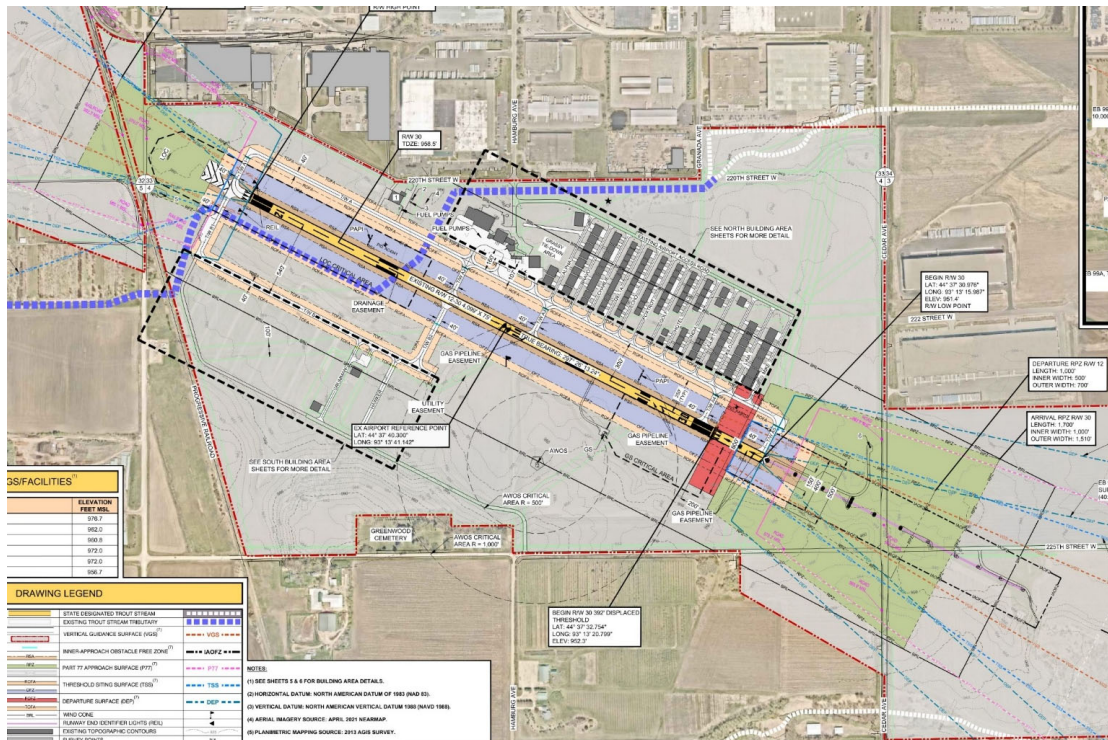


# Environmental Review Process Schedule

Airlake Airport EA/EAW																																			
Projected Timeline																																			
Task	2026																																		
	April				May				June				July				August				September				October										
	6	13	20	27	4	11	18	25	1	8	15	22	29	6	13	20	27	3	10	17	24	31	7	14	21	28	5	12	19	26					
Purpose & Need	[Blue bar]																																		
Alternatives Analysis	[Blue bar]																																		
Environmental Consequences and Affected Environment	[Blue bar]																																		
Draft EA/EAW - FAA Legal Review																			[Purple bar]																
Draft EA/EAW Public Comment Period																			[Green bar]																
Prepare & Publish Final EA/EAW																									[Blue bar]										
Stakeholder Outreach Meetings																																			
Agency Kick-off Meeting (official EA start date)				[Green]																															
Public Meeting/Hearing																																			
Airlake Airport Advisory Committee Meeting																																			
Agency Technical Advisory Panel Meetings				[Green]																															
Schedule dependent on timely FAA, MAC, and agency reviews, and assumes no unforeseen issues. Subject to change.																																			



# Project Objectives



The project objectives include:

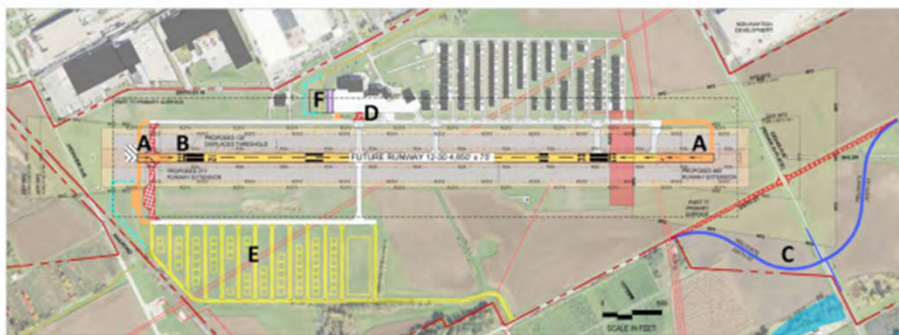
- 1) Reconstruct runway pavement.
- 2) Extend runway to 4,850 feet.
- 3) Minimize incompatible land uses.
- 4) Mitigate airspace obstructions.
- 5) Meet FAA design standards.
- 6) Modify/replace navigational aids.
- 7) Expand the fixed base operator (FBO) aircraft parking apron.



Figure 5-1: 2025 LTCP Preferred Alternative



Figure 5-8: 2035 Preferred Development Alternative



**WHAT AIRPORT IMPROVEMENTS ARE PROPOSED IN THE PLAN?**

The following improvements are recommended and are illustrated on the map.

- Extend both runway ends for a runway length of 4,850 feet (including connector taxiway extensions and rehabilitating the existing runway pavement)
- Displace Runway 12 end for additional airspace clearance over railroad track
- Relocate 225th Street to accommodate runway changes
- Modify some taxiway configurations
- Develop the South Building Area and access roadway
- Expand the aircraft parking apron

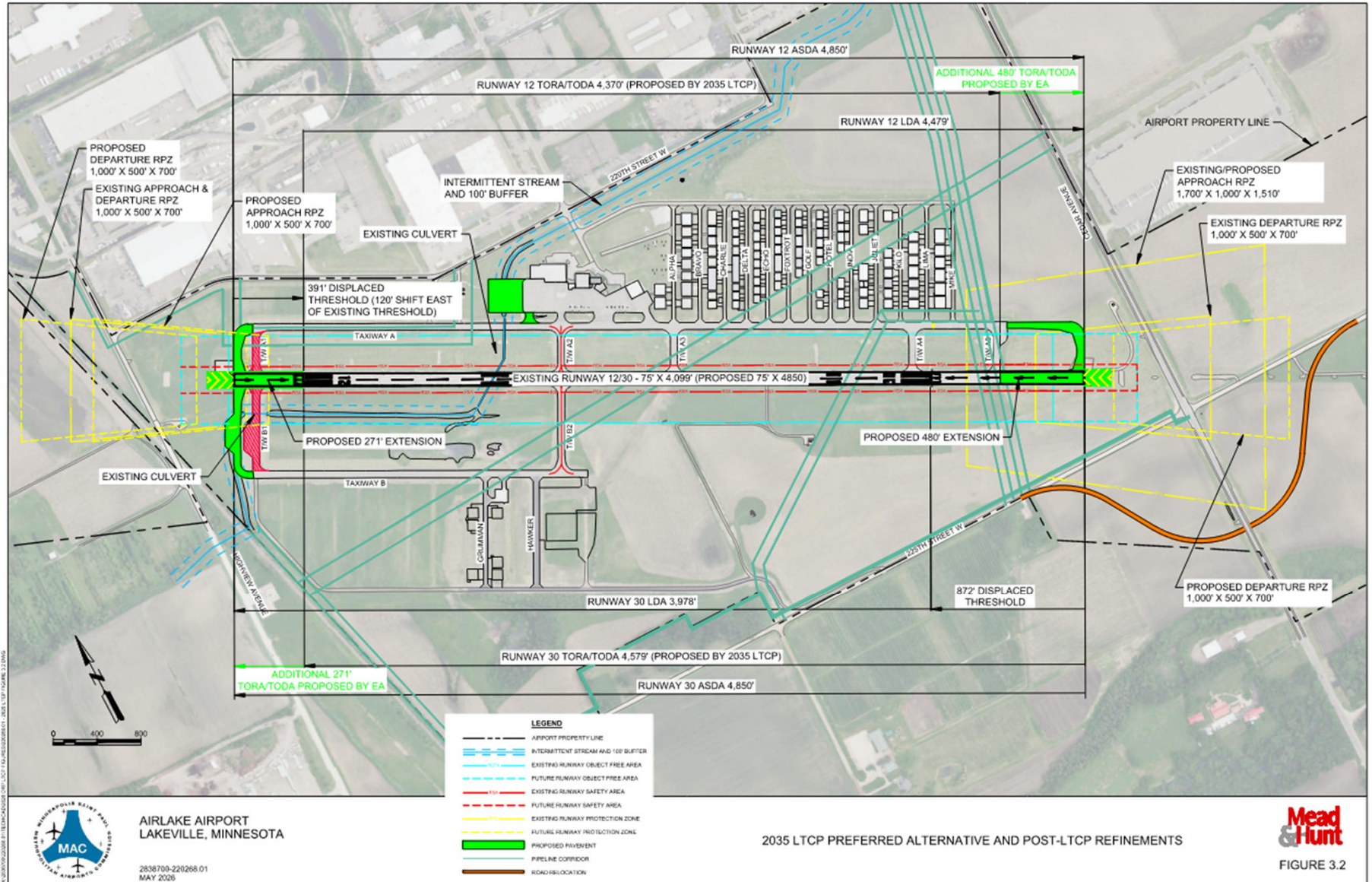
**DRAWING LEGEND**

<ul style="list-style-type: none"> <li>Runway Pavement</li> <li>Future Airfield Geometry</li> <li>Future Apron Expansion Phase I</li> <li>Future Apron Expansion Phase II</li> <li>Future South Building Area</li> </ul>	<ul style="list-style-type: none"> <li>Taxiway - Asphalt Pavement</li> <li>Other Pavement in Use</li> <li>Airport Property Line</li> <li>Building Existing</li> <li>Future Road Relocation</li> </ul>	<ul style="list-style-type: none"> <li>Setback</li> <li>Gas Pipelines</li> <li>Existing Trolley Stream Alignment</li> <li>Proposed Trolley Stream Relocation</li> <li>Perennial</li> </ul>	<ul style="list-style-type: none"> <li>Runway Safety Area</li> <li>Runway Protection Zone</li> <li>Runway Object Free Area</li> <li>Runway Obstacle Free Zone</li> <li>Precision Obstacle Free Zone</li> </ul>
--	---	--	--

# Alternatives

- NEPA requires that alternatives be considered to:
  - Best meet the project objectives.
  - Minimize environmental effects.
- The EA/EAW will rely primarily on the 2025 & 2035 LTCPs, plus a no-action alternative required by NEPA.
- Minor adjustments to the LTCP “preferred alternative”:
  - Declared distances
  - Taxiway design standards
  - Stream relocation





2838700-220268-01\_20250508.DWG - 2025 LTCP PREFERRED ALTERNATIVE AND POST-LTCP REFINEMENTS - 20250508



**AIRLAKE AIRPORT  
LAKEVILLE, MINNESOTA**

2838700-220268-01  
MAY 2025

2035 LTCP PREFERRED ALTERNATIVE AND POST-LTCP REFINEMENTS



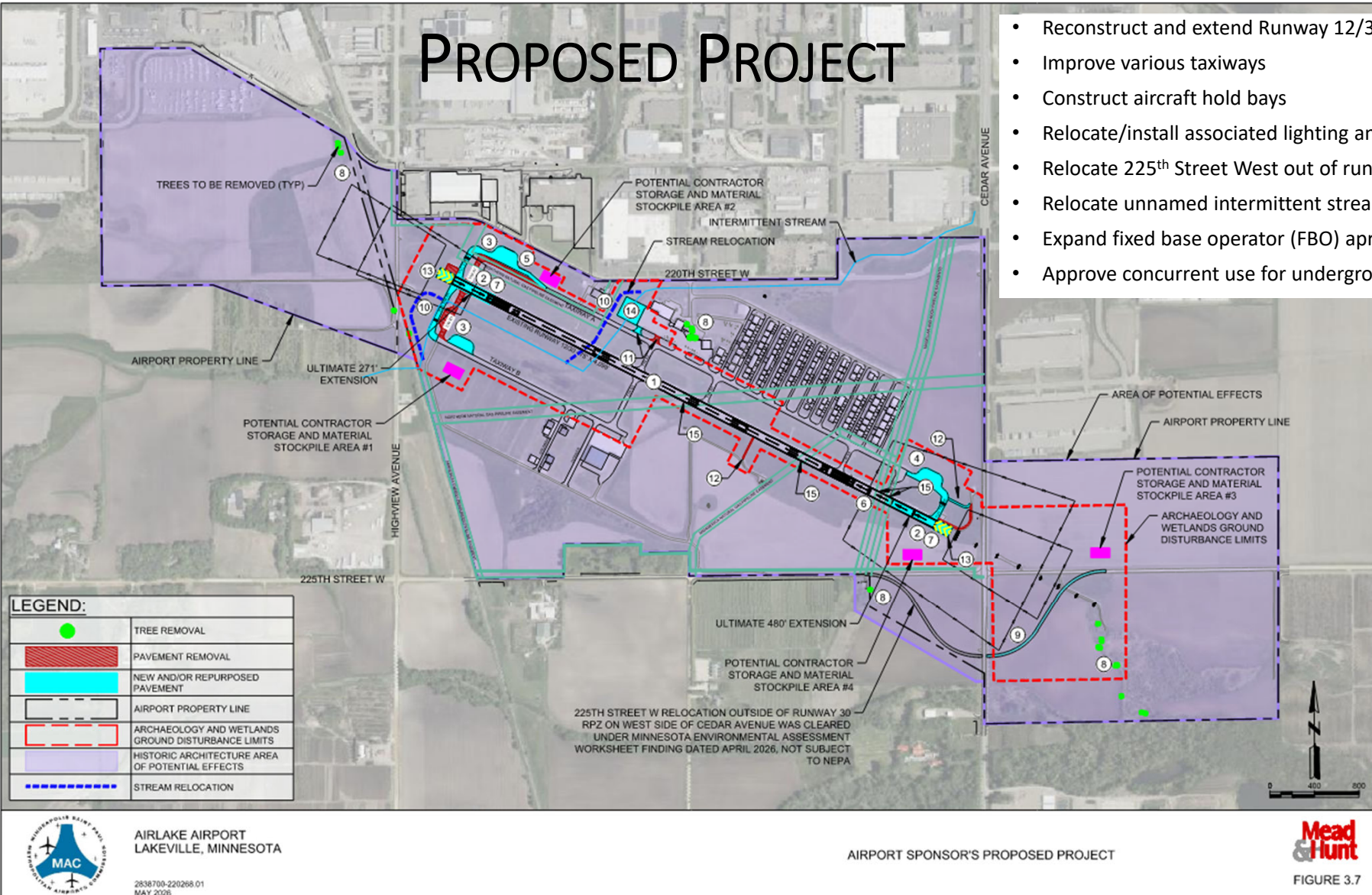
FIGURE 3.2





# PROPOSED PROJECT

- Reconstruct and extend Runway 12/30 from 4,099' to 4,850'
- Improve various taxiways
- Construct aircraft hold bays
- Relocate/install associated lighting and signage
- Relocate 225<sup>th</sup> Street West out of runway protection zone
- Relocate unnamed intermittent stream
- Expand fixed base operator (FBO) apron
- Approve concurrent use for underground utilities



AIRLAKE AIRPORT  
LAKEVILLE, MINNESOTA

2838700-220268.01  
MAY 2026

AIRPORT SPONSOR'S PROPOSED PROJECT



FIGURE 3.7

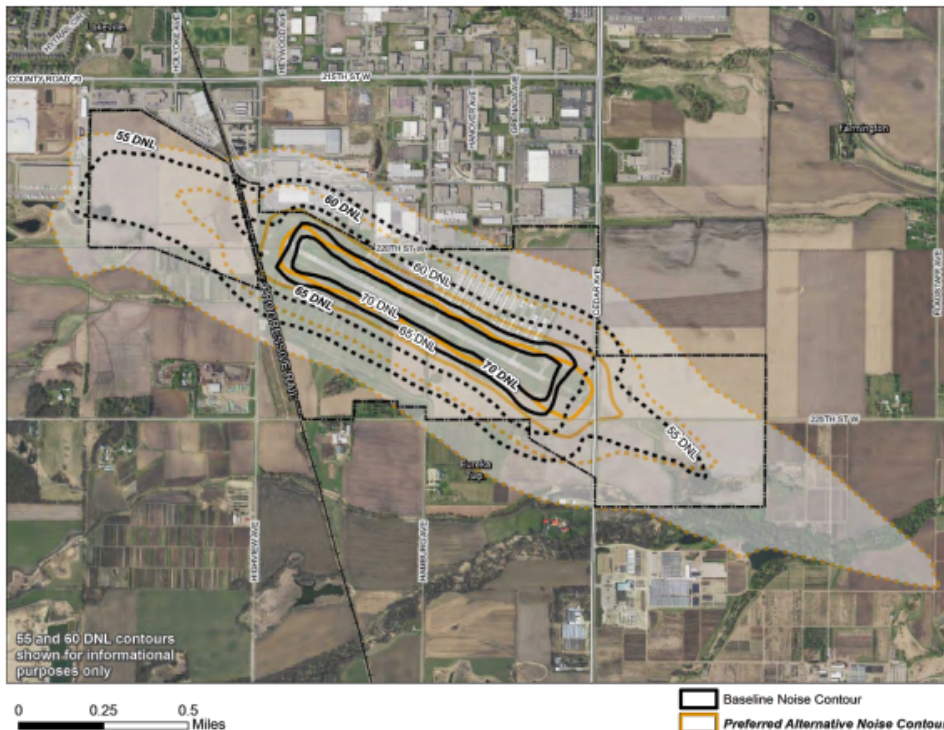
# Environmental Analysis

- **Air quality and aircraft noise**
- Listed species
- Farmlands
- Hazardous materials
- Cultural resources
- **Land use compatibility & zoning**
- Wetland delineation
- **Stream relocation**
- **Stormwater and surface water**
- Other NEPA categories
- State EAW categories
  - Climate
  - Cumulative potential effects



# Air Quality & Aircraft Noise

Figure 6-5: Baseline to 2035 Preferred Alternative Noise Contour Comparison

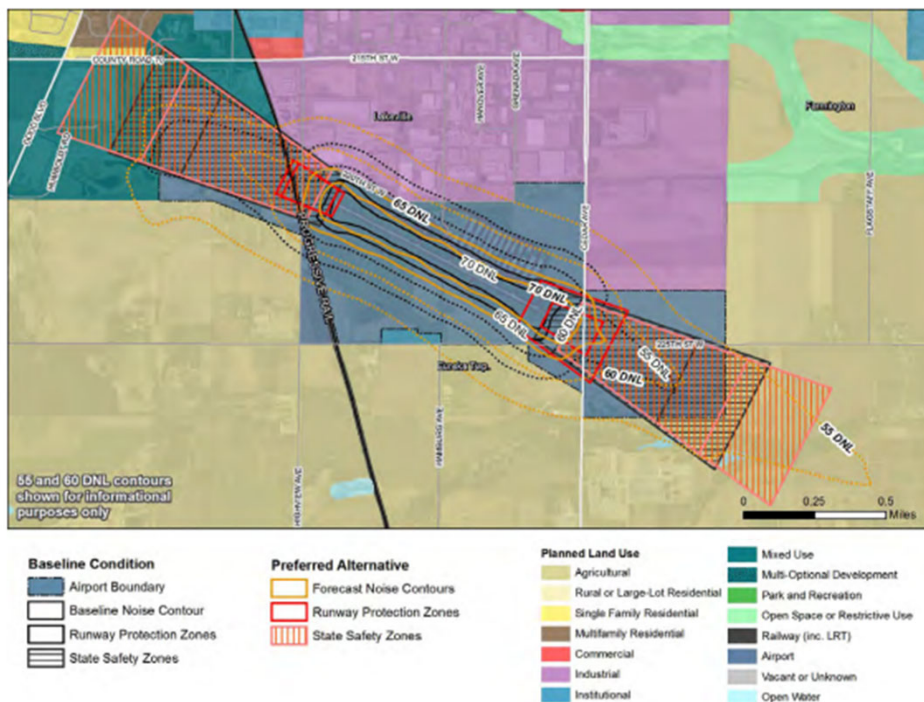


- Dakota County is maintenance area for sulfur dioxide, carbon monoxide, and lead.
- Operational emissions inventory and aircraft noise contours to be developed using FAA Aviation Environmental Design Tool (AEDT).
- Construction emissions inventory to be developed using the Airport Construction Emissions Inventory Tool (ACEIT).
- Any emission increase is expected to be below *de-minimis* thresholds.
- No noise-sensitive land uses are expected to experience an increase in noise exposure.



# Land Use Compatibility & Zoning

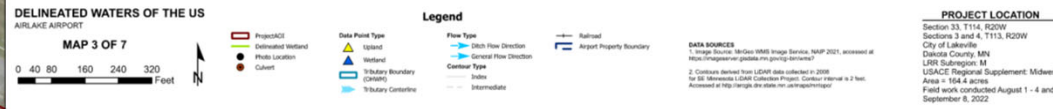
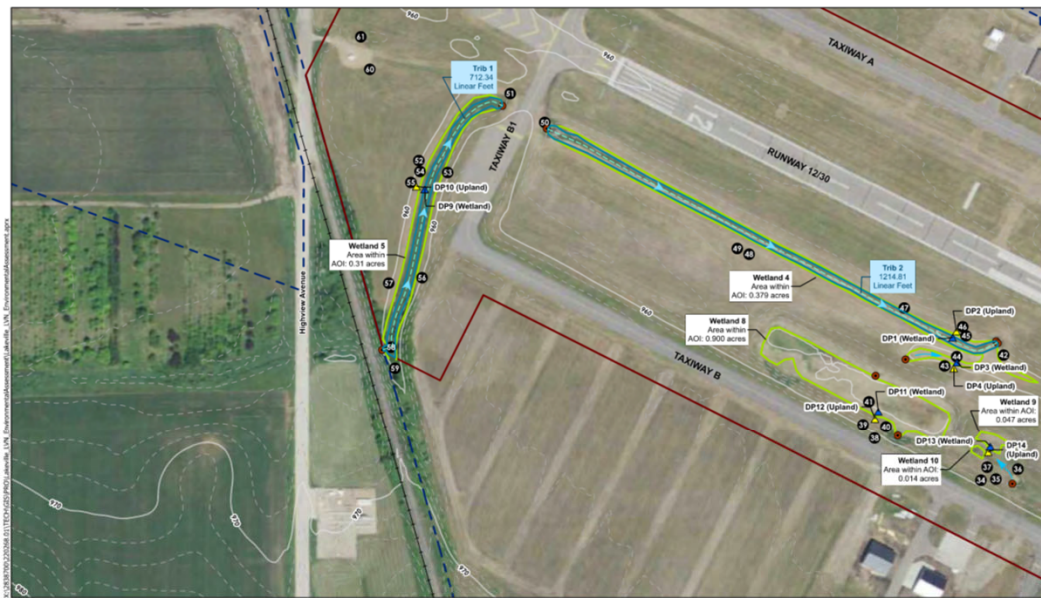
Figure 7-4: Baseline to 2035 Preferred Alternative RPZ, Model State Safety Zone, and Noise Contour Comparison



- Airport zoning will be adopted concurrent with project design and construction.



# Stream Relocation



# Stream Relocation



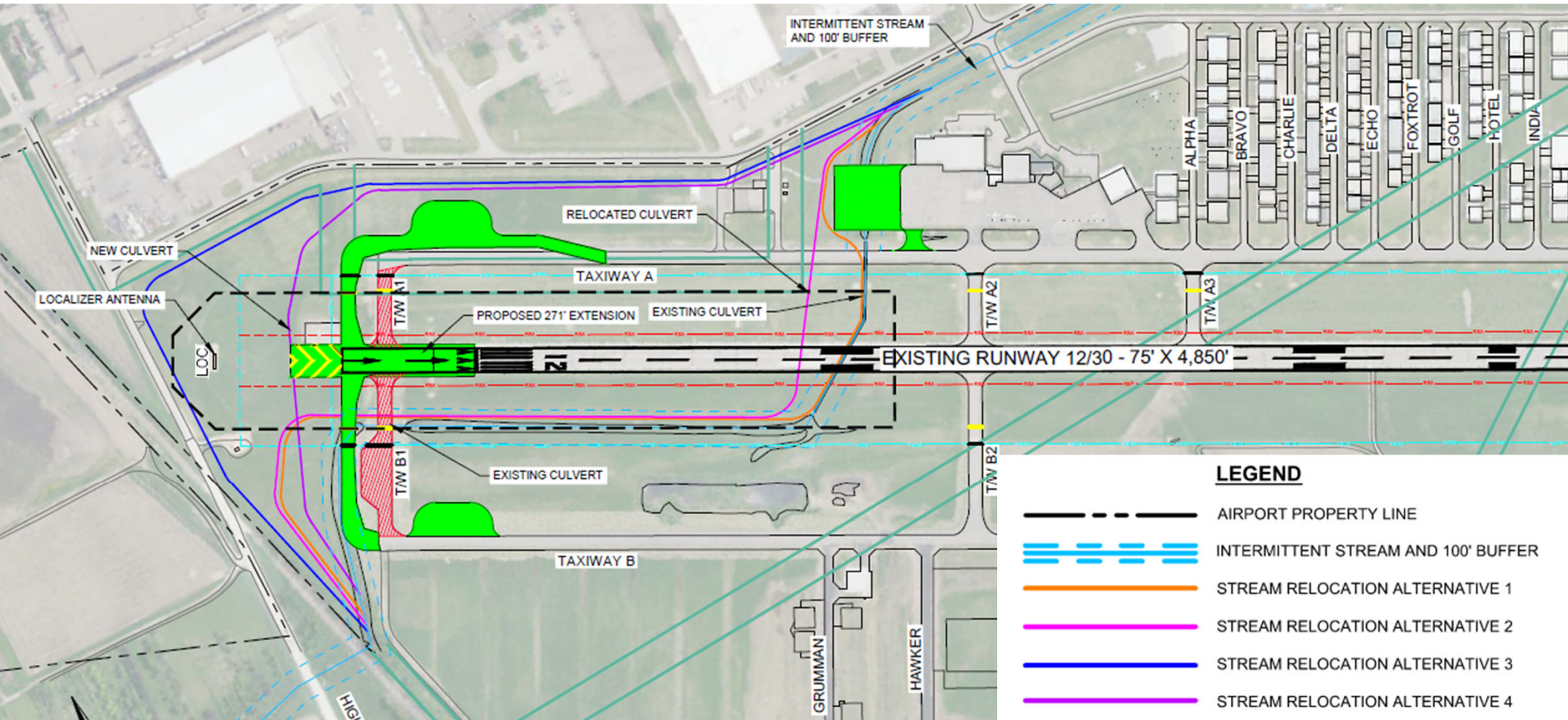
Photo 52. Wetland 5, general site. View to the north.



Photo 69. Wetland 6, general site. View to the north.



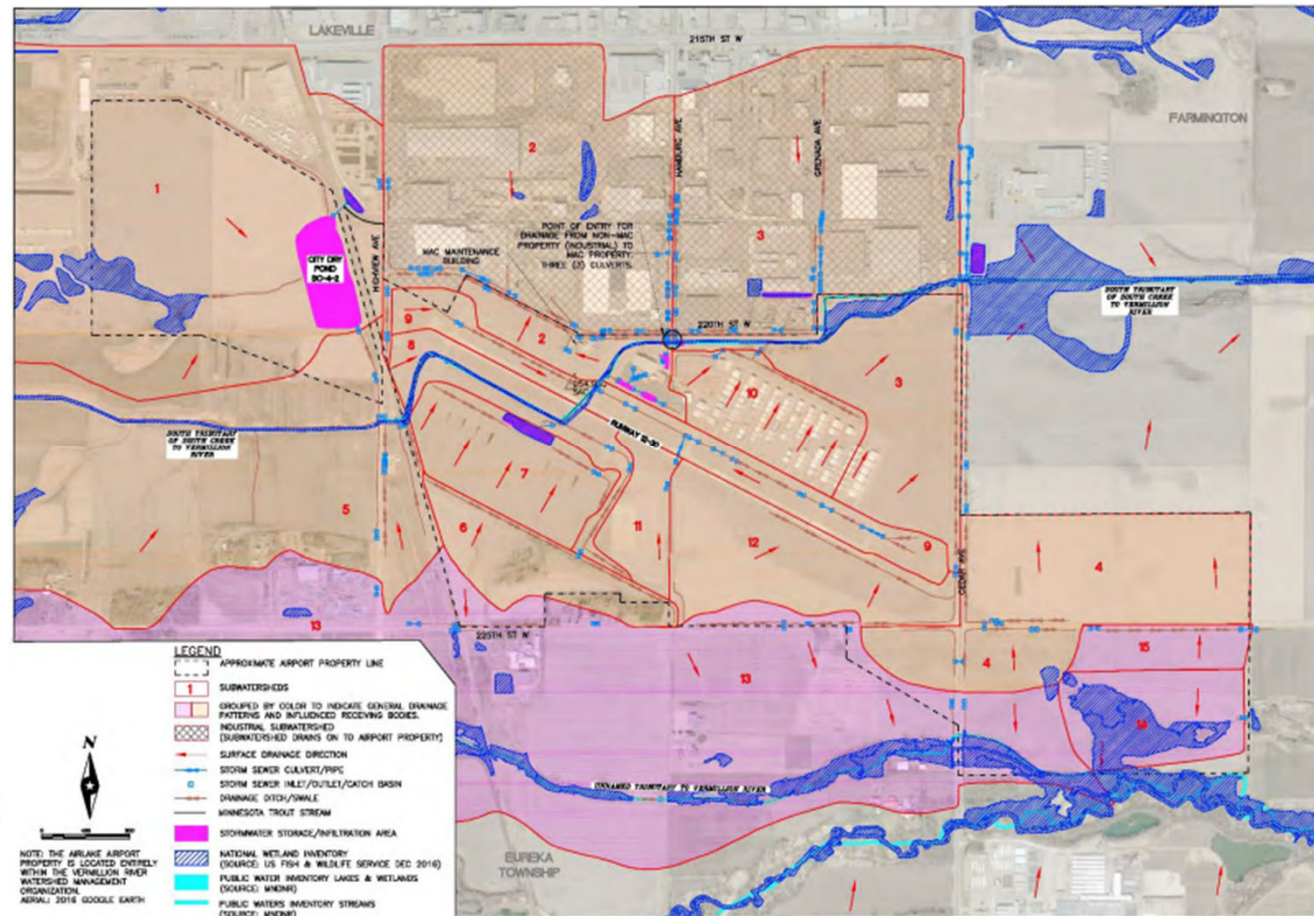
# Stream Relocation



# Stormwater/Surface Water

- Comparative stormwater analysis planned to compare existing and proposed:
  - Temperature
  - Water quality
  - Water quantity

Figure 2-9: Airport Drainage and Wetlands



# Stakeholder Engagement Plan

ALAAC  
Briefings  
(meetings or  
email)

Updates in  
Tenant  
Newsletter

Agency  
Technical  
Advisory Panel  
Meetings

Other  
Meetings/  
Presentations,  
as needed

Project  
Webpages

Public Notices

Postcard  
Mailing for  
Public Hearing

2 Public Events



# Next Steps

- Agency Technical Advisory Panel Meeting on June 16<sup>th</sup>
- Complete Environmental Analysis
- Submit Draft EA/EAW for FAA Review in July
- Hold Initial Public Meeting
  - Tentatively planned for the week of July 20, date/time/location TBD



# Environmental Review Process Schedule

Airlake Airport EA/EAW																													
Projected Timeline		2026																											
Task	April				May				June				July				August				September				October				
	6	13	20	27	4	11	18	25	1	8	15	22	29	6	13	20	27	3	10	17	24	31	7	14	21	28	5	12	19
Purpose & Need	█																												
Alternatives Analysis	█																												
Environmental Consequences and Affected Environment	█																												
Draft EA/EAW - FAA Legal Review													█																
Draft EA/EAW Public Comment Period																			█										
Prepare & Publish Final EA/EAW																			█										
Stakeholder Outreach Meetings																													
Agency Kick-off Meeting (official EA start date)				█																									
Public Meeting/Hearing																													
Airlake Airport Advisory Committee Meeting																													
Agency Technical Advisory Panel Meetings				█																									
Schedule dependent on timely FAA, MAC, and agency reviews, and assumes no unforeseen issues. Subject to change.																													



# Discussion/Questions

- If you have questions regarding the project, please contact:
  - Eric Gilles, MAC Project Manager, at 612.725.4694 or [eric.gilles@mspmac.org](mailto:eric.gilles@mspmac.org)
  - Evan Barrett, Mead & Hunt Project Manager, at 952.641.8820 or [evan.barrett@meadhunt.com](mailto:evan.barrett@meadhunt.com)





# Information Items



# Airport Manager Update

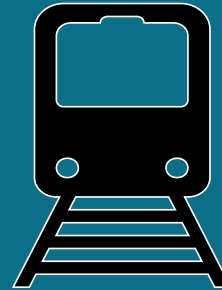
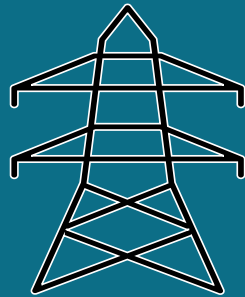


**CERTIFICATE**  
OF RECOGNITION

**Recognition of Nick Modders**



**Update**



# **Construction Updates: Dakota Electric and Rail Project**



# Events

# EAA Father's Day Pancake Breakfast: June 21

# Pan-o-Prog Fly-in Breakfast: July 5





Internal Complaint

May 13, 2026

Re: City of Lakeville  
Various addresses  
Lakeville, CO 55044

Final Report PUC Contact ID: CPT-13671

A review has been completed in response to the internal complaint filed regarding rate change.

The assigned Customer Advocate has confirmed that the premises listed (Attachment A), were visited and investigated. Xcel Energy field agents concluded that each of these premises are not residential and must remain on a commercial rate at this time.

We apologize for any confusion.

Please let me know if there are any further questions.

Sincerely,

*Greg Percida*

Greg Percida, CEAP  
Xcel Energy  
Customer Advocate Analyst  
790 S Buchanan St, Amarillo, TX 79101

Connected • Committed • Trustworthy • Safe

# Update on Franchise Fee



# Member Announcements

**Next ALAAC Meetings:**

**September 10, 2026 and  
December 10, 2026**



**Thank you!**