



Airlake Airport ADVISORY COMMISSION



ALAAC

Regular Meeting

March 13, 2025





REMINDER:
Please
silence your phone
to avoid interruptions
and
mute yourself
when you are not
speaking.

ALAAC PURPOSE AND GOALS

GOAL:

This Commission is formed to further the general welfare of the community and the Airlake Airport, a public airport in the City of Lakeville, County of Dakota, State of Minnesota, through minimizing or resolving problems created by the aircraft operations at the airport.

PURPOSE:

1. The Commission shall advise the community and the Metropolitan Airports Commission with regard to all matters affecting the Airlake Airport, the classification, rules and regulations supplied to the operation of the Airport and the development of lands adjacent to the Airport.
2. The Commission shall cooperate with the Metropolitan Airports Commission staff in reviewing matters affecting the use and control of the Airlake Airport.
3. The Commission shall make its recommendations to the Metropolitan Airports Commission regarding any proposal affecting the use or operations of Airlake Airport.

Agenda

Welcome & Introductions

Agenda Discussion

Consent Items:

- Agenda, Approval of Minutes

Public Comment

Information Items:

- Airport 101: Value of the Airport
- LVN CTAF Change
- Lakeville Housing and Population Growth
- Airport Manager Update

ALAAC Member Announcements

Review Meeting Schedule

Adjourn



Welcome & Introductions



Members & Advisors

Community/Public Representatives	Airport User Representatives	Metropolitan Airports Commission
John Bermel, Co-Chair Lakeville	Tom Fitzhenry, Co-Chair Pilot	Yodit Bizen, MAC Commissioner
Tina Goodroad, Lakeville	Patrick Moynihan, Pilot	Sam Seafeldt, Airport Manager
Donovan Palmquist, Eureka	Adam Forsberg, FBO	Jennifer Lewis, Technical Advisor
Dave Wheeler, Eureka	Dan Wolbert, Pilot	Ryan Anderson, Manager Community Relations
Erin Laberee, Dakota County	Krista Jech, Chamber of Commerce	Carey Metcalfe, Asst. Manager Community Relations
Holly Bernatz, Farmington	Steven Guetter, Pilot	



Consent Items



Public Comment

Members of the public are welcome to share their remarks with the Commission

Please state your name and address

Limit remarks to 3 minutes



Information Items





Airport 101: Value of Airport in the Community



1. Aviation Basics
2. Local Aviation Overview
3. Anatomy of Airlake Airport
4. Community Engagement

1. Aviation Basics

- English is the official language of aviation worldwide
- GMT/UTC is used in aviation to avoid time zone confusion
- Federal Aviation Administration has sole jurisdiction over aviation in US
- Each airport in the world is assigned a four-character code
 - KLVN is Airlake Airport's code ('K' is dropped in local area for simplicity)
- Airspace is public in the United States except where protected for special uses
- Airspace over LVN is shared by many airports

Regulators

Federal

Federal Government: U.S. Department of Transportation delegates authority to the FAA to oversee airports, aircraft, airspace, and flight procedures in the United States

State

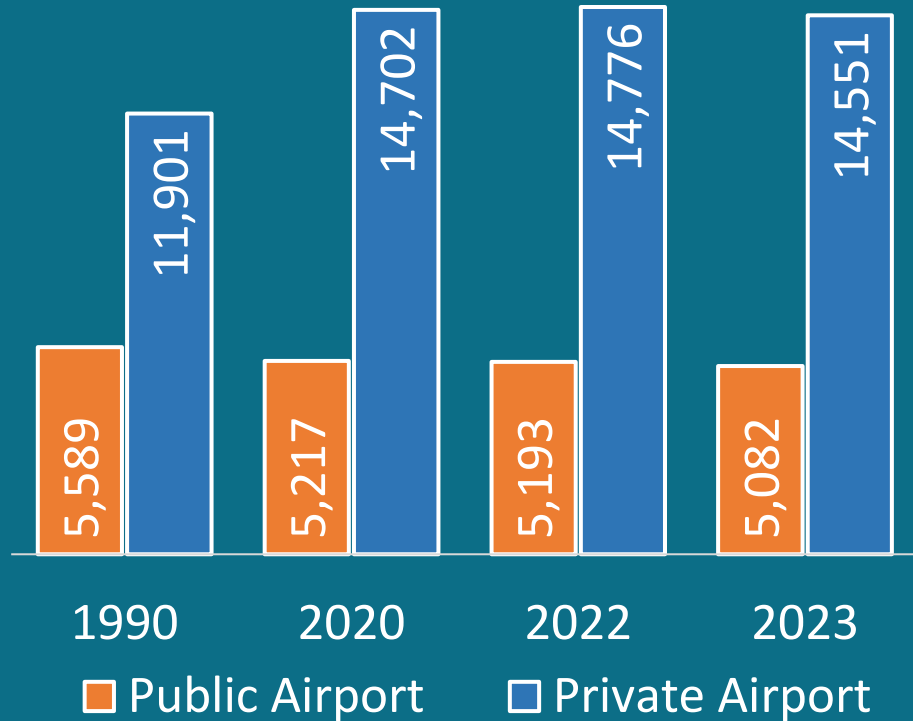
State of MN permits airports and heliports, grants registration for based aircraft, and created the MAC to oversee a system of airports for the twin-cities metropolitan area

Airport

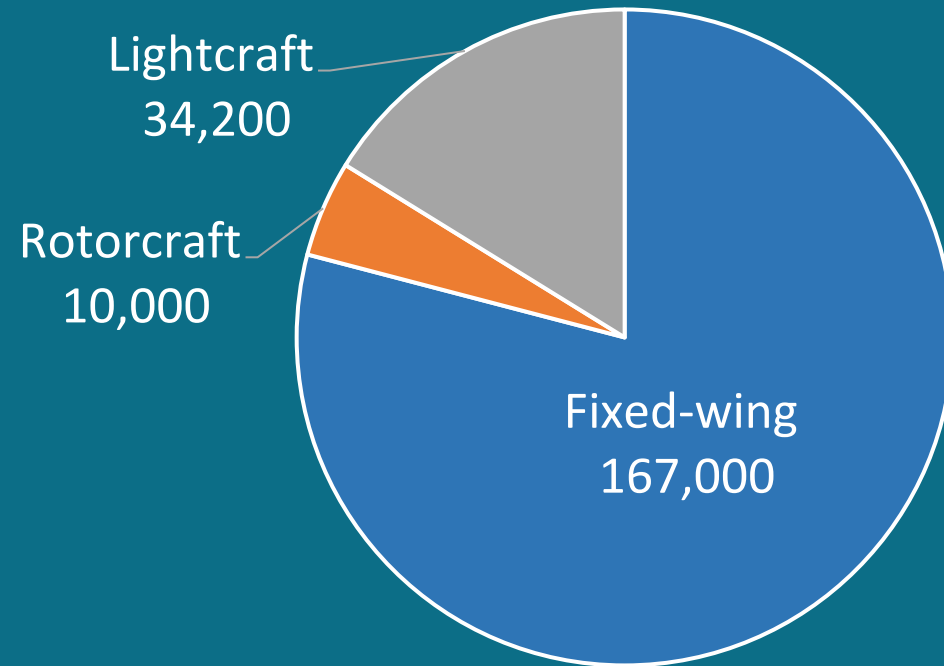
MAC owns and manages facilities for: MSP, STP, FCM, ANE, MIC, 21D, and LVN. Sam Seafeldt is the LVN Airport Manager

U.S. Aviation By the Numbers

Airports



General Aviation Aircraft Types



Sources: https://www.faa.gov/air_traffic/by_the_numbers and <https://www.statista.com/statistics/183496/number-of-airports-in-the-united-states-since-1990/>

Stakeholders



U.S. Value in 2023

General Aviation Flight Hours	26 Million
Aviation Share of GDP	5.2%
Annual Earnings from Aviation	\$488 Billion
U.S. Jobs Generated from Aviation	11 Million

Source: FAA FY 2024
https://www.faa.gov/air_traffic/by_the_numbers



2. Local Aviation Overview

- There are 132 public airports in Minnesota
- MAC owns seven airports: one commercial aviation airport (MSP) and six general aviation airports (LVN, ANE, FCM, MIC, STP, and 21D)
- Minnesota State Statute 473.641 restricts the length of runways to 5,000 feet for “Minor” Airports such as the Airlake Airport
- Airlake Airport (LVN) is established as a Reliever Airport to enhance and support aviation system needs and relieve corporate & recreational air traffic congestion at MSP

MAC Board Overview

15 Members: State-wide Representation

Board Chair - Rick King



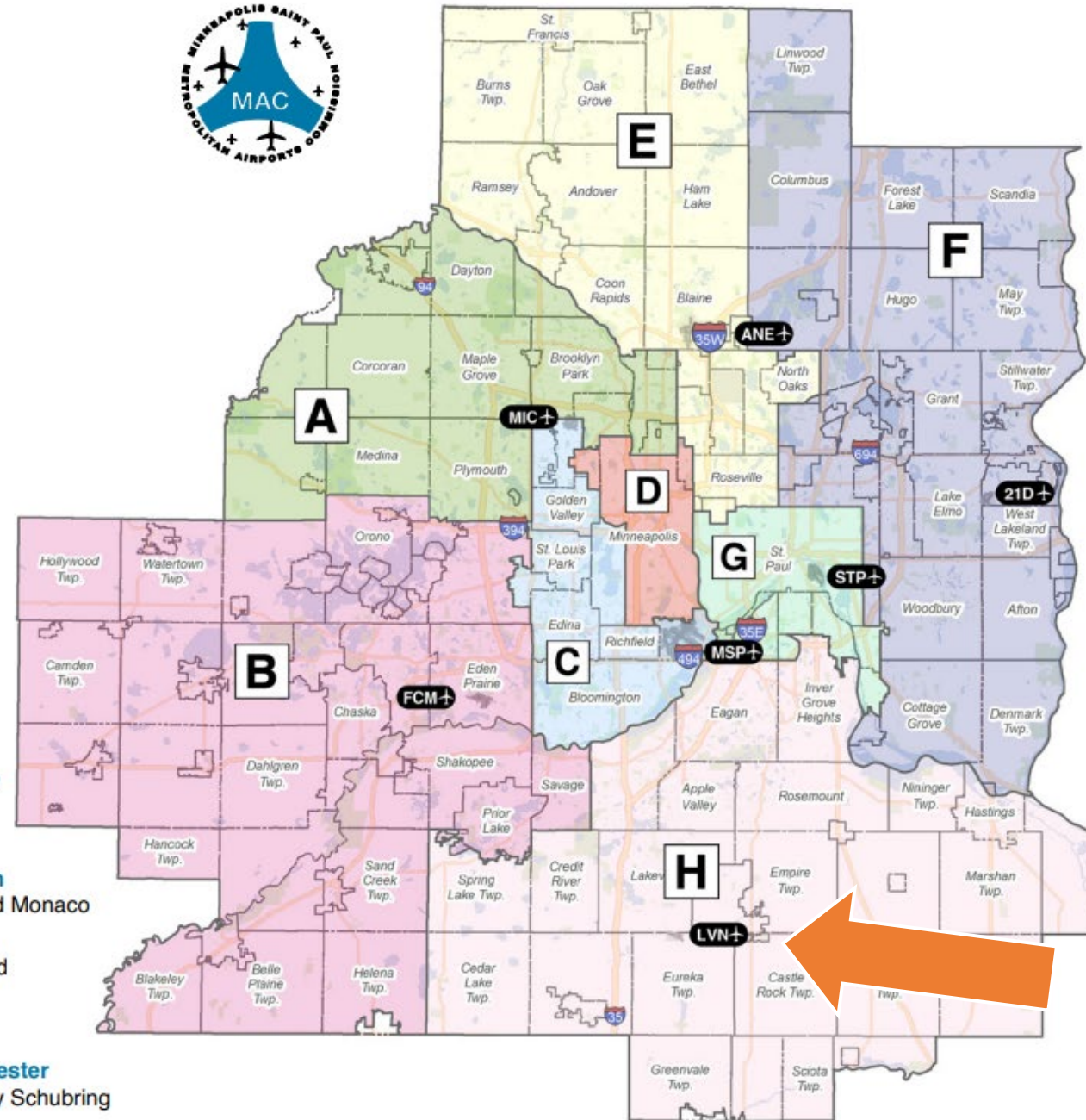
- A** Carl Crimmins
- B** Braj Agrawal
- C** James Lawrence
- D**
- E** James Deal
- F** Rodney Skoog
- G** Richard Ginsberg
- H** Yodit Bizen

Minneapolis - Lelil Fatehi

St. Paul - Ikram Koliso

Outstate Representatives

- Thief River Falls
Dixie Hoard
- Duluth
Donald Monaco
- St. Cloud
Patti Gartland
- Rochester
Randy Schubring





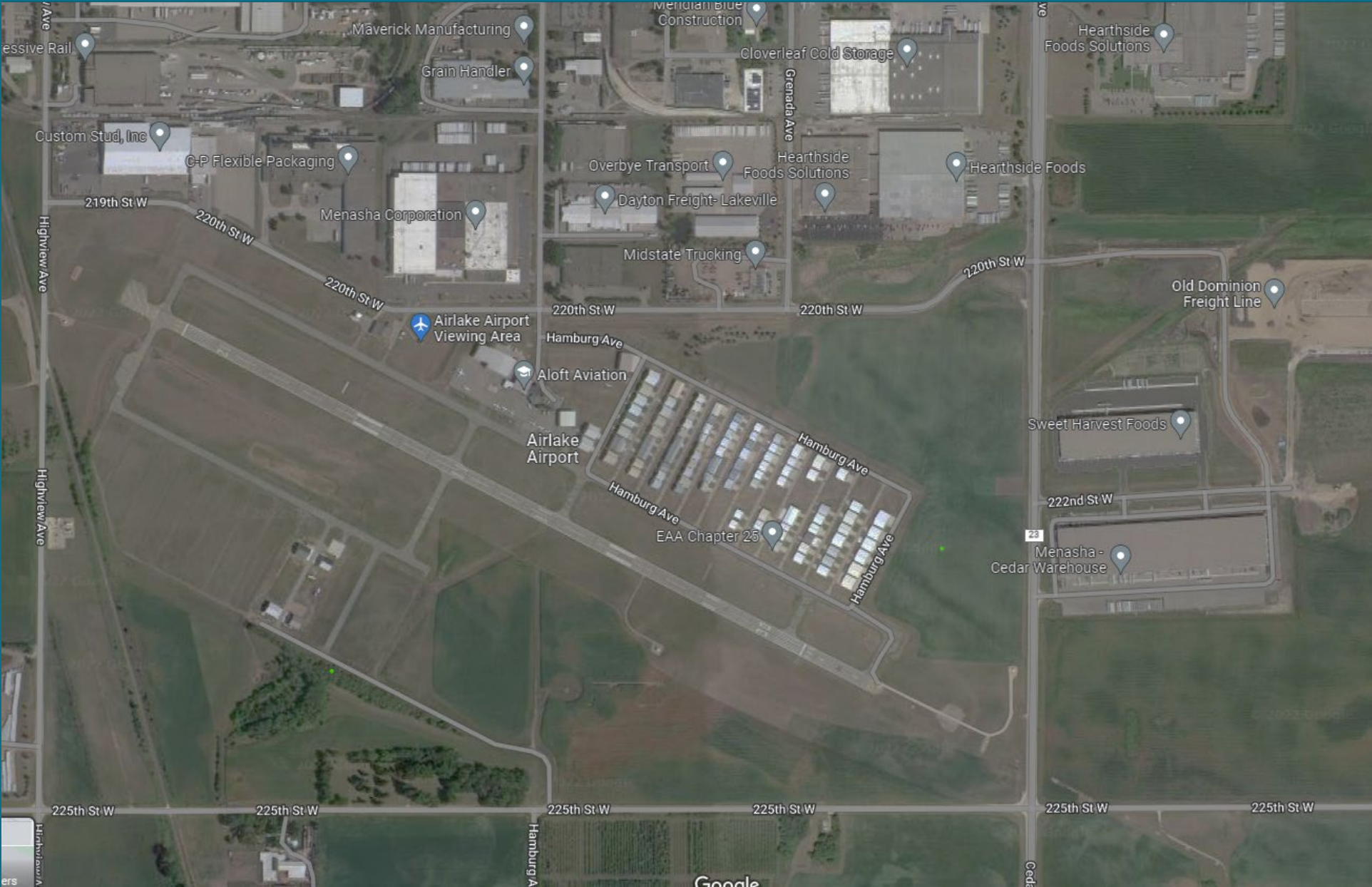
Airlake Airport Then and Now... (1970 and 2024)



Airlake Airport & Lakeville Business -2019



Airlake Airport & Lakeville Business -2021



Airlake Airport & Lakeville Business -2022



The “Rules” at LVN

- Federal regulations apply to all flight operations in U.S.
- MAC airports are open for public-use 24 hours per day
- Pilots can arrive and depart using any FAA-certificated aircraft type
- The traffic pattern altitude at LVN is 1,000 feet above ground
(note: aircraft in the process of taking off or landing do not have minimum altitudes (14 CFR 91.119))
- Noise abatement best practices at MAC airports are voluntary
- Wind direction determines runway use



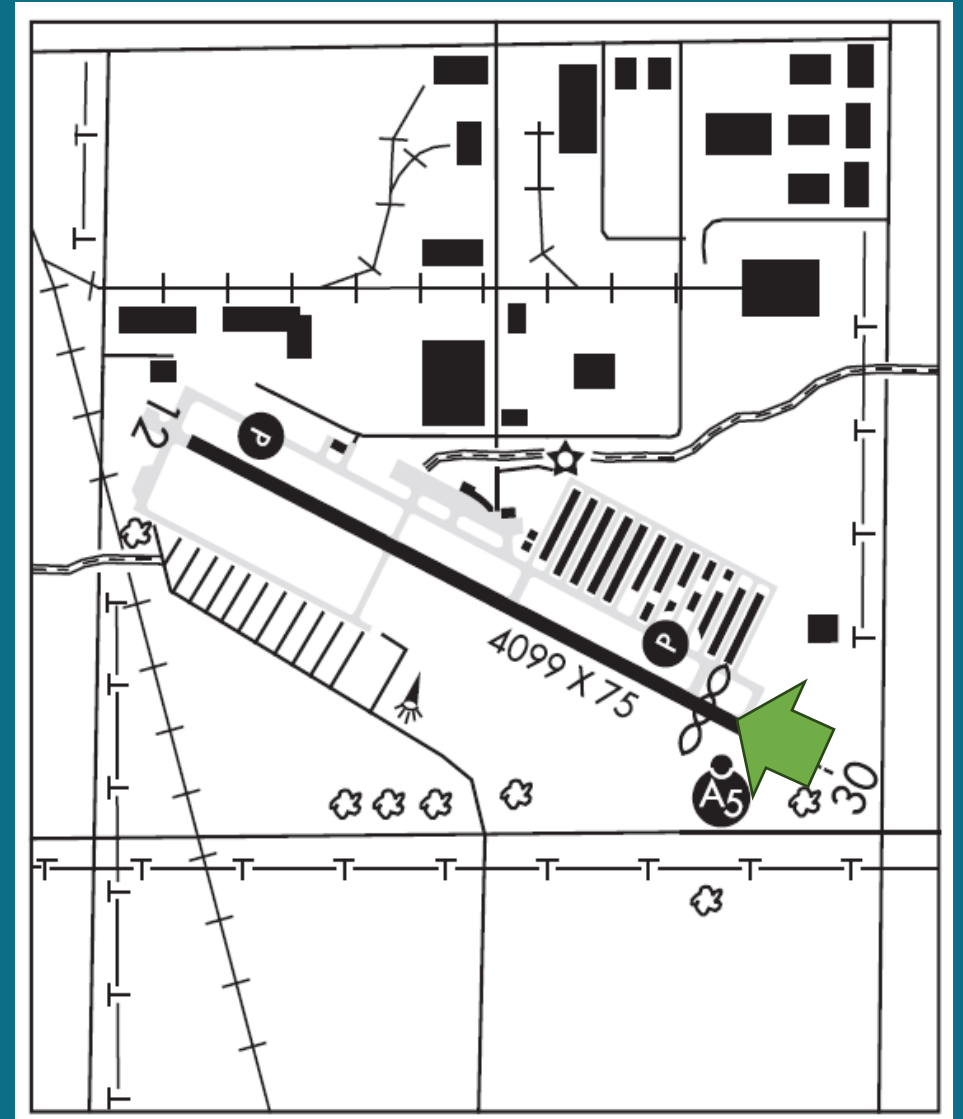
3. Anatomy of Airlake Airport (LVN)

Runway 12/30

- 4,099 feet long x 75 feet wide
- Northwest / southeast alignment
- Surface designated for take-off and landing
- Named based on compass headings
- Runway 30 is the Calm Wind Runway

Taxiway

Surface designed for getting aircraft to and from the runway



Other Basic Features of Airlake Airport:

Fixed Base Operator (FBO)

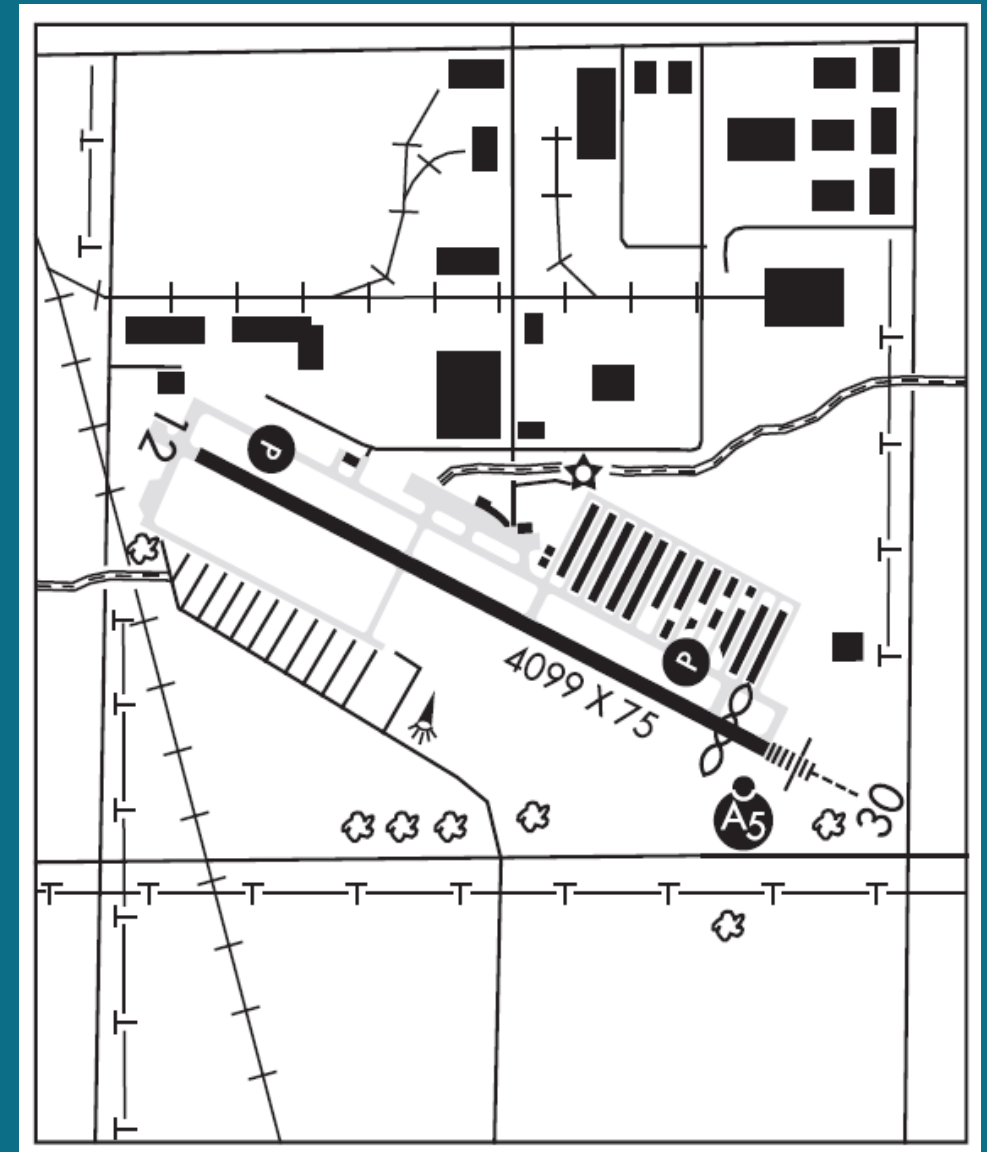
Aviation Services Provider
Aloft and Aircraft Resource Center

Hangar Area

Aircraft storage buildings

Weather Monitoring

Airport Access Roadways



Note: LVN is a non-towered airport (it does not have an Air Traffic Control Tower)

Aircraft Types that Use LVN



The most common type of aircraft that operates at MAC reliever airports are propeller-driven with a single engine.



Twin-engine aircraft, jets, and helicopters also use LVN.



Year (MACNOMS)	Aircraft Operations
2022	38,170
2023	38,268
2024	42,611

Technical Systems at Airlake Airport

- Lighting
- Navigational Aids



UNITED STATES GOVERNMENT FLIGHT INFORMATION PUBLICATION

CHART SUPPLEMENT NORTH CENTRAL U.S.

Effective 0901Z **20 FEB 2025**
to 0901Z **17 APR 2025**



Consult NOTAMs for latest information
Consult/Subscribe to FAA Safety Alerts and Charting Notices at:
https://www.faa.gov/air_traffic/flight_info/aeronav/safety_alerts/
Warning: Refer to current foreign charts and flight information publications
for information within foreign airspace
Published from digital files compiled in accordance with Interagency Air
Committee specifications and agreements approved by: Department of
Defense • Federal Aviation Administration



Airfield Lighting Systems



LVN Runway 30 Night Approach:
<https://vimeo.com/1065201401/659ad19a0d>



LVN Runway 12 Night Approach:
<https://vimeo.com/1065201369/22cf0147bd>

Special THANKS to Tom Fitzhenry and Al Alwin for the video footage!

PAPI

Precision Approach Path Indicator



REIL

Runway End Identifier Lights



Airport Beacon



Instrument Approach Procedures

MINNEAPOLIS, MINNESOTA AL-6652 (FAA) 25051

VOR RWY 12 AIRLAKE (L,V,N)

VORTAC FGT 115.7 CH 104 APP CRS 085° Rwy Idg 4099 TDZE 961 Apt Elev 961

AWOS-3 118.0 MINNEAPOLIS APP CON 134.7 284.7 CINC DEL 118.95 UNICOM 123.0 (CTAF)

MISSED APPROACH: Climb to 2800 then right turn direct FGT VORTAC and hold.

REIL Rwy 12 HIRL Rwy 12-30

FAF to MAP 4.7 NM

44°38'N-93°14'W

Category	A	B	C	D
S-12	1660-1	699 (700-1)	1660-2	699 (700-2)
CIRCLING	1660-1	699 (700-1)	1660-2	1700-2½ 699 (700-2)
CSPI FIX MINIMUMS				
S-12	1520-1	559 (600-1)	1520-1½	559 (600-1½)
CIRCLING	1520-1	559 (600-1)	1660-2	1700-2½ 699 (700-2)

MINNEAPOLIS, MINNESOTA AL-6652 (FAA) 25051

ILS or LOC RWY 30 AIRLAKE (L,V,N)

LOC I-LVN 108.9 APP CRS 294° Rwy Idg 3707 TDZE 958 Apt Elev 961

AWOS-3 118.0 MINNEAPOLIS APP CON 134.7 284.7 CINC DEL 118.95 UNICOM 123.0 (CTAF)

MISSED APPROACH: Climb to 1500 then climbing left turn to 2800 direct FGT VORTAC and hold.

REIL Rwy 12 HIRL Rwy 12-30

FAF to MAP 5.1 NM

44°38'N-93°14'W

Category	A	B	C	D
S-ILS 30	1208-¾ 250 (300-¾)			
S-LOC 30	1400-¾	442 (500-¾)	1400-¾	442 (500-¾)
CIRCLING	1460-1	499 (500-1)	1660-2	1700-2½ 699 (700-2)

MINNEAPOLIS, MINNESOTA AL-6652 (FAA) 25051

RNAV (GPS) RWY 12 AIRLAKE (L,V,N)

WAAS CH 57920 W12A APP CRS 114° Rwy Idg 4099 TDZE 961 Apt Elev 961

AWOS-3 118.0 MINNEAPOLIS APP CON 134.7 284.7 CINC DEL 118.95 UNICOM 123.0 (CTAF)

MISSED APPROACH: Climb to 3600 direct ZARRH and hold.

REIL Rwy 12 HIRL Rwy 12-30

FAF to MAP 5.1 NM

44°38'N-93°14'W

Category	A	B	C	D
LPV DA	1211-1 250 (300-1)			
INAV/ VNAV DA	1270-1 309 (400-1)			
INAV MDA	1400-1	439 (500-1)	1400-1½	439 (500-1½)
CIRCLING	1460-1	499 (500-1)	1660-2	1700-2½ 699 (700-2)

MINNEAPOLIS, MINNESOTA AL-6652 (FAA) 25051

RNAV (GPS) RWY 30 AIRLAKE (L,V,N)

WAAS CH 99328 W30A APP CRS 295° Rwy Idg 3707 TDZE 958 Apt Elev 961

AWOS-3 118.0 MINNEAPOLIS APP CON 134.7 284.7 CINC DEL 118.95 UNICOM 123.0 (CTAF)

MISSED APPROACH: Climb to 3000 direct JUNTU and hold.

REIL Rwy 12 HIRL Rwy 12-30

FAF to MAP 4.7 NM

44°38'N-93°14'W

Category	A	B	C	D
LPV DA	1158-¾ 200 (200-¾)			
INAV/ VNAV DA	1246-¾ 288 (300-¾)			
INAV MDA	1320-¾	362 (400-¾)	1320-¾	362 (400-¾)
CIRCLING	1460-1	499 (500-1)	1660-2	1700-2½ 699 (700-2)

ILS

Instrument Landing System



MALSR

Medium intensity Approach Light System with Runway alignment indicator lights



Farmington VOR

(Very-high frequency Omnidirectional Range)



4. Community Value

- Transportation & Connection
- Education, Training, & Jobs
- Access to Services & Resources
- Events & Engagement



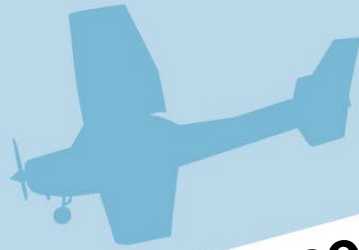


CIVIL AIR PATROL
U.S. AIR FORCE AUXILIARY





2024 AIRLAKE AIRPORT (LVN) BY THE NUMBERS



(2025 BTN In-Process)



139
based aircraft



106
leases



38,678
annual flight operations

\$13.2M
economic output annually



\$431,222
annual operating revenue

1
fixed based operator (FBO)

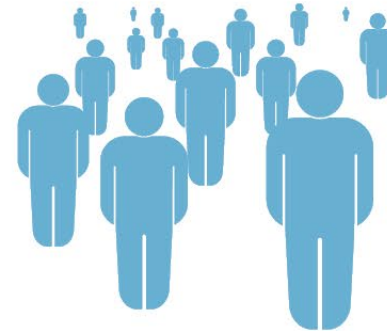


1
runway



4,098
total feet of runway pavement

104
jobs supported



212
runway and taxiway lights



8
pieces of equipment
maintaining the airfield
and airport grounds

595
acres

1 Flight school › **No** Air Traffic Control Tower › 1 Full-time Airport Maintenance Staff › 1 Civil Air Patrol
1 EAA Chapter › In the community since **1966** › Owned by the MAC since **1981** › On-site public viewing area

MAC Video: What is General Aviation?

What is General Aviation?



<https://youtu.be/gRBKnHR1xds>

Questions?





Radio Frequency Change Update



Lakeville Housing and Population Growth

Tina Goodroad



More information is available here:

<https://gis2.lakevillemn.gov/portal/apps/storymaps/stories/f55d79b45338425ba0fd14dd7f1d8bae>

Thank You



More information is available here:

<https://gis2.lakevillemn.gov/portal/apps/storymaps/stories/f55d79b45338425ba0fd14dd7f1d8bae>



Airport Manager Update





Member Announcements



2025 ALAAC Meeting Schedule:

May							June							July							August						
S	M	T	W	T	F	S	S	M	T	W	T	F	S	S	M	T	W	T	F	S	S	M	T	W	T	F	S
				1	2	3	1	2	3	4	5	6	7			1	2	3	4	5						1	2
4	5	6	7	8	9	10	8	9	10	11	12	13	14	6	7	8	9	10	11	12	3	4	5	6	7	8	9
11	12	13	14	15	16	17	15	16	17	18	19	20	21	13	14	15	16	17	18	19	10	11	12	13	14	15	16
18	19	20	21	22	23	24	22	23	24	25	26	27	28	20	21	22	23	24	25	26	17	18	19	20	21	22	23
25	26	27	28	29	30	31	29	30						27	28	29	30	31			24	25	26	27	28	29	30
																					31						
September							October							November							December						
S	M	T	W	T	F	S	S	M	T	W	T	F	S	S	M	T	W	T	F	S	S	M	T	W	T	F	S
	1	2	3	4	5	6				1	2	3	4							1		1	2	3	4	5	6
7	8	9	10	11	12	13	5	6	7	8	9	10	11	2	3	4	5	6	7	8	7	8	9	10	11	12	13
14	15	16	17	18	19	20	12	13	14	15	16	17	18	9	10	11	12	13	14	15	14	15	16	17	18	19	20
21	22	23	24	25	26	27	19	20	21	22	23	24	25	16	17	18	19	20	21	22	21	22	23	24	25	26	27
28	29	30					26	27	28	29	30	31		23	24	25	26	27	28	29	28	29	30	31			
														30													



Thank you for attending!



Adjourned