



# Airlake Airport ADVISORY COMMISSION

---



ALAAC

## Regular Meeting

September 8, 2022





REMINDER:

Please  
silence your phone  
to avoid  
interruptions  
and  
mute yourself  
when you are not  
speaking.

# PURPOSE AND GOALS

## GOAL:

This Commission is formed to further the general welfare of the community and the Airlake Airport, a public airport in the City of Lakeville, County of Dakota, State of Minnesota, through minimizing or resolving problems created by the aircraft operations at the airport.

## PURPOSE:

1. The Commission shall advise the community and the Metropolitan Airports Commission with regard to all matters affecting the Airlake Airport, the classification, rules and regulations supplied to the operation of the Airport and the development of lands adjacent to the Airport.
2. The Commission shall cooperate with the Metropolitan Airports Commission staff in reviewing matters affecting the use and control of the Airlake Airport.
3. The Commission shall make its recommendations to the Metropolitan Airports Commission regarding any proposal affecting the use or operations of Airlake Airport.



# Agenda

Welcome & Introductions

Consent Items:

- Agenda, Approval of Minutes

Public Comment

Aloft Construction Update

Airport Manager Update

Environment 101

Q2 Aircraft Operations & Noise Complaints

Young Eagles Program

South St. Paul Airport Closure Effects

Member Comments/Announcements

Meeting Dates/Times & Locations





# Welcome & Introductions





# Members & Coordinators

<b>Community/Public Representatives</b>	<b>Airport User Representatives</b>	<b>Metropolitan Airports Commission</b>
<b>John Bermel, Co-Chair Lakeville</b>	<b>Tom Fitzhenry, Co-Chair Pilot</b>	<b>Yodit Bizen, MAC Commissioner</b>
<b>Tina Goodroad, Lakeville</b>	<b>Patrick Moynihan, Pilot</b>	<b>Blaine Peterson, Technical Advisor</b>
<b>Nancy Sauber, Eureka</b>	<b>Adam Forsberg, FBO</b>	<b>Jennifer Lewis, Meeting Coordinator</b>
<b>Randy Wood, Eureka</b>	<b>Dan Wolbert, Pilot</b>	<b>Kalae Verdeja, Meeting Secretary</b>
<b>Katie Porter, Farmington</b>	<b>Krista Jech, Chamber of Commerce</b>	<b>Michele Ross, Community Relations</b>
<b>Erin Laberee, Dakota County</b>	<b>Steven Guetter, Pilot</b>	



# Consent Items:

- Agenda
- Approval of Minutes for 6-2-2022





# Public Comment

Members of the public are welcome to share their remarks with the Commission.  
Please state your name and address

Limit remarks to 3 minutes





# Aloft Construction Update





# Airport Manager Update



# Airport Manager Update

- **Pan-o-Prog**
- **Runway Construction Update**
- **Windsock**



# Airlake Airport Advisory Commission

Environment 101:

Federal Environmental Assessment/State Environmental Assessment  
Worksheet (EA/EAW)  
Airlake Airport (LVN)

September 8, 2022



LVN AIRLAKE EAEAW





# LVN EA/EAW TEAM



Eric Gilles

- MAC Project Manager & Airport Planner



Michele Ross

- MAC Assistant Manager, Community Relations



Evan Barrett

- Consultant Project Manager



Colleen Bosold

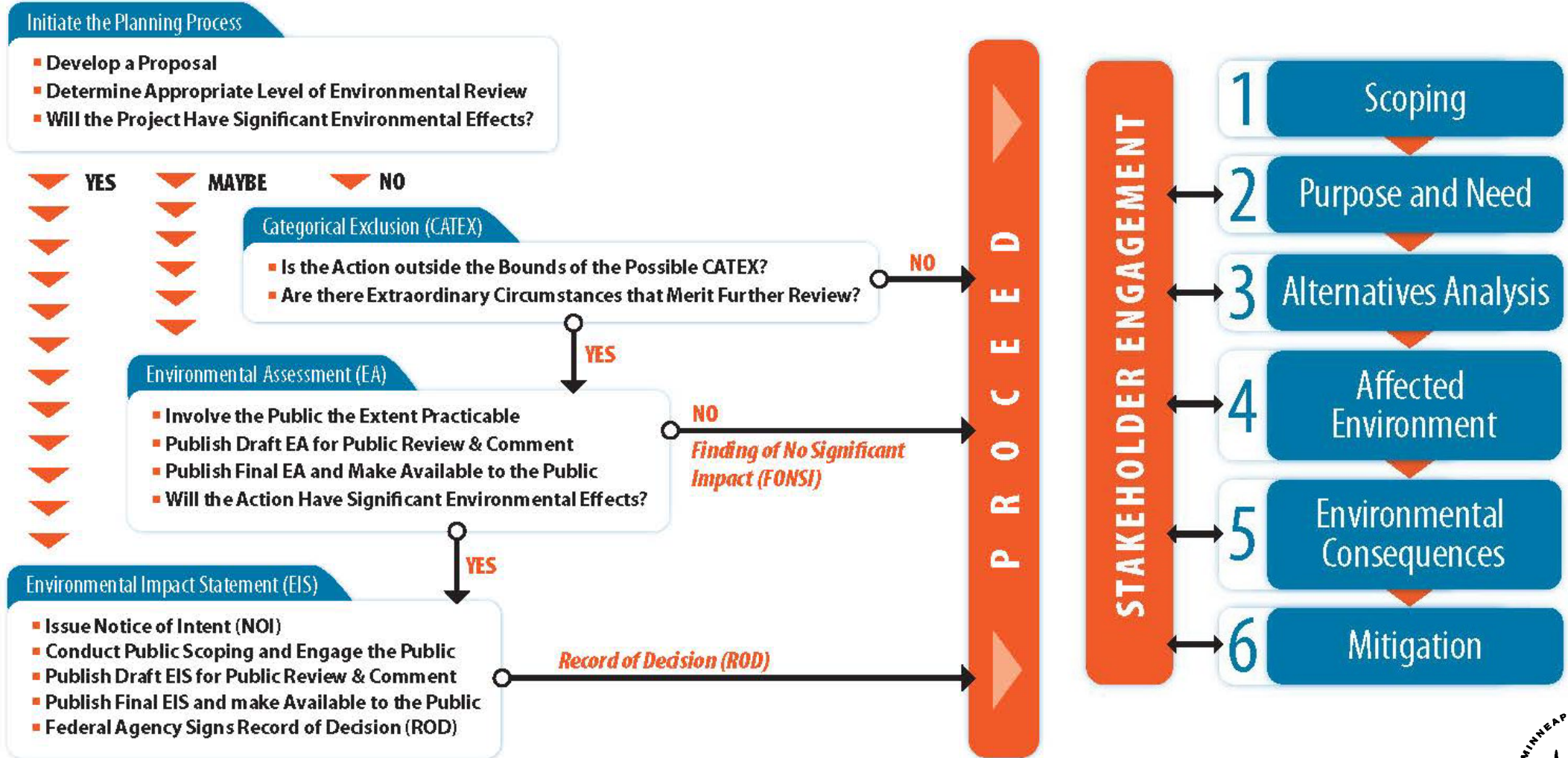
- Consultant Deputy Project Manager & Stakeholder Engagement Coordinator

# Environmental Process Overview

- Federal requirements are identified by the National Environmental Policy Act (NEPA) and associated Federal Aviation Administration (FAA) implementation guidance
- State requirements are identified by the Minnesota Environmental Policy Act (MEPA) and associated Environmental Quality Board (EQB) implementation guidance



# Federal Environmental Process



# State Environmental Process

- Extension of an existing MAC runway or taxiway requires an Environmental Assessment Worksheet (EAW)
  - Minnesota Rules 473.614
- Because a Federal EA is being completed, it can fulfill the informational requirements of a State EAW
  - MR 4410.1300 and 4410.3900
- For Airlake Airport, the MAC is both the responsible government unit (RGU) and the project proposer
  - MR 4410.0500 and 4410.4300





# Purpose and Need

- **Purpose** – to achieve planning goals outlined in the 2035 long-term comprehensive plan:
  - Better accommodate business aircraft needs by maximizing the airfield’s operational capabilities
  - Maintain or improve Runway Protection Zone (RPZ) land use compatibility
  - Mitigate existing issues with vegetative growth penetrating airspace surfaces, to the extent practical
  - Verify and potentially update the taxiway layout to reflect current industry best practices
- **Need** – to meet existing and projected airport user needs and create a safer operating environment through the following objectives (the proposed action):
  - Reconstruct the existing 4,099 feet of Runway 12-30 pavement
  - Extend Runway 12-30 to 4,850 feet
  - Minimize incompatible land uses in the Runway 12-30 RPZs
  - Resolve on-Airport tree penetrations to airspace surfaces



# Proposed Action

1. Reconstruct the existing 4,099 feet of Runway 12-30 pavement.
2. Lengthen Runway 12-30 to 4,850 feet by extending Runway 12 end approximately 271 feet and extending Runway 30 approximately 480 feet.
3. Extend Taxiways A & B to, relocate Taxiways A1 & B1 to, and construct new holding bays north and south of the new Runway 12 end.
4. Extend Taxiway A to, relocate Taxiway A5 to, and construct a new holding bay north of the new Runway 30 end.
5. Modify Taxiway A and/or A1 to allow aircraft to hold perpendicular to the runway centerline.
6. Modify Runway 30 MALSR to include new in-pavement lights and adjusted light tower heights.
7. Extend runway edge lighting and relocate airfield guidance signs.
8. Remove on-airport trees within part 77, approach, and departure surfaces.
9. Relocate 225th Street west outside the Runway 12 RPZ.
10. Relocate trout stream tributary on airport property as necessary to accommodate proposed improvements.

## **Connected Actions:**

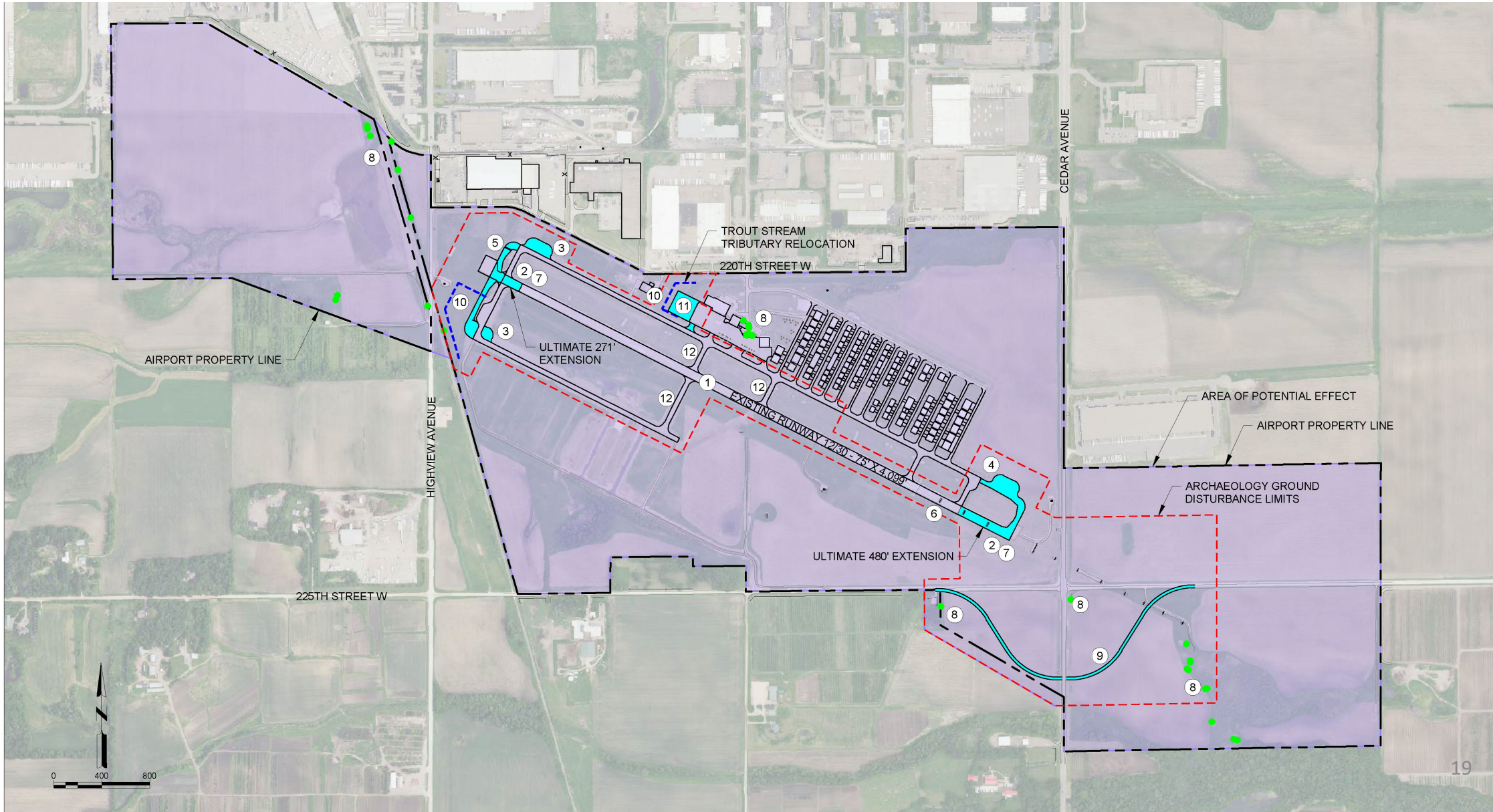
11. Expand the fixed base operator (FBO) aircraft parking apron.

## **Actions To Be Determined:**

12. Address non-standard conditions associated with Taxiways A2, A3, and B2.



# Proposed Action/Project Area



# Alternatives Analysis

- Compare and evaluate alternatives for meeting the Purpose and Need
- Alternatives developed in sufficient detail to evaluate and compare in terms of cost, operational and safety factors, and environmental issues
- Analysis will rely primarily on the LTCP, plus a no-action alternative and any refinements to the preferred alternative
- Two areas being closely studied in the EA/EAW for minor adjustments from the LTCP:
  - Exit taxiways
  - Road relocation alignment





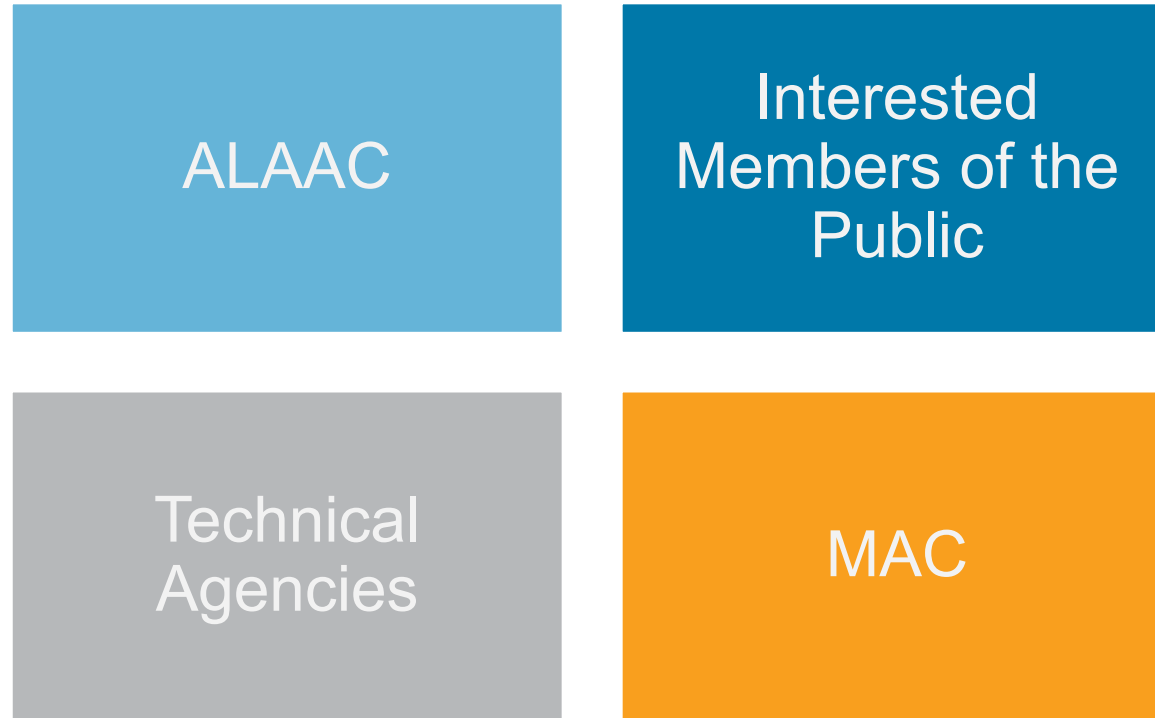
# Environmental Analysis



- Air Quality
- Biological Resources (including fish, wildlife, and plants)
- Climate
- Coastal Resources
- Department of Transportation Act, Section 4(f)
- Farmlands
- Hazardous Materials, Solid Waste, and Pollution Prevention
- Historical, Architectural, Archeological, and Cultural Resources
- Land Use
- Natural Resources and Energy Supply
- Noise and Compatible Land Use
- Socioeconomics, Environmental Justice, and Children’s Environmental Health and Safety
- Visual Effects (including light emissions)
- Water Resources (including wetlands, floodplains, surface waters, groundwater, and wild and scenic rivers)
- **Cumulative Impacts** – The NEPA process requires projects that are connected, cumulative, and similar (common timing and geography) be considered.



# Stakeholder Engagement Groups



# Stakeholder Engagement Meetings

**ALAAC**  
Up to 4 briefings throughout the project

**Public**  
Public meeting – Intro to NEPA, P&N, Alternatives (Dec)  
Public hearing 30 days after Draft EA/EAW published (Apr)  
One-on-one interested party interviews

**Technical Agencies**  
Ongoing coordination and up to 4 meetings to work through technical questions, issues, and feasibility of alternatives

**MAC**  
Up to 3 briefings during PD&E Committee or Full Commission Meetings



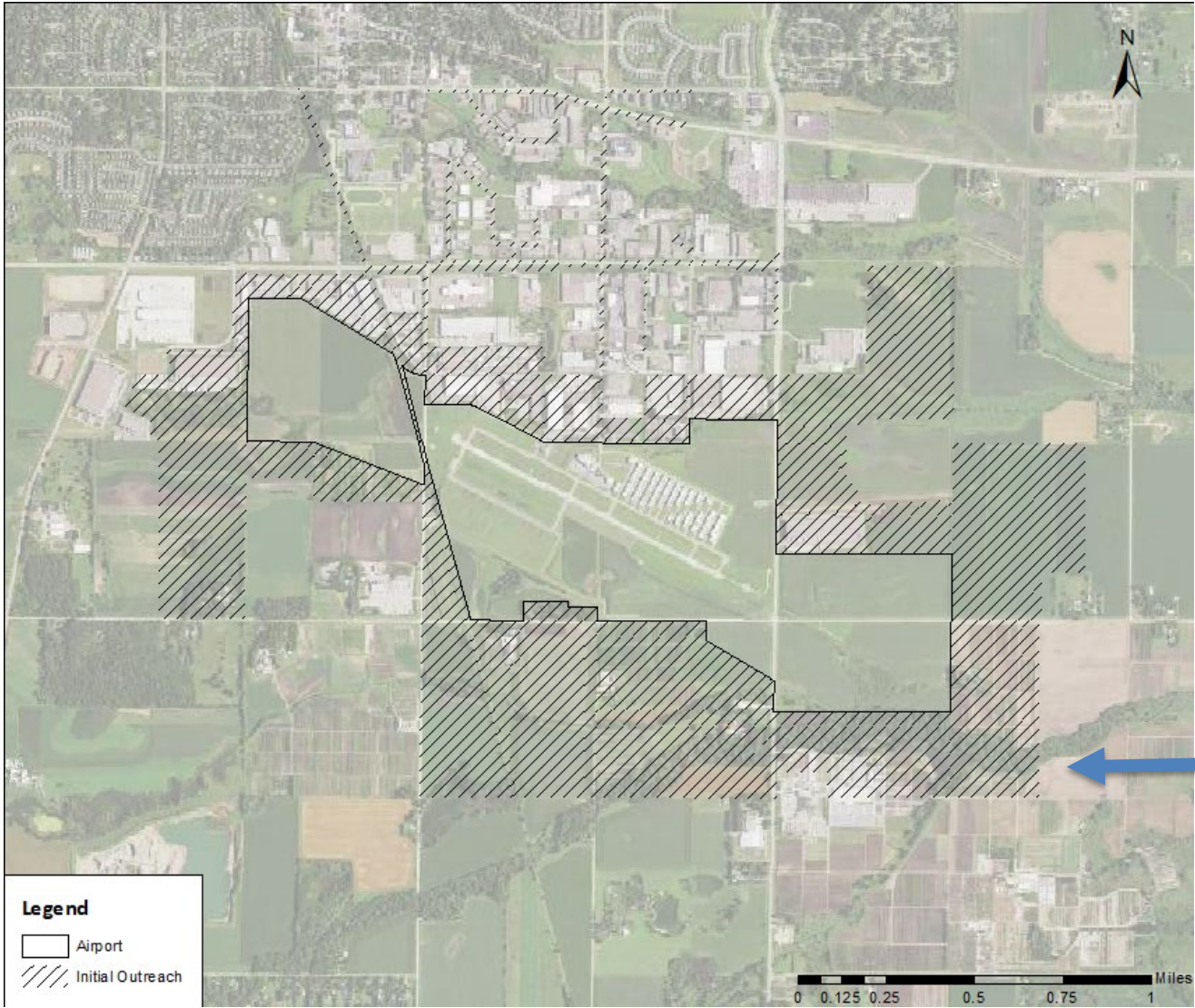
# Stakeholder Outreach Platforms

- Stakeholder meetings / In-person presentations
- Project webpages
- Monthly project updates (email)
- Public notices
- Initial project notification letter (mail)
- Draft EA/EAW review and comment period





# Initial Project Notification



# Project Schedule



# Next Steps

- Submit Purpose and Need for FAA Approval
- Complete Alternatives Analysis
- Initiate Technical Agency Coordination
- Continue Environmental Analysis





# Questions?





# Aircraft Operations & Noise Complaints Summary Q2 2022







Find an Address



8

MPH  
E

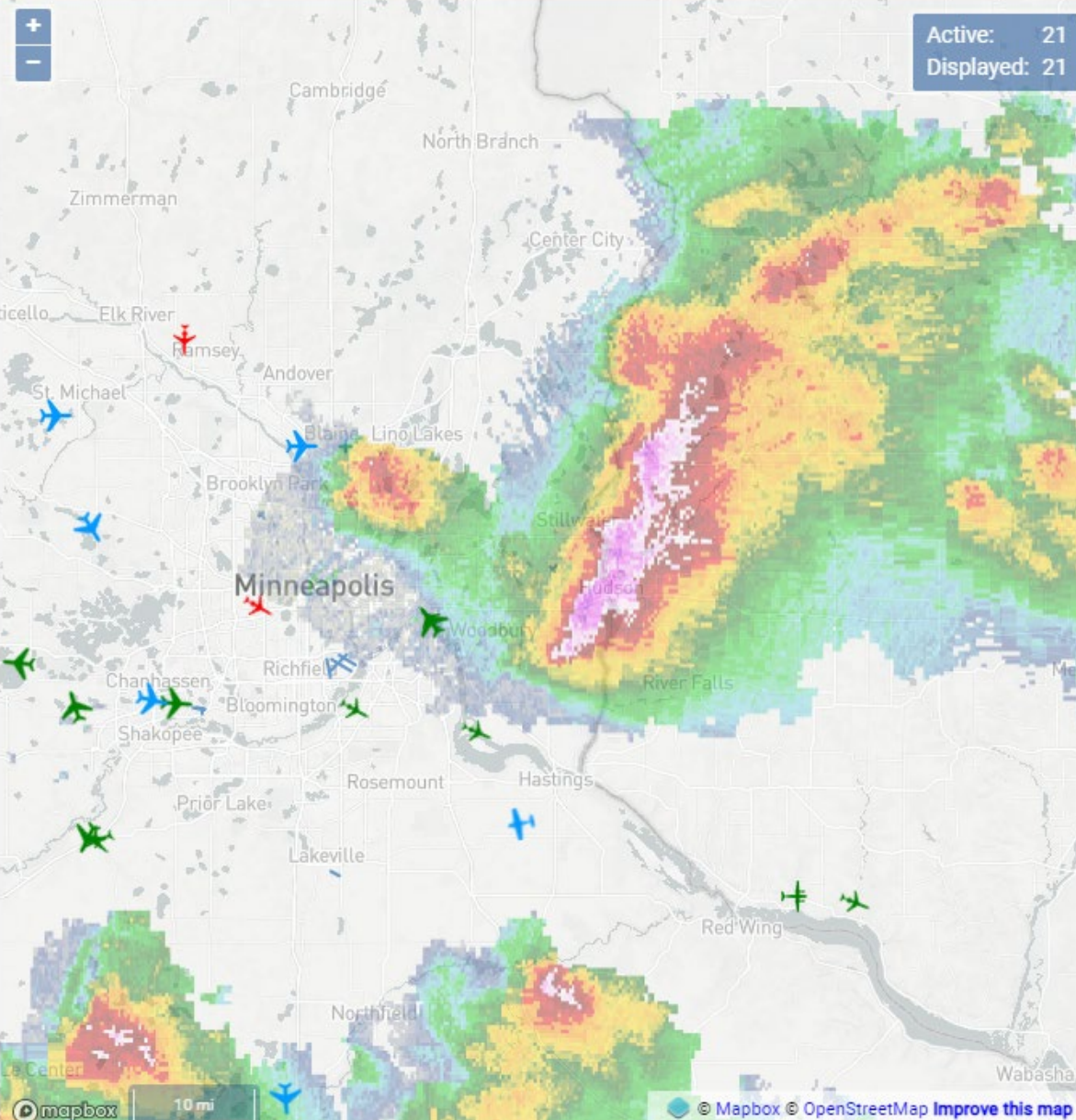
4:18:40 PM

May 19, 2022



Replay Type

Real Time (All times in CDT and delayed by 0.25 Minute)



# MAC FlightTracker: macnoms.com



# Website Resources:

[metroairports.org/community-connection](https://metroairports.org/community-connection)

The screenshot displays the website's interface. At the top left is the Metro Airports Community Connection (MAC) logo, which features a stylized 'M' with an airplane icon and the text 'METRO AIRPORTS COMMUNITY CONNECTION' and 'MAC'. To the right of the logo is a dark blue navigation bar with white text for 'NEWS', 'EVENTS', 'DOCUMENTS & RESOURCES', 'FAQS', and 'CONTACT US'. Below this bar is a white navigation menu with links for 'About Us', 'Our Airports', 'Doing Business', and 'Community Connection', which is underlined. A search bar with the text 'SEARCH' and a magnifying glass icon is located on the right side of the page. The main content area features a large photograph of an outdoor community event. In the foreground, a yellow tractor is partially visible, with a blue banner featuring the MAC logo attached to it. A group of people, including children, are gathered around a large, colorful mural. In the background, a blue tent with the MAC logo and the slogan 'Our Vision: Delivering your best airport experience' is set up. The bottom of the page has a white footer with the text 'QUICK LINKS:' followed by links for 'Aircraft Noise', 'Economic Impact', 'Public Safety', and 'Public Records Requests'.

NEWS EVENTS DOCUMENTS & RESOURCES FAQS CONTACT US

About Us Our Airports Doing Business Community Connection SEARCH

Community Connection

Our Vision: Delivering your best airport experience

QUICK LINKS: [Aircraft Noise](#) [Economic Impact](#) [Public Safety](#) [Public Records Requests](#)

# Interactive Reports:

[metroairports.org/community-connection/aircraft-noise](https://metroairports.org/community-connection/aircraft-noise)

Home

STP

FCM

ANE

MIC

LVN

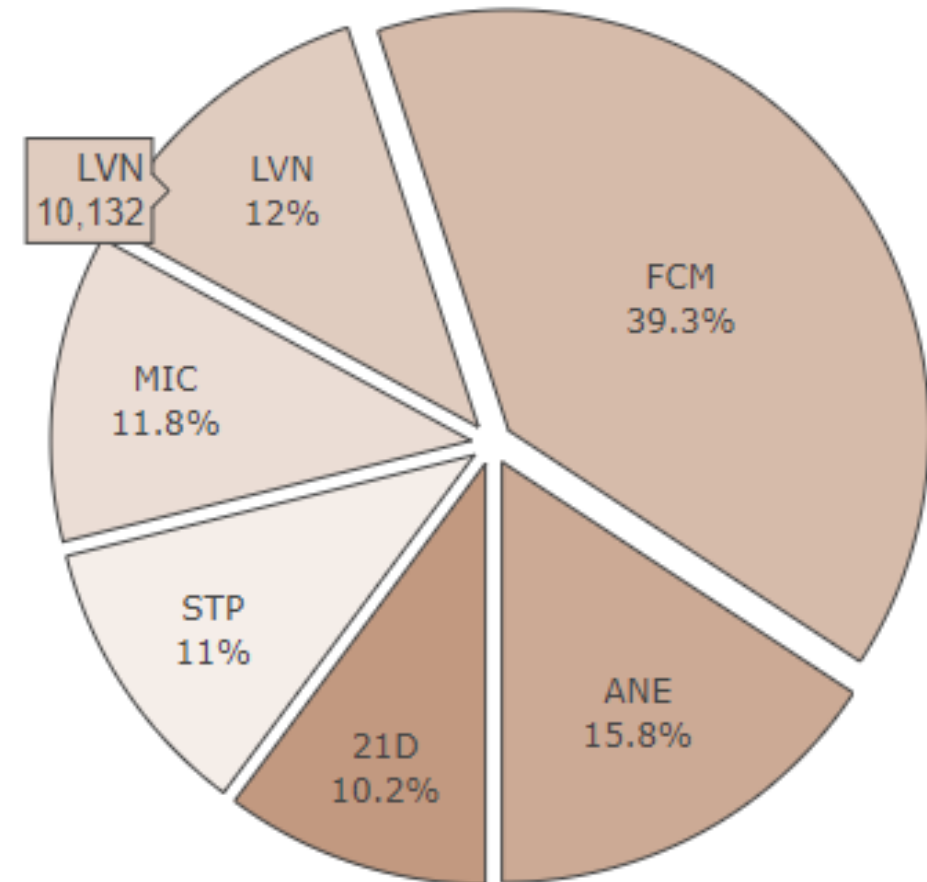
21D

## MAC Reliever Interactive Reports



# Airlake Airport (LVN) Aircraft Operations Q2 2022

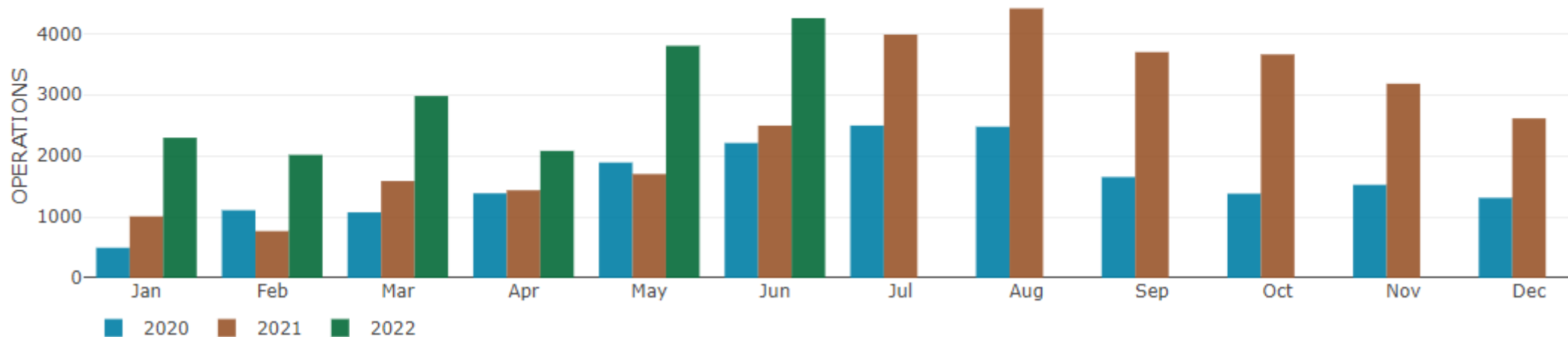
- ✓ Flight tracking data (MACNOMS) are used to determine the number of takeoffs and landings at LVN.
- ✓ A change in data processing effective July 1, 2021 now reflects more takeoffs and landings at LVN associated with training flights.





# Airlake Airport (LVN) Aircraft Operations Q2 2022

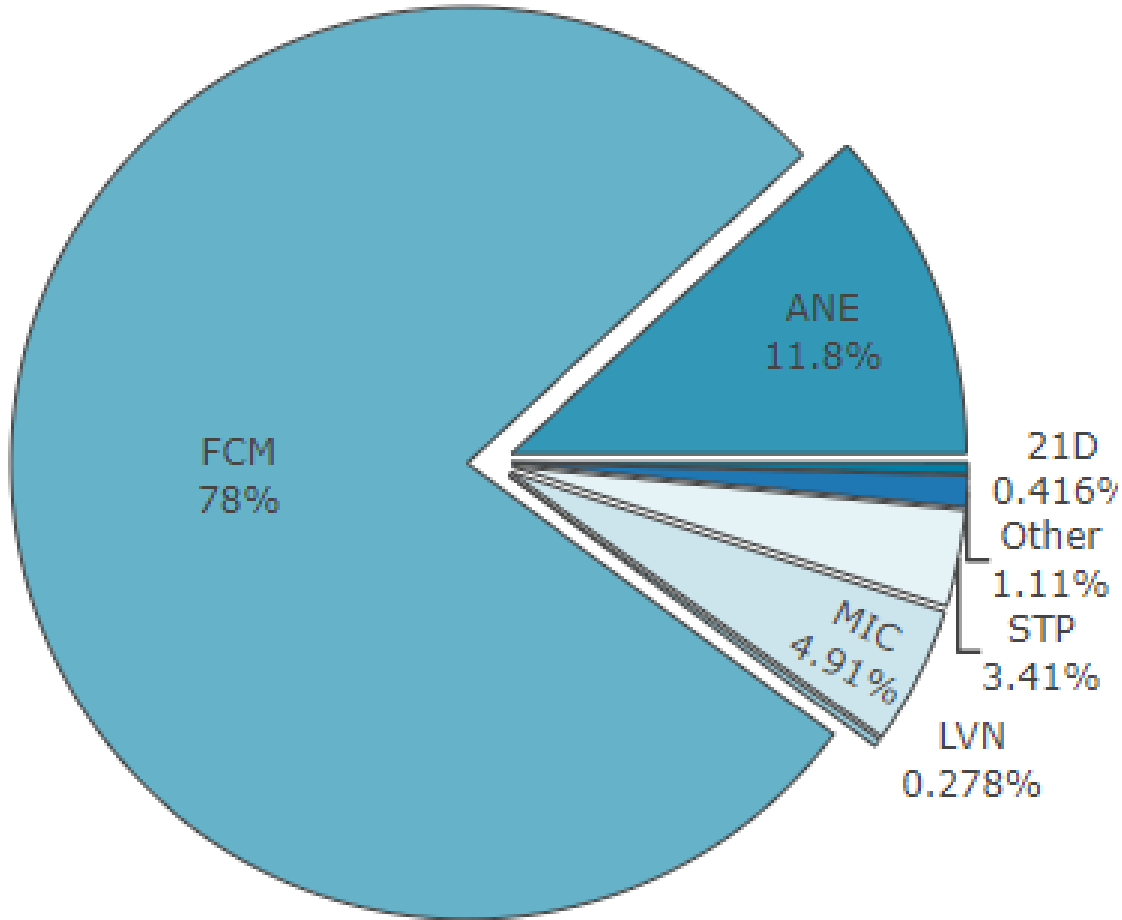
2022		2021	
<b>10132</b> OPERATIONS	<b>271</b> NIGHTTIME OPERATIONS	<b>5631</b> OPERATIONS	<b>163</b> NIGHTTIME OPERATIONS



**Data Processing Adjustment Began**

Beginning on July 1, 2021, the MACNOMS methodology for counting operations was updated to more accurately reflect total aircraft departures and arrivals at MAC airports.

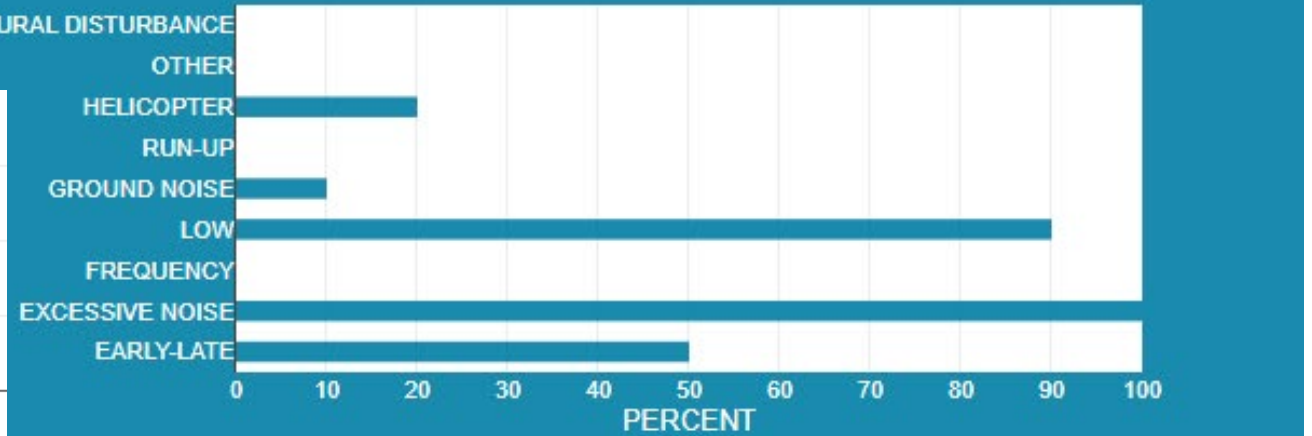
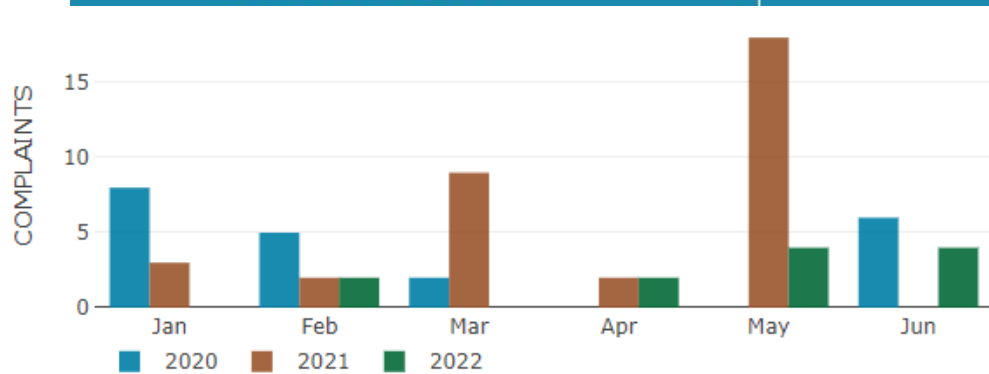
# Airlake Airport (LVN) Noise Complaints Q2 2022



- ✓ Complaints are received through a 24-hour hotline, website account, email, and in-person.
- ✓ Complaints are correlated to specific flight activity based on details provided by the customer.
- ✓ Responses to complaints are as requested.
- ✓ Details are used for analysis.

# Airlake Airport (LVN) Noise Complaints Q2 2022

<b>2022</b>	<b>10</b> COMPLAINTS	<b>3</b> LOCATIONS	<b>3</b> NIGHTTIME COMPLAINTS	<b>2</b> NIGHTTIME HOUSEHOLDS
<b>2021</b>	<b>20</b> COMPLAINTS	<b>3</b> LOCATIONS	<b>3</b> NIGHTTIME COMPLAINTS	<b>1</b> NIGHTTIME HOUSEHOLDS







EAA  
Young  
Eagles  
[yeday.org](http://yeday.org)

## Purpose and Background of the Young Eagles Program

- The **Young Eagles** is a program created by the [Experimental Aircraft Association](#) (EAA) designed to give children between the ages of 8 to 17 an opportunity to experience flight in a general aviation airplane while educating them about aviation.
- The program is offered free of charge with costs covered by the volunteers.
- The program was launched in 1992
- The initial goal of the program was to fly one million children prior to the 100th anniversary of flight celebration (Dec. 17, 2003).
- Currently 2,273,941 Young Eagle flights have been flown

# Young Eagle Pilot and Aircraft Requirements

- Pilot Minimum Requirements
  - Minimum of 250 flight hours of experience
  - EAA member
  - Successfully completed Child Protection training and a background check
  - Abide by the Child Protection requirements
- Aircraft Minimum Requirements
  - Airworthy inspections current
- Flights include only normal procedures, i.e. no aerobatics





# Young Eagles Day Registration Website

Home Page - You can also use <http://yeday.org>.

 Videos

 Contact Us

 Site Info.

 Sign Up

Young Eagles Online Registration – Register for a Young Eagles flight rally, Young Eagles Workshop, Young Eagles Build and Fly, or other aviation youth events at a chapter near you! [More Information.](#)

To create an event, be a Pilot or Volunteer for a Youth Event, please "[Sign Up](#)" and "[Login](#)". Please watch the "[Videos](#)" for details.



We have selected the 3 closest Youth events for your location of **Minneapolis, Minnesota**.

If this is not your location, please enter your 5 digit ZIP or 6 digit postal (Canada) code:



Please click on the logos below to view detailed information. - Select Event Type: [All Event Types](#)

[see more](#)

September 10 (Saturday)

 Anoka County-Blaine (Janes Fld) AP (18 m.)




61  
Registered

**YE Rally at Atlantic Aviation, Blaine, MN**

EAA Chapter 237 (Flown 7,998 kids locally)

[REGISTER FOR EVENT](#)

September 10 (Saturday)

 Lake Elmo Airport (19 miles)




43  
Registered

**Young Eagles Rally/Flights - Lake Elmo MN**

EAA Chapter 54 (Flown 4,825 kids locally)

[REGISTER FOR WAITLIST](#)

September 10 (Saturday)

 Buffalo Municipal Airport (38 miles)




29  
Registered

**Wright County September 10th Young Eagles**

EAA Chapter 878 (Flown 1,758 kids locally)

[REGISTER FOR EVENT](#)

September 24 (Saturday)

 Forest Lake Airport (27 miles)




35  
Registered

**Young Eales Rally at Forest Lake**

EAA Chapter 1638

[REGISTRATION CLOSED](#)

September 17 (Saturday)

 St Cloud Regional Airport (82 miles)




22  
Registered

**Young Eagles Rally, St Cloud, MN**

EAA Chapter 551 (Flown 3,897 kids locally)

[REGISTER FOR EVENT](#)

September 24 (Saturday)

 Rochester Intl AP (75 miles)



6  
Registered

**YE Rally Rochester MN**

EAA Chapter 100 (Flown 1,708 kids locally)

[REGISTER FOR EVENT](#)

# Registration

- Must be completed by a parent or legal guardian
- Time slot chosen for the flight

## Flight Details

- Flights usually last 20 to 30 minutes
- Questions will be answered as time permits
- Cameras are allowed



## After the Flight

- Remaining questions answered
- Photos with the aircraft (and pilot if desired) welcomed
- Other take-aways:
  - Certificate for completing the flight
  - Logbook listing flight details
  - Free EAA Student Membership and Sporty's on-line Learn to Fly Course
  - Free EAA AeroEducate Account
- Other information including possible scholarships and registration information is available at [EAA25.org](http://EAA25.org) (Lakeville's EAA chapter)

# South St. Paul Airport Runway Closure Effects







# ALAAC Member Comments & Announcements



**Next ALAAC  
Meeting Date:  
December 8, 2022  
at 4 p.m.**

**Location to be  
determined**

<b>December 2022</b>						
<b>MO</b>	<b>TU</b>	<b>WE</b>	<b>TH</b>	<b>FR</b>	<b>SA</b>	<b>SU</b>
			1	2	3	4
5	6	7	8	9	10	11
12	13	14	15	16	17	18
19	20	21	22	23	24	25
26	27	28	29	30	31	1





**Thank you!**