

DISCOVER

Flying Cloud Airport

2040 Long-Term Plan Update

June 8, 2022





Agenda

- Welcoming Remarks
- Introductions
- Stakeholder Engagement Program
- LTP Process
 - Long Term Plan (LTP) Goals & Objectives
- LTP Project Updates
 - Existing Conditions
 - Aviation Forecast Methodology
- Next Steps
- Feedback / Survey



DISCOVER

Flying Cloud Airport

Introductions





Metropolitan Airports Commission

Eric Gilles



- MAC Airport Planner
- Project Manager

Joe Harris



Director, Reliever
Airports

Blaine Peterson



Flying Cloud
Airport Manager

Brad Juffer



Manager,
Community
Relations



HNTB

Andrew Blaisdell



- Senior Project Manager,
- Project Manager

Greg Albjerg



Vice President,
Senior Aviation Consultant

Alex Normandin



Senior Aviation Planner



DISCOVER

Flying Cloud Airport

Stakeholder Engagement Program





Stakeholder Engagement Program

- Fulfill the MAC's legislative purpose:
 - Promote air navigation in and through the State
 - Promote the efficient, safe and economical handling of air commerce.
 - Assure minimum environmental impact from air navigation.
- Conduct responsible and transparent planning
- Support a thorough public involvement process

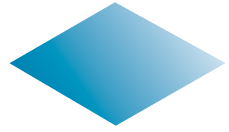




Stakeholder Engagement Program



- Stakeholder Advisory Panel
- Discover Flying Cloud Events
- Project Website
- metroairports.org/fcm-long-term-plan
- E-News Project Updates
- Updates to MAC's PD&E Committee
- Email Contact
- fcm.ltp@mspmact.org



Stakeholder Advisory Panel (SAP)

Airport
Tenants

Local
Communities

Regional
Businesses

Tourism
Associations

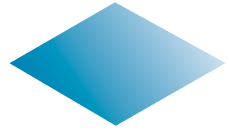


DISCOVER

Flying Cloud Airport

Long-Term Plan Process





What is a Long-Term Plan (LTP)

- A planning document that records current and future needs of an airport
- Focuses on a 20-year horizon, with intermediate steps at 5- and 10-years
- FAA typically requires updates every 7-10 years (for all airports nationwide)
- The last LTP update for FCM was completed in 2010
- As the airport and surrounding region see growth, this process allows us to plan for the future and make smart capital investments and improvements.
- Does not authorize actual construction



Goals & Objectives



Enhance airport safety



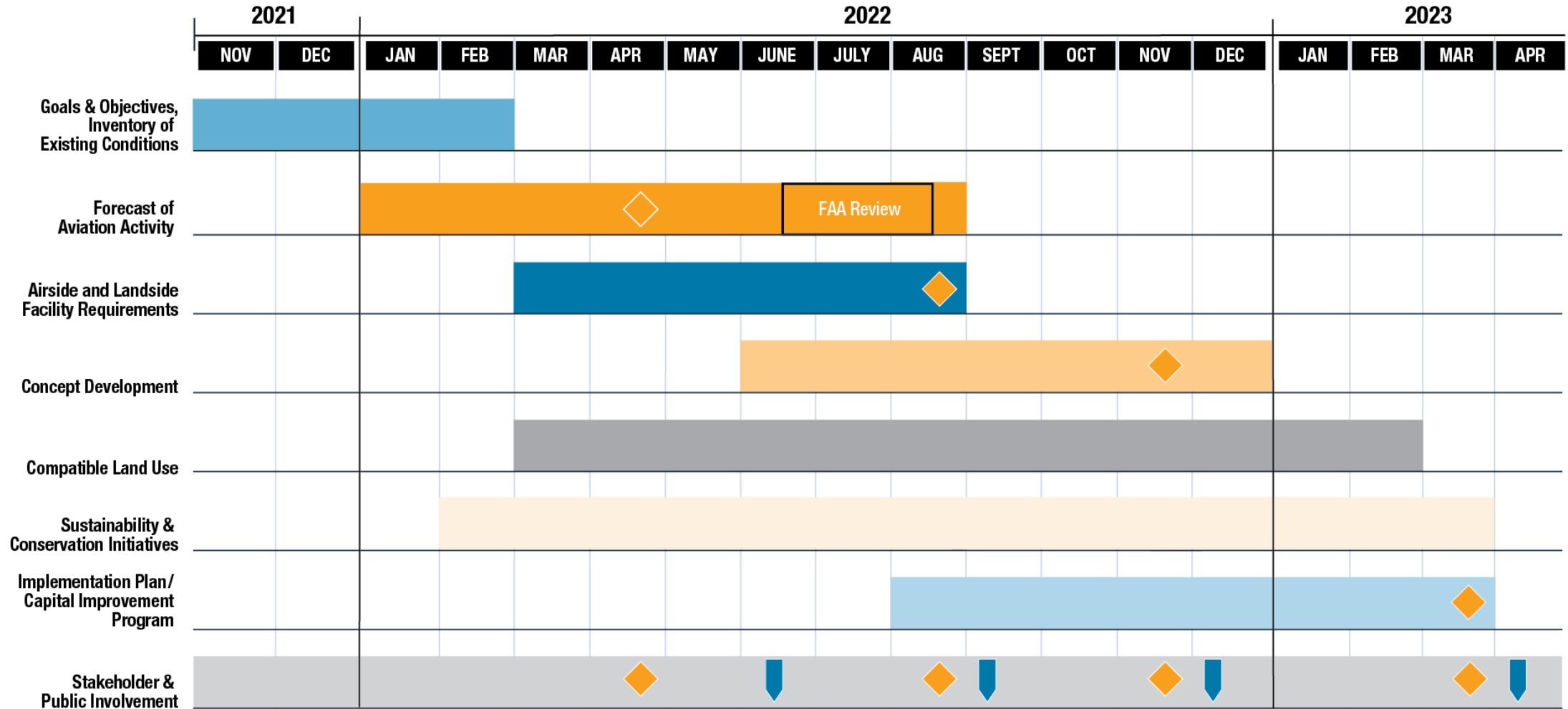
Preserve and, if possible, improve operational capabilities for the current family of aircraft using the airport



Promote financial sustainability of the MAC Reliever Airport system by exploring revenue opportunities for aeronautical and non-aeronautical development



Metropolitan Airports Commission (MAC) Flying Cloud Airport (FCM) 2040 Long-Term Plan (LTP) Schedule





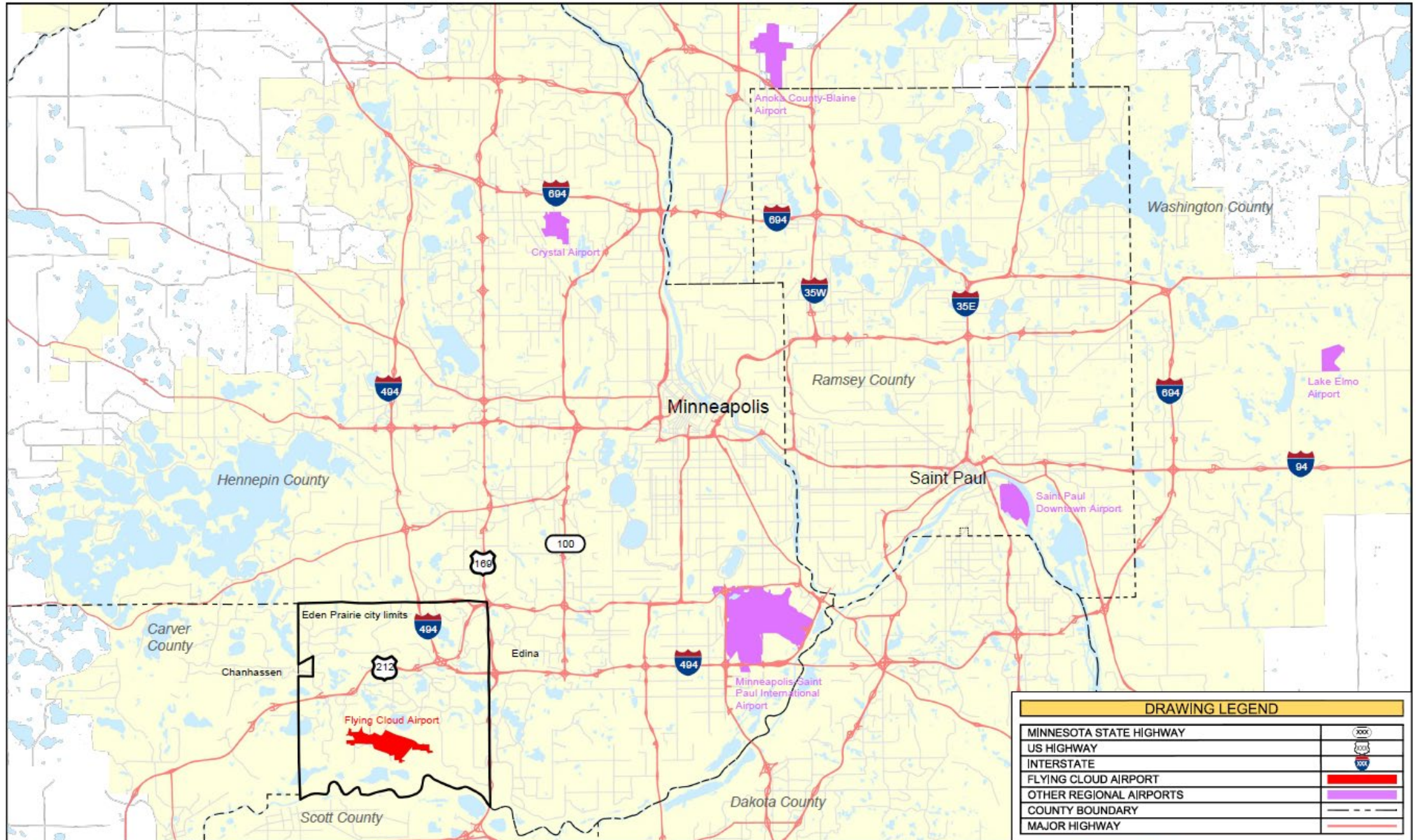
DISCOVER

Flying Cloud Airport

Long-Term Plan Updates

Existing Conditions





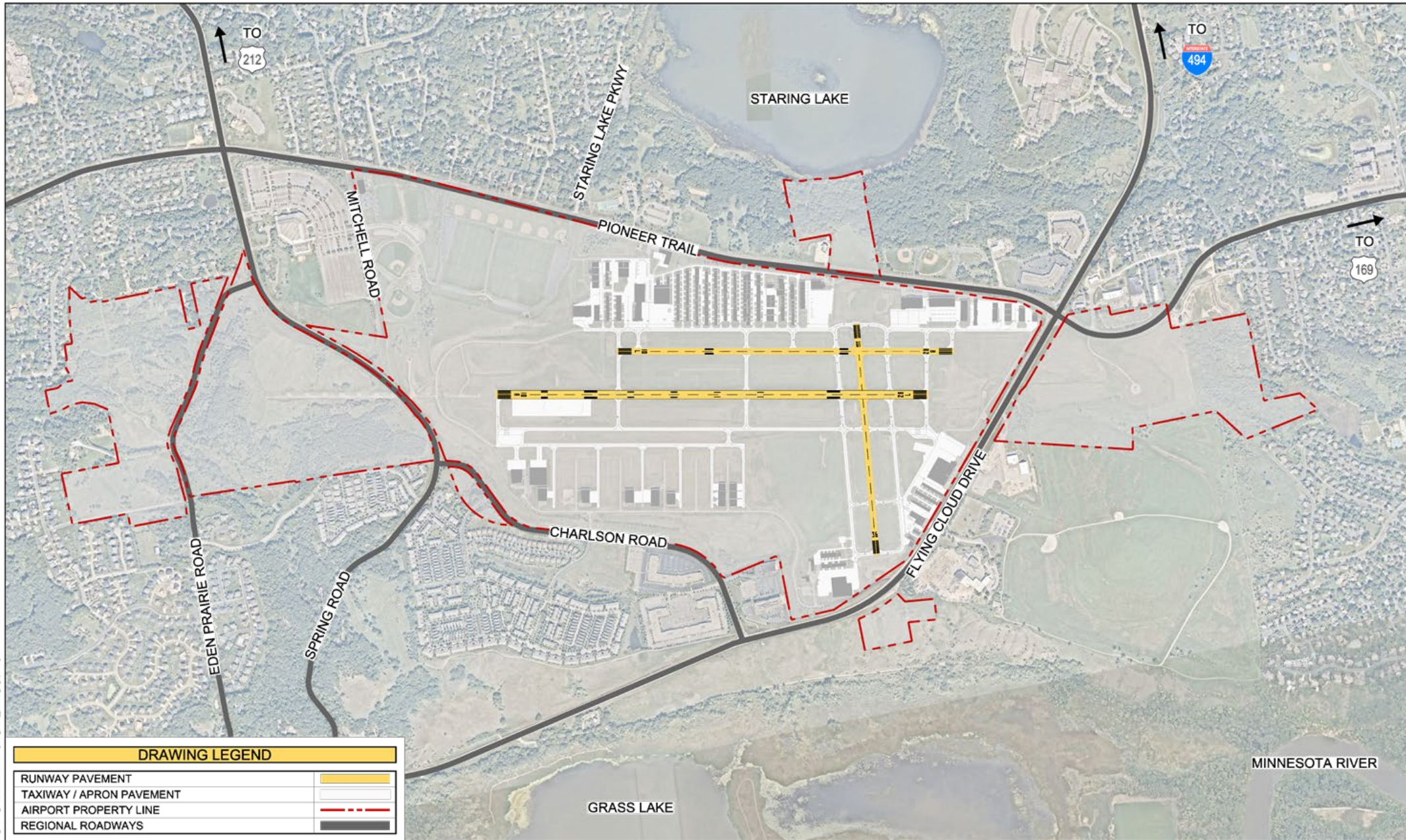
DRAWING LEGEND	
MINNESOTA STATE HIGHWAY	
US HIGHWAY	
INTERSTATE	
FLYING CLOUD AIRPORT	
OTHER REGIONAL AIRPORTS	
COUNTY BOUNDARY	
MAJOR HIGHWAY	



FLYING CLOUD AIRPORT
2040 LONG-TERM PLAN (LTP) UPDATE



FIGURE 1-1
VICINITY MAP
MAY 2022



R:\18180_MAC_Documents\2024\FCM\11\11020_04020\airfield\04020\18180_Figure 1-9_Regional Roadways for Airport.dwg 04/02/2024 11:08

DRAWING LEGEND	
RUNWAY PAVEMENT	
TAXIWAY / APRON PAVEMENT	
AIRPORT PROPERTY LINE	
REGIONAL ROADWAYS	



FLYING CLOUD AIRPORT
 2040 LONG TERM PLAN (LTP) UPDATE

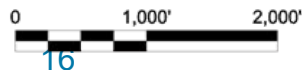


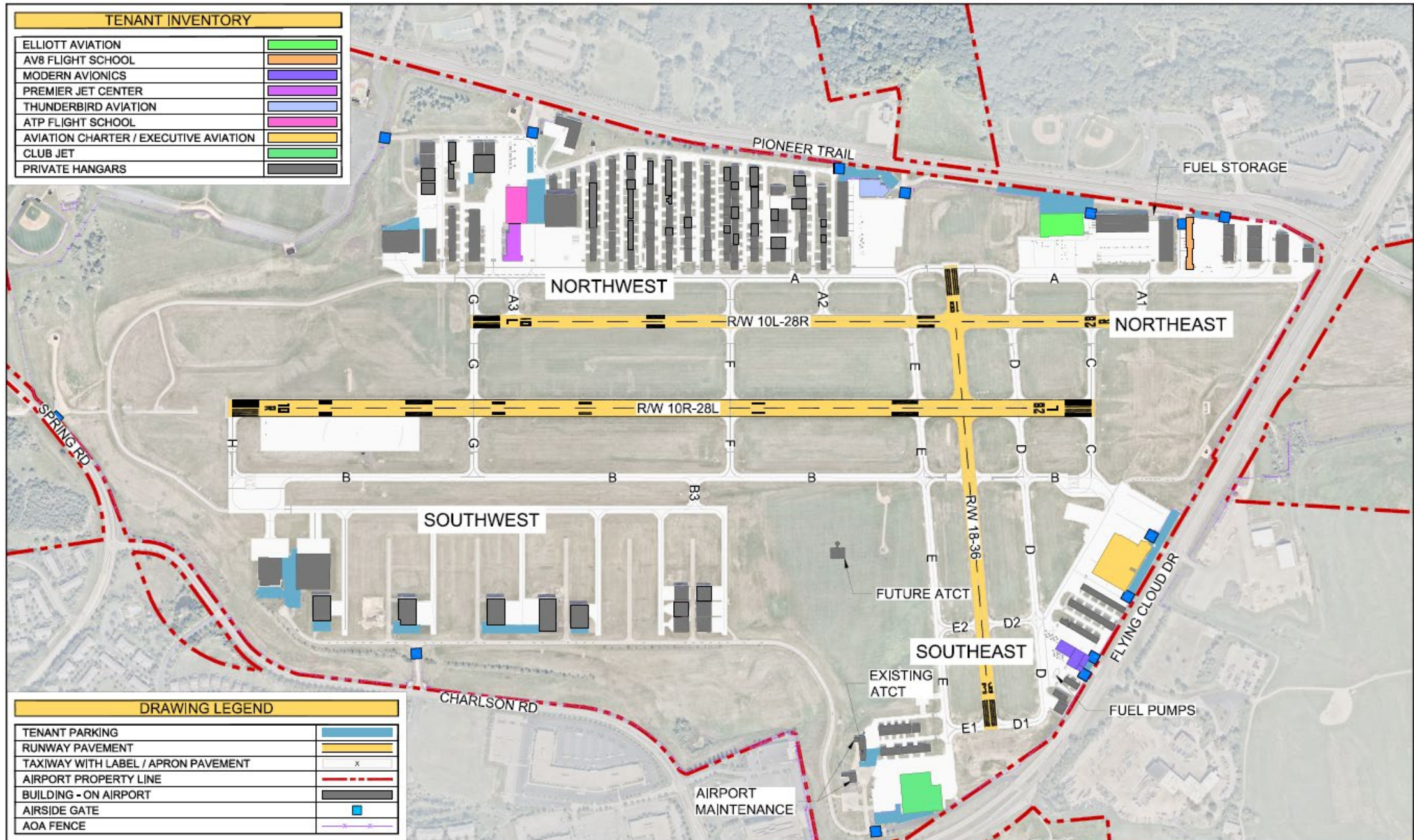
FIGURE 1-9

APR. 2022

REGIONAL ROADWAY CONNECTIONS

DRAFT WORKING DOCUMENT | NOT FOR DISSEMINATION

TENANT INVENTORY	
ELLIOTT AVIATION	
AV8 FLIGHT SCHOOL	
MODERN AVIONICS	
PREMIER JET CENTER	
THUNDERBIRD AVIATION	
ATP FLIGHT SCHOOL	
AVIATION CHARTER / EXECUTIVE AVIATION	
CLUB JET	
PRIVATE HANGARS	



DRAWING LEGEND	
TENANT PARKING	
RUNWAY PAVEMENT	
TAXIWAY WITH LABEL / APRON PAVEMENT	
AIRPORT PROPERTY LINE	
BUILDING - ON AIRPORT	
AIRSIDE GATE	
AOA FENCE	



FLYING CLOUD AIRPORT
2040 LONG-TERM PLAN (LTP) UPDATE



FIGURE 1-9
TENANT AND SUPPORT FACILITIES
INVENTORY

MAY 2022



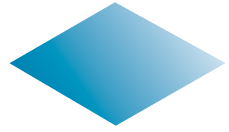
DISCOVER

Flying Cloud Airport

Long-Term Plan Updates

Forecast Methodology





Forecast Overview and Purpose



- The purpose of a forecast is to establish a framework to discuss future demand
 - Airport capacity
 - Airport efficiency
 - Airport safety
- Forecast Components
 - Annual aircraft operations
 - Fleet mix
 - Based aircraft



Forecast

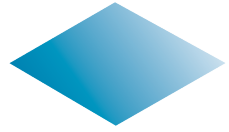
- Comparison to FAA's Terminal Area Forecast is required
- Forecast used as basis for future Plan requirements, alternatives and preferred development plan
- FAA approves subsequent Airport Layout Plan (ALP)
- ALP depicts preferred development plan





Forecast Framework

- 2021 base year with future planning activity levels
 - 2025, 2030, 2040
- Consider activity growth during COVID pandemic
- Flying Cloud Airport has the smallest catchment area of MAC's primary reliever airports
 - Population, households, employment
- Flying Cloud Airport accounts for the highest number of itinerant general aviation and business traffic per capita of the MAC's primary reliever airports



Forecast Inputs and Airport Characteristics

Key Inputs

- Historical aviation activity at FCM (operations, fleet mix, based aircraft)
- Industry factors (national GA forecast, fuel prices, aircraft production, etc.)
- Activity and constraints at other airports in region
- Business jet behavior, recent activity, and anticipated fleet
- Regional economic and population demographic data

Factors that significantly impact an airport's ability to attract business jet operations

- Adequate runway length
- Available airfield capacity/limited congestion
- Proximity to the central business district



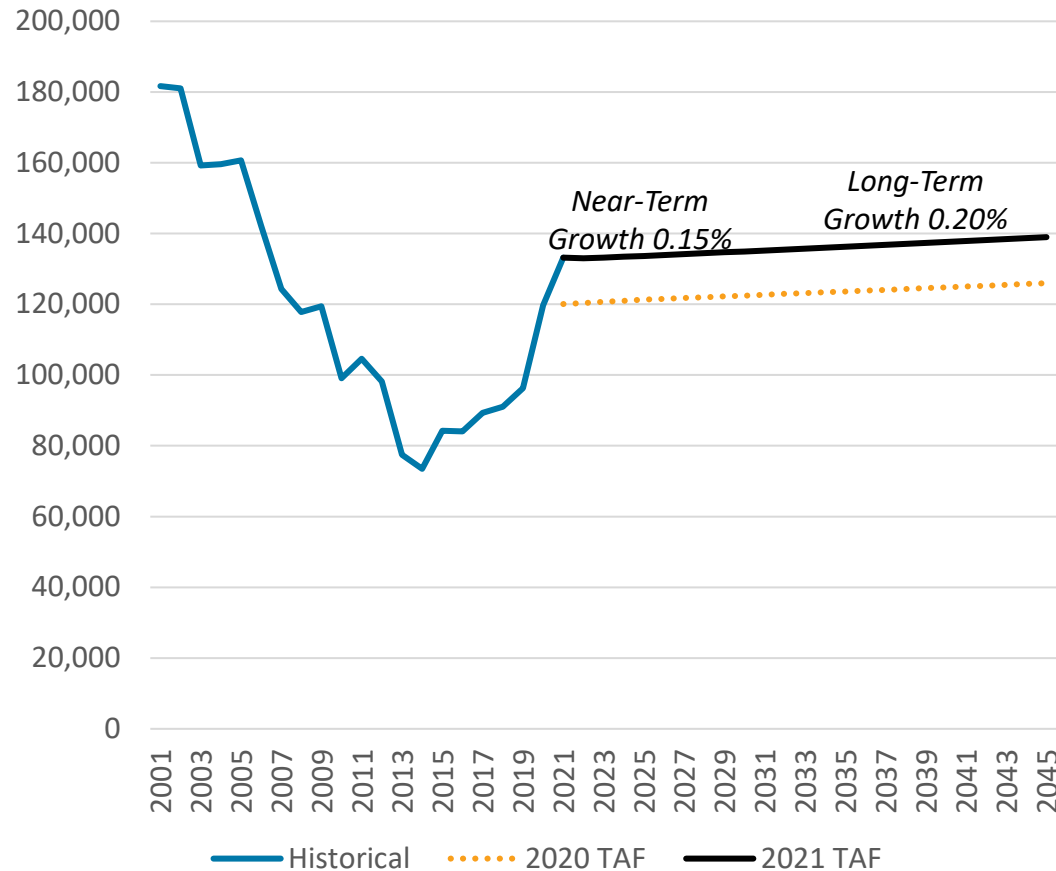
Leveraging Past Studies

- Last Long-Term Plan for Flying Cloud finished in 2010
- MAC regularly updates long-term plans for MSP and other reliever airports
 - Anoka County-Blaine (ANE)
 - St. Paul Downtown (STP)
 - Crystal (MIC)
 - Lake Elmo (21D)
 - Air Lake (LVN)





Forecast Terminal Area Forecast (TAF)



- FAA published the 2021 TAF in March 2022 to serve as guidance for annual operations and based aircraft at all airports in the national system
- The LTP team will review, validate, or propose modifications to the FAA TAF
- High-growth and low-growth scenarios will also be prepared

The level of operations expected through 2040 is less than early 2000s



DISCOVER

Flying Cloud Airport

Next Steps





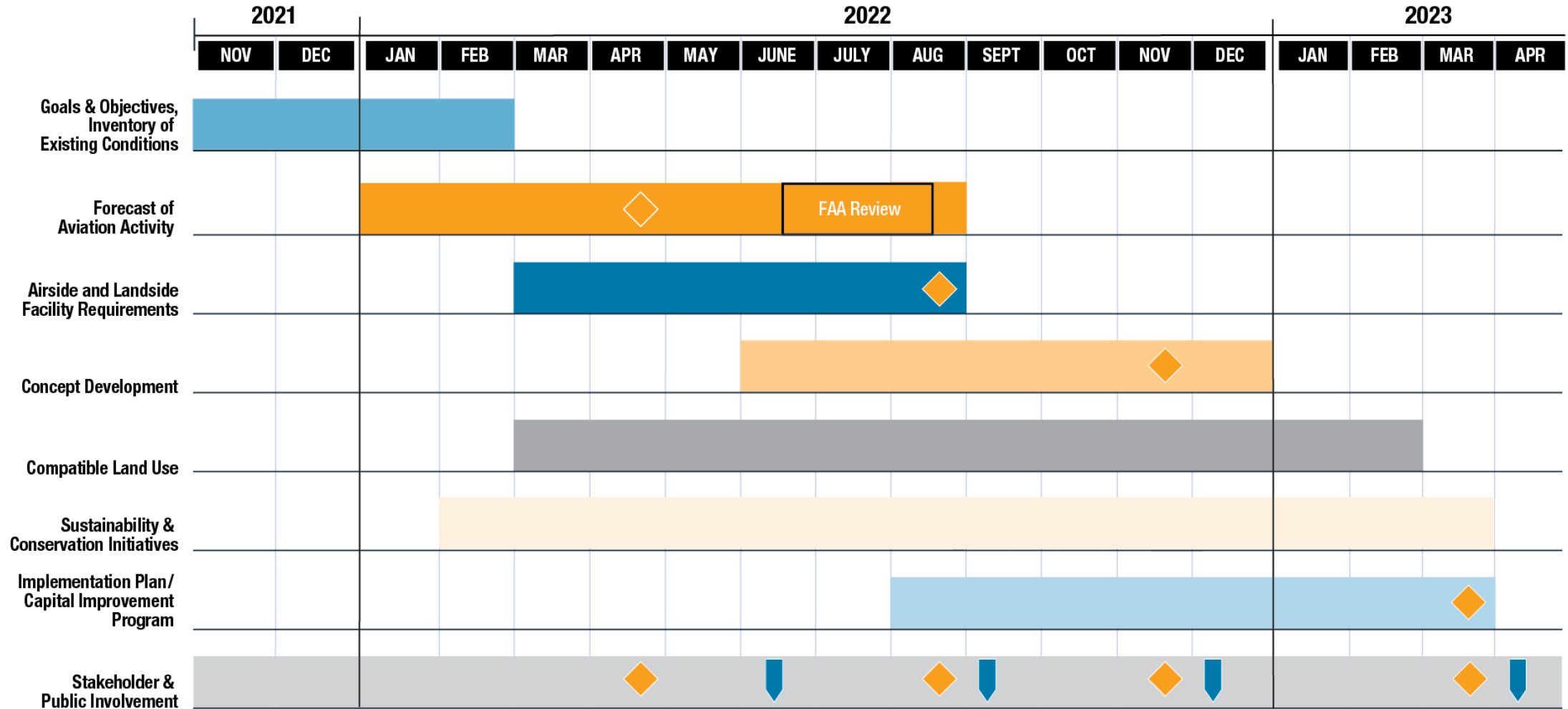
Next Steps

- Complete aviation activity forecast with input from stakeholders
- Coordinate forecast with FAA
- Next Discover Flying Cloud event in early Fall 2022





Metropolitan Airports Commission (MAC) Flying Cloud Airport (FCM) 2040 Long-Term Plan (LTP) Schedule



DISCOVER

Flying Cloud Airport



Questions?



Please complete our survey



DISCOVER

Flying Cloud Airport



Thank you for attending



Please complete our survey

