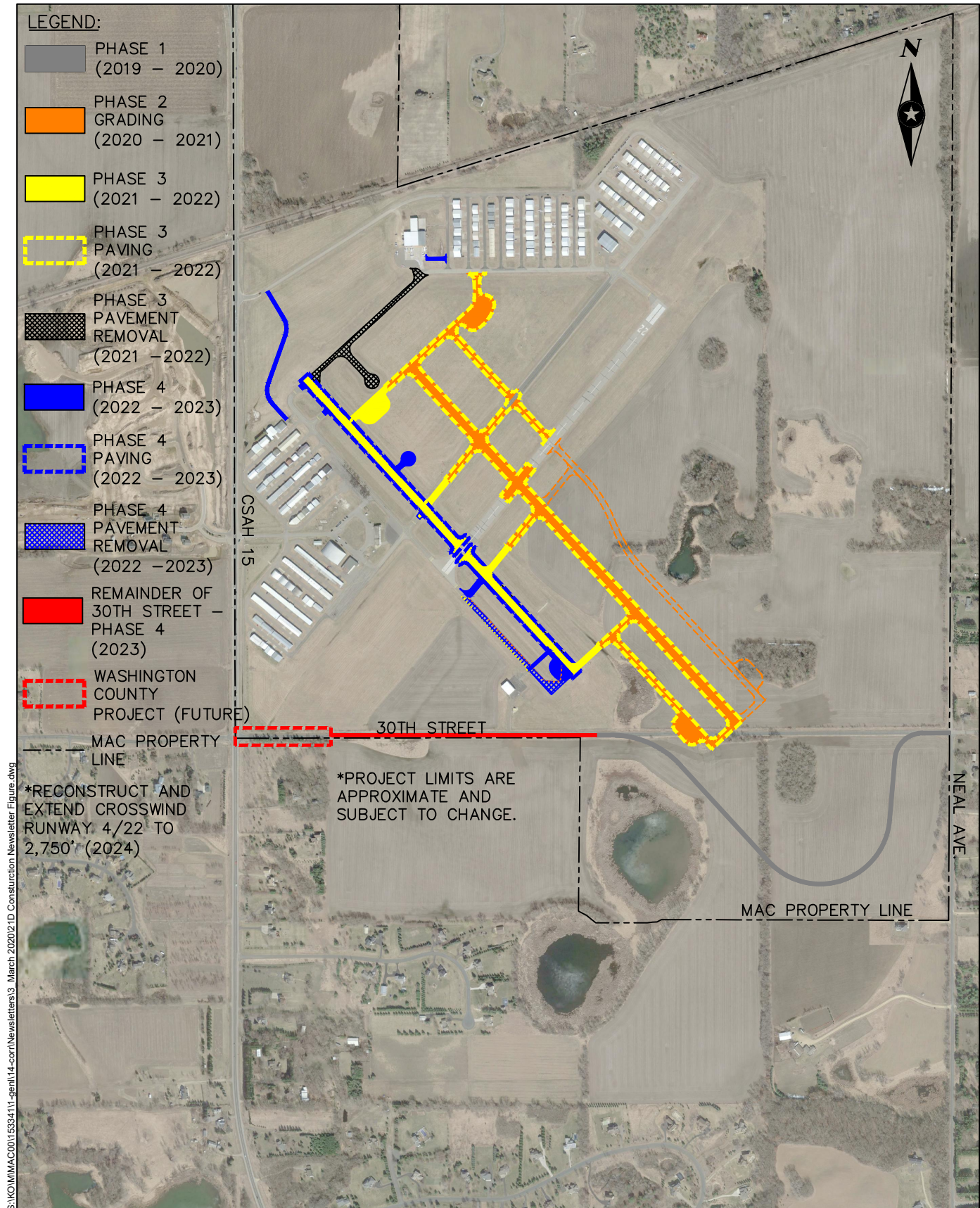




RUNWAY 14-32 REPLACEMENT

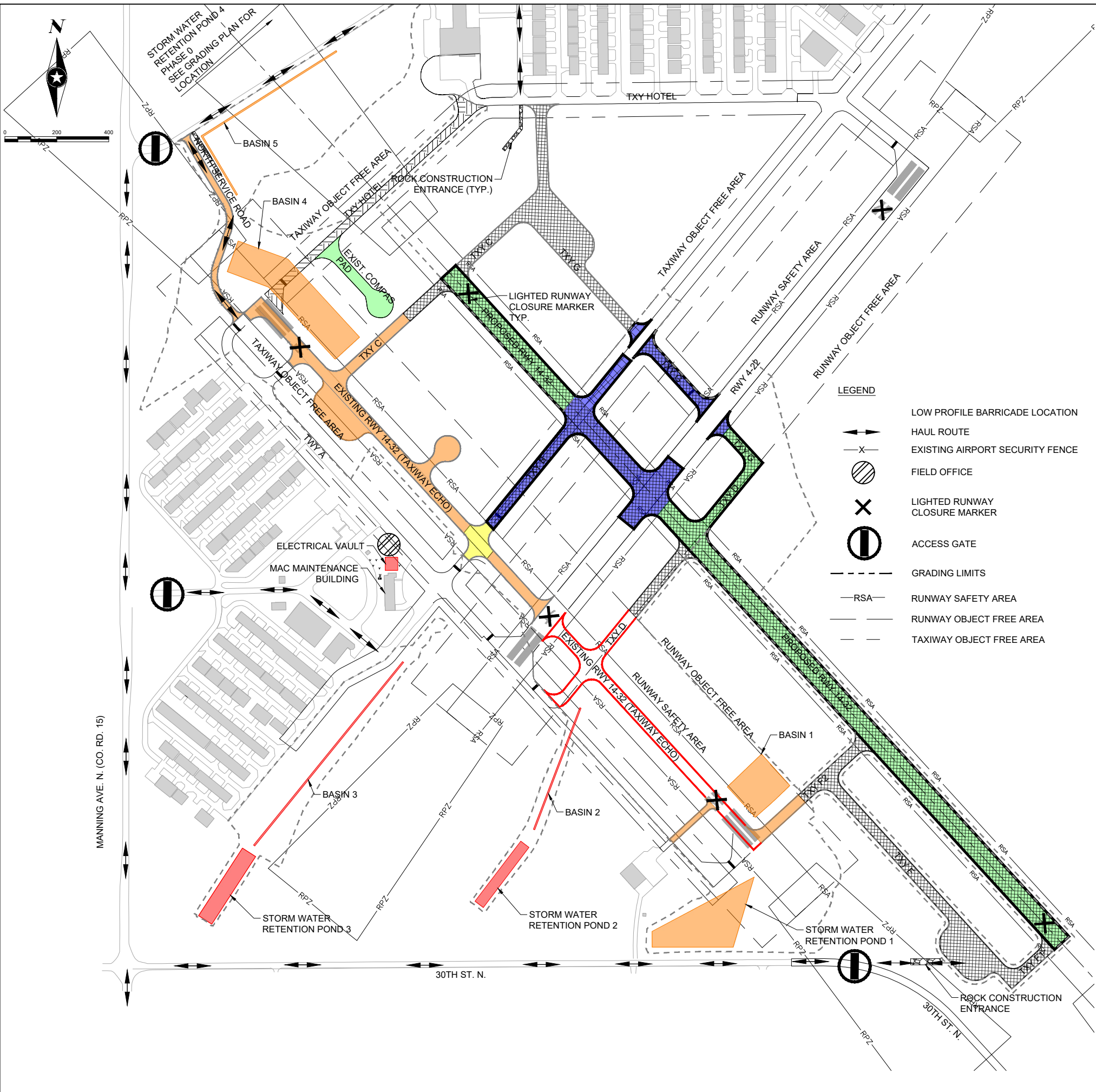
LAKE ELMO AIRPORT
LAKE ELMO, MN

DECEMBER 2020



S:\K0\MMAC\0015354111_gentl14_corr\Newsletters\3_March_2020\21D_Construction_Newsletter_Figure.dwg

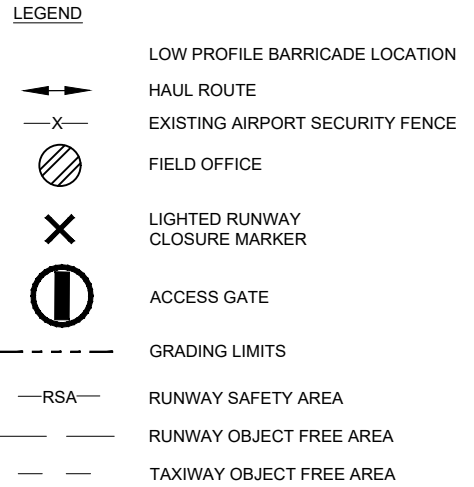
S:\K01\MAC001\4853315-final-dsgn\51-drawings\65-Aviation\Phase 3 - Runway 14-32 Replacement\PlanSheets\21D_Phase 3_Phasings.dwg 3/17/2021 8:05 AM j.jorgensen



- WORK ITEMS:**
- PHASE 0:**
 - WORK ASSOCIATED WITH PHASE 0 MAY COMMENCE AT ANY TIME UPON RECEIPT OF NOTICE TO PROCEED AND APPROVAL OF OWNER
 - ELECTRICAL VAULT - MUST BE COMPLETE PRIOR TO START OF PHASE 3
 - BASIN 2 AND 3 CONSTRUCTION
 - STORMWATER RETENTION PONDS 2, 3 AND 4
 - PHASE 1:**
 - PROPOSED RUNWAY 14-32:
 - ALL ASSOCIATED ELECTRICAL
 - TAXIWAY DELTA AND GOLF:
 - GRADING, TYPICAL SECTION THROUGH AGGREGATE BASE
 - ALL ASSOCIATED ELECTRICAL
 - EXISTING COMPASS PAD:
 - PAVEMENT REMOVAL AND GRADING
 - PHASE 2A:**
 - PROPOSED RUNWAY 14-32:
 - GRADING, TYPICAL SECTION THROUGH AGGREGATE BASE
 - ALL ASSOCIATED ELECTRICAL
 - TAXIWAY BRAVO AND GOLF:
 - REMOVE PAVEMENT AND AGGREGATE BASE
 - GRADING, TYPICAL SECTION THROUGH AGGREGATE BASE
 - PHASE 2B:**
 - PROPOSED RUNWAY 14-32:
 - PAVING BASE COURSE
 - TAXIWAY BRAVO, DELTA, AND GOLF:
 - PAVING BASE COURSE
 - PHASE 2C:**
 - PROPOSED RUNWAY 14-32 & TAXY B, C, D, F, F1, AND F2:
 - PAVE WEAR COURSE
 - PHASE 2D:**
 - TAXIWAY HOTEL:
 - PAVEMENT REMOVAL, GRADING
 - OPEN PROPOSED RUNWAY 14-32
CLOSE EXISTING RUNWAY 14-32**
 - PHASE 3A:**
 - EXISTING RUNWAY 14-32 (TAXIWAY ECHO) NORTH OF RUNWAY 4-22 - ALT 2:
 - REMOVE PAVEMENT AND AGGREGATE BASE
 - GRADING, TYPICAL SECTION THROUGH WEAR COURSE PAVING
 - TAXIWAY CHARLIE - ALT 2:
 - GRADING, TYPICAL SECTION THROUGH WEAR COURSE PAVING
 - TAXIWAY F2 AND HANGAR ACCESS - BASE BID:
 - GRADING, TYPICAL SECTION THROUGH WEAR COURSE PAVING
 - BASIN 1, 4 AND 5 CONSTRUCTION
 - POND 1 CONSTRUCTION
 - PHASE 3B:**
 - CONCURRENT WITH PHASE 3A
 - EXISTING RUNWAY 14-32 (TAXIWAY ECHO) ALT 3:
 - REMOVE PAVEMENT AND AGGREGATE BASE
 - GRADING, TYPICAL SECTION THROUGH WEAR COURSE PAVING
 - TAXIWAY DELTA - ALT 3:
 - GRADING, TYPICAL SECTION THROUGH WEAR COURSE PAVING
 - PHASE 4:**
 - TAXIWAY BRAVO AND ECHO:
 - PAVEMENT REMOVAL
 - GRADING, TYPICAL SECTION THROUGH WEAR COURSE PAVING

- GENERAL NOTES:**
- CONTRACTOR TO SUPPLY, PLACE, RELOCATE, MAINTAIN AND REMOVE TRAFFIC AND AIRPORT SECURITY DEVICES, AS SHOWN ON THE SHEETS, INCLUDING BUT NOT LIMITED TO:
- PROJECT SIGNAGE FOR HAUL ROUTE AND SITE ACCESS.
 - LIGHTED RUNWAY CLOSURE MARKER
 - LIGHTED LOW PROFILE BARRICADES.
 - GATE GUARD SERVICES.
 - CONSTRUCTION RADIO CAR SERVICES.
 - CONSTRUCTION VEHICLE MARKINGS.

- NOTES:**
- ALL SUBSURFACE UTILITIES, INCLUDING STORM SEWER AND ELECTRICAL DUCTS TO BE PROTECTED BY CONTRACTOR. ANY DAMAGED UTILITIES TO BE REPAIRED BY CONTRACTOR AT NO COST TO OWNER.
 - THE CONTRACTOR SHALL BE RESPONSIBLE FOR RECORDING EXISTING PAVEMENT MARKINGS PRIOR TO REMOVAL OF PAVEMENT FOR REPLACING MARKINGS IN THEIR ORIGINAL LOCATIONS, IF NECESSARY.
 - RADIO CAR IS REQUIRED AT ALL TIMES CONTRACTOR IS PRESENT INSIDE AIRPORT FENCE.**



3535 VADNAIS CENTER DR
LAKE ELMO, MN 55009
PHONE: 951/982-1500
FAX: 951/982-1500
WWW.SEHINC.COM

MINNESOTA STATE POLICE
METROPOLITAN AIRPORT

I HEREBY CERTIFY THAT THIS PLAN, SPECIFICATION, OR CONTRACT DOCUMENTS WERE PREPARED BY ME OR UNDER MY SUPERVISION AND THAT I AM A LICENSED PROFESSIONAL ENGINEER UNDER THE LAWS OF THE STATE OF MINNESOTA

Lindsay R. Riebt
Landscape Architect, P.E.
DATE: 3/17/2021 LICENSE NO: 4992

LAKE ELMO AIRPORT (21D)
2021 RUNWAY 14/32
REPLACEMENT - PHASE 3
LAKE ELMO, MN

MARK	DATE	DESCRIPTION	REVISIONS

SEH FILE NO. MAC00158409
MAC PROJECT NO. 111-1-024
ISSUE DATE. 03/15/2021
LRR JCI

DESIGNED BY
DRAWN BY

Sheet Elmo Hendrickson, Inc. © (SEH)
© 2021 Short Elliott Hendrickson, Inc.

SHEET TITLE
PHASING PLAN
SHEET
G020

SHEET 4 OF 114