



Lake Elmo Airport
ADVISORY COMMISSION
LEAAC

Regular Meeting

February 27, 2023



Agenda

- Welcome & Introductions
- Approval of Meeting Minutes
- Commission Purpose
- Proposed 2023-2024 Work Plan
- Co-Chair Elections
- Airport Manager Update
- Airport User & Community Spotlights
- Q4 2022 Aircraft Ops & Complaints
- Public Comment
- Member Comment
- Review LEAAC meeting schedule



Welcome & Introductions



Action

Approval of Meeting Minutes for 11/28/2022



Information



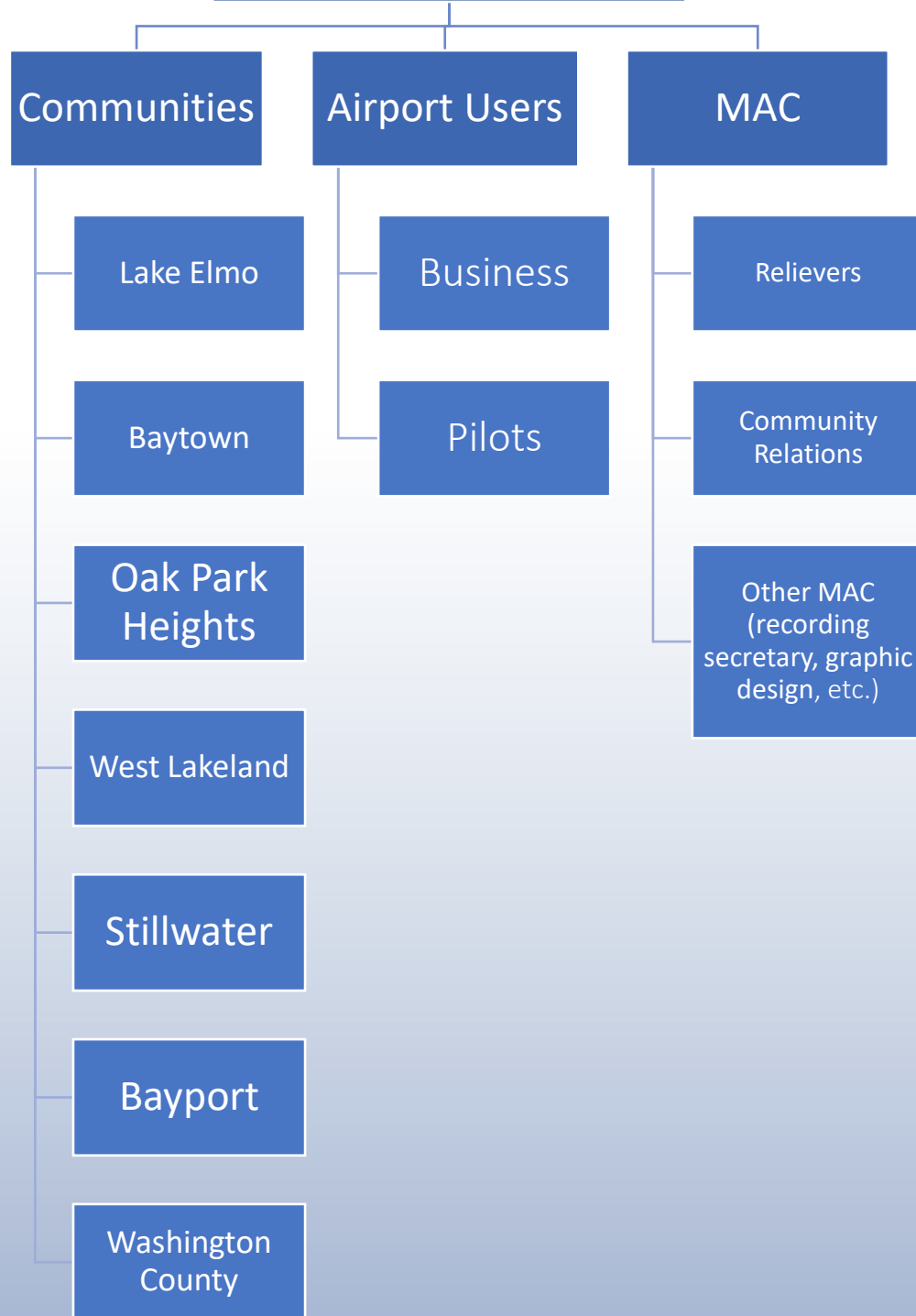
LEAAC Purpose

Lake Elmo Airport



ADVISORY COMMISSION

LEAAC



Goal and Purpose

GOAL:

Further the general welfare of the community and the Lake Elmo Airport through minimizing or resolving problems created by the aircraft operations at the airport.

PURPOSE:

1. **ADVISE** the community and MAC on all matters affecting the Lake Elmo Airport, the classification, rules and regulations supplied to the operation of the Airport and the development of lands adjacent to the Airport
2. **COOPERATE** with the MAC staff in reviewing matters affecting Lake Elmo Airport use and control
3. **RECOMMEND** to the MAC regarding any proposal affecting the use or operations of Lake Elmo Airport



Action



LEAAC Work Plan 2023-2024

Lake Elmo Airport



ADVISORY COMMISSION

Proposed LEAAC Work Plan 2023-2024

LEAAC Work Plan focuses on furthering the general welfare of the community and the Lake Elmo Airport

Advise/Cooperate/Recommend

1. Sound Monitoring Study
2. Noise Abatement Plan (NAP) & Pilot Guide

Education/Orientation

1. Airport 101
2. Noise 101
3. Environment 101
4. Airport User and Tenant Highlights
5. Community Highlights
6. Airport Tour

Communication/Coordination

1. Monitor Developments on & off-airport
2. Updates about Land-use Developments
3. Updates about Airport Operations & Noise Complaints
4. User and Community Interest Hot Topics

Upcoming 2023 Meetings:

May 22, 2023

August 28, 2023

November 27, 2023



Action



Community Member Co-Chair Election

Lake Elmo Airport



ADVISORY COMMISSION

Co-Chair Elections

The representatives shall elect by majority vote from membership present (in-person or through use of virtual collaboration tool) at the time of voting two (2) chairpersons; one (1) from the **PUBLIC REPRESENTATIVE** constituency and one (1) from the **USER REPRESENTATIVE**.

The chairpersons will alternate conducting chairperson duties from one meeting to the next. The Chairpersons shall serve for a two (2) year term or until his/her representation on the Commission terminates, whichever occurs first; and until his/her successor is elected. The powers and duties of the Chairpersons are as follows:

1. To preside at all meetings of the Commission.
2. To call special meetings of the Commission as he/she deems necessary, or upon request by two (2) USER or two (2) PUBLIC REPRESENTATIVES.
3. To sign as Chairpersons of this Commission, with the approval of the membership, certifications and other papers and instruments in writing that may require such signature.
4. To perform such other duties and tasks as these Bylaws or as the membership shall from time to time prescribe.



Community/Public Co-Chair Election

- LEAAC Commissioners who are appointed as Community/Public Members may nominate any Community/Public Member as Co-Chair
- Only Community/Public Members will vote for nominated Co-Chair(s)
- Community/Public Nominee with majority of votes is elected as Co-Chair and will run the Airport User Co-Chair election, and
- Community/Public Co-Chair has the option to run the remainder of today's meeting



Community/Public Co-Chair Election

Community/Public Representatives

Lisa McGinn, Lake Elmo

Michele Hanson, Bayport

Mary McComber, Oak Park Heights

Rick Weyrauch, Baytown

Ted Kozlowski, Stillwater

Gary Kriesel, Washington County

Phillip Moosbrugger, West Lakeland



Action



Airport User Member Co-Chair Election

Lake Elmo Airport



ADVISORY COMMISSION

Co-Chair Elections

The representatives shall elect by majority vote from membership present (in-person or through use of virtual collaboration tool) at the time of voting two (2) chairpersons; one (1) from the **PUBLIC REPRESENTATIVE** constituency and one (1) from the **USER REPRESENTATIVE**.

The chairpersons will alternate conducting chairperson duties from one meeting to the next. The Chairpersons shall serve for a two (2) year term or until his/her representation on the Commission terminates, whichever occurs first; and until his/her successor is elected. The powers and duties of the Chairpersons are as follows:

1. To preside at all meetings of the Commission.
2. To call special meetings of the Commission as he/she deems necessary, or upon request by two (2) USER or two (2) PUBLIC REPRESENTATIVES.
3. To sign as Chairpersons of this Commission, with the approval of the membership, certifications and other papers and instruments in writing that may require such signature.
4. To perform such other duties and tasks as these Bylaws or as the membership shall from time to time prescribe.



Airport User Co-Chair Election

- LEAAC Commissioners who are appointed as Airport User Members may nominate any Airport User Member as Co-Chair
- Only Airport User Members will vote for nominated Co-Chair(s)
- Member with majority of votes is elected as Airport User Co-Chair and will run the remainder of today's meeting if Community/Public Co-Chair opted out



Airport User Co-Chair Election

Airport User Representatives

Luke Peterson, At-Large (Co-Chair)

Dag Selander, FBO

Marlon Gunderson, EAA Chapter 54

Paul Evenson, EAA Chapter 54

Jim Thomas, At-Large

Donaven Chase, At-Large

Doug Weiler, At-Large



Information

Airport Manager Update



Lake Elmo Airport



ADVISORY COMMISSION

LEAAC Presentation to the MAC Board on January 17, 2023



Luke Peterson

Co-chair

Lake Elmo Airport Advisory Commission



Website link to MAC
Commission and Committee
meeting videos:

[https://metroairports.org/resources/
commission-meetings](https://metroairports.org/resources/commission-meetings)

Information



Airport User Spotlight

Lake Elmo Airport



ADVISORY COMMISSION



Elden

What Elden appreciates most about Lake Elmo airport is its convenience and the culture of the users who readily share their technical skills with fellow airplane owners. The airplane owners at Lake Elmo Airport care about each other and the appearance of the airport.

Elden is retired after a career as a biomedical veterinary pathologist. He has lived in nearby Oakdale and has used Lake Elmo Airport as home base for his experimental airplane for over 30 years.

Elden built a Vans Aircraft RV-4 in 1989 (the first RV-4 built in MN) to participate in a combination of his family's farming enterprises, pursue his hobby of classic restorations and volunteer church mission projects while maintaining a demanding laboratory career.

He supported their local EAA chapter by flying Young Eagles out of the farm strip. His other interests have taken him through most states. His plane is his "time machine."

Information

Community Spotlight

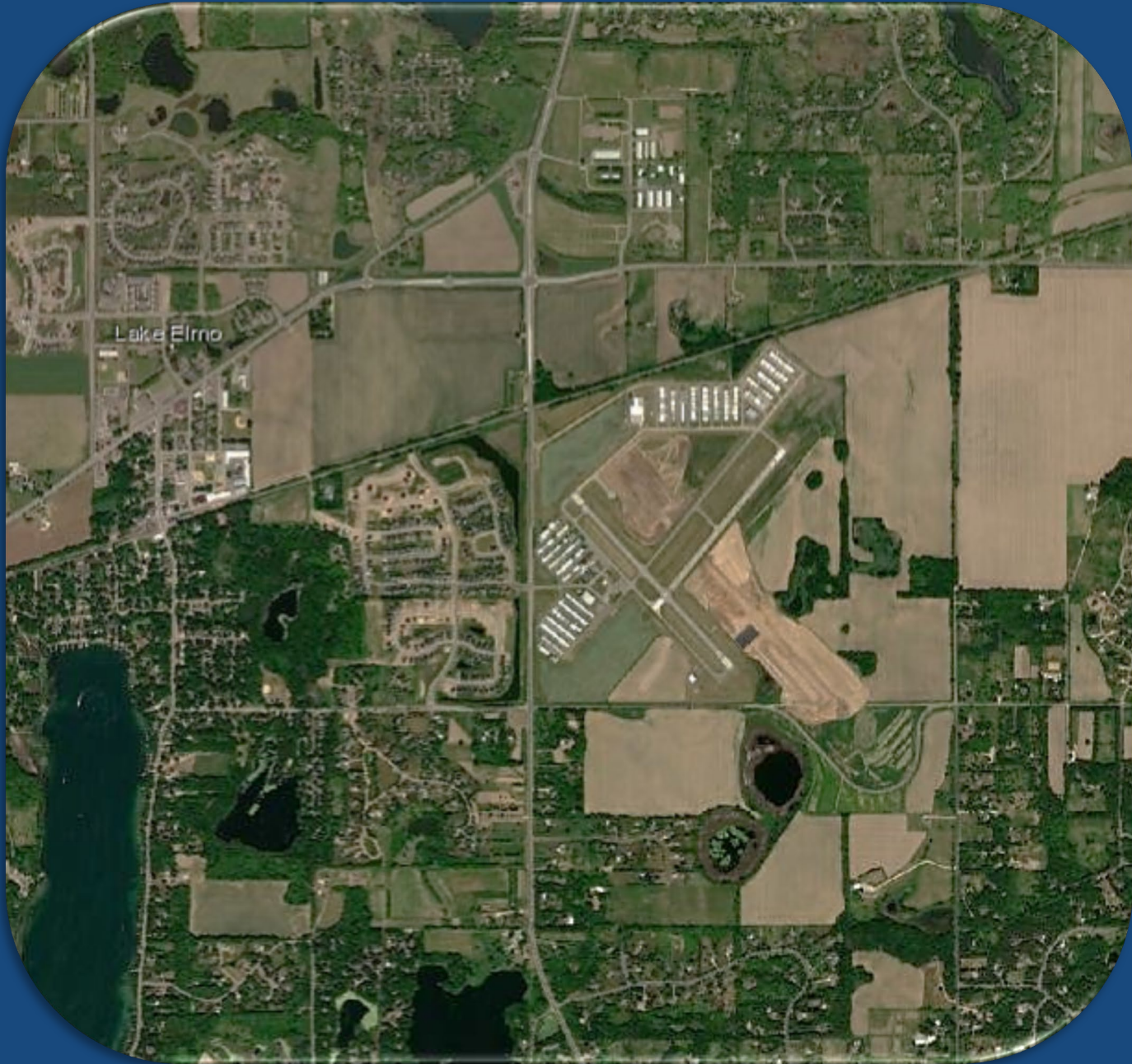


Lake Elmo Airport



ADVISORY COMMISSION





2020



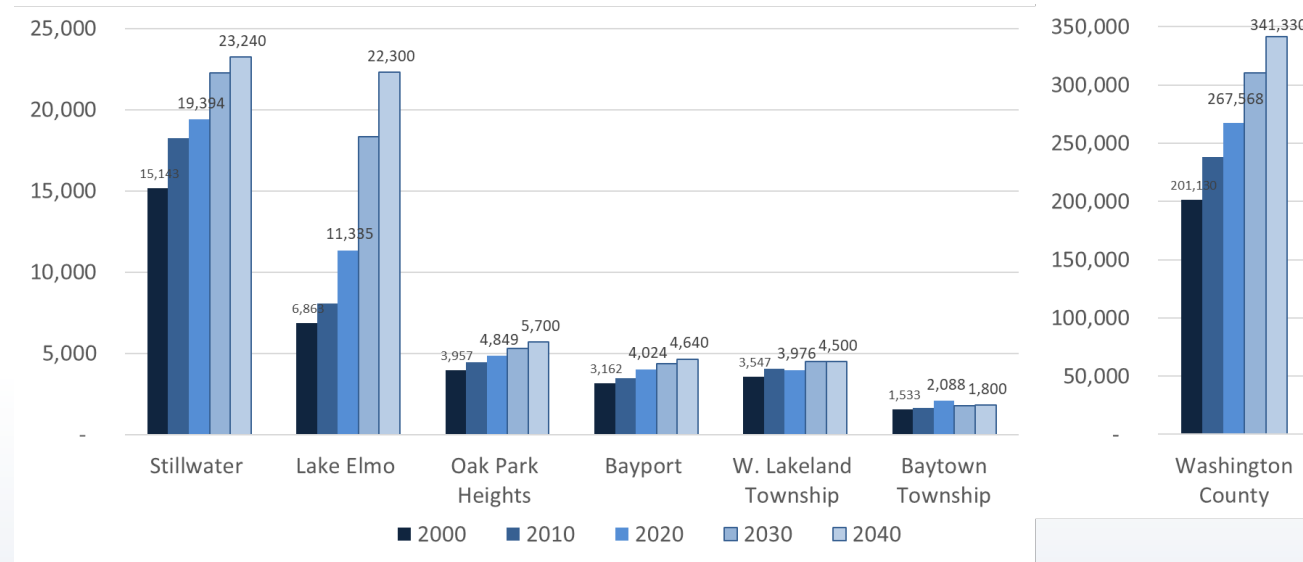
2022

Lake Elmo Airport Communities

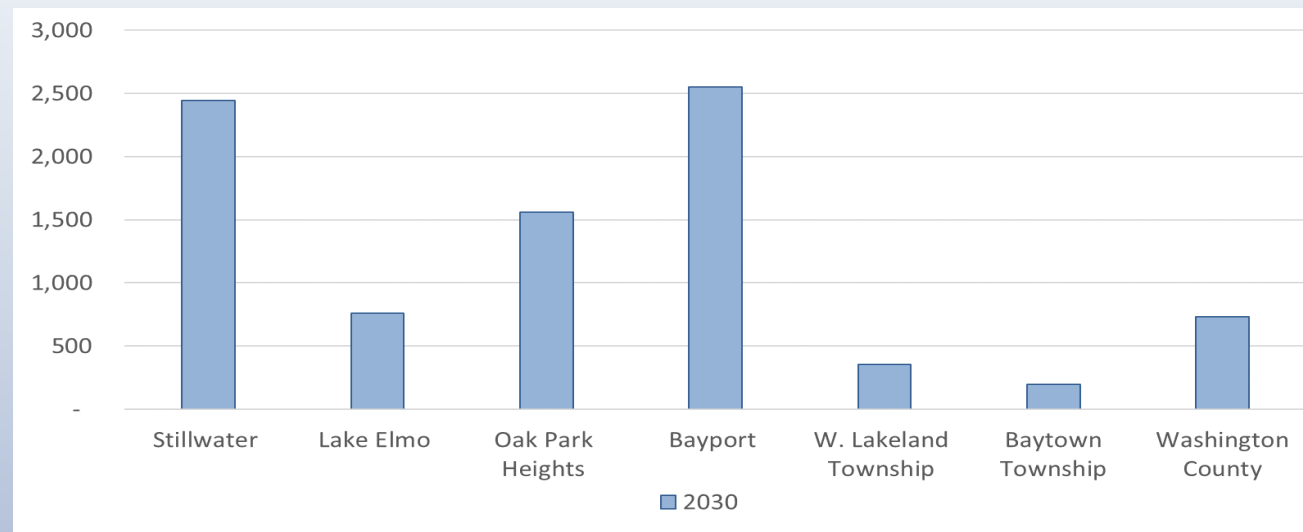
Lake Elmo Airport is situated between six communities in Washington County.

These six communities are projected to grow 24% between 2020 and 2030 with most of that growth occurring in the City of Lake Elmo.

Population



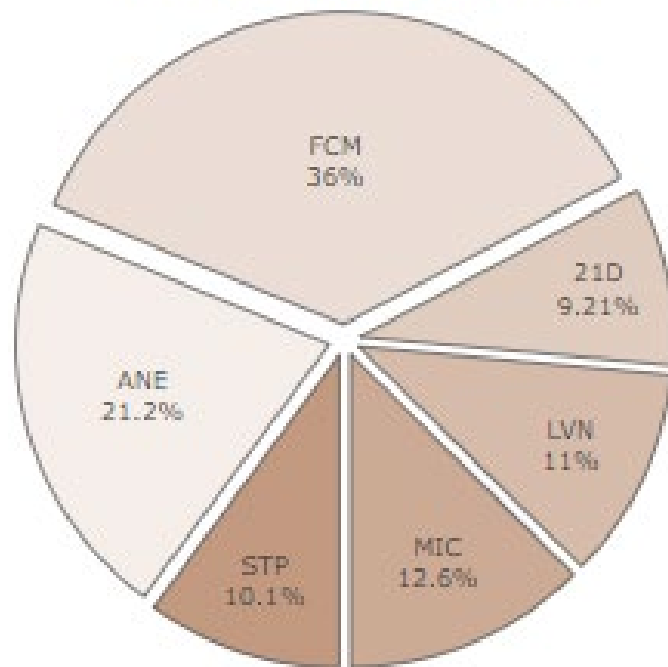
Population/Sq Mile



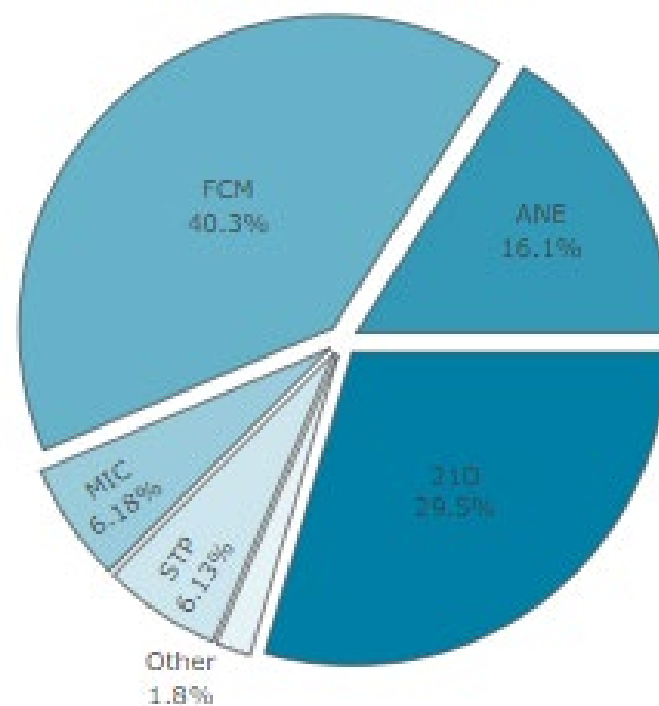
Information

Q4 2022 Aircraft Operations & Noise Complaints Summary

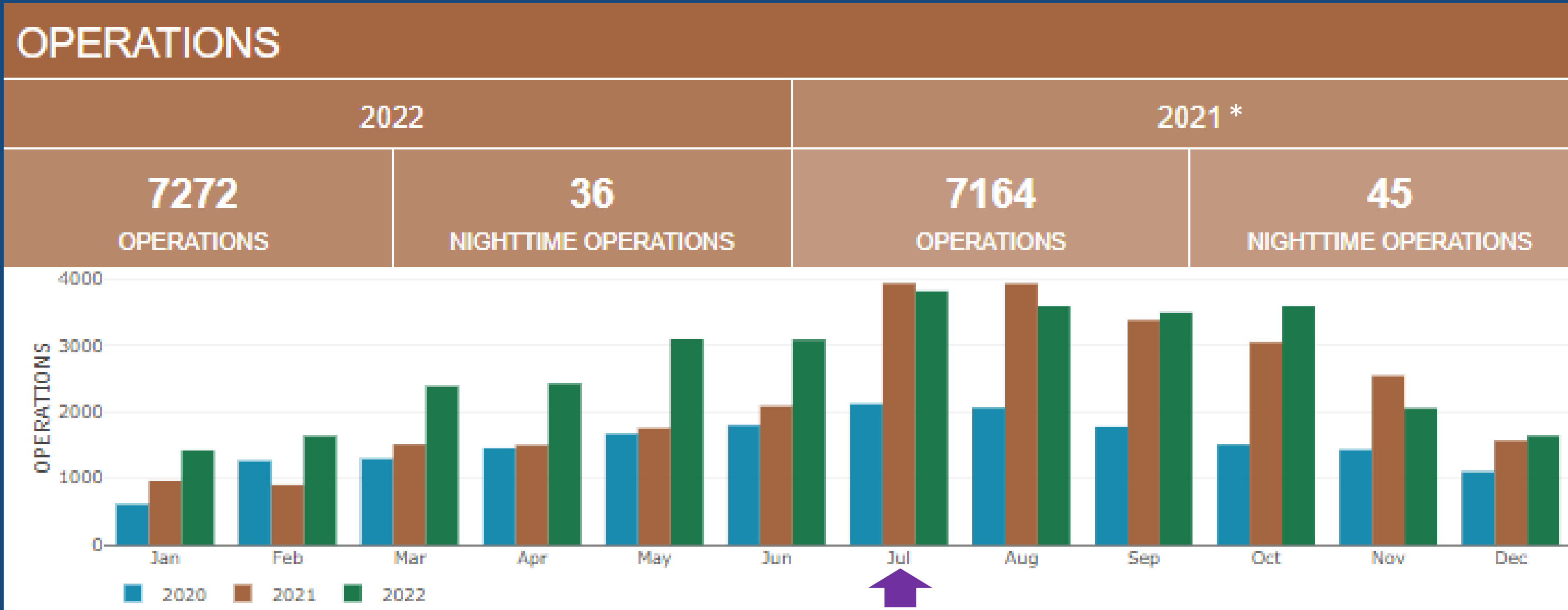
AIRCRAFT OPERATIONS



NOISE COMPLAINTS

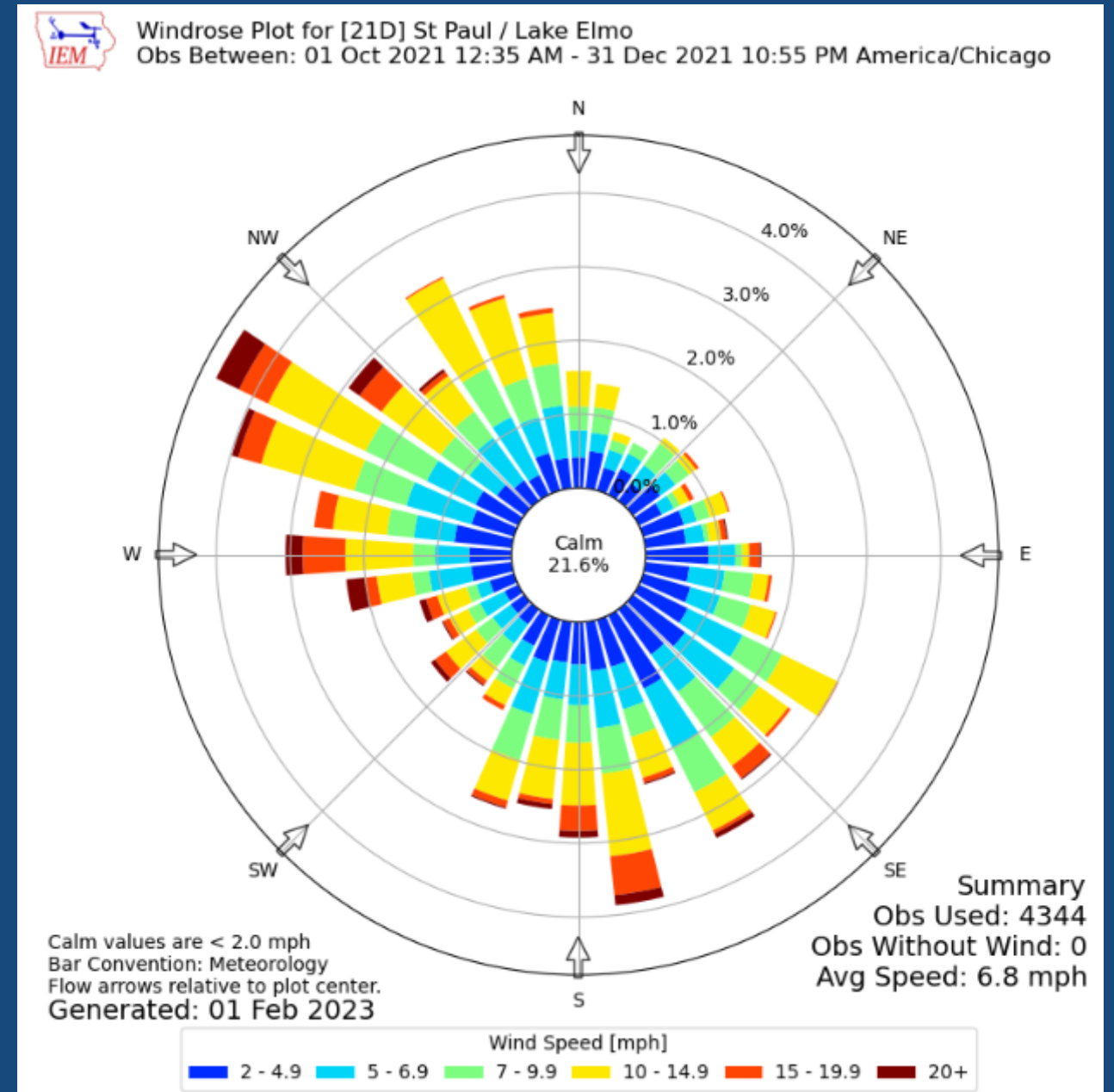
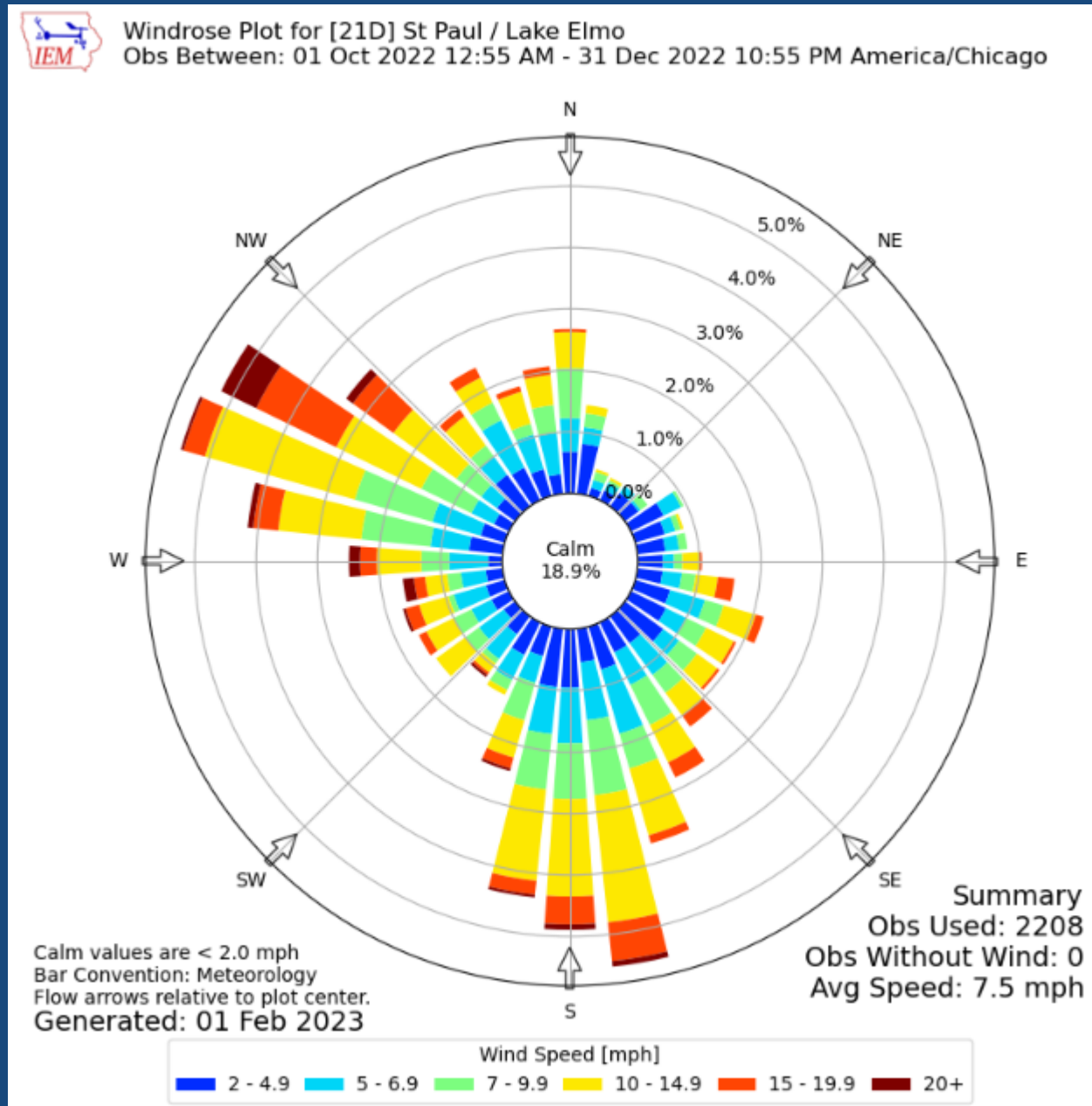


Lake Elmo Airport Operations 4th Quarter 2022



* Beginning on July 1, 2021, MACNOMS methodology for counting operations was updated to more accurately reflect total aircraft departures and arrivals at MAC airports.

Wind Summary Q4 2022 and 2021

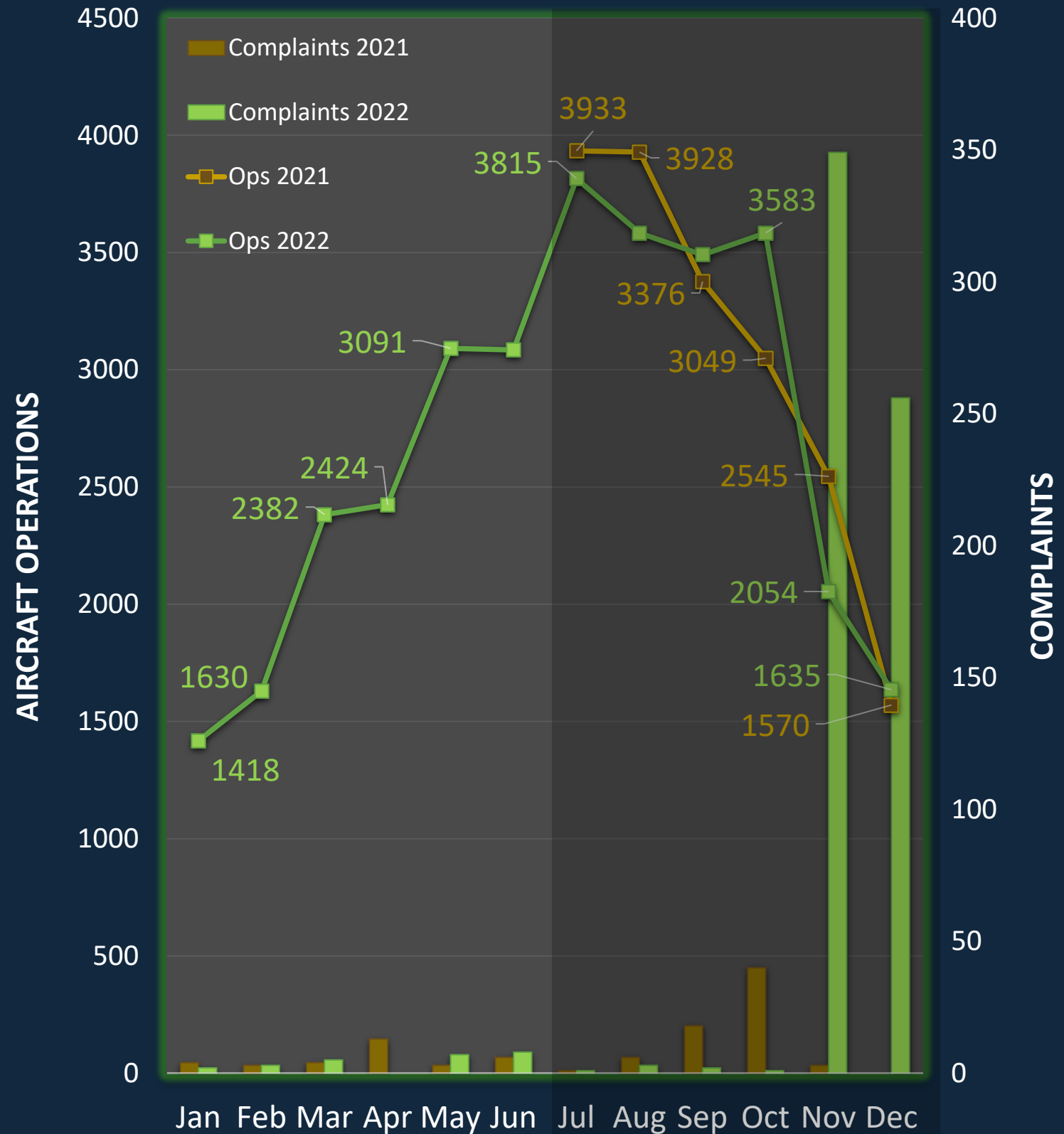


21D Aircraft Operations & Noise Complaint Comparison 2021*- 2022

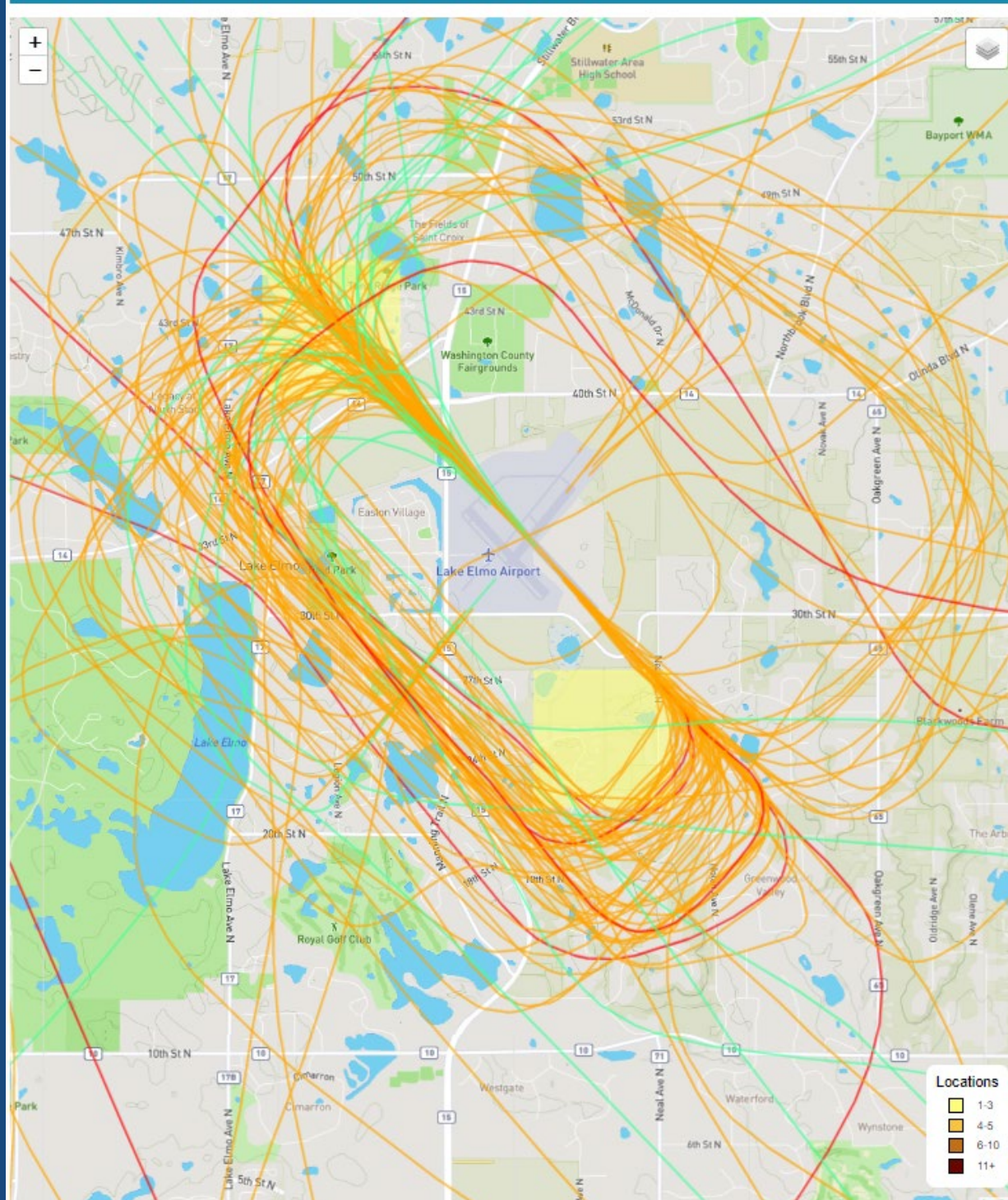
Jul-Dec 2022 v 2021:

-1.3% operations
+800% complaints

* Beginning on July 1, 2021, MACNOMS methodology for counting operations was updated to more accurately reflect total aircraft departures and arrivals at MAC airports.



Lake Elmo Airport (21D) - COMPLAINTS HEATMAP

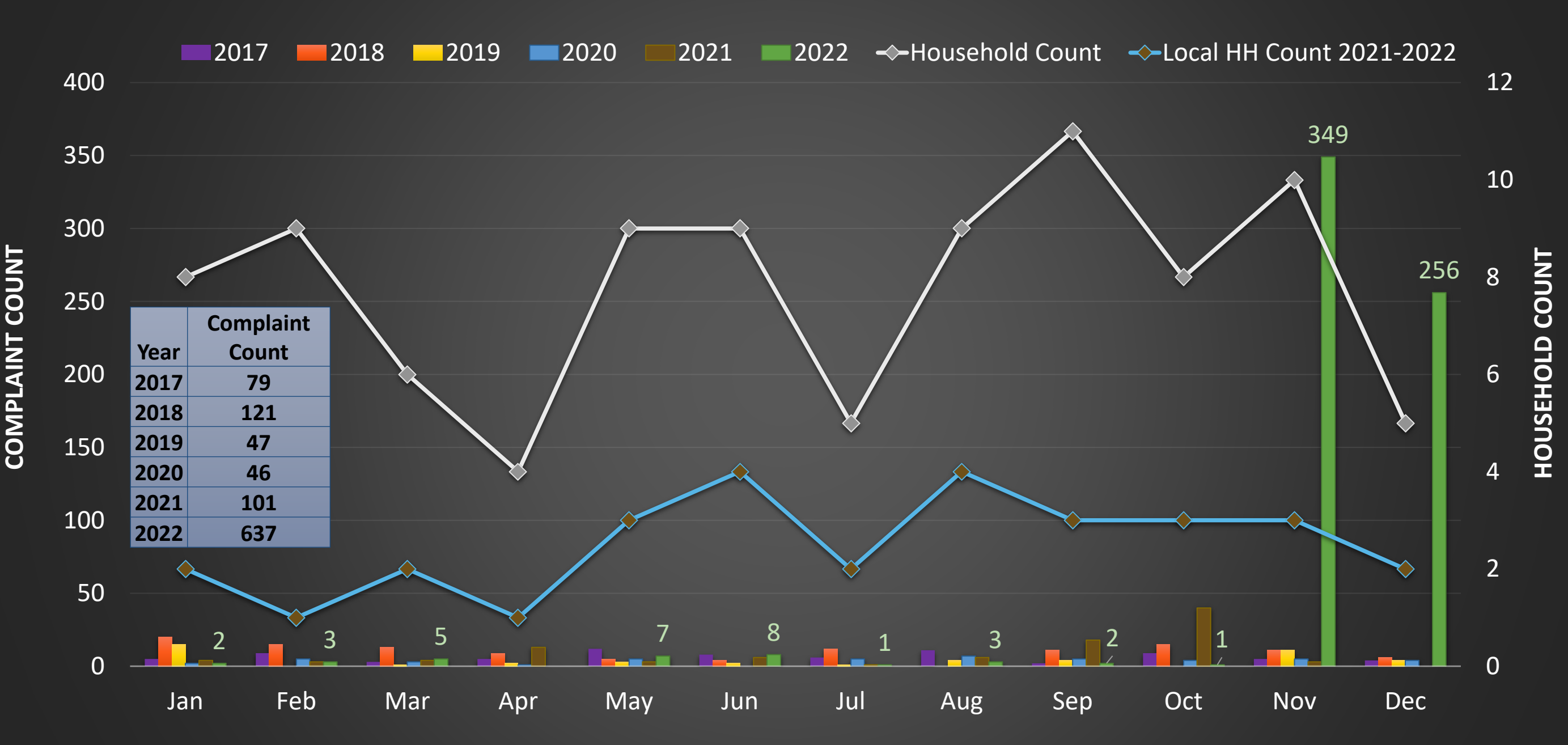


21D Aircraft Noise Complaint Locations Q4 2022

There are 3 locations in Q4 2022 that submitted 606 complaints, as follows:

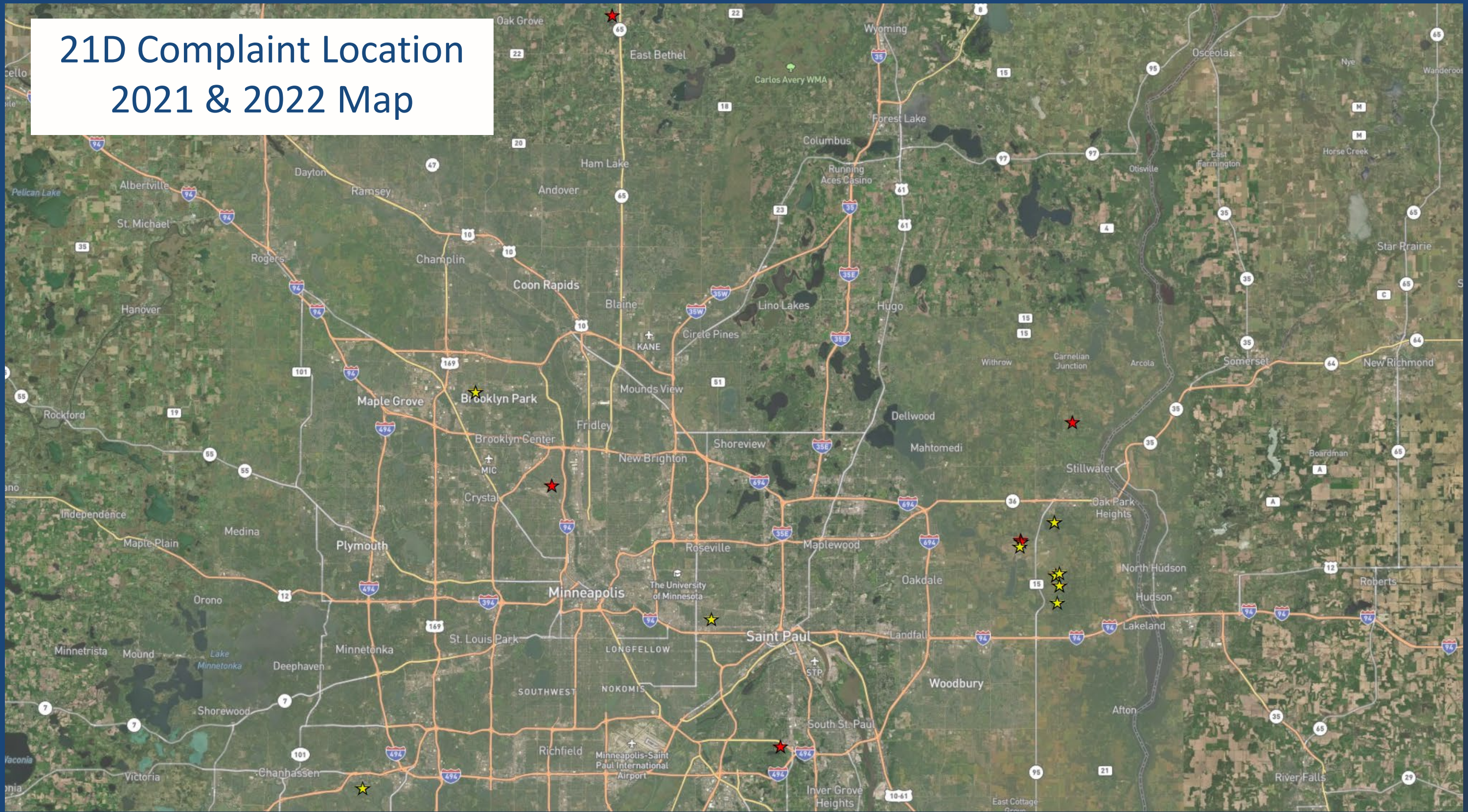
- 600 complaints from location north,
- 4 complaints from location south, and
- 2 complaints from Brooklyn Park

Lake Elmo Airport Monthly Complaint Levels



Quarterly Reports available here: <https://customers.macnoms.com/reports/relievers.html>

21D Complaint Location 2021 & 2022 Map



Lake Elmo Airport Complaints by City

City	2017	2018	2019	2020	2021	2022	Complaint Total	HH Total
BAYTOWN TOWNSHIP	2	2	1		2	1	8	4
BENTON TOWNSHIP					6		6	1
BROOKLYN PARK				16	3	2	21	1
EAST BETHEL						2	2	1
EDEN PRAIRIE	1	1		6	5		13	4
LAKE ELMO	1				1	601	603	4
MENDOTA HEIGHTS		6					6	1
MINNEAPOLIS	1	3	1	1		1	7	6
SAINT PAUL					2		2	1
SHOREWOOD			1				1	1
STILLWATER TOWNSHIP						2	2	1
SUNFISH LAKE						2	2	1
WEST LAKELAND TOWNSHIP	74	109	44	23	82	26	358	6
Grand Total	79	121	47	46	101	637	1031	---
Household Total	7	10	6	7	10	10	---	32
Local HH Count	5	5	4	3	6	6	971	15

Public Comment

Members of the public are welcome to share their remarks with the Commission.
Please state your name and address

Limit remarks to 3 minutes



Member Perspectives/ Announcements



**Next
Meetings**

**May 22, 2023
August 28, 2023
November 27, 2023**





Thank
you!