



Lake Elmo Airport
ADVISORY COMMISSION
LEAAC

Regular Meeting

June 9, 2025



Goal & Purpose of LEAAC

Advise/Recommend/Engage

We will work on ways to engage the neighbors who live and work in the surrounding communities to:

- Show the value of the airport to the community
- Maximize the positive educational, recreational, and economic aspects
- Use the airport and airport events to create community with the airport users and neighbors



Communication/Coordination

We will monitor what is happening at and around the airport and advise the MAC on how to best respond

- Noise and operations
- Development
- Other community interests



Education/Orientation

We will educate the LEAAC, MAC staff, and public attendees on airport operations, the users and the surrounding committees

- Airport operations
- Who uses this specific airport
- Who lives around this specific airport
- The various roles of operating and regulating organizations (e.g., MAC, FAA, USDA, MNDOT, etc.)”



Agenda



1. Welcome & Introductions

2. Consent Items

3. Public Comment

4. Business

- Increased Engagement with the Community- Action
- MAC Reporting Update

5. Information

- Washington County Project Update
- Community Spotlight
- Airport User Spotlight
- Airport Manager Update

6. Member Comment

7. Review Meeting Schedule



Welcome & Introductions

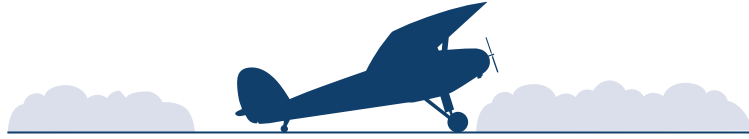


Remembering Mary McComber



Award Winner Community Advocate
Sister Kind
Home-Maker
Honest Changemaker
Interior Decorator
Leader
Daughter Friend Grandmother Fun Mother Amazing
LEAAC Co-Chair
Tenacious Role Model





Lake Elmo Airport
ADVISORY COMMISSION
LEAAC

Consent



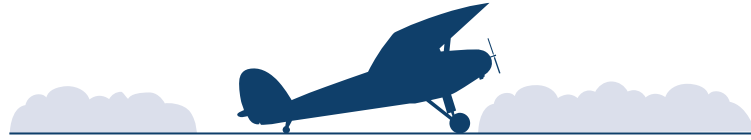
Public Comment

Members of the public are
welcome to share their
remarks with the
Commission.

**Please state your name
and address for the
record**

Limit remarks to 3 minutes





Lake Elmo Airport
ADVISORY COMMISSION
LEAAC

Business

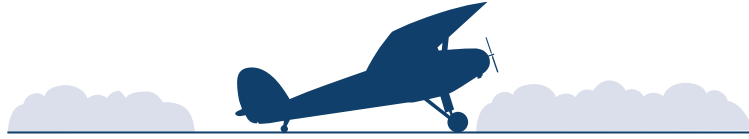




Lake Elmo Airport
ADVISORY COMMISSION
LEAAC

Increased Engagement with the Community





Lake Elmo Airport
ADVISORY COMMISSION
LEAAC

MAC Reporting Update



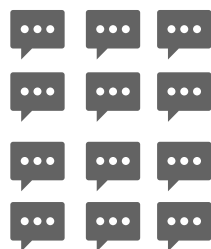
21D Total Households, Total Complaints, and Total Operations - 1Q 2025



Households



17



6,191

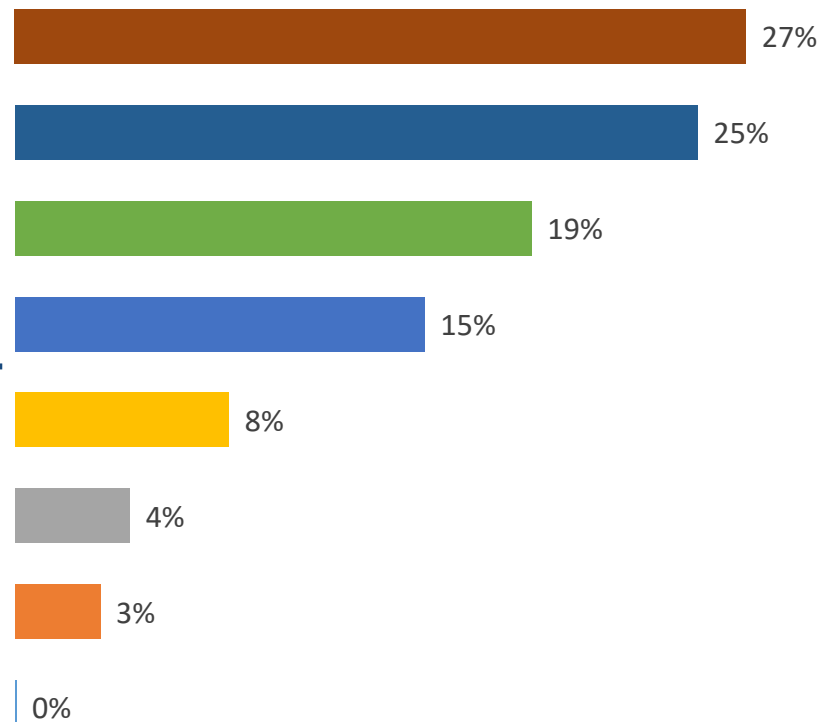
Complaints



Operations
& Complaints

Percent of Total Complaints

85%

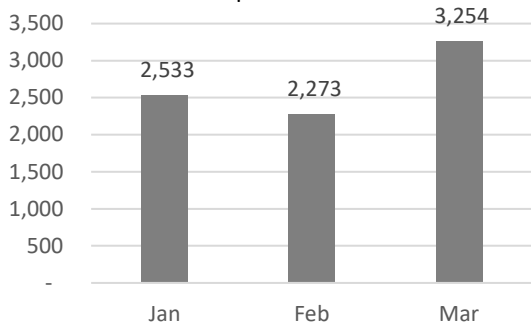


New Households since
January 2024

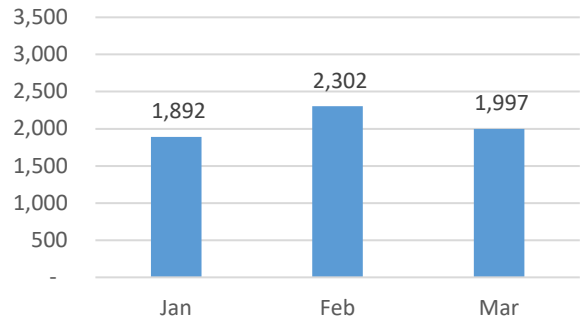


1

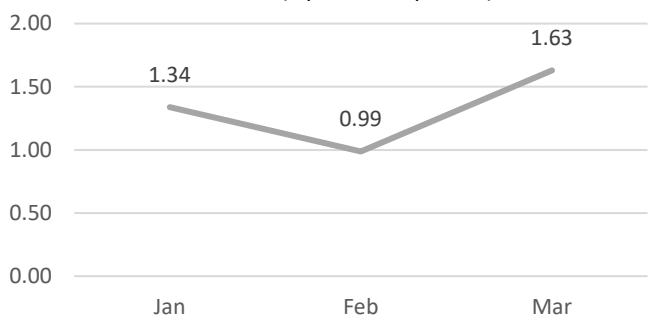
Operations



Complaints



Ratio (Ops to Complaints)





Lake Elmo Airport
ADVISORY COMMISSION
LEAAC

Information





Lake Elmo Airport
ADVISORY COMMISSION
LEAAC

Washington County Project Update



A large green silhouette of Washington County with a white, torn-paper-style border on its right side.

Lake Elmo Airport Advisory Commission

Washington County Commissioner Bethany Cox

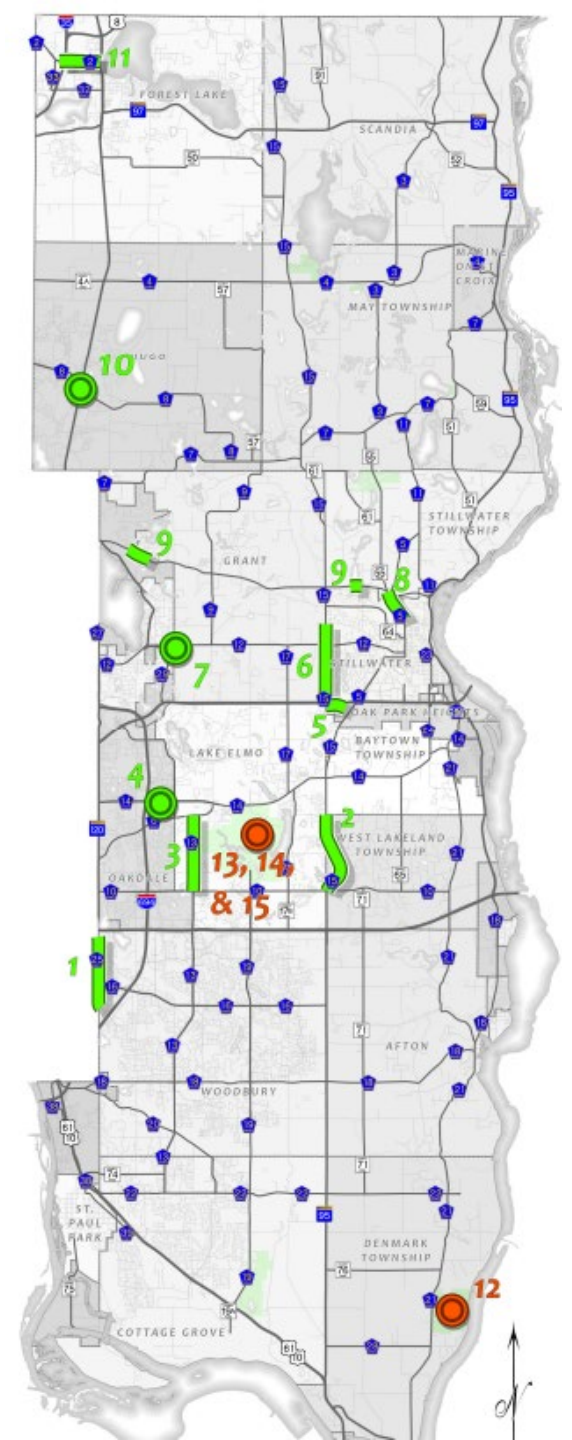
June 9, 2025

Capital Improvement Plan (CIP)

Developed under County Policy #2203 –
Capital Improvement Plan

Covers a 5-year period with the 1st year
projects to be included in the adopted budget

Projects include buildings, land, and
transportation projects



Road and Bridge

County Highway 15 (Manning Avenue at County Highway 14 Realignment

- Construction Complete!



Road and Bridge

County Highway 15 (Manning Avenue) at 30th Street Signal

- Construction Complete!



Road and Bridge

County Road 65 (Oakgreen Avenue) Reconstruction

- Construction Complete!



Road and Bridge

RB-2567: CSAH 15 – CSAH 14 & CSAH 24 Intersection

- Construction to be completed in 2025
- Currently closed to wrap up railroad work
- Improvements include:
 - Railroad crossing improvements
 - New Traffic Signal (stoplight)



Road and Bridge

RB-2684: CSAH 15 – CASH 10 to UPRR Tracks

- Construction scheduled for August – October 2025
- Improvements include:
 - Pavement Replacement
 - Intersection Improvements
 - Pond Construction
 - Addition of Turn Lanes
- Northbound traffic only during construction
- Southbound closure throughout construction



Road and Bridge

RB-2652: 58th Street Extension/County Highway 15 South Segment

- Location: From the proposed interchange at CSAH 15 (Manning Avenue) and to CSAH 15 (Stillwater Boulevard) in Oak Park Heights, Stillwater, and Stillwater Township
- Improvements to include:
 - New highway construction to connect Manning interchange to Stillwater Boulevard
 - Pedestrian improvements
 - Stormwater management
- Construction scheduled for: 2025/2026



Road and Bridge

RB-2674: CSAH 17 at TH 36 Intersection

- Location: Intersection at Highway 36 & CSAH 17 in the City of Lake Elmo and Grant
- Improvements to include:
 - Grade separated interchange with ramps
 - Pedestrian facilities along CSAH 17
 - New frontage road on south side of Highway 36
- Construction scheduled for: 2026 and 2027



Road and Bridge

RB-2808: County Highway 10, 17, and 17B Intersection Improvement Project

- Developed in coordination with Lake Elmo Elementary School
- Improvements to include:
 - Intersection Study
 - Stakeholder Engagement
 - Pedestrian Analysis
- Construction scheduled for: 2028
- ONLINE ENGAGEMENT LIVE NOW through June 18!!!
 - <https://www.washingtoncountymn.gov/County10and17>



Road and Bridge

Future Projects (5-20 years until construction)

- CSAH 15 (Manning Avenue) Expansion
 - CSAH 10 (10th Street) to Stillwater Area High School
 - Four Lanes with median
 - Pedestrian facilities
- CSAH 14 (Stillwater Boulevard) Improvements
 - Downtown Lake Elmo
 - Pedestrian facilities
- CSAH 17 (Lake Elmo Avenue) Improvements
 - Downtown Lake Elmo
 - Pedestrian facilities
- Central Greenway Regional Trail

Thank You



Lake Elmo Airport
ADVISORY COMMISSION
LEAAC

Community Spotlight



LEAAC Members Share Community Highlights and Connection to Lake Elmo Airport





Lake Elmo Airport
ADVISORY COMMISSION
LEAAC

Airport User Spotlight



Rishiraj

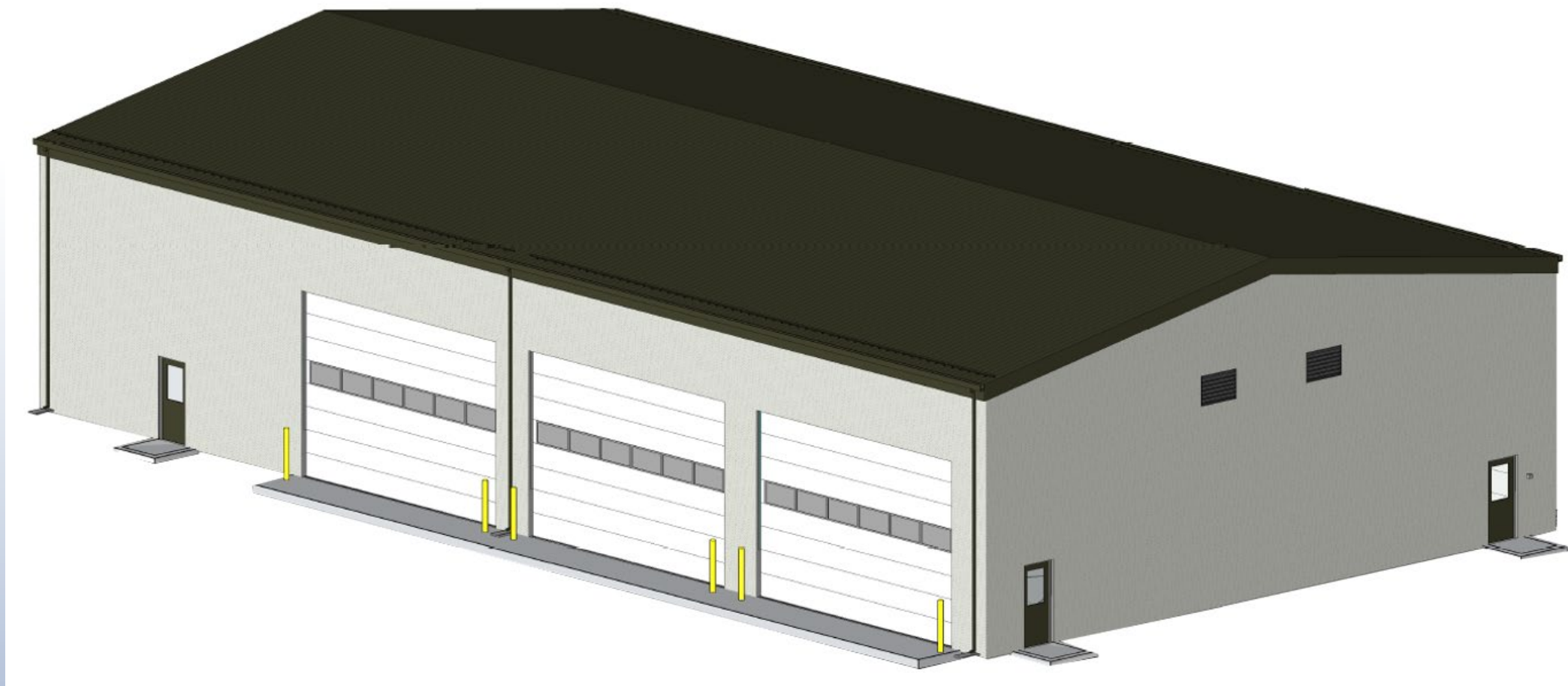




Lake Elmo Airport
ADVISORY COMMISSION
LEAAC

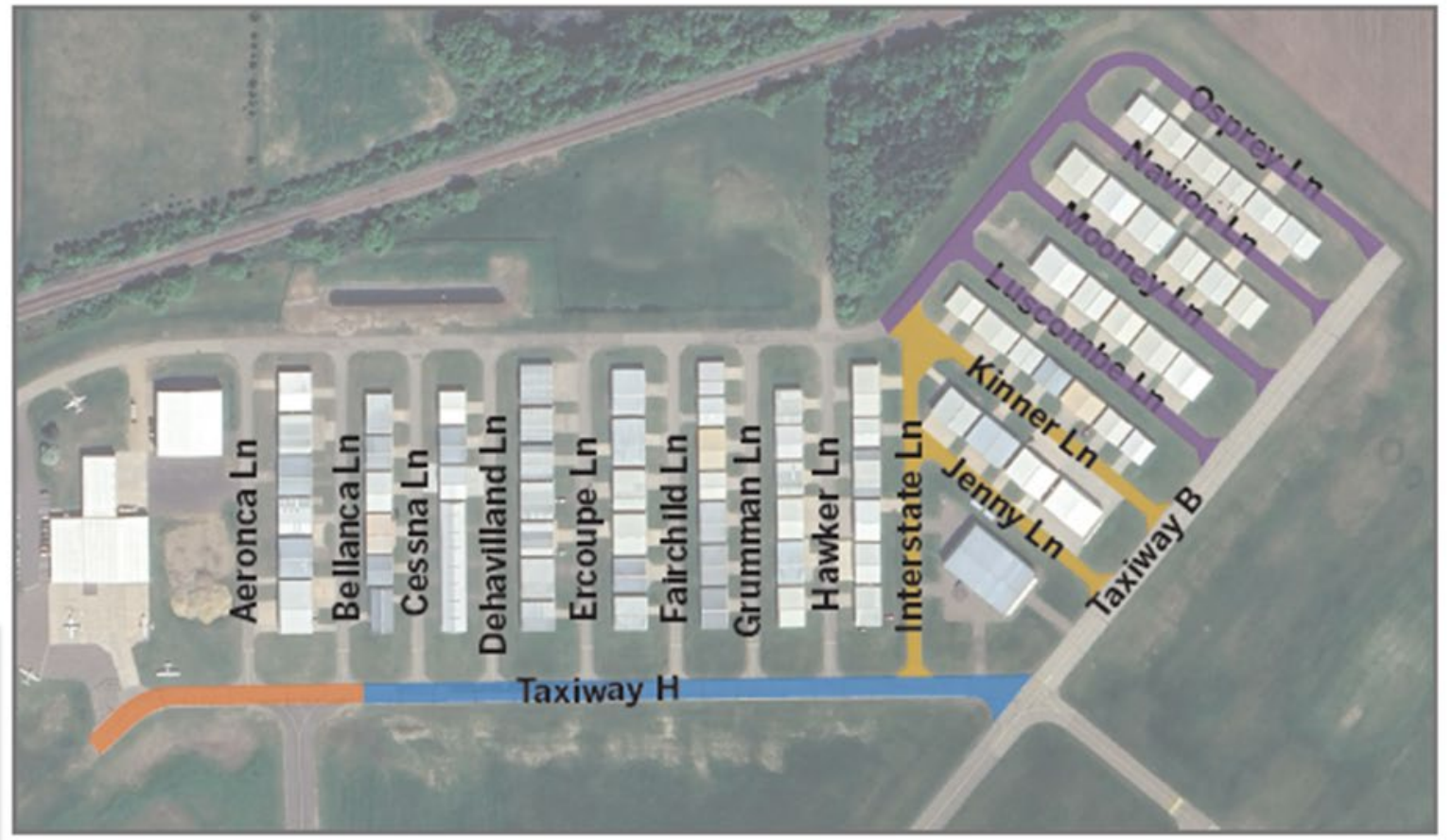
Airport Manager Update





Legend

- Phase 1 Project Area
- Phase 2 Project Area
- Phase 3 Project Area
- Phase 4 Project Area



Schedule

The reconstruction project is limited to 36 working days. Construction is anticipated to begin on or after July 28, 2025.



Construction Impact

- Phase 1 (12 Working Days)
- Phase 2 (6 Working Days)
- Phase 3 (12 Working Days)
- Phase 4 (12 Working Days)





Steps Taken:

- **Radio and speaker acquired**
- **MAC Electrician has a plan for wiring**
- **Informational signs and displays**

Challenges encountered:

- No footings**
- Load bearing concerns**
- Strong winds**
- Pursuing rebuild or reinforcement options**





Lake Elmo Airport
ADVISORY COMMISSION
LEAAC

Member Comment





Lake Elmo Airport
ADVISORY COMMISSION
LEAAC

Review Meeting Schedule



2025 LEAAC Meeting Dates:

May							June							July							August						
S	M	T	W	T	F	S	S	M	T	W	T	F	S	S	M	T	W	T	F	S	S	M	T	W	T	F	S
				1	2	3	1	2	3	4	5	6	7			1	2	3	4	5						1	2
4	5	6	7	8	9	10	8	9	10	11	12	13	14	6	7	8	9	10	11	12	3	4	5	6	7	8	9
11	12	13	14	15	16	17	15	16	17	18	19	20	21	13	14	15	16	17	18	19	10	11	12	13	14	15	16
18	19	20	21	22	23	24	22	23	24	25	26	27	28	20	21	22	23	24	25	26	17	18	19	20	21	22	23
25	26	27	28	29	30	31	29	30						27	28	29	30	31			24	25	26	27	28	29	30
																					31						
September							October							November							December						
S	M	T	W	T	F	S	S	M	T	W	T	F	S	S	M	T	W	T	F	S	S	M	T	W	T	F	S
	1	2	3	4	5	6				1	2	3	4							1		1	2	3	4	5	6
7	8	9	10	11	12	13	5	6	7	8	9	10	11	2	3	4	5	6	7	8	7	8	9	10	11	12	13
14	15	16	17	18	19	20	12	13	14	15	16	17	18	9	10	11	12	13	14	15	14	15	16	17	18	19	20
21	22	23	24	25	26	27	19	20	21	22	23	24	25	16	17	18	19	20	21	22	21	22	23	24	25	26	27
28	29	30					26	27	28	29	30	31		23	24	25	26	27	28	29	28	29	30	31			
														30													



Thank you for joining us!