



Lake Elmo Airport
ADVISORY COMMISSION
LEAAC

Regular Meeting

May 25, 2022



Agenda



Welcome & Introductions

Approval of Meeting Minutes: 12-1-2021 & 2-23-2022

LEAAC One-Year Anniversary

Airport User Spotlight

EAA Chapter 54 Young Eagles

Flight Training Process

Airport Manager Update

Airport Tour & Grand Opening Discussion

Q1 2022 Aircraft Operations & Complaints

Public Comment

Member Comment

Set LEEAC meeting schedule

Adjourn

Lake Elmo Airport



ADVISORY COMMISSION

Welcome & Introductions



Goal & Purpose of LEAAC

The goal of the LEAAC is to further the general welfare of the community and the Lake Elmo Airport through minimizing or resolving problems created by the aircraft operations at the airport.

PURPOSE:

1. advise the community and the Metropolitan Airports Commission with regard to all matters affecting the Lake Elmo Airport, the classification, rules and regulations supplied to the operation of the Airport and the development of lands adjacent to the Airport
2. cooperate with the Metropolitan Airports Commission staff in reviewing matters affecting the use and control of the Lake Elmo Airport
3. make recommendations to the Metropolitan Airports Commission regarding any proposal affecting the use or operations of Lake Elmo Airport



Approval of Meeting Minutes 12-1-2021



Approval of Meeting Minutes 2-23-2022



**Happy
Anniversary!**



Airport User Spotlight:

Dave



Dave has been pilot since 1990. He build a Kitfox Aircraft (airworthiness certificate in 2009) and shortly afterwards received his repairman's certificate for the airplane. Dave has been flying the Kitfox ever since and has been involved in many EAA events including Young Eagles, Adult Eagle Flights and Farnsworth Hangar Tours.

Currently the Kitfox is getting a new engine, which should be ready for flight before spring allowing for many more events and hours aloft.

What Dave loves most about Lake Elmo Airport?

Dave is very appreciative of the local resources during the Kitfox build. There is an incredible amount of knowledge concerning aircraft building and maintenance available through members of the EAA chapters at Lake Elmo and South St. Paul Airports. Many of the folks are retired or current airline pilots and mechanics who worked for Northwest and Delta.



**Experimental
Aircraft Association
(EAA)
Chapter 54
Young Eagles
Program**



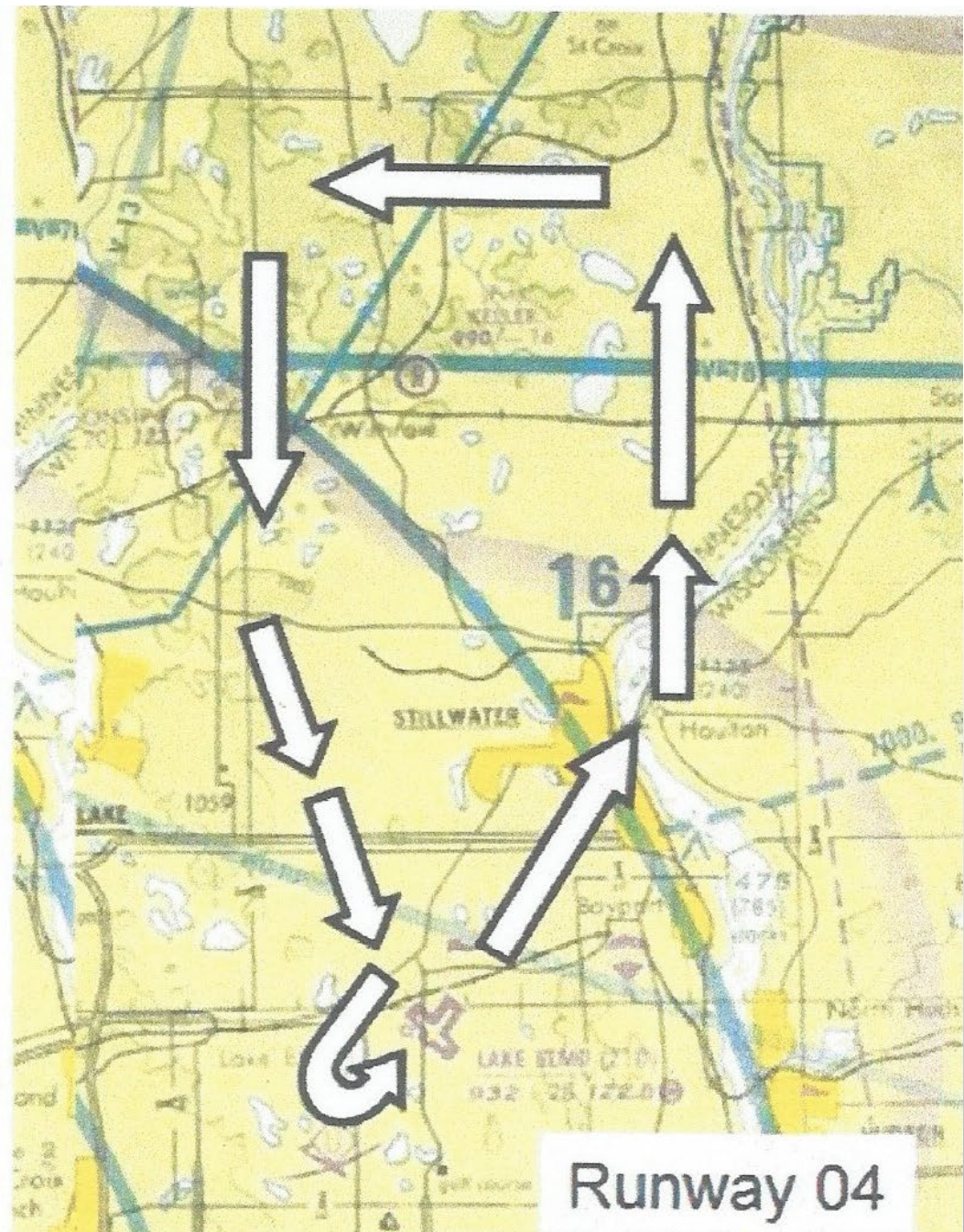
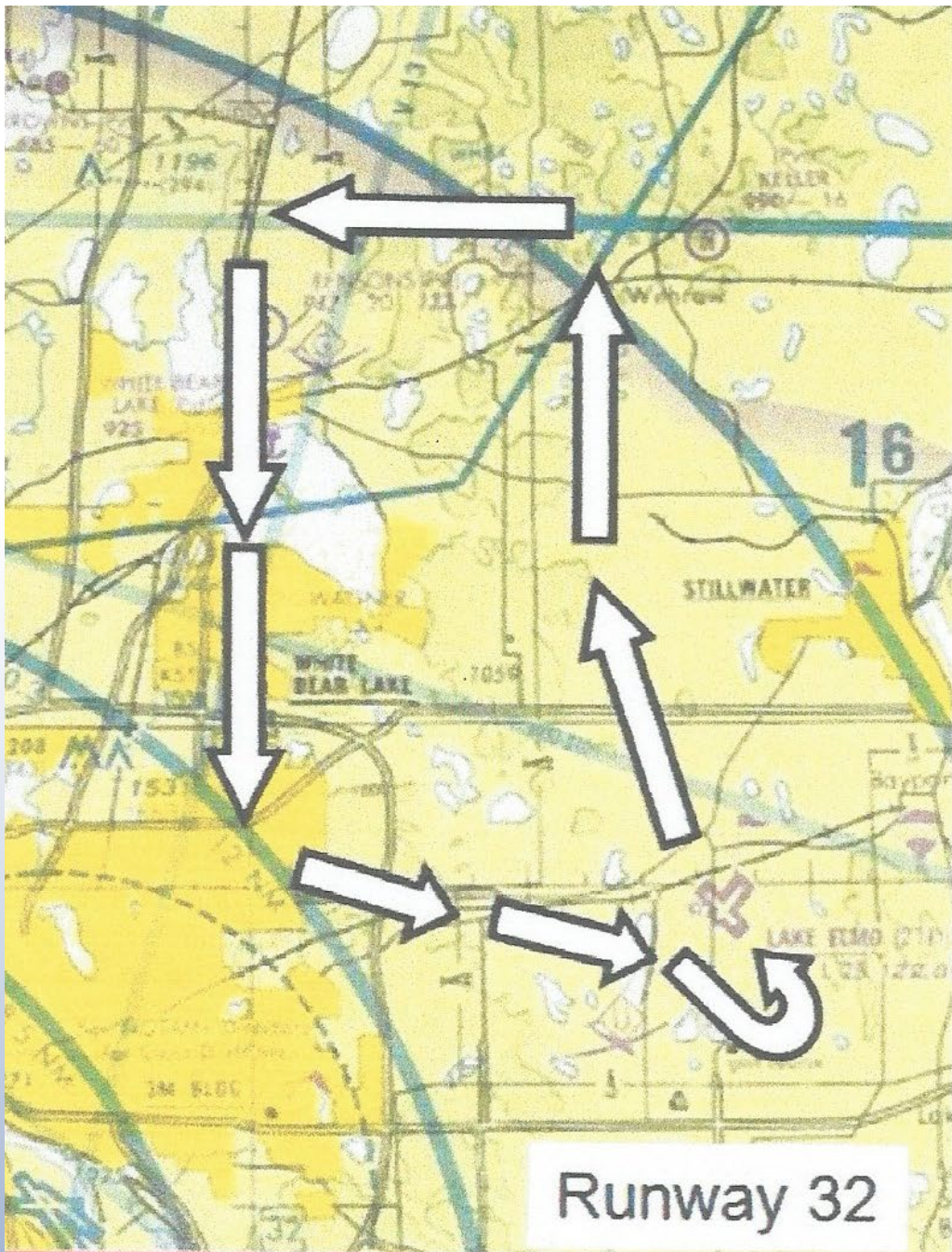
Founded in 1992, the EAA Young Eagles program is dedicated to giving youth ages 8–17, an opportunity to go flying in a general aviation airplane.

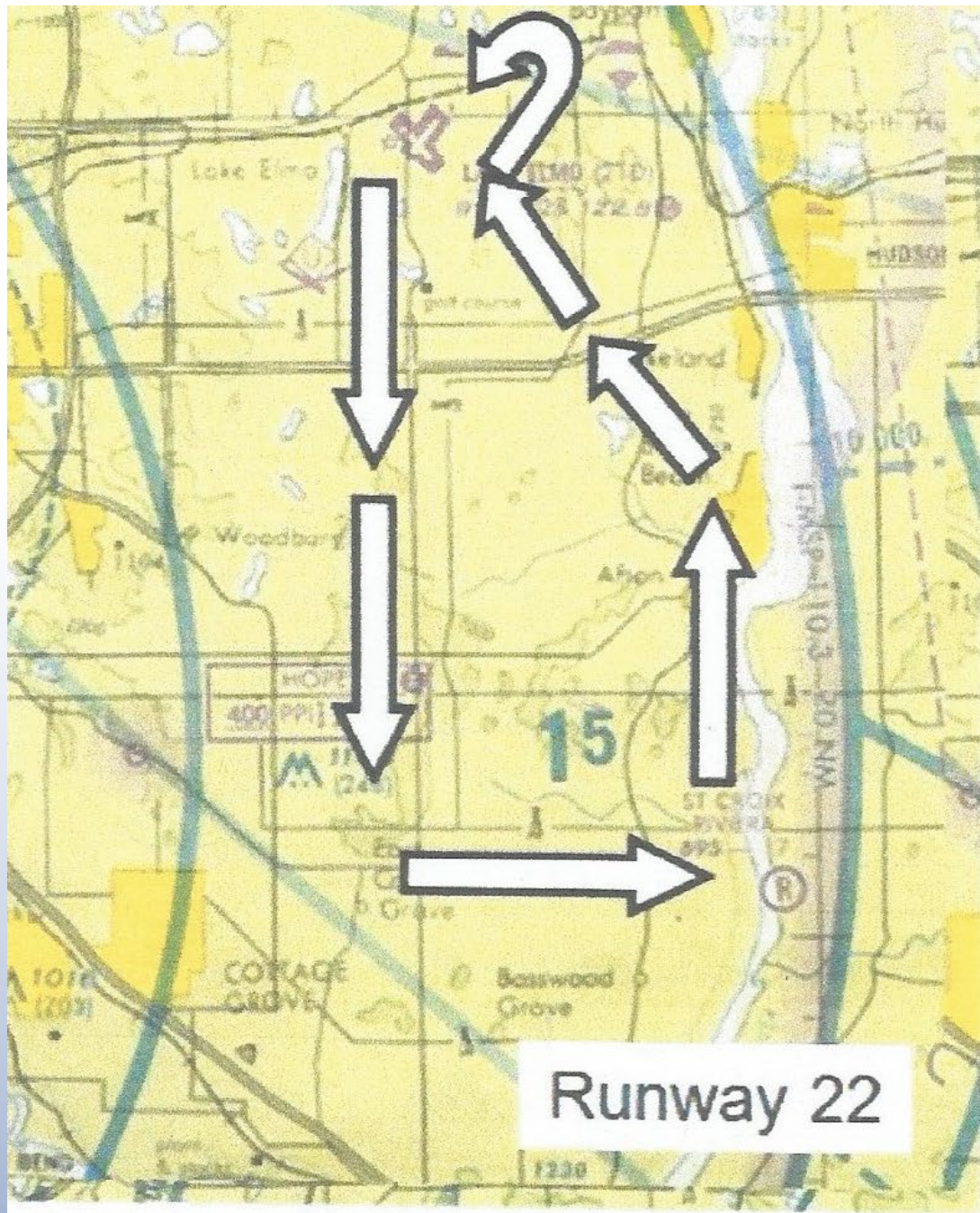
These flights are offered free of charge and are made possible through the generosity of EAA member volunteers.



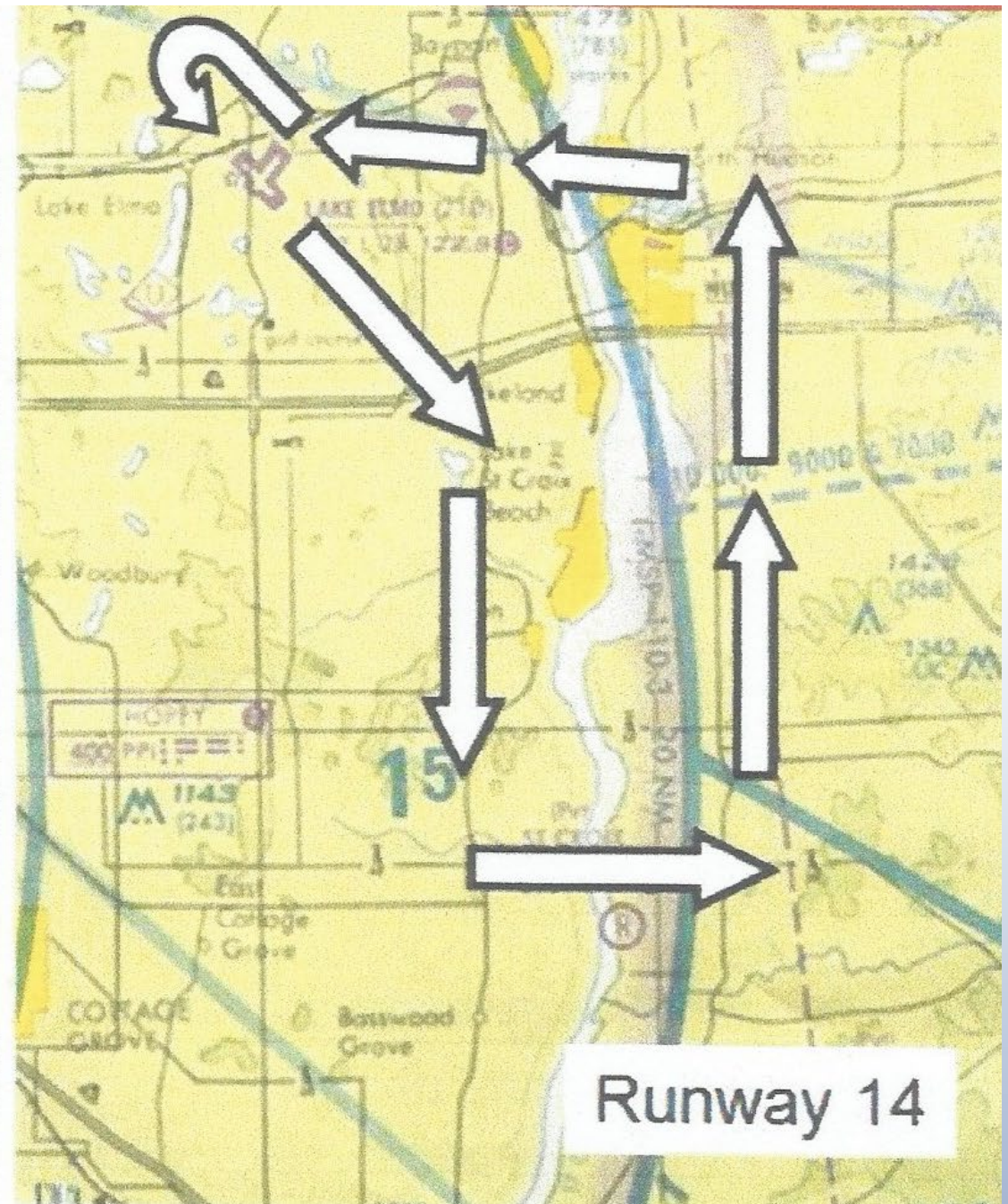








Runway 22



Runway 14



TOMAS ICENOGLE, CFI

**FLIGHT TRAINING PROCESS &
IMPORTANCE OF AVIATION**



Minneapolis ▲ **Saint Paul**
INTERNATIONAL AIRPORT

mssp

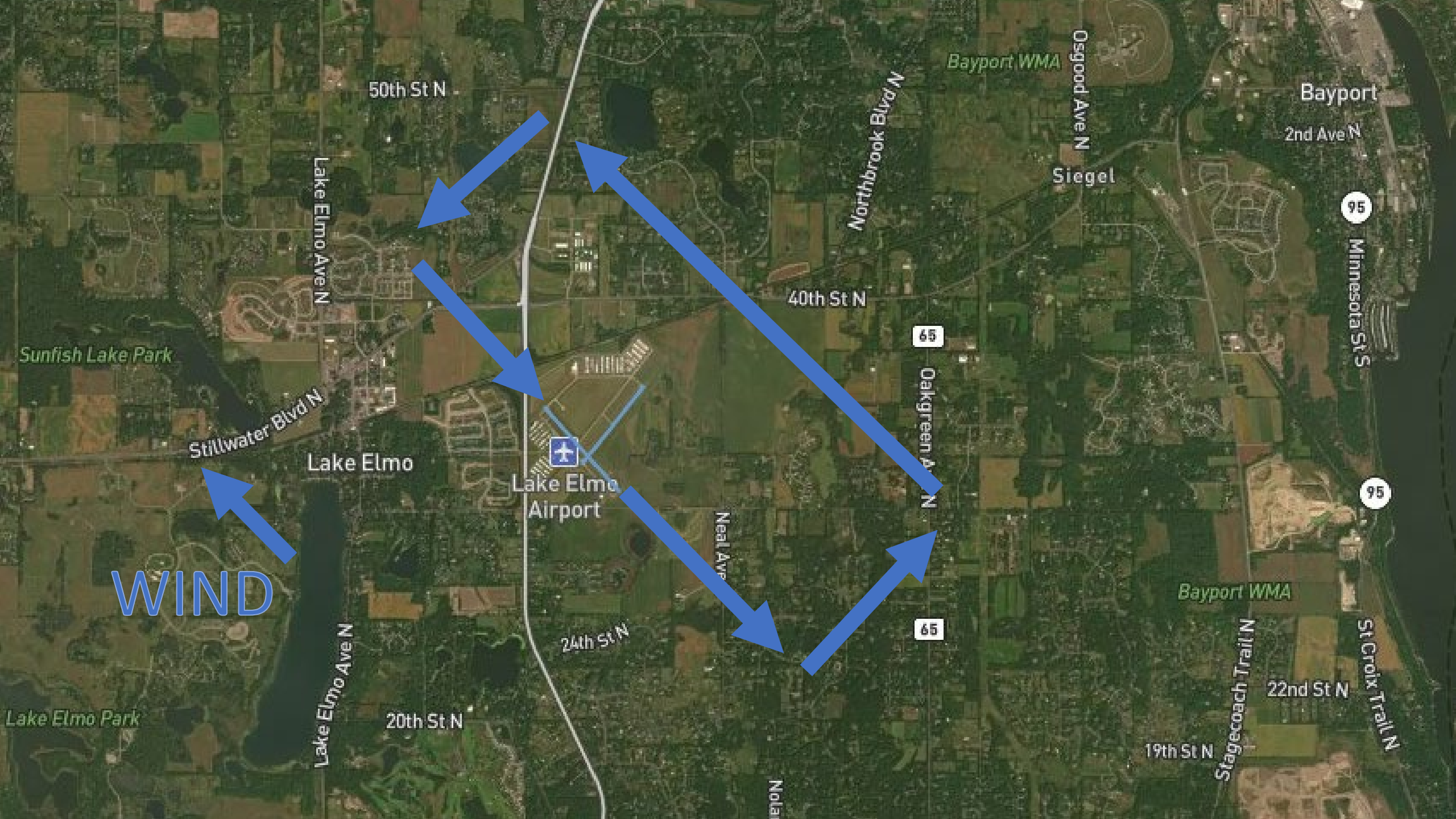
HOW MANY OF
YOU HAVE
FLOWN OUT OF
MSP?

Each Pilot: 1,500 hours of training

Lake Elmo Airport

- ▶ Traffic Pattern
- ▶ What Aviation Brings
- ▶ Community of General Aviation
- ▶ Flight Training





WIND

50th St N

Lake Elmo Ave N

Northbrook Blvd N

Bayport WMA

Osgood Ave N

Bayport

2nd Ave N

95

Minnesota St S

Sunfish Lake Park

40th St N

Stillwater Blvd N

Lake Elmo

65

Oakgreen Ave N

95

Lake Elmo Airport

Neal Ave

Bayport WMA

WIND

24th St N

65

Lake Elmo Park

20th St N

Lake Elmo Ave N

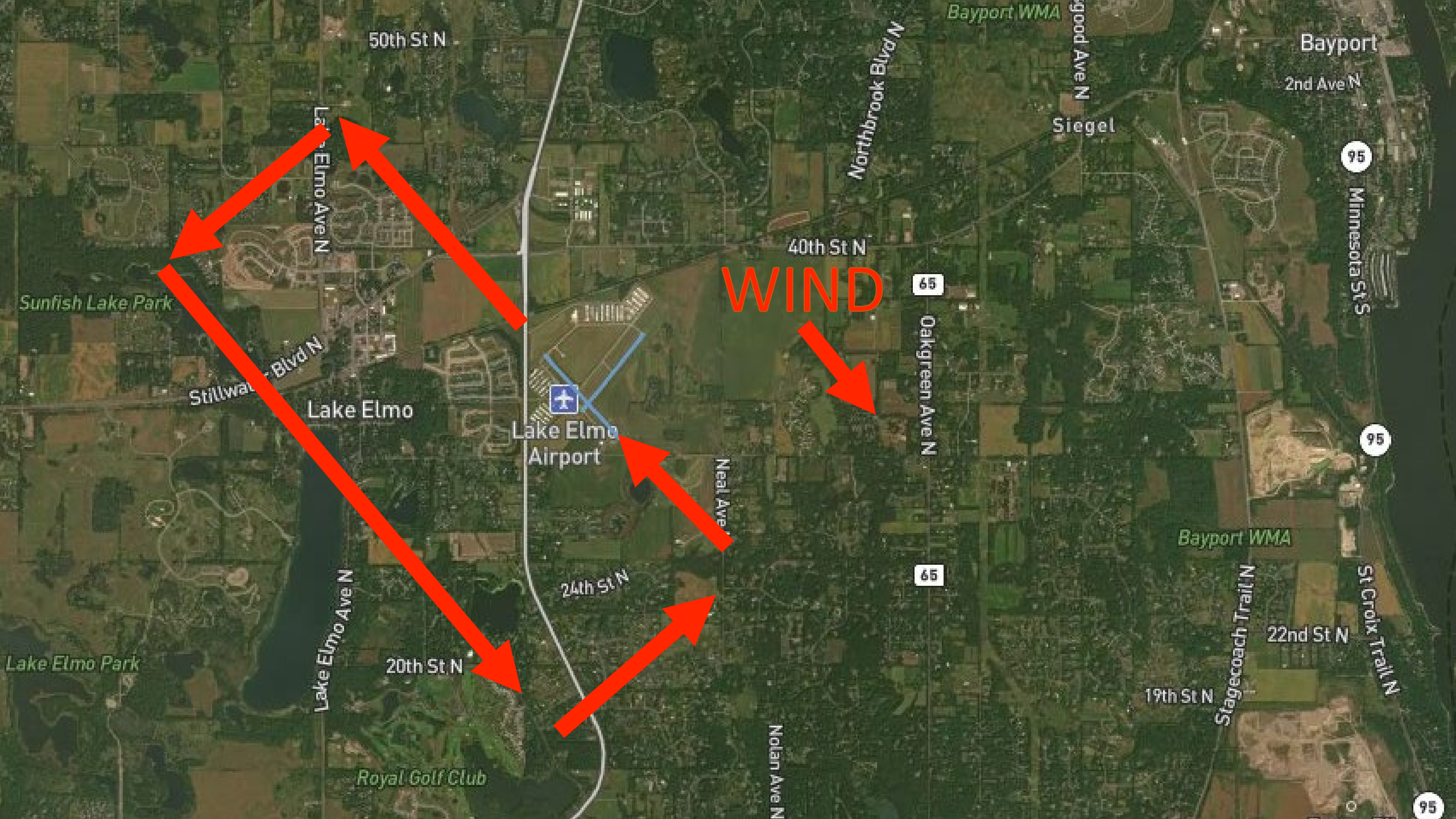
Nola

19th St N

Stagecoach Trail N

22nd St N

St Croix Trail N



WIND

50th St N

40th St N

24th St N

20th St N

22nd St N

19th St N

Lake Elmo Ave N

Stillwater Blvd N

Lake Elmo

Lake Elmo Airport

Neal Ave N

65

65

95

95

95

Bayport

2nd Ave N

Siegel

Bayport WMA

Good Ave N

Northbrook Blvd N

Bayport WMA

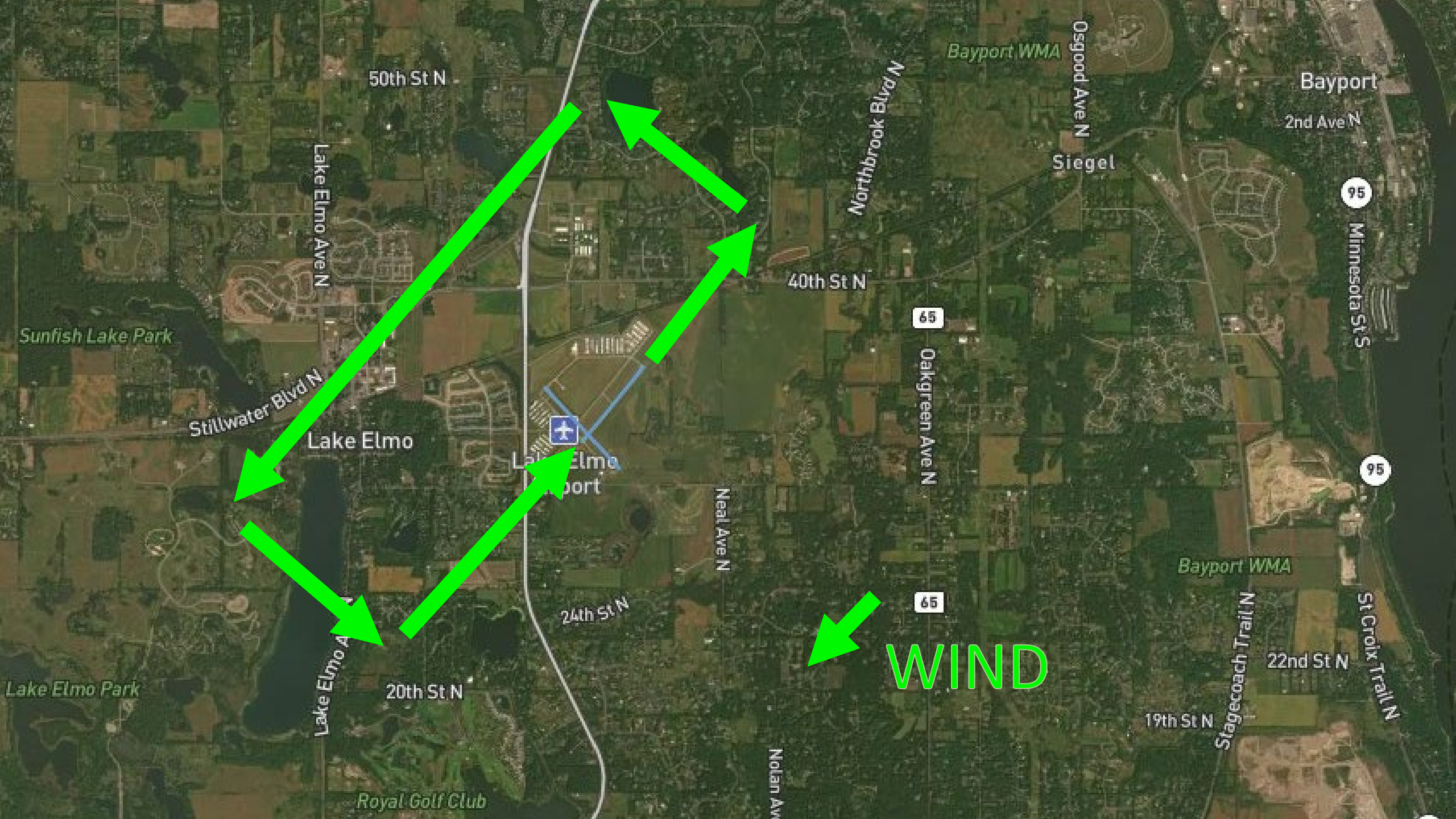
Stagecoach Trail N

St Croix Trail N

Sunfish Lake Park

Lake Elmo Park

Royal Golf Club



50th St N

Lake Elmo Ave N

Stillwater Blvd N

Lake Elmo

Lake Elmo

24th St N

20th St N

Lake Elmo Ave N

Royal Golf Club

Northbrook Blvd N

40th St N

65

Oakgreen Ave N

Neal Ave N

65

Nolan Ave

Bayport WMA

Osgood Ave N

Siegel

Bayport

2nd Ave N

95

Minnesota St S

95

Bayport WMA

Stagecoach Trail N

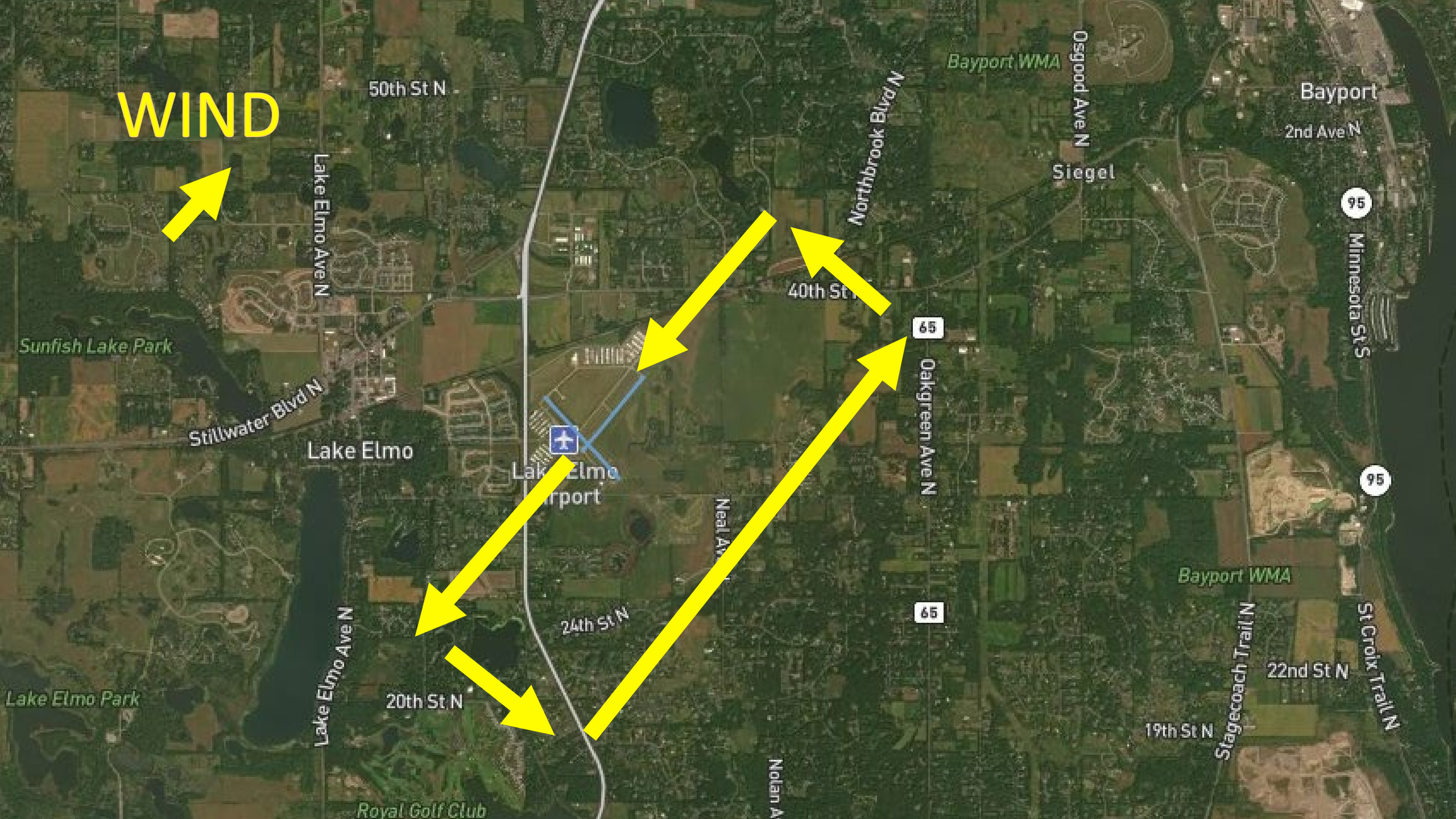
22nd St N

19th St N

St Croix Trail N

WIND

WIND



50th St N

Lake Elmo Ave N

Sunfish Lake Park

Stillwater Blvd N

Lake Elmo

Lake Elmo Airport

40th St N

Northbrook Blvd N

65

Oakgreen Ave N

Bayport WMA

Siegel

Osgood Ave N

Bayport

2nd Ave N

95

Minnesota St S

95

Bayport WMA

Lake Elmo Ave N

24th St N

65

Neal Ave N

Nolan A

Stagecoach Trail N

22nd St N

St Croix Trail N

20th St N

19th St N

Royal Golf Club

What Aviation Brings

- ▶ Transportation
- ▶ Destination for pilots nationwide
- ▶ Brings business
- ▶ Recreation



Community of General Aviation

- ▶ Comparison to golf course/supper club
- ▶ Positive hobby
- ▶ Continued Learning
- ▶ Positive Community
- ▶ Sense of belonging



Teaching the Next Generation of Pilots

- ▶ Flight Training
- ▶ Benefits of Lake Elmo Aero
- ▶ Watching Eye
- ▶ Additional Services
- ▶ Maintenance
- ▶ Fuel





**“A MILE OF
HIGHWAY WILL
TAKE YOU A MILE,
BUT A MILE OF
RUNWAY WILL
TAKE YOU
ANYWHERE”**



Lake Elmo Airport
ADVISORY COMMISSION
LEAAC

Airport Manager Update

Phil Tiedeman



Airport Manager Update

- ✓ Hangar Inspections
- ✓ Hangar Development
- ✓ Lease Renewals
- ✓ Noise Abatement Plan

✪ Lake Elmo Airport | K21D | Pilot Guide

21D IS A NOISE SENSITIVE AIRPORT

Avoid Noise Sensitive Residential Areas When Possible

Pilot Information and Noise Abatement Plan (NAP)
A voluntary Noise Abatement Plan (NAP) for 21D is the result of cooperative efforts between airport users and pilots, surrounding communities, and the Metropolitan Airports Commission.

NOTE: FAA regulations and requirements take precedence over noise abatement procedures. **RECOMMENDED PROCEDURES ARE NOT INTENDED TO CONFLICT WITH INSTRUCTIONS FROM ATIS OR THOSE THAT ARE THE EXCLUSIVE AUTHORITY OF THE FAA.**

Preferred Runway Use
Runway 22 is the calm wind runway. Communicate runway use intentions on UNCOM/CTAF.

Nighttime Measures

- Flights are asked to avoid operating during nighttime hours (2200 – 0700 local) if possible.
- Training flights are discouraged between the hours of 2400 – 0700 local.
- Intersection takeoffs are discouraged at all times, and prohibited from 2200-0700 local.
- Any aircraft not meeting 14 CFR Part 36 is prohibited between 2200 – 0700 local.

Traffic Pattern Procedures
The following procedures shall be set in the 21D traffic pattern:

- The traffic pattern altitude at 21D is 2000 feet.
- Multiple training events by target pattern are prohibited.
- Keep traffic pattern as close to our preferred runway as possible.
- When departing the traffic pattern, avoid overflying residential areas; preferred departure routes if used in map.

For more information, contact:
612-725-6327
www.mnacoisa.com/pilots
Revision Date: April 2019

FIELD ELEVATION: 923

TPA: 1923 (1800)

RUNWAY INFORMATION

RWY 14-32 — 2850' x 75'

- RWY 14: REG. Left th. Road.
- RWY 32: REG. PAV - 3.0° (an right), Left th. Road, base.
- RWY 4-22 — 2460' x 75'
- No lights
- RWY 4: Left th. Taxes.
- RWY 22: Left th.

COMMUNICATIONS

CTAF: 122.8 **UNCOM:** 122.8

WX AWOS-3: 130.675

WX AWOS PHONE: 621/ 776-5848

MINNEAPOLIS APP/ISD: 121.3

CLEARANCE DELIVERY: 118.625

DEPARTURE PROCEDURES

- Intersection takeoffs at the airport are discouraged at all times.
- Departing aircraft should climb to 500 feet up before initiating a turn. Avoid overflying noise sensitive residential areas if possible.
- Gain as much altitude as possible before overflying residential areas.
- Follow NGAIA Noise Abatement Departure Procedures recommended below.

ARRIVAL PROCEDURES

- On approach to 21D, remain at Traffic Pattern Altitude or higher until descending via PAR/VIS if available. Remain at an altitude at or above the approach slope indicator as much as possible.
- Stop and Go landings are NOT permitted.
- Follow NGAIA Approach and Landing Procedures recommended below.

HELICOPTER PROCEDURES

- Helicopter training in the traffic pattern area is prohibited from 2200 – 0800 local.
- Avoid flow of fixed wing aircraft.
- Avoid low-level training and repetitive activity over residential areas whenever possible.

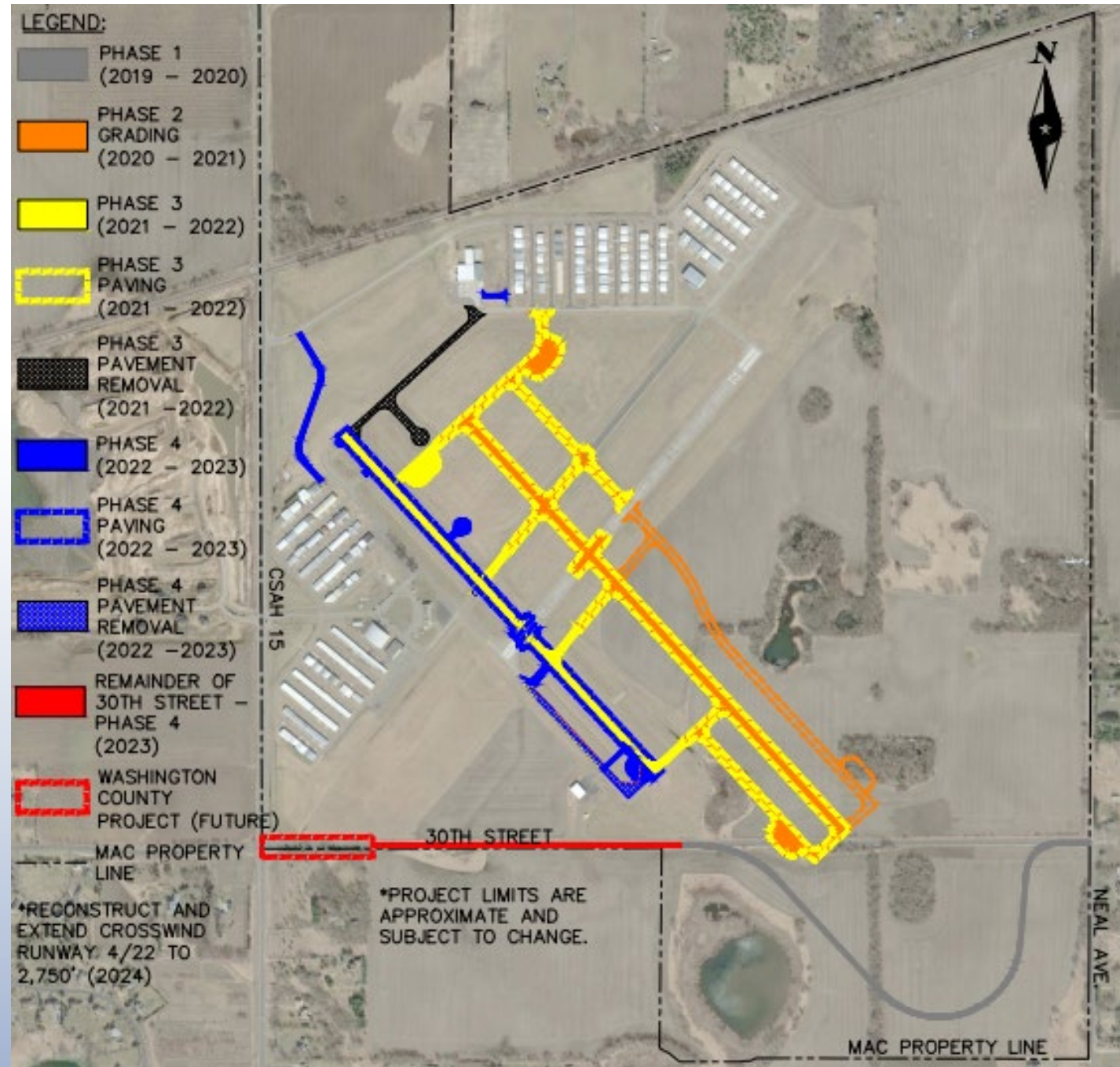
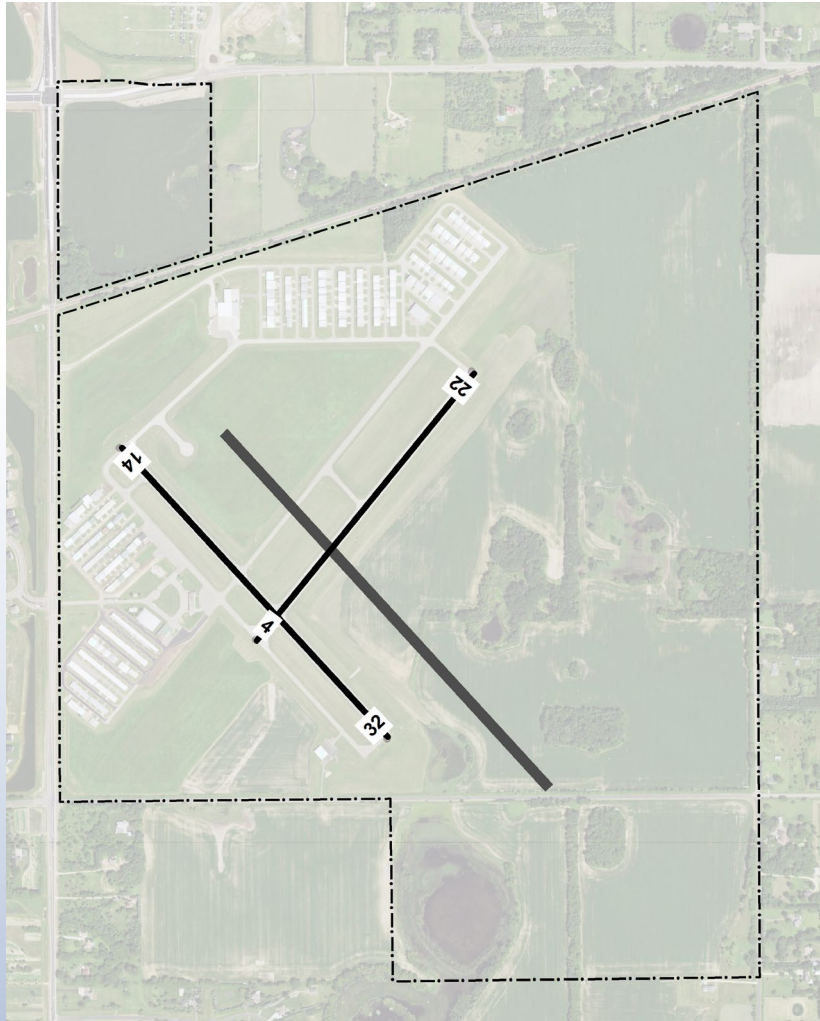
MAINTENANCE RUN-UPS

To minimize the amount of noise projected toward adjacent residential areas:

- Engine tests and maintenance run-ups should be performed in the designated areas only (see blue areas on map). Exceptions must be approved by the airport manager.
- Engine tests and maintenance run-ups are prohibited between 2200 and 0700 local time.
- Aircraft will be parked on a heading of 180 to 200 degrees whenever practical.



Construction



2nd Grade Tours



Q1 2022 Aircraft Operations & Complaints



Website Resources:

metroairports.org/community-connection

The screenshot displays the website's header with a dark blue navigation bar containing links for NEWS, EVENTS, DOCUMENTS & RESOURCES, FAQs, and CONTACT US. Below this is a white navigation bar with the Metro Airports logo on the left and links for About Us, Our Airports, Doing Business, and Community Connection. A search bar is located on the right side of the white navigation bar. The main content area features a large photograph of an outdoor community event. In the foreground, a yellow tractor is partially visible, with a blue banner featuring the Metro Airports logo attached to it. A group of people, including children, are gathered around a large, colorful mural. In the background, a blue tent with the Metro Airports logo and the text "Our Vision: Delivering your best airport experience" is set up. The bottom of the page has a white footer with the text "QUICK LINKS:" followed by links for Aircraft Noise, Economic Impact, Public Safety, and Public Records Requests.

NEWS EVENTS DOCUMENTS & RESOURCES FAQs CONTACT US

MAC METRO AIRPORTS COMMUNITY CONNECTION

About Us Our Airports Doing Business Community Connection

SEARCH

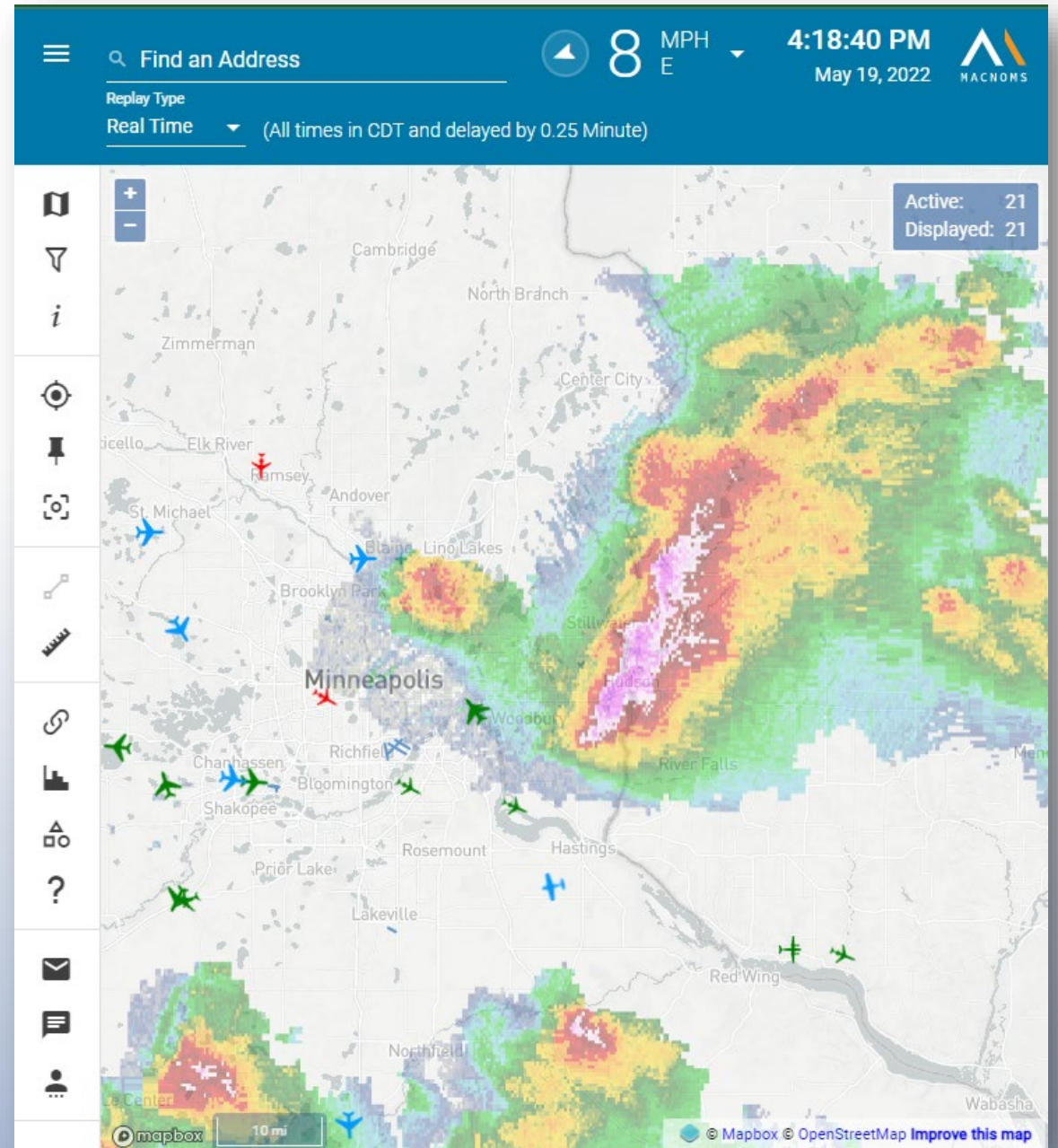
Community Connection

Our Vision: Delivering your best airport experience

QUICK LINKS: [Aircraft Noise](#) [Economic Impact](#) [Public Safety](#) [Public Records Requests](#)

MAC FlightTracker:

macnoms.com



Interactive Reports:

metroairports.org/community-connection/aircraft-noise

Home

STP

FCM

ANE

MIC

LVN

21D

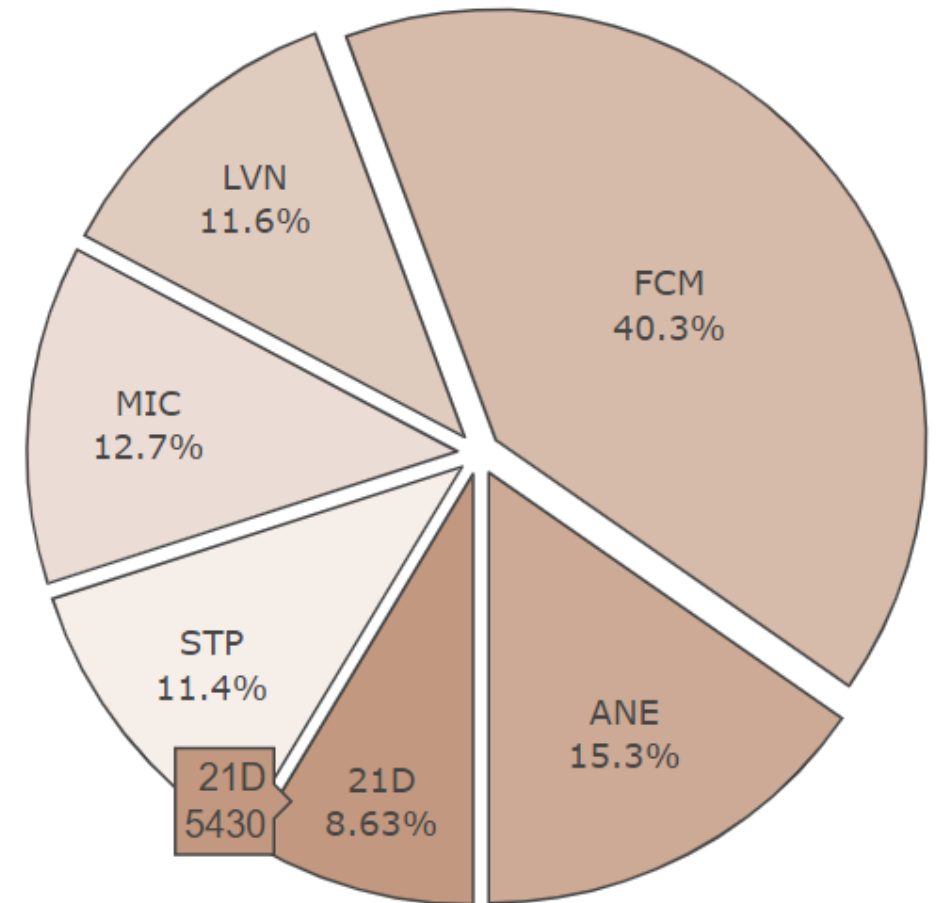
MAC Reliever Interactive Reports



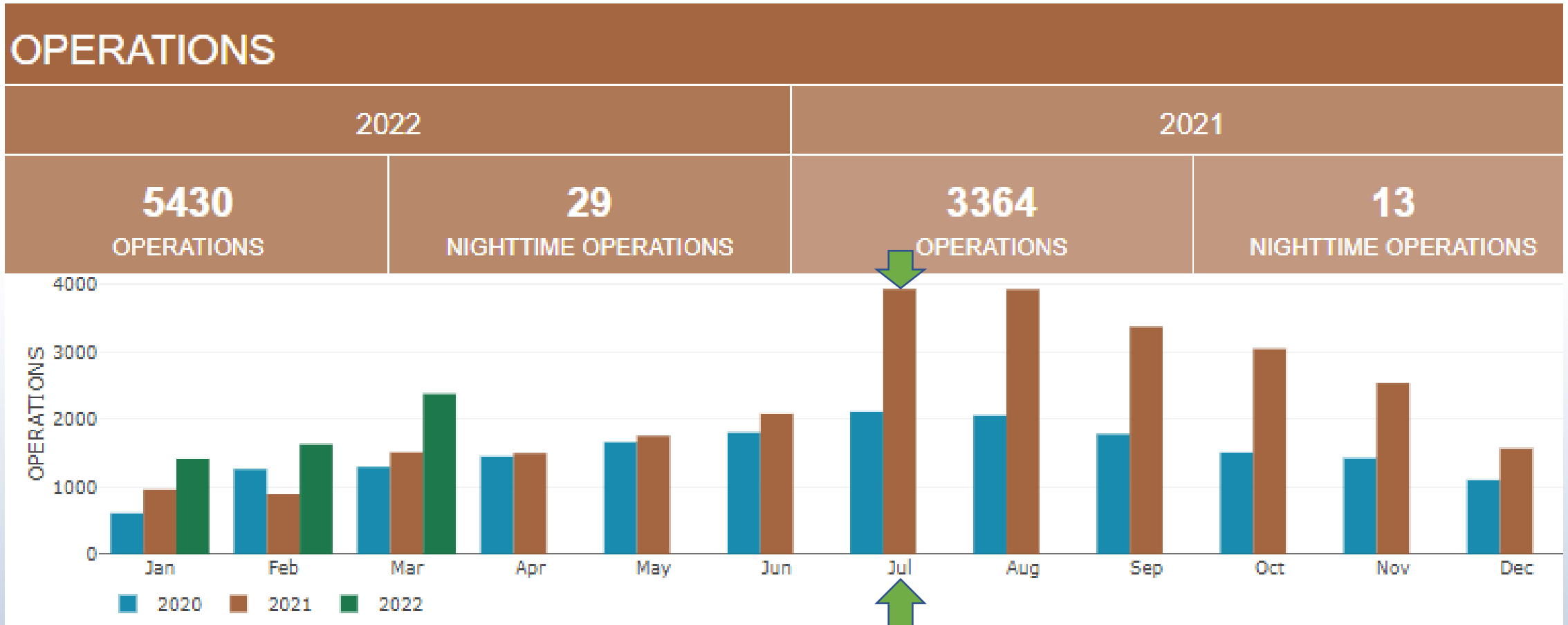
Q1 2022 Aircraft Operations

- ✓ Flight tracking data (MACNOMS) are used to determine the number of takeoffs and landings at 21D.
- ✓ A change in data processing effective July 1, 2021 now reflects more takeoffs and landings at 21D. Before the change, each flight track was counted as one takeoff and/or one landing even when the flight track included multiple takeoffs and landings.

AIRCRAFT OPERATIONS



Q1 2022 Aircraft Operations

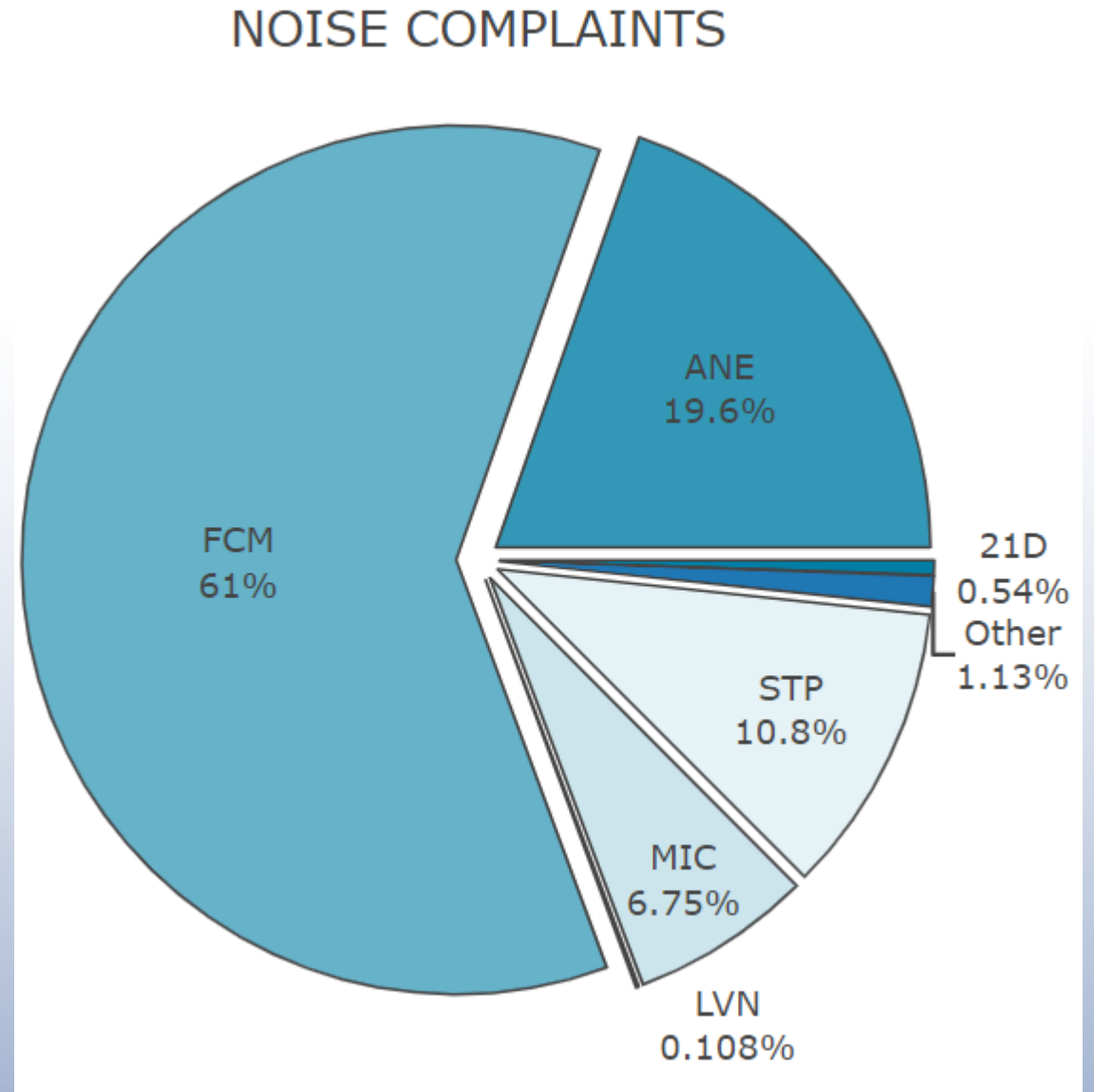


NOTE: Green arrows highlight start of new data processing. Beginning on July 1, 2021, the MACNOMS methodology for counting operations was updated to more accurately reflect total aircraft departures or arrivals at MAC airports.

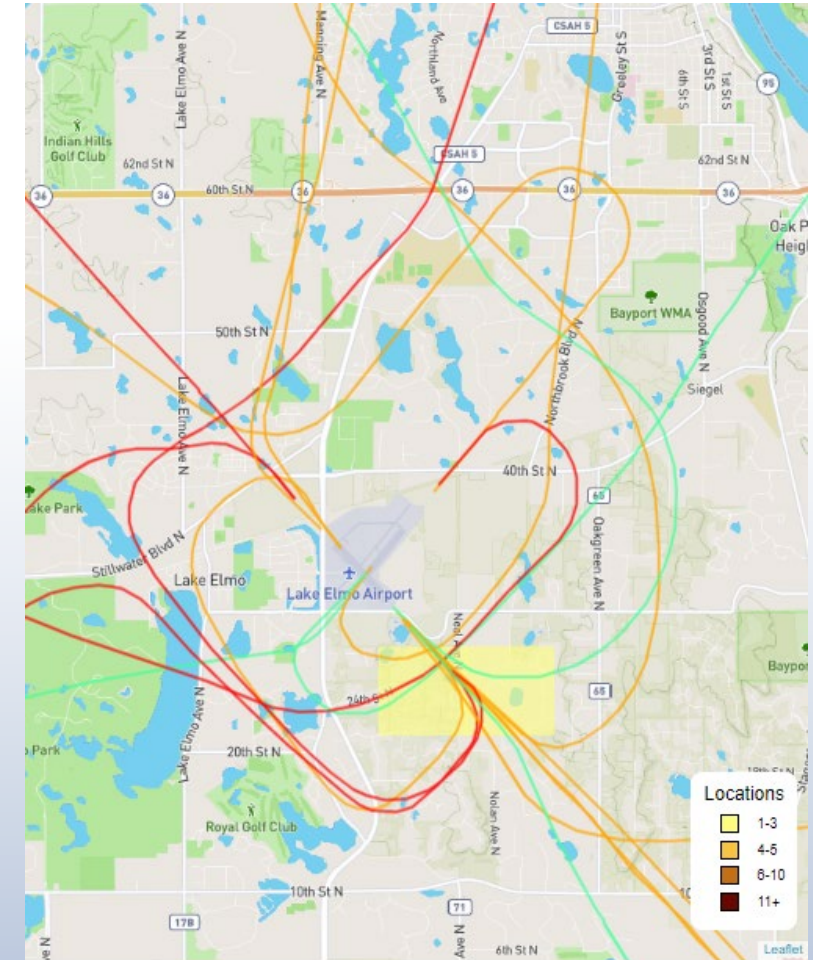
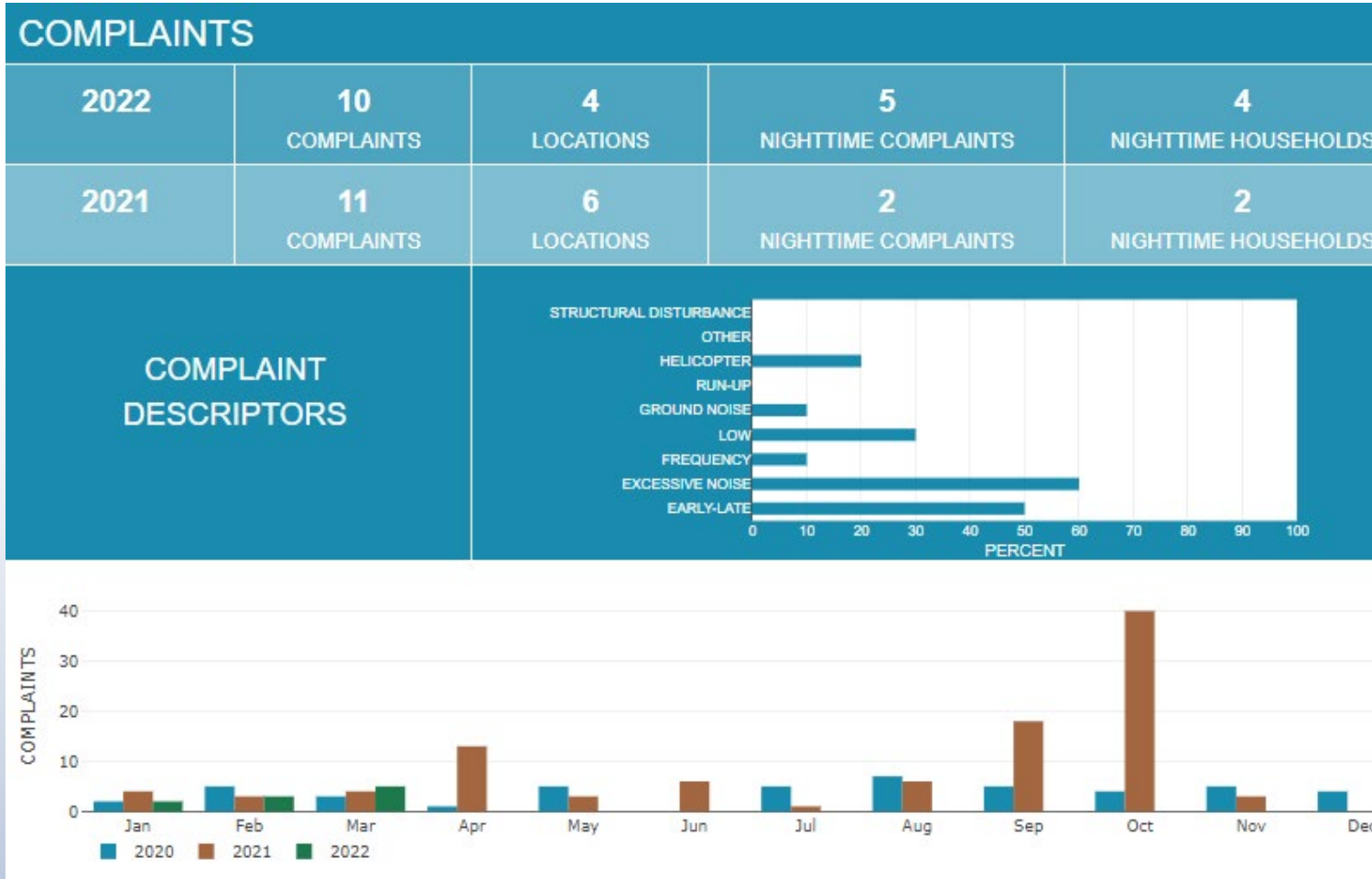


Q1 2022 Aircraft Noise Complaints

- ✓ Complaints are received through a 24-hour hotline, website account, email, and in-person.
- ✓ Complaints are correlated to specific flight activity based on details provided by the customer.
- ✓ Responses to complaints are as requested.
- ✓ Details are used for analysis.



Q1 2022 Aircraft Noise Complaints: 21D



Airport Tour and Grand Opening Discussion



Public Comment

Members of the public are welcome to share their remarks with the Commission.

Please state your name and address

Limit remarks to 3 minutes



Member Comments



Set Next Meeting Date Options:

May

Su	Mo	Tu	We	Th	Fr	Sa
1	2	3	4	5	6	7
8	9	10	11	12	13	14
15	16	17	18	19	20	21
22	23	24	25	26	27	28
29	30	31				

June

Su	Mo	Tu	We	Th	Fr	Sa
			1	2	3	4
5	6	7	8	9	10	11
12	13	14	15	16	17	18
19	20	21	22	23	24	25
26	27	28	29	30		

July

Su	Mo	Tu	We	Th	Fr	Sa
					1	2
3	4	5	6	7	8	9
10	11	12	13	14	15	16
17	18	19	20	21	22	23
24	25	26	27	28	29	30
31						

August

Su	Mo	Tu	We	Th	Fr	Sa
	1	2	3	4	5	6
7	8	9	10	11	12	13
14	15	16	17	18	19	20
21	22	23	24	25	26	27
28	29	30	31			

September

Su	Mo	Tu	We	Th	Fr	Sa
				1	2	3
4	5	6	7	8	9	10
11	12	13	14	15	16	17
18	19	20	21	22	23	24
25	26	27	28	29	30	

October

Su	Mo	Tu	We	Th	Fr	Sa
						1
2	3	4	5	6	7	8
9	10	11	12	13	14	15
16	17	18	19	20	21	22
23	24	25	26	27	28	29
30	31					

November

Su	Mo	Tu	We	Th	Fr	Sa
		1	2	3	4	5
6	7	8	9	10	11	12
13	14	15	16	17	18	19
20	21	22	23	24	25	26
27	28	29	30			

December

Su	Mo	Tu	We	Th	Fr	Sa
				1	2	3
4	5	6	7	8	9	10
11	12	13	14	15	16	17
18	19	20	21	22	23	24
25	26	27	28	29	30	31





Thank you for joining us!