

**Lake Elmo Airport**  
**ADVISORY COMMISSION**  
LEAAC

# Regular Meeting

November 28, 2022



# Goal & Purpose of LEAAC

The goal of the LEAAC is to further the general welfare of the community and the Lake Elmo Airport through minimizing or resolving problems created by the aircraft operations at the airport.

## PURPOSE:

1. advise the community and the Metropolitan Airports Commission with regard to all matters affecting the Lake Elmo Airport, the classification, rules and regulations supplied to the operation of the Airport and the development of lands adjacent to the Airport
2. cooperate with the Metropolitan Airports Commission staff in reviewing matters affecting the use and control of the Lake Elmo Airport
3. make recommendations to the Metropolitan Airports Commission regarding any proposal affecting the use or operations of Lake Elmo Airport



# Agenda

Welcome and Introductions  
Approval of Meeting Minutes  
LEAAC Accomplishments  
LEAAC Leadership  
Airport User Spotlight  
Airport Manager Update  
Aircraft Noise Complaint Trends  
Public Comment  
Member Perspectives  
Set LEEAAC meeting schedule



# Welcome & Introductions





# Action

## Approval of Meeting Minutes for 8/24/2022





# Information



# LEAAC Accomplishments

Lake Elmo Airport



ADVISORY COMMISSION

# LEAAC Meetings and Accomplishments

- Airport 101 (Airport Orientation)
- Flight Training Process Overview
- Noise 101
- Sound Monitoring Study
- Monitor developments on and off-airport
- Evaporator and Drainage Briefing
- Receive updates about land-use developments
- Receive updates about airport operations and noise complaints
- Airport Tour
- Runway 14/32 grand-opening
- Airport User Spotlights
- Experimental Aircraft Association Chapter 54 Young Eagles Program
- Recognition for Brad Latvala
- Airport Manager Updates
- Airport Security Briefing

## 2021-2022 Meetings:

May 26, 2021

August 25, 2021

December 1, 2021

February 23, 2022

May 25, 2022

August 24, 2022

November 28, 2022





# Information



# LEAAC Leadership

Lake Elmo Airport



ADVISORY COMMISSION



# Membership Roster

Public Representatives	Airport User Representatives
Ken Roberts	Luke Peterson: Co-Chair
Susan St. Ores	Marlon Gunderson
Mary McComber	Robyn Stoller
Rick Weyrauch	Keith Bergman
Tim Gladhill (Ted Kozlowski)	Jim Thomas
Gary Kriesel	Dag Selander
Baytown (TBD)	Jeff Morgan

# Information



# Airport User Spotlights

Lake Elmo Airport



ADVISORY COMMISSION





**Donaven**

Donoven grew up in Lake Elmo and always dreamed of flying. He was well acquainted with the airport and did his training there, earning his private pilot license 4 years ago.

Donovan flies a RV-8 which is a two-seat, low wing experimental-class airplane. He flies it a lot and put on nearly 900 hours in the past 4 years. He regularly flies cross country and can be found out at the airport most afternoons.

But one RV aircraft is not enough for Donaven! This summer he acquires a RV-3 (the blue low-wing single seat plane), which he put back together and is getting ready to fly.

Donaven really enjoys the convenience of Lake Elmo Airport and the comradery of the RV-aircraft pilot community at the airport because they help each other with various questions and operations of RV aircraft.





**Jen**

Jen is one of the Airframe & Powerplant mechanics working at Lake Elmo Aero. Growing up and now living within a couple miles of the airport, Jen got her start in aviation with pilot lessons at Lake Elmo Airport. Receiving her private pilot license in 2010, she was then hired on by Valter's Aviation (a precursor to Lake Elmo Aero) as part of the line staff.

But Jen was not content to be a pilot and work the line so in 2015 she went back to school for her A&P degree which allows her to work as an aircraft mechanic. After a brief stint working at Malibu Aero at Anoka County-Blaine Airport, she was thrilled to come back to 21D when Lake Elmo Aero bought Valter's Aviation.

Jen really enjoys how close she lives to work and the comradery at the Lake Elmo Aero shop is great!



# Information

# Airport Manager Update



# Construction

- Where we are today
- What we anticipate the next few years
- Future Hangar Development
- Winter Operations





# Information



# Aircraft Noise Complaint Trends

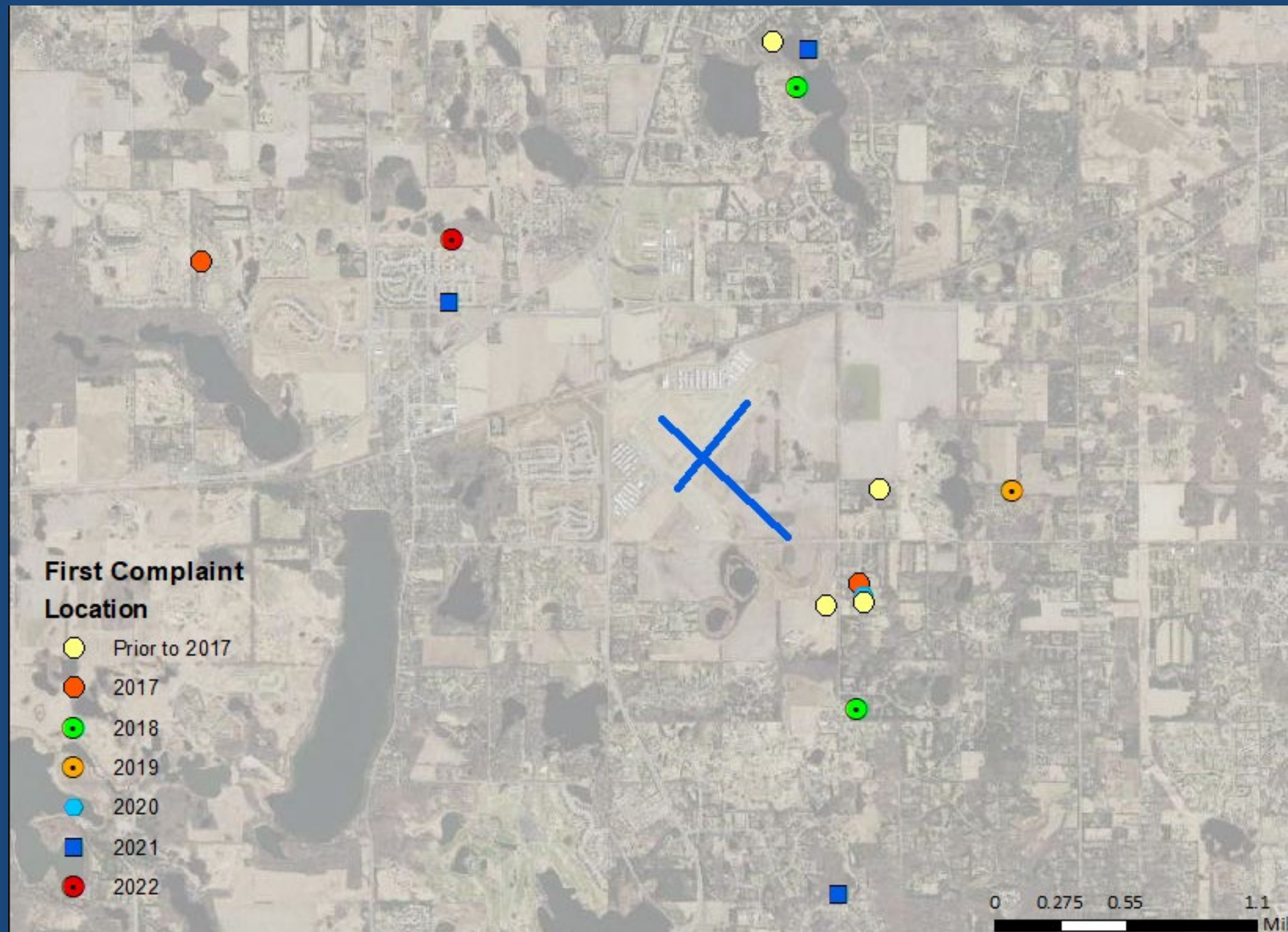
Lake Elmo Airport



ADVISORY COMMISSION



# Lake Elmo Airport Complaint Locations 2017-2022\*



- There are 426 complaints from 31 households located throughout the Twin Cities area
- Colors represent the first complaint year

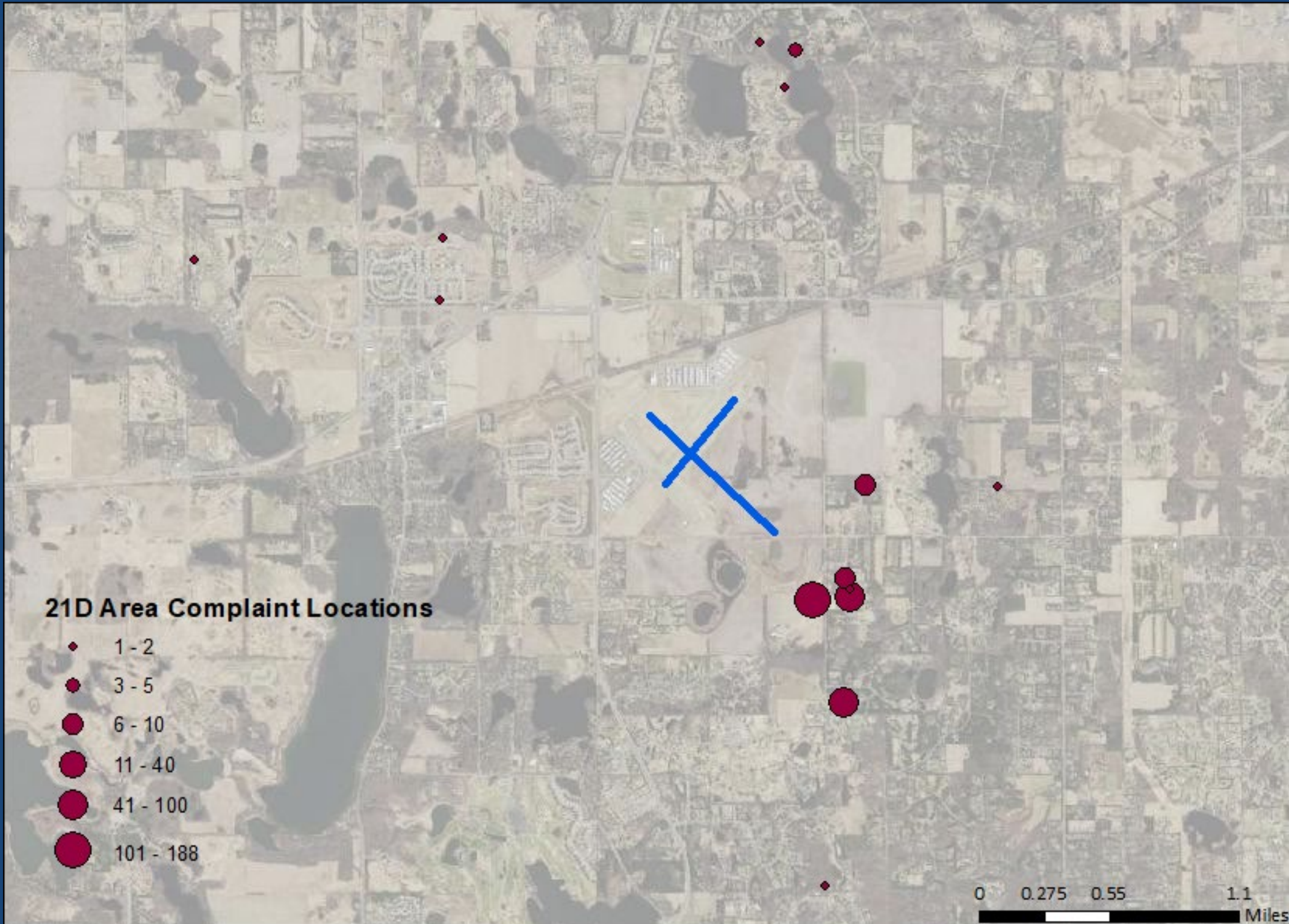
\*Based on data 2017-October 2022

# Lake Elmo Airport Complaints by City\*

City	2017	2018	2019	2020	2021	2022	Complaint Total	HH Total
BAYTOWN TOWNSHIP	2	2	1		2	1	8	4
BENTON TOWNSHIP					6		6	1
BROOKLYN PARK				16	3	1	20	1
EAST BETHEL						2	2	1
EDEN PRAIRIE	1	1		6	5		13	4
LAKE ELMO	1				1	1	3	3
MENDOTA HEIGHTS		6					6	1
MINNEAPOLIS	1	3	1	1		1	7	6
SAINT PAUL					2		2	1
SHOREWOOD			1				1	1
STILLWATER TOWNSHIP						2	2	1
SUNFISH LAKE						2	2	1
WEST LAKELAND TOWNSHIP	74	109	44	23	82	22	354	6
<b>Complaint Total</b>	<b>79</b>	<b>121</b>	<b>47</b>	<b>46</b>	<b>101</b>	<b>32</b>	<b>426</b>	<b>---</b>
<b>Household Total</b>	<b>7</b>	<b>10</b>	<b>6</b>	<b>7</b>	<b>10</b>	<b>9</b>	<b>---</b>	<b>31</b>

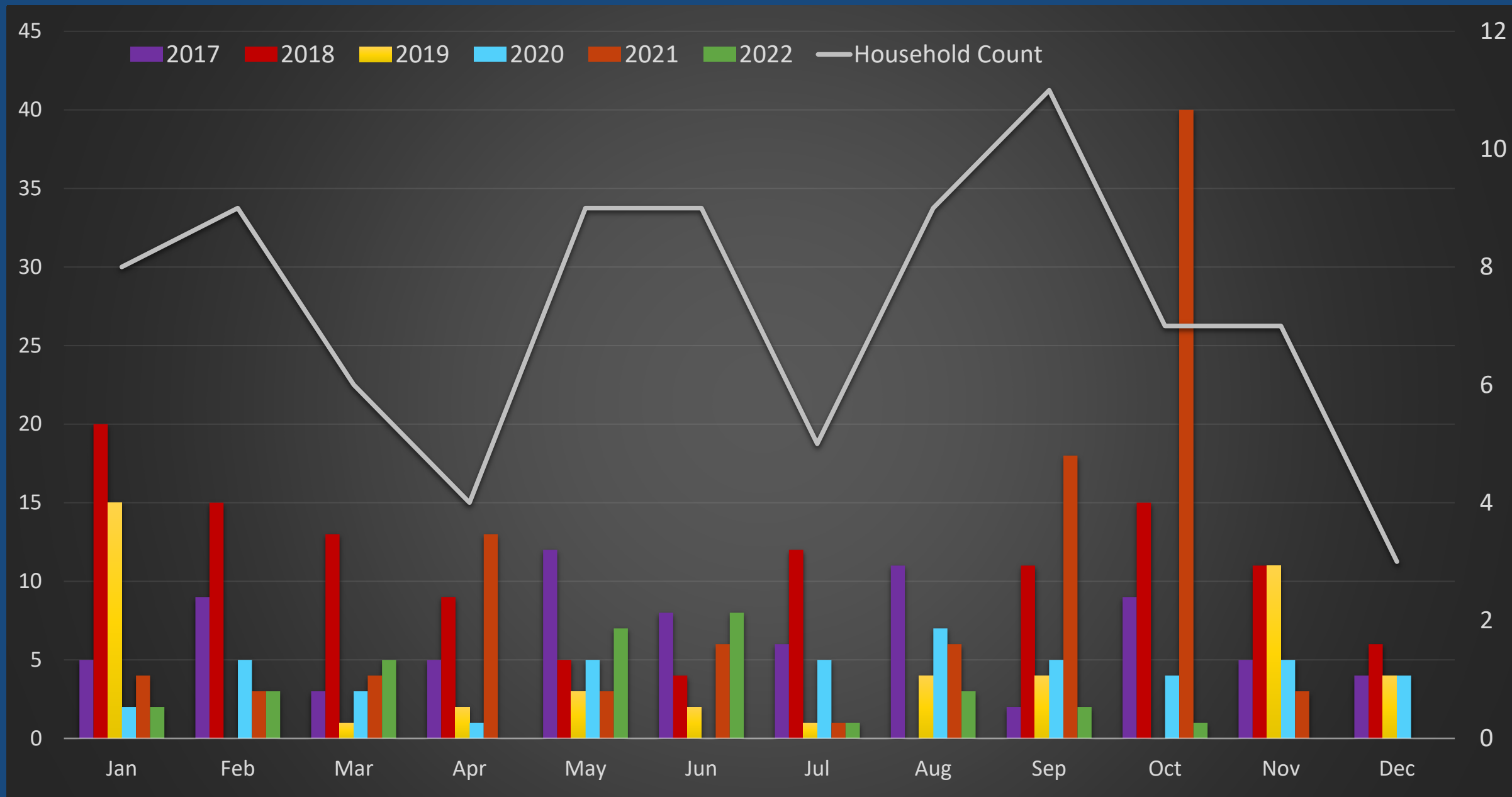
\*Based on data 2017-October 2022





- Dot Size Shows volume of Complaints per location
- Highest volume of complaints come from locations south of 21D

# Lake Elmo Airport Monthly Complaint Levels\*



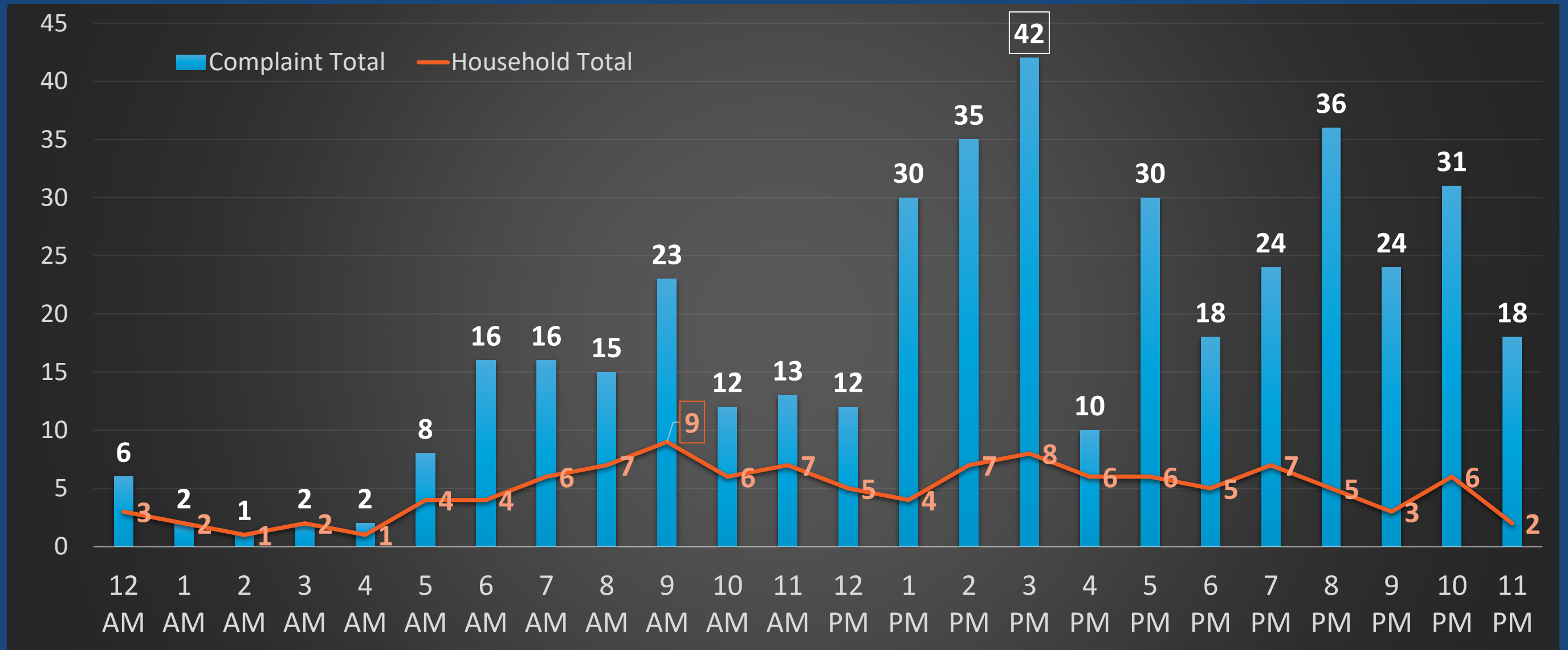
Year	Complaint Count
2017	79
<b>2018</b>	<b>121</b>
2019	47
2020	46
<b>2021</b>	<b>101</b>
2022*	32

\*Based on data 2017-October 2022

<https://customers.macnoms.com/reports/relievers.html>

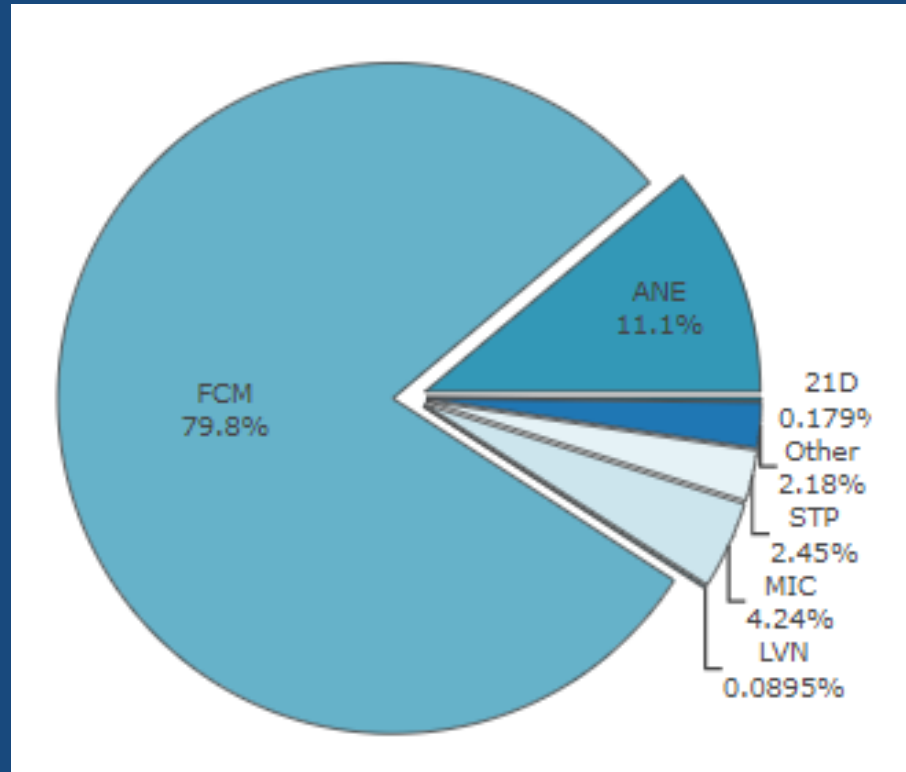


# Lake Elmo Airport Complaints per Hour\*

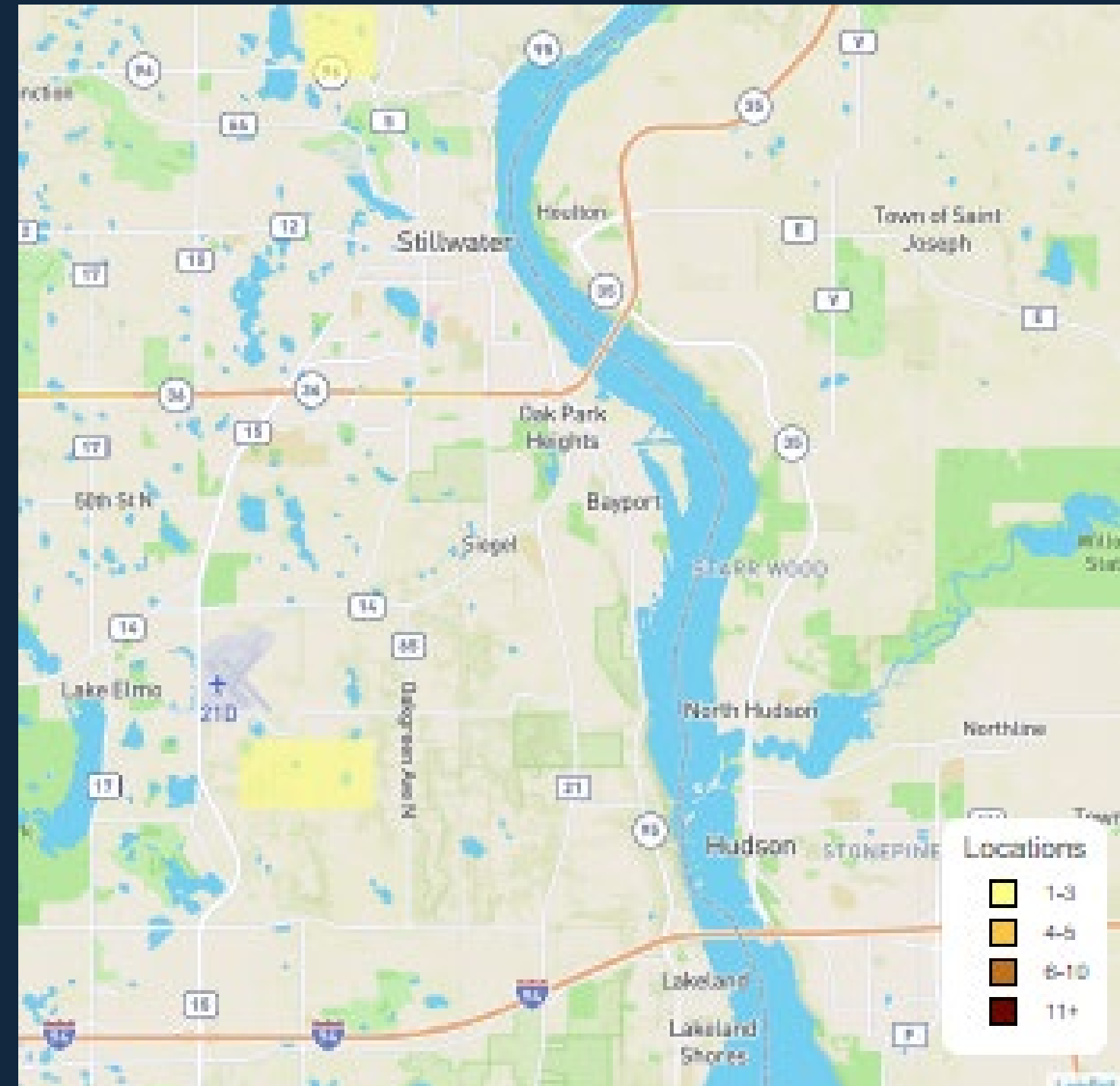


\*Based on data 2017-October 2022

# 2022 Q3 Complaints

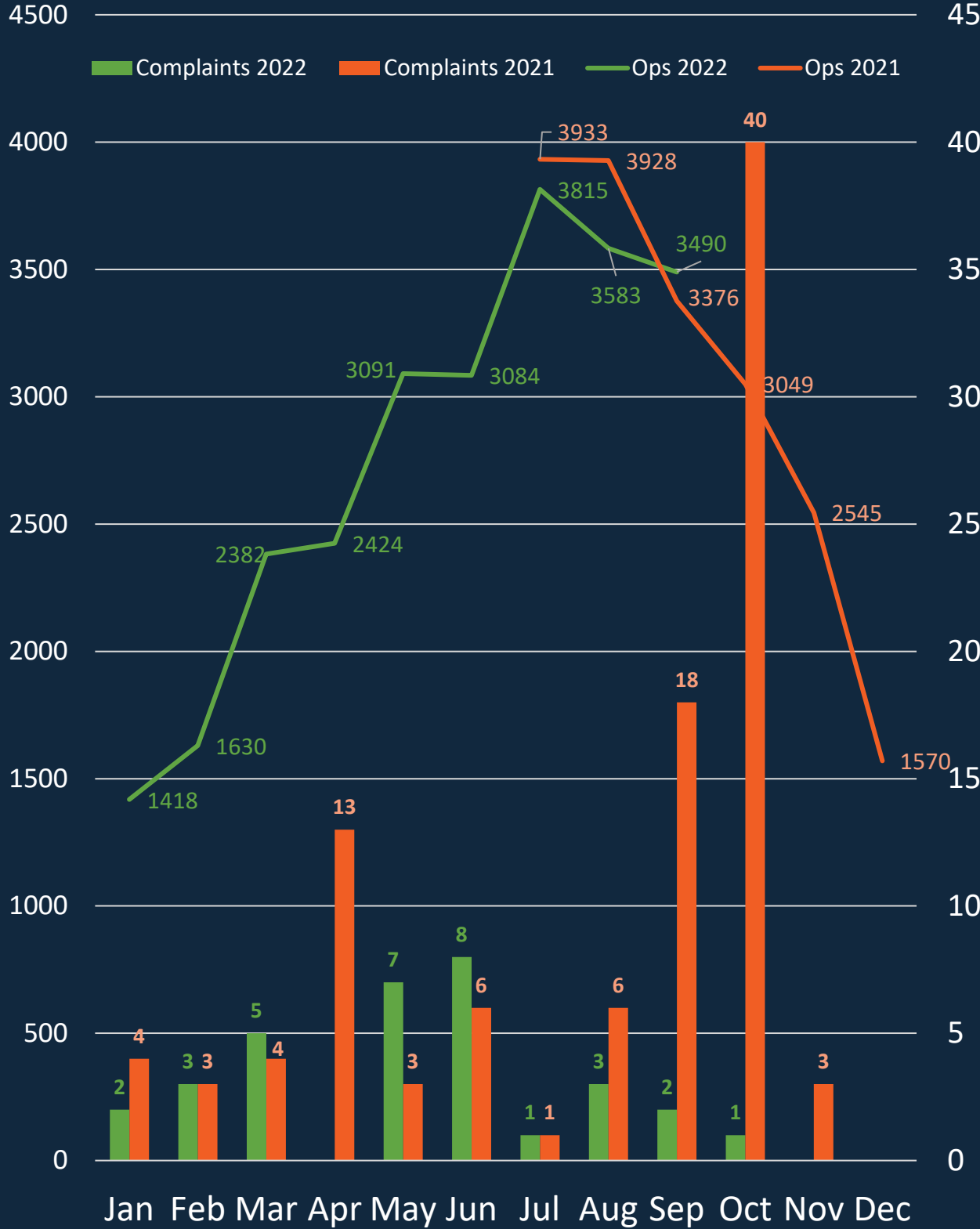


COMPLAINTS				
2022	6 COMPLAINTS	4 LOCATIONS	0 NIGHTTIME COMPLAINTS	0 NIGHTTIME HOUSEHOLDS
2021	25 COMPLAINTS	4 LOCATIONS	7 NIGHTTIME COMPLAINTS	3 NIGHTTIME HOUSEHOLDS

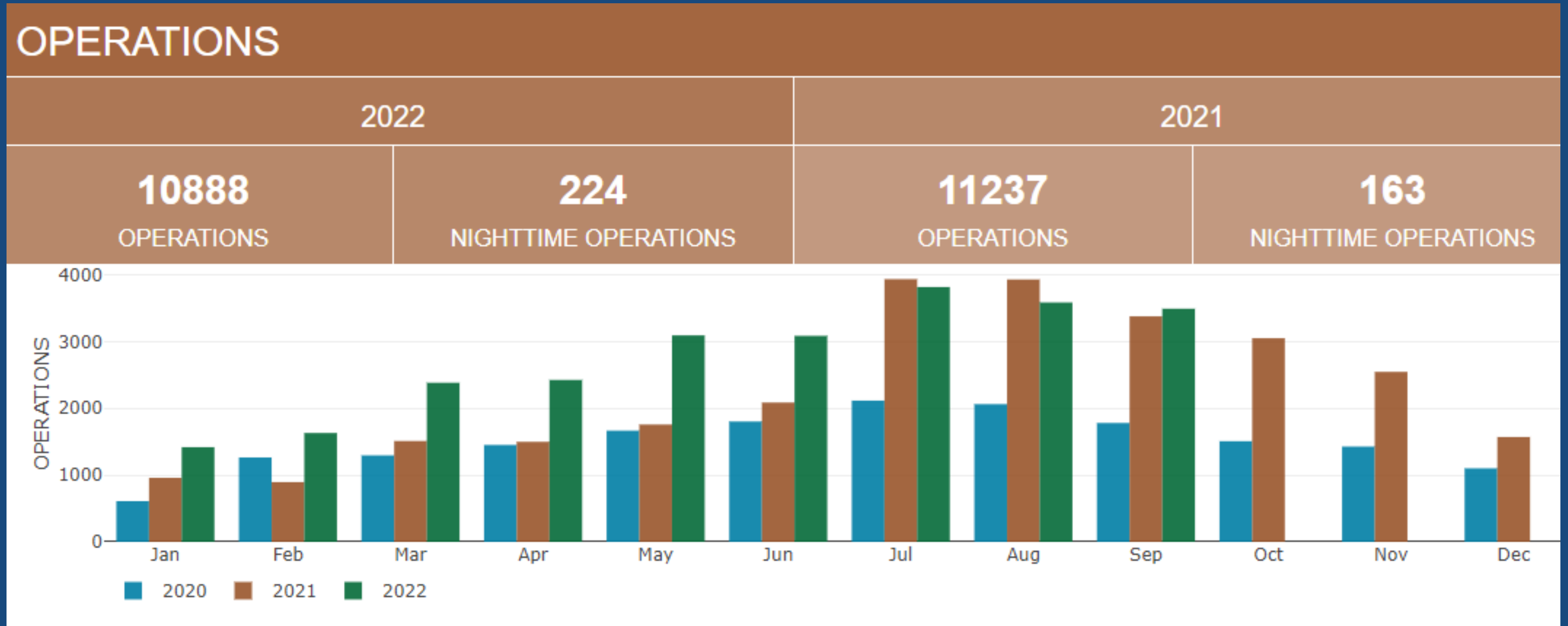




# Aircraft Operations Correlated with Complaints



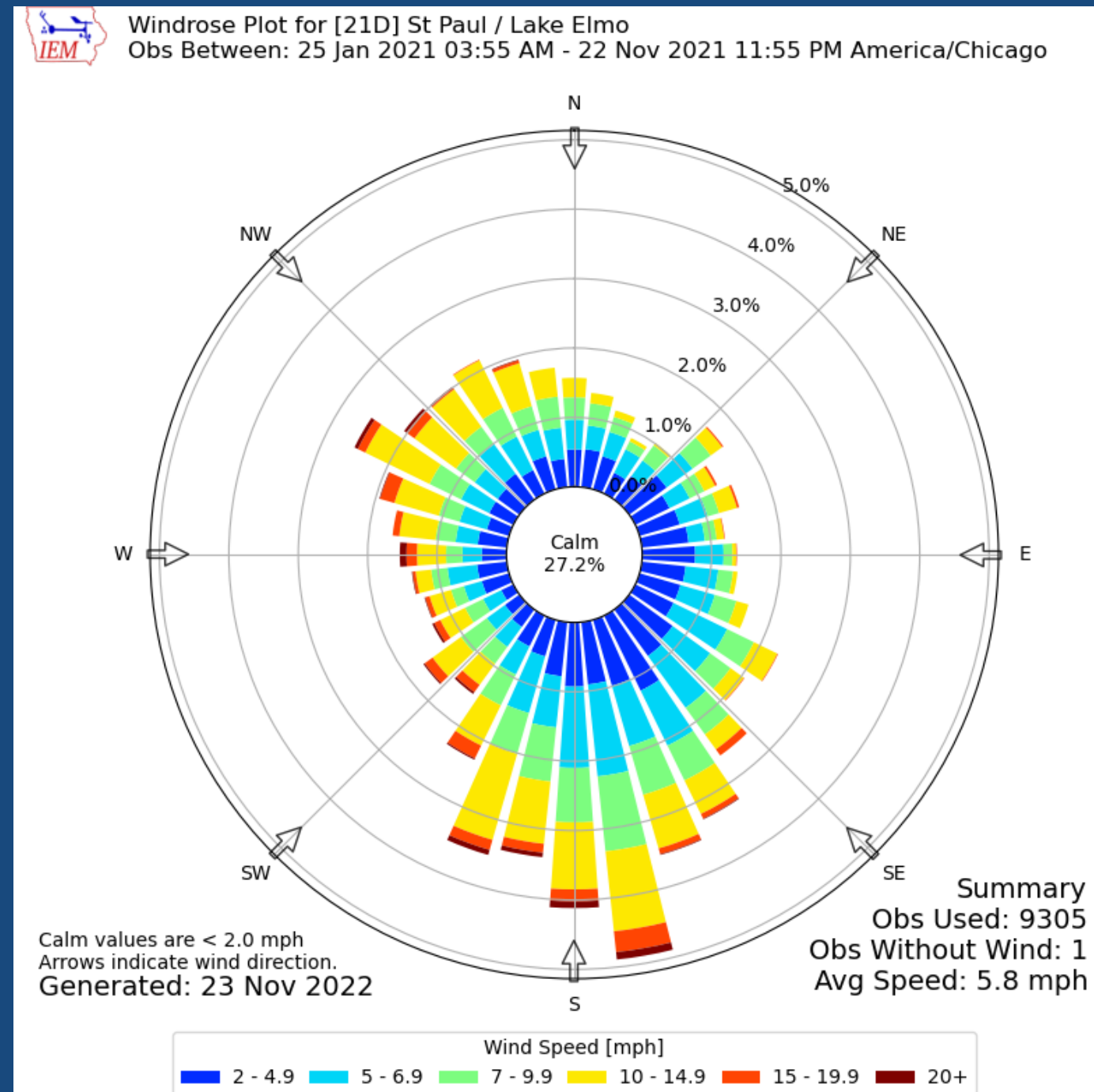
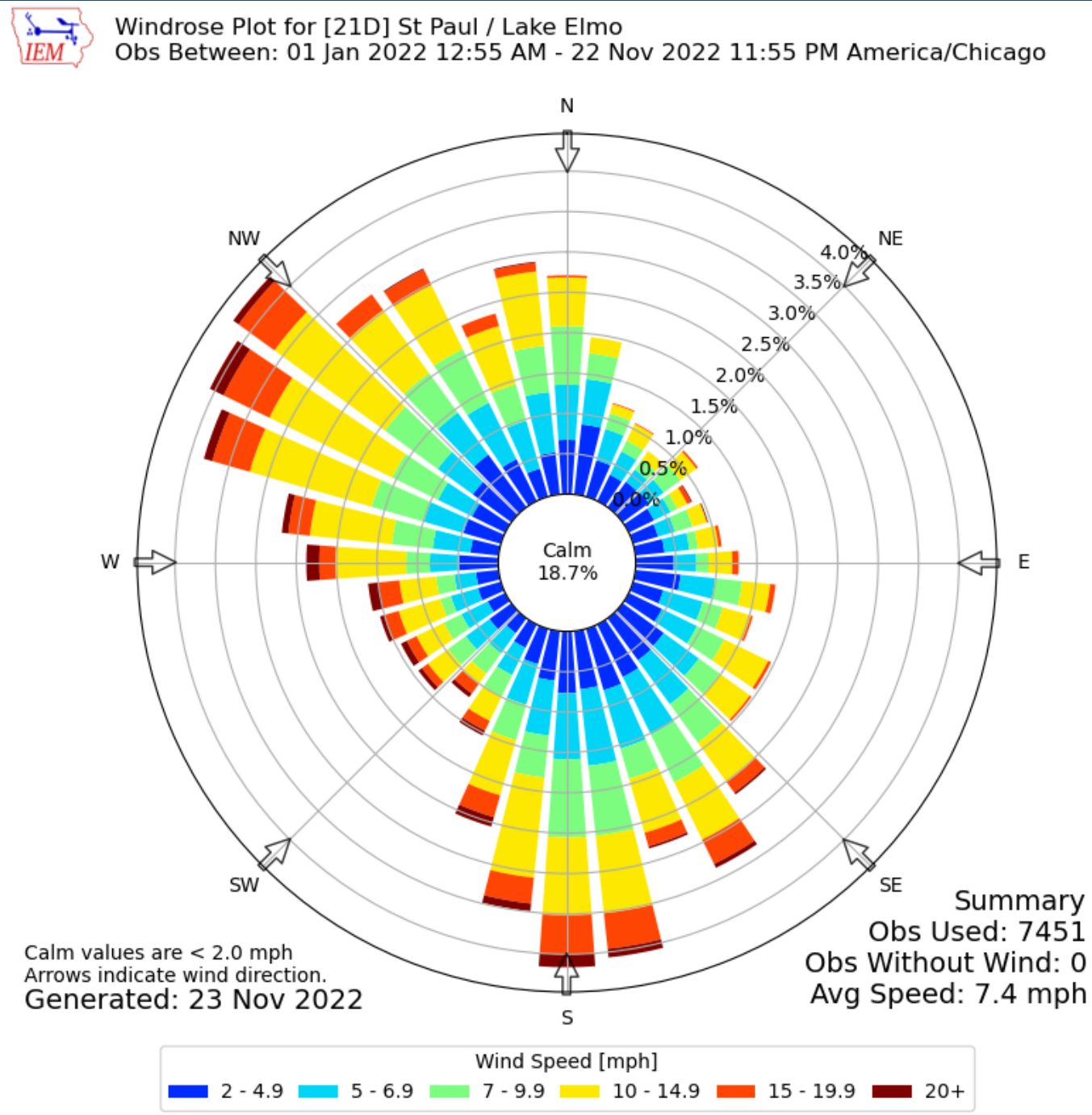
# Lake Elmo Airport Operations 2022 3<sup>rd</sup> Quarter



Beginning on July 1, 2021, MACNOMS methodology for counting operations was updated to more accurately reflect total aircraft departures and arrivals at MAC airports.



# Wind Summary Q3 2022 and 2021



# Public Comment

Members of the public are welcome to share their remarks with the Commission.  
Please state your name and address

Limit remarks to 3 minutes





# Member Perspectives



# Future Meeting Date Options:

Quarterly  
Fourth Monday @  
3 p.m.

**JANUARY**

S	M	T	W	T	F	S
1	2	3	4	5	6	7
8	9	10	11	12	13	14
15	16	17	18	19	20	21
22	23	24	25	26	27	28
29	30	31				

**FEBRUARY**

S	M	T	W	T	F	S
			1	2	3	4
5	6	7	8	9	10	11
12	13	14	15	16	17	18
19	20	21	22	23	24	25
26	27	28				

**MARCH**

S	M	T	W	T	F	S
			1	2	3	4
5	6	7	8	9	10	11
12	13	14	15	16	17	18
19	20	21	22	23	24	25
26	27	28	29	30	31	

**APRIL**

S	M	T	W	T	F	S
						1
2	3	4	5	6	7	8
9	10	11	12	13	14	15
16	17	18	19	20	21	22
23	24	25	26	27	28	29
30						

**MAY**

S	M	T	W	T	F	S
	1	2	3	4	5	6
7	8	9	10	11	12	13
14	15	16	17	18	19	20
21	22	23	24	25	26	27
28	29	30	31			

**JUNE**

S	M	T	W	T	F	S
				1	2	3
4	5	6	7	8	9	10
11	12	13	14	15	16	17
18	19	20	21	22	23	24
25	26	27	28	29	30	

**JULY**

S	M	T	W	T	F	S
						1
2	3	4	5	6	7	8
9	10	11	12	13	14	15
16	17	18	19	20	21	22
23	24	25	26	27	28	29
30	31					

**AUGUST**

S	M	T	W	T	F	S
		1	2	3	4	5
6	7	8	9	10	11	12
13	14	15	16	17	18	19
20	21	22	23	24	25	26
27	28	29	30	31		

**SEPTEMBER**

S	M	T	W	T	F	S
					1	2
3	4	5	6	7	8	9
10	11	12	13	14	15	16
17	18	19	20	21	22	23
24	25	26	27	28	29	30

**OCTOBER**

S	M	T	W	T	F	S
1	2	3	4	5	6	7
8	9	10	11	12	13	14
15	16	17	18	19	20	21
22	23	24	25	26	27	28
29	30	31				

**NOVEMBER**

S	M	T	W	T	F	S
			1	2	3	4
5	6	7	8	9	10	11
12	13	14	15	16	17	18
19	20	21	22	23	24	25
26	27	28	29	30		

**DECEMBER**

S	M	T	W	T	F	S
					1	2
3	4	5	6	7	8	9
10	11	12	13	14	15	16
17	18	19	20	21	22	23
24	25	26	27	28	29	30
31						





Thank  
you!