



**2020 ANNUAL MSP FLEET MIX AND
NIGHTTIME OPERATIONS REPORT**
JANUARY 2021

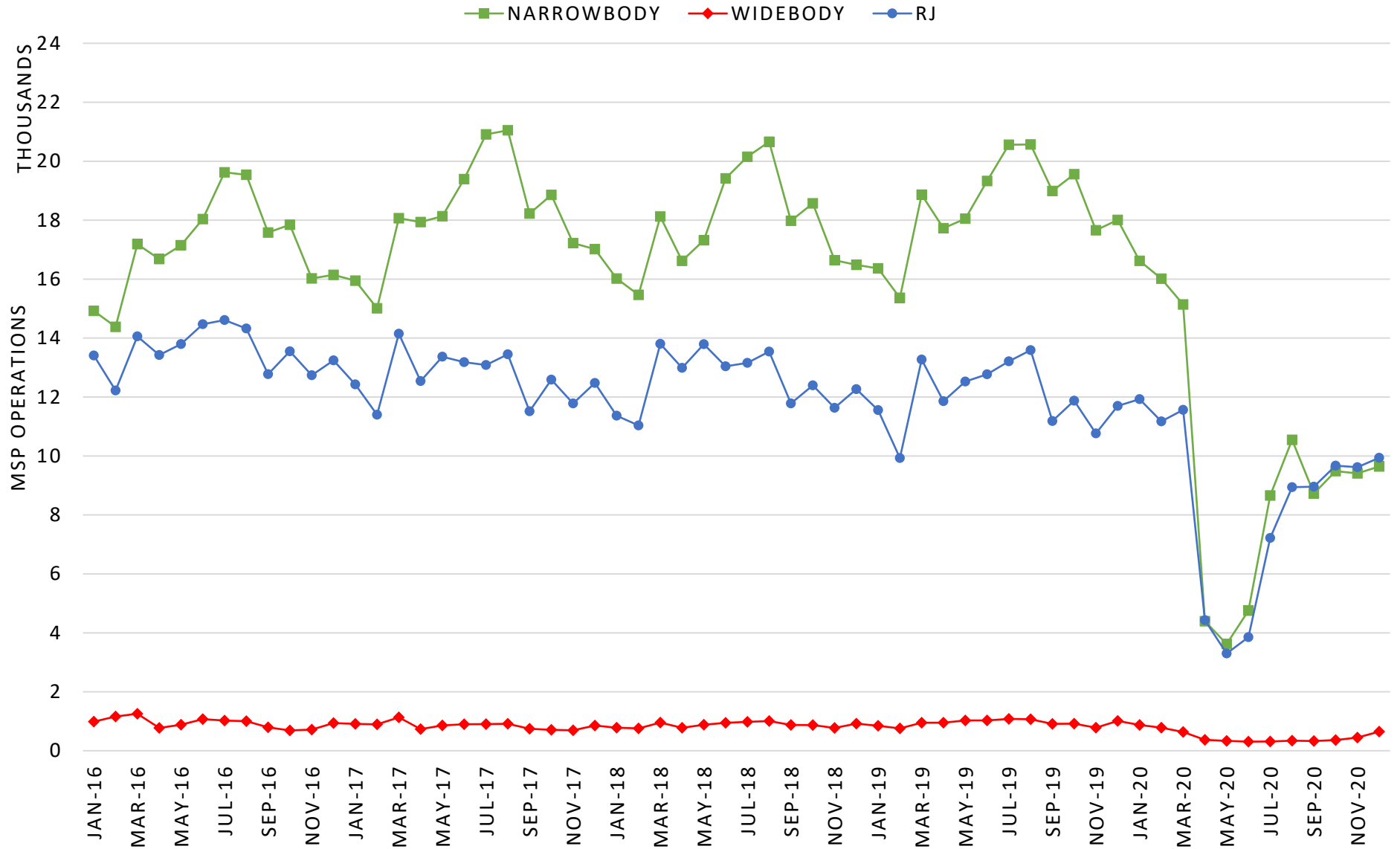
COMMUNITY RELATIONS OFFICE

2020 ANNUAL MSP FLEET MIX AND NIGHTTIME OPERATIONS REPORT

TABLE OF CONTENTS	
MSP FLEET MIX REPORT	
Monthly Carrier Jet Counts by Type	2
Widebody Jet Activity	3
Narrowbody Jet Activity	4
Regional Jet Activity	5
Average Passengers per Flight	6
MSP Carrier Jet Usage with Cumulative Certificated Noise Levels	7
Average Altitude for Aircraft Arriving to MSP by Category	8
Average Altitude for Aircraft Departing from MSP by Category	9
MSP NIGHTTIME OPERATIONS REPORT	
Average Daily Nighttime Operations	10
Nighttime Operations by Runway	11
Nighttime Operations by Runway Map	12
Nighttime Operations by Airline	13
Nighttime Operations by Aircraft	14
Nighttime Operations by Origin and Destination	15
Nighttime Operations by Hour	16
Scheduled Versus Actual Operations	17

MSP FLEET MIX REPORT

MONTHLY CARRIER JET COUNTS BY TYPE



HUSHKIT BY YEAR: 2016 - 48, 2017 - 26, 2018 - 32, 2019 - 18, 2020 - 8

MSP FLEET MIX REPORT
WIDEBODY JET ACTIVITY



WIDEBODY	TYPE	2016	2017	2018	2019	2020
	A124	0.0%	0.0%	0.0%	0.0%	0.0%
	A300	0.0%	0.0%	0.1%	0.2%	0.4%
	A310	0.0%	0.0%	0.0%	0.0%	0.0%
	A330	0.7%	0.8%	0.7%	0.6%	0.3%
	A340	0.1%	0.1%	0.0%	0.0%	0.0%
	A350	0.0%	0.0%	0.0%	0.0%	0.1%
	A380	0.0%	0.0%	0.0%	0.0%	0.0%
	B742	0.0%	0.0%	0.0%	0.0%	0.0%
	B744	0.0%	0.0%	0.0%	0.0%	0.0%
	B748	0.0%	0.0%	0.0%	0.0%	0.0%
	B762	0.1%	0.1%	0.0%	0.0%	0.0%
	B763	0.9%	0.5%	0.8%	1.1%	1.1%
	B764	0.2%	0.0%	0.0%	0.1%	0.0%
	B767	0.0%	0.0%	0.0%	0.0%	0.0%
	B777	0.2%	0.4%	0.4%	0.5%	0.1%
	B7878	0.0%	0.0%	0.0%	0.1%	0.0%
	DC10	0.1%	0.3%	0.2%	0.0%	0.1%
	MD11	0.6%	0.5%	0.3%	0.2%	0.4%
	TOTAL	3.0%	2.7%	2.8%	3.0%	2.6%

MSP FLEET MIX REPORT
NARROWBODY JET ACTIVITY



NARROWBODY	TYPE	2016	2017	2018	2019	2020
	A220	0.0%	0.0%	0.0%	0.3%	0.9%
	A319	7.2%	6.7%	6.4%	6.7%	7.0%
	A320	9.9%	7.1%	6.6%	7.4%	5.5%
	A320neo	0.0%	0.2%	0.4%	0.6%	0.5%
	A321	0.5%	0.5%	2.2%	6.6%	9.6%
	B717	2.4%	5.2%	5.9%	7.8%	2.4%
	B72Q	0.0%	0.0%	0.0%	0.0%	0.0%
	B733	0.7%	0.4%	0.0%	0.0%	0.0%
	B734	0.0%	0.0%	0.0%	0.0%	0.1%
	B735	0.0%	0.0%	0.0%	0.0%	0.0%
	B7377	4.8%	5.0%	4.7%	3.8%	2.6%
	B738	7.8%	9.8%	10.1%	11.3%	10.8%
	B739	3.8%	5.0%	7.5%	8.1%	8.0%
	B38M	0.0%	0.0%	0.1%	0.0%	0.0%
	B73Q	0.0%	0.0%	0.0%	0.0%	0.0%
	B757	5.8%	5.9%	6.1%	5.1%	5.0%
	DC8Q	0.0%	0.0%	0.0%	0.0%	0.0%
	DC9Q	0.0%	0.0%	0.0%	0.0%	0.0%
	MD80	3.6%	2.5%	0.3%	0.0%	0.0%
MD90	7.6%	8.8%	6.8%	0.6%	0.0%	
TOTAL	54.1%	57.3%	57.0%	58.7%	52.4%	

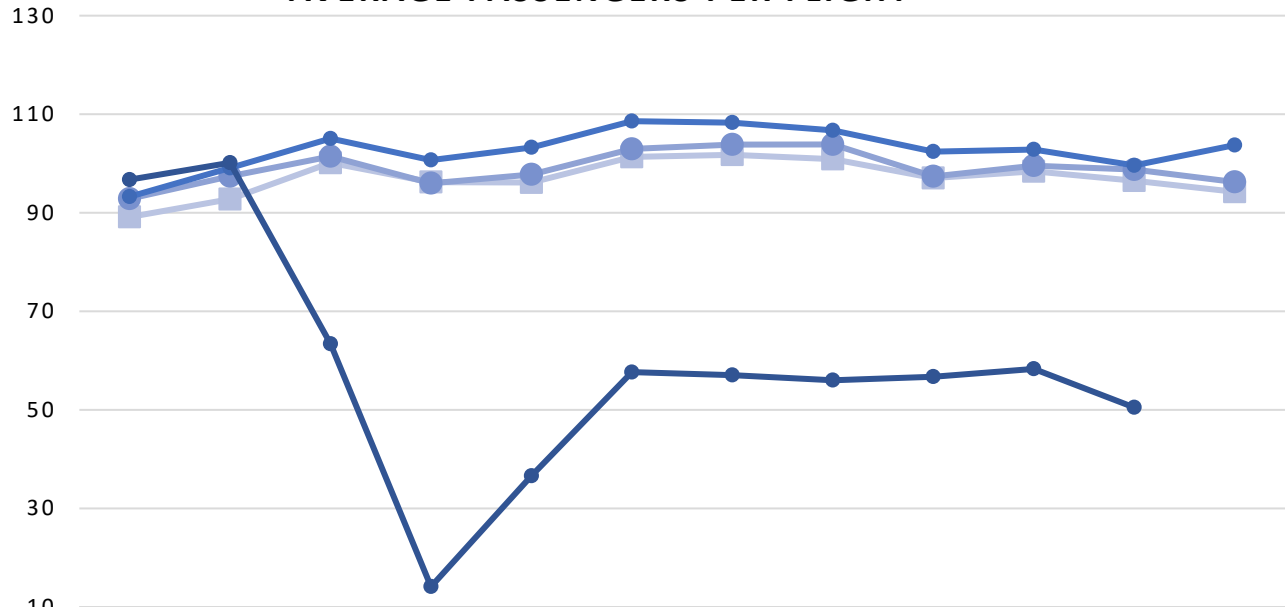
MSP FLEET MIX REPORT
REGIONAL JET ACTIVITY



REGIONAL JET	TYPE	2016	2017	2018	2019	2020
	BA46	0.0%	0.0%	0.0%	0.0%	0.0%
	CRJ	0.0%	0.0%	0.0%	0.0%	0.0%
	CRJ1	0.1%	0.1%	0.0%	0.0%	0.0%
	CRJ2	17.2%	16.2%	14.3%	12.9%	10.8%
	CRJ7	2.7%	4.8%	7.0%	3.9%	2.9%
	CRJ9	13.7%	11.3%	13.0%	13.8%	20.2%
	E135	0.0%	0.0%	0.0%	0.0%	0.0%
	E145	0.2%	0.1%	0.0%	0.0%	0.4%
	E170	8.7%	7.1%	5.5%	7.3%	10.6%
	E175	0.0%	0.0%	0.0%	0.0%	0.0%
	E190	0.2%	0.5%	0.3%	0.4%	0.1%
	J328	0.0%	0.0%	0.0%	0.0%	0.0%
TOTAL	42.9%	40.0%	40.2%	38.3%	45.0%	

MSP FLEET MIX REPORT

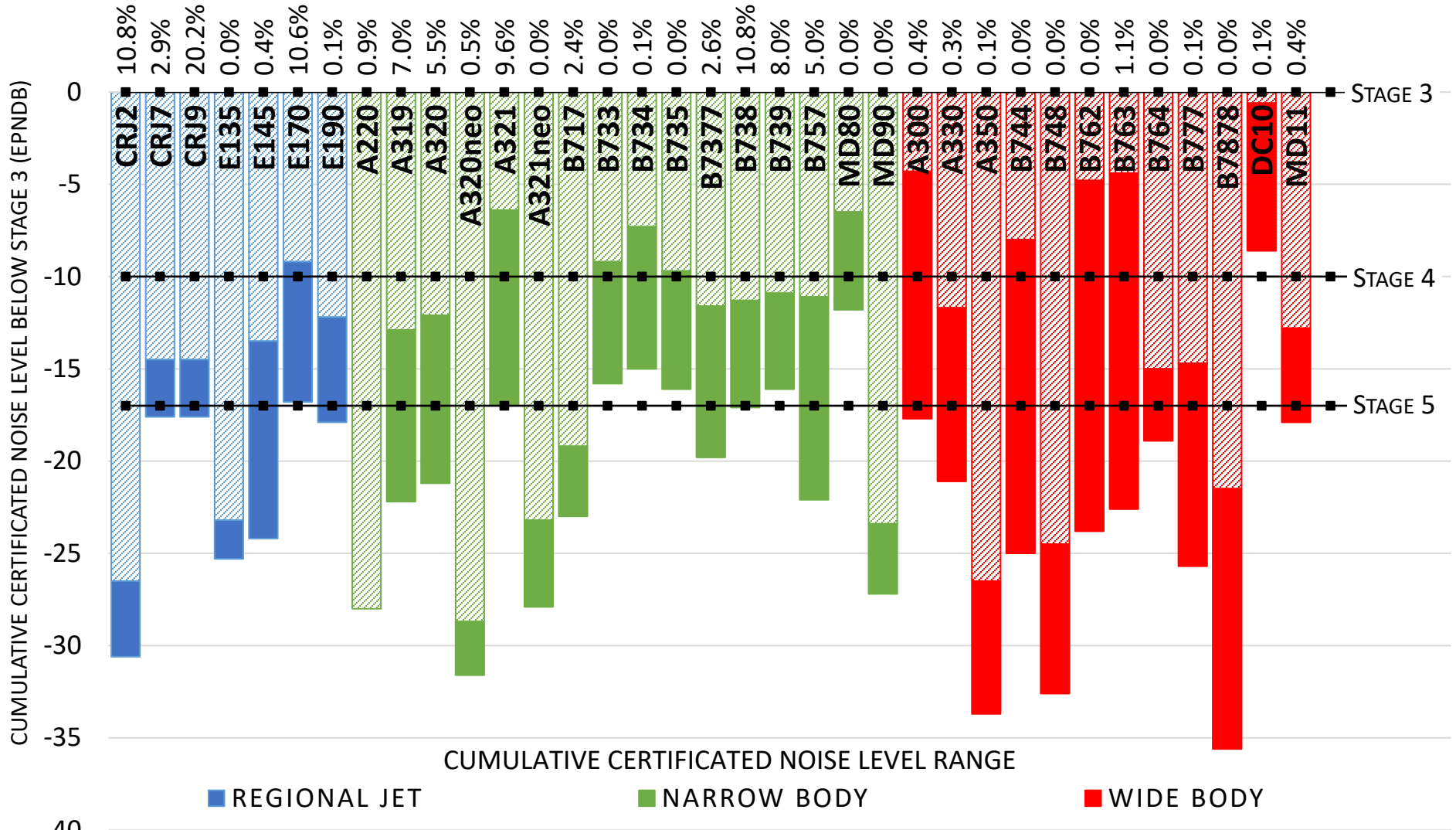
AVERAGE PASSENGERS PER FLIGHT



	JAN	FEB	MAR	APR	MAY	JUN	JUL	AUG	SEP	OCT	NOV	DEC
2017	89.1	92.8	100.1	96.2	96.1	101.3	101.8	100.9	97.0	98.4	96.5	94.2
2018	92.8	97.4	101.4	96.0	97.8	103.0	103.8	103.9	97.4	99.6	98.8	96.2
2019	93.3	99.1	105.1	100.7	103.3	108.6	108.3	106.7	102.4	102.8	99.6	103.7
2020	96.7	100.1	63.4	14.1	36.6	57.7	57.1	56.0	56.7	58.3	50.5	

SOURCE: MSP MONTHLY OPERATIONS REPORTS

2020 MSP CARRIER JET USAGE WITH CUMULATIVE CERTIFICATED NOISE LEVELS

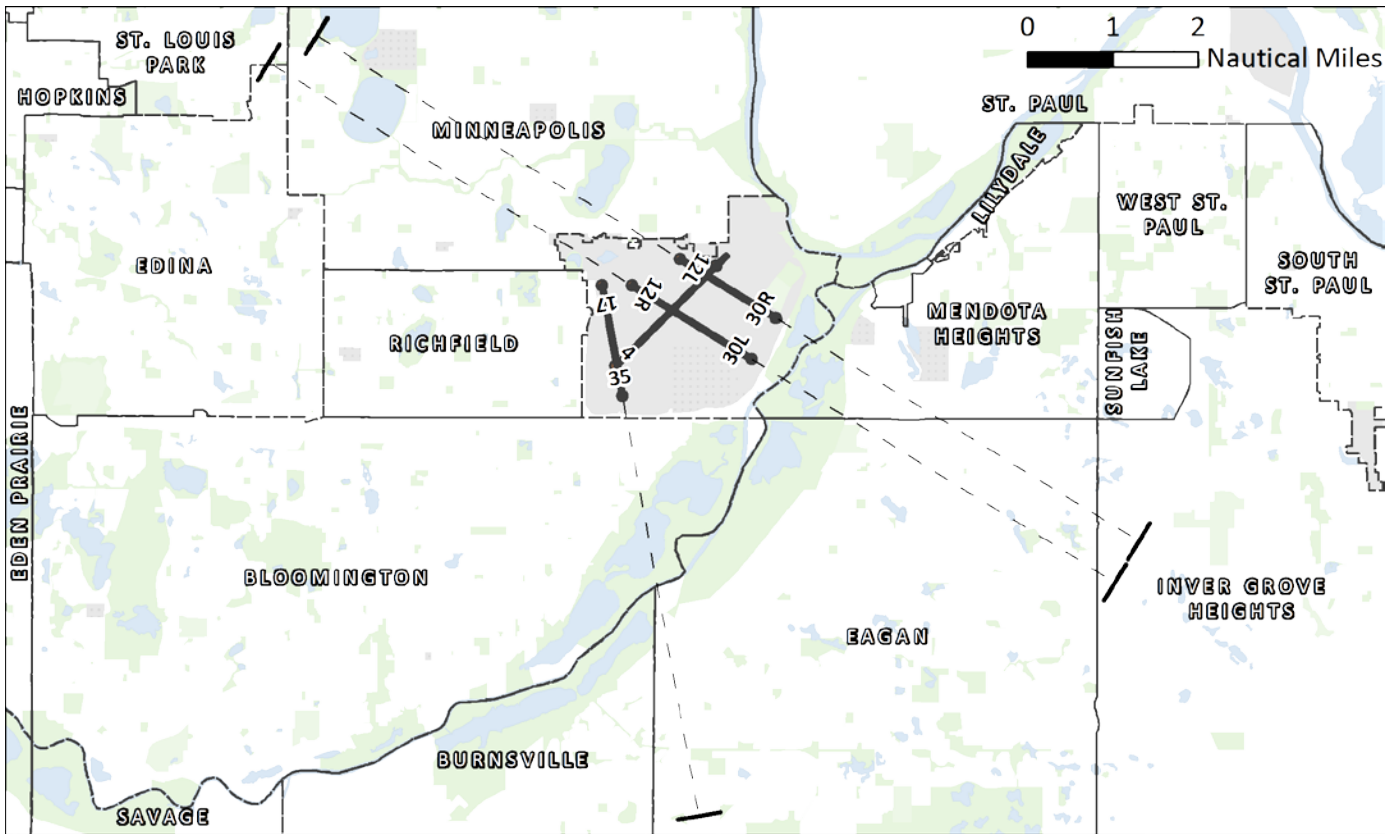
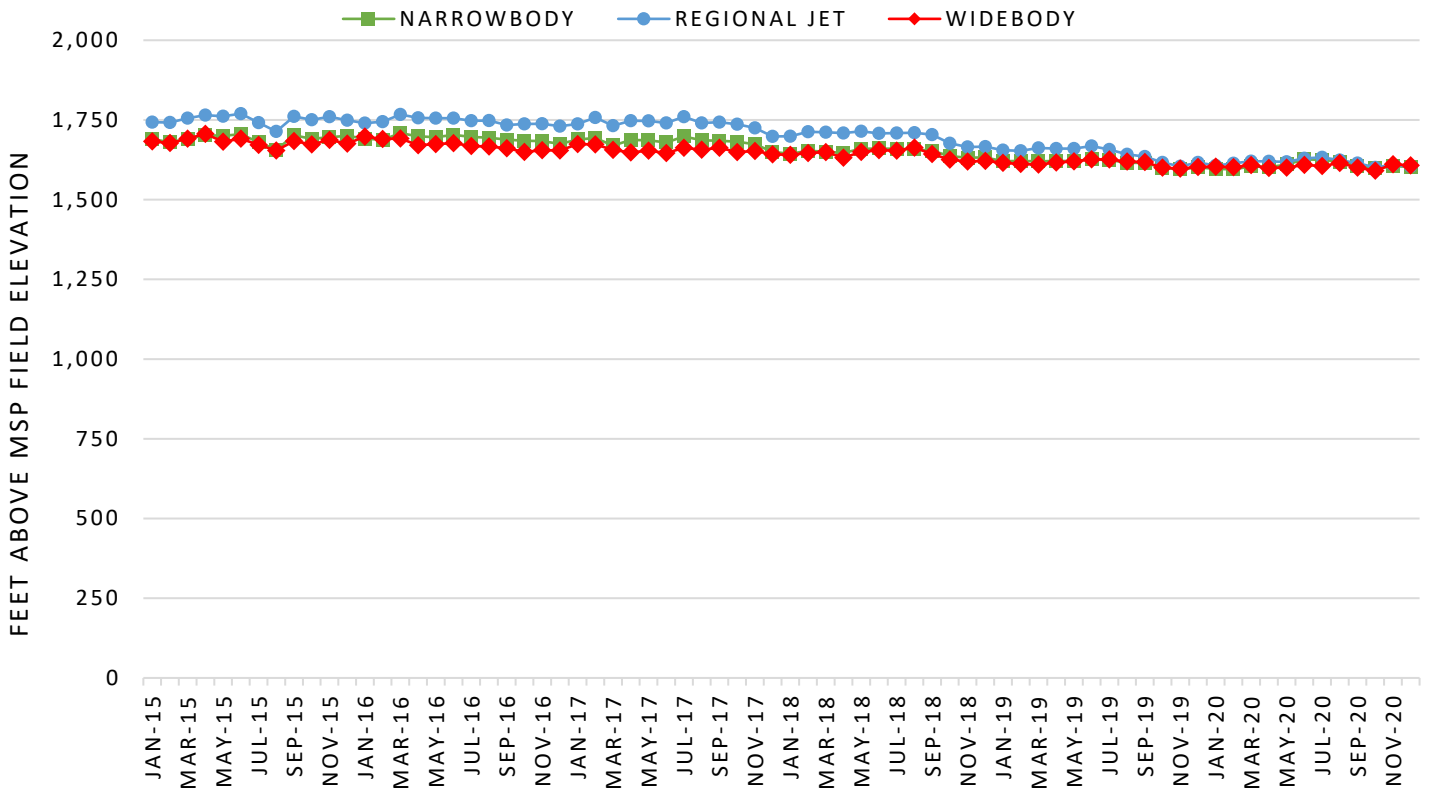


SOURCE: USAGE DATA: MACNOMS; NOISE CERTIFICATION DATA: EUROPEAN AVIATION SAFETY AGENCY

CUMULATIVE CERTIFICATED NOISE LEVELS REPRESENTED AS A RANGE TO ACCOUNT FOR MULTIPLE CERTIFICATION VARIABLES (WEIGHT,

MSP FLEET MIX REPORT

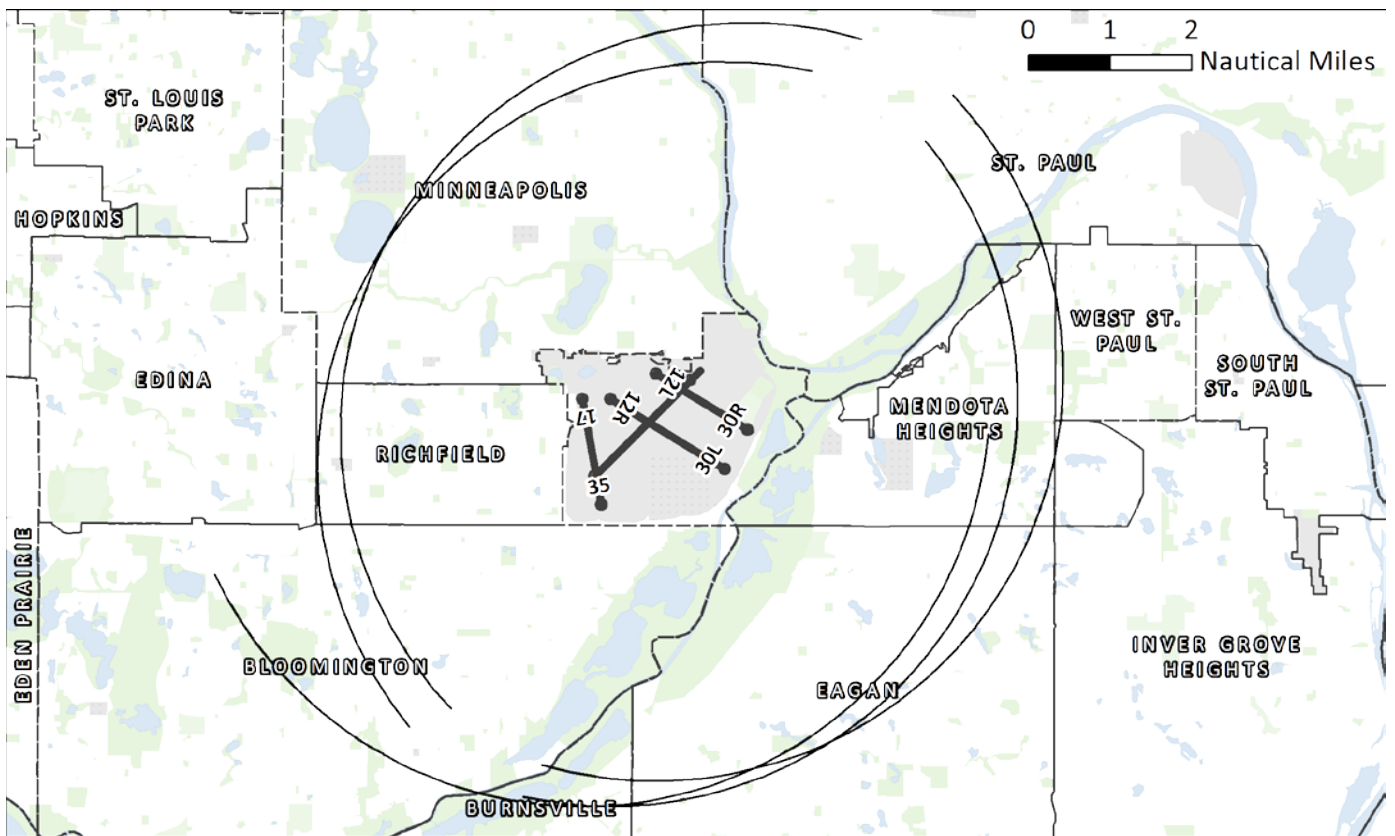
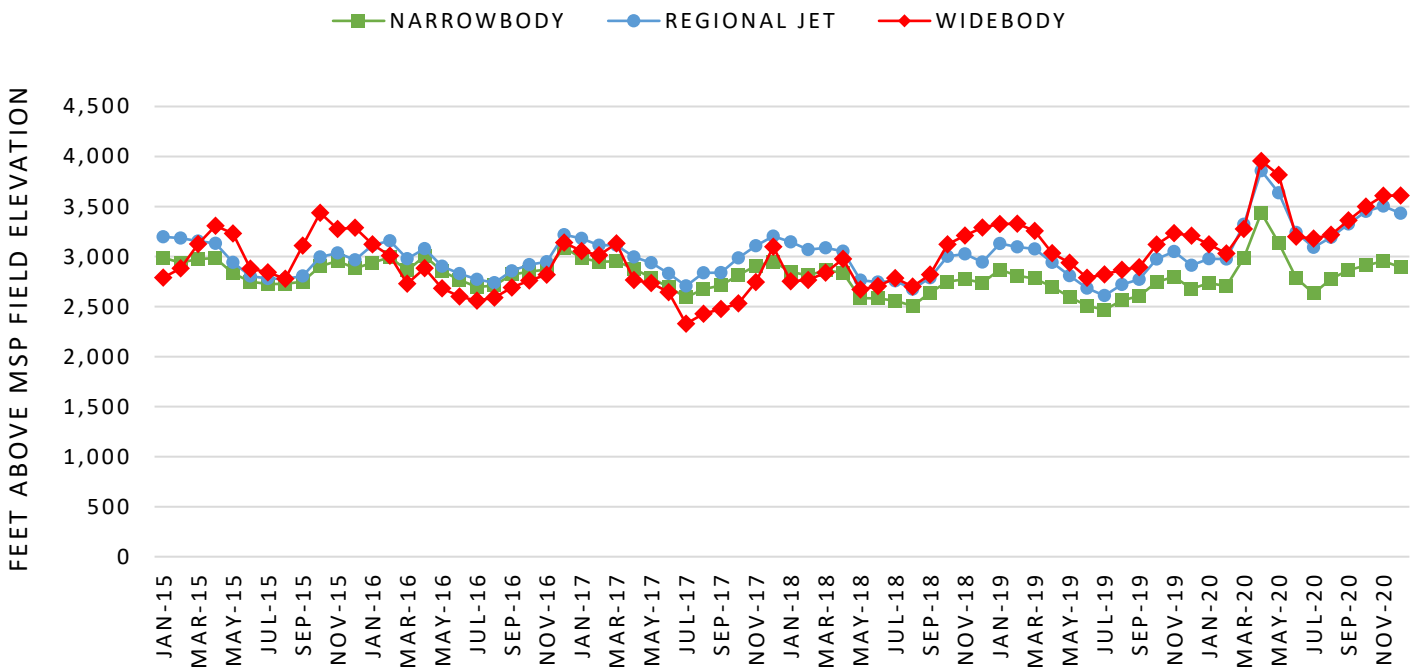
AVERAGE ALTITUDE FOR AIRCRAFT ARRIVING TO MSP



MEASUREMENT GATE IS FIVE NAUTICAL MILES FROM THE THRESHOLD OF THE ARRIVAL RUNWAY

MSP FLEET MIX REPORT

AVERAGE ALTITUDE FOR AIRCRAFT DEPARTING FROM MSP

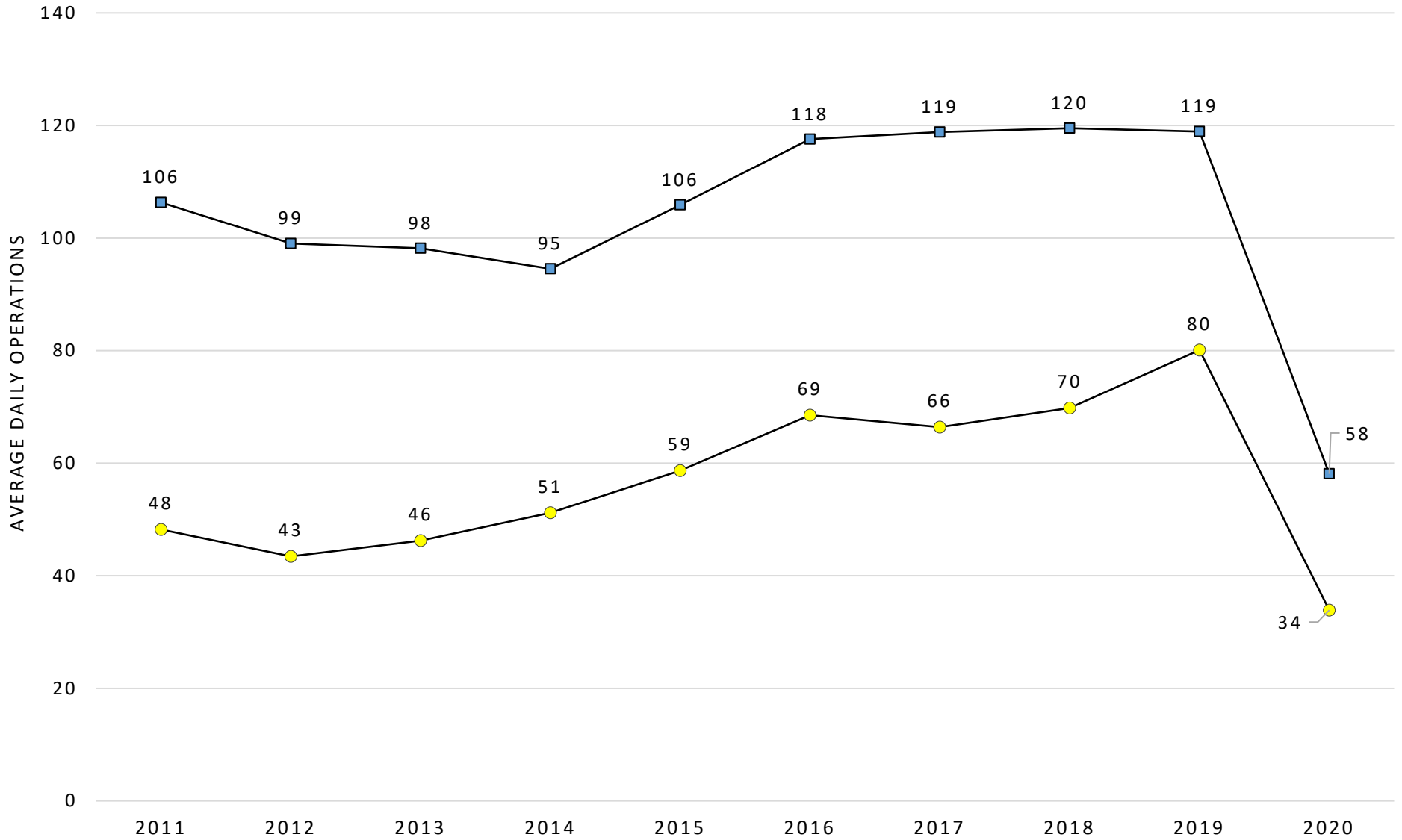


MEASUREMENT GATE IS AN ARC FIVE NAUTICAL MILES FROM THE START OF TAKEOFF ROLL

MSP NIGHTTIME OPERATIONS REPORT

AVERAGE DAILY NIGHTTIME OPERATIONS

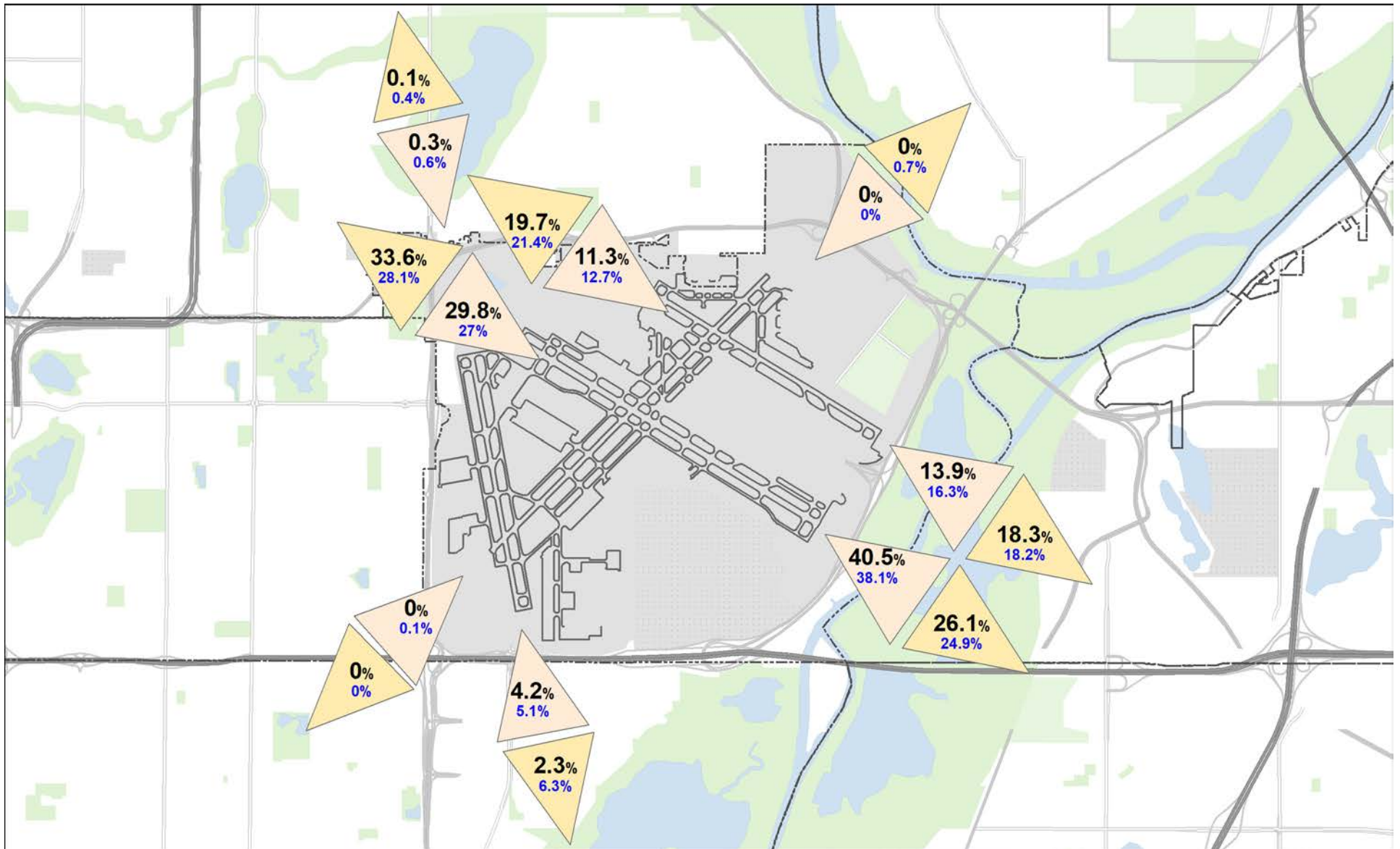
● 10:30 PM - 6:00 AM ■ 10:00 PM - 7:00 AM



MSP NIGHTTIME OPERATIONS REPORT
NIGHTTIME OPERATIONS BY RUNWAY
(10:30 PM – 6:00 AM)

RWY	ARR / DEP	OVERFLIGHT AREA	2020			2017 - 2019 AVERAGE		
			TOTAL NIGHT OPS	AVERAGE DAILY NIGHT OPS	%	TOTAL NIGHT OPS	AVERAGE DAILY NIGHT OPS	%
04	ARR	SO. RICHFIELD/BLOOMINGTON	0	0.0	0.0%	24	0.1	0.1%
12L	ARR	SO. MINNEAPOLIS/NO. RICHFIELD	1,038	2.8	11.3%	2,328	6.4	12.7%
12R	ARR	SO. MINNEAPOLIS/NO. RICHFIELD	2,733	7.5	29.8%	4,970	13.6	27.0%
17	ARR	SO. MINNEAPOLIS	26	0.1	0.3%	112	0.3	0.6%
22	ARR	ST. PAUL/HIGHLAND PARK	0	0.0	0.0%	8	0.0	0.0%
30L	ARR	EAGAN/MENDOTA HEIGHTS	3,720	10.2	40.5%	7,011	19.2	38.1%
30R	ARR	EAGAN/MENDOTA HEIGHTS	1,276	3.5	13.9%	3,001	8.2	16.3%
35	ARR	BLOOMINGTON/EAGAN	390	1.1	4.2%	933	2.6	5.1%
TOTAL NIGHTTIME ARRIVALS			9,183	25.2		18,387	50.4	
04	DEP	ST. PAUL/HIGHLAND PARK	1	0.0	0.0%	53	0.1	0.7%
12L	DEP	EAGAN/MENDOTA HEIGHTS	588	1.6	18.3%	1,447	4.0	18.2%
12R	DEP	EAGAN/MENDOTA HEIGHTS	839	2.3	26.1%	1,976	5.4	24.9%
17	DEP	BLOOMINGTON/EAGAN	73	0.2	2.3%	499	1.4	6.3%
22	DEP	SO. RICHFIELD/BLOOMINGTON	1	0.0	0.0%	1	0.0	0.0%
30L	DEP	SO. MINNEAPOLIS/NO. RICHFIELD	1,081	3.0	33.6%	2,232	6.1	28.1%
30R	DEP	SO. MINNEAPOLIS/NO. RICHFIELD	634	1.7	19.7%	1,695	4.6	21.4%
35	DEP	SO. MINNEAPOLIS	3	0.0	0.1%	30	0.1	0.4%
TOTAL NIGHTTIME DEPARTURES			3,220	8.8		7,933	21.6	
TOTAL NIGHTTIME OPERATIONS			12,403	34.0		26,320	72.0	

MSP NIGHTTIME OPERATIONS REPORT
NIGHTTIME OPERATIONS BY RUNWAY MAP
(10:30 PM – 6:00 AM)



MSP NIGHTTIME OPERATIONS REPORT
NIGHTTIME OPERATIONS BY AIRLINE
 (TOP 15 BY COUNT)

2020	AIRLINE	ID	COUNT	PERCENT OF AIRLINE OPERATIONS OCCURRING AT NIGHT	PERCENT OF CONTRIBUTION TO NIGHTTIME TOTAL
	DELTA	DAL	2,688	3.60%	21.67%
	SUN COUNTRY	SCX	2,355	16.00%	18.99%
	UPS	UPS	1,359	38.80%	10.96%
	SKYWEST AIRLINES	SKW	1,203	2.20%	9.70%
	FEDEX	FDX	725	23.80%	5.85%
	SOUTHWEST	SWA	577	6.90%	4.65%
	AMERICAN	AAL	572	8.70%	4.61%
	SPIRIT	NKS	492	14.10%	3.97%
	GULF & CARIBBEAN CARGO	TSU	366	95.80%	2.95%
	REPUBLIC AIRLINES	RPA	355	7.20%	2.86%
	ALASKA	ASA	239	18.00%	1.93%
	ATLAS AIR (USA)	GTI	223	76.60%	1.80%
	FRONTIER AIRLINES	FFT	220	17.80%	1.77%
	UNITED	UAL	191	6.40%	1.54%
ENDEAVOR AIR	EDV	130	0.40%	1.05%	

2019	AIRLINE	ID	COUNT	PERCENT OF AIRLINE OPERATIONS OCCURRING AT NIGHT	PERCENT OF CONTRIBUTION TO NIGHTTIME TOTAL
	DELTA	DAL	8,370	5.60%	28.63%
	SKYWEST AIRLINES	SKW	4,541	4.70%	15.53%
	SUN COUNTRY	SCX	3,781	17.80%	12.93%
	SOUTHWEST	SWA	1,958	12.50%	6.70%
	AMERICAN	AAL	1,640	11.80%	5.61%
	UPS	UPS	1,254	37.20%	4.29%
	SPIRIT	NKS	1,093	14.20%	3.74%
	REPUBLIC AIRLINES	RPA	899	8.50%	3.07%
	UNITED	UAL	859	12.20%	2.94%
	FEDEX	FDX	855	27.30%	2.92%
	ATLAS AIR (USA)	GTI	590	77.00%	2.02%
	JETBLUE AIRWAYS	JBU	533	26.50%	1.82%
	FRONTIER AIRLINES	FFT	511	16.10%	1.75%
	ENDEAVOR AIR	EDV	487	1.80%	1.67%
GULF & CARIBBEAN CARGO	TSU	377	98.20%	1.29%	

*AIRLINE OPERATIONS OCCURRING AT NIGHT REPRESENTS THE PERCENTAGE OF RESPECTIVE AIRLINE SCHEDULE THAT OCCURS AT NIGHT

*CONTRIBUTION TO TOTAL IS RESPECTIVE AIRLINE CONTRIBUTIONS TO OVERALL MSP NIGHT OPERATIONS

MSP NIGHTTIME OPERATIONS REPORT
2020 NIGHTTIME OPERATIONS BY AIRCRAFT
 (TOP 15 BY COUNT)

AIRCRAFT CODE	DESCRIPTION	COUNT	NOISE LEVEL CERTIFICATION (EPNdB BELOW STAGE 3)
B738	BOEING 737-800	2,890	11.3 - 17.1
B757	BOEING 757-200	1,825	11.1 - 22.1
A320	AIRBUS INDUSTRIES A320	1,243	12.1 - 21.2
A321	AIRBUS INDUSTRIES A321	919	6.4 - 17
CRJ2	CANADAIR REGIONAL JET CRJ-200	858	26.5 - 30.6
B739	BOEING 737-900	769	10.9 - 16.1
E170	EMBRAER 170	620	9.2 - 16.8
CRJ9	CANADAIR REGIONAL JET CRJ-900	551	14.5 - 17.6
B763	BOEING 767-300	515	4.4 - 22.6
B7377	BOEING 737-700	422	11.6 - 19.8
A300	AIRBUS INDUSTRIES A300	358	4.3 - 17.7
A319	AIRBUS INDUSTRIES A319	341	12.9 - 22.2
MD11	MCDONNELL DOUGLAS MD11	233	12.8 - 17.9
CRJ7	CANADAIR REGIONAL JET CRJ-700	159	14.5 - 17.6
B717	BOEING 717	94	19.2 - 23

NOISE CERTIFICATION DATA SOURCE: EUROPEAN AVIATION SAFETY AGENCY

CUMULATIVE CERTIFICATED NOISE LEVELS REPRESENTED AS A RANGE BELOW STAGE 3 NOISE LEVELS TO ACCOUNT FOR MULTIPLE CERTIFICATION VARIABLES (WEIGHT, MODEL, ENGINE TYPE, AIRFRAME CONFIGURATION, ETC)

MSP NIGHTTIME OPERATIONS REPORT
2020 NIGHTTIME OPERATIONS BY ORIGIN AND DESTINATION
 (TOP 15 BY COUNT)

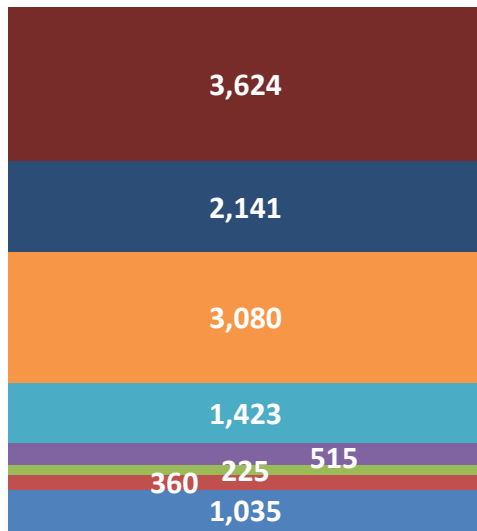
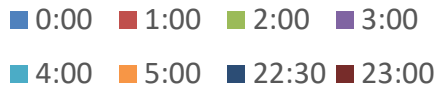
AIRPORT CODE	ORIGIN AIRPORT	COUNT
PHX	PHOENIX	613
LAX	LOS ANGELES	504
LAS	LAS VEGAS	503
SEA	SEATTLE	494
DEN	DENVER	449
SDF	LOUISVILLE	419
MEM	MEMPHIS	399
ATL	ATLANTA	386
DFW	DALLAS FORT WORTH	376
IND	INDIANAPOLIS	321
SFO	SAN FRANCISCO	285
PHL	PHILADELPHIA	266
MIA	MIAMI	235
RFD	ROCKFORD	225
MCO	ORLANDO	208

AIRPORT CODE	DESTINATION AIRPORT	COUNT
ATL	ATLANTA	232
TVF	THEIF RIVER FALLS REGIONAL	170
CVG	CINCINNATI	165
FLL	FT. LAUDERDALE	126
PHX	PHOENIX	122
FAR	FARGO	115
MIA	MIAMI	109
ONT	ONTARIO	102
DEN	DENVER	96
ORD	CHICAGO O'HARE	88
YWG	WINNIPEG	85
BJI	BEMIDGI REGIONAL	79
ABR	ABERDEEN	77
MSN	MADISON	75
RST	ROCHESTER MN	75

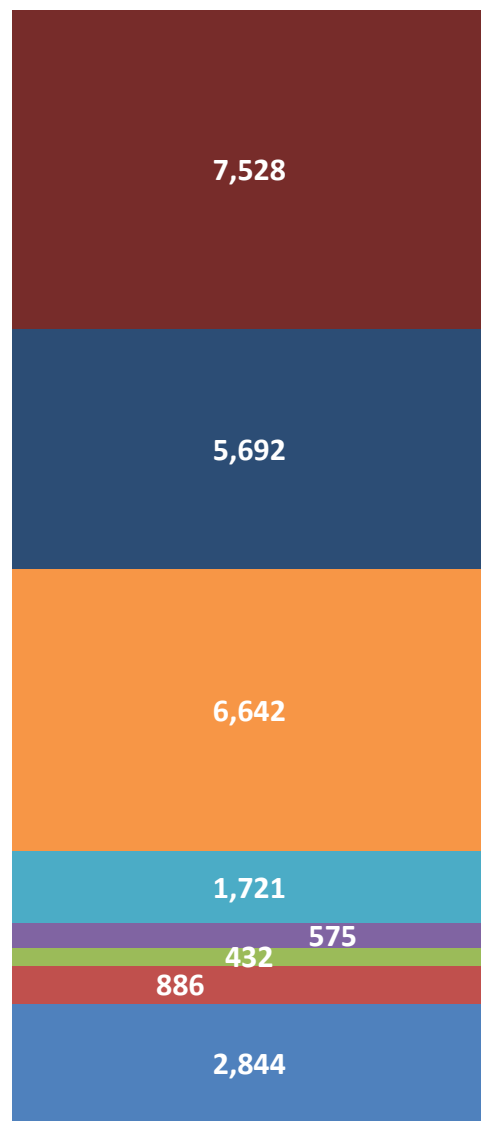
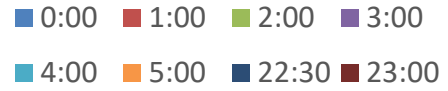
MSP NIGHTTIME OPERATIONS REPORT

NIGHTTIME OPERATIONS BY HOUR

2020



3-YEAR HISTORICAL AVERAGE



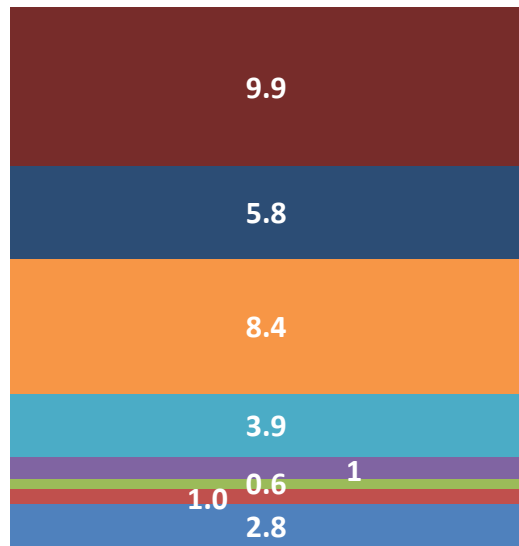
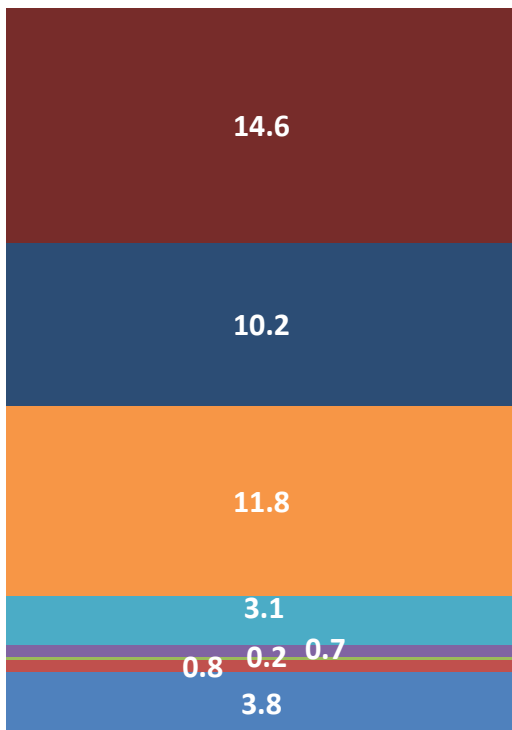
MSP NIGHTTIME OPERATIONS REPORT
SCHEDULED VERSUS ACTUAL OPERATIONS
 (AVERAGE BY HOUR)

DAILY SCHEDULED NIGHT OPERATIONS

0:00 1:00 2:00 3:00
 4:00 5:00 22:30 23:00

DAILY ACTUAL NIGHT OPERATIONS

0:00 1:00 2:00 3:00
 4:00 5:00 22:30 23:00



GENERAL AVIATION AND CHARTER AIRCRAFT OPERATORS DO NOT REPORT SCHEDULED OPERATIONS



Metropolitan Airports Commission

6040 28th Avenue South, Minneapolis, MN 55450

macnoise.com

This report is for informational purposes only.