



2025 ANNUAL MSP FLEET MIX AND NIGHTTIME OPERATIONS REPORT

JANUARY 2026

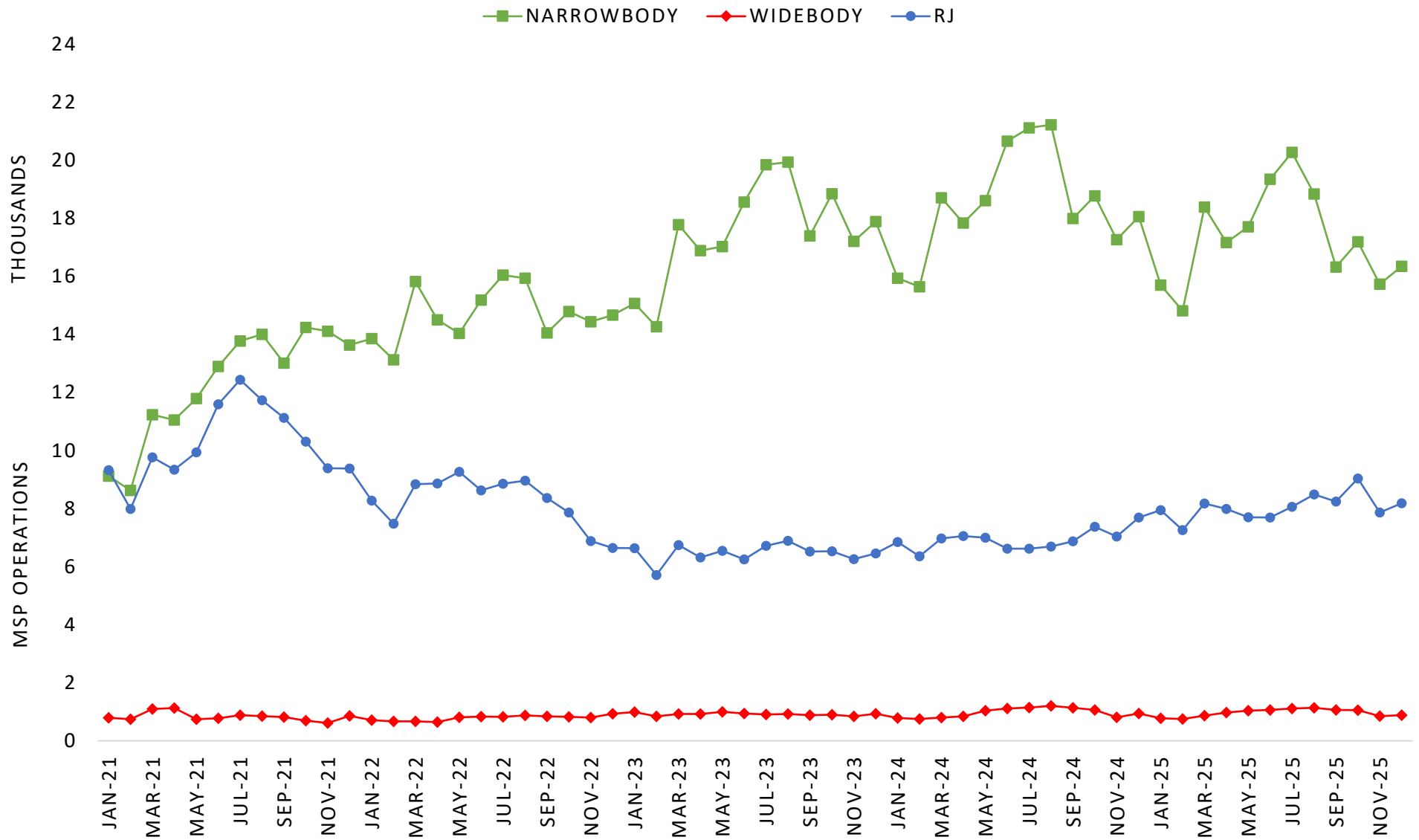
COMMUNITY RELATIONS OFFICE

2025 ANNUAL MSP FLEET MIX AND NIGHTTIME OPERATIONS REPORT

TABLE OF CONTENTS		
MSP FLEET MIX REPORT		
Monthly Carrier Jet Counts by Type		2
Widebody Jet Activity		3
Narrowbody Jet Activity		4
Regional Jet Activity		5
Average Passengers per Flight		6
MSP Carrier Jet Usage with Cumulative Certificated Noise Levels		7
Average Altitude for Aircraft Arriving to MSP by Category		8
Average Altitude for Aircraft Departing from MSP by Category		9
MSP NIGHTTIME OPERATIONS REPORT		
Average Daily Nighttime Operations		10
Nighttime Operations by Runway		11
Nighttime Operations by Runway Map		12
Nighttime Operations by Airline		13
Nighttime Operations by Aircraft		14
Nighttime Operations by Origin and Destination		15
Nighttime Operations by Hour		16
Scheduled Versus Actual Operations		17

MSP FLEET MIX REPORT

MONTHLY CARRIER JET COUNTS BY TYPE



WIDEBODY JET ACTIVITY



WIDEBODY	TYPE	2021	2022	2023	2024	2025
	A124	0.0%	0.0%	0.0%	0.0%	0.0%
	A300	0.1%	0.0%	0.3%	0.3%	0.3%
	A310	0.0%	0.0%	0.0%	0.0%	0.0%
	A330	1.0%	1.2%	1.6%	1.5%	1.4%
	A340	0.0%	0.0%	0.0%	0.0%	0.0%
	A350	0.0%	0.1%	0.3%	0.3%	0.7%
	A380	0.0%	0.0%	0.0%	0.0%	0.0%
	B742	0.0%	0.0%	0.0%	0.0%	0.0%
	B744	0.1%	0.1%	0.0%	0.0%	0.0%
	B748	0.1%	0.1%	0.0%	0.0%	0.0%
	B762	0.0%	0.0%	0.1%	0.1%	0.1%
	B763	1.8%	1.5%	0.9%	0.8%	0.7%
	B764	0.2%	0.1%	0.0%	0.0%	0.0%
	B777	0.0%	0.1%	0.0%	0.1%	0.0%
	B7878	0.1%	0.0%	0.1%	0.1%	0.2%
	TOTAL	3.4%	3.2%	3.3%	3.3%	3.4%

MSP FLEET MIX REPORT

NARROWBODY JET ACTIVITY



NARROWBODY	TYPE	2021	2022	2023	2024	2025
	A220	2.0%	1.9%	2.7%	2.5%	4.7%
	A319	6.6%	9.2%	6.8%	5.4%	5.4%
	A20N	0.5%	0.6%	0.9%	0.7%	0.5%
	A320	6.0%	6.2%	9.4%	8.4%	7.5%
	A21N	0.0%	0.1%	0.8%	1.1%	2.1%
	A321	10.4%	12.5%	10.5%	8.9%	8.8%
	B717	0.4%	2.4%	5.8%	6.1%	3.9%
	B72Q	0.0%	0.0%	0.0%	0.0%	0.0%
	B733	0.0%	0.0%	0.0%	0.0%	0.0%
	B734	0.1%	0.3%	0.1%	0.0%	0.1%
	B735	0.0%	0.0%	0.0%	0.0%	0.0%
	B7377	2.1%	2.5%	2.6%	2.1%	1.4%
	B738	11.1%	12.6%	15.4%	16.2%	14.3%
	B739	8.7%	9.4%	11.5%	14.5%	12.3%
	B38M	0.3%	0.5%	1.3%	1.7%	1.8%
	B73Q	0.0%	0.0%	0.0%	0.0%	0.0%
	B757	4.6%	3.8%	2.5%	2.3%	3.0%
	DC9Q	0.0%	0.0%	0.0%	0.0%	0.0%
	MD80	0.0%	0.0%	0.0%	0.0%	0.0%
	B736	0.0%	0.0%	0.0%	0.0%	0.0%
	TOTAL	52.7%	61.9%	70.4%	70.1%	65.8%

MSP FLEET MIX REPORT

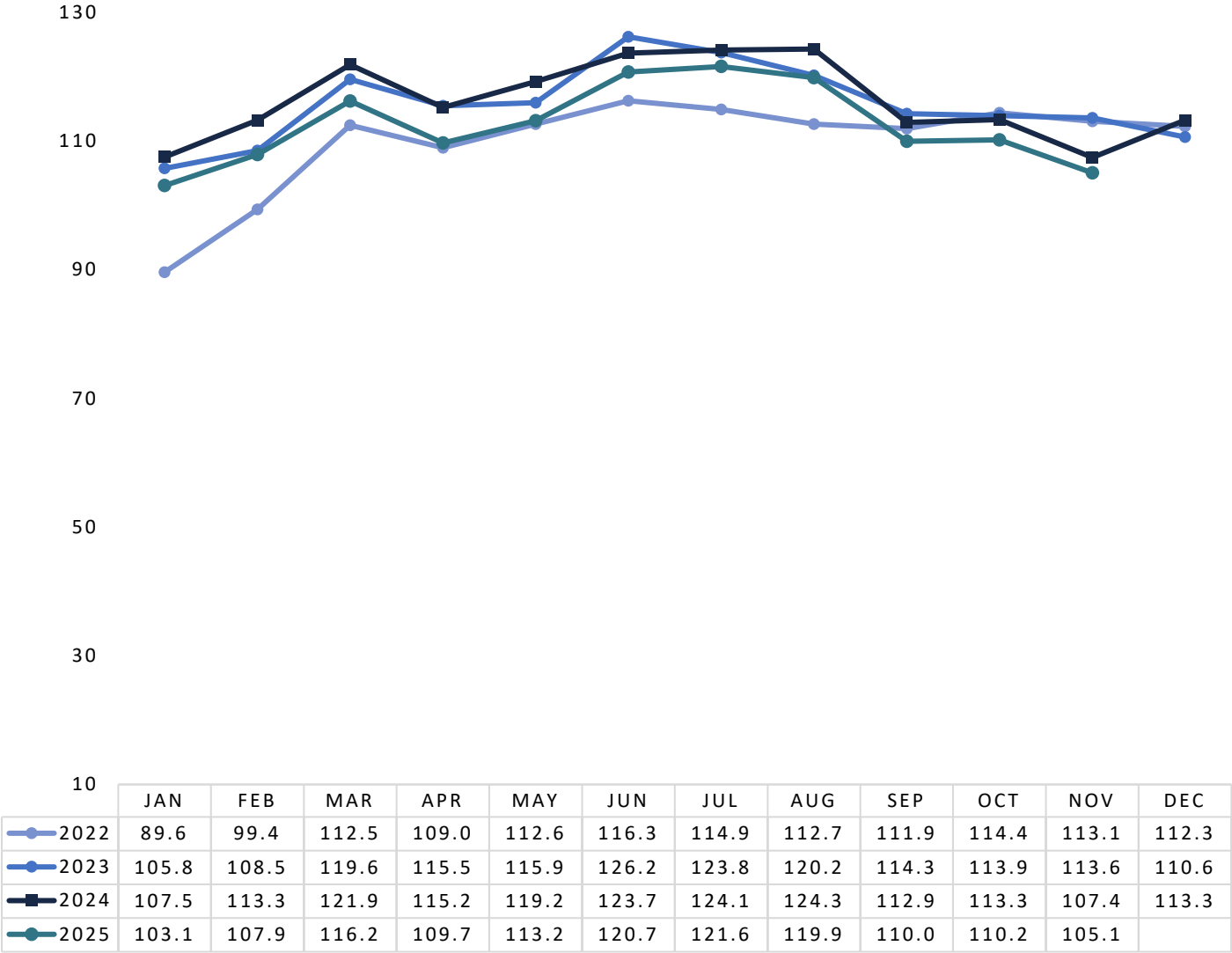
REGIONAL JET ACTIVITY



REGIONAL JET	TYPE	2021	2022	2023	2024	2025
	CRJ1	0.0%	0.0%	0.0%	0.0%	0.0%
	CRJ2	11.9%	8.5%	3.1%	0.3%	0.2%
	CRJ7	2.3%	1.7%	1.8%	3.8%	4.4%
	CRJ9	21.3%	12.4%	8.4%	8.4%	13.7%
	E135	0.0%	0.1%	0.0%	0.0%	0.0%
	E145	0.2%	0.3%	0.1%	0.3%	0.5%
	E170	7.3%	10.7%	11.8%	13.1%	11.8%
	E190	0.3%	0.4%	0.1%	0.1%	0.0%
	TOTAL	43.3%	34.2%	25.3%	26.1%	30.6%

MSP FLEET MIX REPORT

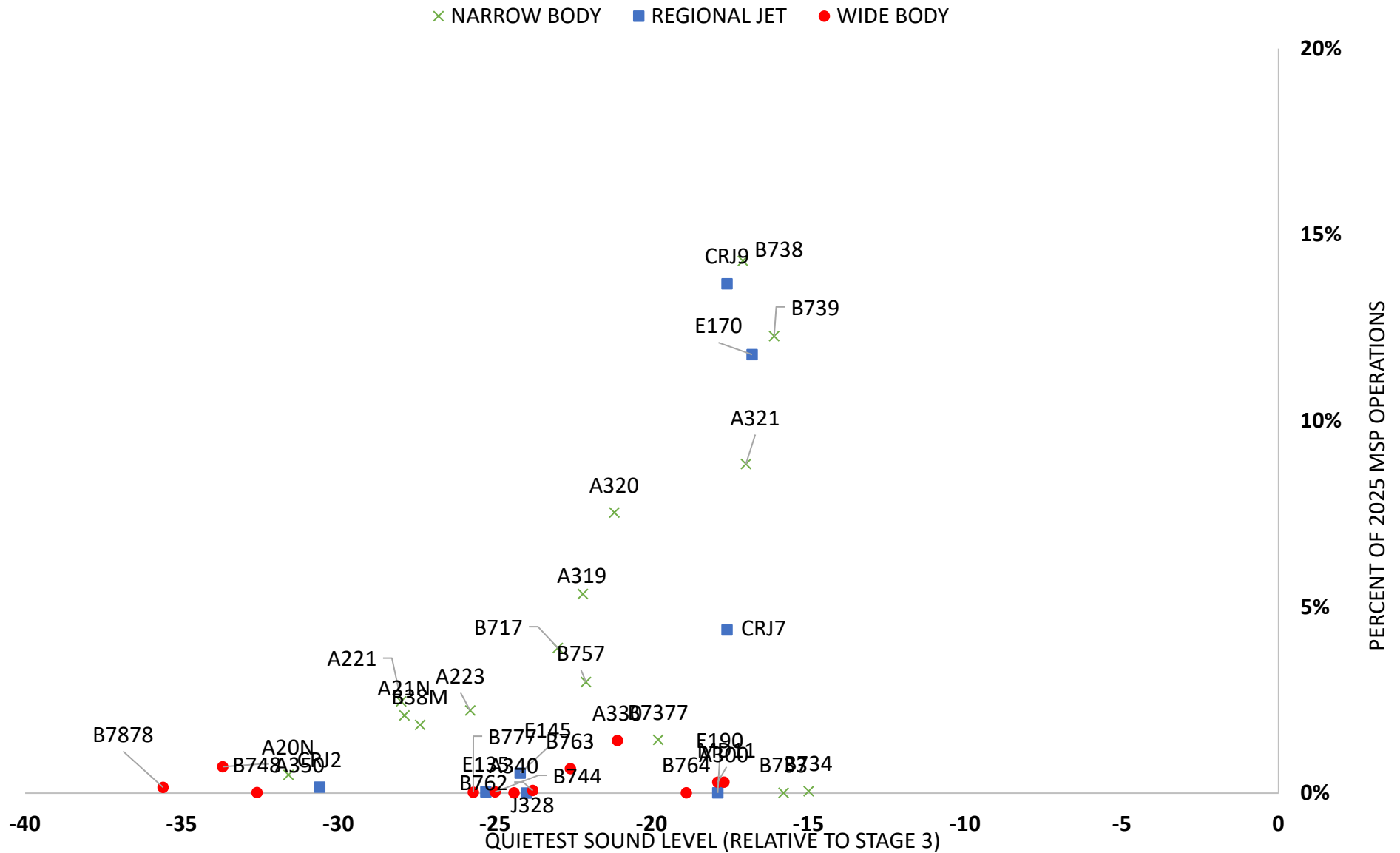
AVERAGE PASSENGERS PER FLIGHT



SOURCE: MSP MONTHLY OPERATIONS REPORTS

MSP FLEET MIX REPORT

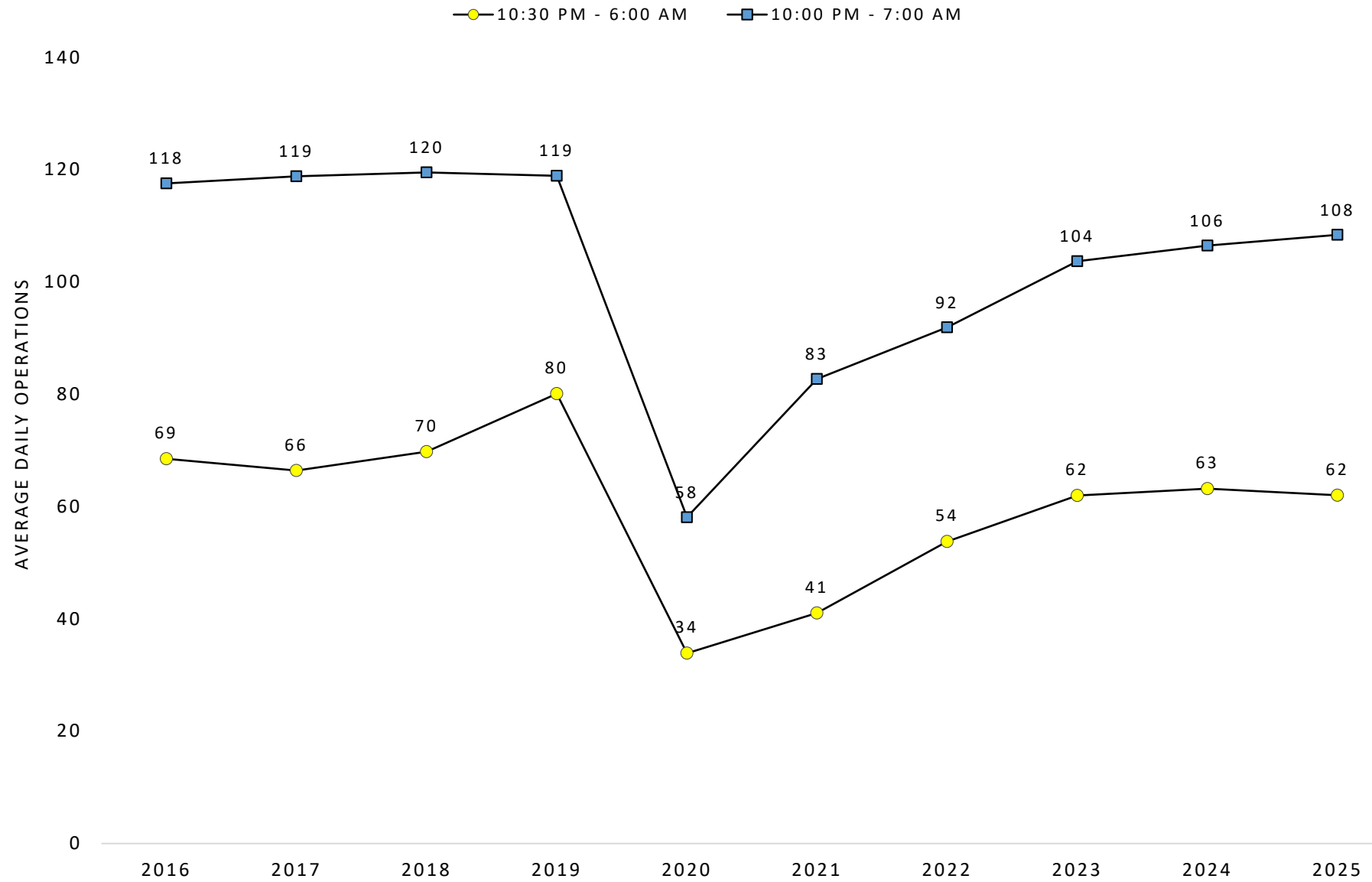
2025 MSP CARRIER JET USAGE WITH CUMULATIVE CERTIFICATED NOISE LEVELS



Source: USAGE DATA: MACNOMS; NOISE CERTIFICATION DATA: European Aviation Safety Agency

MSP NIGHTTIME OPERATIONS REPORT

AVERAGE DAILY NIGHTTIME OPERATIONS



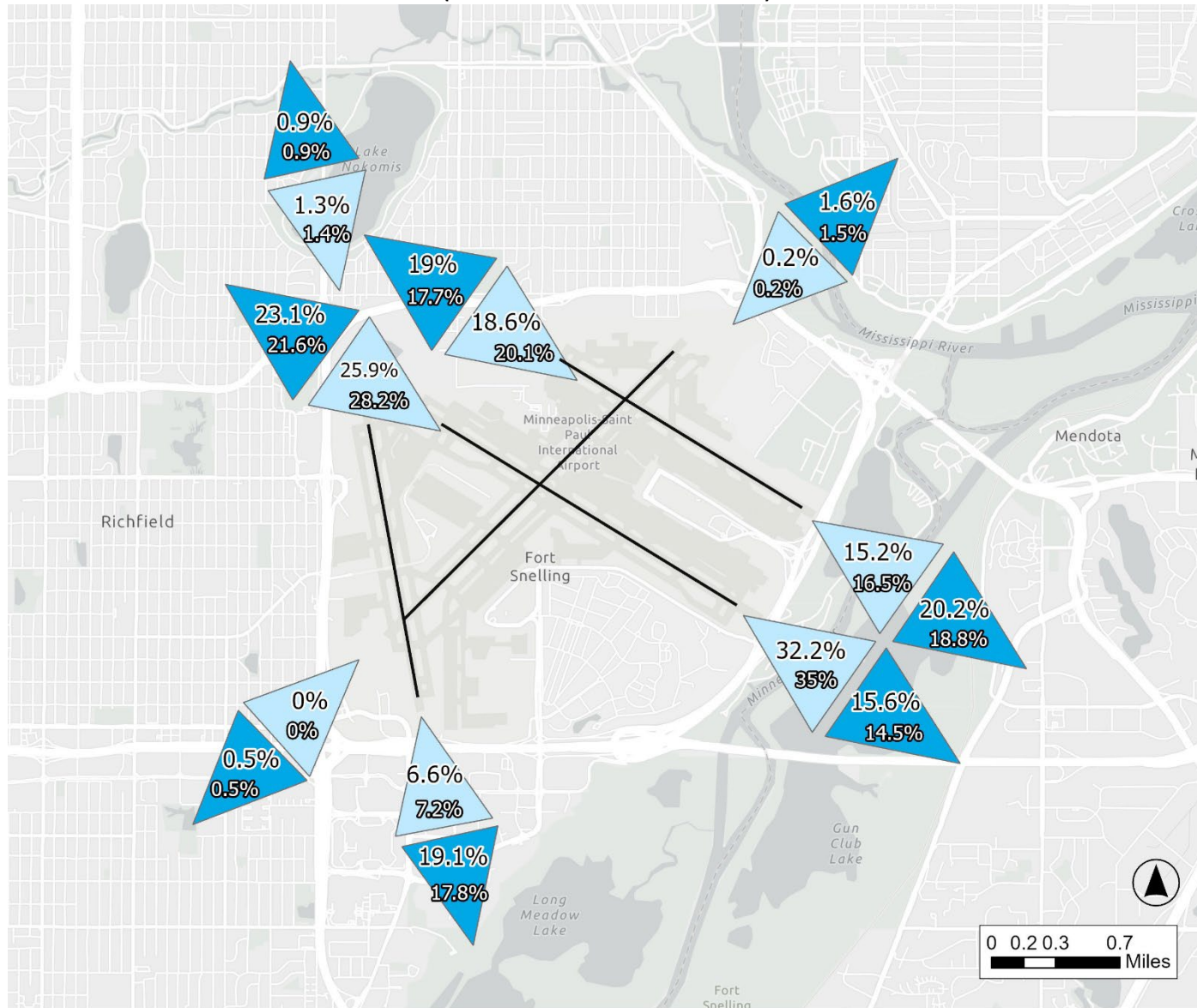
MSP NIGHTTIME OPERATIONS REPORT

2025 AND THREE-YEAR AVERAGE NIGHTTIME OPERATIONS BY RUNWAY
(10:30 PM – 6:00 AM)

			2025			2022 - 2024 AVERAGE		
RWY	ARR / DEP	OVERFLIGHT AREA	TOTAL NIGHT OPS	AVERAGE DAILY NIGHT OPS	%	TOTAL NIGHT OPS	AVERAGE DAILY NIGHT OPS	%
04	ARR	SO. RICHFIELD/BLOOMINGTON	0	0.0	0.0%	20	0.1	0.2%
12L	ARR	SO. MINNEAPOLIS/NO. RICHFIELD	925	2.5	5.6%	1,410	3.9	10.7%
12R	ARR	SO. MINNEAPOLIS/NO. RICHFIELD	5,812	15.9	35.3%	4,353	11.9	33.0%
17	ARR	SO. MINNEAPOLIS	227	0.6	1.4%	74	0.2	0.6%
22	ARR	ST. PAUL/HIGHLAND PARK	1	0.0	0.0%	19	0.1	0.1%
30L	ARR	EAGAN/MENDOTA HEIGHTS	5,807	15.9	35.3%	5,263	14.4	39.9%
30R	ARR	EAGAN/MENDOTA HEIGHTS	1,410	3.9	8.6%	1,588	4.3	12.0%
35	ARR	BLOOMINGTON/EAGAN	2,276	6.2	13.8%	457	1.3	3.5%
TOTAL NIGHTTIME ARRIVALS			16,411	45.0		15,117	41.4	
04	DEP	ST. PAUL/HIGHLAND PARK	101	0.3	1.6%	3	0.0	0.0%
12L	DEP	EAGAN/MENDOTA HEIGHTS	1,259	3.4	20.2%	867	2.4	13.0%
12R	DEP	EAGAN/MENDOTA HEIGHTS	970	2.7	15.6%	1,890	5.2	28.3%
17	DEP	BLOOMINGTON/EAGAN	1,189	3.3	19.1%	755	2.1	11.3%
22	DEP	SO. RICHFIELD/BLOOMINGTON	32	0.1	0.5%	5	0.0	0.1%
30L	DEP	SO. MINNEAPOLIS/NO. RICHFIELD	1,443	4.0	23.2%	2,089	5.7	31.3%
30R	DEP	SO. MINNEAPOLIS/NO. RICHFIELD	1,181	3.2	19.0%	1,024	2.8	15.3%
35	DEP	SO. MINNEAPOLIS	57	3.2	0.9%	49	0.1	0.7%
TOTAL NIGHTTIME DEPARTURES			6,232	20.2		6,682	18.2	
TOTAL NIGHTTIME OPERATIONS			22,643	65.2		21,799	59.6	

MSP NIGHTTIME OPERATIONS REPORT

2025 AND THREE-YEAR AVERAGE NIGHTTIME OPERATIONS BY RUNWAY MAP (10:30 PM – 6:00 AM)



MSP NIGHTTIME OPERATIONS REPORT

NIGHTTIME OPERATIONS BY AIRLINE
(TOP 15 BY COUNT)

2025	AIRLINE	ID	COUNT	PERCENT OF AIRLINE OPERATIONS OCCURRING AT NIGHT*	PERCENT OF CONTRIBUTION TO NIGHTTIME TOTAL [†]
	DELTA	DAL	7,784	5.3%	36.2%
	SUN COUNTRY	SCX	4,276	14.3%	19.9%
	SOUTHWEST	SWA	1,834	15.2%	8.5%
	AMERICAN	AAL	1,608	17.6%	7.5%
	SKYWEST AIRLINES	SKW	1,429	2.7%	6.6%
	UNITED	UAL	1,138	12.1%	5.3%
	UPS	UPS	667	26.3%	3.1%
	ENDEAVOR AIR	EDV	641	2.1%	3.0%
	FEDEX	FDX	475	28.3%	2.2%
	GULF & CARIBBEAN CARGO	TSU	375	97.7%	1.7%
	FRONTIER AIRLINES	FFT	372	19.1%	1.7%
	ALASKA	ASA	234	17.1%	1.1%
	PSA AIRLINES	JIA	228	13.0%	1.1%
	ENVOY AIR	ENY	216	11.5%	1.0%
	REPUBLIC AIRLINES	RPA	213	6.9%	1.0%

2024	AIRLINE	ID	COUNT	PERCENT OF AIRLINE OPERATIONS OCCURRING AT NIGHT*	PERCENT OF CONTRIBUTION TO NIGHTTIME TOTAL [†]
	DELTA	DAL	7,758	5.1%	35.0%
	SUN COUNTRY	SCX	4,909	15.6%	22.1%
	SOUTHWEST	SWA	1,826	12.5%	8.2%
	AMERICAN	AAL	1,722	18.6%	7.8%
	UNITED	UAL	1,663	15.8%	7.5%
	SKYWEST AIRLINES	SKW	1,462	2.8%	6.6%
	UPS	UPS	676	28.1%	3.0%
	FRONTIER AIRLINES	FFT	479	14.2%	2.2%
	FEDEX	FDX	443	21.2%	2.0%
	GULF & CARIBBEAN CARGO	TSU	373	97.9%	1.7%
	SPIRIT	NKS	345	14.8%	1.6%
	ALASKA	ASA	246	16.7%	1.1%
	ENDEAVOR AIR	EDV	157	1.0%	0.7%
	PSA AIRLINES	JIA	64	4.8%	0.3%
		CSB	45	12.9%	0.2%

*AIRLINE OPERATIONS OCCURRING AT NIGHT REPRESENTS THE PERCENTAGE OF RESPECTIVE AIRLINE SCHEDULE THAT OCCURS AT NIGHT

[†]CONTRIBUTION TO TOTAL IS RESPECTIVE AIRLINE CONTRIBUTIONS TO OVERALL MSP NIGHT OPERATIONS

MSP NIGHTTIME OPERATIONS REPORT

2025 NIGHTTIME OPERATIONS BY AIRCRAFT (TOP 15 BY COUNT)

AIRCRAFT CODE	DESCRIPTION	COUNT	NOISE LEVEL CERTIFICATION (EPNdB BELOW STAGE 3)
B738	BOEING 737-800	6,630	11.3 - 17.1
A321	AIRBUS INDUSTRIES A321	2,646	6.4 - 17
B739	BOEING 737-900	2,482	10.9 - 16.1
E170	EMBRAER 170	1,520	9.2 - 16.8
B757	BOEING 757-200	1,304	11.1 - 22.1
A320	AIRBUS INDUSTRIES A320	1,277	12.1 - 21.2
B38M	BOEING 737-8 MAX	1,019	24.3 - 27.4
CRJ9	CANADAIR REGIONAL JET CRJ-900	937	14.5 - 17.6
A319	AIRBUS INDUSTRIES A319	844	12.9 - 22.2
B763	BOEING 767-300	607	4.4 - 22.6
B7377	BOEING 737-700	475	11.6 - 19.8
CRJ2	CANADAIR REGIONAL JET CRJ-200	392	26.5 - 30.6
A330	AIRBUS INDUSTRIES A330	346	11.7 - 21.1
CRJ7	CANADAIR REGIONAL JET CRJ-700	319	14.5 - 17.6
A220	AIRBUS INDUSTRIES A220	312	25.5 - 28.0

NOISE CERTIFICATION DATA SOURCE: EUROPEAN AVIATION SAFETY AGENCY

CUMULATIVE CERTIFICATED NOISE LEVELS REPRESENTED AS A RANGE BELOW STAGE 3 NOISE LEVELS TO ACCOUNT FOR MULTIPLE CERTIFICATION VARIABLES (WEIGHT, MODEL, ENGINE TYPE, AIRFRAME CONFIGURATION, ETC)

MSP NIGHTTIME OPERATIONS REPORT

**2025 NIGHTTIME OPERATIONS BY ORIGIN AND DESTINATION
(TOP 15 BY COUNT)**

AIRPORT CODE	ORIGIN AIRPORT	COUNT
PHX	PHOENIX	1,212
DEN	DENVER	1,131
SEA	SEATTLE	1,056
LAS	LAS VEGAS	977
LAX	LOS ANGELES	857
ORD	CHICAGO O'HARE	770
SFO	SAN FRANCISCO	577
ATL	ATLANTA	493
PDX	PORTLAND	446
SDF	LOUISVILLE	422
MIA	MIAMI	408
MEM	MEMPHIS	391
DFW	DALLAS FORT WORTH	382
IAH	HOUSTON	366
MCO	ORLANDO	361

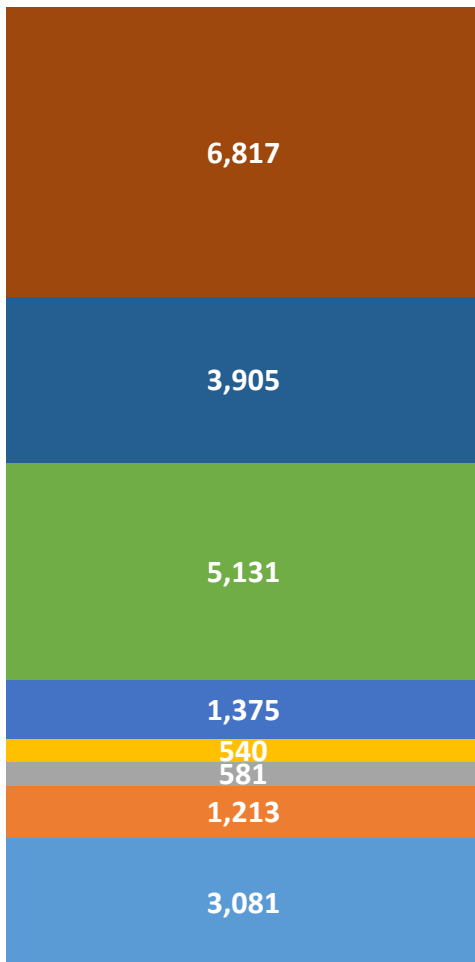
AIRPORT CODE	DESTINATION AIRPORT	COUNT
DEN	DENVER	528
ATL	ATLANTA	378
ORD	CHICAGO O'HARE	343
FAR	FARGO	270
STL	ST LOUIS	237
EGLL	LONDON HEATHROW	207
MDW	CHICAGO MIDWAY	206
RST	ROCHESTER MN	206
TVF	THEIF RIVER FALLS REGIONAL	180
PHX	PHOENIX	177
FSD	SIOUX FALLS	173
DLH	DULUTH	152
BZN	BOZEMAN	151
PANC	ANCHORAGE	146
GEG	SPOKANE	138

MSP NIGHTTIME OPERATIONS REPORT

NIGHTTIME OPERATIONS BY HOUR

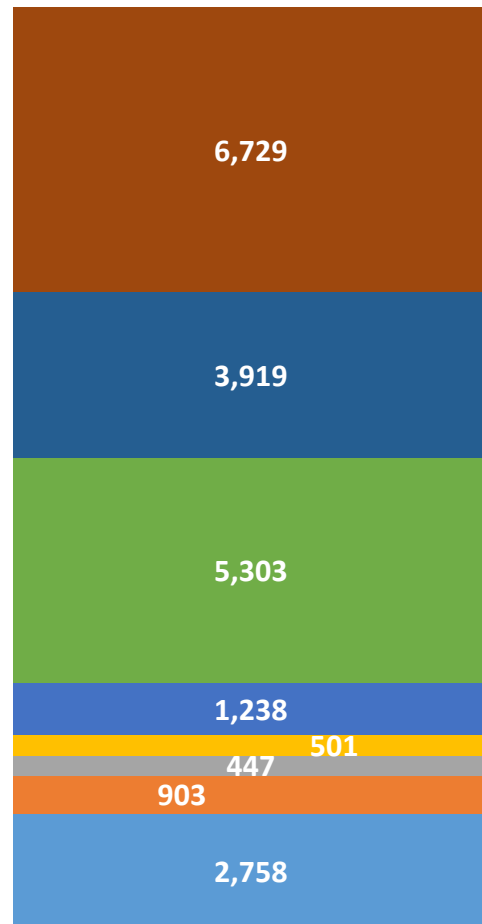
2025

0:00 1:00 2:00 3:00
4:00 5:00 22:30 23:00



3-YEAR HISTORICAL
AVERAGE

0:00 1:00 2:00 3:00
4:00 5:00 22:30 23:00

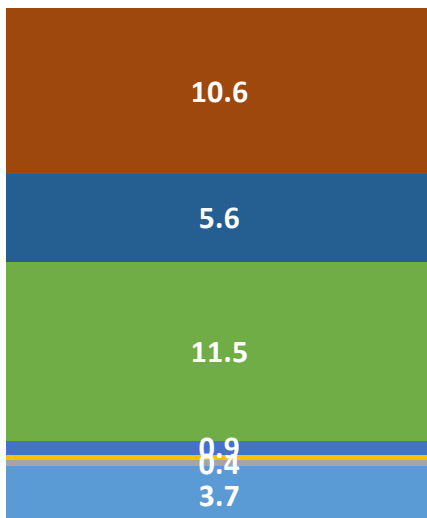


MSP NIGHTTIME OPERATIONS REPORT

SCHEDULED VERSUS ACTUAL OPERATIONS (AVERAGE BY HOUR)

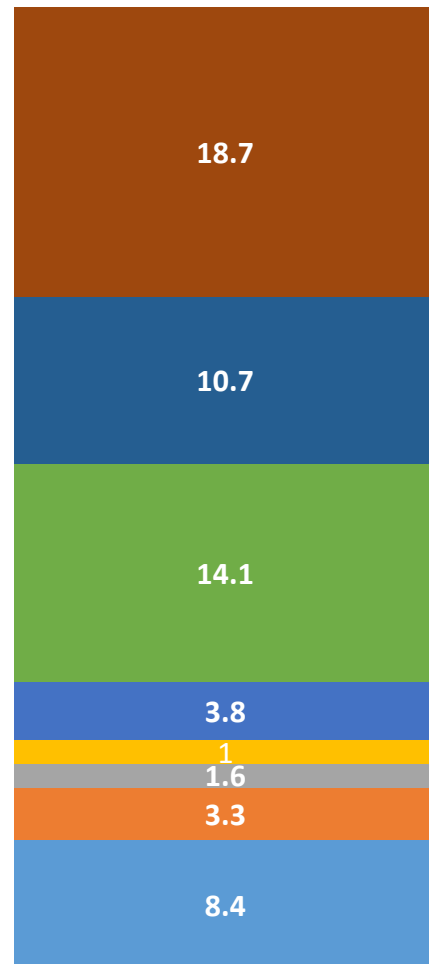
DAILY SCHEDULED NIGHT OPERATIONS

0:00 1:00 2:00 3:00
4:00 5:00 22:30 23:00



DAILY ACTUAL NIGHT OPERATIONS

0:00 1:00 2:00 3:00
4:00 5:00 22:30 23:00



GENERAL AVIATION AND CHARTER AIRCRAFT OPERATORS DO NOT REPORT SCHEDULED OPERATIONS



Metropolitan Airports Commission

6040 28th Avenue South, Minneapolis, MN 55450

metroairports.org

This report is for informational purposes only.