

April 2017

Noise Oversight Committee (NOC) Technical Advisor's Report



Minneapolis-St. Paul International Airport



Table of Contents for April 2017

Complaint Summary	1
Noise Complaint Map	2
FAA Available Time for Runway Usage	3
MSP All Operations Runway Usage	4
MSP Carrier Jet Operations Runway Usage	5
MSP Carrier Jet Fleet Composition	6
MSP All Operations Nighttime Runway Usage	7
MSP Carrier Jet Operations Nighttime Runway Usage	8
MSP Scheduled Nighttime Operators	9-11
MSP Top 15 Nighttime Operators by Type	12
MSP Top 15 Nighttime Operators Stage Mix	13
Airport Noise and Operations Monitoring System Flight Tracks	14-17
MSP Remote Monitoring Tower Site Locations Map	18
Time Above dB Threshold for Carrier Jet Arrival Related Noise Events	19
Time Above dB Threshold for Carrier Jet Departure Related Noise Events	20
Carrier Jet Arrival Related Noise Events	21
Carrier Jet Departure Related Noise Events	22
MSP Top Ten Aircraft Noise Events per RMT	23-35
Analysis of Daily and Monthly Aircraft Noise Events DNL	36-42

MSP Complaints by City April 2017

City	Arrival		Departure		Other		Number of Complaints	Number of Locations	% of Total Complaints
MINNEAPOLIS	6	1599	13	834	90	2854	5396	183	38.8%
INVER GROVE HEIGHTS	0	855	0	162	2	2437	3456	7	24.9%
EAGAN	0	10	1	968	13	1196	2188	45	15.7%
RICHFIELD	0	1	26	389	118	63	597	34	4.3%
MENDOTA HEIGHTS	0	0	2	72	244	63	381	20	2.7%
EDEN PRAIRIE	0	223	0	25	0	49	297	5	2.1%
GOLDEN VALLEY	0	55	0	2	0	237	294	4	2.1%
EDINA	0	13	2	145	36	94	290	40	2.1%
COTTAGE GROVE	0	0	0	0	0	270	270	1	1.9%
BLOOMINGTON	0	0	0	215	20	10	245	11	1.8%
APPLE VALLEY	0	45	0	76	3	11	135	12	1%
ST. LOUIS PARK	0	91	0	1	0	5	97	8	0.7%
BURNSVILLE	0	0	4	72	1	9	86	13	0.6%
MINNETONKA	0	62	0	2	2	1	67	5	0.5%
LAKEVILLE	0	28	0	0	0	4	32	1	0.2%
FALCON HEIGHTS	0	10	0	4	0	5	19	1	0.1%
SAINT PAUL	0	2	0	4	1	9	16	6	0.1%
SHOREWOOD	0	0	0	0	0	10	10	1	0.1%
PLYMOUTH	0	0	0	0	0	10	10	1	0.1%
WEST ST PAUL	0	0	0	5	0	0	5	1	0%
ROSEMOUNT	0	0	0	0	0	5	5	1	0%
MOUNDS VIEW	0	0	0	0	0	3	3	1	0%
ORONO	0	2	0	0	0	0	2	1	0%
TONKA BAY	0	0	0	0	0	2	2	1	0%
OTHER	0	0	0	2	1	1	4	4	0%
Total	3002		3026		7879		13907	407	

Nature of MSP Complaints		
Complaint	Total	
Early/Late	82	4042
Engine Run-up	0	302
Excessive Noise	553	13085
Frequency	256	12509
Ground Noise	7	224
Helicopter	3	72
Low Flying	34	8987
Structural Disturbance	6	2931
Other	7	482
Total	43582	

Time of Day		
Time	Total	
0000-0559	48	587
0600-0659	46	437
0700-1159	153	3466
1200-1559	40	2113
1600-1959	75	2712
2000-2159	152	2375
2200-2259	56	1210
2300-2359	15	422
Total	13907	

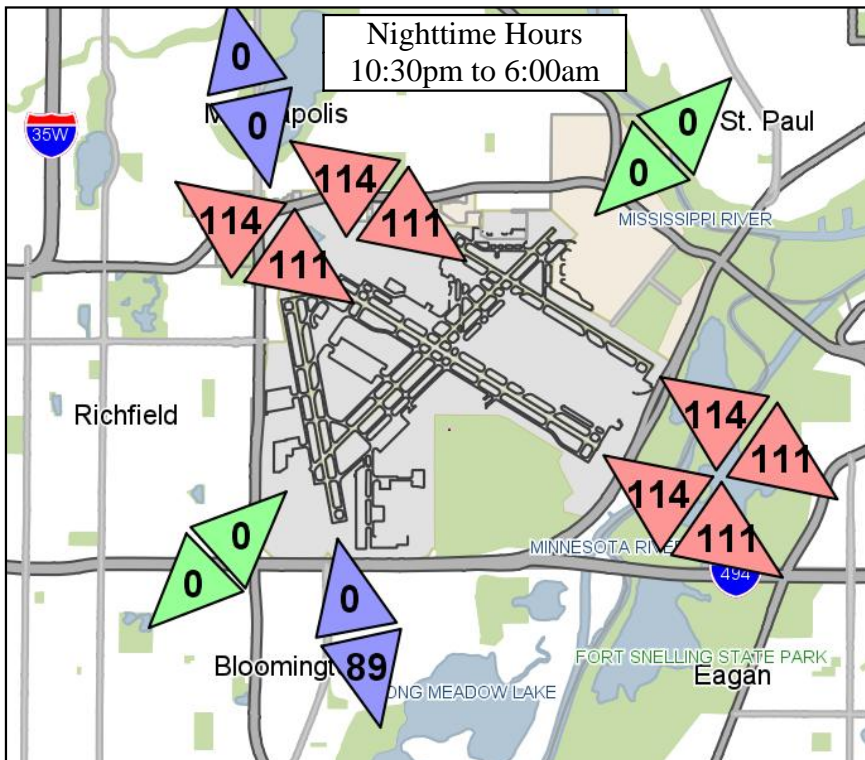
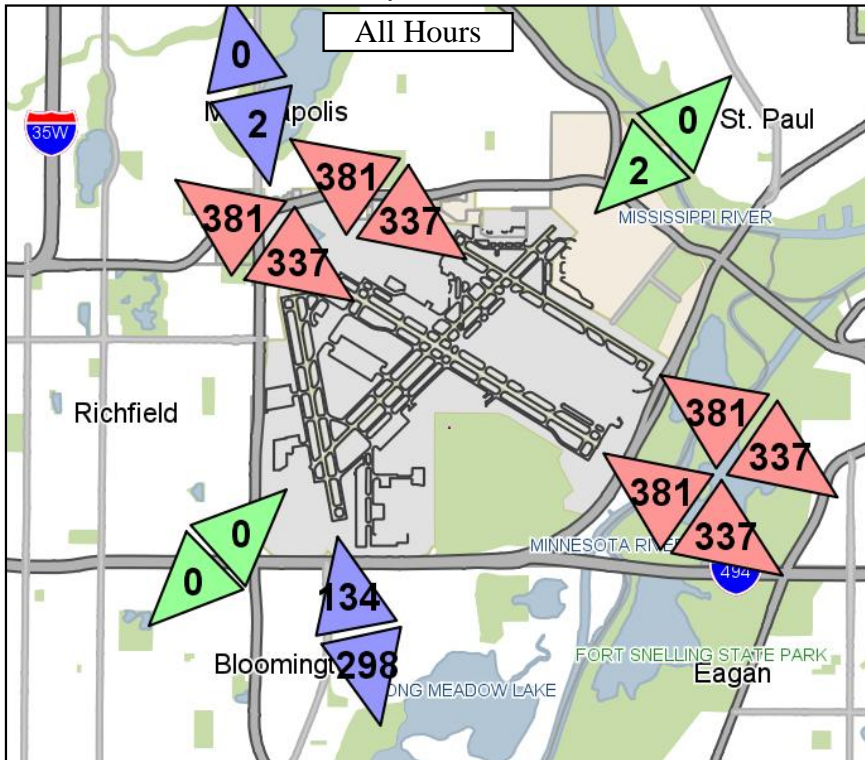
Complaints by Airport	
Airport	Total
MSP	13907
Airlake	1
Anoka	79
Crystal	4
Flying Cloud	306
Lake Elmo	5
St. Paul	17
Misc.	168
Total	14487

Note: Shaded Columns represent MSP complaints filed via the Internet.
Sum of % Total of Complaints may not equal 100% due to rounding.
*As of May 2005, the MSP Complaints by City report includes multiple complaint descriptors per individual complaint. Therefore, the number of complaint descriptors may be more than the number of reported complaints.

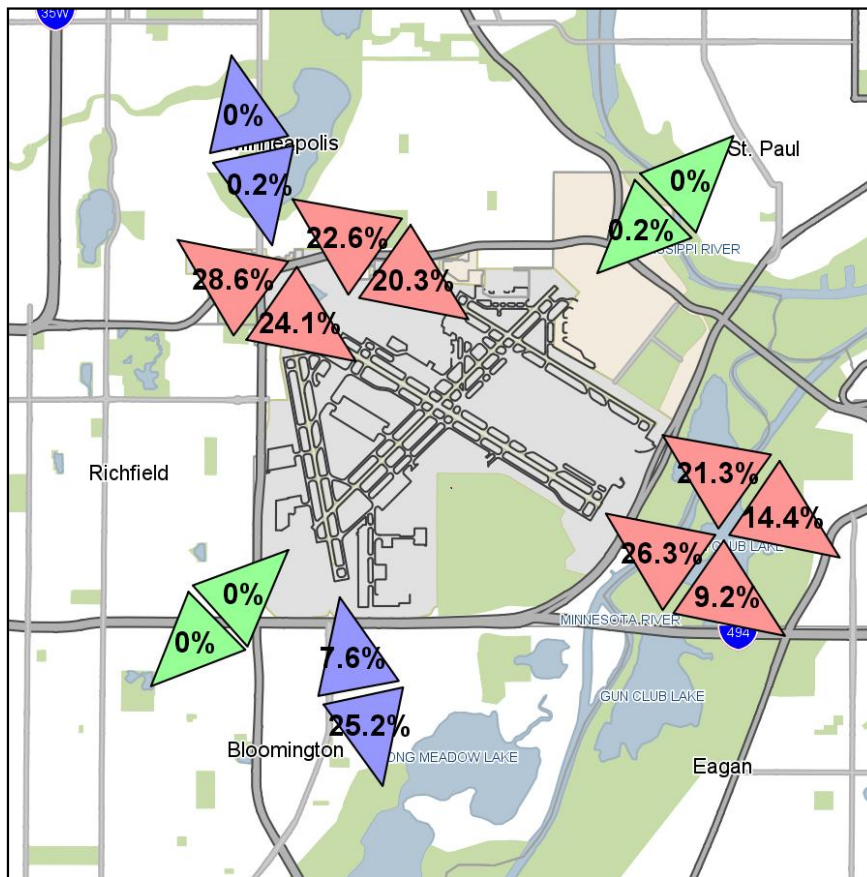
Available Hours for Runway Use

April 2017

(Source: FAA Aviation Systems Performance Metrics Data)



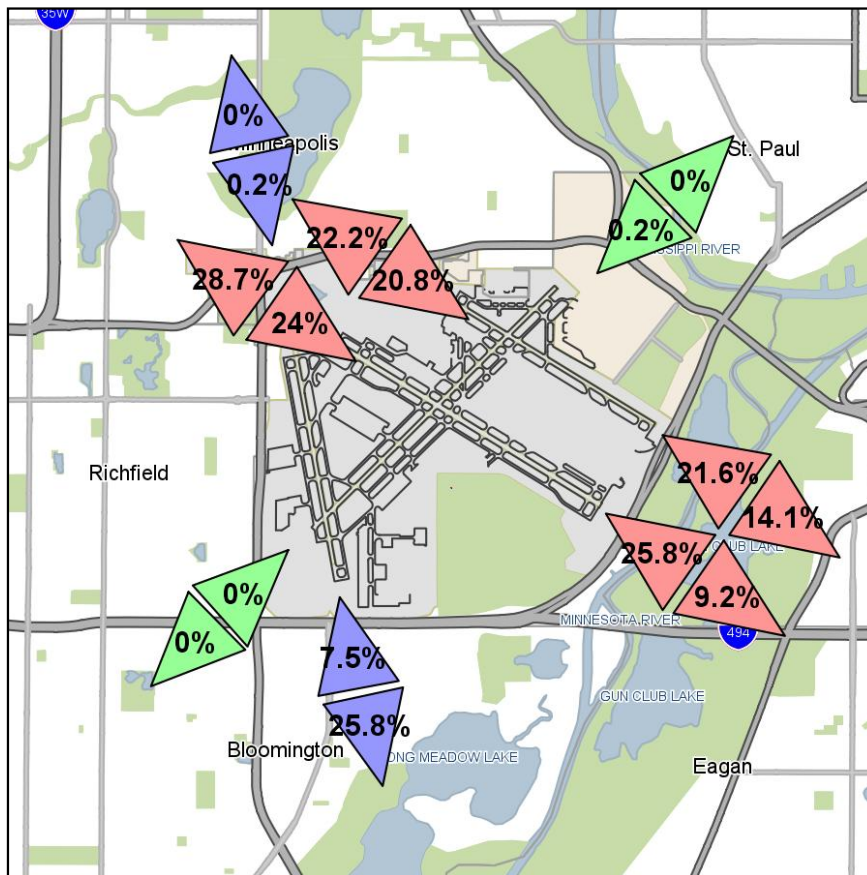
All Operations Runway Use Report April 2017



RWY	Arrival/ Departure	Overflight Area	Count Operations	Percent	Last Year Count	Last Year Percent
04	Arr	So. Richfield/Bloomington	0	0%	0	0%
12L	Arr	So. Minneapolis/No. Richfield	3450	20.3%	4994	30%
12R	Arr	So. Minneapolis/No. Richfield	4097	24.1%	5775	34.7%
17	Arr	So. Minneapolis	37	0.2%	0	0%
22	Arr	St. Paul/Highland Park	39	0.2%	1	0%
30L	Arr	Eagan/Mendota Heights	4461	26.3%	3050	18.3%
30R	Arr	Eagan/Mendota Heights	3624	21.3%	2451	14.7%
35	Arr	Bloomington/Eagan	1284	7.6%	387	2.3%
Total Arrivals			16992		16658	
RWY	Arrival/ Departure	Overflight Area	Count Operations	Percent	Last Year Count	Last Year Percent
04	Dep	St. Paul/Highland Park	3	0%	2	0%
12L	Dep	Eagan/Mendota Heights	2437	14.4%	3523	21.2%
12R	Dep	Eagan/Mendota Heights	1560	9.2%	2237	13.4%
17	Dep	Bloomington/Eagan	4282	25.2%	5309	31.9%
22	Dep	So. Richfield/Bloomington	5	0%	15	0.1%
30L	Dep	So. Minneapolis/No. Richfield	4858	28.6%	2946	17.7%
30R	Dep	So. Minneapolis/No. Richfield	3834	22.6%	2603	15.6%
35	Dep	So. Minneapolis	0	0%	0	0%
Total Departures			16979		16635	
Total Operations			33971		33293	

Sum of RUS % may not equal 100% due to rounding.

Carrier Jet Operations Runway Use Report April 2017



RWY	Arrival/ Departure	Overflight Area	Count Operations	Percent	Last Year Count	Last Year Percent
04	Arr	So. Richfield/Bloomington	0	0%	0	0%
12L	Arr	So. Minneapolis/No. Richfield	3241	20.8%	4728	30.6%
12R	Arr	So. Minneapolis/No. Richfield	3742	24%	5280	34.2%
17	Arr	So. Minneapolis	36	0.2%	0	0%
22	Arr	St. Paul/Highland Park	33	0.2%	0	0%
30L	Arr	Eagan/Mendota Heights	4021	25.8%	2779	18%
30R	Arr	Eagan/Mendota Heights	3372	21.6%	2295	14.9%
35	Arr	Bloomington/Eagan	1167	7.5%	369	2.4%
Total Arrivals			15612		15451	
RWY	Arrival/ Departure	Overflight Area	Count Operations	Percent	Last Year Count	Last Year Percent
04	Dep	St. Paul/Highland Park	1	0%	0	0%
12L	Dep	Eagan/Mendota Heights	2207	14.1%	3170	20.5%
12R	Dep	Eagan/Mendota Heights	1441	9.2%	2056	13.3%
17	Dep	Bloomington/Eagan	4023	25.8%	5026	32.6%
22	Dep	So. Richfield/Bloomington	1	0%	1	0%
30L	Dep	So. Minneapolis/No. Richfield	4471	28.7%	2747	17.8%
30R	Dep	So. Minneapolis/No. Richfield	3456	22.2%	2430	15.7%
35	Dep	So. Minneapolis	0	0%	0	0%
Total Departures			15600		15430	
Total Operations			31212		30881	

Sum of RUS % may not equal 100% due to rounding.

April 2017 MSP Carrier Jet Fleet Composition

Type	FAR Part 36 Take-Off Noise Level ¹	Aircraft Description	Stage	Count	Percent
DC10	101.8	McDonnell Douglas DC10	3	17	0.1%
B744	101.6	Boeing 747-400	3	2	0%
B777	96.2	Boeing 777	3	127	0.4%
B763	95.7	Boeing 767-300	3	67	0.2%
A330	95.6	Airbus Industries A330	3	266	0.9%
A310	92.9	Airbus Industries A310	3	1	0%
MD11	92.8	McDonnell Douglas MD11	3	209	0.7%
B762	92.1	Boeing 767-200	3	40	0.1%
MD80	91.5	McDonnell Douglas MD80	3	1665	5.3%
A300	91.5	Airbus Industries A300	3	4	0%
B757	91.4	Boeing 757-200	3	1867	6%
B764	91.2	Boeing 767-400	3	2	0%
A321	89.8	Airbus Industries A321	3	234	0.7%
B734	88.9	Boeing 737-400	3	12	0%
B738	88.6	Boeing 737-800	3	3386	10.8%
B739	88.4	Boeing 737-900	3	1504	4.8%
A320	87.8	Airbus Industries A320	3	1743	5.6%
B735	87.7	Boeing 737-500	3	2	0%
B733	87.5	Boeing 737-300	3	185	0.6%
A319	87.4	Airbus Industries A319	3	2218	7.1%
E190	86.9	Embraer 190	3	120	0.4%
B7377	85.9	Boeing 737-700	3	1626	5.2%
CRJ9	84.6	Canadair Regional Jet CRJ-900	3	4105	13.2%
E170	84.6	Embraer 170	3	2132	6.8%
MD90	84.2	McDonnell Douglas MD90	3	2396	7.7%
B717	84.1	Boeing 717	3	1098	3.5%
E145	83.7	Embraer 145	3	20	0.1%
CRJ7	83.2	Canadair Regional Jet CRJ-700	3	1376	4.4%
CRJ1	79.8	Canadair Regional Jet CRJ-100	3	40	0.1%
CRJ2	78.7	Canadair Regional Jet CRJ-200	3	4740	15.2%
E135	77.9	Embraer 135	3	8	0%
Totals				31212	

Sum of fleet mix % may not equal 100% due to rounding.

	Count	Current Percent	Last Year Percent ²
Stage 2	0	0%	0%
Stage 3	0	0%	0%
Stage 3 Manufactured	31212	100%	100%
Total Stage 3	31212		

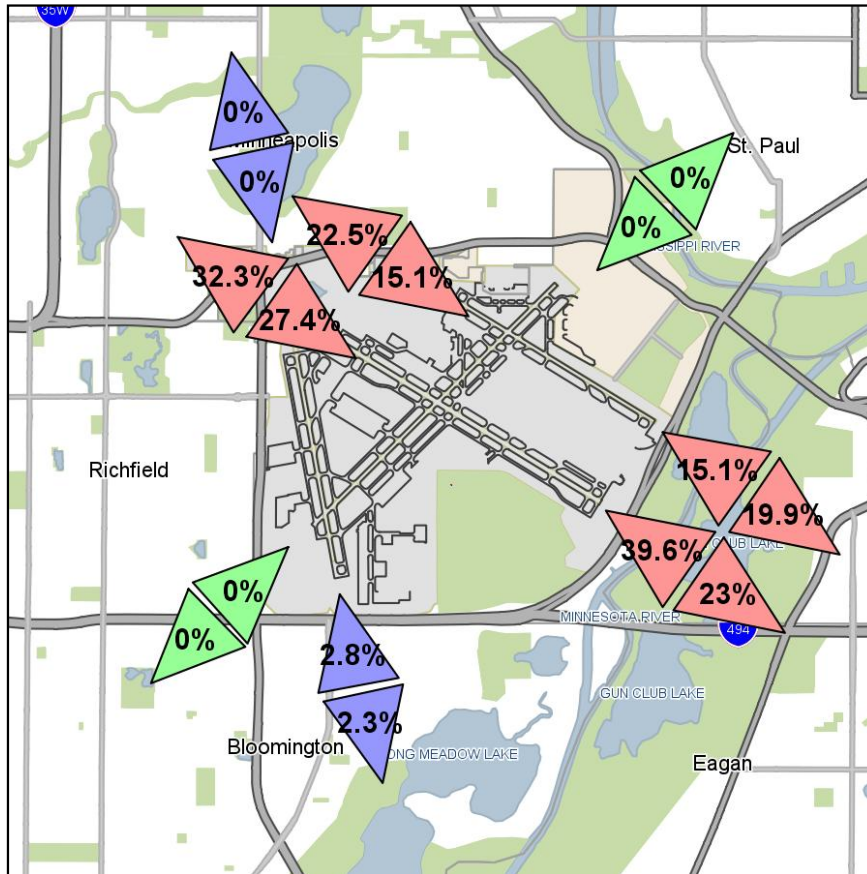
NOTE 1: Stage 3 represent aircraft modified to meet all Stage 3 criteria as outlined in Federal Aviation Regulation (FAR) Part 36. This includes hushkit engines, engine retrofits or aircraft operational flight configurations.

-The Provided Noise levels from FAR Part 36 are the loudest levels documented for the representative aircraft type during take-off measured in EPNL dBA (Effective Perceived Noise Level).

-EPNL is the level of the time integral of the antilogarithm of one-tenth of tone-corrected perceived noise level of an aircraft flyover measured in A-weighted decibels.

NOTE 2: Due to flight tracking data enhancements, the air carrier operations counts for Last Year included in this report have been updated to reflect revised aircraft type counts. Please refer to the interactive reports at www.macnoise.com for detailed information regarding aircraft types.

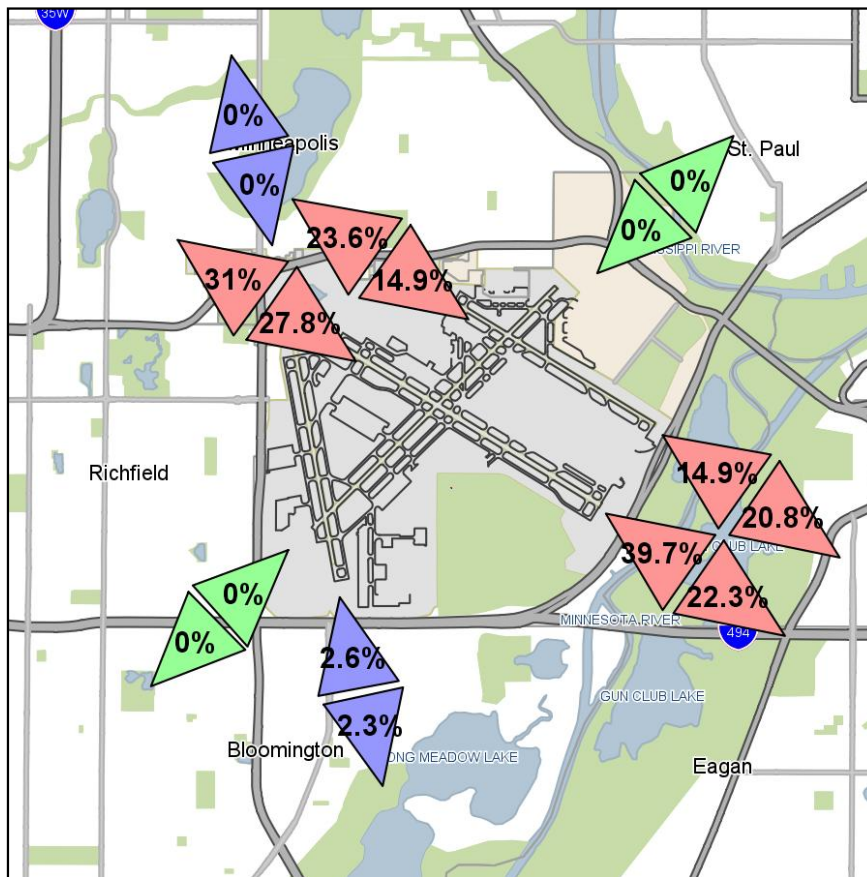
Nighttime All Operations 10:30 p.m. to 6:00 a.m. Runway Use Report April 2017



RWY	Arrival/ Departure	Overflight Area	Count Operations	Percent	Last Year Count	Last Year Percent
04	Arr	So. Richfield/Bloomington	0	0%	0	0%
12L	Arr	So. Minneapolis/No. Richfield	239	15.1%	289	20.3%
12R	Arr	So. Minneapolis/No. Richfield	432	27.4%	588	41.3%
17	Arr	So. Minneapolis	0	0%	0	0%
22	Arr	St. Paul/Highland Park	0	0%	0	0%
30L	Arr	Eagan/Mendota Heights	626	39.6%	391	27.5%
30R	Arr	Eagan/Mendota Heights	238	15.1%	156	11%
35	Arr	Bloomington/Eagan	44	2.8%	0	0%
Total Arrivals			1579		1424	
RWY	Arrival/ Departure	Overflight Area	Count Operations	Percent	Last Year Count	Last Year Percent
04	Dep	St. Paul/Highland Park	0	0%	2	0.4%
12L	Dep	Eagan/Mendota Heights	112	19.9%	98	21.8%
12R	Dep	Eagan/Mendota Heights	130	23%	174	38.7%
17	Dep	Bloomington/Eagan	13	2.3%	24	5.3%
22	Dep	So. Richfield/Bloomington	0	0%	0	0%
30L	Dep	So. Minneapolis/No. Richfield	182	32.3%	98	21.8%
30R	Dep	So. Minneapolis/No. Richfield	127	22.5%	54	12%
35	Dep	So. Minneapolis	0	0%	0	0%
Total Departures			564		450	
Total Operations			2143		1874	

Sum of RUS % may not equal 100% due to rounding.

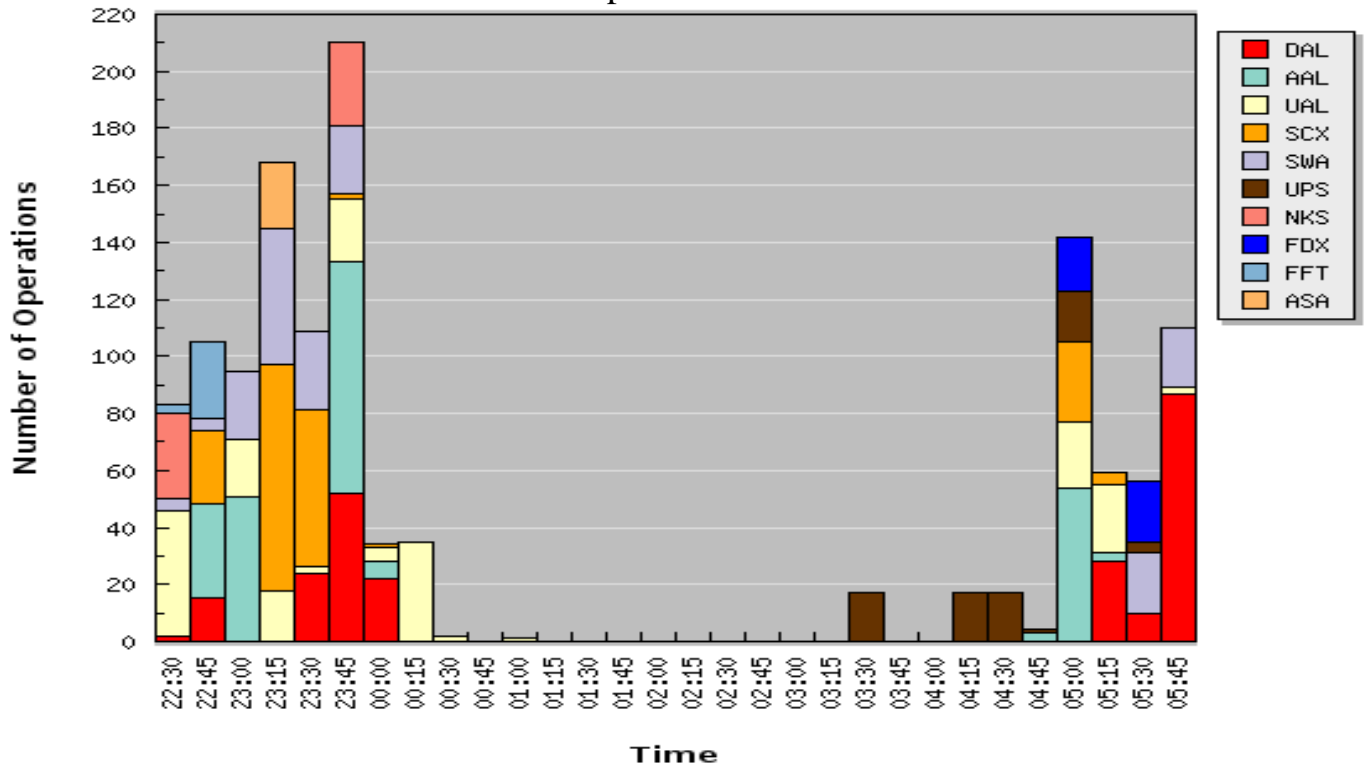
Nighttime Carrier Jet Operations 10:30 p.m. to 6:00 a.m. Runway Use Report April 2017



RWY	Arrival/ Departure	Overflight Area	Count Operations	Percent	Last Year Count	Last Year Percent
04	Arr	So. Richfield/Bloomington	0	0%	0	0%
12L	Arr	So. Minneapolis/No. Richfield	226	14.9%	272	20.3%
12R	Arr	So. Minneapolis/No. Richfield	421	27.8%	560	41.8%
17	Arr	So. Minneapolis	0	0%	0	0%
22	Arr	St. Paul/Highland Park	0	0%	0	0%
30L	Arr	Eagan/Mendota Heights	600	39.7%	359	26.8%
30R	Arr	Eagan/Mendota Heights	225	14.9%	150	11.2%
35	Arr	Bloomington/Eagan	40	2.6%	0	0%
Total Arrivals			1512		1341	
RWY	Arrival/ Departure	Overflight Area	Count Operations	Percent	Last Year Count	Last Year Percent
04	Dep	St. Paul/Highland Park	0	0%	0	0%
12L	Dep	Eagan/Mendota Heights	109	20.8%	98	24.1%
12R	Dep	Eagan/Mendota Heights	117	22.3%	149	36.6%
17	Dep	Bloomington/Eagan	12	2.3%	20	4.9%
22	Dep	So. Richfield/Bloomington	0	0%	0	0%
30L	Dep	So. Minneapolis/No. Richfield	163	31%	88	21.6%
30R	Dep	So. Minneapolis/No. Richfield	124	23.6%	52	12.8%
35	Dep	So. Minneapolis	0	0%	0	0%
Total Departures			525		407	
Total Operations			2037		1748	

Sum of RUS % may not equal 100% due to rounding.

May 2017 Nighttime Scheduled Carrier Jet Operations
10:30 p.m. to 6:00 a.m.



May 2017 Nighttime Scheduled Carrier Jet Operations
10:30 p.m. to 6:00 a.m.

Airline	Stage 2	Stage 3	Manufactured Stage 3	Total
Delta (DAL)	0	0	240	240
American (AAL)	0	0	231	231
United (UAL)	0	0	198	198
Sun Country (SCX)	0	0	195	195
Southwest (SWA)	0	0	174	174
UPS (UPS)	0	0	74	74
Spirit (NKS)	0	0	59	59
Fedex (FDX)	0	0	40	40
Frontier Airlines (FFT)	0	0	30	30
Alaska (ASA)	0	0	23	23
Total	0	0	1264	1264

May 2017 Nighttime Scheduled Carrier Jet Operations

Time	A/D	Carrier	Flight Number	Equipment	Stage 3	Days of Operation	Routing
22:34	A	United	627	A320	M	Su	ORD MSP
22:35	A	United	627	B739	M	S	DCA ORD MSP
22:35	A	United	627	B739	M	MTWThFS	ORD MSP
22:36	D	Spirit	763	A320	M	MTWThFSSu	ORD MSP LAS
22:37	D	Spirit	763	A320	M	MTWThFSSu	ORD MSP LAS
22:37	D	Frontier Airlines	329	A319	M	MTW	MSP DEN
22:40	A	Southwest	4285	738	M	S	SJC PHX MSP
22:41	A	United	6007	E170	M	MT	IAH MSP
22:43	A	United	627	A320	M	WTh	ORD MSP
22:43	A	United	1228	A320	M	MTWThFSu	IAH MSP
22:44	A	Delta	356	B753	M	S	LIR ATL MSP
22:45	D	Delta	1099	B757	M	Su	MSP ANC
22:46	A	Delta	356	B753	M	MThFSu	LIR ATL MSP
22:50	D	Frontier Airlines	329	A319	M	M	MSP DEN
22:54	A	American	239	B738	M	MTWTh	DFW MSP
22:54	A	American	239	B738	M	MTWThFSSu	FCO DFW MSP
22:55	A	Southwest	1110	B737	M	S	RSW MDW MSP
22:55	A	Sun Country	286	B737	M	MTWThFSu	SEA MSP
22:55	A	Sun Country	286	B738	M	W	SEA MSP
22:55	D	Frontier Airlines	329	A319	M	MTWThFSSu	MSP DEN
22:59	A	American	4678	E175	M	MTW	MIA MSP
23:03	A	American	4678	E175	M	MTWThFSSu	MIA MSP
23:04	A	United	5397	E170	M	F	LAX MSP
23:04	A	United	5593	E170	M	MTWThFSu	LAX MSP
23:05	A	Southwest	499	B737	M	M	MCO STL MSP
23:05	A	Southwest	494	B737	M	MTWThF	STL MSP
23:05	A	Southwest	48	738	M	Su	MCO STL MSP
23:06	A	American	2355	B738	M	MTWThFSu	ORD MSP
23:15	A	Southwest	101	B737	M	M	CMH MDW MSP
23:15	A	Sun Country	248	B738	M	MThFSu	JFK MSP
23:15	A	Southwest	101	B737	M	MTWThF	MDW MSP
23:17	A	Alaska	28	B739	M	Th	SEA MSP
23:17	A	Alaska	28	B737	M	MWS	SEA MSP
23:18	A	United	669	B738	M	M	SMF DEN MSP
23:18	A	United	669	B739	M	MTWThFSu	SMF DEN MSP
23:19	A	United	669	B739	M	Su	SMF DEN MSP
23:19	A	Sun Country	346	B737	M	S	MCO MSP
23:20	A	United	669	B739	M	Th	SMF DEN MSP
23:22	A	Sun Country	426	B738	M	MTWThFSSu	LAX MSP
23:22	A	Sun Country	426	B737	M	MTWThFS	LAX MSP
23:23	A	United	669	A319	M	M	SMF DEN MSP
23:24	A	Alaska	28	738	M	MWFSSu	SEA MSP
23:24	A	Alaska	28	B739	M	TS	SEA MSP
23:24	A	Alaska	28	B737	M	MTWThFSSu	SEA MSP
23:25	A	Southwest	2417	738	M	Su	PHX MDW MSP
23:25	A	Southwest	6546	B737	M	Su	MDW MSP
23:25	A	Southwest	1800	B737	M	MTWThF	ABQ DEN MSP
23:27	A	Sun Country	106	B738	M	MTWThFSSu	LAS MSP
23:28	A	United	669	B739	M	WTh	SMF DEN MSP
23:29	A	United	669	B739	M	T	SMF DEN MSP

May 2017 Nighttime Scheduled Carrier Jet Operations

Time	A/D	Carrier	Flight Number	Equipment	Stage 3	Days of Operation	Routing
23:30	A	United	669	B739	M	T	SMF DEN MSP
23:30	A	Delta	2060	MD90	M	Su	LAS MSP
23:30	A	Sun Country	254	B738	M	ThSu	BOS MSP
23:31	A	Delta	1371	B739	M	ThFSu	LAX MSP
23:31	A	Delta	2060	B739	M	MThFSu	LAS MSP
23:32	A	United	669	B739	M	T	SMF DEN MSP
23:33	A	Sun Country	396	B738	M	MTWThFSu	SFO MSP
23:35	A	Southwest	3676	B737	M	MTWThF	SAN PHX MSP
23:35	A	Southwest	3113	B737	M	Su	DEN MSP
23:35	A	Southwest	478	B737	M	M	SJC PHX MSP
23:38	A	Sun Country	236	B737	M	MTWThFSu	DCA MSP
23:38	A	Sun Country	236	B738	M	MTF	DCA MSP
23:40	A	Southwest	2172	738	M	Su	AUS ATL MSP
23:47	A	American	4636	E175	M	MTWThFSu	DCA MSP
23:54	A	United	6202	E170	M	Su	IAD MSP
23:54	A	Delta	2842	B739	M	MTThFSu	SLC MSP
23:55	A	Southwest	239	B737	M	MTWThF	ATL MSP
23:55	A	Southwest	5233	B737	M	Su	SFO PHX MSP
23:55	A	Southwest	239	738	M	MTWTh	ATL MSP
23:55	A	Southwest	995	B737	M	Su	SFO PHX MSP
23:56	A	American	1744	A321	M	MTW	LAS PHX MSP
23:56	A	American	2039	A320	M	Su	FLL CLT MSP
23:56	A	American	1119	B738	M	MTWThFSSu	SNA PHX MSP
23:56	A	Delta	2842	MD90	M	W	SLC MSP
23:56	A	American	2039	A320	M	MTWThF	LGA CLT MSP
23:56	A	American	2039	A320	M	S	PIT CLT MSP
23:57	A	Delta	1537	B739	M	MTWThFSu	PHX MSP
23:57	A	Spirit	424	A320	M	MTWThFSSu	LAX MSP
23:57	A	Sun Country	426	B738	M	M	LAX MSP
23:58	A	Sun Country	616	B738	M	M	PSP MSP
23:59	A	Delta	1461	A321	M	S	ATL MSP
23:59	A	Delta	1461	B753	M	Su	ATL MSP
23:59	A	Spirit	424	A320	M	MTWThFSSu	LAX MSP
23:59	A	United	6202	CRJ	M	MTWThFSu	IAD MSP
00:01	A	American	2039	A320	M	TW	BWI CLT MSP
00:01	A	Delta	1461	A321	M	MTWThFS	ATL MSP
00:03	A	Delta	1461	MD90	M	M	ATL MSP
00:03	A	United	174	A320	M	T	IAH MSP
00:03	A	United	5593	E170	M	TWTh	LAX MSP
00:10	A	United	917	A320	M	F	FLL IAH MSP
00:12	A	American	1180	B738	M	MTWTh	LAX MSP
00:13	A	Sun Country	398	B738	M	M	SFO MSP
00:15	A	United	5315	E170	M	MTWThFS	SFO MSP
00:22	A	United	774	B738	M	MTWThFS	ORD MSP
00:22	A	United	774	B739	M	S	ORD MSP
00:25	A	United	5315	E170	M	Th	SFO MSP
00:35	A	United	5315	E170	M	M	SFO MSP
01:10	A	United	2505	B738	M	F	MKC MSP
03:30	A	UPS	0554	B757	M	TWThF	
04:15	A	UPS	0556	B757	M	TWThF	

May 2017 Nighttime Scheduled Carrier Jet Operations

Time	A/D	Carrier	Flight Number	Equipment	Stage 3	Days of Operation	Routing
04:25	A	Fedex	8364	FA20		TWThF	
04:32	A	UPS	0558	B757	M	TWThF	
04:54	A	UPS	1426	B757	M	S	
04:55	A	American	2522	B738	M	MTF	PHX MSP
05:00	A	Sun Country	110	B738	M	MTThFSSu	LAS MSP
05:00	D	American	2340	B738	M	MTWThFSSu	MSP ORD
05:00	D	United	6186	E170	M	MTW	MSP IAH
05:01	D	United	1465	A320	M	MTWThF	MSP IAH
05:01	D	United	1465	B738	M	S	MSP IAH
05:01	D	United	1465	B739	M	S	MSP IAH
05:04	D	American	1960	A320	M	MTWThF	MSP CLT BWI
05:05	D	American	2046	A320	M	Su	MSP CLT RSW
05:05	D	American	1973	A320	M	S	MSP CLT PLS
05:05	A	Sun Country	476	B738	M	MSSu	ANC MSP
05:09	A	Fedex	1718	MD11	M	TWThF	
05:10	A	Sun Country	290	B738	M	T	SEA MSP
05:10	A	UPS	0560	MD11	M	TWThF	
05:14	A	Fedex	2555	B757	M	WF	
05:19	D	American	1897	A320	M	MTW	MSP CLT EWR
05:20	D	United	848	B739	M	S	MSP ORD
05:20	D	United	848	A319	M	Su	MSP ORD
05:20	D	United	848	B738	M	MTWThFSSu	MSP ORD
05:25	D	Delta	1991	A321	M	MTWThFSSu	MSP ATL
05:25	D	Delta	1991	MD90	M	M	MSP ATL
05:28	A	Sun Country	430	B738	M	M	LAX MSP
05:34	A	Fedex	1407	MD11	M	TWThFS	
05:37	A	Delta	690	B757	M	MSu	FAI MSP
05:39	A	Delta	690	B757	M	MTWThFS	FAI MSP
05:40	D	Southwest	2007	B737	M	MTWThF	MSP ATL
05:44	A	UPS	0496	B757	M	S	
05:45	D	Southwest	1339	B737	M	MTWThF	MSP PHX
05:49	A	Delta	1492	A333	M	MSu	HNL MSP
05:50	A	Delta	1492	A333	M	MTFS	HNL MSP
05:52	A	Delta	1450	B757	M	S	LAS MSP
05:54	A	Delta	1450	A320	M	M	LAS MSP
05:54	A	Delta	1450	B757	M	MFSu	LAS MSP
05:54	A	Delta	1450	B739	M	TWThSu	LAS MSP
05:55	D	United	1864	A319	M	T	MSP DEN
05:55	D	United	1864	B739	M	M	MSP DEN
05:56	A	Delta	2440	B739	M	MWTh	SEA MSP
05:56	A	Delta	2440	B757	M	M	SEA MSP
05:57	A	Delta	1450	MD90	M	M	LAS MSP
05:58	A	Delta	2480	B717	M	S	FSD MSP
05:58	A	Delta	2440	B739	M	S	SEA MSP
05:59	A	Delta	2480	B717	M	MTWThF	FSD MSP

April 2017 Top 15 Actual Nighttime Jet Operators by Type 10:30 p.m. to 6:00 a.m.

Total Nighttime Jet
Operations by Hour

Hour	Count
2230	381
2300	728
2400	239
100	68
200	26
300	30
400	79
500	486
TOTAL	2037

Airline	ID	Stage	Type	Count
Air Alliance/Air Georgian (Canada)	GGN	3	CRJ1	4
Air Alliance/Air Georgian (Canada)	GGN	3	CRJ2	10
Alaska	ASA	3	B738	8
Alaska	ASA	3	B739	11
Alaska	ASA	3	B7377	12
American	AAL	3	MD80	1
American	AAL	3	A319	11
American	AAL	3	A321	32
American	AAL	3	A320	50
American	AAL	3	B738	116
Compass	CPZ	3	E170	38
Delta	DAL	3	B763	2
Delta	DAL	3	B738	26
Delta	DAL	3	A330	28
Delta	DAL	3	A319	29
Delta	DAL	3	B717	36
Delta	DAL	3	MD80	38
Delta	DAL	3	A320	40
Delta	DAL	3	MD90	81
Delta	DAL	3	B739	139
Delta	DAL	3	B757	141
Fedex	FDX	3	A300	1
Fedex	FDX	3	B757	1
Fedex	FDX	3	DC10	2
Fedex	FDX	3	MD11	38
Frontier Airlines	FFT	3	A319	8
Frontier Airlines	FFT	3	A320	10
Mesa Airlines	ASH	3	CRJ7	2
Mesa Airlines	ASH	3	E170	31
Republic Airlines	RPA	3	E170	65
Skywest Airlines	SKW	3	CRJ7	11
Skywest Airlines	SKW	3	CRJ2	41
Skywest Airlines	SKW	3	E170	46
Skywest Airlines	SKW	3	CRJ9	60
Southwest	SWA	3	B733	16
Southwest	SWA	3	B738	73
Southwest	SWA	3	B7377	118
Spirit	NKS	3	A319	25
Spirit	NKS	3	A321	30
Spirit	NKS	3	A320	86
Sun Country	SCX	3	B7377	70
Sun Country	SCX	3	B738	272
United	UAL	3	A319	8
United	UAL	3	B739	11
United	UAL	3	B738	26
United	UAL	3	A320	27

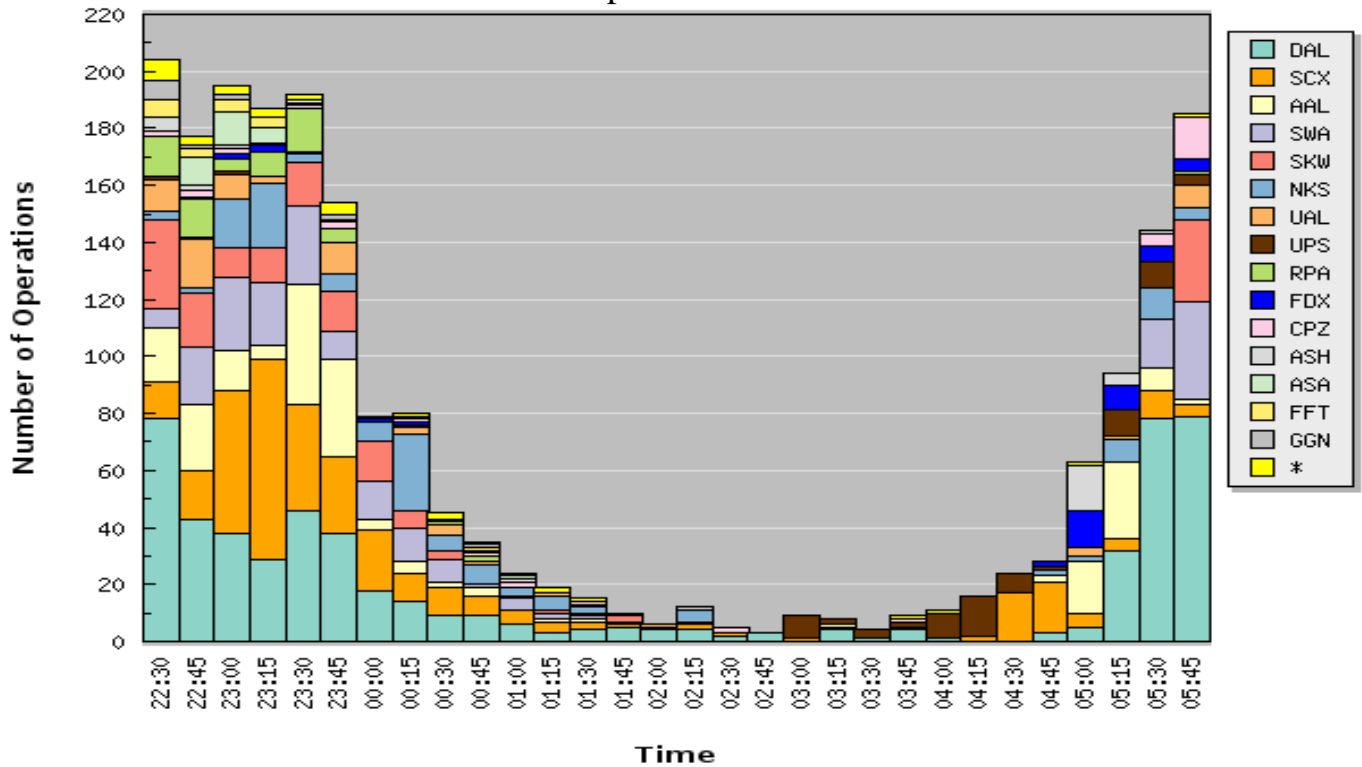
Continued on next page.

April 2017 Top 15 Actual Nighttime Jet Operators by Type
10:30 p.m. to 6:00 a.m.
Continued

Airline	ID	Stage	Type	Count
UPS	UPS	3	MD11	16
UPS	UPS	3	B757	55
TOTAL				2002

Note: The top 15 nighttime operators represent 98.3% of the total nighttime carrier jet operations.

April 2017 Nighttime Carrier Jet Operations Mix for Top 15 Airlines
10:30 p.m. to 6:00 a.m.



April 2017 Nighttime Carrier Jet Fleet Stage Mix for Top 15 Airlines
10:30 p.m. to 6:00 a.m.

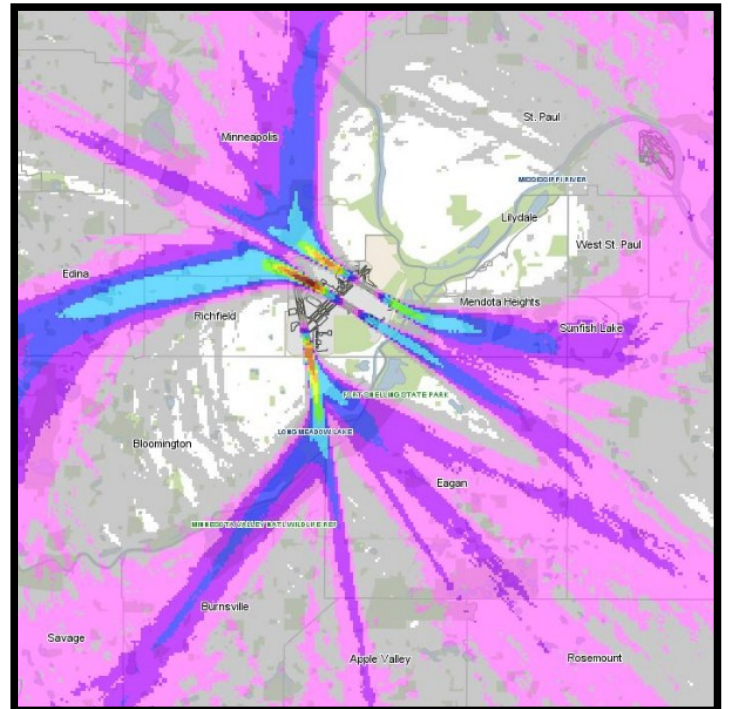
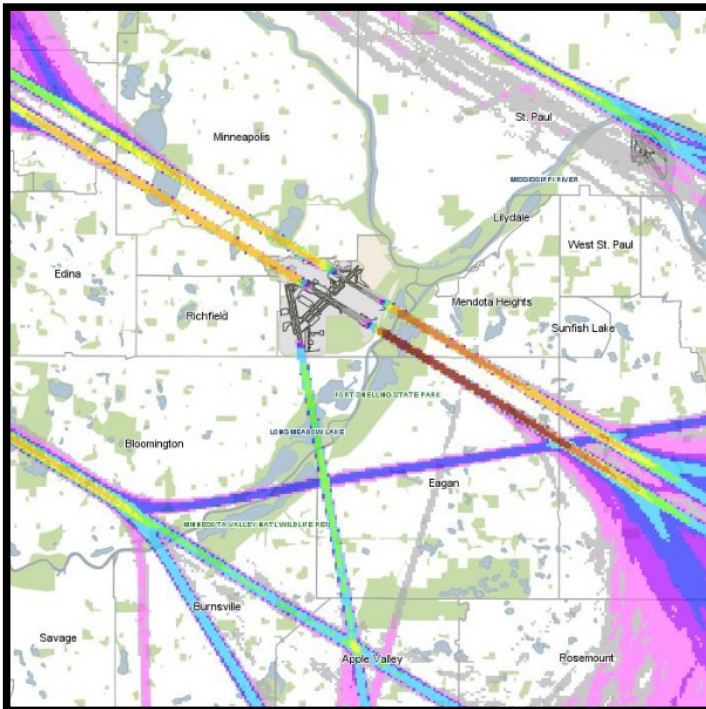
Airline	Stage 2	Stage 3	Manufactured Stage 3	Total
Delta (DAL)	0	0	560	560
Sun Country (SCX)	0	0	342	342
American (AAL)	0	0	210	210
Southwest (SWA)	0	0	207	207
Skywest Airlines (SKW)	0	0	158	158
Spirit (NKS)	0	0	141	141
United (UAL)	0	0	72	72
UPS (UPS)	0	0	71	71
Republic Airlines (RPA)	0	0	65	65
Fedex (FDX)	0	0	42	42
Compass (CPZ)	0	0	38	38
Mesa Airlines (ASH)	0	0	33	33
Alaska (ASA)	0	0	31	31
Frontier Airlines (FFT)	0	0	18	18
Air Alliance/Air Georgian (Canada) (GGN)	0	0	14	14
Other	0	0	35	35
Total	0	0	2037	2037

Airport Noise and Operations Monitoring System Flight Tracks

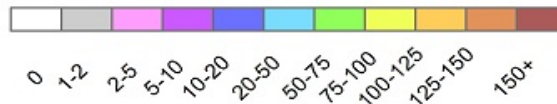
Carrier Jet Operations - April 2017

Apr 1 thru 8, 2017 - 4069 Carrier Jet Arrivals

Apr 1 thru 8, 2017 - 4056 Carrier Jet Departures

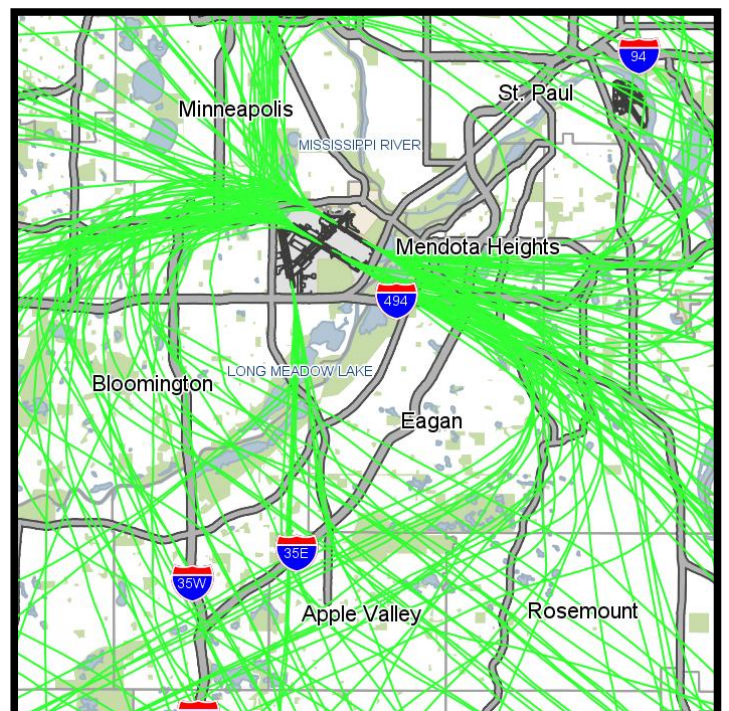
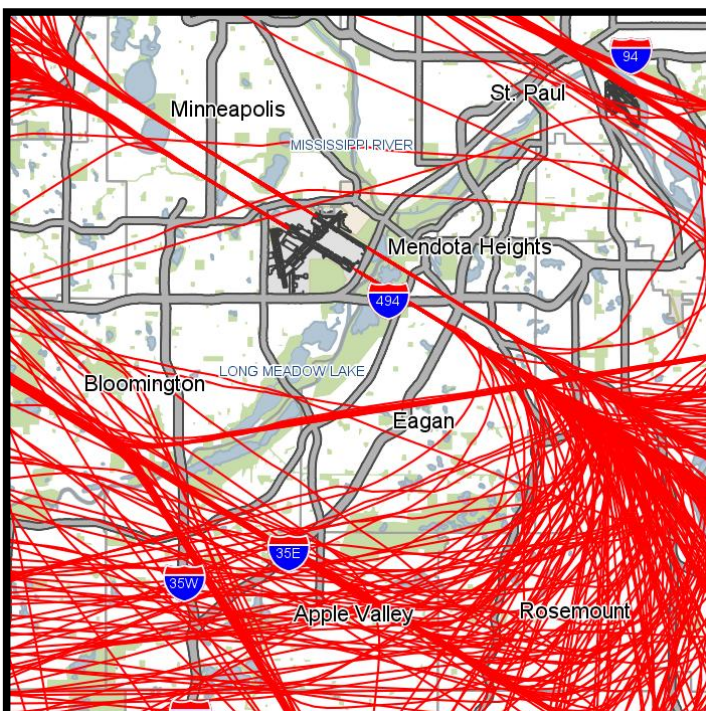


Average Daily Operations



Apr 1 thru 8, 2017 - 451 Nighttime* Carrier Jet Arrivals

Apr 1 thru 8, 2017 - 179 Nighttime* Carrier Jet Departures

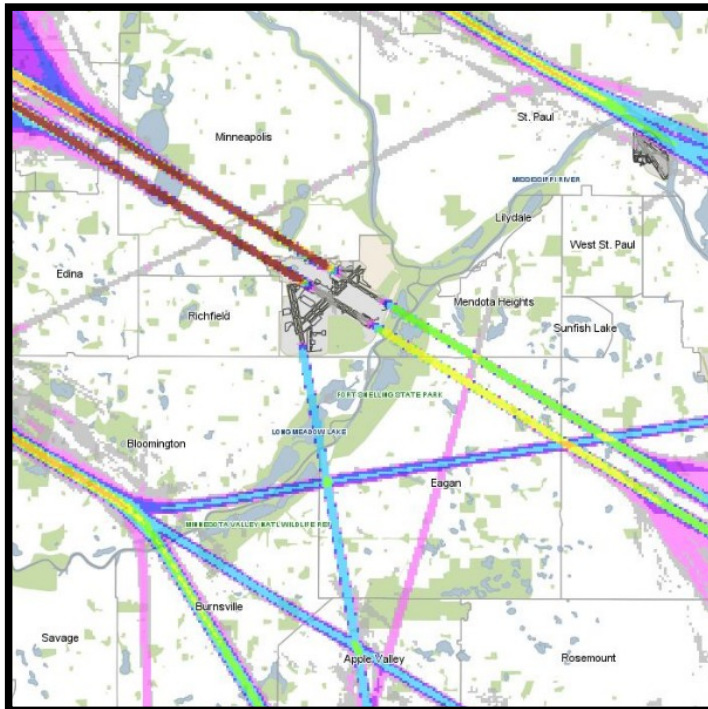


*NOTE: Nighttime is 10:30 p.m. to 6:00 a.m.

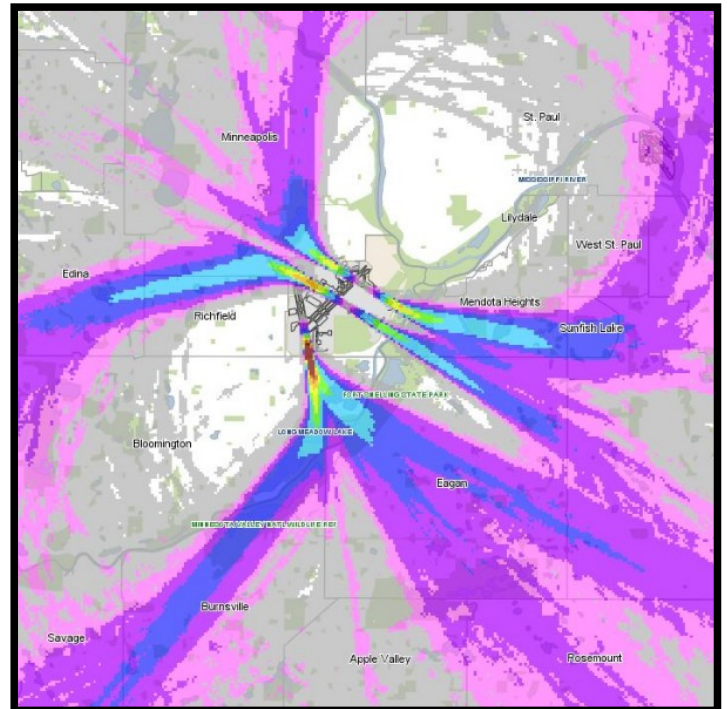
Airport Noise and Operations Monitoring System Flight Tracks

Carrier Jet Operations - April 2017

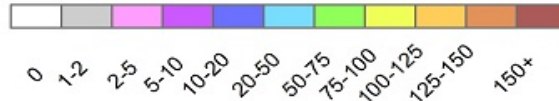
Apr 9 thru 16, 2017 - 4201 Carrier Jet Arrivals



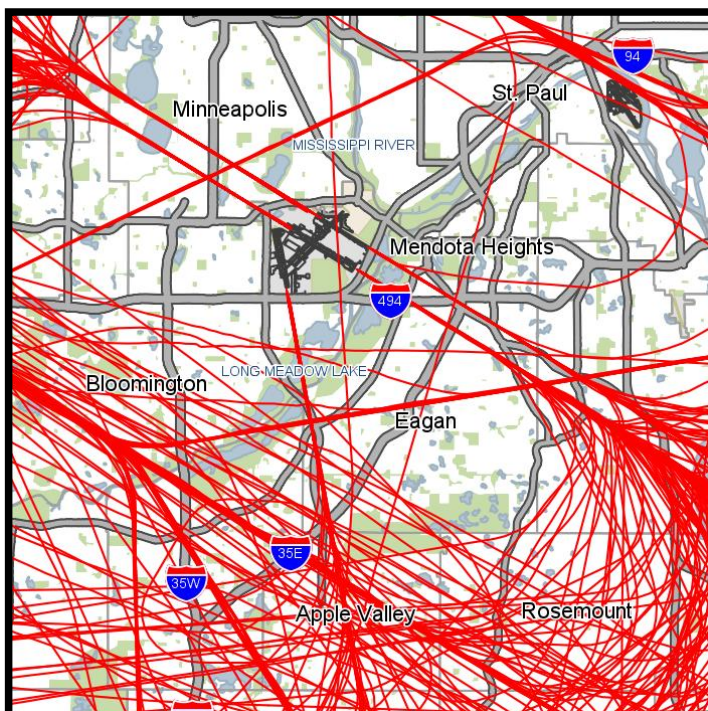
Apr 9 thru 16, 2017 - 4203 Carrier Jet Departures



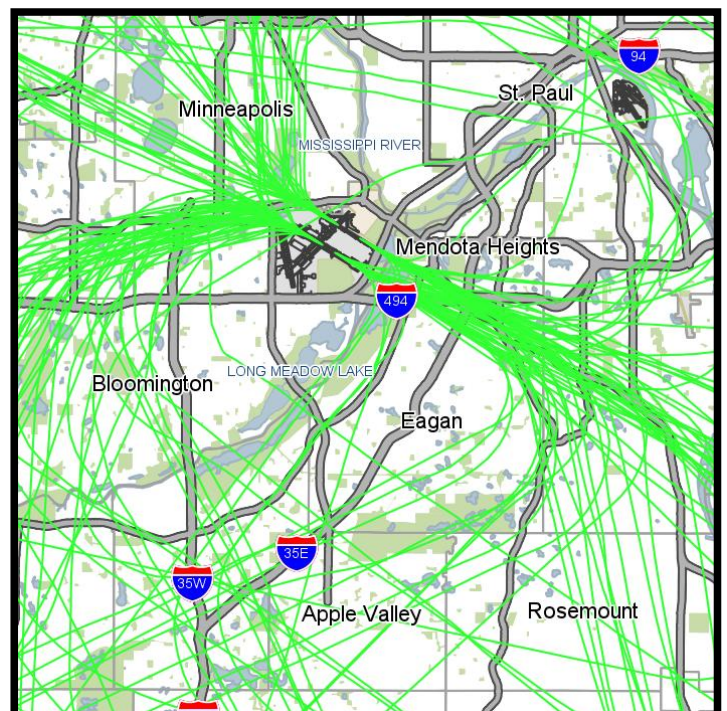
Average Daily Operations



Apr 9 thru 16, 2017 - 406 Nighttime* Carrier Jet Arrivals



Apr 9 thru 16, 2017 - 141 Nighttime* Carrier Jet Departures

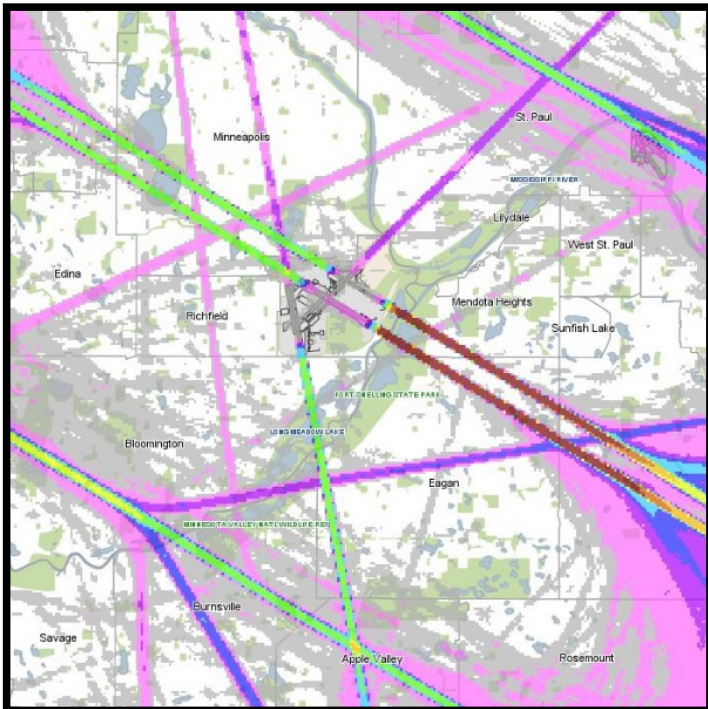


*NOTE: Nighttime is 10:30 p.m. to 6:00 a.m.

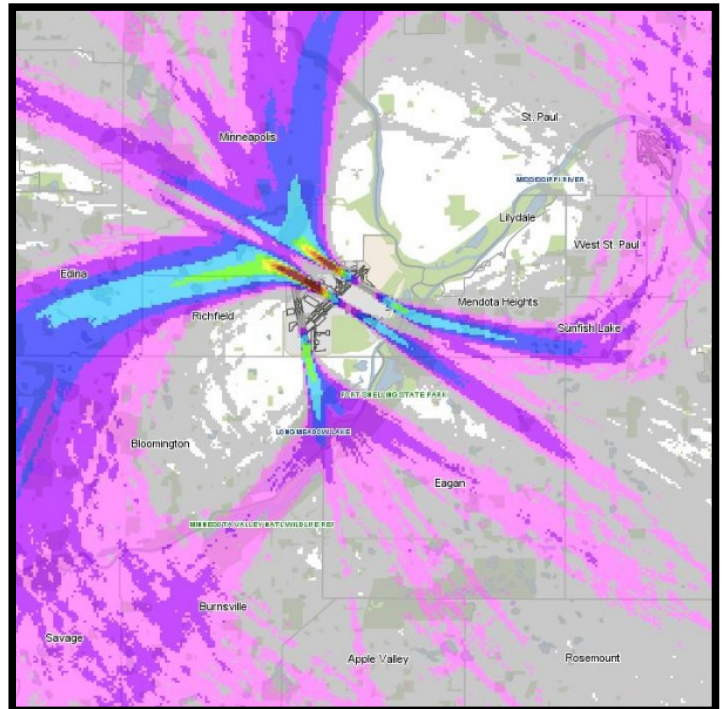
Airport Noise and Operations Monitoring System Flight Tracks

Carrier Jet Operations - April 2017

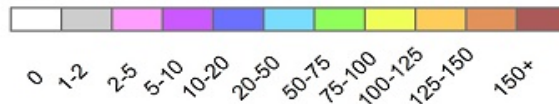
Apr 17 thru 24, 2017 - 4248 Carrier Jet Arrivals



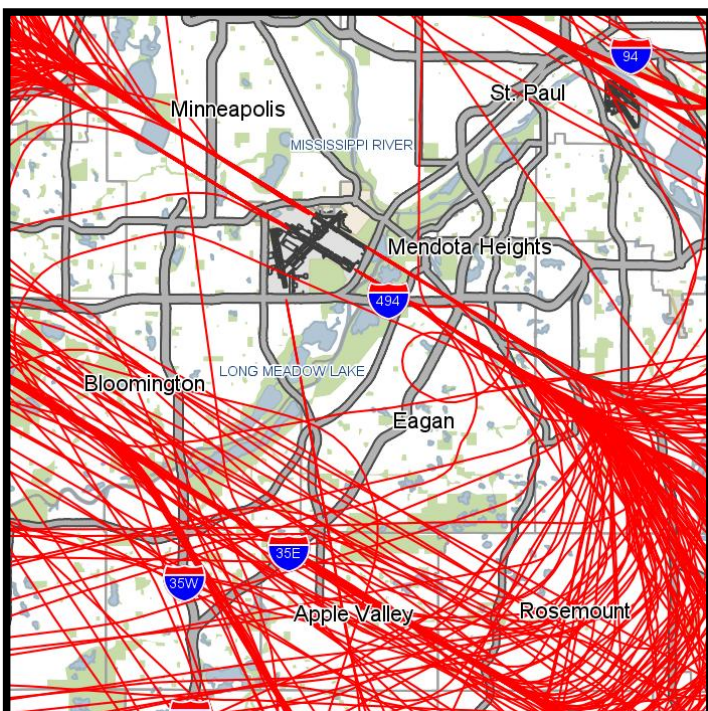
Apr 17 thru 24, 2017 - 4255 Carrier Jet Departures



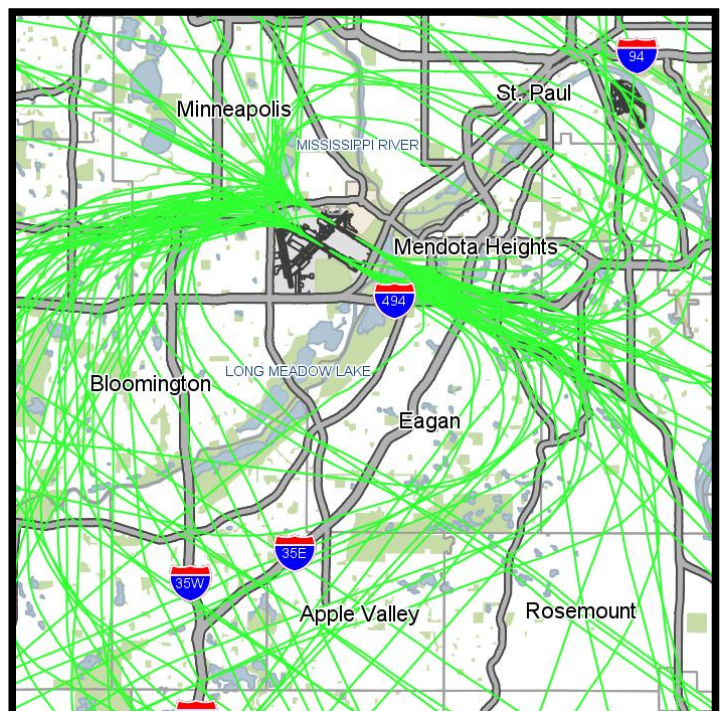
Average Daily Operations



Apr 17 thru 24, 2017 - 397 Nighttime* Carrier Jet Arrivals



Apr 17 thru 24, 2017 - 124 Nighttime* Carrier Jet Departures

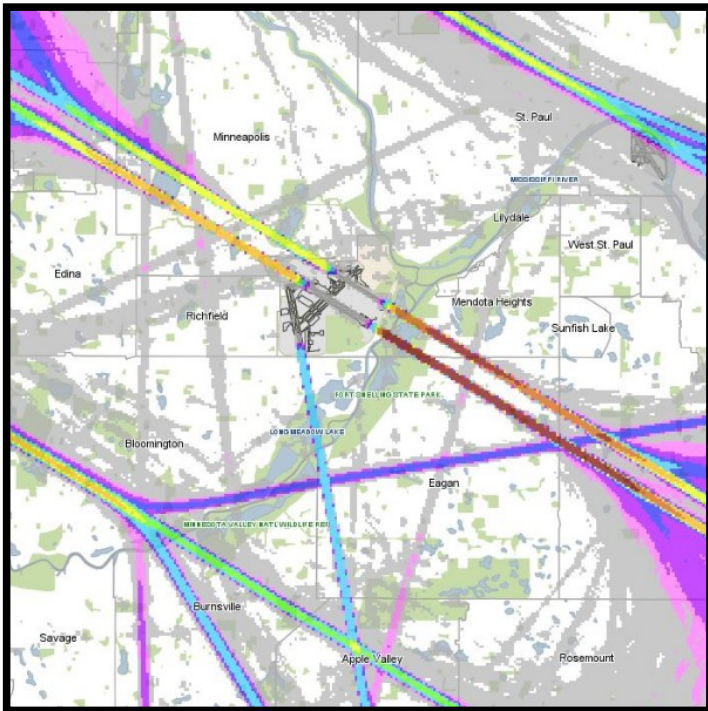


*NOTE: Nighttime is 10:30 p.m. to 6:00 a.m.

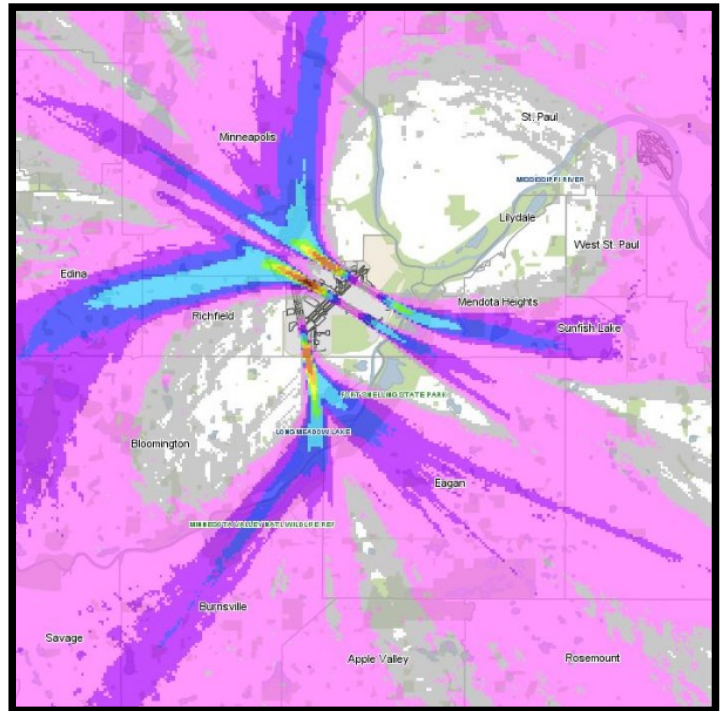
Airport Noise and Operations Monitoring System Flight Tracks

Carrier Jet Operations - April 2017

Apr 25 thru 30, 2017 - 3094 Carrier Jet Arrivals



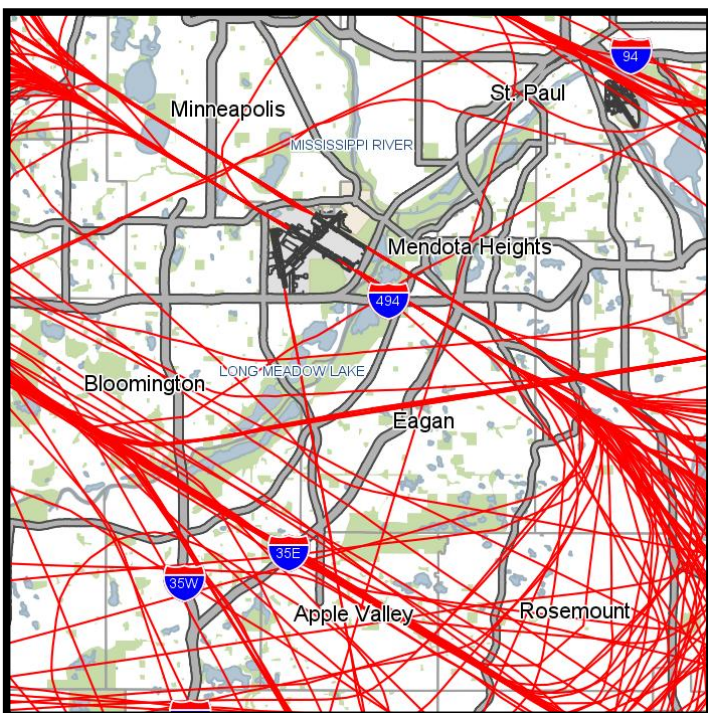
Apr 25 thru 30, 2017 - 3086 Carrier Jet Departures



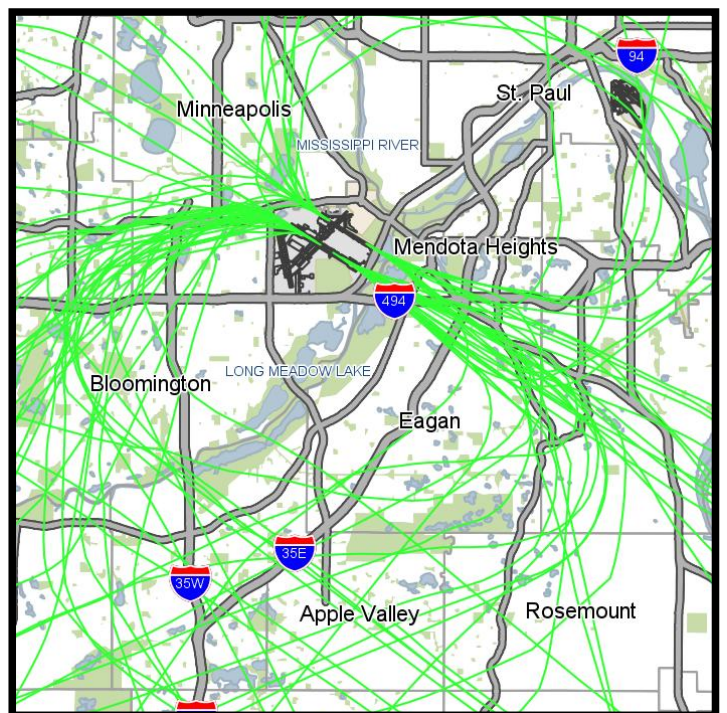
Average Daily Operations



Apr 25 thru 30, 2017 - 258 Nighttime* Carrier Jet Arrivals

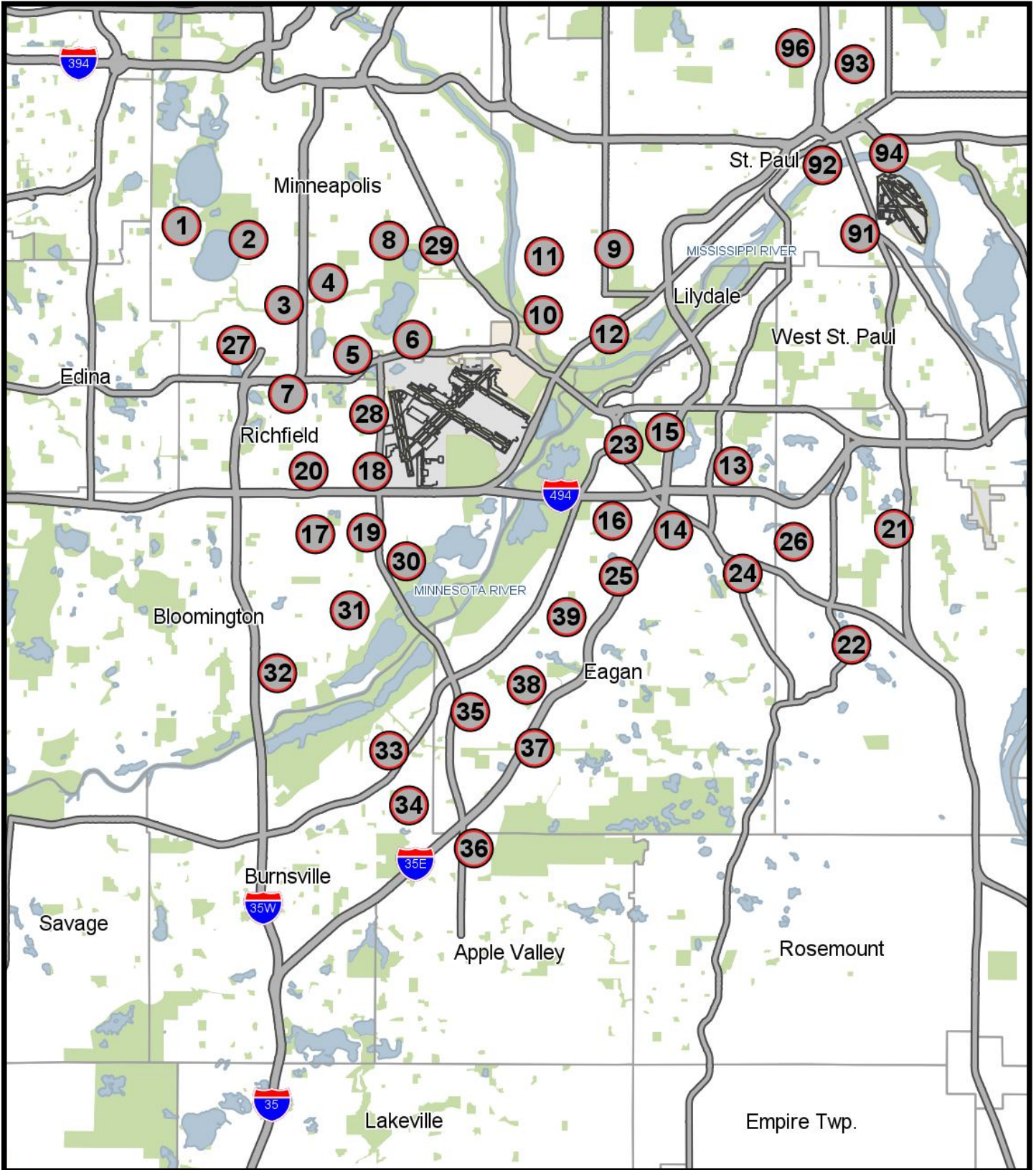


Apr 25 thru 30, 2017 - 81 Nighttime* Carrier Jet Departures



*NOTE: Nighttime is 10:30 p.m. to 6:00 a.m.

MSP International Airport
Remote Monitoring Tower (RMT) Site Locations



● Remote Monitoring Tower

Note: The following pages contain noise data representative of real-time recordings from the Remote Monitoring Towers. Occasional data losses occur as a result of short-term equipment malfunctions and routine maintenance. Remote Monitoring Terminal (RMT) #11 in St. Paul is being relocated and temporarily disassembled due to construction on the property where the RMT was located. As a result, data for RMT 11 are not available beyond July 17, 2016.

Time Above dB Threshold for Arrival Related Noise Events

April 2017

RMT ID	City	Address	Time >= 65dB	Time >= 80dB	Time >= 90dB	Time >= 100dB
1	Minneapolis	Xerxes Ave. & 41st St.	17:47:58	00:01:19	00:00:00	00:00:00
2	Minneapolis	Fremont Ave. & 43rd St.	16:31:17	00:08:08	00:00:05	00:00:00
3	Minneapolis	West Elmwood St. & Belmont Ave.	21:14:25	00:56:35	00:00:49	00:00:00
4	Minneapolis	Park Ave. & 48th St.	15:57:58	00:08:06	00:00:01	00:00:00
5	Minneapolis	12th Ave. & 58th St.	21:00:52	04:44:32	00:01:26	00:00:00
6	Minneapolis	25th Ave. & 57th St.	16:10:45	03:01:13	00:01:03	00:00:00
7	Richfield	Wentworth Ave. & 64th St.	00:17:44	00:00:03	00:00:00	00:00:00
8	Minneapolis	Longfellow Ave. & 43rd St.	00:14:43	00:00:01	00:00:00	00:00:00
9	St. Paul	Saratoga St. & Hartford Ave.	00:13:47	00:03:06	00:00:00	00:00:00
10	St. Paul	Itasca Ave. & Bowdoin St.	00:13:32	00:03:36	00:00:09	00:00:00
11	St. Paul	Finn St. & Scheffer Ave.	00:00:00	00:00:00	00:00:00	00:00:00
12	St. Paul	Alton St. & Rockwood Ave.	00:01:06	00:00:00	00:00:00	00:00:00
13	Mendota Heights	Southeast end of Mohican Court	00:05:50	00:00:00	00:00:00	00:00:00
14	Eagan	1st St. & McKee St.	20:32:13	00:01:07	00:00:06	00:00:00
15	Mendota Heights	Cullon St. & Lexington Ave.	00:08:33	00:00:01	00:00:00	00:00:00
16	Eagan	Avalon Ave. & Vilas Ln.	20:49:41	00:44:58	00:00:46	00:00:00
17	Bloomington	84th St. & 4th Ave.	00:01:11	00:00:00	00:00:00	00:00:00
18	Richfield	75th St. & 17th Ave.	01:09:04	00:00:12	00:00:00	00:00:00
19	Bloomington	16th Ave. & 84th St.	00:05:12	00:00:03	00:00:00	00:00:00
20	Richfield	75th St. & 3rd Ave.	00:01:47	00:00:00	00:00:00	00:00:00
21	Inver Grove Heights	Barbara Ave. & 67th St.	00:03:49	00:00:00	00:00:00	00:00:00
22	Inver Grove Heights	Anne Marie Trail	15:53:02	00:00:02	00:00:00	00:00:00
23	Mendota Heights	End of Kenndon Ave.	00:41:28	00:00:35	00:00:00	00:00:00
24	Eagan	Chapel Ln. & Wren Ln.	21:52:06	00:01:35	00:00:00	00:00:00
25	Eagan	Moonshine Park 1321 Jurdy Rd.	00:24:00	00:00:08	00:00:00	00:00:00
26	Inver Grove Heights	6796 Arkansas Ave. W.	00:27:52	00:00:00	00:00:00	00:00:00
27	Minneapolis	Anthony School 5757 Irving Ave. S.	00:06:49	00:00:05	00:00:00	00:00:00
28	Richfield	6645 16th Ave. S.	02:12:23	00:00:28	00:00:00	00:00:00
29	Minneapolis	Ericsson Elem. School 4315 31st Ave. S.	00:02:39	00:00:00	00:00:00	00:00:00
30	Bloomington	8715 River Ridge Rd.	01:23:18	00:00:41	00:00:00	00:00:00
31	Bloomington	9501 12th Ave. S.	00:01:38	00:00:00	00:00:00	00:00:00
32	Bloomington	10325 Pleasant Ave. S.	00:00:22	00:00:00	00:00:00	00:00:00
33	Burnsville	North River Hills Park	00:00:36	00:00:00	00:00:00	00:00:00
34	Burnsville	Red Oak Park	00:01:45	00:00:00	00:00:00	00:00:00
35	Eagan	2100 Garnet Ln.	02:38:27	00:00:00	00:00:00	00:00:00
36	Apple Valley	Briar Oaks & Scout Pond	05:26:18	00:00:16	00:00:00	00:00:00
37	Eagan	4399 Woodgate Ln. N.	00:02:05	00:00:00	00:00:00	00:00:00
38	Eagan	3957 Turquoise Cir.	00:01:59	00:00:01	00:00:00	00:00:00
39	Eagan	3477 St. Charles Pl.	00:01:50	00:00:05	00:00:00	00:00:00
Total Time for Arrival Noise Events			204:00:04	09:56:56	00:04:25	00:00:00

Remote Monitoring Terminal (RMT) #11 in St. Paul is being relocated and temporarily disassembled due to construction on the property where the RMT was located. As a result, data for RMT 11 are not available beyond July 17, 2016.

*Note: These time values and levels are based upon 1-second leq levels.

Time Above Threshold dB for Departure Related Noise Events

April 2017

RMT ID	City	Address	Time >= 65dB	Time >= 80dB	Time >= 90dB	Time >= 100dB
1	Minneapolis	Xerxes Ave. & 41st St.	03:00:10	00:00:07	00:00:00	00:00:00
2	Minneapolis	Fremont Ave. & 43rd St.	03:47:11	00:00:49	00:00:00	00:00:00
3	Minneapolis	West Elmwood St. & Belmont Ave.	08:47:09	00:08:34	00:00:00	00:00:00
4	Minneapolis	Park Ave. & 48th St.	10:31:59	00:12:27	00:00:00	00:00:00
5	Minneapolis	12th Ave. & 58th St.	35:45:29	03:00:16	00:07:23	00:00:00
6	Minneapolis	25th Ave. & 57th St.	35:45:22	05:00:01	00:17:43	00:00:00
7	Richfield	Wentworth Ave. & 64th St.	24:08:00	00:47:55	00:00:19	00:00:00
8	Minneapolis	Longfellow Ave. & 43rd St.	10:23:38	00:27:46	00:00:23	00:00:00
9	St. Paul	Saratoga St. & Hartford Ave.	00:01:24	00:00:00	00:00:00	00:00:00
10	St. Paul	Itasca Ave. & Bowdoin St.	00:02:59	00:00:01	00:00:00	00:00:00
11	St. Paul	Finn St. & Scheffer Ave.	00:00:00	00:00:00	00:00:00	00:00:00
12	St. Paul	Alton St. & Rockwood Ave.	00:01:05	00:00:00	00:00:00	00:00:00
13	Mendota Heights	Southeast end of Mohican Court	07:26:32	00:03:53	00:00:00	00:00:00
14	Eagan	1st St. & McKee St.	09:19:16	00:09:41	00:00:00	00:00:00
15	Mendota Heights	Cullon St. & Lexington Ave.	08:42:04	00:09:02	00:00:00	00:00:00
16	Eagan	Avalon Ave. & Vilas Ln.	10:08:02	00:35:29	00:00:24	00:00:00
17	Bloomington	84th St. & 4th Ave.	00:06:26	00:00:00	00:00:00	00:00:00
18	Richfield	75th St. & 17th Ave.	11:20:39	00:03:04	00:00:00	00:00:00
19	Bloomington	16th Ave. & 84th St.	05:45:38	00:00:36	00:00:00	00:00:00
20	Richfield	75th St. & 3rd Ave.	00:18:08	00:00:05	00:00:00	00:00:00
21	Inver Grove Heights	Barbara Ave. & 67th St.	01:33:01	00:00:15	00:00:00	00:00:00
22	Inver Grove Heights	Anne Marie Trail	01:18:55	00:00:07	00:00:00	00:00:00
23	Mendota Heights	End of Kenndon Ave.	15:58:56	00:52:54	00:00:52	00:00:00
24	Eagan	Chapel Ln. & Wren Ln.	05:42:08	00:02:07	00:00:00	00:00:00
25	Eagan	Moonshine Park 1321 Jurdy Rd.	09:33:52	00:00:43	00:00:00	00:00:00
26	Inver Grove Heights	6796 Arkansas Ave. W.	02:56:46	00:01:08	00:00:00	00:00:00
27	Minneapolis	Anthony School 5757 Irving Ave. S.	12:24:51	00:19:40	00:00:01	00:00:00
28	Richfield	6645 16th Ave. S.	18:59:18	00:07:32	00:00:00	00:00:00
29	Minneapolis	Ericsson Elem. School 4315 31st Ave. S.	05:37:26	00:03:54	00:00:00	00:00:00
30	Bloomington	8715 River Ridge Rd.	21:55:27	00:55:30	00:00:19	00:00:00
31	Bloomington	9501 12th Ave. S.	02:18:24	00:00:17	00:00:00	00:00:00
32	Bloomington	10325 Pleasant Ave. S.	00:35:37	00:00:00	00:00:00	00:00:00
33	Burnsville	North River Hills Park	01:55:48	00:00:32	00:00:00	00:00:00
34	Burnsville	Red Oak Park	00:51:09	00:00:26	00:00:00	00:00:00
35	Eagan	2100 Garnet Ln.	02:57:23	00:02:13	00:00:00	00:00:00
36	Apple Valley	Briar Oaks & Scout Pond	00:45:11	00:00:14	00:00:00	00:00:00
37	Eagan	4399 Woodgate Ln. N.	02:55:14	00:02:32	00:00:00	00:00:00
38	Eagan	3957 Turquoise Cir.	05:03:54	00:07:24	00:00:00	00:00:00
39	Eagan	3477 St. Charles Pl.	05:49:54	00:08:29	00:00:00	00:00:00
Total Time for Departure Noise Events			304:34:25	13:25:43	00:27:24	00:00:00

Remote Monitoring Terminal (RMT) #11 in St. Paul is being relocated and temporarily disassembled due to construction on the property where the RMT was located. As a result, data for RMT 11 are not available beyond July 17, 2016.

*Note: These time values and levels are based upon 1-second leq levels.

Arrival Related Noise Events

April 2017

RMT ID	City	Address	Arrival Events >= 65dB	Arrival Events >= 80dB	Arrival Events >= 90dB	Arrival Events >= 100dB
1	Minneapolis	Xerxes Ave. & 41st St.	4013	19	0	0
2	Minneapolis	Fremont Ave. & 43rd St.	3411	144	1	0
3	Minneapolis	West Elmwood St. & Belmont Ave.	4117	865	11	0
4	Minneapolis	Park Ave. & 48th St.	3419	144	1	0
5	Minneapolis	12th Ave. & 58th St.	4231	3563	36	0
6	Minneapolis	25th Ave. & 57th St.	3572	3075	35	0
7	Richfield	Wentworth Ave. & 64th St.	79	3	0	0
8	Minneapolis	Longfellow Ave. & 43rd St.	47	2	0	0
9	St. Paul	Saratoga St. & Hartford Ave.	40	27	0	0
10	St. Paul	Itasca Ave. & Bowdoin St.	42	36	3	0
11	St. Paul	Finn St. & Scheffer Ave.	0	0	0	0
12	St. Paul	Alton St. & Rockwood Ave.	4	0	0	0
13	Mendota Heights	Southeast end of Mohican Court	20	0	0	0
14	Eagan	1st St. & McKee St.	4561	11	2	0
15	Mendota Heights	Cullon St. & Lexington Ave.	26	1	0	0
16	Eagan	Avalon Ave. & Vilas Ln.	4451	753	9	0
17	Bloomington	84th St. & 4th Ave.	4	0	0	0
18	Richfield	75th St. & 17th Ave.	248	3	0	0
19	Bloomington	16th Ave. & 84th St.	21	1	0	0
20	Richfield	75th St. & 3rd Ave.	5	0	0	0
21	Inver Grove Heights	Barbara Ave. & 67th St.	14	0	0	0
22	Inver Grove Heights	Anne Marie Trail	3594	3	0	0
23	Mendota Heights	End of Kenndon Ave.	153	9	0	0
24	Eagan	Chapel Ln. & Wren Ln.	4801	23	0	0
25	Eagan	Moonshine Park 1321 Jurdy Rd.	93	2	0	0
26	Inver Grove Heights	6796 Arkansas Ave. W.	119	0	0	0
27	Minneapolis	Anthony School 5757 Irving Ave. S.	23	2	0	0
28	Richfield	6645 16th Ave. S.	457	9	0	0
29	Minneapolis	Ericsson Elem. School 4315 31st Ave. S.	9	0	0	0
30	Bloomington	8715 River Ridge Rd.	363	6	0	0
31	Bloomington	9501 12th Ave. S.	6	0	0	0
32	Bloomington	10325 Pleasant Ave. S.	2	0	0	0
33	Burnsville	North River Hills Park	3	0	0	0
34	Burnsville	Red Oak Park	7	0	0	0
35	Eagan	2100 Garnet Ln.	610	1	0	0
36	Apple Valley	Briar Oaks & Scout Pond	1138	3	0	0
37	Eagan	4399 Woodgate Ln. N.	7	0	0	0
38	Eagan	3957 Turquoise Cir.	6	1	0	0
39	Eagan	3477 St. Charles Pl.	5	1	0	0
Total Arrival Noise Events			43721	8707	98	0

Remote Monitoring Terminal (RMT) #11 in St. Paul is being relocated and temporarily disassembled due to construction on the property where the RMT was located. As a result, data for RMT 11 are not available beyond July 17, 2016.

*Note: These counts are based upon Lmax.

Departure Related Noise Events

April 2017

RMT ID	City	Address	Departure Events >= 65dB	Departure Events >= 80dB	Departure Events >= 90dB	Departure Events >= 100dB
1	Minneapolis	Xerxes Ave. & 41st St.	615	3	0	0
2	Minneapolis	Fremont Ave. & 43rd St.	766	17	0	0
3	Minneapolis	West Elmwood St. & Belmont Ave.	1603	125	0	0
4	Minneapolis	Park Ave. & 48th St.	1864	212	0	0
5	Minneapolis	12th Ave. & 58th St.	5412	1676	138	0
6	Minneapolis	25th Ave. & 57th St.	6007	2394	219	0
7	Richfield	Wentworth Ave. & 64th St.	3769	501	10	0
8	Minneapolis	Longfellow Ave. & 43rd St.	1772	186	7	0
9	St. Paul	Saratoga St. & Hartford Ave.	6	0	0	0
10	St. Paul	Itasca Ave. & Bowdoin St.	8	1	0	0
11	St. Paul	Finn St. & Scheffer Ave.	0	0	0	0
12	St. Paul	Alton St. & Rockwood Ave.	4	0	0	0
13	Mendota Heights	Southeast end of Mohican Court	1381	44	0	0
14	Eagan	1st St. & McKee St.	1542	109	0	0
15	Mendota Heights	Cullon St. & Lexington Ave.	1512	116	0	0
16	Eagan	Avalon Ave. & Vilas Ln.	1578	365	13	0
17	Bloomington	84th St. & 4th Ave.	24	0	0	0
18	Richfield	75th St. & 17th Ave.	2308	78	0	0
19	Bloomington	16th Ave. & 84th St.	1146	20	0	0
20	Richfield	75th St. & 3rd Ave.	69	2	0	0
21	Inver Grove Heights	Barbara Ave. & 67th St.	327	5	0	0
22	Inver Grove Heights	Anne Marie Trail	292	4	0	0
23	Mendota Heights	End of Kenndon Ave.	2540	565	19	0
24	Eagan	Chapel Ln. & Wren Ln.	1041	30	0	0
25	Eagan	Moonshine Park 1321 Jurdy Rd.	1222	16	0	0
26	Inver Grove Heights	6796 Arkansas Ave. W.	599	17	0	0
27	Minneapolis	Anthony School 5757 Irving Ave. S.	2336	214	1	0
28	Richfield	6645 16th Ave. S.	3299	161	0	0
29	Minneapolis	Ericsson Elem. School 4315 31st Ave. S.	972	47	0	0
30	Bloomington	8715 River Ridge Rd.	3404	560	9	0
31	Bloomington	9501 12th Ave. S.	450	5	0	0
32	Bloomington	10325 Pleasant Ave. S.	129	0	0	0
33	Burnsville	North River Hills Park	381	8	0	0
34	Burnsville	Red Oak Park	170	7	0	0
35	Eagan	2100 Garnet Ln.	566	28	0	0
36	Apple Valley	Briar Oaks & Scout Pond	165	3	0	0
37	Eagan	4399 Woodgate Ln. N.	502	34	0	0
38	Eagan	3957 Turquoise Cir.	893	78	0	0
39	Eagan	3477 St. Charles Pl.	1083	81	0	0
Total Departure Noise Events			51757	7712	416	0

Remote Monitoring Terminal (RMT) #11 in St. Paul is being relocated and temporarily disassembled due to construction on the property where the RMT was located. As a result, data for RMT 11 are not available beyond July 17, 2016.

*Note: These counts are based upon Lmax.

Top Ten Loudest Aircraft Noise Events for MSP

April 2017

(RMT Site#1)

Xerxes Ave. & 41st St., Minneapolis

Date/Time	Flight Number	Aircraft Type	Arrival/ Departure	Runway	Lmax(dB)
04/08/2017 15:44	DAL1678	B757	A	12R	89.4
04/19/2017 21:09	DAL1487	B757	A	12R	88.4
04/30/2017 18:40	DAL1381	MD80	A	12R	85.4
04/07/2017 20:19	DAL954	B757	A	12R	85.2
04/03/2017 22:07	DAL2796	MD80	A	12R	83.4
04/07/2017 13:30	AAL1409	MD80	A	12R	83.2
04/09/2017 15:45	DAL1910	B757	A	12R	83.1
04/10/2017 7:24	DAL1613	B757	D	30L	82.6
04/19/2017 17:13	DAL1272	MD80	A	12L	81.9
04/02/2017 15:32	SWA4378	B738	A	12R	81.7

(RMT Site#2)

Fremont Ave. & 43rd St., Minneapolis

Date/Time	Flight Number	Aircraft Type	Arrival/ Departure	Runway	Lmax(dB)
04/19/2017 18:11	DAL2536	B757	A	12L	93.2
04/30/2017 8:00	DAL662	MD80	A	12L	87.3
04/12/2017 19:20	DAL988	MD80	A	12L	86.8
04/24/2017 8:05	DAL2469	MD80	A	12L	86.6
04/19/2017 22:27	DAL1055	MD80	A	12L	86.5
04/14/2017 19:20	DAL1381	MD80	A	12L	86.2
04/29/2017 13:29	DAL821	MD80	A	12L	86.1
04/14/2017 0:22	FDX715	MD11	A	12L	85.9
04/03/2017 12:31	DAL517	MD80	A	12L	85.6
04/08/2017 11:17	AAL2455	MD80	A	12L	85

(RMT Site#3)

West Elmwood St. & Belmont Ave., Minneapolis

Date/Time	Flight Number	Aircraft Type	Arrival/ Departure	Runway	Lmax(dB)
04/08/2017 15:45	DAL1678	B757	A	12R	99.5
04/19/2017 21:10	DAL1487	B757	A	12R	97.8
04/03/2017 11:33	DAL2116	B757	A	12R	96.5
04/09/2017 15:46	DAL1910	B757	A	12R	95.4
04/07/2017 8:56	DAL1866	B757	A	12R	95.2
04/07/2017 20:19	DAL954	B757	A	12R	94.8
04/01/2017 0:05	DAL1130	B757	A	12R	93.5
04/24/2017 13:29	AAL1409	MD80	A	12R	93.1
04/24/2017 15:32	DAL888	B757	A	12R	91.5
04/22/2017 8:53	DAL1866	B757	A	12R	91.4

Top Ten Loudest Aircraft Noise Events for MSP

April 2017

(RMT Site#4)

Park Ave. & 48th St., Minneapolis

Date/Time	Flight Number	Aircraft Type	Arrival/ Departure	Runway	Lmax(dB)
04/19/2017 18:12	DAL2536	B757	A	12L	90
04/20/2017 22:14	DAL1556	MD80	D	30R	89.1
04/24/2017 12:33	DAL853	MD80	A	12L	88.5
04/28/2017 13:18	DAL86	MD80	D	30R	88.4
04/28/2017 15:02	DAL883	MD80	D	30R	88.2
04/06/2017 21:48	DAL1556	MD80	D	30R	87.6
04/22/2017 12:10	Unknown	UKN	D	30L	87.4
04/16/2017 20:33	DAL1318	MD80	D	30R	87.4
04/18/2017 11:24	AAL2455	MD80	A	12L	86.8
04/06/2017 20:25	DAL1318	MD80	D	30R	86.7

(RMT Site#5)

12th Ave. & 58th St., Minneapolis

Date/Time	Flight Number	Aircraft Type	Arrival/ Departure	Runway	Lmax(dB)
04/10/2017 10:54	DAL2318	MD80	D	30L	94.9
04/10/2017 9:32	AAL1405	MD80	D	30L	94.3
04/06/2017 20:09	AAL2201	MD80	D	30L	94.3
04/04/2017 7:50	DAL1122	MD80	D	30L	94.2
04/10/2017 9:11	DAL1815	MD80	D	30L	94.1
04/23/2017 9:04	DAL1815	MD80	D	30L	94.1
04/19/2017 7:52	DAL1122	MD80	D	30L	94
04/10/2017 7:56	DAL1122	MD80	D	30L	94
04/25/2017 9:01	DAL1815	MD80	D	30L	94
04/21/2017 9:04	DAL1815	MD80	D	30L	94

(RMT Site#6)

25th Ave. & 57th St., Minneapolis

Date/Time	Flight Number	Aircraft Type	Arrival/ Departure	Runway	Lmax(dB)
04/28/2017 14:29	DAL1272	MD80	D	30R	99.7
04/21/2017 15:01	DAL883	MD80	D	30R	99.1
04/26/2017 8:00	DAL1122	MD80	D	30R	99
04/22/2017 11:46	DAL1629	MD80	D	30R	98.9
04/21/2017 20:28	DAL2644	MD80	D	30R	98.8
04/21/2017 9:09	DAL1579	MD80	D	30R	98.8
04/11/2017 10:53	DAL2318	MD80	D	30R	98.5
04/19/2017 18:12	DAL2536	B757	A	12L	98.4
04/15/2017 17:01	DAL883	MD80	D	30R	98.3
04/25/2017 9:14	DAL1579	MD80	D	30R	98.1

Top Ten Loudest Aircraft Noise Events for MSP

April 2017

(RMT Site#7)

Wentworth Ave. & 64th St., Richfield

Date/Time	Flight Number	Aircraft Type	Arrival/ Departure	Runway	Lmax(dB)
04/10/2017 15:28	DAL1381	MD80	D	30L	93
04/26/2017 20:04	AAL2201	MD80	D	30L	91.6
04/26/2017 11:56	DAL1915	MD80	D	30L	91.4
04/05/2017 10:12	DAL821	MD80	D	30L	91.2
04/20/2017 7:59	DAL1122	MD80	D	30L	91.1
04/10/2017 9:04	DAL853	MD80	D	30L	91
04/27/2017 20:31	DAL2644	MD80	D	30L	90.9
04/05/2017 15:37	DAL1381	MD80	D	30L	90.7
04/20/2017 9:00	DAL1815	MD80	D	30L	90.3
04/27/2017 12:52	AAL2455	MD80	D	30L	90.1

(RMT Site#8)

Longfellow Ave. & 43rd St., Minneapolis

Date/Time	Flight Number	Aircraft Type	Arrival/ Departure	Runway	Lmax(dB)
04/27/2017 18:05	DAL1357	MD80	D	30R	93.8
04/19/2017 7:19	DAL384	MD80	D	30R	93.4
04/26/2017 15:55	DAL883	MD80	D	30R	91.8
04/21/2017 20:18	DAL1556	MD80	D	30R	91.3
04/17/2017 9:18	DAL517	MD80	D	30R	91.2
04/28/2017 21:04	DAL1556	MD80	D	30R	90.5
04/10/2017 15:22	DAL883	MD80	D	30R	90
04/25/2017 13:16	DAL86	MD80	D	30R	89.7
04/21/2017 9:09	DAL1579	MD80	D	30R	89.7
04/01/2017 9:05	DAL1579	MD80	D	30R	89.7

(RMT Site#9)

Saratoga St. & Hartford Ave., St. Paul

Date/Time	Flight Number	Aircraft Type	Arrival/ Departure	Runway	Lmax(dB)
04/18/2017 12:43	DAL987	MD80	A	22	87.7
04/18/2017 13:13	Unknown	UKN	A	22	87.4
04/18/2017 13:09	DAL161	A330	A	22	87.3
04/18/2017 12:46	DAL853	MD80	A	22	87.1
04/18/2017 12:03	DAL517	MD80	A	22	86.8
04/18/2017 13:18	DAL141	B777	A	22	86.5
04/18/2017 13:42	DAL141	B777	A	22	85.6
04/18/2017 12:33	EDV3777	CRJ9	A	22	84.6
04/18/2017 12:09	DAL2090	B739	A	22	84.4
04/18/2017 13:23	EDV4169	CRJ9	A	22	84.2

Top Ten Loudest Aircraft Noise Events for MSP

April 2017

(RMT Site#10)

Itasca Ave. & Bowdoin St., St. Paul

Date/Time	Flight Number	Aircraft Type	Arrival/ Departure	Runway	Lmax(dB)
04/18/2017 12:44	DAL987	MD80	A	22	95.9
04/18/2017 12:04	DAL517	MD80	A	22	91.8
04/18/2017 13:13	Unknown	UKN	A	22	91.4
04/18/2017 13:42	DAL141	B777	A	22	89.4
04/18/2017 13:09	DAL161	A330	A	22	88.9
04/18/2017 12:46	DAL853	MD80	A	22	88.8
04/18/2017 12:09	DAL2090	B739	A	22	88.4
04/18/2017 11:35	DAL1847	B738	A	22	87.9
04/18/2017 13:18	DAL141	B777	A	22	87.8
04/18/2017 12:22	DAL860	A319	A	22	87.2

(RMT Site#11)

Finn St. & Scheffer Ave., St. Paul

Date/Time	Flight Number	Aircraft Type	Arrival/ Departure	Runway	Lmax(dB)
-----------	---------------	---------------	-----------------------	--------	----------

(RMT Site#12)

Alton St. & Rockwood Ave., St. Paul

Date/Time	Flight Number	Aircraft Type	Arrival/ Departure	Runway	Lmax(dB)
04/30/2017 18:33	DAL394	B739	A	12L	79.5
04/30/2017 8:22	LXJ548	CL30	D	12R	76.1
04/23/2017 18:52	N1894S	TB20	D	12L	72.7
04/08/2017 7:37	BMJ66	BE80	D	12L	72.6
04/05/2017 20:21	NKS342	A320	A	30R	72.3
04/14/2017 6:57	BMJ48	BE65	D	12L	70.5
04/19/2017 15:48	SKW4643	CRJ2	A	12L	69.7
04/20/2017 5:20	NKS612	A319	A	30L	69.2

Remote Monitoring Terminal (RMT) #11 in St. Paul is being relocated and temporarily disassembled due to construction on the property where the RMT was located. As a result, data for RMT 11 are not available beyond July 17, 2016.

Top Ten Loudest Aircraft Noise Events for MSP

April 2017

(RMT Site#13)

Southeast end of Mohican Court, Mendota Heights

Date/Time	Flight Number	Aircraft Type	Arrival/ Departure	Runway	Lmax(dB)
04/12/2017 20:27	DAL1318	MD80	D	12L	85.3
04/19/2017 9:11	DAL1579	MD80	D	12L	84.3
04/13/2017 20:44	DAL1556	MD80	D	12L	84.1
04/30/2017 14:22	DAL1272	MD80	D	12L	84
04/19/2017 18:37	DAL86A	MD80	D	12L	83.9
04/30/2017 20:27	DAL1632	MD80	D	12L	83.7
04/08/2017 10:14	DAL971	MD80	D	12L	83.6
04/30/2017 18:09	DAL1357	MD80	D	12L	83.5
04/13/2017 20:39	DAL1318	MD80	D	12L	83.4
04/14/2017 18:04	DAL1357	MD80	D	12L	83

(RMT Site#14)

1st St. & McKee St., Eagan

Date/Time	Flight Number	Aircraft Type	Arrival/ Departure	Runway	Lmax(dB)
04/26/2017 8:05	DAL1650	B757	A	30R	91.7
04/20/2017 16:16	UPS2560	MD11	A	30L	90.3
04/30/2017 10:53	DAL2318	MD80	D	12R	89.2
04/03/2017 14:01	DAL505	MD80	D	12L	89.1
04/02/2017 21:51	DAL1415	MD80	D	12R	88.7
04/19/2017 15:30	DAL988	MD80	D	12L	88.4
04/03/2017 14:28	DAL1272	MD80	D	12L	88
04/19/2017 21:16	DAL859	MD80	D	12R	87.4
04/17/2017 22:18	DAL2896	MD80	D	12R	86.2
04/08/2017 23:06	DAL1624	MD80	D	12L	85.9

(RMT Site#15)

Cullon St. & Lexington Ave., Mendota Heights

Date/Time	Flight Number	Aircraft Type	Arrival/ Departure	Runway	Lmax(dB)
04/07/2017 22:22	DAL1357	MD80	D	12L	88.9
04/29/2017 20:29	DAL1318	MD80	D	12L	88.4
04/03/2017 20:42	DAL1318	MD80	D	12L	88
04/14/2017 20:24	DAL2644	MD80	D	12L	87.8
04/30/2017 14:22	DAL1272	MD80	D	12L	87.5
04/14/2017 20:29	DAL1318	MD80	D	12L	87.3
04/19/2017 9:11	DAL1579	MD80	D	12L	86.3
04/14/2017 20:14	DAL958	MD80	D	12L	86.1
04/14/2017 18:04	DAL1357	MD80	D	12L	86
04/24/2017 20:56	DAL1318	MD80	D	12L	85.7

Top Ten Loudest Aircraft Noise Events for MSP

April 2017

(RMT Site#16)

Avalon Ave. & Vilas Ln., Eagan

Date/Time	Flight Number	Aircraft Type	Arrival/ Departure	Runway	Lmax(dB)
04/26/2017 17:56	DAL954	B757	A	30L	98.6
04/16/2017 22:40	DAL2475	B757	A	30L	96.2
04/26/2017 17:43	DAL954	B757	A	30L	96.2
04/18/2017 14:32	DAL1678	B757	A	30L	95.2
04/04/2017 16:33	DAL1574	B757	A	30L	94.9
04/20/2017 7:24	DAL755	B757	A	30L	93.3
04/03/2017 15:27	DAL1381	MD80	D	12R	92.6
04/21/2017 7:34	DAL755	B757	A	30L	91.6
04/03/2017 12:57	DAL1915	MD80	D	12R	91.4
04/30/2017 20:42	DAL958	MD80	D	12R	91.4

(RMT Site#17)

84th St. & 4th Ave., Bloomington

Date/Time	Flight Number	Aircraft Type	Arrival/ Departure	Runway	Lmax(dB)
04/01/2017 9:51	DAL720	A320	D	30L	78.9
04/18/2017 21:36	FDX1358	MD11	D	30L	75
04/08/2017 7:37	BMJ64	BE65	D	17	74.3
04/25/2017 15:59	SCX387	B738	D	30L	73.8
04/22/2017 13:19	DAL1553	B738	D	30L	72.9
04/10/2017 18:14	DAL1103	B739	A	30L	72.9
04/18/2017 12:51	EDV3953	CRJ9	D	17	72.7
04/22/2017 13:10	CPZ5712	E170	D	30L	72.5
04/01/2017 9:32	SCX725	B738	D	30L	72.2
04/18/2017 13:06	DAL1280	A320	A	17	72.2

(RMT Site#18)

75th St. & 17th Ave., Richfield

Date/Time	Flight Number	Aircraft Type	Arrival/ Departure	Runway	Lmax(dB)
04/08/2017 12:14	DAL121	B777	D	22	89
04/12/2017 10:13	DAL821	MD80	D	17	84.4
04/10/2017 18:14	DAL1103	B739	A	30L	84.4
04/24/2017 10:33	DAL519	B739	D	17	83.8
04/08/2017 15:48	DAL2432	MD80	D	17	83.6
04/02/2017 14:43	AAL1409	MD80	D	17	83.1
04/12/2017 7:33	UPS2557	MD11	D	17	83
04/02/2017 15:31	DAL1381	MD80	D	17	82.7
04/19/2017 14:22	DAL1272	MD80	D	17	82.7
04/19/2017 13:44	DAL86	MD80	D	17	82.7

Top Ten Loudest Aircraft Noise Events for MSP

April 2017

(RMT Site#19)

16th Ave. & 84th St., Bloomington

Date/Time	Flight Number	Aircraft Type	Arrival/ Departure	Runway	Lmax(dB)
04/08/2017 12:14	DAL121	B777	D	22	84
04/14/2017 10:02	DAL1867	MD80	D	17	83.2
04/19/2017 13:44	DAL86	MD80	D	17	83
04/14/2017 11:47	DAL1915	MD80	D	17	82.1
04/14/2017 15:47	DAL1381	MD80	D	17	81.9
04/13/2017 10:52	DAL2318	MD80	D	17	81.7
04/03/2017 9:11	DAL853	MD80	D	17	81.6
04/25/2017 7:08	BMJ64	BE65	D	17	81.6
04/14/2017 20:28	AAL2201	MD80	D	17	81.6
04/14/2017 9:09	DAL853	MD80	D	17	81.2

(RMT Site#20)

75th St. & 3rd Ave., Richfield

Date/Time	Flight Number	Aircraft Type	Arrival/ Departure	Runway	Lmax(dB)
04/25/2017 14:11	WBR2221	C208	D	30R	84.1
04/06/2017 7:11	BMJ74	BE80	D	30L	81.1
04/01/2017 9:51	DAL720	A320	D	30L	79.7
04/21/2017 14:32	DAL700	B717	D	30L	78.8
04/28/2017 20:25	SWA759	B7377	D	30L	78.7
04/22/2017 13:19	DAL1553	B738	D	30L	76.5
04/26/2017 14:01	WBR2221	C208	D	30L	76.3
04/25/2017 15:59	SCX387	B738	D	30L	76.2
04/09/2017 22:33	DAL2896	MD80	D	30L	76
04/04/2017 18:10	DAL1938	B739	A	35	76

(RMT Site#21)

Barbara Ave. & 67th St., Inver Grove Heights

Date/Time	Flight Number	Aircraft Type	Arrival/ Departure	Runway	Lmax(dB)
04/08/2017 11:37	DAL1469	A330	D	12R	82.7
04/09/2017 17:22	DAL883	MD80	D	12L	81.9
04/29/2017 19:52	DAL2654	MD80	D	12L	81.7
04/25/2017 19:42	DAL162	A330	D	12R	81.3
04/14/2017 11:27	DAL121	B777	D	12R	80.2
04/08/2017 10:55	N27493	UKN	D	12R	79.9
04/30/2017 9:05	DAL1815	MD80	D	12L	79.9
04/30/2017 9:14	DAL1579	MD80	D	12L	79.8
04/19/2017 9:12	DAL1579	MD80	D	12L	79.6
04/09/2017 17:13	DAL53	MD80	D	12L	79.6

Top Ten Loudest Aircraft Noise Events for MSP

April 2017

(RMT Site#22)

Anne Marie Trail, Inver Grove Heights

Date/Time	Flight Number	Aircraft Type	Arrival/ Departure	Runway	Lmax(dB)
04/08/2017 23:07	DAL1624	MD80	D	12L	81.2
04/09/2017 0:31	DAL2644	MD80	D	12R	81.1
04/27/2017 14:45	AAL312	MD80	A	30L	80.8
04/08/2017 22:33	DAL2656	MD80	D	12R	80.7
04/10/2017 16:14	UPS2560	MD11	A	30L	80.6
04/19/2017 9:38	AAL1405	MD80	D	12R	80
04/27/2017 8:13	DAL1997	MD80	A	30R	80
04/21/2017 16:48	DAL1272	MD80	A	30L	79.9
04/04/2017 5:56	FDX1407	MD11	A	30L	79.4
04/30/2017 20:43	DAL958	MD80	D	12R	79.3

(RMT Site#23)

End of Kenndon Ave., Mendota Heights

Date/Time	Flight Number	Aircraft Type	Arrival/ Departure	Runway	Lmax(dB)
04/19/2017 9:11	DAL1579	MD80	D	12L	93.1
04/30/2017 18:08	DAL1357	MD80	D	12L	92.8
04/03/2017 20:42	DAL1318	MD80	D	12L	92.7
04/19/2017 21:38	DAL1415	MD80	D	12L	92.5
04/19/2017 21:04	DAL1556	MD80	D	12L	92.1
04/19/2017 16:20	DAL883	MD80	D	12L	91.7
04/30/2017 20:26	DAL1632	MD80	D	12L	91.5
04/30/2017 14:21	DAL1272	MD80	D	12L	91.4
04/08/2017 10:14	DAL971	MD80	D	12L	91.2
04/03/2017 13:33	DAL86	MD80	D	12L	91.1

(RMT Site#24)

Chapel Ln. & Wren Ln., Eagan

Date/Time	Flight Number	Aircraft Type	Arrival/ Departure	Runway	Lmax(dB)
04/26/2017 8:04	DAL1650	B757	A	30R	89.2
04/08/2017 23:06	DAL1624	MD80	D	12L	87.7
04/30/2017 10:53	DAL2318	MD80	D	12R	86.7
04/17/2017 8:05	DAL1650	B757	A	30R	85.5
04/11/2017 9:59	SWA1444	B7377	A	30L	85.3
04/19/2017 15:30	DAL988	MD80	D	12L	85.2
04/17/2017 21:05	DAL1415	MD80	D	12R	84.7
04/30/2017 20:43	DAL958	MD80	D	12R	83.4
04/18/2017 17:56	DAL1938	B757	A	30R	83.2
04/27/2017 10:19	DAL1449	MD80	A	30L	83.1

Top Ten Loudest Aircraft Noise Events for MSP

April 2017

(RMT Site#25)

Moonshine Park 1321 Jurdy Rd., Eagan

Date/Time	Flight Number	Aircraft Type	Arrival/ Departure	Runway	Lmax(dB)
04/23/2017 15:33	Unknown	UKN	D	12R	86.3
04/03/2017 13:27	DAL2655	MD80	D	12R	84.8
04/20/2017 16:16	UPS2560	MD11	A	30L	82.3
04/30/2017 22:13	DAL2656	MD80	D	12R	82.1
04/30/2017 13:17	DAL775	MD80	D	12R	81.4
04/19/2017 21:22	DAL2644	MD80	D	12R	81.3
04/03/2017 17:57	DAL1718	MD80	D	12R	81.2
04/29/2017 12:44	AAL2455	MD80	D	12R	80.9
04/03/2017 22:22	DAL2896	MD80	D	12R	80.8
04/30/2017 15:27	DAL1381	MD80	D	12R	80.8

(RMT Site#26)

6796 Arkansas Ave. W., Inver Grove Heights

Date/Time	Flight Number	Aircraft Type	Arrival/ Departure	Runway	Lmax(dB)
04/30/2017 11:52	DAL1915	MD80	D	12L	87.7
04/30/2017 9:14	DAL1579	MD80	D	12L	84.3
04/19/2017 16:21	DAL883	MD80	D	12L	83.3
04/03/2017 18:04	DAL1357	MD80	D	12L	83.2
04/25/2017 19:42	DAL162	A330	D	12R	82.5
04/30/2017 13:11	DAL86	MD80	D	12L	81.8
04/09/2017 13:28	DAL86	MD80	D	12L	81.7
04/30/2017 9:05	DAL1815	MD80	D	12L	81.6
04/08/2017 11:36	DAL1469	A330	D	12R	81.5
04/29/2017 19:52	DAL2654	MD80	D	12L	81.4

(RMT Site#27)

Anthony School 5757 Irving Ave. S., Minneapolis

Date/Time	Flight Number	Aircraft Type	Arrival/ Departure	Runway	Lmax(dB)
04/10/2017 9:12	DAL1815	MD80	D	30L	91.1
04/20/2017 15:45	DAL988	MD80	D	30L	89.7
04/27/2017 12:03	DAL1915	MD80	D	30L	89.7
04/26/2017 8:01	DAL1122	MD80	D	30R	89.6
04/05/2017 9:01	DAL1815	MD80	D	30L	89.5
04/28/2017 13:37	DAL2655	MD80	D	30L	89.4
04/17/2017 9:01	DAL1815	MD80	D	30L	89
04/05/2017 7:50	DAL1122	MD80	D	30L	88.7
04/19/2017 7:52	DAL1122	MD80	D	30L	88.6
04/28/2017 7:50	DAL1122	MD80	D	30L	88.4

Top Ten Loudest Aircraft Noise Events for MSP

April 2017

(RMT Site#28)

6645 16th Ave. S., Richfield

Date/Time	Flight Number	Aircraft Type	Arrival/ Departure	Runway	Lmax(dB)
04/21/2017 19:47	AAL2201	MD80	D	30L	89.1
04/09/2017 22:33	DAL2896	MD80	D	30L	87.7
04/11/2017 9:35	Unknown	UKN	D	30L	86.7
04/26/2017 15:25	DAL988	MD80	D	30L	86
04/09/2017 11:46	SCX782	B738	A	12R	85.7
04/03/2017 7:20	RPA4635	E170	D	17	85.1
04/12/2017 11:53	DAL1915	MD80	D	17	84.9
04/10/2017 18:02	DAL1718	MD80	D	30L	84.8
04/24/2017 10:49	DAL2318	MD80	D	17	84.5
04/09/2017 19:52	DAL731	MD80	D	30L	84.4

(RMT Site#29)

Ericsson Elem. School 4315 31st Ave. S., Minneapolis

Date/Time	Flight Number	Aircraft Type	Arrival/ Departure	Runway	Lmax(dB)
04/20/2017 18:09	DAL1357	MD80	D	30R	89.6
04/20/2017 17:16	DAL86A	MD80	D	30R	88.3
04/10/2017 13:57	DAL505	MD80	D	30R	87.5
04/18/2017 20:47	DAL1318	MD80	D	30R	87.2
04/16/2017 15:20	DAL2073	MD80	D	30R	86.7
04/11/2017 13:50	DAL505	MD80	D	30R	85.7
04/04/2017 19:55	Unknown	UKN	D	30R	85.4
04/11/2017 13:18	DAL86	MD80	D	30R	85.4
04/20/2017 14:20	DAL1272	MD80	D	30R	84
04/27/2017 9:43	DAL517	MD80	D	30R	83.8

(RMT Site#30)

8715 River Ridge Rd., Bloomington

Date/Time	Flight Number	Aircraft Type	Arrival/ Departure	Runway	Lmax(dB)
04/25/2017 15:46	DAL1381	MD80	D	17	91.9
04/19/2017 11:50	DAL1915	MD80	D	17	91.7
04/22/2017 12:38	Unknown	UKN	D	17	91
04/25/2017 15:23	DAL988	MD80	D	17	91
04/03/2017 10:58	DAL2318	MD80	D	17	90.7
04/14/2017 10:02	DAL1867	MD80	D	17	90.5
04/13/2017 18:14	DAL1718	MD80	D	17	90.5
04/13/2017 14:49	AAL1409	MD80	D	17	90.2
04/14/2017 9:09	DAL853	MD80	D	17	90.1
04/12/2017 18:19	DAL1718	MD80	D	17	89.3

Top Ten Loudest Aircraft Noise Events for MSP

April 2017

(RMT Site#31)

9501 12th Ave. S., Bloomington

Date/Time	Flight Number	Aircraft Type	Arrival/ Departure	Runway	Lmax(dB)
04/25/2017 15:46	DAL1381	MD80	D	17	84.4
04/15/2017 14:38	FFT327	A320	D	17	81.9
04/12/2017 10:46	MWT963	FA50	D	17	81.6
04/24/2017 10:02	DAL1867	MD80	D	17	81.4
04/08/2017 11:07	DAL1867	MD80	D	17	80.1
04/02/2017 17:49	DAL1718	MD80	D	17	79.9
04/18/2017 13:53	DAL2655	MD80	D	17	79.3
04/15/2017 16:28	SCX105	B738	D	17	78.6
04/01/2017 14:48	SWA6314	B738	D	17	78.6
04/14/2017 18:05	DAL2819	B739	D	17	77.7

(RMT Site#32)

10325 Pleasant Ave. S., Bloomington

Date/Time	Flight Number	Aircraft Type	Arrival/ Departure	Runway	Lmax(dB)
04/18/2017 13:53	DAL2655	MD80	D	17	79.6
04/25/2017 15:47	DAL1381	MD80	D	17	78.7
04/25/2017 9:03	DAL1815	MD80	D	30L	77.7
04/10/2017 0:05	DAL2656	MD80	D	30L	76.8
04/24/2017 11:08	SWA1444	B7377	D	17	76.3
04/21/2017 22:03	DAL2656	MD80	D	30L	75.6
04/24/2017 10:03	DAL1867	MD80	D	17	75.5
04/18/2017 6:59	BMJ74	BE80	D	17	75.5
04/18/2017 13:50	CPZ5783	E170	D	17	75.4
04/14/2017 18:05	DAL2819	B739	D	17	75

(RMT Site#33)

North River Hills Park, Burnsville

Date/Time	Flight Number	Aircraft Type	Arrival/ Departure	Runway	Lmax(dB)
04/23/2017 13:29	DAL2655	MD80	D	17	83.7
04/25/2017 15:24	DAL988	MD80	D	17	82.4
04/25/2017 10:05	DAL1867	MD80	D	17	81.5
04/12/2017 13:30	DAL2655	MD80	D	17	80.7
04/22/2017 15:36	DAL988	MD80	D	17	80.7
04/02/2017 10:05	DAL1867	MD80	D	17	80.7
04/09/2017 11:03	DAL1867	MD80	D	17	80.3
04/25/2017 16:16	AAL46	MD80	D	17	80
04/25/2017 14:33	AAL1409	MD80	D	17	79.9
04/25/2017 12:46	AAL2455	MD80	D	17	79.4

Top Ten Loudest Aircraft Noise Events for MSP

April 2017

(RMT Site#34)
Red Oak Park, Burnsville

Date/Time	Flight Number	Aircraft Type	Arrival/ Departure	Runway	Lmax(dB)
04/22/2017 12:39	Unknown	UKN	D	17	82.4
04/22/2017 15:36	DAL988	MD80	D	17	81.5
04/25/2017 15:24	DAL988	MD80	D	17	81.3
04/25/2017 11:50	DAL1915	MD80	D	17	81.2
04/22/2017 11:55	DAL1915	MD80	D	17	80.6
04/22/2017 12:45	AAL2455	MD80	D	17	80.3
04/01/2017 20:38	DAL1415	MD80	D	17	80.3
04/25/2017 14:34	AAL1409	MD80	D	17	79.7
04/25/2017 12:47	AAL2455	MD80	D	17	79.6
04/22/2017 20:34	DAL1415	MD80	D	17	79.1

(RMT Site#35)
2100 Garnet Ln., Eagan

Date/Time	Flight Number	Aircraft Type	Arrival/ Departure	Runway	Lmax(dB)
04/13/2017 15:27	DAL1381	MD80	D	17	85.2
04/12/2017 16:14	AAL46	MD80	D	17	85
04/12/2017 10:49	DAL2318	MD80	D	17	84.7
04/13/2017 14:50	AAL1409	MD80	D	17	84.5
04/18/2017 10:13	DAL821	MD80	D	17	84.5
04/11/2017 20:04	AAL2201	MD80	D	17	84.3
04/12/2017 9:34	AAL1405	MD80	D	17	84.3
04/23/2017 18:16	DAL731	MD80	D	17	84.1
04/03/2017 8:15	DAL1122	MD80	D	17	83.8
04/25/2017 10:50	DAL2318	MD80	D	17	83.7

(RMT Site#36)
Briar Oaks & Scout Pond, Apple Valley

Date/Time	Flight Number	Aircraft Type	Arrival/ Departure	Runway	Lmax(dB)
04/19/2017 11:51	DAL1915	MD80	D	17	83.6
04/15/2017 19:51	DAL976	MD80	A	35	82.3
04/22/2017 10:53	DAL2318	MD80	D	17	81.8
04/26/2017 17:05	FDX798	MD11	A	35	81.4
04/01/2017 10:49	DAL2318	MD80	D	17	81.1
04/06/2017 13:17	DAL1867	MD80	A	35	80.9
04/25/2017 10:51	DAL2318	MD80	D	17	79.7
04/05/2017 17:29	FDX798	MD11	A	35	79.6
04/11/2017 20:04	AAL2201	MD80	D	17	79.5
04/01/2017 12:49	AAL2455	MD80	D	17	79.4

Top Ten Loudest Aircraft Noise Events for MSP

April 2017

(RMT Site#37)

4399 Woodgate Ln. N., Eagan

Date/Time	Flight Number	Aircraft Type	Arrival/ Departure	Runway	Lmax(dB)
04/29/2017 11:54	DAL1915	MD80	D	17	87.3
04/14/2017 12:44	AAL2455	MD80	D	17	85.7
04/23/2017 14:41	AAL1409	MD80	D	17	85.4
04/15/2017 9:32	AAL1405	MD80	D	17	84.6
04/02/2017 11:50	DAL1915	MD80	D	17	84.6
04/23/2017 12:43	AAL2455	MD80	D	17	84.2
04/15/2017 9:49	DAL821	MD80	D	17	83.9
04/23/2017 18:17	DAL731	MD80	D	17	83.8
04/14/2017 10:09	DAL821	MD80	D	17	83.7
04/09/2017 12:49	AAL2455	MD80	D	17	83.4

(RMT Site#38)

3957 Turquoise Cir., Eagan

Date/Time	Flight Number	Aircraft Type	Arrival/ Departure	Runway	Lmax(dB)
04/03/2017 10:59	DAL2318	MD80	D	17	88.1
04/13/2017 20:28	DAL2644	MD80	D	17	86.9
04/23/2017 10:53	DAL2318	MD80	D	17	86.7
04/03/2017 9:18	DAL1815	MD80	D	17	85.7
04/09/2017 11:48	DAL1915	MD80	D	17	85.6
04/18/2017 13:08	DAL1915	MD80	D	17	85.6
04/23/2017 11:51	DAL1915	MD80	D	17	85.5
04/12/2017 12:43	AAL2455	MD80	D	17	85.5
04/15/2017 8:03	DAL1122	MD80	D	17	85.4
04/22/2017 7:59	DAL1122	MD80	D	17	85.4

(RMT Site#39)

3477 St. Charles Pl., Eagan

Date/Time	Flight Number	Aircraft Type	Arrival/ Departure	Runway	Lmax(dB)
04/24/2017 18:14	DAL1357	MD80	D	17	87.2
04/14/2017 7:54	DAL1122	MD80	D	17	86.8
04/19/2017 15:09	AAL1409	MD80	D	17	86.4
04/08/2017 15:49	DAL2432	MD80	D	17	86.4
04/12/2017 15:00	DAL883	MD80	D	17	86.1
04/22/2017 10:15	DAL971	MD80	D	17	86
04/02/2017 13:33	DAL86	MD80	D	17	85.7
04/14/2017 14:19	DAL1272	MD80	D	17	85.5
04/14/2017 15:34	DAL988	MD80	D	17	85.4
04/12/2017 13:10	DAL86	MD80	D	17	85.4

April 2017 Remote Monitoring Tower Top Ten Summary

The top ten noise events and the event ranges at each RMT for April 2017 were comprised of 77.2% departure operations. The predominant top ten aircraft type was the MD80 with 71.7% of the highest Lmax events.

April 2017 Technical Advisor Report Notes

Unknown fields are due to unavailability of these details in the flight tracking data.

Analysis of Aircraft Noise Events DNL

April 2017

Remote Monitoring Towers

Date	#1	#2	#3	#4	#5	#6	#7	#8	#9	#10	#11	#12	#13	#14	#15
04/01/17	52.7	54.9	62.1	58.7	65.8	67.3	54.6	57.4	NA	NA	NA	NA	NA	57.9	31.1
04/02/17	58.9	61.1	66.3	61.1	69.4	67.2	52.2	NA	NA	NA	NA	NA	56.7	61.7	58.9
04/03/17	59.2	61.6	66.1	61.2	69.3	68.7	57	57.4	NA	NA	NA	NA	55.7	64.1	56.2
04/04/17	52.3	53.8	58.9	59.9	69.1	69.9	65.8	60.2	NA	43.6	NA	NA	39.1	60.6	48.4
04/05/17	51.8	54.9	59.6	59.2	68	69.3	62.7	59.2	28.1	36	NA	36.1	NA	58.5	43
04/06/17	47.6	47.7	57.7	58.5	68.9	68.7	63.8	58.4	NA	38.2	NA	26.5	NA	58.4	27.9
04/07/17	56.8	58.4	64.5	58.9	68.2	67.3	51.6	51.2	NA	NA	NA	NA	58.1	61.7	62
04/08/17	59.8	58.8	67.1	58.5	70.2	64	34.8	29.6	33.4	37.2	NA	32.6	59.9	62.9	59.4
04/09/17	57.7	58.2	64.8	60.5	70.3	69.4	64.5	59.4	NA	NA	NA	NA	53.1	61.5	53.1
04/10/17	54	54.8	60	61.2	70.3	70.5	67.3	61.1	NA	NA	NA	NA	NA	60.9	42
04/11/17	51.7	54.8	57.8	58.4	67.3	68.7	64.3	60.2	NA	31.6	NA	NA	55.9	62.8	55.6
04/12/17	60	63.3	65.2	62.6	69	68.2	46.6	39.4	NA	NA	NA	NA	58.4	62.7	60.7
04/13/17	61.2	64.6	67.3	64	70.5	69.2	38.1	NA	NA	NA	NA	NA	57	63.7	58.9
04/14/17	61.7	63.8	68.4	63.1	71.4	68.4	49	41.8	NA	NA	NA	41.5	57.3	62.8	61.5
04/15/17	54.6	55.3	62.3	58.3	67.3	65.5	57.2	55.2	NA	NA	NA	NA	54.3	60.3	57.4
04/16/17	48.8	51.8	55.4	58.4	67.5	67.7	64.3	57.3	NA	NA	NA	NA	28.4	58.9	NA
04/17/17	55.5	58.5	62	60	69	69.2	62.6	59	NA	NA	NA	NA	54	61.5	54.1
04/18/17	58	62.4	62.7	63.5	68.3	70.6	62.6	58.4	57.7	59.9	NA	NA	53.3	62.8	55.6
04/19/17	60	62.2	66	62.4	70.6	69.8	60.9	56.4	NA	NA	NA	29.5	59.4	61.8	61
04/20/17	55.9	60.4	62.3	64	69.8	71.8	65.7	60.3	NA	NA	NA	37.2	47.7	62.6	41.5
04/21/17	53.4	55.5	59.4	60.7	69.9	71.6	66.3	60.9	29.2	39.6	NA	NA	NA	60.4	35.2
04/22/17	53.4	55.8	60.4	59.9	66.7	67.4	53.8	55.2	30	28.6	NA	NA	45.6	61.7	46.8
04/23/17	57.1	61.2	62.7	62.9	70	70	62.7	55.5	NA	NA	NA	30.5	51.6	56.2	51.1
04/24/17	59	61.7	65.8	61.8	69.3	67.5	35.5	31.4	NA	NA	NA	NA	57.9	62.6	60.6
04/25/17	58.5	61	65.5	61.6	69.5	69.4	49.7	57.4	NA	NA	NA	NA	57.7	61.9	59.4
04/26/17	54.4	56.7	60.2	60.7	69.7	71.6	66.3	61.5	30.5	35.1	NA	NA	39.2	61.7	38.6
04/27/17	53.1	55	59.5	61.7	69.5	70.9	65.9	61.8	NA	29.2	NA	NA	NA	61.8	33.4
04/28/17	54.1	57.6	60.3	60.8	69.5	71	66	60.8	32.1	32.6	NA	NA	NA	61.2	38.5
04/29/17	56.6	58.3	64	57.5	67.7	63.6	NA	32	NA	NA	NA	NA	54.4	60.9	55.3
04/30/17	60.6	61	66.9	60.2	70.4	65.8	33.7	31.4	28.3	32.9	NA	40.3	58.5	63.5	58.9
Mo.DNL	57.2	59.6	63.9	61.1	69.3	69.1	62.4	58	48.8	49.4	N/A	36.8	55.8	61.7	56.7

Remote Monitoring Terminal (RMT) #11 in St. Paul is being relocated and temporarily disassembled due to construction on the property where the RMT was located. As a result, data for RMT 11 are not available beyond July 17, 2016.

Analysis of Aircraft Noise Events DNL

April 2017

Remote Monitoring Towers

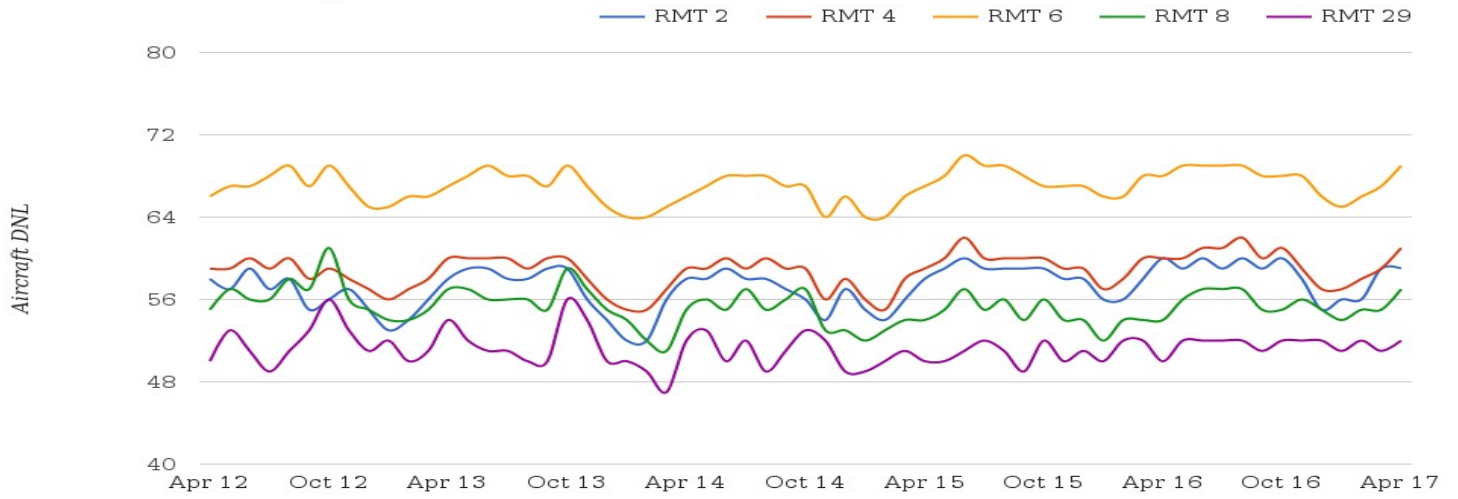
Date	#16	#17	#18	#19	#20	#21	#22	#23	#24	#25	#26	#27	#28	#29
04/01/17	63.8	42.2	56.2	51.5	43.8	29.1	56.9	42	58.5	38.2	33.4	56.6	56.6	50.7
04/02/17	63.7	NA	58.2	54.1	NA	44.9	53.3	64.6	58.4	52.5	53.2	50.6	55.2	NA
04/03/17	67.8	NA	54.4	48.8	NA	49.7	57	64.4	61.2	57.7	55.8	47.4	56.6	49
04/04/17	66.5	NA	44.1	30.6	35.9	38.4	59.2	53	60.8	43.1	41.9	60.8	59.1	53.8
04/05/17	64.3	29.9	55.9	47.9	37.5	44.1	56.8	46.9	59.2	41.4	41.7	60.6	56.4	51.8
04/06/17	65	43.5	38.6	35.4	44.5	29	57.1	51.9	58.9	37.6	41.5	61.3	57	49
04/07/17	62.7	NA	56.6	51.1	NA	48.9	54.1	64.6	59.4	50.6	54.9	54	57.4	43.9
04/08/17	64.1	35.9	56.4	51.3	27.9	54.4	55.5	65.8	60.2	54.8	58.1	NA	54.3	NA
04/09/17	66.4	NA	47.8	45.5	44.6	48.3	59.1	60	60.6	53	49.5	59	60.3	50.2
04/10/17	66.6	33.5	49.9	46.6	45.8	NA	60.8	34.8	61.5	49.8	28.7	62.2	62.6	55.7
04/11/17	67	NA	44.6	39.8	35.3	51.5	58.7	61.2	61.5	53.1	53.2	59	58.2	55.1
04/12/17	65	29.8	57.7	54.1	NA	50.2	51.5	65	59.7	56.9	55	35.4	57.8	NA
04/13/17	65.8	NA	57.6	54	NA	49.2	52.1	64.1	59.9	57.7	54	40.9	58.1	NA
04/14/17	64.9	28.1	58	55.2	NA	49.6	50	65.2	59.9	56.9	54.5	37.6	57.9	NA
04/15/17	64.4	34.2	50.1	48.1	37.4	41.3	58.1	62.2	59.4	46	51	53.2	53.8	47
04/16/17	66.7	NA	39.1	NA	NA	35.7	57.9	41.9	59.9	39.2	39.4	58.4	57.4	54.9
04/17/17	64.7	NA	48.9	42.3	36.1	46.7	57.5	60.5	60.2	49.3	52.5	60.1	56.2	54
04/18/17	65.6	40.6	55.7	51.9	40.7	44.7	57.5	61.2	61.1	50.4	52.2	54	59.7	55.7
04/19/17	65	NA	55	50	NA	52.1	54.9	66.3	59	55.5	54.8	58.5	56.6	52.5
04/20/17	67.2	NA	39.5	40.9	38.5	NA	60.7	53.7	62.3	49.8	44.8	60.9	60.2	57.7
04/21/17	66	NA	45	31.2	37.7	NA	59.4	40.7	60.9	38.9	40	61.6	59.9	54.3
04/22/17	64	36.3	51	48.8	39.8	41.2	56.2	56.1	60	40.2	51.7	52.4	51.7	50
04/23/17	61.6	NA	53.4	50.9	NA	46.9	54.1	57.8	56.5	47.6	47.6	60.3	58.9	42.5
04/24/17	63.2	NA	57.6	51	NA	44.6	51.1	64.4	58.4	55.9	53.6	35.6	57.1	NA
04/25/17	65.6	40.2	52.8	51.4	42.7	51.8	56.6	64.3	59.9	57	54.3	43.7	50.7	49.5
04/26/17	66.8	NA	42.6	NA	40.3	36.4	59.8	47.9	62	39.6	43.9	61	60.8	56.1
04/27/17	66.5	33.6	40.3	28	47.1	32.9	60.1	39.9	61.9	38.1	40.3	60.2	61.9	58.5
04/28/17	66.3	NA	40.2	30.2	45.2	40.4	59.6	32.3	61.6	26.5	42	61.6	60.1	56.6
04/29/17	63.4	NA	53.3	51	NA	50.3	47.6	61.9	56.8	56.1	55.2	NA	53.8	NA
04/30/17	67.2	NA	49.7	41.2	NA	50.7	50.1	65.4	59.3	60.6	54.9	NA	50.6	NA
Mo.DNL	65.5	38.2	53.7	49.8	42.1	48.1	57.2	61.7	60.2	53.4	52.2	58.3	58.1	53.8

Analysis of Aircraft Noise Events DNL April 2017

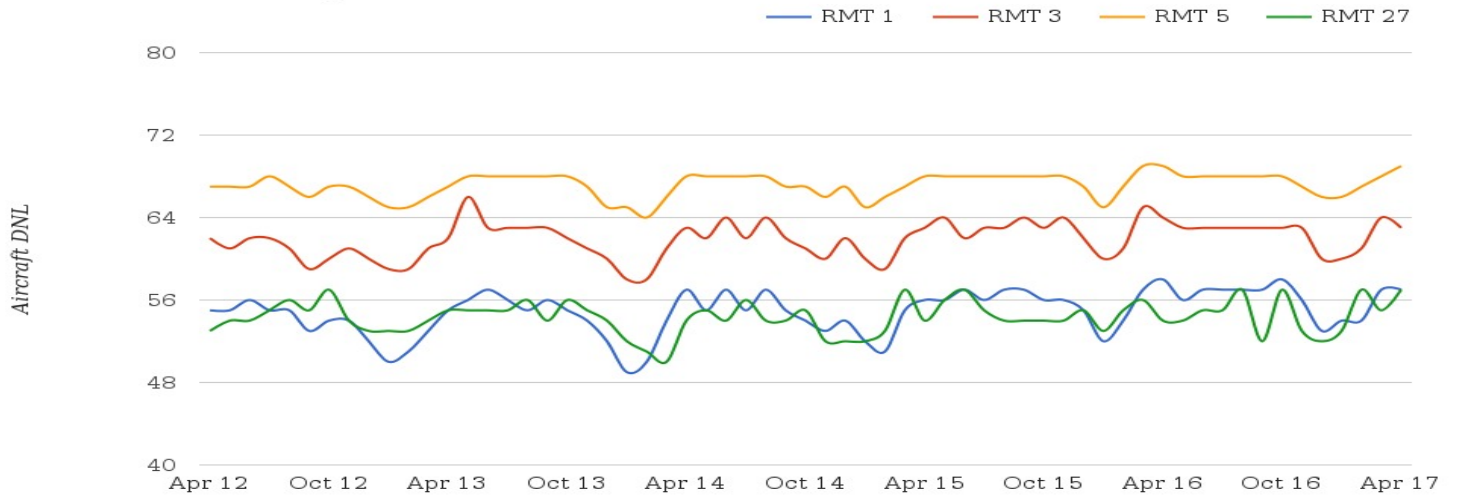
Remote Monitoring Towers

Date	#30	#31	#32	#33	#34	#35	#36	#37	#38	#39
04/01/17	64.6	47.1	44.5	53.3	51.9	56.1	52.3	49.3	NA	NA
04/02/17	63.6	49.4	42.2	47.3	44.3	49	38.7	53.5	55.8	57.1
04/03/17	59.9	42.8	28.8	38.9	31	49.2	35.4	49.3	53.3	49
04/04/17	43.7	NA	NA	NA	32.5	47.7	52.7	41.5	NA	NA
04/05/17	62.3	48.3	43.6	45.7	51.5	53.7	54.8	NA	NA	NA
04/06/17	42.8	NA	NA	NA	NA	47	52.5	NA	NA	NA
04/07/17	64.5	47.4	41.4	47	38.7	55.4	51.7	50.4	53.4	52.7
04/08/17	60.1	48	36.5	44.3	27.3	40.9	31	46.7	52.2	53
04/09/17	56.4	30	27.7	44.8	40.3	45.9	48.8	44.6	48	42.9
04/10/17	48.7	30.4	45.4	NA	NA	50.4	54.2	NA	NA	NA
04/11/17	55.1	39.8	38.9	40.9	43.5	53.9	58.2	31	31	NA
04/12/17	63.8	48.2	38.6	48.1	42	56	55.2	54.7	56.5	56.9
04/13/17	64.1	48.3	37.7	48.4	42.9	50.9	43.4	51	56.1	54.9
04/14/17	63.4	50.7	44.6	46.6	38.8	49.3	34.9	50.9	54.5	57.7
04/15/17	59.8	44.4	40.5	45.6	40.1	53.4	50.5	52.3	55.2	52.1
04/16/17	42.8	NA	NA	NA	NA	48	50.5	30.2	30.3	NA
04/17/17	53.7	36	NA	39.2	44.6	50.7	52	44.4	46.5	46.2
04/18/17	60.1	50.1	46.6	43.7	30.8	50.3	NA	48.9	49.9	54.1
04/19/17	59.2	42.1	33.6	41	39.3	49.5	46.1	48.4	51.6	53.4
04/20/17	49.6	NA	26.4	NA	NA	50.6	52.5	NA	NA	NA
04/21/17	44.9	30.3	46.4	NA	40.5	47.9	52.6	28	NA	NA
04/22/17	60.9	44.4	40.7	50	49	50	48.8	46.6	50.4	50.1
04/23/17	61.6	43.2	33.8	47.4	37.7	48.6	45.1	51.7	54.4	54.9
04/24/17	60.5	48.2	39.8	40.5	36.1	48.2	39.1	48.2	53	55.7
04/25/17	63	50.8	45.9	52.3	51.4	50.4	46.4	45	47.4	49.7
04/26/17	46.4	NA	NA	NA	NA	47.7	51.1	NA	NA	NA
04/27/17	48.6	NA	NA	NA	NA	48.4	51.3	NA	NA	NA
04/28/17	43	NA	NA	NA	NA	46.6	51.7	NA	NA	NA
04/29/17	59.8	43.1	33.7	38.8	NA	45.6	NA	49.3	52.4	51.3
04/30/17	53.8	38.6	30.1	35	NA	40.5	NA	41.2	45.1	45.8
Mo.DNL	60	46.5	41.7	46.9	45.2	50.8	51.4	49.1	52.6	53.6

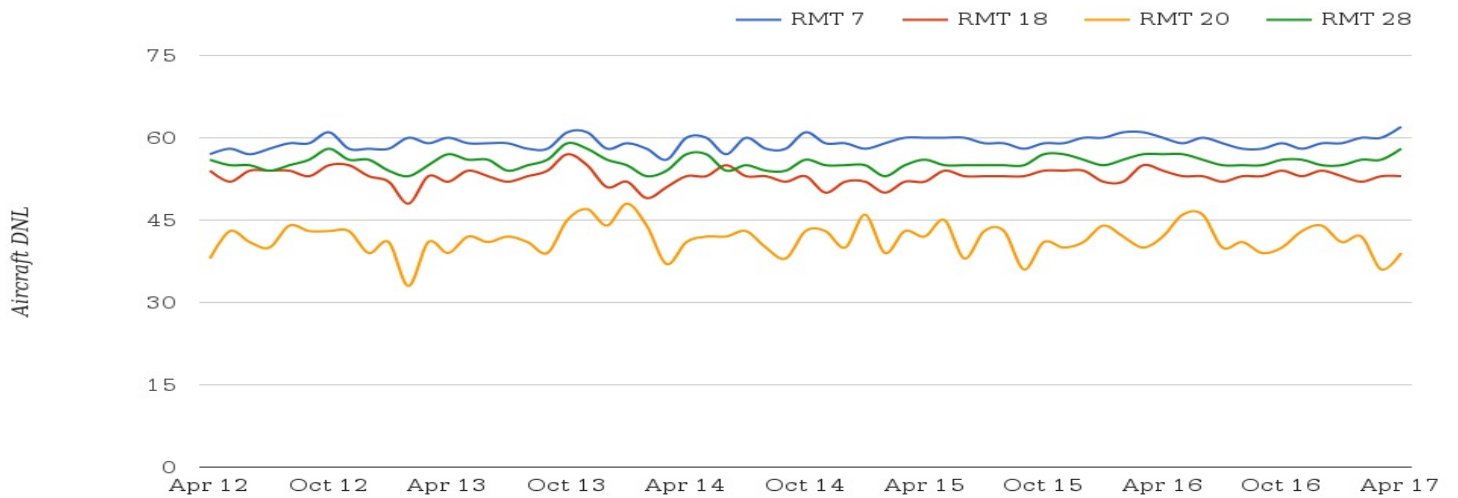
Minneapolis 12L/30R



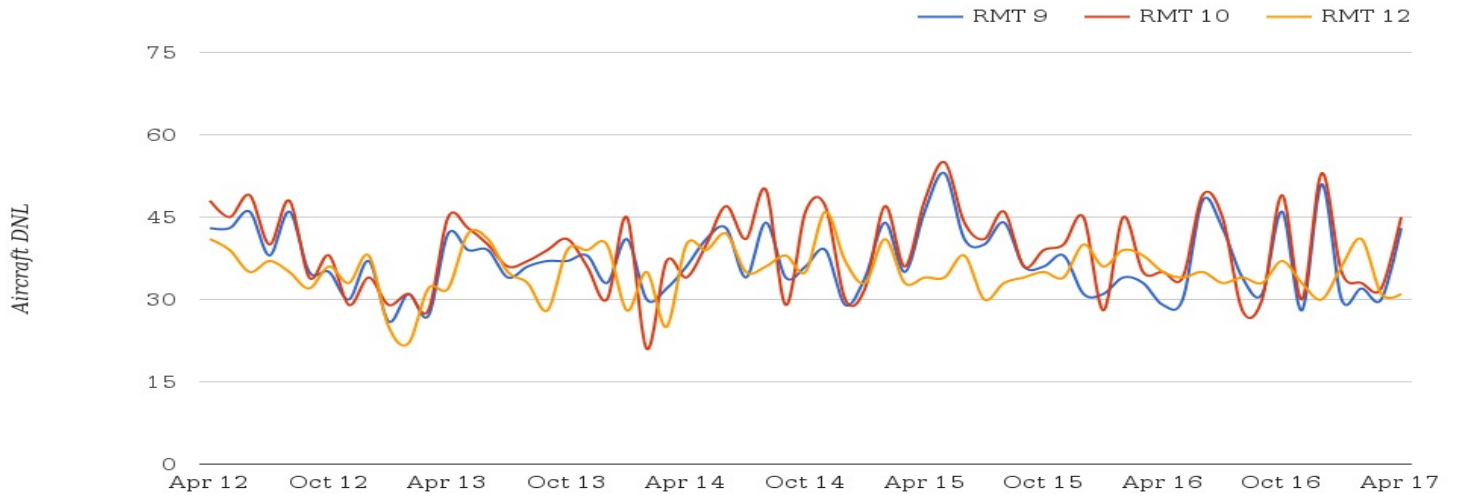
Minneapolis 12R/30L



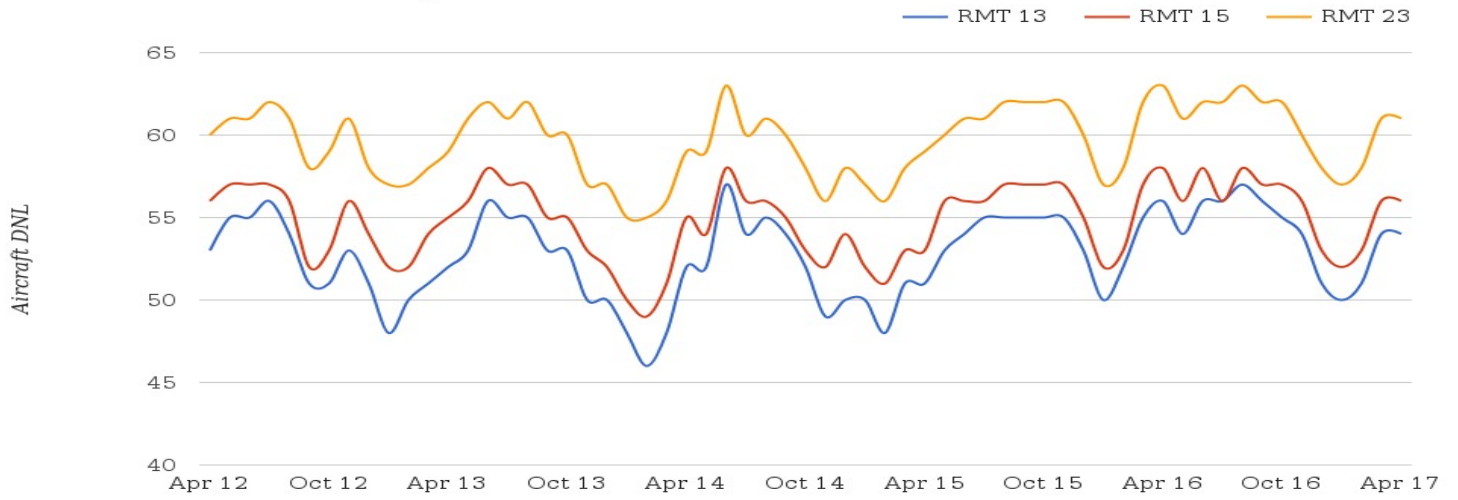
Richfield



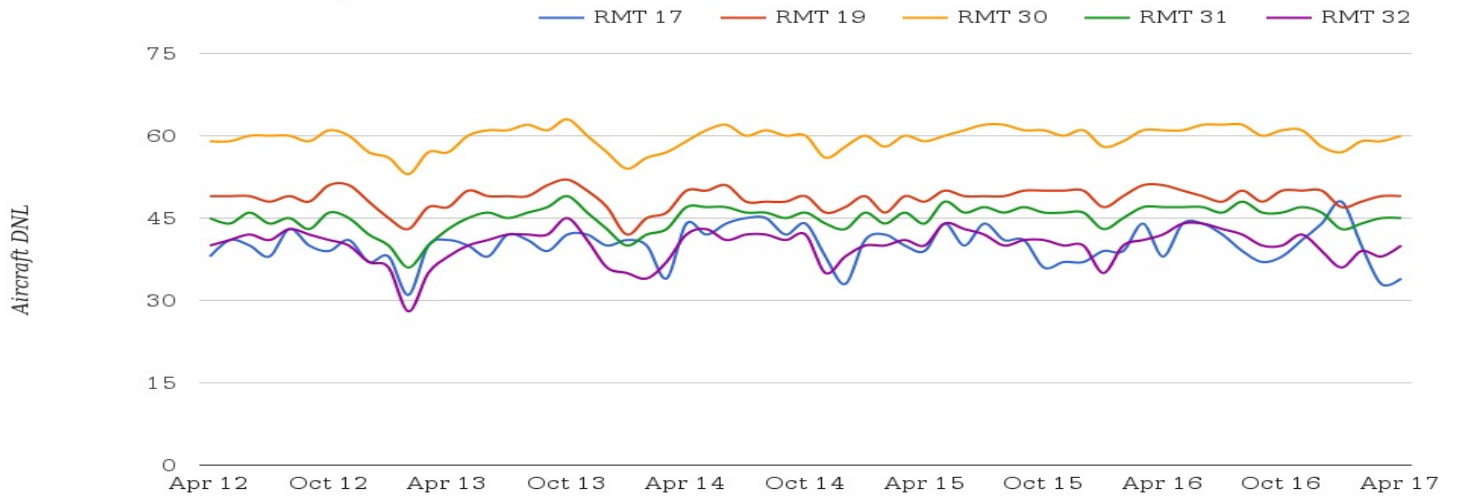
St. Paul



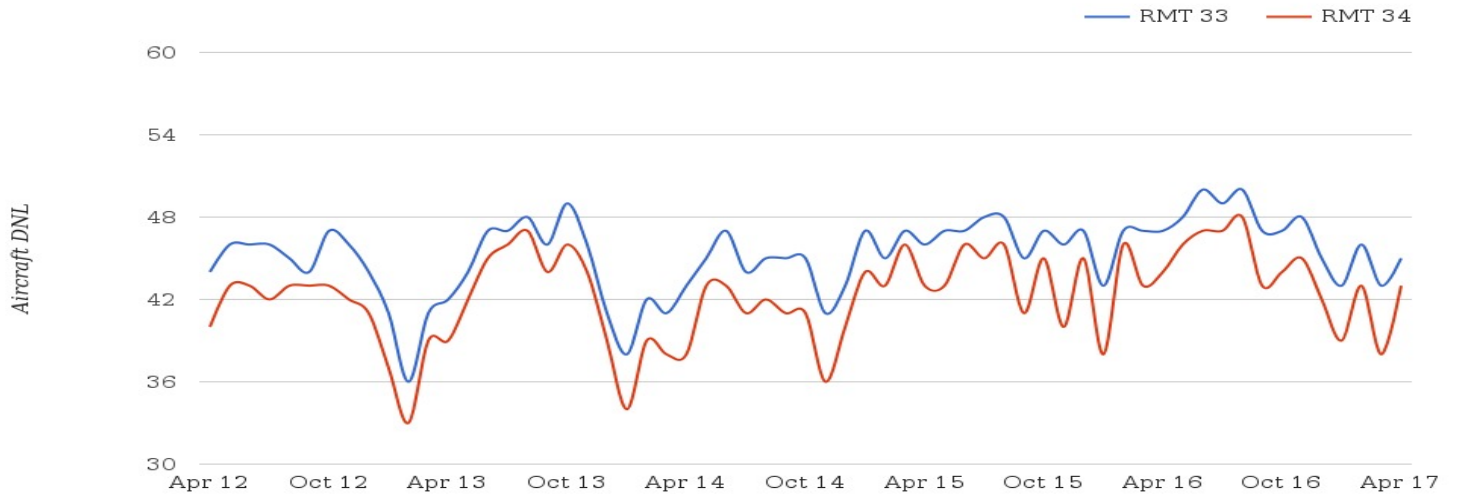
Mendota Heights



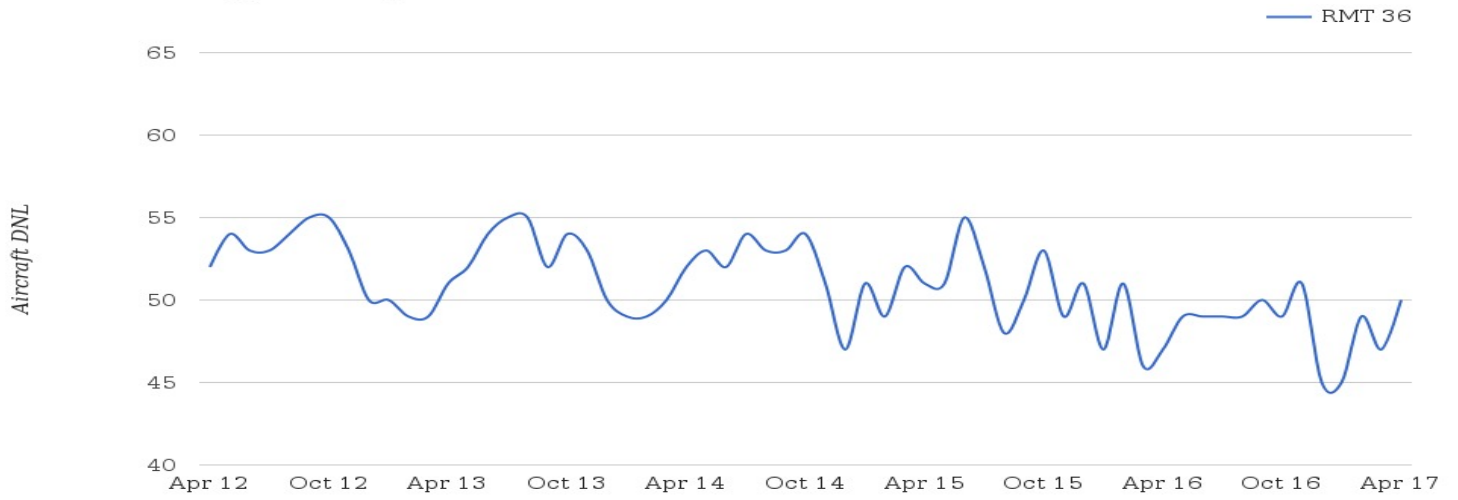
Bloomington



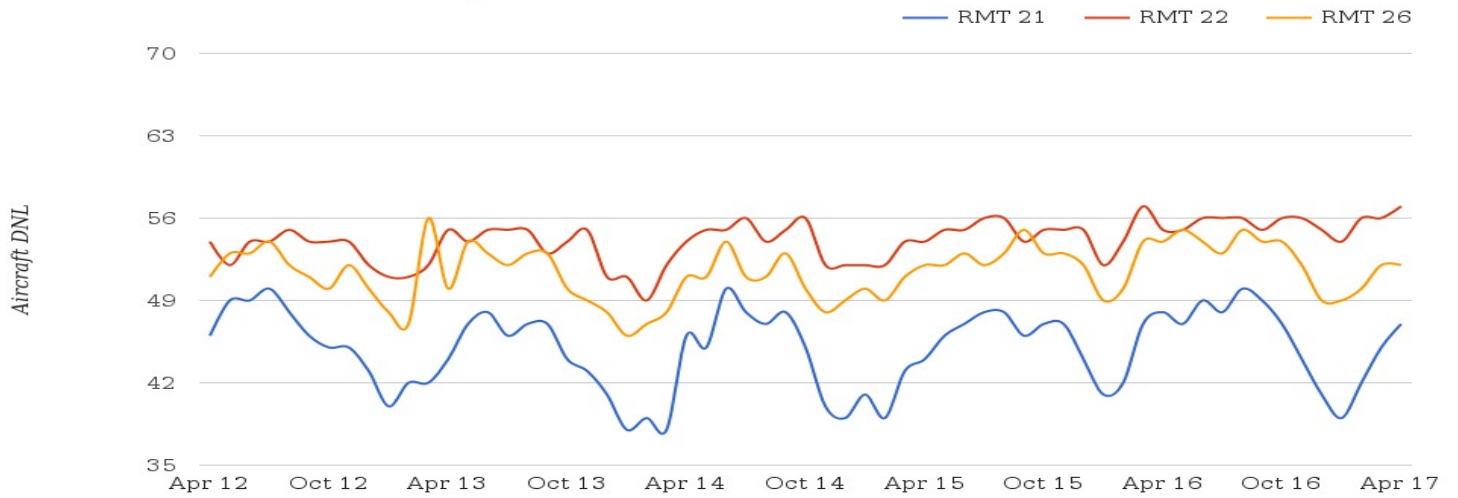
Burnsville



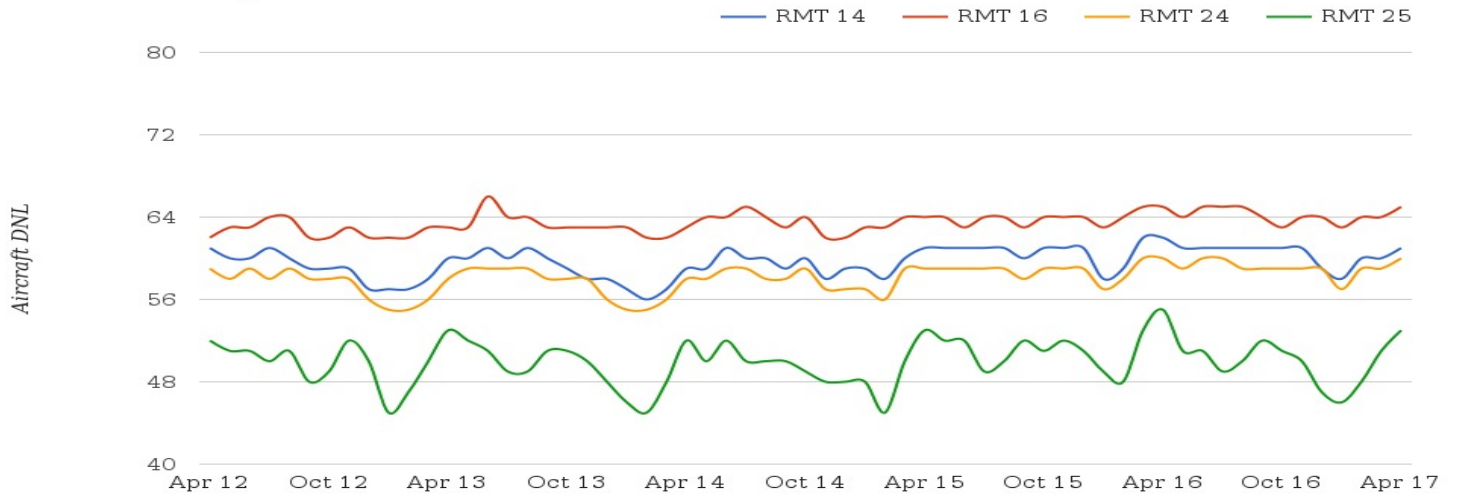
Apple Valley



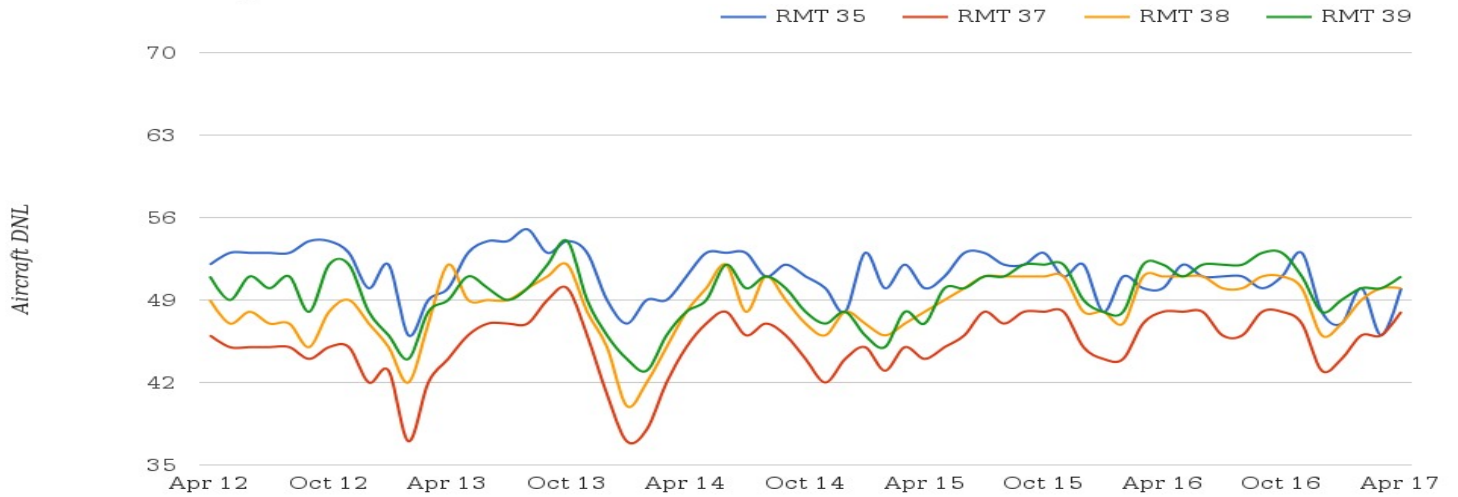
Inver Grove Heights



Eagan 12/30



Eagan 17/35



April 2017 DNL Values per RMT

