

# February 2017

---

## Noise Oversight Committee (NOC) Technical Advisor's Report



---

### Minneapolis-St. Paul International Airport



---

# Table of Contents for February 2017

---

Complaint Summary	1
Noise Complaint Map	2
FAA Available Time for Runway Usage	3
MSP All Operations Runway Usage	4
MSP Carrier Jet Operations Runway Usage	5
MSP Carrier Jet Fleet Composition	6
MSP All Operations Nighttime Runway Usage	7
MSP Carrier Jet Operations Nighttime Runway Usage	8
MSP Scheduled Nighttime Operators	9-13
MSP Top 15 Nighttime Operators by Type	14
MSP Top 15 Nighttime Operators Stage Mix	15
Airport Noise and Operations Monitoring System Flight Tracks	16-19
MSP Remote Monitoring Tower Site Locations Map	20
Time Above dB Threshold for Carrier Jet Arrival Related Noise Events	21
Time Above dB Threshold for Carrier Jet Departure Related Noise Events	22
Carrier Jet Arrival Related Noise Events	23
Carrier Jet Departure Related Noise Events	24
MSP Top Ten Aircraft Noise Events per RMT	25-37
Analysis of Daily and Monthly Aircraft Noise Events DNL	38-44

# MSP Complaints by City February 2017

City	Arrival		Departure		Other		Number of Complaints	Number of Locations	% of Total Complaints
MINNEAPOLIS	1	888	11	531	91	2897	4419	143	36.8%
INVER GROVE HEIGHTS	0	658	0	13	0	1653	2324	4	19.3%
EAGAN	0	2	12	722	30	1174	1940	30	16.2%
BURNSVILLE	0	4	4	915	4	32	959	27	8%
RICHFIELD	0	0	15	383	225	27	650	20	5.4%
BLOOMINGTON	0	0	0	488	18	15	521	7	4.3%
APPLE VALLEY	0	65	1	72	9	93	240	16	2%
GOLDEN VALLEY	0	0	0	0	0	179	179	2	1.5%
EDEN PRAIRIE	0	16	0	13	0	139	168	5	1.4%
EDINA	0	2	0	98	20	26	146	23	1.2%
MENDOTA HEIGHTS	0	0	1	43	53	33	130	14	1.1%
ST. LOUIS PARK	0	105	0	1	3	13	122	6	1%
COTTAGE GROVE	0	0	0	0	0	55	55	1	0.5%
FALCON HEIGHTS	0	23	0	0	0	19	42	1	0.3%
SAINT PAUL	0	1	0	4	1	28	34	6	0.3%
MINNETONKA	0	8	0	0	1	23	32	3	0.3%
MOUNDS VIEW	0	0	0	0	0	17	17	1	0.1%
ROSEMOUNT	0	0	0	1	0	15	16	1	0.1%
SHOREWOOD	0	0	0	0	0	7	7	1	0.1%
SAVAGE	0	0	0	3	0	0	3	1	0%
ORONO	0	1	0	1	0	0	2	1	0%
PLYMOUTH	0	0	0	0	0	2	2	1	0%
WEST ST PAUL	0	0	0	0	1	0	1	1	0%
LAKEVILLE	0	0	0	0	0	1	1	1	0%
OTHER	0	0	0	1	0	1	2	2	0%
<b>Total</b>	<b>1774</b>		<b>3333</b>		<b>6905</b>		<b>12012</b>	<b>318</b>	

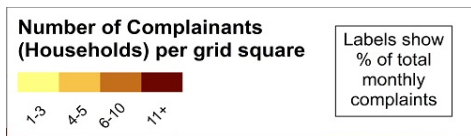
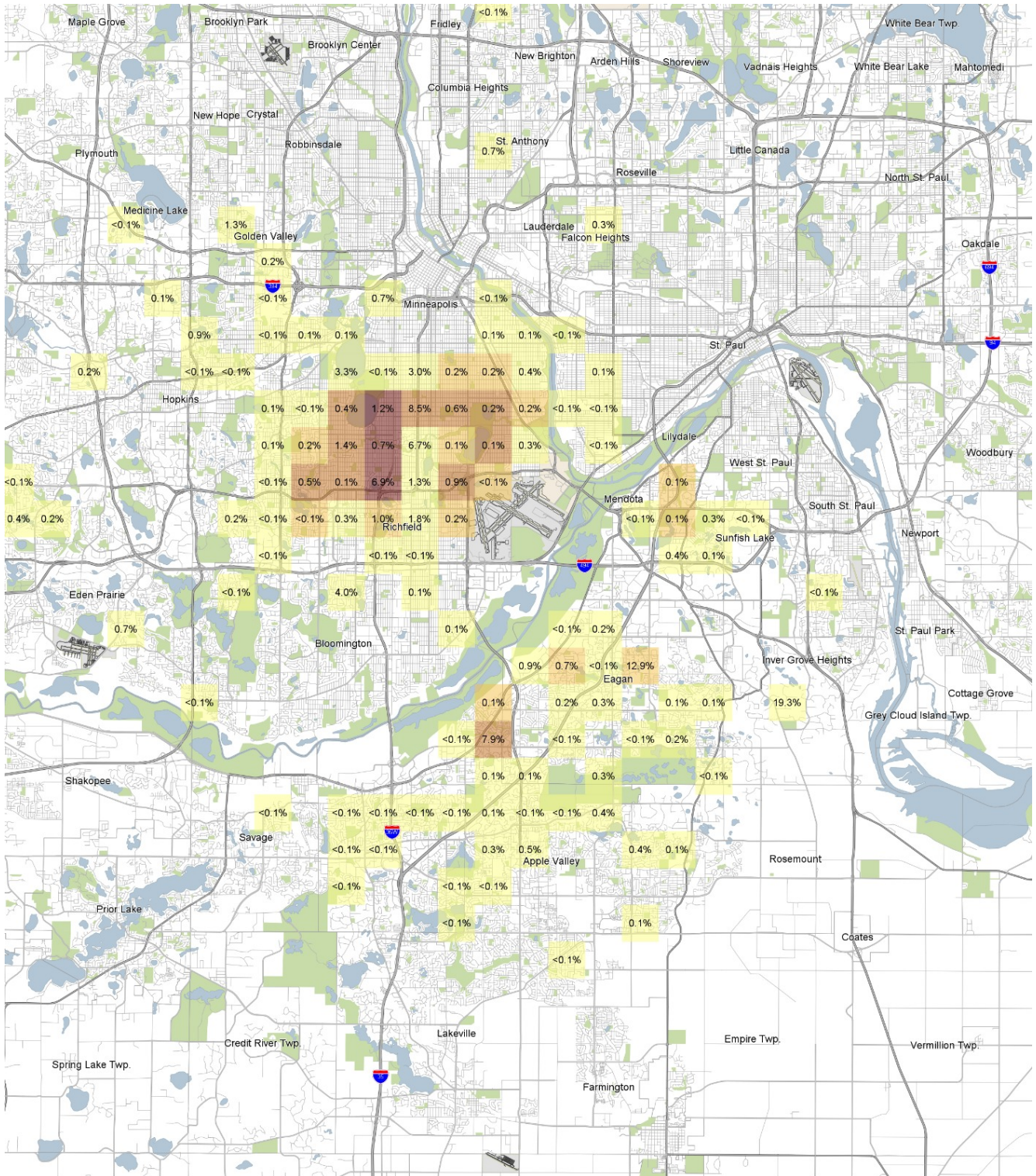
Nature of MSP Complaints		
Complaint	Total	
Early/Late	91	2554
Engine Run-up	0	253
Excessive Noise	462	11360
Frequency	249	10914
Ground Noise	22	836
Helicopter	0	88
Low Flying	70	7312
Structural Disturbance	6	3698
Other	15	1034
<b>Total</b>	<b>38964</b>	

Time of Day		
Time	Total	
0000-0559	69	370
0600-0659	93	389
0700-1159	182	3435
1200-1559	23	2139
1600-1959	73	2442
2000-2159	36	1943
2200-2259	18	590
2300-2359	7	203
<b>Total</b>	<b>12012</b>	

Complaints by Airport	
Airport	Total
MSP	12012
Airlake	1
Anoka	102
Crystal	1
Flying Cloud	341
Lake Elmo	9
St. Paul	9
Misc.	121
<b>Total</b>	<b>12596</b>

Note: Shaded Columns represent MSP complaints filed via the Internet.  
Sum of % Total of Complaints may not equal 100% due to rounding.  
\*As of May 2005, the MSP Complaints by City report includes multiple complaint descriptors per individual complaint. Therefore, the number of complaint descriptors may be more than the number of reported complaints.

# MSP International Airport Aviation Noise Complaints for February 2017

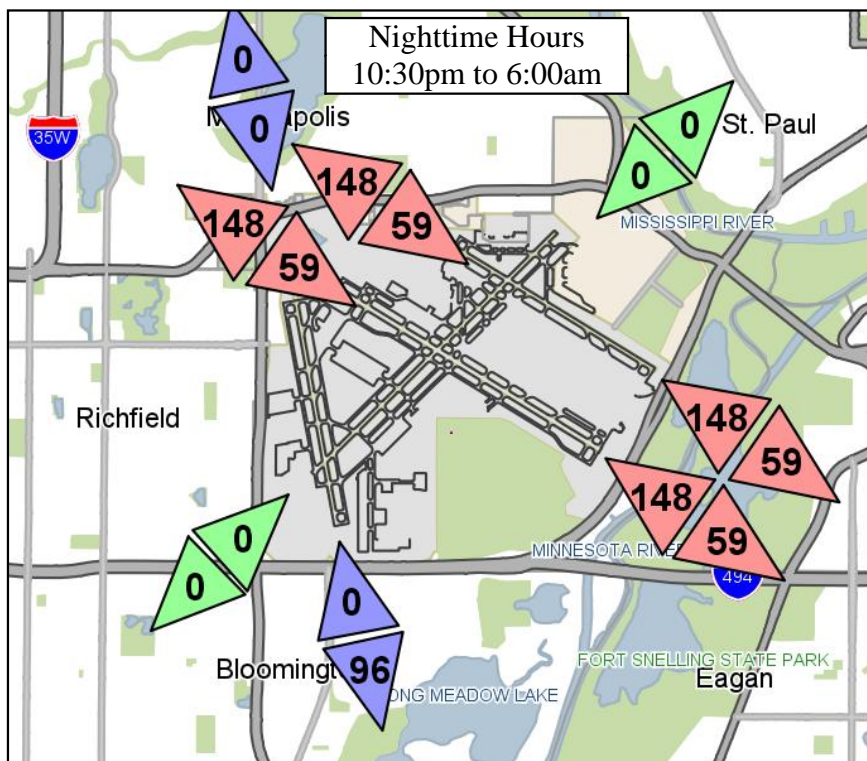
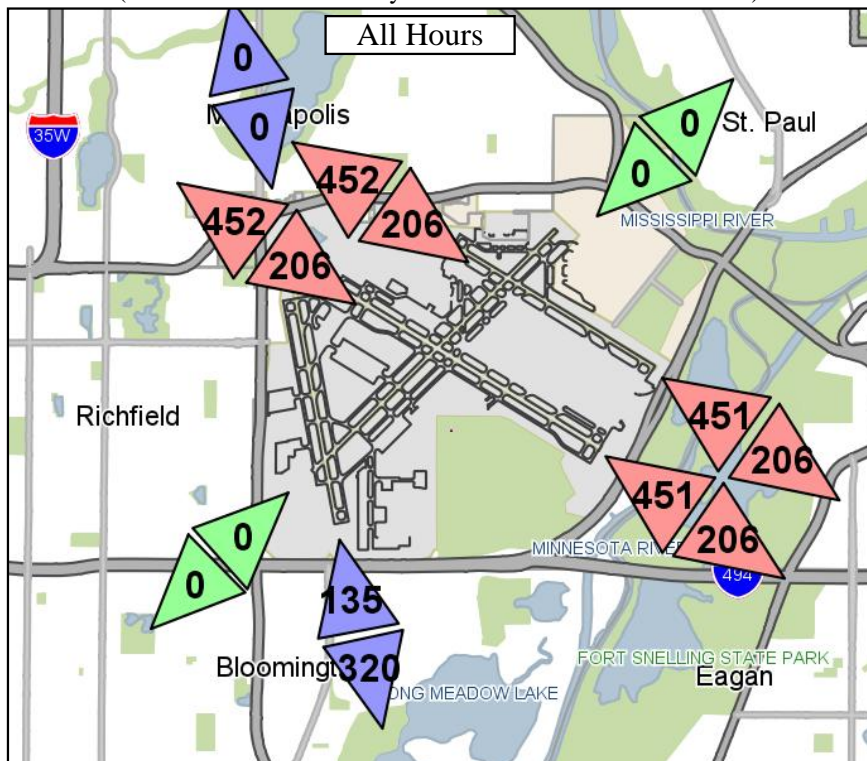


Complainant locations not shown on map: 1 from SHOREWOOD (7 complaints), 1 from ORONO (2 complaints), 1 from COTTAGE GROVE (55 complaints), 1 from EDEN PRAIRIE (49 complaints), 1 from FRIDLEY (1 complaints), 1 from MOUNDS VIEW (17 complaints)

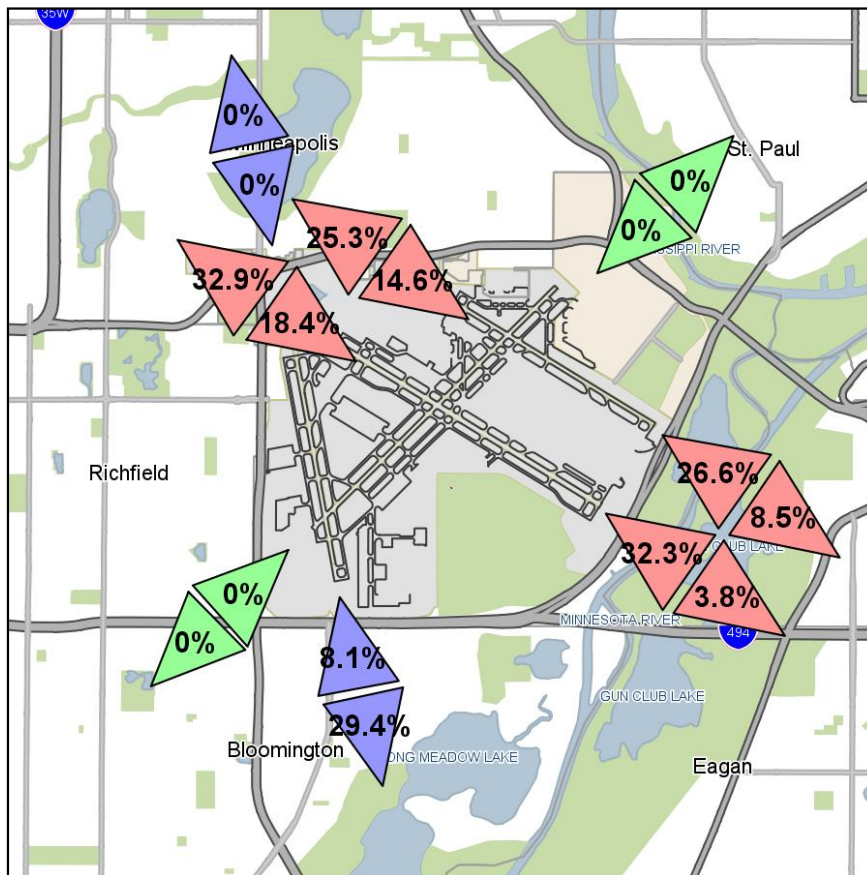
# Available Hours for Runway Use

February 2017

(Source: FAA Aviation Systems Performance Metrics Data)



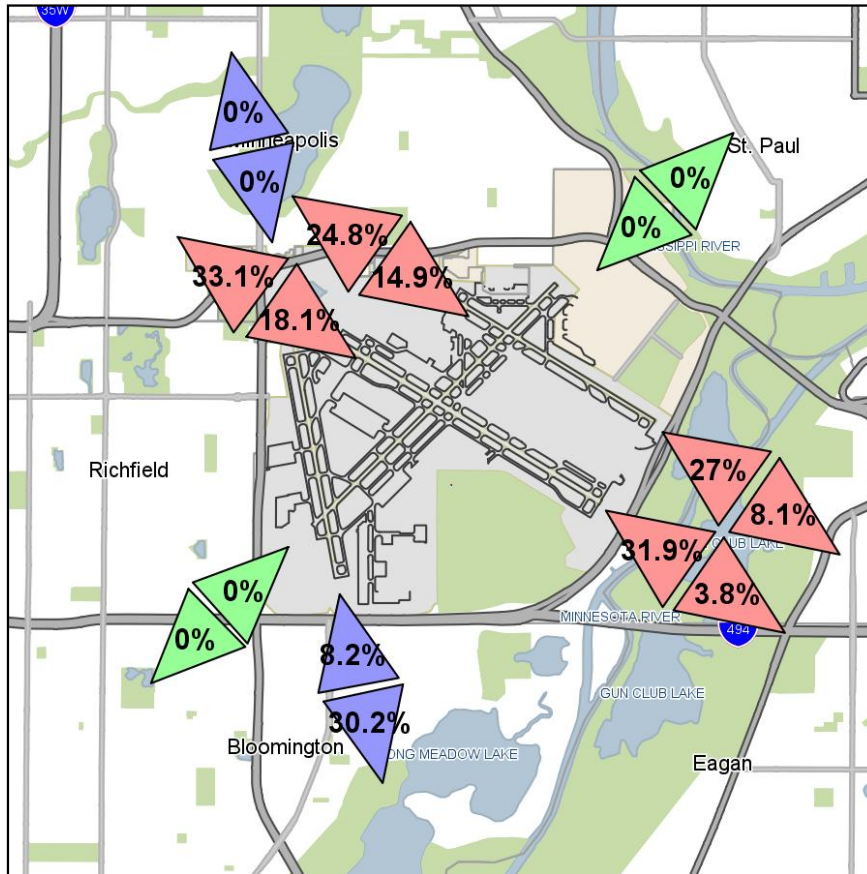
# All Operations Runway Use Report February 2017



RWY	Arrival/ Departure	Overflight Area	Count Operations	Percent	Last Year Count	Last Year Percent
04	Arr	So. Richfield/Bloomington	1	0%	1	0%
12L	Arr	So. Minneapolis/No. Richfield	2180	14.6%	2314	15.4%
12R	Arr	So. Minneapolis/No. Richfield	2751	18.4%	2719	18.1%
17	Arr	So. Minneapolis	0	0%	0	0%
22	Arr	St. Paul/Highland Park	0	0%	0	0%
30L	Arr	Eagan/Mendota Heights	4815	32.3%	4006	26.7%
30R	Arr	Eagan/Mendota Heights	3966	26.6%	3739	24.9%
35	Arr	Bloomington/Eagan	1208	8.1%	2242	14.9%
<b>Total Arrivals</b>			<b>14921</b>		<b>15021</b>	
RWY	Arrival/ Departure	Overflight Area	Count Operations	Percent	Last Year Count	Last Year Percent
04	Dep	St. Paul/Highland Park	1	0%	115	0.8%
12L	Dep	Eagan/Mendota Heights	1267	8.5%	1412	9.4%
12R	Dep	Eagan/Mendota Heights	567	3.8%	832	5.5%
17	Dep	Bloomington/Eagan	4387	29.4%	3507	23.4%
22	Dep	So. Richfield/Bloomington	3	0%	3	0%
30L	Dep	So. Minneapolis/No. Richfield	4909	32.9%	5268	35.1%
30R	Dep	So. Minneapolis/No. Richfield	3770	25.3%	3844	25.6%
35	Dep	So. Minneapolis	0	0%	18	0.1%
<b>Total Departures</b>			<b>14904</b>		<b>14999</b>	
<b>Total Operations</b>			<b>29825</b>		<b>30020</b>	

Sum of RUS % may not equal 100% due to rounding.

# Carrier Jet Operations Runway Use Report February 2017



RWY	Arrival/ Departure	Overflight Area	Count Operations	Percent	Last Year Count	Last Year Percent
04	Arr	So. Richfield/Bloomington	1	0%	1	0%
12L	Arr	So. Minneapolis/No. Richfield	2029	14.9%	2207	15.9%
12R	Arr	So. Minneapolis/No. Richfield	2470	18.1%	2497	18%
17	Arr	So. Minneapolis	0	0%	0	0%
22	Arr	St. Paul/Highland Park	0	0%	0	0%
30L	Arr	Eagan/Mendota Heights	4352	31.9%	3633	26.2%
30R	Arr	Eagan/Mendota Heights	3689	27%	3522	25.4%
35	Arr	Bloomington/Eagan	1116	8.2%	2024	14.6%
<b>Total Arrivals</b>			<b>13657</b>		<b>13884</b>	
RWY	Arrival/ Departure	Overflight Area	Count Operations	Percent	Last Year Count	Last Year Percent
04	Dep	St. Paul/Highland Park	0	0%	109	0.8%
12L	Dep	Eagan/Mendota Heights	1103	8.1%	1251	9%
12R	Dep	Eagan/Mendota Heights	522	3.8%	763	5.5%
17	Dep	Bloomington/Eagan	4124	30.2%	3309	23.8%
22	Dep	So. Richfield/Bloomington	0	0%	1	0%
30L	Dep	So. Minneapolis/No. Richfield	4516	33.1%	4897	35.3%
30R	Dep	So. Minneapolis/No. Richfield	3383	24.8%	3533	25.5%
35	Dep	So. Minneapolis	0	0%	15	0.1%
<b>Total Departures</b>			<b>13648</b>		<b>13878</b>	
<b>Total Operations</b>			<b>27305</b>		<b>27762</b>	

Sum of RUS % may not equal 100% due to rounding.

## February 2017 MSP Carrier Jet Fleet Composition

Type	FAR Part 36 Take-Off Noise Level <sup>1</sup>	Aircraft Description	Stage	Count	Percent
DC10	101.8	McDonnell Douglas DC10	3	26	0.1%
B744	101.6	Boeing 747-400	3	2	0%
B72Q	97.6	Boeing 727 Modified Stage 3	3	2	0%
B777	96.2	Boeing 777	3	60	0.2%
B763	95.7	Boeing 767-300	3	272	1%
A330	95.6	Airbus Industries A330	3	294	1.1%
MD11	92.8	McDonnell Douglas MD11	3	192	0.7%
B762	92.1	Boeing 767-200	3	45	0.2%
MD80	91.5	McDonnell Douglas MD80	3	511	1.9%
B757	91.4	Boeing 757-200	3	1453	5.3%
B764	91.2	Boeing 767-400	3	3	0%
A321	89.8	Airbus Industries A321	3	181	0.7%
B734	88.9	Boeing 737-400	3	16	0.1%
B738	88.6	Boeing 737-800	3	2932	10.7%
B739	88.4	Boeing 737-900	3	1174	4.3%
A320	87.8	Airbus Industries A320	3	2414	8.8%
B733	87.5	Boeing 737-300	3	188	0.7%
A319	87.4	Airbus Industries A319	3	1608	5.9%
E190	86.9	Embraer 190	3	134	0.5%
B7377	85.9	Boeing 737-700	3	1310	4.8%
CRJ9	84.6	Canadair Regional Jet CRJ-900	3	3700	13.6%
E170	84.6	Embraer 170	3	2295	8.4%
MD90	84.2	McDonnell Douglas MD90	3	2063	7.6%
B717	84.1	Boeing 717	3	1160	4.2%
E145	83.7	Embraer 145	3	42	0.2%
CRJ7	83.2	Canadair Regional Jet CRJ-700	3	693	2.5%
CRJ1	79.8	Canadair Regional Jet CRJ-100	3	38	0.1%
CRJ	79.8	Canadair Regional Jet CRJ	3	1	0%
CRJ2	78.7	Canadair Regional Jet CRJ-200	3	4480	16.4%
E135	77.9	Embraer 135	3	10	0%
J328	76.5	Fairchild Dornier 328	3	6	0%
<b>Totals</b>				<b>27305</b>	

Sum of fleet mix % may not equal 100% due to rounding.

	Count	Current Percent	Last Year Percent <sup>2</sup>
Stage 2	0	0%	0%
Stage 3	2	0%	0%
Stage 3 Manufactured	27303	100%	100%
<b>Total Stage 3</b>	<b>27305</b>		

NOTE 1: Stage 3 represent aircraft modified to meet all Stage 3 criteria as outlined in Federal Aviation Regulation (FAR) Part 36. This includes hushkit engines, engine retrofits or aircraft operational flight configurations.

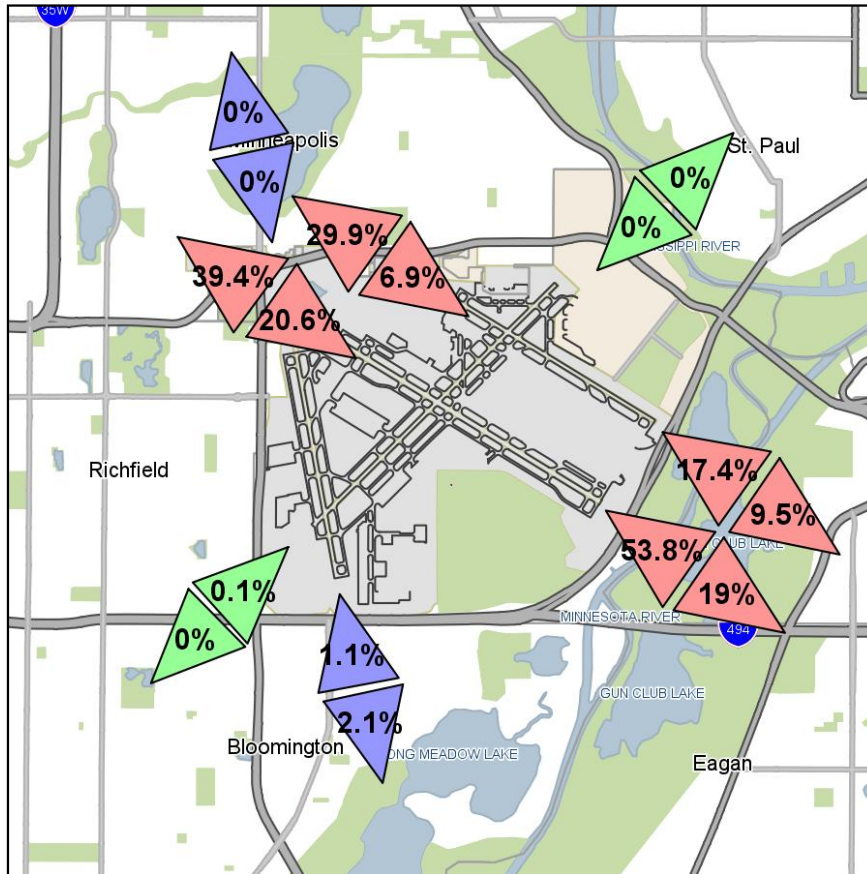
-The Provided Noise levels from FAR Part 36 are the loudest levels documented for the representative aircraft type during take-off measured in EPNL dBA (Effective Perceived Noise Level).

-EPNL is the level of the time integral of the antilogarithm of one-tenth of tone-corrected perceived noise level of an aircraft flyover measured in A-weighted decibels.

NOTE 2: Due to flight tracking data enhancements, the air carrier operations counts for Last Year included in this report have been updated to reflect revised aircraft type counts. Please refer to the interactive reports at [www.macnoise.com](http://www.macnoise.com) for detailed information regarding aircraft types.



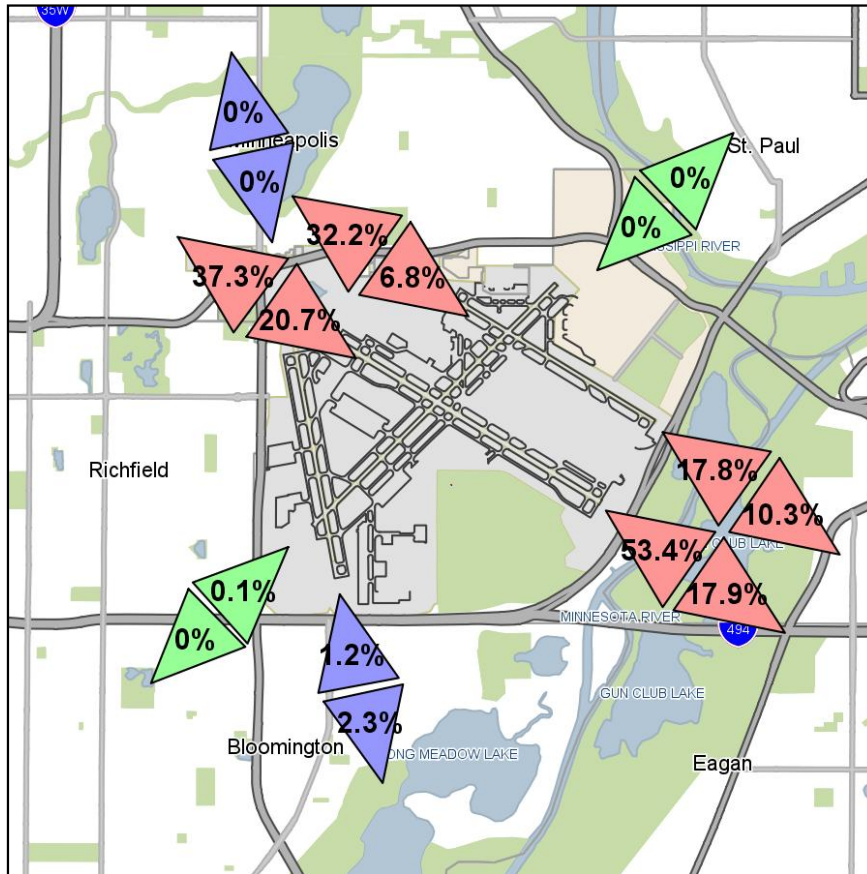
# Nighttime All Operations 10:30 p.m. to 6:00 a.m. Runway Use Report February 2017



RWY	Arrival/ Departure	Overflight Area	Count Operations	Percent	Last Year Count	Last Year Percent
04	Arr	So. Richfield/Bloomington	1	0.1%	0	0%
12L	Arr	So. Minneapolis/No. Richfield	87	6.9%	130	10.1%
12R	Arr	So. Minneapolis/No. Richfield	260	20.6%	294	22.9%
17	Arr	So. Minneapolis	0	0%	0	0%
22	Arr	St. Paul/Highland Park	0	0%	0	0%
30L	Arr	Eagan/Mendota Heights	679	53.8%	634	49.3%
30R	Arr	Eagan/Mendota Heights	220	17.4%	165	12.8%
35	Arr	Bloomington/Eagan	14	1.1%	62	4.8%
<b>Total Arrivals</b>			<b>1261</b>		<b>1285</b>	
RWY	Arrival/ Departure	Overflight Area	Count Operations	Percent	Last Year Count	Last Year Percent
04	Dep	St. Paul/Highland Park	0	0%	31	6%
12L	Dep	Eagan/Mendota Heights	36	9.5%	58	11.2%
12R	Dep	Eagan/Mendota Heights	72	19%	105	20.2%
17	Dep	Bloomington/Eagan	8	2.1%	60	11.6%
22	Dep	So. Richfield/Bloomington	0	0%	0	0%
30L	Dep	So. Minneapolis/No. Richfield	149	39.4%	171	32.9%
30R	Dep	So. Minneapolis/No. Richfield	113	29.9%	91	17.5%
35	Dep	So. Minneapolis	0	0%	3	0.6%
<b>Total Departures</b>			<b>378</b>		<b>519</b>	
<b>Total Operations</b>			<b>1639</b>		<b>1804</b>	

Sum of RUS % may not equal 100% due to rounding.

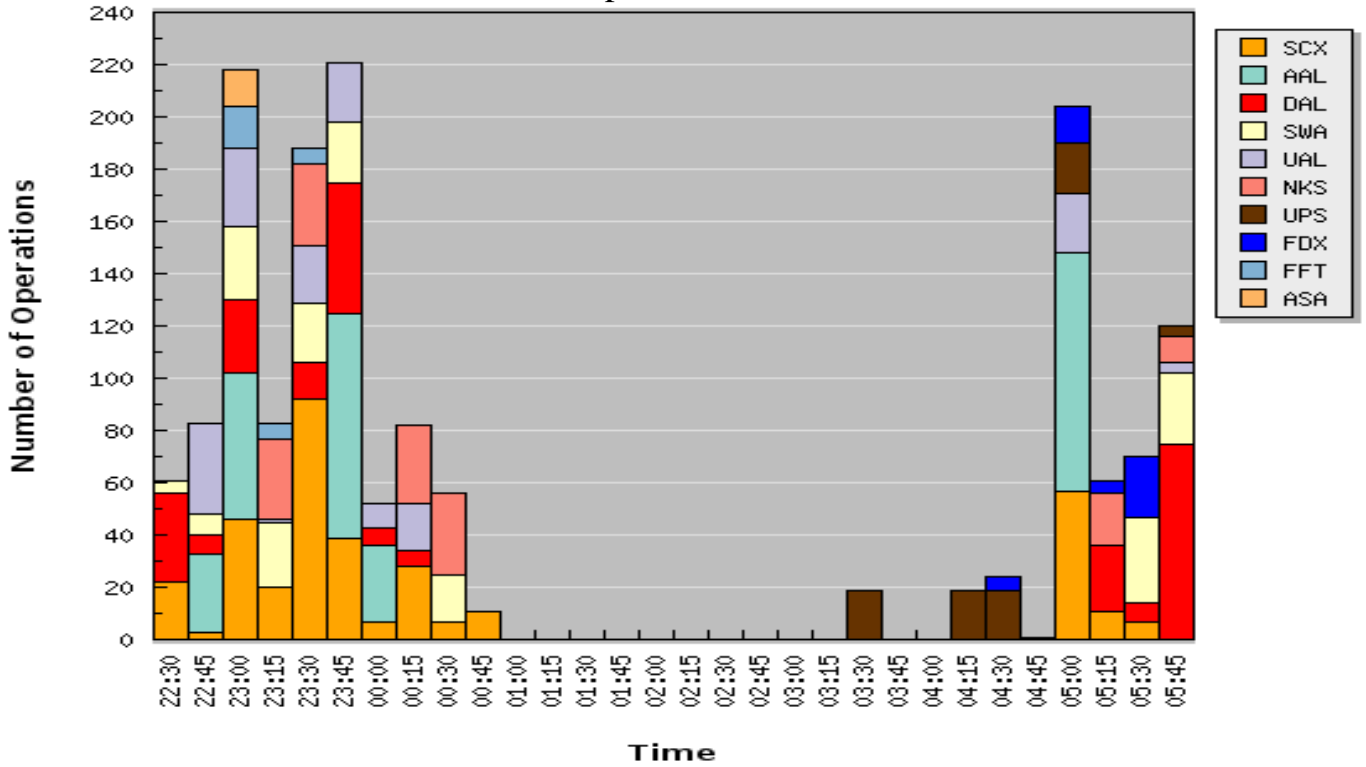
# Nighttime Carrier Jet Operations 10:30 p.m. to 6:00 a.m. Runway Use Report February 2017



RWY	Arrival/ Departure	Overflight Area	Count Operations	Percent	Last Year Count	Last Year Percent
04	Arr	So. Richfield/Bloomington	1	0.1%	0	0%
12L	Arr	So. Minneapolis/No. Richfield	82	6.8%	127	10.4%
12R	Arr	So. Minneapolis/No. Richfield	249	20.7%	283	23.1%
17	Arr	So. Minneapolis	0	0%	0	0%
22	Arr	St. Paul/Highland Park	0	0%	0	0%
30L	Arr	Eagan/Mendota Heights	642	53.4%	599	48.9%
30R	Arr	Eagan/Mendota Heights	214	17.8%	159	13%
35	Arr	Bloomington/Eagan	14	1.2%	58	4.7%
<b>Total Arrivals</b>			<b>1202</b>		<b>1226</b>	
RWY	Arrival/ Departure	Overflight Area	Count Operations	Percent	Last Year Count	Last Year Percent
04	Dep	St. Paul/Highland Park	0	0%	30	6.1%
12L	Dep	Eagan/Mendota Heights	36	10.3%	55	11.3%
12R	Dep	Eagan/Mendota Heights	63	17.9%	95	19.5%
17	Dep	Bloomington/Eagan	8	2.3%	56	11.5%
22	Dep	So. Richfield/Bloomington	0	0%	0	0%
30L	Dep	So. Minneapolis/No. Richfield	131	37.3%	159	32.6%
30R	Dep	So. Minneapolis/No. Richfield	113	32.2%	91	18.6%
35	Dep	So. Minneapolis	0	0%	2	0.4%
<b>Total Departures</b>			<b>351</b>		<b>488</b>	
<b>Total Operations</b>			<b>1553</b>		<b>1714</b>	

Sum of RUS % may not equal 100% due to rounding.

**March 2017 Nighttime Scheduled Carrier Jet Operations  
10:30 p.m. to 6:00 a.m.**



**March 2017 Nighttime Scheduled Carrier Jet Operations  
10:30 p.m. to 6:00 a.m.**

<b>Airline</b>	<b>Stage 2</b>	<b>Stage 3</b>	<b>Manufactured Stage 3</b>	<b>Total</b>
Sun Country (SCX)	0	0	350	350
American (AAL)	0	0	292	292
Delta (DAL)	0	0	253	253
Southwest (SWA)	0	0	190	190
United (UAL)	0	0	165	165
Spirit (NKS)	0	0	153	153
UPS (UPS)	0	0	80	80
Fedex (FDX)	0	0	47	47
Frontier Airlines (FFT)	0	0	28	28
Alaska (ASA)	0	0	15	15
<b>Total</b>	<b>0</b>	<b>0</b>	<b>1573</b>	<b>1573</b>

## March 2017 Nighttime Scheduled Carrier Jet Operations

Time	A/D	Carrier	Flight Number	Equipment	Stage 3	Days of Operation	Routing
22:30	A	Sun Country	346	B738	M	MTWThF	MCO MSP
22:30	A	Sun Country	346	B737	M	W	MCO MSP
22:30	D	Delta	5786	E175	M	MWThFSu	MSP DLH
22:35	A	Southwest	1780	738	M	MTWThF	FLL ATL MSP
22:41	A	Delta	702	A320	M	MTWThFSSu	CUN MSP
22:43	A	Delta	702	A320	M	MTWThFSSu	CUN MSP
22:45	A	United	627	A320	M	MTWThSSu	ORD MSP
22:50	A	Southwest	3101	B737	M	MTWThF	PDX DEN MSP
22:51	A	American	239	B738	M	MTWThFSSu	DFW MSP
22:52	A	United	627	A320	M	W	DCA ORD MSP
22:53	A	United	627	B737	M	MTh	DCA ORD MSP
22:53	A	United	627	B739	M	F	DCA ORD MSP
22:54	A	Delta	1537	A320	M	S	PHX MSP
22:55	A	Sun Country	732	B737	M	S	SXM MSP
22:55	A	Delta	1537	A320	M	Th	PHX MSP
22:55	A	Southwest	6522	738	M	S	SJC PHX MSP
22:55	A	United	302	B739	M	MWThSu	IAH MSP
22:57	A	Delta	1537	A320	M	MFSu	PHX MSP
22:58	A	Delta	505	B757	M	S	SXM MSP
22:59	A	United	302	B739	M	TS	IAH MSP
22:59	A	United	669	A320	M	Th	SMF DEN MSP
22:59	A	United	302	B738	M	MTWThFSu	IAH MSP
23:00	A	United	5593	E170	M	MTWThFS	LAX MSP
23:00	A	Southwest	1385	B737	M	MTWThF	DTW STL MSP
23:02	A	Frontier Airlines	332	A320	M	MTWThFSSu	DEN MSP
23:02	A	United	302	A319	M	T	IAH MSP
23:04	A	American	1083	B738	M	MTWThFSSu	MIA MSP
23:04	A	Delta	356	B753	M	MTThFSu	LIR ATL MSP
23:05	A	Sun Country	404	B737	M	MTWF	SAN MSP
23:06	A	United	669	A320	M	W	SMF DEN MSP
23:07	A	United	669	A320	M	F	SMF DEN MSP
23:09	A	Delta	2060	B739	M	MThFSu	LAS MSP
23:09	A	Sun Country	254	B737	M	ThSu	BOS MSP
23:10	A	Southwest	379	B737	M	MTWThF	LAS DEN MSP
23:10	A	Southwest	846	B737	M	S	MCO MSP
23:10	A	American	2355	B738	M	MTWThFSu	ORD MSP
23:10	A	Southwest	6026	B737	M	Su	HOU DEN MSP
23:10	A	Delta	356	B739	M	Su	LIR ATL MSP
23:10	A	Delta	2331	B739	M	F	ATL MSP
23:11	A	Sun Country	248	B737	M	ThSu	JFK MSP
23:12	A	United	669	A320	M	M	SMF DEN MSP
23:12	A	Alaska	28	738	M	MTW	SEA MSP
23:12	A	Alaska	28	B737	M	MTWThSSu	SEA MSP
23:13	A	Frontier Airlines	332	A320	M	WThF	DEN MSP
23:13	A	United	669	B738	M	S	SMF DEN MSP
23:13	A	United	669	B739	M	MTWThFSSu	SMF DEN MSP
23:13	A	Sun Country	396	B737	M	MTWF	SFO MSP
23:14	A	United	669	A320	M	Su	SMF DEN MSP
23:15	A	Spirit	170	A320	M	MTWThFSSu	LAS MSP
23:15	D	Sun Country	781	B738	M	MSu	MSP SJU

## March 2017 Nighttime Scheduled Carrier Jet Operations

Time	A/D	Carrier	Flight Number	Equipment	Stage 3	Days of Operation	Routing
23:15	A	Southwest	3248	738	M	Su	STL MSP
23:15	A	Southwest	4467	B737	M	MTWThF	MCO STL MSP
23:17	A	Frontier Airlines	332	A320	M	MTWThFSu	DEN MSP
23:20	A	United	627	A320	M	S	ORD MSP
23:20	A	Southwest	4139	738	M	MTWThF	MDW MSP
23:27	A	Sun Country	106	B738	M	F	LAS MSP
23:27	A	Sun Country	370	B737	M	F	TPA MSP
23:27	A	Sun Country	370	B738	M	MWThFSu	TPA MSP
23:30	A	Southwest	5135	B737	M	S	ATL MSP
23:32	A	Sun Country	106	B737	M	F	LAS MSP
23:32	A	Sun Country	608	B738	M	MTWThFSSu	PHX MSP
23:32	A	Sun Country	608	B737	M	MW	PHX MSP
23:33	A	United	5593	E170	M	Su	LAX MSP
23:34	A	United	669	A320	M	T	SMF DEN MSP
23:35	A	Sun Country	582	B738	M	S	CUN MSP
23:37	A	Sun Country	388	B738	M	MTWThFSSu	RSW MSP
23:39	A	Delta	1371	B739	M	Su	LAX MSP
23:40	A	Southwest	2678	B737	M	S	RSW MSP
23:40	A	Southwest	1725	B737	M	MTWThF	BWI MDW MSP
23:42	A	Sun Country	236	B738	M	Su	DCA MSP
23:42	A	Sun Country	426	B738	M	MTW	LAX MSP
23:42	A	Sun Country	426	B737	M	M	LAX MSP
23:42	A	Sun Country	236	B737	M	MTWThFSu	DCA MSP
23:42	A	Spirit	428	A320	M	MTWThFSSu	TPA MSP
23:44	A	Delta	1371	B739	M	MTWThF	LAX MSP
23:44	A	Frontier Airlines	332	A320	M	MTWThFSu	DEN MSP
23:44	A	United	5593	E170	M	MTWThFS	LAX MSP
23:45	A	Southwest	4863	B737	M	MTWThF	LAS ATL MSP
23:45	A	Sun Country	346	B738	M	S	MCO MSP
23:50	A	Southwest	2878	B737	M	Su	MDW MSP
23:50	A	Sun Country	548	B738	M	F	SJD MSP
23:52	A	Sun Country	426	B737	M	W	LAX MSP
23:53	A	American	4636	E175	M	MTWThFSu	DCA MSP
23:53	A	Delta	1558	B739	M	S	SLC MSP
23:55	A	Southwest	6072	738	M	Su	ATL MSP
23:55	A	Delta	1537	B739	M	Th	PHX MSP
23:55	A	Delta	1558	B757	M	MTWThSu	SLC MSP
23:55	A	Delta	1558	B739	M	MTWThFSu	SLC MSP
23:56	A	Delta	356	B739	M	S	LIR ATL MSP
23:56	A	Delta	356	B757	M	S	LIR ATL MSP
23:56	A	Delta	1537	B739	M	MTWThFSu	PHX MSP
23:57	A	American	2039	A319	M	S	LGA CLT MSP
23:57	A	American	2039	A320	M	MTWThFSu	FLL CLT MSP
23:57	A	American	1744	A321	M	MTWThFSSu	LAS PHX MSP
23:57	A	American	2039	A320	M	WTh	PBI CLT MSP
23:58	A	Sun Country	618	B737	M	S	PSP MSP
23:58	A	Sun Country	618	B738	M	MTWThFSu	PSP MSP
23:58	A	United	6324	CRJ	M	MTWThFSu	IAD MSP
23:58	A	Delta	1130	B757	M	MThFSu	ATL MSP
23:58	A	Delta	356	B753	M	W	LIR ATL MSP

## March 2017 Nighttime Scheduled Carrier Jet Operations

Time	A/D	Carrier	Flight Number	Equipment	Stage 3	Days of Operation	Routing
23:59	A	United	5593	E170	M	Su	LAX MSP
23:59	A	United	5315	E170	M	MTWThFSu	SFO MSP
00:03	A	Delta	939	B739	M	Su	ATL MSP
00:07	A	United	69	B738	M	S	IAH MSP
00:09	A	American	1180	B738	M	MTWThFSSu	LAX MSP
00:10	A	Sun Country	540	B737	M	MSu	PVR MSP
00:10	A	United	2423	A320	M	S	ORD MSP
00:10	A	United	627	A320	M	ThF	ORD MSP
00:10	A	United	5397	E170	M	M	LAX MSP
00:11	A	Delta	939	B739	M	MTFS	ATL MSP
00:11	A	Delta	356	B739	M	WTh	LIR ATL MSP
00:12	A	Sun Country	428	B738	M	T	LAX MSP
00:15	A	United	5315	E170	M	MTWFS	SFO MSP
00:18	A	United	5315	E170	M	Th	SFO MSP
00:20	A	Sun Country	548	B738	M	MSu	SJD MSP
00:20	D	Spirit	597	A320	M	MTWThFSSu	MSP FLL
00:27	A	Sun Country	108	B738	M	MTWThFS	LAS MSP
00:27	A	Delta	2426	B739	M	TWThFS	SLC MSP
00:30	A	Southwest	1645	738	M	TWThFS	PDX PHX MSP
00:30	A	Sun Country	594	B738	M	SSu	MZT MSP
00:40	A	Southwest	6529	B737	M	M	SNA PHX MSP
00:44	A	Spirit	596	A320	M	MTWThFSSu	FLL MSP
00:50	A	Sun Country	544	B738	M	MSSu	CUN MSP
03:30	A	UPS	0554	B757	M	TWThF	
03:34	A	UPS	0554	B757	M	TWThF	
04:15	A	UPS	0556	B757	M	TWThF	
04:20	A	UPS	0556	B757	M	TWThF	
04:25	A	Fedex	8364	FA20		TWThF	
04:31	A	UPS	0558	B757	M	TWThF	
04:32	A	UPS	0558	B757	M	TWThF	
04:42	A	Fedex	1777	B757	M	F	
04:57	A	Alaska	906	B737	M	Su	SEA MSP
05:00	A	Sun Country	110	B738	M	MTWThFSSu	LAS MSP
05:00	A	American	1986	A321	M	MFSSu	SFO PHX MSP
05:00	A	American	727	A321	M	S	PHX MSP
05:00	D	United	1873	B738	M	T	MSP IAH
05:00	D	American	2340	B738	M	MTWThFS	MSP ORD
05:00	D	United	1873	B739	M	M	MSP IAH
05:00	D	United	1873	B737	M	WThF	MSP IAH
05:05	D	United	1873	B739	M	W	MSP IAH
05:07	A	Sun Country	610	B737	M	WTh	PHX MSP
05:07	A	Sun Country	610	B738	M	MTThFSSu	PHX MSP
05:07	D	United	6132	E170	M	Th	MSP IAH
05:07	A	UPS	0560	MD11	M	TWThF	
05:09	D	United	1873	B739	M	Su	MSP IAH
05:09	D	American	1756	A320	M	WTh	MSP CLT BDL
05:09	D	United	1873	A319	M	W	MSP IAH
05:09	D	American	1708	A319	M	Su	MSP CLT FLL
05:09	D	American	1910	A320	M	S	MSP CLT LGA
05:09	D	American	1897	A320	M	MTWThF	MSP CLT EWR

## March 2017 Nighttime Scheduled Carrier Jet Operations

Time	A/D	Carrier	Flight Number	Equipment	Stage 3	Days of Operation	Routing
05:09	D	United	1873	B738	M	MTWThFS	MSP IAH
05:10	D	American	1252	B738	M	MTWThFSSu	MSP MIA
05:10	A	UPS	0560	MD11	M	TWThF	
05:12	A	Fedex	1718	MD11	M	TWTh	
05:15	A	Fedex	1718	MD11	M	F	
05:18	A	Sun Country	430	B738	M	MS	LAX MSP
05:20	D	Delta	1991	B757	M	W	MSP ATL
05:20	A	Spirit	1612	A319	M	Su	LAS MSP
05:20	D	Delta	1991	A320	M	Th	MSP ATL
05:20	D	Delta	1991	B753	M	MTThFS	MSP ATL
05:20	D	Delta	1991	B739	M	MTWThFSu	MSP ATL
05:28	A	Sun Country	398	B738	M	M	SFO MSP
05:28	A	Spirit	612	A319	M	MTWThFSSu	LAS MSP ORD
05:30	A	Delta	1717	B763	M	MTWThF	PHX MSP
05:30	D	Southwest	1250	738	M	MTWThF	MSP PHX
05:30	D	Sun Country	563	B738	M	SSu	MSP CUN
05:36	A	Fedex	1407	MD11	M	TWThFS	
05:40	D	Southwest	1504	738	M	MTWThF	MSP STL DEN
05:40	A	Delta	1492	A333	M	Su	HNL MSP
05:44	A	Delta	1492	A333	M	F	HNL MSP
05:45	D	Southwest	251	B737	M	MTWThF	MSP MDW BNA
05:45	D	Southwest	475	B737	M	Th	MSP BWI
05:45	D	Southwest	3297	B737	M	MTWThF	MSP BWI ECP
05:46	A	Delta	1492	A333	M	MWThFS	HNL MSP
05:46	A	UPS	0496	B757	M	S	
05:47	A	Delta	1492	A333	M	MTWThFSSu	HNL MSP
05:48	A	Spirit	612	A319	M	MTWThFSSu	LAS MSP ORD
05:50	D	Southwest	1161	738	M	MTWThF	MSP STL MCO
05:50	A	UPS	0496	B757	M	S	
05:51	A	Delta	2440	738	M	ThF	SEA MSP
05:55	D	United	1864	B739	M	Th	MSP DEN
05:55	D	United	754	A320	M	MWF	MSP EWR
05:55	A	Delta	1450	B753	M	S	LAS MSP
05:57	A	Delta	1717	B763	M	S	PHX MSP
05:58	A	Delta	1450	B753	M	MTWThFSu	LAS MSP
05:59	A	Delta	2926	B717	M	S	FSD MSP
05:59	A	Delta	1717	B763	M	MTWThFSu	PHX MSP
05:59	A	Delta	2440	B739	M	S	SEA MSP

## February 2017 Top 15 Actual Nighttime Jet Operators by Type 10:30 p.m. to 6:00 a.m.

Total Nighttime Jet  
Operations by Hour

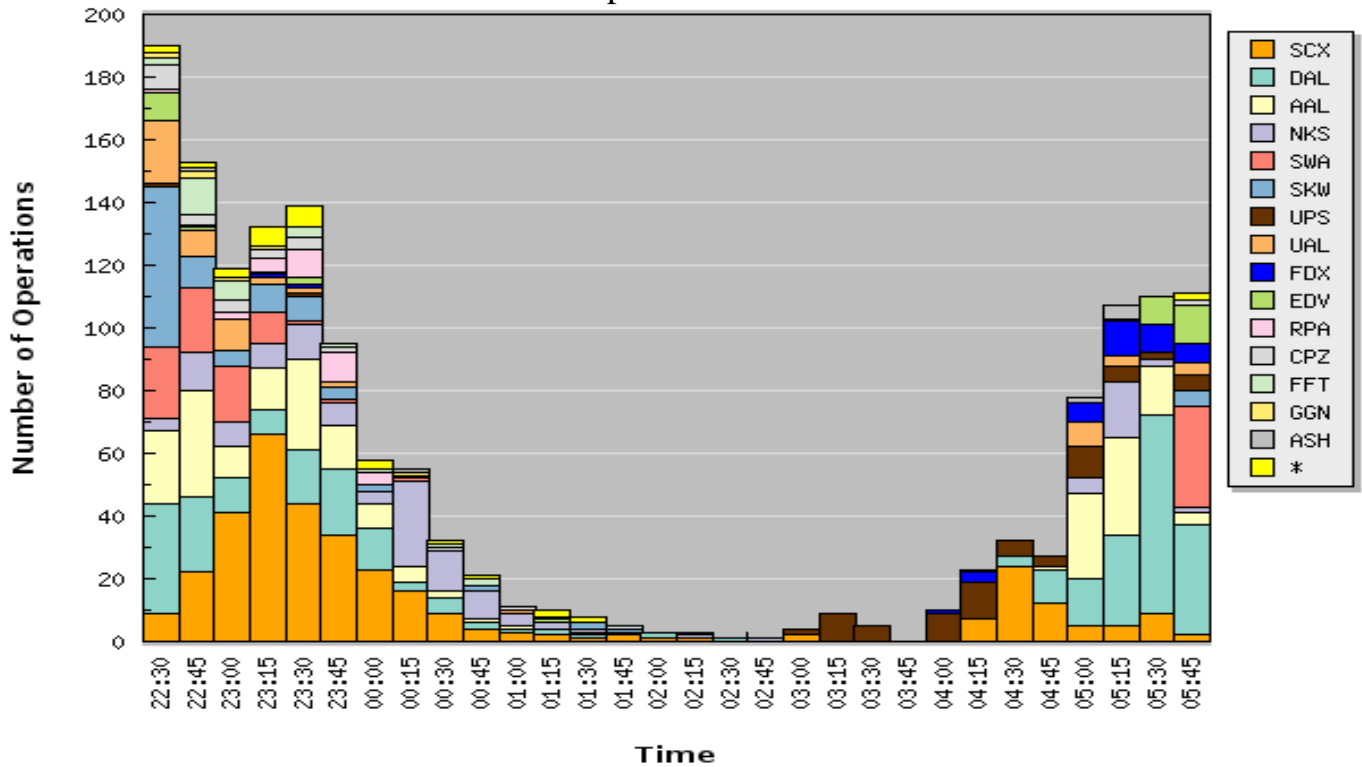
Hour	Count
2230	344
2300	485
2400	166
100	34
200	8
300	18
400	92
500	406
<b>TOTAL</b>	<b>1553</b>

Airline	ID	Stage	Type	Count
Air Alliance/Air Georgian (Canada)	GGN	3	CRJ1	2
Air Alliance/Air Georgian (Canada)	GGN	3	CRJ2	6
American	AAL	3	A319	4
American	AAL	3	A321	14
American	AAL	3	A320	47
American	AAL	3	B738	155
Compass	CPZ	3	E170	29
Delta	DAL	3	B744	1
Delta	DAL	3	B777	1
Delta	DAL	3	MD80	3
Delta	DAL	3	B763	10
Delta	DAL	3	A319	13
Delta	DAL	3	B717	17
Delta	DAL	3	B738	20
Delta	DAL	3	MD90	27
Delta	DAL	3	A330	28
Delta	DAL	3	A320	32
Delta	DAL	3	B739	75
Delta	DAL	3	B757	76
Endeavor Air	EDV	3	CRJ9	35
Fedex	FDX	3	B757	5
Fedex	FDX	3	DC10	5
Fedex	FDX	3	MD11	28
Frontier Airlines	FFT	3	A320	28
Mesa Airlines	ASH	3	E170	8
Republic Airlines	RPA	3	E170	31
Skywest Airlines	SKW	3	CRJ9	30
Skywest Airlines	SKW	3	CRJ2	32
Skywest Airlines	SKW	3	E170	38
Southwest	SWA	3	B733	2
Southwest	SWA	3	B738	43
Southwest	SWA	3	B7377	62
Spirit	NKS	3	A321	20
Spirit	NKS	3	A319	27
Spirit	NKS	3	A320	92
Sun Country	SCX	3	B7377	86
Sun Country	SCX	3	B738	258
United	UAL	3	B738	4
United	UAL	3	A319	7
United	UAL	3	B7377	10
United	UAL	3	B739	14
United	UAL	3	A320	26
UPS	UPS	3	MD11	16
UPS	UPS	3	B757	53
<b>TOTAL</b>				<b>1520</b>

Note: The top 15 nighttime operators represent 97.9% of the total nighttime carrier jet operations.



February 2017 Nighttime Carrier Jet Operations Mix for Top 15 Airlines  
10:30 p.m. to 6:00 a.m.



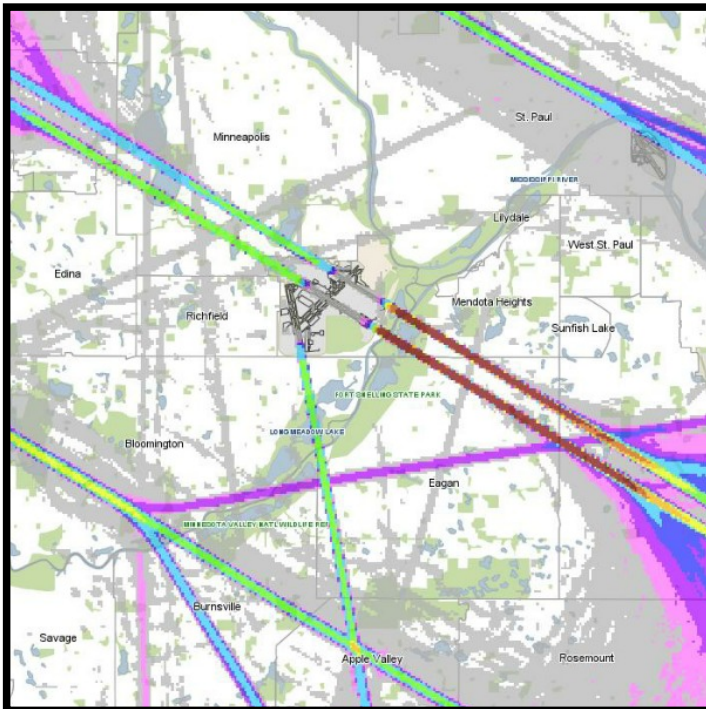
February 2017 Nighttime Carrier Jet Fleet Stage Mix for Top 15 Airlines  
10:30 p.m. to 6:00 a.m.

Airline	Stage 2	Stage 3	Manufactured Stage 3	Total
Sun Country (SCX)	0	0	344	344
Delta (DAL)	0	0	303	303
American (AAL)	0	0	220	220
Spirit (NKS)	0	0	139	139
Southwest (SWA)	0	0	107	107
Skywest Airlines (SKW)	0	0	100	100
UPS (UPS)	0	0	69	69
United (UAL)	0	0	61	61
Fedex (FDX)	0	0	38	38
Endeavor Air (EDV)	0	0	35	35
Republic Airlines (RPA)	0	0	31	31
Compass (CPZ)	0	0	29	29
Frontier Airlines (FFT)	0	0	28	28
Air Alliance/Air Georgian (Canada) (GGN)	0	0	8	8
Mesa Airlines (ASH)	0	0	8	8
Other	0	1	32	33
<b>Total</b>	<b>0</b>	<b>1</b>	<b>1552</b>	<b>1553</b>

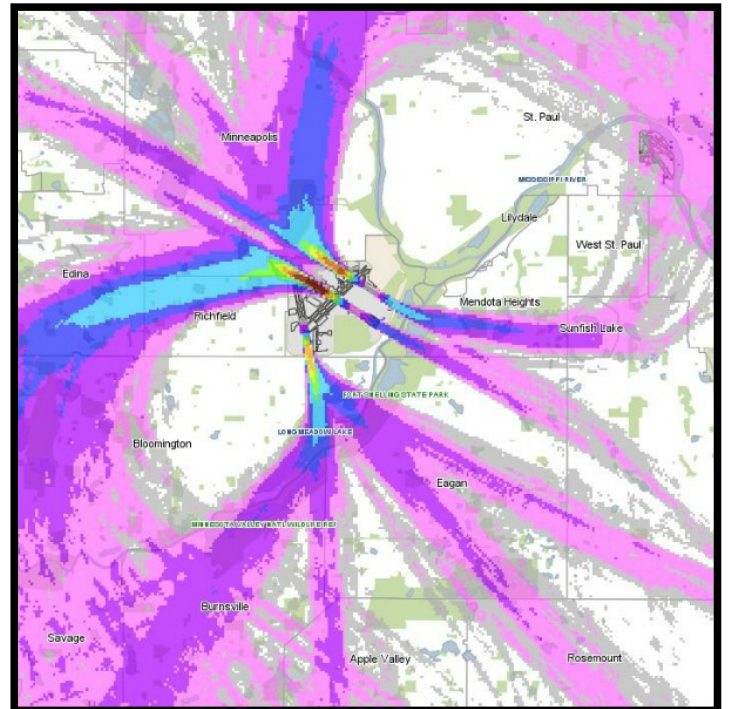
# Airport Noise and Operations Monitoring System Flight Tracks

## Carrier Jet Operations - February 2017

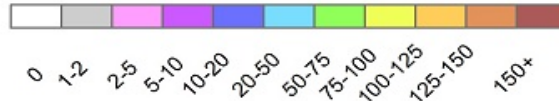
Feb 1 thru 8, 2017 - 3792 Carrier Jet Arrivals



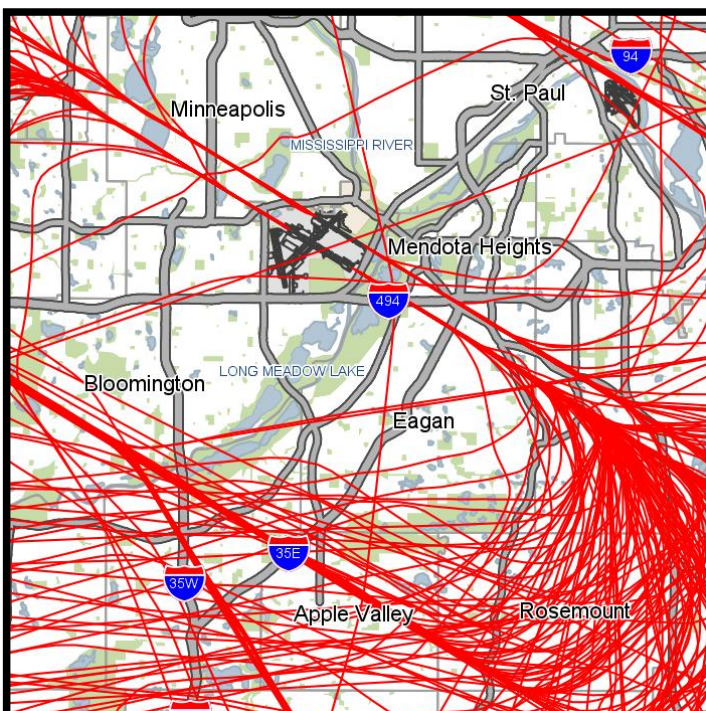
Feb 1 thru 8, 2017 - 3796 Carrier Jet Departures



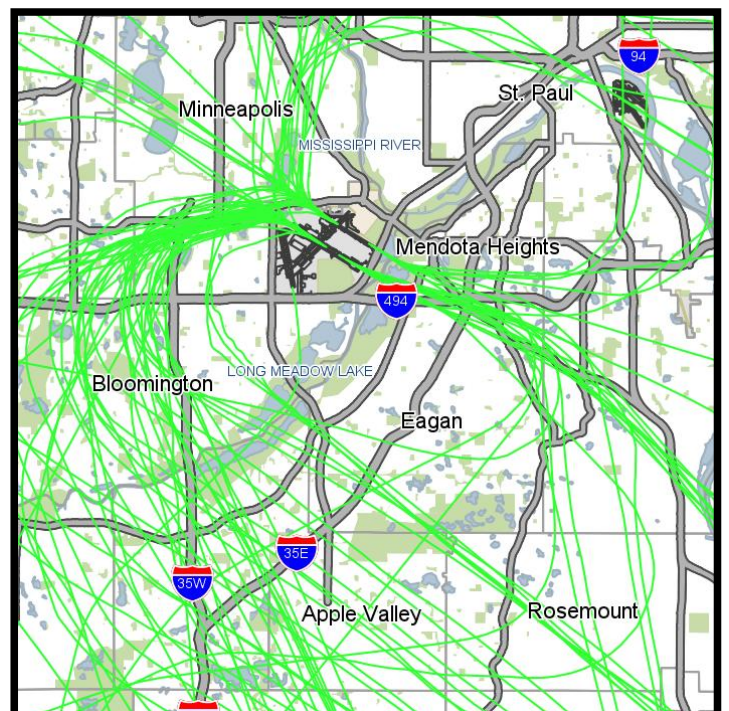
Average Daily Operations



Feb 1 thru 8, 2017 - 319 Nighttime\* Carrier Jet Arrivals



Feb 1 thru 8, 2017 - 88 Nighttime\* Carrier Jet Departures

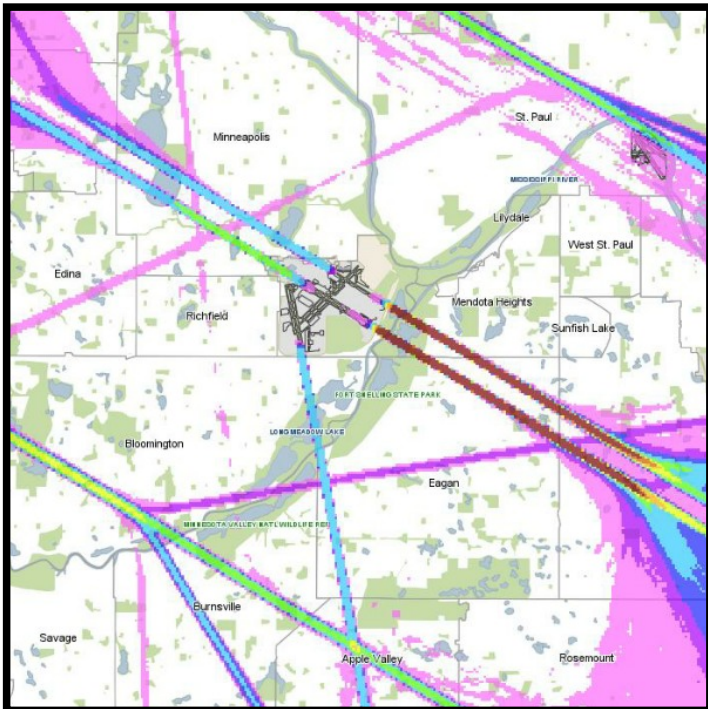


\*NOTE: Nighttime is 10:30 p.m. to 6:00 a.m.

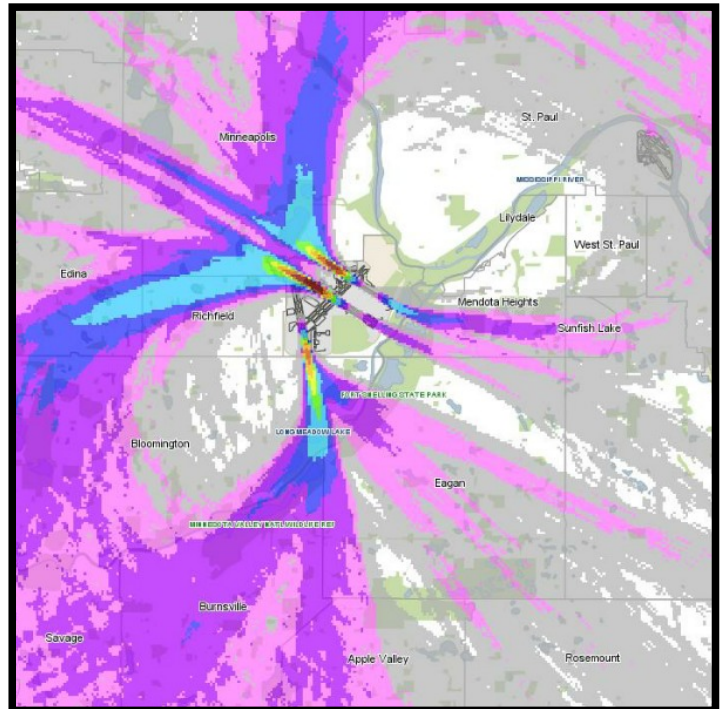
# Airport Noise and Operations Monitoring System Flight Tracks

## Carrier Jet Operations - February 2017

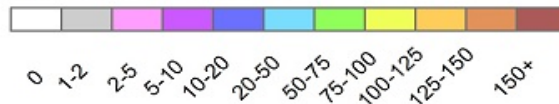
Feb 9 thru 16, 2017 - 3932 Carrier Jet Arrivals



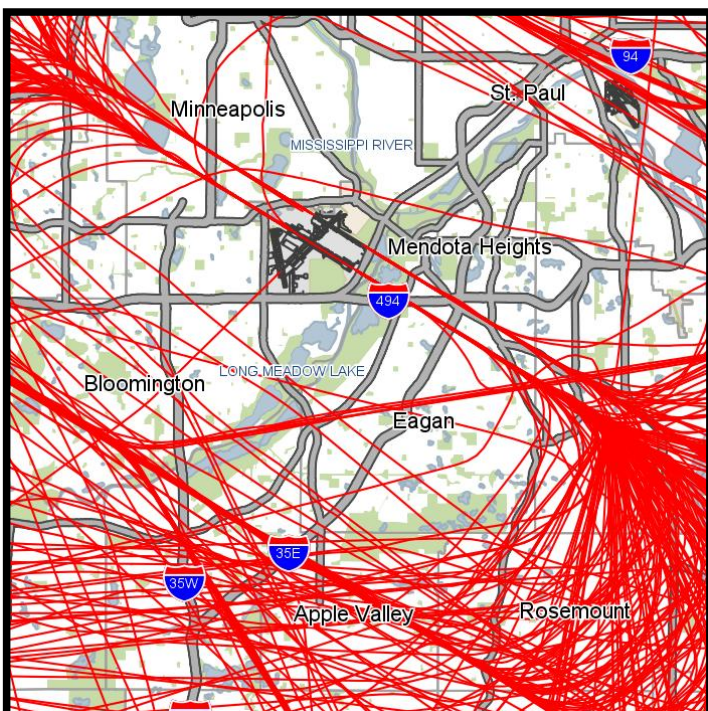
Feb 9 thru 16, 2017 - 3922 Carrier Jet Departures



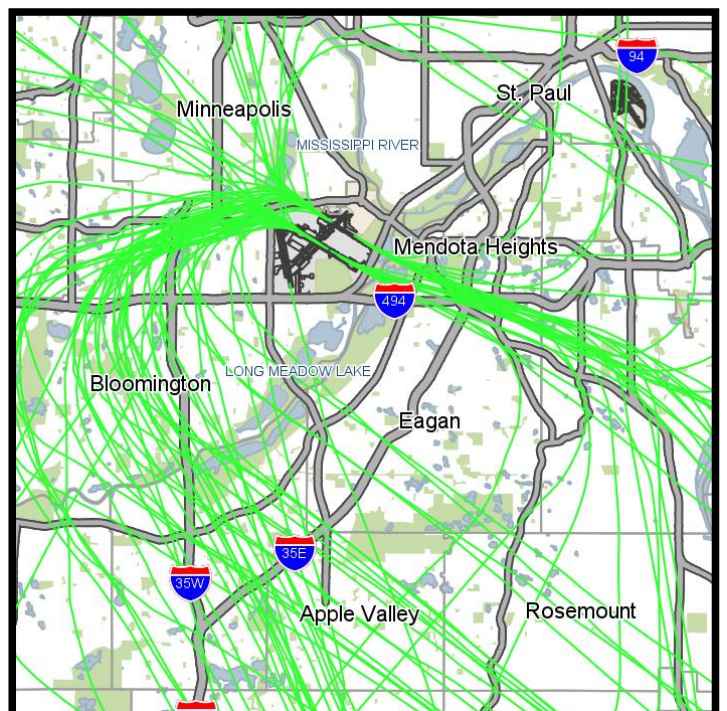
Average Daily Operations



Feb 9 thru 16, 2017 - 350 Nighttime\* Carrier Jet Arrivals



Feb 9 thru 16, 2017 - 98 Nighttime\* Carrier Jet Departures

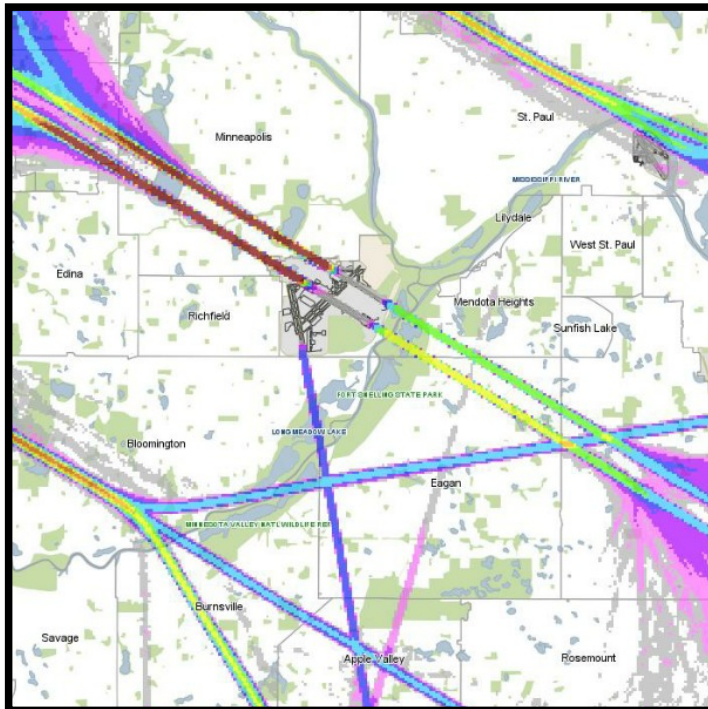


\*NOTE: Nighttime is 10:30 p.m. to 6:00 a.m.

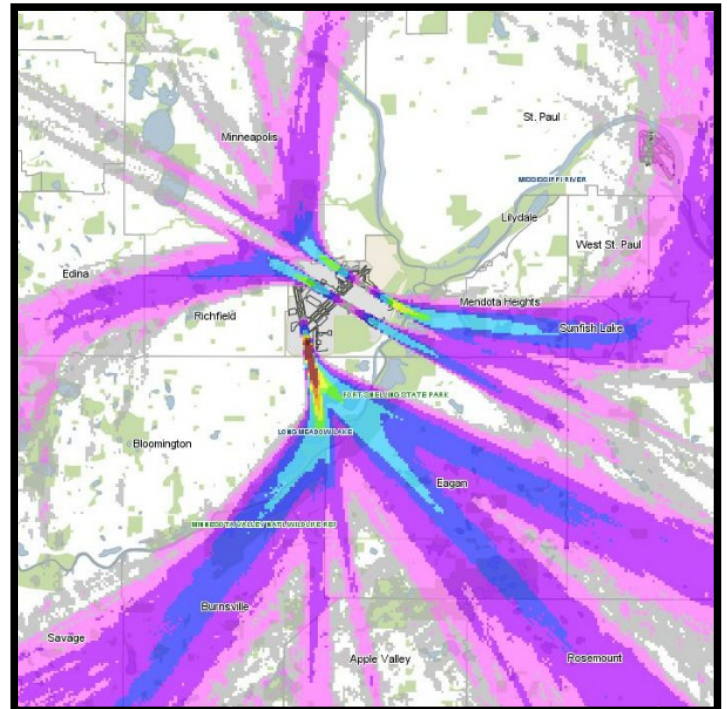
# Airport Noise and Operations Monitoring System Flight Tracks

## Carrier Jet Operations - February 2017

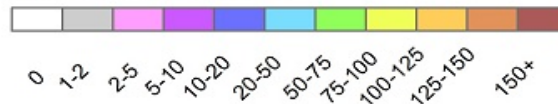
Feb 17 thru 24, 2017 - 3977 Carrier Jet Arrivals



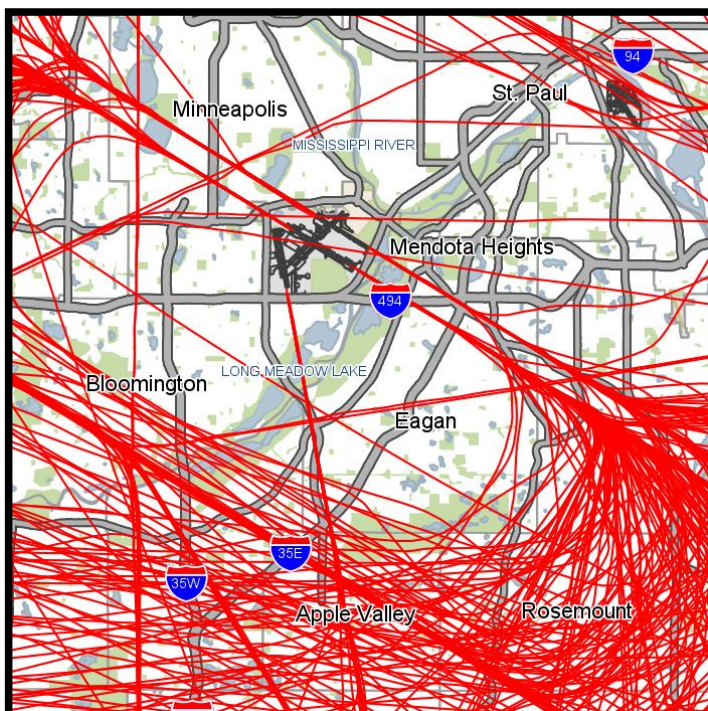
Feb 17 thru 24, 2017 - 3979 Carrier Jet Departures



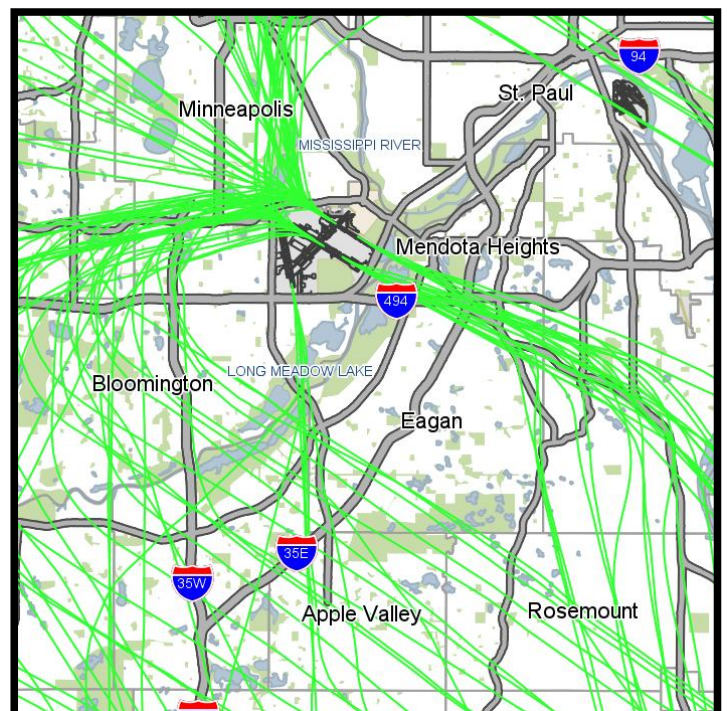
**Average Daily Operations**



Feb 17 thru 24, 2017 - 368 Nighttime\* Carrier Jet Arrivals



Feb 17 thru 24, 2017 - 105 Nighttime\* Carrier Jet Departures

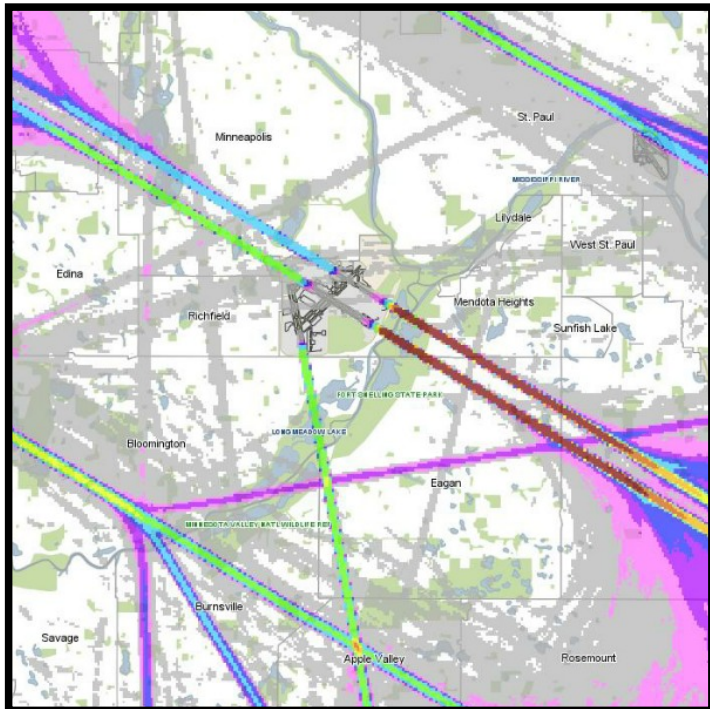


\*NOTE: Nighttime is 10:30 p.m. to 6:00 a.m.

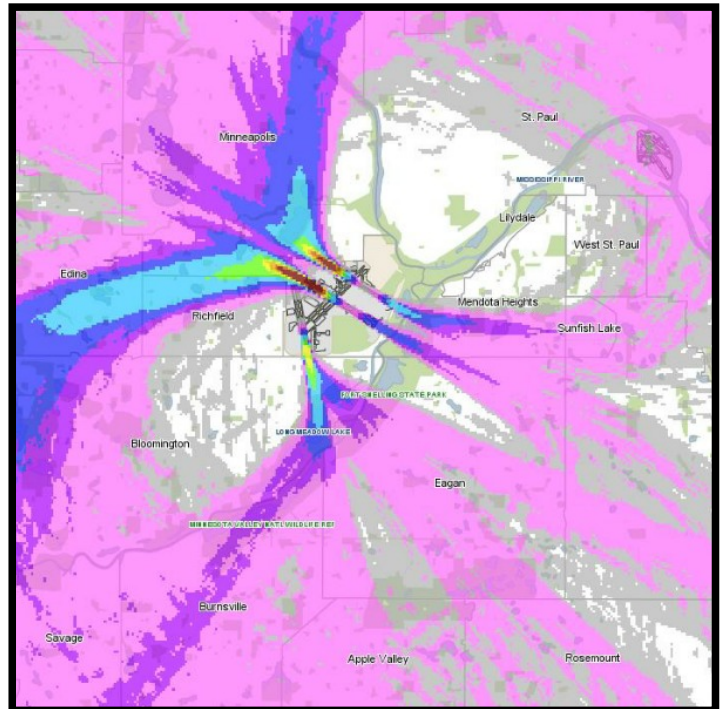
# Airport Noise and Operations Monitoring System Flight Tracks

## Carrier Jet Operations - February 2017

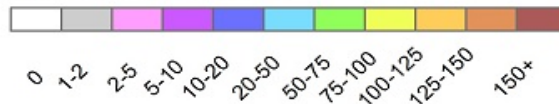
Feb 25 thru 28, 2017 - 1956 Carrier Jet Arrivals



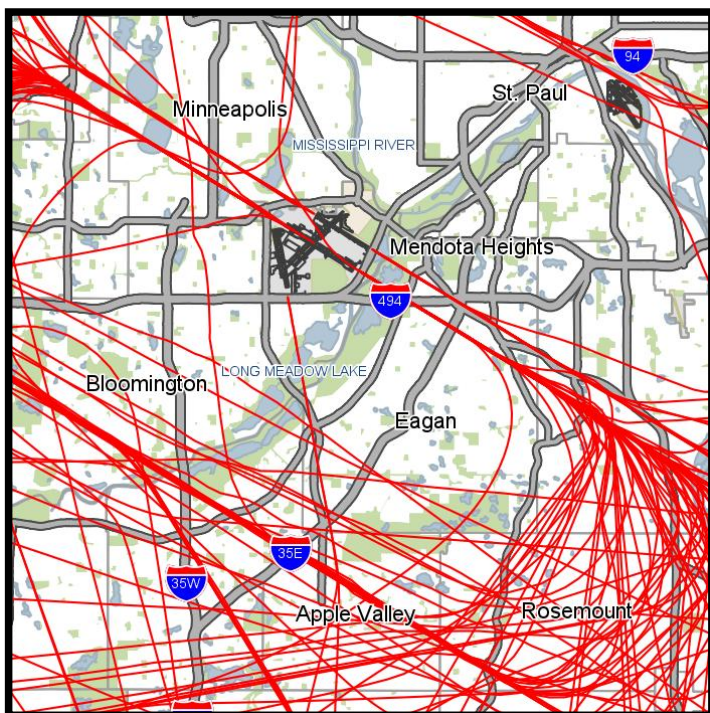
Feb 25 thru 28, 2017 - 1951 Carrier Jet Departures



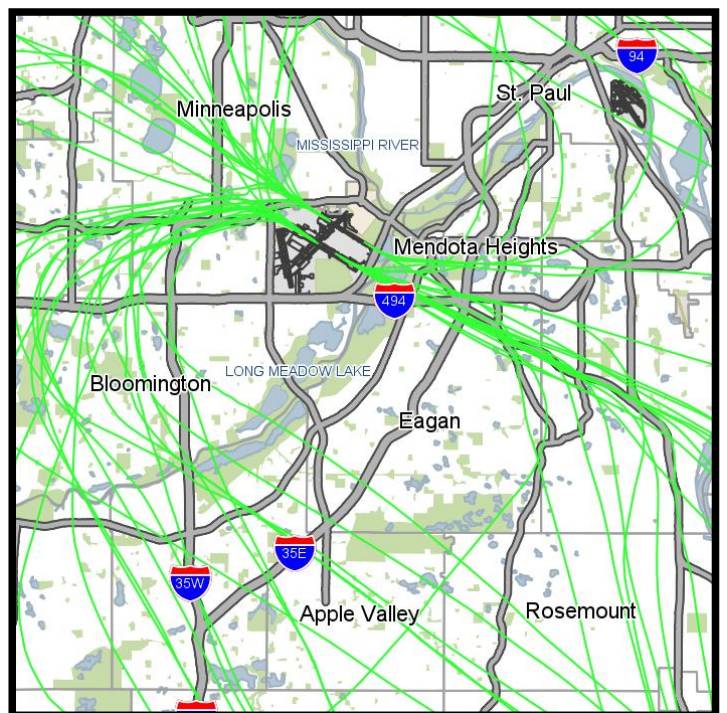
**Average Daily Operations**



Feb 25 thru 28, 2017 - 165 Nighttime\* Carrier Jet Arrivals

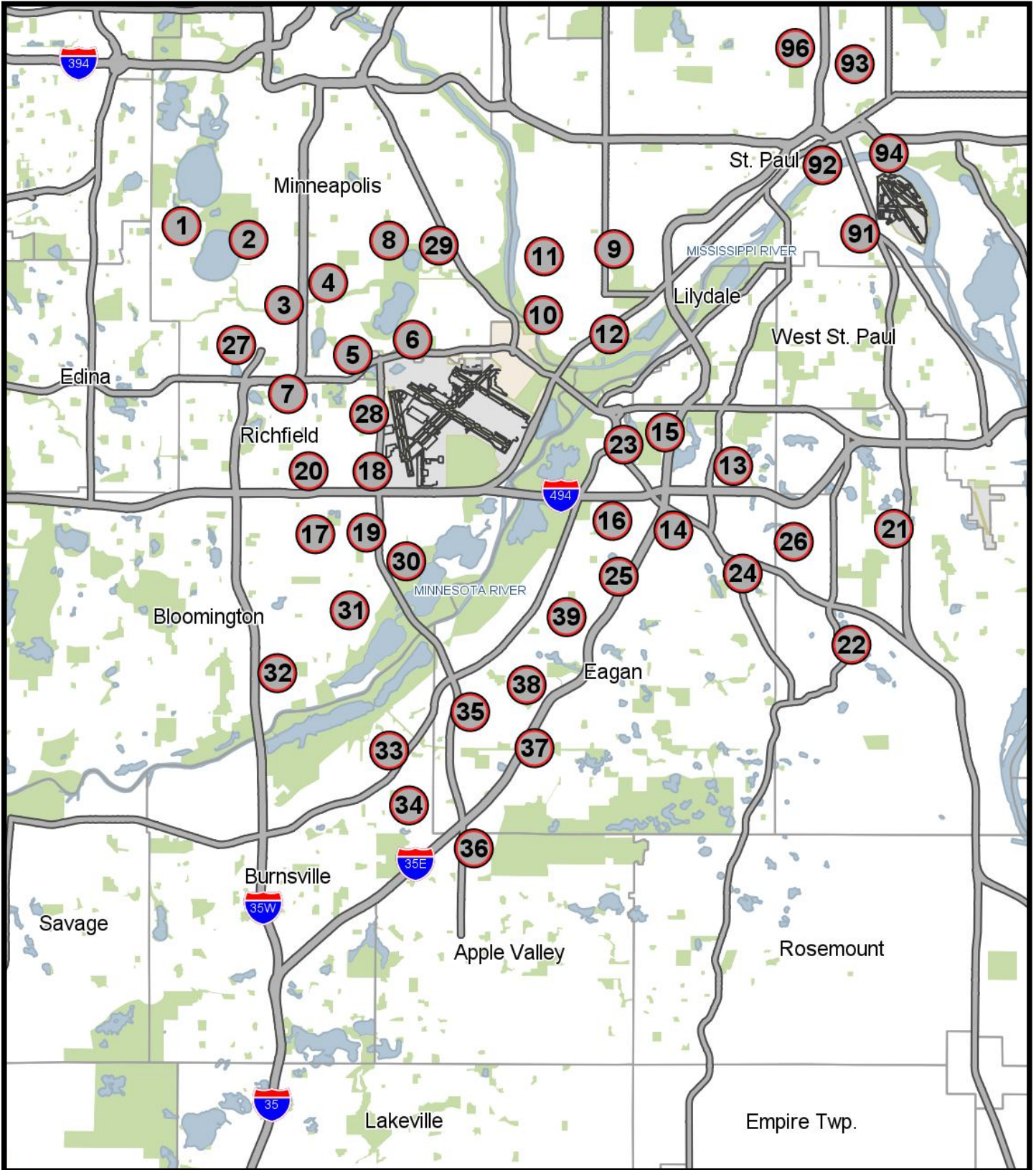


Feb 25 thru 28, 2017 - 60 Nighttime\* Carrier Jet Departures



\*NOTE: Nighttime is 10:30 p.m. to 6:00 a.m.

MSP International Airport  
Remote Monitoring Tower (RMT) Site Locations



● **Remote Monitoring Tower**

Note: The following pages contain noise data representative of real-time recordings from the Remote Monitoring Towers. Occasional data losses occur as a result of short-term equipment malfunctions and/or routine maintenance. Remote Monitoring Terminal (RMT) #11 in St. Paul is being relocated and temporarily disassembled due to construction on the property where the RMT was located. As a result, data for RMT 11 are not available beyond July 17, 2016.

# Time Above dB Threshold for Arrival Related Noise Events

## February 2017

RMT ID	City	Address	Time >= 65dB	Time >= 80dB	Time >= 90dB	Time >= 100dB
1	Minneapolis	Xerxes Ave. & 41st St.	10:09:58	00:00:09	00:00:00	00:00:00
2	Minneapolis	Fremont Ave. & 43rd St.	09:31:23	00:02:45	00:00:00	00:00:00
3	Minneapolis	West Elmwood St. & Belmont Ave.	14:11:13	00:27:59	00:00:14	00:00:00
4	Minneapolis	Park Ave. & 48th St.	10:09:23	00:03:12	00:00:00	00:00:00
5	Minneapolis	12th Ave. & 58th St.	14:48:56	02:57:05	00:00:44	00:00:00
6	Minneapolis	25th Ave. & 57th St.	11:57:25	01:43:11	00:00:31	00:00:00
7	Richfield	Wentworth Ave. & 64th St.	00:09:28	00:00:00	00:00:00	00:00:00
8	Minneapolis	Longfellow Ave. & 43rd St.	00:05:09	00:00:02	00:00:00	00:00:00
9	St. Paul	Saratoga St. & Hartford Ave.	00:00:00	00:00:00	00:00:00	00:00:00
10	St. Paul	Itasca Ave. & Bowdoin St.	00:00:00	00:00:00	00:00:00	00:00:00
11	St. Paul	Finn St. & Scheffer Ave.	00:00:00	00:00:00	00:00:00	00:00:00
12	St. Paul	Alton St. & Rockwood Ave.	00:01:13	00:00:00	00:00:00	00:00:00
13	Mendota Heights	Southeast end of Mohican Court	00:03:25	00:00:00	00:00:00	00:00:00
14	Eagan	1st St. & McKee St.	19:21:28	00:00:14	00:00:00	00:00:00
15	Mendota Heights	Cullon St. & Lexington Ave.	00:06:27	00:00:03	00:00:00	00:00:00
16	Eagan	Avalon Ave. & Vilas Ln.	22:00:44	00:31:46	00:01:02	00:00:00
17	Bloomington	84th St. & 4th Ave.	00:01:01	00:00:01	00:00:00	00:00:00
18	Richfield	75th St. & 17th Ave.	00:41:55	00:00:00	00:00:00	00:00:00
19	Bloomington	16th Ave. & 84th St.	00:00:19	00:00:00	00:00:00	00:00:00
20	Richfield	75th St. & 3rd Ave.	00:00:31	00:00:00	00:00:00	00:00:00
21	Inver Grove Heights	Barbara Ave. & 67th St.	00:02:06	00:00:00	00:00:00	00:00:00
22	Inver Grove Heights	Anne Marie Trail	14:01:35	00:00:06	00:00:00	00:00:00
23	Mendota Heights	End of Kenndon Ave.	00:28:34	00:00:14	00:00:00	00:00:00
24	Eagan	Chapel Ln. & Wren Ln.	20:47:18	00:00:21	00:00:00	00:00:00
25	Eagan	Moonshine Park 1321 Jurdy Rd.	00:18:39	00:00:00	00:00:00	00:00:00
26	Inver Grove Heights	6796 Arkansas Ave. W.	00:17:58	00:00:00	00:00:00	00:00:00
27	Minneapolis	Anthony School 5757 Irving Ave. S.	00:05:57	00:00:00	00:00:00	00:00:00
28	Richfield	6645 16th Ave. S.	01:00:48	00:00:09	00:00:00	00:00:00
29	Minneapolis	Ericsson Elem. School 4315 31st Ave. S.	00:02:13	00:00:00	00:00:00	00:00:00
30	Bloomington	8715 River Ridge Rd.	00:54:44	00:00:15	00:00:00	00:00:00
31	Bloomington	9501 12th Ave. S.	00:00:28	00:00:00	00:00:00	00:00:00
32	Bloomington	10325 Pleasant Ave. S.	00:00:13	00:00:00	00:00:00	00:00:00
33	Burnsville	North River Hills Park	00:00:00	00:00:00	00:00:00	00:00:00
34	Burnsville	Red Oak Park	00:01:16	00:00:00	00:00:00	00:00:00
35	Eagan	2100 Garnet Ln.	02:05:43	00:00:03	00:00:00	00:00:00
36	Apple Valley	Briar Oaks & Scout Pond	03:57:20	00:00:04	00:00:00	00:00:00
37	Eagan	4399 Woodgate Ln. N.	00:00:43	00:00:00	00:00:00	00:00:00
38	Eagan	3957 Turquoise Cir.	00:00:00	00:00:00	00:00:00	00:00:00
39	Eagan	3477 St. Charles Pl.	00:00:14	00:00:00	00:00:00	00:00:00
<b>Total Time for Arrival Noise Events</b>			<b>157:25:47</b>	<b>05:47:39</b>	<b>00:02:31</b>	<b>00:00:00</b>

\* Note: Remote Monitoring Terminal (RMT) #11 in St. Paul is being relocated and temporarily disassembled due to construction on the property where the RMT was located. As a result, data for RMT 11 are not available beyond July 17, 2016. These time values and levels are based upon 1-second leq levels.

# Time Above Threshold dB for Departure Related Noise Events February 2017

RMT ID	City	Address	Time >= 65dB	Time >= 80dB	Time >= 90dB	Time >= 100dB
1	Minneapolis	Xerxes Ave. & 41st St.	02:05:03	00:00:19	00:00:00	00:00:00
2	Minneapolis	Fremont Ave. & 43rd St.	02:51:57	00:00:44	00:00:00	00:00:00
3	Minneapolis	West Elmwood St. & Belmont Ave.	06:11:07	00:06:34	00:00:00	00:00:00
4	Minneapolis	Park Ave. & 48th St.	07:25:25	00:06:25	00:00:00	00:00:00
5	Minneapolis	12th Ave. & 58th St.	31:07:26	01:51:13	00:01:37	00:00:00
6	Minneapolis	25th Ave. & 57th St.	31:43:03	02:54:46	00:05:20	00:00:00
7	Richfield	Wentworth Ave. & 64th St.	20:36:09	00:20:59	00:00:00	00:00:00
8	Minneapolis	Longfellow Ave. & 43rd St.	07:50:42	00:09:02	00:00:04	00:00:00
9	St. Paul	Saratoga St. & Hartford Ave.	00:01:55	00:00:08	00:00:00	00:00:00
10	St. Paul	Itasca Ave. & Bowdoin St.	00:02:26	00:00:00	00:00:00	00:00:00
11	St. Paul	Finn St. & Scheffer Ave.	00:00:00	00:00:00	00:00:00	00:00:00
12	St. Paul	Alton St. & Rockwood Ave.	00:06:45	00:00:12	00:00:00	00:00:00
13	Mendota Heights	Southeast end of Mohican Court	03:52:49	00:01:17	00:00:00	00:00:00
14	Eagan	1st St. & McKee St.	03:43:04	00:03:04	00:00:00	00:00:00
15	Mendota Heights	Cullon St. & Lexington Ave.	04:37:01	00:07:08	00:00:00	00:00:00
16	Eagan	Avalon Ave. & Vilas Ln.	03:40:00	00:09:08	00:00:00	00:00:00
17	Bloomington	84th St. & 4th Ave.	00:15:13	00:00:04	00:00:00	00:00:00
18	Richfield	75th St. & 17th Ave.	09:50:11	00:00:54	00:00:00	00:00:00
19	Bloomington	16th Ave. & 84th St.	04:35:52	00:00:22	00:00:00	00:00:00
20	Richfield	75th St. & 3rd Ave.	00:31:24	00:00:08	00:00:00	00:00:00
21	Inver Grove Heights	Barbara Ave. & 67th St.	00:32:09	00:00:07	00:00:00	00:00:00
22	Inver Grove Heights	Anne Marie Trail	00:46:55	00:00:05	00:00:00	00:00:00
23	Mendota Heights	End of Kenndon Ave.	08:07:01	00:25:22	00:00:08	00:00:00
24	Eagan	Chapel Ln. & Wren Ln.	02:21:37	00:00:44	00:00:00	00:00:00
25	Eagan	Moonshine Park 1321 Jurdy Rd.	04:58:38	00:00:04	00:00:00	00:00:00
26	Inver Grove Heights	6796 Arkansas Ave. W.	01:37:07	00:00:16	00:00:00	00:00:00
27	Minneapolis	Anthony School 5757 Irving Ave. S.	08:46:37	00:05:58	00:00:00	00:00:00
28	Richfield	6645 16th Ave. S.	15:23:35	00:05:54	00:00:00	00:00:00
29	Minneapolis	Ericsson Elem. School 4315 31st Ave. S.	05:31:56	00:02:41	00:00:00	00:00:00
30	Bloomington	8715 River Ridge Rd.	21:54:35	00:34:27	00:00:09	00:00:00
31	Bloomington	9501 12th Ave. S.	02:01:15	00:00:10	00:00:00	00:00:00
32	Bloomington	10325 Pleasant Ave. S.	00:33:50	00:00:00	00:00:00	00:00:00
33	Burnsville	North River Hills Park	02:56:43	00:00:25	00:00:00	00:00:00
34	Burnsville	Red Oak Park	01:11:30	00:00:15	00:00:00	00:00:00
35	Eagan	2100 Garnet Ln.	03:07:42	00:00:34	00:00:00	00:00:00
36	Apple Valley	Briar Oaks & Scout Pond	01:02:47	00:00:00	00:00:00	00:00:00
37	Eagan	4399 Woodgate Ln. N.	02:14:02	00:00:43	00:00:00	00:00:00
38	Eagan	3957 Turquoise Cir.	04:09:09	00:03:11	00:00:00	00:00:00
39	Eagan	3477 St. Charles Pl.	05:17:18	00:03:50	00:00:00	00:00:00
<b>Total Time for Departure Noise Events</b>			<b>233:41:58</b>	<b>07:17:13</b>	<b>00:07:18</b>	<b>00:00:00</b>

\*Note: Remote Monitoring Terminal (RMT) #11 in St. Paul is being relocated and temporarily disassembled due to construction on the property where the RMT was located. As a result, data for RMT 11 are not available beyond July 17, 2016. These time values and levels are based upon 1-second leq levels.



# Arrival Related Noise Events

## February 2017

RMT ID	City	Address	Arrival Events >= 65dB	Arrival Events >= 80dB	Arrival Events >= 90dB	Arrival Events >= 100dB
1	Minneapolis	Xerxes Ave. & 41st St.	2353	2	0	0
2	Minneapolis	Fremont Ave. & 43rd St.	2128	47	0	0
3	Minneapolis	West Elmwood St. & Belmont Ave.	2753	416	4	0
4	Minneapolis	Park Ave. & 48th St.	2185	55	0	0
5	Minneapolis	12th Ave. & 58th St.	2926	2258	17	0
6	Minneapolis	25th Ave. & 57th St.	2354	1853	17	0
7	Richfield	Wentworth Ave. & 64th St.	35	0	0	0
8	Minneapolis	Longfellow Ave. & 43rd St.	17	1	0	0
9	St. Paul	Saratoga St. & Hartford Ave.	0	0	0	0
10	St. Paul	Itasca Ave. & Bowdoin St.	0	0	0	0
11	St. Paul	Finn St. & Scheffer Ave.	0	0	0	0
12	St. Paul	Alton St. & Rockwood Ave.	4	0	0	0
13	Mendota Heights	Southeast end of Mohican Court	14	0	0	0
14	Eagan	1st St. & McKee St.	4199	9	0	0
15	Mendota Heights	Cullon St. & Lexington Ave.	28	1	0	0
16	Eagan	Avalon Ave. & Vilas Ln.	4792	544	10	0
17	Bloomington	84th St. & 4th Ave.	3	1	0	0
18	Richfield	75th St. & 17th Ave.	163	0	0	0
19	Bloomington	16th Ave. & 84th St.	2	0	0	0
20	Richfield	75th St. & 3rd Ave.	1	0	0	0
21	Inver Grove Heights	Barbara Ave. & 67th St.	11	0	0	0
22	Inver Grove Heights	Anne Marie Trail	3143	2	0	0
23	Mendota Heights	End of Kenndon Ave.	105	4	0	0
24	Eagan	Chapel Ln. & Wren Ln.	4620	10	0	0
25	Eagan	Moonshine Park 1321 Jurdy Rd.	62	0	0	0
26	Inver Grove Heights	6796 Arkansas Ave. W.	75	0	0	0
27	Minneapolis	Anthony School 5757 Irving Ave. S.	23	0	0	0
28	Richfield	6645 16th Ave. S.	230	2	0	0
29	Minneapolis	Ericsson Elem. School 4315 31st Ave. S.	7	0	0	0
30	Bloomington	8715 River Ridge Rd.	238	2	0	0
31	Bloomington	9501 12th Ave. S.	2	0	0	0
32	Bloomington	10325 Pleasant Ave. S.	1	0	0	0
33	Burnsville	North River Hills Park	0	0	0	0
34	Burnsville	Red Oak Park	5	0	0	0
35	Eagan	2100 Garnet Ln.	511	2	0	0
36	Apple Valley	Briar Oaks & Scout Pond	859	2	0	0
37	Eagan	4399 Woodgate Ln. N.	2	0	0	0
38	Eagan	3957 Turquoise Cir.	0	0	0	0
39	Eagan	3477 St. Charles Pl.	1	0	0	0
<b>Total Arrival Noise Events</b>			<b>33852</b>	<b>5211</b>	<b>48</b>	<b>0</b>

\*Note: Remote Monitoring Terminal (RMT) #11 in St. Paul is being relocated and temporarily disassembled due to construction on the property where the RMT was located. As a result, data for RMT 11 are not available beyond July 17, 2016. These counts are based upon Lmax.

# Departure Related Noise Events

## February 2017

RMT ID	City	Address	Departure Events >= 65dB	Departure Events >= 80dB	Departure Events >= 90dB	Departure Events >= 100dB
1	Minneapolis	Xerxes Ave. & 41st St.	442	5	0	0
2	Minneapolis	Fremont Ave. & 43rd St.	608	14	0	0
3	Minneapolis	West Elmwood St. & Belmont Ave.	1162	90	0	0
4	Minneapolis	Park Ave. & 48th St.	1347	91	0	0
5	Minneapolis	12th Ave. & 58th St.	4894	1167	29	0
6	Minneapolis	25th Ave. & 57th St.	5499	1627	74	0
7	Richfield	Wentworth Ave. & 64th St.	3461	270	0	0
8	Minneapolis	Longfellow Ave. & 43rd St.	1431	78	2	0
9	St. Paul	Saratoga St. & Hartford Ave.	7	2	0	0
10	St. Paul	Itasca Ave. & Bowdoin St.	6	0	0	0
11	St. Paul	Finn St. & Scheffer Ave.	0	0	0	0
12	St. Paul	Alton St. & Rockwood Ave.	19	3	0	0
13	Mendota Heights	Southeast end of Mohican Court	764	20	0	0
14	Eagan	1st St. & McKee St.	624	43	0	0
15	Mendota Heights	Cullon St. & Lexington Ave.	889	106	0	0
16	Eagan	Avalon Ave. & Vilas Ln.	559	102	0	0
17	Bloomington	84th St. & 4th Ave.	52	1	0	0
18	Richfield	75th St. & 17th Ave.	2086	24	0	0
19	Bloomington	16th Ave. & 84th St.	984	6	0	0
20	Richfield	75th St. & 3rd Ave.	108	3	0	0
21	Inver Grove Heights	Barbara Ave. & 67th St.	130	2	0	0
22	Inver Grove Heights	Anne Marie Trail	175	3	0	0
23	Mendota Heights	End of Kenndon Ave.	1372	303	2	0
24	Eagan	Chapel Ln. & Wren Ln.	437	11	0	0
25	Eagan	Moonshine Park 1321 Jurdy Rd.	659	2	0	0
26	Inver Grove Heights	6796 Arkansas Ave. W.	361	3	0	0
27	Minneapolis	Anthony School 5757 Irving Ave. S.	1757	92	0	0
28	Richfield	6645 16th Ave. S.	2932	89	0	0
29	Minneapolis	Ericsson Elem. School 4315 31st Ave. S.	1052	26	0	0
30	Bloomington	8715 River Ridge Rd.	3338	386	3	0
31	Bloomington	9501 12th Ave. S.	389	3	0	0
32	Bloomington	10325 Pleasant Ave. S.	124	0	0	0
33	Burnsville	North River Hills Park	601	6	0	0
34	Burnsville	Red Oak Park	267	2	0	0
35	Eagan	2100 Garnet Ln.	620	8	0	0
36	Apple Valley	Briar Oaks & Scout Pond	234	1	0	0
37	Eagan	4399 Woodgate Ln. N.	396	8	0	0
38	Eagan	3957 Turquoise Cir.	742	33	0	0
39	Eagan	3477 St. Charles Pl.	1025	36	0	0
<b>Total Departure Noise Events</b>			<b>41553</b>	<b>4666</b>	<b>110</b>	<b>0</b>

\*Note: Remote Monitoring Terminal (RMT) #11 in St. Paul is being relocated and temporarily disassembled due to construction on the property where the RMT was located. As a result, data for RMT 11 are not available beyond July 17, 2016. These counts are based upon Lmax.

# Top Ten Loudest Aircraft Noise Events for MSP

February 2017

(RMT Site#1)

Xerxes Ave. & 41st St., Minneapolis

Date/Time	Flight Number	Aircraft Type	Arrival/ Departure	Runway	Lmax(dB)
02/23/2017 11:53	DAL1768	B757	A	12R	86.2
02/23/2017 18:05	DAL2397	MD80	D	30R	82.7
02/24/2017 10:33	DAL121	B777	D	30L	82.2
02/28/2017 15:58	DAL1399	MD80	D	30L	81.8
02/28/2017 11:53	DAL1469	A330	D	30L	81.4
02/21/2017 15:34	DAL163	A330	A	12R	80.3
02/26/2017 11:46	DAL1469	A330	D	30L	80.1
02/20/2017 13:32	DAL140	A319	A	12R	79.3
02/16/2017 5:10	UPS560	MD11	A	12R	79
02/12/2017 15:24	DAL160	A330	D	30L	79

(RMT Site#2)

Fremont Ave. & 43rd St., Minneapolis

Date/Time	Flight Number	Aircraft Type	Arrival/ Departure	Runway	Lmax(dB)
02/20/2017 8:04	DAL2563	MD80	A	12L	87.6
02/20/2017 18:27	DAL1103	B739	A	12L	85.6
02/15/2017 20:11	MTN7553	ATR	A	12L	84.6
02/27/2017 16:47	DAL1667	MD80	A	12L	84.5
02/21/2017 13:45	DAL2149	MD80	A	12L	84.4
02/27/2017 12:39	DAL987	MD80	A	12L	83.5
02/21/2017 21:23	Unknown	UKN	A	12L	83.5
02/21/2017 15:12	DAL9861	B777	A	12L	83.1
02/16/2017 20:34	UAL1124	A320	A	12L	83.1
02/06/2017 18:45	AAL1559	MD80	A	12L	83.1

(RMT Site#3)

West Elmwood St. & Belmont Ave., Minneapolis

Date/Time	Flight Number	Aircraft Type	Arrival/ Departure	Runway	Lmax(dB)
02/17/2017 11:32	DAL1668	B757	A	12R	93.8
02/16/2017 17:22	DAL2118	B757	A	12R	92.8
02/19/2017 11:51	DAL2116	B757	A	12R	92.3
02/23/2017 11:53	DAL1768	B757	A	12R	92
02/28/2017 18:35	DAL1549	MD80	D	30L	88.5
02/20/2017 14:54	AAL312	MD80	A	12R	88.3
02/23/2017 18:05	DAL2397	MD80	D	30R	88
02/16/2017 5:42	FDX1718	MD11	A	12R	86.8
02/22/2017 5:23	FDX1407	MD11	A	12R	86.8
02/16/2017 9:37	AAL329	MD80	A	12R	86.3

# Top Ten Loudest Aircraft Noise Events for MSP

February 2017

(RMT Site#4)

Park Ave. & 48th St., Minneapolis

Date/Time	Flight Number	Aircraft Type	Arrival/ Departure	Runway	Lmax(dB)
02/28/2017 18:08	DAL2397	MD80	D	30R	89.8
02/18/2017 21:34	DAL2593	MD80	D	30R	88.6
02/22/2017 6:27	DAL1582	MD80	D	30L	87.2
02/14/2017 10:48	DAL1900	MD80	D	30L	86.5
02/28/2017 7:18	DAL9980	MD80	D	30R	86.4
02/28/2017 20:35	DAL1858	MD90	D	30R	86.3
02/14/2017 13:31	DAL1682	MD80	D	30R	85.7
02/24/2017 18:11	DAL2397	MD80	D	30R	85.3
02/20/2017 13:19	DAL2149	MD80	A	12L	85.3
02/20/2017 14:09	AAL2455	MD80	A	12L	85.1

(RMT Site#5)

12th Ave. & 58th St., Minneapolis

Date/Time	Flight Number	Aircraft Type	Arrival/ Departure	Runway	Lmax(dB)
02/21/2017 17:45	FDX715	MD11	A	12R	95.8
02/22/2017 5:12	FDX1718	MD11	A	12R	94.7
02/14/2017 14:35	Unknown	UKN	D	30L	94.5
02/28/2017 14:52	AAL1409	MD80	D	30L	94.3
02/22/2017 14:31	AAL1409	MD80	D	30L	94
02/28/2017 15:58	DAL1399	MD80	D	30L	94
02/23/2017 11:54	DAL1768	B757	A	12R	93.4
02/15/2017 10:49	Unknown	UKN	D	30L	93.3
02/15/2017 10:55	Unknown	UKN	D	30L	93.1
02/22/2017 10:59	AAL2532	MD80	D	30L	93

(RMT Site#6)

25th Ave. & 57th St., Minneapolis

Date/Time	Flight Number	Aircraft Type	Arrival/ Departure	Runway	Lmax(dB)
02/10/2017 15:18	DAL1264	MD80	D	30R	97.4
02/23/2017 8:50	DAL1931	MD80	D	30R	97.1
02/23/2017 15:19	DAL968	MD80	D	30R	97
02/23/2017 6:39	DAL1582	MD80	D	30R	96.7
02/22/2017 15:20	DAL968	MD80	D	30R	96.6
02/18/2017 21:33	DAL2593	MD80	D	30R	96.5
02/26/2017 14:19	DAL1667	MD80	D	30R	96.4
02/28/2017 6:36	DAL1582	MD80	D	30R	96.2
02/11/2017 15:52	DAL53	MD80	D	30R	96.2
02/15/2017 15:19	DAL1264	MD80	D	30R	96.1

# Top Ten Loudest Aircraft Noise Events for MSP

February 2017

(RMT Site#7)

Wentworth Ave. & 64th St., Richfield

Date/Time	Flight Number	Aircraft Type	Arrival/ Departure	Runway	Lmax(dB)
02/05/2017 5:34	DAL1991	MD80	D	30L	89.7
02/23/2017 9:38	AAL1405	MD80	D	30L	89.5
02/28/2017 21:52	AAL2201	MD80	D	30L	89.1
02/24/2017 6:37	DAL1582	MD80	D	30L	88.7
02/23/2017 16:43	AAL46	MD80	D	30L	88.3
02/05/2017 9:00	DAL1815	MD80	D	30L	88.1
02/24/2017 13:50	AAL1210	MD80	D	30L	88.1
02/12/2017 12:42	AAL2455	MD80	D	30L	88
02/25/2017 10:34	DAL1627	MD80	D	30L	87.9
02/15/2017 16:10	AAL1409	MD80	D	30L	87.4

(RMT Site#8)

Longfellow Ave. & 43rd St., Minneapolis

Date/Time	Flight Number	Aircraft Type	Arrival/ Departure	Runway	Lmax(dB)
02/25/2017 10:30	DAL1796	MD80	D	30R	91.5
02/13/2017 13:30	DAL1682	MD80	D	30R	91.2
02/28/2017 14:20	DAL1667	MD80	D	30R	89.3
02/28/2017 6:36	DAL1582	MD80	D	30R	89.2
02/24/2017 9:54	DAL746	MD80	D	30R	88.5
02/11/2017 15:22	DAL120	MD80	D	30R	88.4
02/12/2017 10:37	DAL1900	MD80	D	30R	88.3
02/25/2017 15:24	DAL120	MD80	D	30R	88.3
02/11/2017 15:53	DAL53	MD80	D	30R	87.8
02/26/2017 8:49	DAL1931	MD80	D	30R	87.7

(RMT Site#9)

Saratoga St. & Hartford Ave., St. Paul

Date/Time	Flight Number	Aircraft Type	Arrival/ Departure	Runway	Lmax(dB)
02/10/2017 7:03	BMJ72	BE65	D	12L	84.1
02/10/2017 7:11	BMJ38	BE80	D	12L	82.8
02/14/2017 7:35	BMJ48	BE65	D	30R	75.7
02/04/2017 7:21	BMJ70	BE65	D	12L	73.4
02/10/2017 7:13	BMJ68	BE99	D	12L	72.6
02/13/2017 22:14	DAL2451	A320	D	30L	71.4
02/08/2017 6:57	BMJ48	BE65	D	30L	70.3

---

# Top Ten Loudest Aircraft Noise Events for MSP

February 2017

(RMT Site#10)

Itasca Ave. & Bowdoin St., St. Paul

Date/Time	Flight Number	Aircraft Type	Arrival/ Departure	Runway	Lmax(dB)
02/14/2017 7:34	BMJ48	BE65	D	30R	78.2
02/08/2017 6:56	BMJ48	BE65	D	30L	74.1
02/24/2017 6:51	BMJ48	BE65	D	30R	73.6
02/10/2017 7:10	BMJ38	BE80	D	12L	72.1
02/10/2017 7:06	BMJ62	BE65	D	12L	71.3
02/10/2017 7:13	BMJ68	BE99	D	12L	68.2

(RMT Site#11)

Finn St. & Scheffer Ave., St. Paul

\*Note: Remote Monitoring Terminal (RMT) #11 in St. Paul is being relocated and temporarily disassembled due to construction on the property where the RMT was located. As a result, data for RMT 11 are not available beyond July 17, 2016. These counts are based upon Lmax.

(RMT Site#12)

Alton St. & Rockwood Ave., St. Paul

Date/Time	Flight Number	Aircraft Type	Arrival/ Departure	Runway	Lmax(dB)
02/08/2017 6:56	BMJ48	BE65	D	30L	87.2
02/10/2017 7:03	BMJ72	BE65	D	12L	82.8
02/10/2017 7:10	BMJ38	BE80	D	12L	81
02/15/2017 20:06	BMJ63	BE80	A	12L	78.3
02/04/2017 7:20	BMJ70	BE65	D	12L	77.9
02/10/2017 7:06	BMJ62	BE65	D	12L	76.1
02/10/2017 7:09	BMJ70	BE65	D	12L	75.8
02/16/2017 7:41	BMJ52	BE99	D	12L	74.8
02/04/2017 7:30	BMJ48	BE65	D	12L	73.8
02/04/2017 7:25	BMJ52	BE65	D	12L	73.4

# Top Ten Loudest Aircraft Noise Events for MSP

February 2017

(RMT Site#13)

Southeast end of Mohican Court, Mendota Heights

Date/Time	Flight Number	Aircraft Type	Arrival/ Departure	Runway	Lmax(dB)
02/20/2017 18:05	DAL2397	MD80	D	12L	86.5
02/16/2017 10:40	DAL1900	MD80	D	12L	85.6
02/21/2017 20:24	DAL1858	MD90	D	12L	83.8
02/13/2017 7:43	DAL808	A320	D	12L	82.8
02/27/2017 18:04	DAL2397	MD80	D	12L	82.1
02/17/2017 9:07	DAL589	A320	D	12L	81.8
02/21/2017 21:05	DAL1059	A320	D	12L	81.6
02/20/2017 19:33	DAL913	A320	D	12L	81.5
02/20/2017 18:56	DAL1699	MD90	D	12L	81
02/21/2017 20:20	UAL372	B738	D	12L	81

(RMT Site#14)

1st St. & McKee St., Eagan

Date/Time	Flight Number	Aircraft Type	Arrival/ Departure	Runway	Lmax(dB)
02/23/2017 11:07	AAL2532	MD80	D	12L	89
02/10/2017 15:44	DAL811	B739	A	30L	85.1
02/20/2017 10:51	DAL791	A320	D	12R	84.7
02/23/2017 11:48	DAL1469	A330	D	12R	84
02/15/2017 9:09	BMJ38	BE80	A	30L	83.3
02/17/2017 11:56	DAL1469	A330	D	12R	83.1
02/17/2017 6:33	DAL1582	MD80	D	12L	83
02/27/2017 9:15	DAL515	A330	D	12R	82.6
02/20/2017 9:10	DAL515	A330	D	12R	82.6
02/21/2017 9:30	DAL515	A330	D	12R	82.5

(RMT Site#15)

Cullon St. & Lexington Ave., Mendota Heights

Date/Time	Flight Number	Aircraft Type	Arrival/ Departure	Runway	Lmax(dB)
02/16/2017 10:40	DAL1900	MD80	D	12L	85.6
02/20/2017 13:10	DAL1503	MD90	D	12L	85.3
02/21/2017 20:53	DAL1597	B739	D	12L	84.6
02/20/2017 18:05	DAL2397	MD80	D	12L	84.1
02/27/2017 9:10	DAL589	B739	D	12L	83.9
02/20/2017 16:04	ASA37	B739	D	12L	83.9
02/19/2017 21:35	CPZ5786	E170	D	12L	83.8
02/27/2017 18:04	DAL2397	MD80	D	12L	83.8
02/21/2017 20:57	DAL2593	B739	D	12L	83.4
02/04/2017 13:52	DAL1151	MD90	D	12L	83.4

# Top Ten Loudest Aircraft Noise Events for MSP

February 2017

(RMT Site#16)

Avalon Ave. & Vilas Ln., Eagan

Date/Time	Flight Number	Aircraft Type	Arrival/ Departure	Runway	Lmax(dB)
02/13/2017 18:46	DAL1137	B757	A	30L	98.9
02/22/2017 10:14	DAL201	B757	A	30L	98.6
02/12/2017 8:52	DAL2610	B757	A	30L	98
02/18/2017 9:56	DAL201	B757	A	30L	96.7
02/13/2017 10:04	DAL201	B757	A	30L	96.6
02/24/2017 21:04	DAL1712	B757	A	30L	96.5
02/14/2017 5:36	DAL2486	B757	A	30L	96.3
02/24/2017 11:26	DAL1847	B757	A	30L	96
02/11/2017 11:30	DAL1550	B757	A	30L	92.8
02/07/2017 11:28	BMJ74	BE80	A	30L	90.4

(RMT Site#17)

84th St. & 4th Ave., Bloomington

Date/Time	Flight Number	Aircraft Type	Arrival/ Departure	Runway	Lmax(dB)
02/10/2017 7:18	BMJ74	BE80	D	17	82
02/13/2017 5:04	SCX610	B738	A	04	80
02/18/2017 10:14	DAL1714	B763	D	30L	79.9
02/26/2017 9:19	DAL515	A330	D	30L	79.2
02/18/2017 10:36	DAL507	A320	D	30L	79
02/13/2017 10:14	DAL515	A330	D	30L	78.4
02/18/2017 13:53	DAL705	A320	D	30L	77.7
02/10/2017 15:05	DAL857	B763	D	30L	77.6
02/13/2017 14:32	AAL1409	MD80	D	30L	77.6
02/26/2017 9:27	DAL1714	B763	D	30L	77.4

(RMT Site#18)

75th St. & 17th Ave., Richfield

Date/Time	Flight Number	Aircraft Type	Arrival/ Departure	Runway	Lmax(dB)
02/06/2017 13:30	DAL2267	MD80	D	17	84.8
02/13/2017 14:32	AAL1409	MD80	D	30L	84
02/06/2017 7:10	DAL1996	MD80	D	17	82.5
02/20/2017 10:47	DAL971	MD80	D	17	82.3
02/06/2017 20:27	DAL2481	MD80	D	17	81.7
02/28/2017 10:57	AAL2532	MD80	D	17	81.6
02/16/2017 20:22	DAL2113	MD80	D	17	81.5
02/20/2017 14:40	AAL1409	MD80	D	17	81.4
02/20/2017 13:30	DAL1686	MD80	D	17	81.3
02/05/2017 19:55	DAL2511	MD80	D	17	81.3



# Top Ten Loudest Aircraft Noise Events for MSP

February 2017

(RMT Site#19)

16th Ave. & 84th St., Bloomington

Date/Time	Flight Number	Aircraft Type	Arrival/ Departure	Runway	Lmax(dB)
02/10/2017 7:18	BMJ74	BE80	D	17	86.3
02/13/2017 14:32	AAL1409	MD80	D	30L	83.2
02/21/2017 15:29	DAL968	MD80	D	17	81.8
02/27/2017 14:19	DAL1667	MD80	D	17	81.7
02/10/2017 7:20	BMJ64	BE65	D	17	80.5
02/06/2017 10:34	DAL1900	MD80	D	17	80.3
02/04/2017 9:30	AAL1405	MD80	D	17	79.9
02/06/2017 12:43	AAL2455	MD80	D	17	79.8
02/06/2017 19:43	AAL2201	MD80	D	17	79.2
02/17/2017 12:02	DAL1629	MD80	D	17	79

(RMT Site#20)

75th St. & 3rd Ave., Richfield

Date/Time	Flight Number	Aircraft Type	Arrival/ Departure	Runway	Lmax(dB)
02/26/2017 9:19	DAL515	A330	D	30L	82.1
02/18/2017 10:14	DAL1714	B763	D	30L	81.1
02/13/2017 14:32	AAL1409	MD80	D	30L	80.4
02/18/2017 10:35	DAL507	A320	D	30L	79.6
02/10/2017 15:05	DAL857	B763	D	30L	79.4
02/13/2017 10:14	DAL515	A330	D	30L	79.1
02/18/2017 13:53	DAL705	A320	D	30L	79
02/17/2017 19:28	DAL1505	B757	D	30L	78.7
02/22/2017 13:54	DAL705	A320	D	30L	78.5
02/18/2017 10:56	DAL525	B757	D	30L	78.5

(RMT Site#21)

Barbara Ave. & 67th St., Inver Grove Heights

Date/Time	Flight Number	Aircraft Type	Arrival/ Departure	Runway	Lmax(dB)
02/17/2017 16:40	DAL140	A330	D	12R	81.8
02/16/2017 15:26	DAL160	A330	D	12R	80.4
02/16/2017 16:40	DAL140	A330	D	12R	79.7
02/17/2017 15:34	DAL160	A330	D	12R	79.3
02/16/2017 10:41	DAL1900	MD80	D	12L	78.6
02/23/2017 11:49	DAL1469	A330	D	12R	78
02/11/2017 20:11	DAL162	A330	D	12R	78
02/16/2017 20:04	DAL162	A330	D	12R	77.8
02/27/2017 6:47	DAL1582	MD80	D	12R	77.6
02/17/2017 18:12	DAL1088	B757	D	12R	77.6

# Top Ten Loudest Aircraft Noise Events for MSP

February 2017

(RMT Site#22)

Anne Marie Trail, Inver Grove Heights

Date/Time	Flight Number	Aircraft Type	Arrival/ Departure	Runway	Lmax(dB)
02/28/2017 10:45	DAL957	A330	D	12R	82.4
02/14/2017 11:44	Unknown	UKN	A	30L	82
02/24/2017 8:39	BMJ72	BE65	A	30R	81.7
02/16/2017 11:27	DAL121	B777	D	12R	81
02/28/2017 8:48	DAL1931	MD80	D	12R	80.6
02/23/2017 5:03	UPS560	MD11	A	30L	79.8
02/07/2017 11:26	BMJ74	BE80	A	30L	79.4
02/18/2017 9:54	DAL201	B757	A	30L	79
02/22/2017 8:55	DAL1866	B757	A	30L	78.8
02/04/2017 22:08	FDX715	MD11	A	30L	78.7

(RMT Site#23)

End of Kenndon Ave., Mendota Heights

Date/Time	Flight Number	Aircraft Type	Arrival/ Departure	Runway	Lmax(dB)
02/20/2017 18:05	DAL2397	MD80	D	12L	92.5
02/16/2017 10:40	DAL1900	MD80	D	12L	91.7
02/27/2017 10:12	Unknown	UKN	D	12L	89.8
02/27/2017 18:04	DAL2397	MD80	D	12L	89
02/20/2017 13:10	DAL1503	MD90	D	12L	88.6
02/13/2017 7:33	DAL1996	MD80	D	12L	88.2
02/21/2017 20:24	DAL1858	MD90	D	12L	87.6
02/13/2017 7:42	DAL808	A320	D	12L	87.6
02/20/2017 12:05	DAL1484	MD90	D	12L	87.2
02/23/2017 14:08	Unknown	UKN	A	30R	87.1

(RMT Site#24)

Chapel Ln. & Wren Ln., Eagan

Date/Time	Flight Number	Aircraft Type	Arrival/ Departure	Runway	Lmax(dB)
02/23/2017 11:08	AAL2532	MD80	D	12L	85.3
02/28/2017 8:48	DAL1931	MD80	D	12R	83.8
02/24/2017 7:42	DAL1650	B738	A	30L	83.5
02/02/2017 12:29	DAL2836	MD80	A	30L	83.2
02/27/2017 9:15	DAL515	A330	D	12R	83.1
02/17/2017 6:33	DAL1582	MD80	D	12L	82.5
02/16/2017 11:27	DAL121	B777	D	12R	82.3
02/21/2017 15:20	DAL160	A330	D	12R	82.1
02/20/2017 10:51	DAL791	A320	D	12R	82
02/13/2017 19:00	SWA183	B733	A	30L	81.7

# Top Ten Loudest Aircraft Noise Events for MSP

February 2017

(RMT Site#25)

Moonshine Park 1321 Jurdy Rd., Eagan

Date/Time	Flight Number	Aircraft Type	Arrival/ Departure	Runway	Lmax(dB)
02/06/2017 15:18	Unknown	UKN	D	12R	80.8
02/27/2017 15:23	DAL968	MD80	D	17	80
02/04/2017 8:50	DAL1260	MD80	D	17	79.3
02/28/2017 8:48	DAL1931	MD80	D	12R	79.2
02/27/2017 8:48	DAL1931	MD80	D	17	78.2
02/10/2017 8:50	AAL1900	E190	D	17	78.1
02/21/2017 13:38	DAL1461	A319	D	17	77.8
02/28/2017 16:28	DAL1231	A320	A	30L	77.7
02/17/2017 11:03	Unknown	UKN	D	12L	77.3
02/06/2017 13:31	DAL2267	MD80	D	17	77.1

(RMT Site#26)

6796 Arkansas Ave. W., Inver Grove Heights

Date/Time	Flight Number	Aircraft Type	Arrival/ Departure	Runway	Lmax(dB)
02/27/2017 6:47	DAL1582	MD80	D	12R	82.5
02/23/2017 11:49	DAL1469	A330	D	12R	82
02/13/2017 7:34	DAL1996	MD80	D	12L	81.8
02/28/2017 10:33	DAL121	B777	D	12R	79.6
02/11/2017 20:11	DAL162	A330	D	12R	79.1
02/17/2017 16:39	DAL140	A330	D	12R	79.1
02/17/2017 15:34	DAL160	A330	D	12R	79
02/27/2017 10:39	DAL121	B777	D	12R	78.6
02/17/2017 6:33	DAL1582	MD80	D	12L	78.2
02/27/2017 19:59	DAL162	A330	D	12R	77.8

(RMT Site#27)

Anthony School 5757 Irving Ave. S., Minneapolis

Date/Time	Flight Number	Aircraft Type	Arrival/ Departure	Runway	Lmax(dB)
02/15/2017 9:40	AAL1405	MD80	D	30L	89.3
02/24/2017 14:32	AAL1409	MD80	D	30L	89.3
02/28/2017 14:52	AAL1409	MD80	D	30L	88.6
02/22/2017 19:24	AAL2201	MD80	D	30L	87.7
02/11/2017 10:15	DAL2345	MD80	D	30L	87.6
02/22/2017 7:57	FDX420	MD11	D	30L	87.3
02/24/2017 11:08	AAL2532	MD80	D	30L	87.2
02/09/2017 9:43	AAL1405	MD80	D	30L	87.1
02/26/2017 12:45	AAL2455	MD80	D	30L	87
02/12/2017 13:38	DAL1682	MD80	D	30L	86.8

# Top Ten Loudest Aircraft Noise Events for MSP

February 2017

(RMT Site#28)

6645 16th Ave. S., Richfield

Date/Time	Flight Number	Aircraft Type	Arrival/ Departure	Runway	Lmax(dB)
02/07/2017 19:30	AAL2201	MD80	D	30L	88.2
02/02/2017 12:37	AAL2455	MD80	D	30L	87.2
02/19/2017 7:48	AAL1507	MD80	D	17	86.5
02/27/2017 7:47	DAL1122	B757	D	17	86.3
02/13/2017 7:25	SKW5425	E170	D	17	86.3
02/26/2017 9:26	DAL1714	B763	D	30L	86.2
02/07/2017 14:39	AAL1409	MD80	D	30L	86.2
02/06/2017 7:18	DAL1632	MD90	D	17	85.9
02/12/2017 12:42	AAL2455	MD80	D	30L	85.5
02/13/2017 14:31	AAL1409	MD80	D	30L	85.5

(RMT Site#29)

Ericsson Elem. School 4315 31st Ave. S., Minneapolis

Date/Time	Flight Number	Aircraft Type	Arrival/ Departure	Runway	Lmax(dB)
02/02/2017 12:48	DAL1900	MD80	D	30R	87.1
02/13/2017 14:06	DAL2267	MD80	D	30R	86.9
02/12/2017 9:49	DAL1743	MD80	D	30R	86.1
02/26/2017 9:24	DAL746	MD80	D	30R	85.3
02/13/2017 17:38	DAL1264	MD80	D	30R	84.9
02/07/2017 7:19	BMJ48	BE65	D	30R	84.7
02/15/2017 10:31	DAL1900	MD80	D	30R	84.6
02/12/2017 15:46	DAL1264	MD80	D	30R	83.9
02/26/2017 8:49	DAL1931	MD80	D	30R	83.4
02/12/2017 10:37	DAL1900	MD80	D	30R	83.3

(RMT Site#30)

8715 River Ridge Rd., Bloomington

Date/Time	Flight Number	Aircraft Type	Arrival/ Departure	Runway	Lmax(dB)
02/22/2017 13:37	AAL2455	MD80	D	17	91.9
02/11/2017 14:29	AAL1409	MD80	D	17	90.1
02/11/2017 12:38	AAL2455	MD80	D	17	90.1
02/16/2017 15:37	DAL1264	MD80	D	17	89.8
02/10/2017 12:50	AAL2455	MD80	D	17	89.8
02/16/2017 11:00	AAL2532	MD80	D	17	89.5
02/16/2017 15:02	AAL1409	MD80	D	17	89.5
02/03/2017 12:53	AAL2455	MD80	D	17	89.1
02/28/2017 10:57	AAL2532	MD80	D	17	89
02/03/2017 9:30	AAL1405	MD80	D	17	88.9

# Top Ten Loudest Aircraft Noise Events for MSP

February 2017

(RMT Site#31)

9501 12th Ave. S., Bloomington

Date/Time	Flight Number	Aircraft Type	Arrival/ Departure	Runway	Lmax(dB)
02/26/2017 11:04	AAL2532	MD80	D	17	82.4
02/13/2017 14:32	AAL1409	MD80	D	30L	81.6
02/18/2017 14:46	AAL1034	B738	D	17	80.8
02/11/2017 13:26	FFT327	A319	D	17	79.8
02/13/2017 16:25	AAL2423	MD80	D	17	78.7
02/13/2017 13:31	FFT327	A319	D	17	77.9
02/18/2017 10:15	DAL1714	B763	D	30L	77.7
02/13/2017 10:30	Unknown	UKN	D	17	77.7
02/20/2017 11:03	AAL2532	MD80	D	17	77.5
02/16/2017 14:09	AAL1210	B738	D	17	77.5

(RMT Site#32)

10325 Pleasant Ave. S., Bloomington

Date/Time	Flight Number	Aircraft Type	Arrival/ Departure	Runway	Lmax(dB)
02/18/2017 14:47	AAL1034	B738	D	17	78.2
02/13/2017 10:31	Unknown	UKN	D	17	76.7
02/20/2017 11:04	AAL2532	MD80	D	17	76.1
02/11/2017 13:27	FFT327	A319	D	17	75.8
02/13/2017 16:26	AAL2423	MD80	D	17	75.3
02/22/2017 12:07	SWA1317	B733	D	17	75.3
02/10/2017 15:17	SCX403	B738	D	17	75.2
02/13/2017 11:33	DAL2400	A320	D	17	75
02/26/2017 11:04	AAL2532	MD80	D	17	74.9
02/09/2017 11:41	DAL736	B739	D	17	74.7

(RMT Site#33)

North River Hills Park, Burnsville

Date/Time	Flight Number	Aircraft Type	Arrival/ Departure	Runway	Lmax(dB)
02/06/2017 9:09	DAL2448	MD80	D	17	83.7
02/22/2017 13:38	AAL2455	MD80	D	17	82.2
02/27/2017 11:03	AAL2532	MD80	D	17	81.2
02/16/2017 11:36	Unknown	UKN	D	17	81
02/10/2017 17:59	DAL2653	MD90	D	17	80.4
02/11/2017 12:39	AAL2455	MD80	D	17	80.1
02/10/2017 19:44	AAL2201	MD80	D	17	79.4
02/11/2017 14:30	AAL1409	MD80	D	17	78.9
02/10/2017 12:50	AAL2455	MD80	D	17	77.6
02/18/2017 11:23	SCX747	B738	D	17	77.4

# Top Ten Loudest Aircraft Noise Events for MSP

February 2017

(RMT Site#34)

Red Oak Park, Burnsville

Date/Time	Flight Number	Aircraft Type	Arrival/ Departure	Runway	Lmax(dB)
02/18/2017 7:37	DAL1122	MD80	D	17	84.1
02/22/2017 13:38	AAL2455	MD80	D	17	83.7
02/10/2017 19:44	AAL2201	MD80	D	17	79.4
02/18/2017 12:44	AAL2455	MD80	D	17	79.3
02/17/2017 19:30	AAL2201	MD80	D	17	78.8
02/26/2017 9:32	AAL1405	MD80	D	17	78.6
02/11/2017 12:39	AAL2455	MD80	D	17	78.5
02/10/2017 12:51	AAL2455	MD80	D	17	78.5
02/18/2017 7:28	DAL501	A320	D	17	78
02/18/2017 9:32	AAL1405	MD80	D	17	77.4

(RMT Site#35)

2100 Garnet Ln., Eagan

Date/Time	Flight Number	Aircraft Type	Arrival/ Departure	Runway	Lmax(dB)
02/10/2017 14:41	AAL1409	MD80	D	17	83.5
02/28/2017 9:33	AAL1405	MD80	D	17	83.2
02/17/2017 9:36	AAL1405	MD80	D	17	82.5
02/16/2017 15:03	AAL1409	MD80	D	17	82.1
02/26/2017 9:32	AAL1405	MD80	D	17	81.4
02/14/2017 12:11	DAL2836	MD80	A	35	81
02/03/2017 19:45	AAL2201	MD80	D	17	80.7
02/26/2017 7:23	AAL1507	MD80	D	17	80.5
02/05/2017 14:58	SCX378	B7377	A	35	80.4
02/19/2017 19:34	AAL2201	MD80	D	17	80.1

(RMT Site#36)

Briar Oaks & Scout Pond, Apple Valley

Date/Time	Flight Number	Aircraft Type	Arrival/ Departure	Runway	Lmax(dB)
02/23/2017 17:44	FDX798	MD11	A	35	81.9
02/17/2017 19:30	AAL2201	MD80	D	17	80.2
02/24/2017 8:31	AAL1405	MD80	A	35	80.2
02/22/2017 17:11	FDX798	MD11	A	35	79.6
02/24/2017 5:31	FDX1407	MD11	A	35	79.5
02/22/2017 18:02	DAL1752	B717	A	35	79.3
02/22/2017 17:35	SCX548	B738	A	35	78.9
02/24/2017 8:48	BMJ74	BE80	A	35	78.7
02/24/2017 17:58	FDX715	MD11	A	35	78.4
02/22/2017 18:15	FDX715	MD11	A	35	78.3

# Top Ten Loudest Aircraft Noise Events for MSP

February 2017

(RMT Site#37)

4399 Woodgate Ln. N., Eagan

Date/Time	Flight Number	Aircraft Type	Arrival/ Departure	Runway	Lmax(dB)
02/17/2017 9:36	AAL1405	MD80	D	17	83.5
02/19/2017 14:39	AAL1409	MD80	D	17	83.3
02/16/2017 15:03	AAL1409	MD80	D	17	83
02/16/2017 9:40	AAL1405	MD80	D	17	82.2
02/09/2017 14:51	AAL1409	MD80	D	17	81.7
02/15/2017 19:28	AAL2201	MD80	D	17	81.5
02/20/2017 9:33	AAL1405	MD80	D	17	81.5
02/06/2017 19:44	AAL2201	MD80	D	17	80.5
02/28/2017 9:33	AAL1405	MD80	D	17	79.9
02/16/2017 16:16	AAL46	MD80	D	17	79.6

(RMT Site#38)

3957 Turquoise Cir., Eagan

Date/Time	Flight Number	Aircraft Type	Arrival/ Departure	Runway	Lmax(dB)
02/16/2017 15:37	DAL1264	MD80	D	17	85.8
02/19/2017 9:43	DAL1454	MD80	D	17	85.7
02/21/2017 19:27	AAL2201	MD80	D	17	84.9
02/16/2017 16:15	AAL46	MD80	D	17	83.9
02/20/2017 16:17	AAL46	MD80	D	17	83.8
02/21/2017 14:29	AAL1409	MD80	D	17	83.5
02/19/2017 9:51	AAL1405	MD80	D	17	83.4
02/16/2017 9:40	AAL1405	MD80	D	17	83.4
02/20/2017 9:33	AAL1405	MD80	D	17	83.2
02/06/2017 10:35	DAL1900	MD80	D	17	83

(RMT Site#39)

3477 St. Charles Pl., Eagan

Date/Time	Flight Number	Aircraft Type	Arrival/ Departure	Runway	Lmax(dB)
02/04/2017 15:52	DAL53	MD80	D	17	89
02/06/2017 7:11	DAL1996	MD80	D	17	88.3
02/20/2017 15:27	DAL968	MD80	D	17	87.6
02/04/2017 8:50	DAL1260	MD80	D	17	86.9
02/17/2017 12:03	DAL1629	MD80	D	17	86.6
02/16/2017 13:45	DAL1682	MD80	D	17	86.5
02/21/2017 15:30	DAL968	MD80	D	17	86.3
02/21/2017 6:43	DAL1582	MD80	D	17	86.1
02/10/2017 7:12	DAL1996	MD80	D	17	85.9
02/21/2017 15:41	DAL1399	MD80	D	17	85.4

## February 2017 Remote Monitoring Tower Top Ten Summary

The top ten noise events and the event ranges at each RMT for February 2017 were comprised of 82.8% departure operations. The predominant top ten aircraft type was the MD80 with 53.4% of the highest Lmax events.

## February 2017 Technical Advisor Report Notes

Unknown fields are due to unavailability of these details in the flight tracking data.

# Analysis of Aircraft Noise Events DNL February 2017

## Remote Monitoring Towers

Date	#1	#2	#3	#4	#5	#6	#7	#8	#9	#10	#11	#12	#13	#14	#15
02/01/17	40.7	50	52.7	56.3	65.3	64	61	54.2	NA	NA	NA	NA	32.3	57.3	40.1
02/02/17	45.3	48.5	52.6	56.1	64.6	65.6	60.6	54.9	NA	NA	NA	NA	NA	56	38.5
02/03/17	47.5	51.2	56	56.8	64.6	65.5	59.5	54.4	NA	NA	NA	NA	NA	57.3	31.9
02/04/17	52.6	54.4	59.9	55.1	64.7	61.5	49.4	48.8	31.1	NA	NA	40.6	49.5	60.8	52.9
02/05/17	51.6	52.9	59.8	54.1	67.5	63.7	62.6	51.3	NA	NA	NA	NA	47.2	54.2	48.9
02/06/17	58.7	60.3	64.9	60.5	69.1	65.4	39.5	37.2	NA	NA	NA	NA	56.5	61.8	57.6
02/07/17	48.6	50.2	55.3	54.3	64.8	66.7	61.4	56.3	NA	NA	NA	NA	35.5	58.5	29.5
02/08/17	43.1	46.8	52.1	54.5	64.1	64.3	60	53.8	40.8	44.7	NA	53.8	NA	55.5	NA
02/09/17	53.1	54.9	61.4	56.5	67.1	65.5	58.3	52.3	NA	NA	NA	NA	52.4	55.8	55.7
02/10/17	57.7	57.5	63.4	58.9	68.2	67.3	55.7	56.4	43.6	36.5	NA	44.6	53.6	62.4	53.2
02/11/17	50.7	51.1	56.7	53.3	66.7	65	62.6	54.5	NA	NA	NA	NA	50.8	60.8	51.6
02/12/17	47.6	50.8	56	56.5	66	66.1	61.4	55.4	NA	NA	NA	NA	NA	59.4	NA
02/13/17	49.7	52.1	56.9	56.1	63.6	66.1	58.8	56.6	40.3	NA	NA	NA	47.9	60.9	47.6
02/14/17	47	49.5	55	55.7	66.7	65.7	63.5	56.1	35.4	39.1	NA	NA	NA	62.2	31.2
02/15/17	52.4	54.5	59.2	57	67.1	66.5	62	55.1	NA	NA	NA	38.5	54.4	58.6	55.3
02/16/17	60.5	62.5	66.5	62.6	69.9	68.1	43.2	45.2	NA	NA	NA	47.4	58.2	61.5	59.9
02/17/17	58.3	60.7	64.2	61.4	67.3	68.8	55.8	54.5	NA	NA	NA	27.8	54.9	64.9	55.6
02/18/17	46.4	48.4	51	54.7	60.4	64.6	55.3	56.6	NA	NA	NA	NA	NA	60.7	NA
02/19/17	59.3	58.8	66.6	59.3	69.8	64.9	49.2	NA	NA	NA	NA	NA	54.7	59.8	56.1
02/20/17	57.9	59.5	65.4	60.1	69	67.9	56.5	55.1	NA	NA	NA	NA	55.7	63	58.2
02/21/17	55.8	59.1	62.5	60.2	67.5	67.5	56	54.8	NA	NA	NA	NA	56	61	58.2
02/22/17	56.5	56.5	64.1	61.4	70.5	69	61.9	59	NA	NA	NA	39.7	42.5	62.1	40.1
02/23/17	52	53.9	60.2	60.5	68.7	70.8	65.7	59.5	NA	NA	NA	27.4	48.5	61.1	47
02/24/17	50.3	53.5	58.4	57.6	67.2	67.7	65.2	56.6	NA	43.6	NA	NA	NA	58.7	NA
02/25/17	44.3	47.7	52.6	54.9	64.9	65.3	61.8	57.3	NA	NA	NA	NA	NA	58	NA
02/26/17	48.5	53.3	55.7	58	64.9	67.2	58.4	56.8	NA	NA	NA	NA	NA	58.6	NA
02/27/17	58.8	58.9	65.8	59	69.2	64.8	43.8	NA	NA	NA	NA	NA	55.8	63.6	60.1
02/28/17	58.2	55.5	65.8	59.7	71	70.1	64	61.4	NA	NA	NA	NA	48.8	59.7	47.7
<b>Mo.DNL</b>	<b>54.8</b>	<b>56.1</b>	<b>61.8</b>	<b>58.3</b>	<b>67.4</b>	<b>66.7</b>	<b>60.5</b>	<b>55.9</b>	<b>40.1</b>	<b>42.1</b>	<b>N/A</b>	<b>46.5</b>	<b>53.3</b>	<b>60.5</b>	<b>54.5</b>

\*Note: Remote Monitoring Terminal (RMT) #11 in St. Paul is being relocated and temporarily disassembled due to construction on the property where the RMT was located. As a result, data for RMT 11 are not available beyond July 17, 2016.



# Analysis of Aircraft Noise Events DNL February 2017

## Remote Monitoring Towers

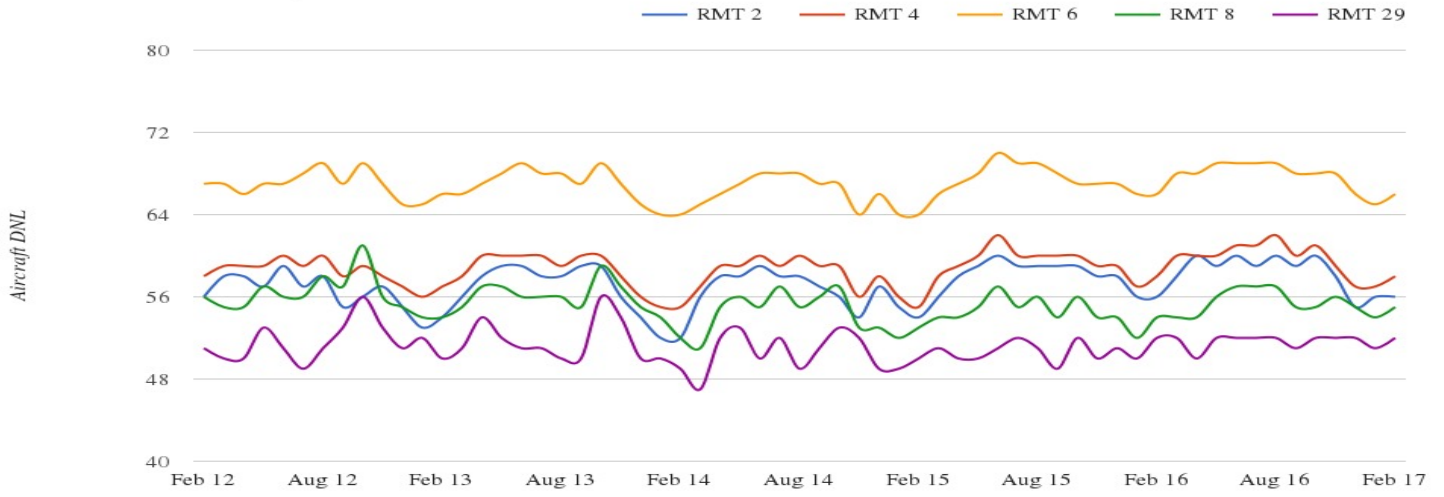
Date	#16	#17	#18	#19	#20	#21	#22	#23	#24	#25	#26	#27	#28	#29
02/01/17	63.7	NA	40.8	35.5	27.6	NA	54.6	47.3	58.2	36	52.6	68.2	58.1	51.8
02/02/17	63.5	37.6	43.6	NA	43.1	NA	53.8	43.6	57.4	35.7	33	53.5	55.3	54.5
02/03/17	64.2	40	47.9	47	46.9	27.1	55.1	44.5	59.1	NA	46	50.7	55.5	51.7
02/04/17	63.7	NA	52.4	45.5	NA	33.8	56.1	56.9	59	47.2	51.3	39.5	49.9	43.8
02/05/17	59	NA	43.2	39	33.5	42	51.2	53.4	53.7	35.7	46.8	56.2	54.5	46.3
02/06/17	63.3	38.8	55.6	51.3	31	42.1	51.5	62.7	58.5	53.6	52.8	41.3	56.6	NA
02/07/17	64.5	35.1	40.7	NA	44.9	NA	57	49.9	59.1	31.3	42	54.3	58.1	54.9
02/08/17	63.9	NA	33	NA	33.8	NA	52.6	28.4	57.5	NA	34.8	54	51.3	53.2
02/09/17	61.6	36.1	49.4	41.8	35.7	34.9	51	59.2	54.8	42.7	40	48.7	52.8	49.6
02/10/17	64.7	42.8	54	51.1	39.7	45.5	58.6	60.3	61.1	53.1	57.8	48.6	54	54.3
02/11/17	65.8	44.4	49.9	47.2	46.8	44.1	59.4	56.5	61.5	39.2	44.1	56.6	55.8	50.7
02/12/17	64.7	40.3	29.7	NA	43.3	27.7	57.7	40.9	59.7	NA	32.2	56.2	57.1	54.2
02/13/17	66.6	50.5	55.6	50.1	50.4	37.6	59.3	53.5	61.5	49.2	46.9	50.2	56.7	54.5
02/14/17	68.5	41.5	41.3	NA	43.8	39.5	59	38.6	61.8	NA	39.9	57.4	58.6	53.8
02/15/17	63.3	34.4	46.4	41.1	NA	44.4	55.8	60	58.3	43.7	46.4	55.5	55.3	51.5
02/16/17	62.3	NA	58.6	54.7	NA	46.5	53	65	58.7	54.2	57.1	31.7	57.7	NA
02/17/17	67.5	NA	55.1	51.7	37.7	46.1	58.3	61.9	62.9	54.2	53.4	49.8	55.9	52.7
02/18/17	65.9	46.2	53.1	55	47.1	NA	59.4	33.3	61.1	44.6	28.9	48	51	49.7
02/19/17	61.2	NA	57.1	53.1	NA	47.8	51.6	60.2	56.3	51.3	52.2	52.3	59.8	NA
02/20/17	65	NA	57.8	51.8	NA	46.9	54.8	62.1	59.8	52	54.5	45	58.6	48
02/21/17	65.8	NA	57.7	52.2	NA	44	57.7	61.3	60.1	53.1	47.2	57.1	54.7	47.9
02/22/17	64.8	41.1	43.8	44	44	31.8	58	56.2	60.8	42.2	52.8	60.6	57.6	56.7
02/23/17	65.8	NA	42.5	NA	43.7	41.3	59.9	53.9	61.1	46.5	45.6	59.2	58.3	54.1
02/24/17	65.3	NA	38	NA	42.6	39.9	58.1	34.4	59.4	37.6	36.5	59.8	59.9	54.4
02/25/17	63.9	35.4	42.5	37.9	39.1	NA	57.3	NA	59	NA	42.5	55.3	55.2	52.3
02/26/17	64.4	42.8	53.3	48.7	44.4	NA	58.3	33.8	60.1	NA	35	57.8	53	53.2
02/27/17	64	NA	54.4	49.3	NA	50.1	53.7	63.1	60.4	54.3	55.8	43	51.2	NA
02/28/17	64.2	NA	50.2	46.2	39.6	41.9	57.2	54.8	59.4	49	47.4	60.8	58.2	52.6
<b>Mo.DNL</b>	<b>64.7</b>	<b>42.9</b>	<b>52.6</b>	<b>49.9</b>	<b>43.7</b>	<b>43.8</b>	<b>56.9</b>	<b>58.3</b>	<b>59.7</b>	<b>49.8</b>	<b>50.7</b>	<b>57.6</b>	<b>56.5</b>	<b>52.8</b>

# Analysis of Aircraft Noise Events DNL February 2017

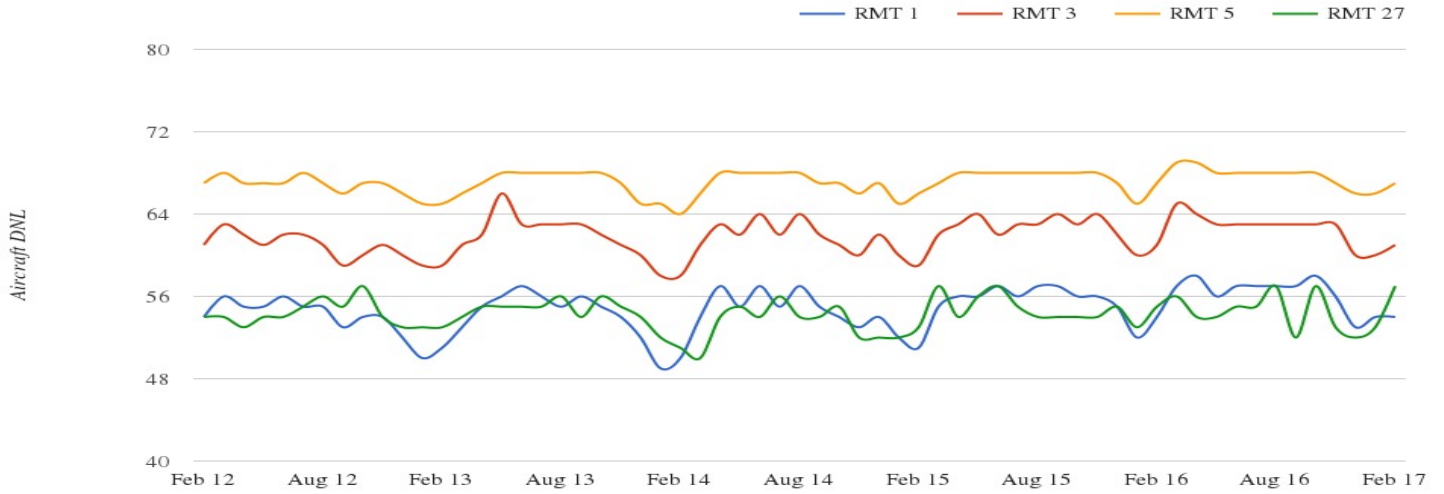
## Remote Monitoring Towers

Date	#30	#31	#32	#33	#34	#35	#36	#37	#38	#39
02/01/17	39	NA	NA	39.5	29.7	43.8	47	NA	NA	NA
02/02/17	40.7	NA	NA	NA	NA	47.6	47.5	28.2	NA	NA
02/03/17	60.2	43.7	27.2	44.1	41.1	50.6	41.8	44.8	44.2	NA
02/04/17	58.7	44.5	34	43.2	31.4	44.8	37.6	44	49.5	52.2
02/05/17	50.8	NA	NA	36.7	NA	44.6	47.4	39.6	44.8	44.8
02/06/17	62.1	45	32	48.6	37.9	48.7	34.1	49.3	54.6	55.5
02/07/17	44.2	NA	NA	NA	NA	44.5	46.7	NA	NA	NA
02/08/17	36.4	NA	NA	NA	NA	41.9	45.9	NA	NA	NA
02/09/17	57.8	43.1	36.7	41.1	35	43.8	39.4	44.6	47.4	47.4
02/10/17	62	45.2	41	52.3	48.4	53.8	48.6	46.1	49	52.7
02/11/17	60.2	47.5	43.9	49.7	46.3	49.4	45.3	33	36.8	42
02/12/17	39.5	NA	29.2	NA	NA	42.2	45	NA	NA	NA
02/13/17	63.4	49.1	44.2	51.3	46.5	55.7	48.3	53.4	50.3	46
02/14/17	42.7	39.9	38.3	NA	NA	47	49.7	NA	NA	NA
02/15/17	54.3	39.4	39.9	41.5	33.5	44.9	48.6	42.9	46.8	46.2
02/16/17	63.4	52.1	40.4	48.8	40.5	48.8	34.6	50.8	55.8	57.3
02/17/17	62	41.7	32	49.9	44	49.3	44.2	49.2	53.9	54.8
02/18/17	66.9	47.8	42.9	54.5	54.9	58.3	54.7	NA	NA	NA
02/19/17	62.2	50.9	42.5	44.3	36.1	48.5	33.1	50.7	54.1	53.9
02/20/17	61.5	47	38.5	47.3	41.1	51	38.5	49.1	53.9	57
02/21/17	62.4	46.7	44.5	49.2	39.5	48.5	32.5	51.4	55.3	58.2
02/22/17	56.8	42.3	38.4	46.7	46.6	49.7	53.4	NA	NA	NA
02/23/17	45.8	NA	NA	NA	NA	48.5	51.9	29.5	NA	NA
02/24/17	51.4	NA	NA	NA	NA	54.3	58.1	NA	NA	NA
02/25/17	51.9	39.9	35.6	36.4	31.6	48.3	51.1	35.5	31.4	NA
02/26/17	62.4	46.4	44.8	49.7	48.7	56.8	52.7	48.4	48.2	NA
02/27/17	60.3	46.6	36.9	46.8	38.4	45	NA	47.3	51.7	54.3
02/28/17	57.4	40.2	NA	42.5	28.5	49.5	52.2	46.5	49.7	45.1
<b>Mo.DNL</b>	<b>59.8</b>	<b>46.4</b>	<b>40.4</b>	<b>48.2</b>	<b>45.3</b>	<b>50.8</b>	<b>49.7</b>	<b>47.7</b>	<b>51.4</b>	<b>53.6</b>

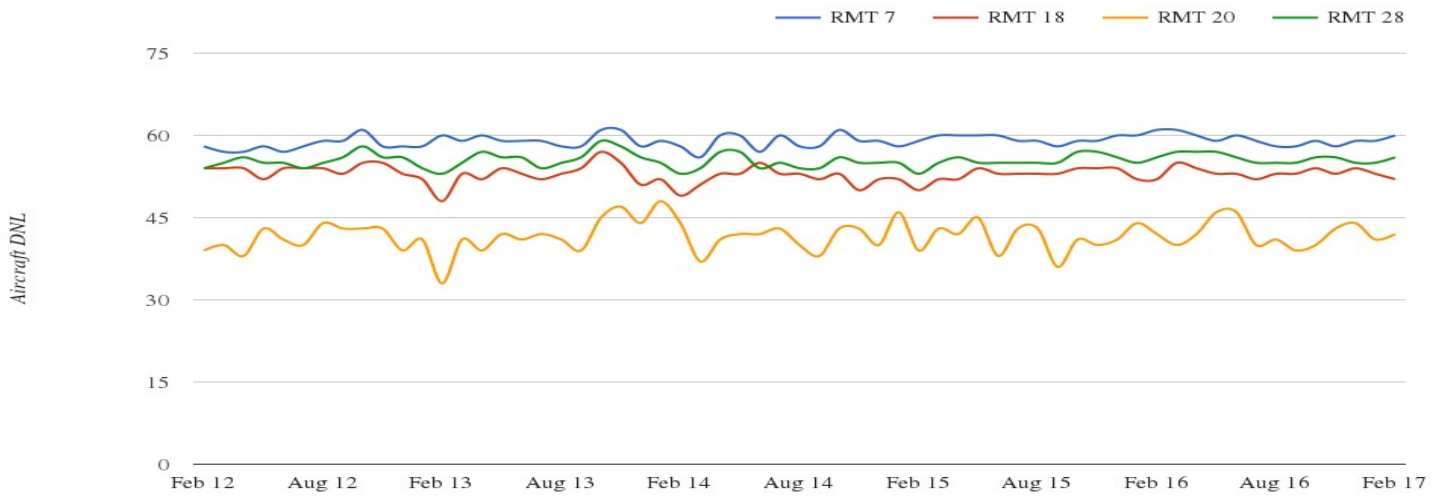
### Minneapolis 12L/30R



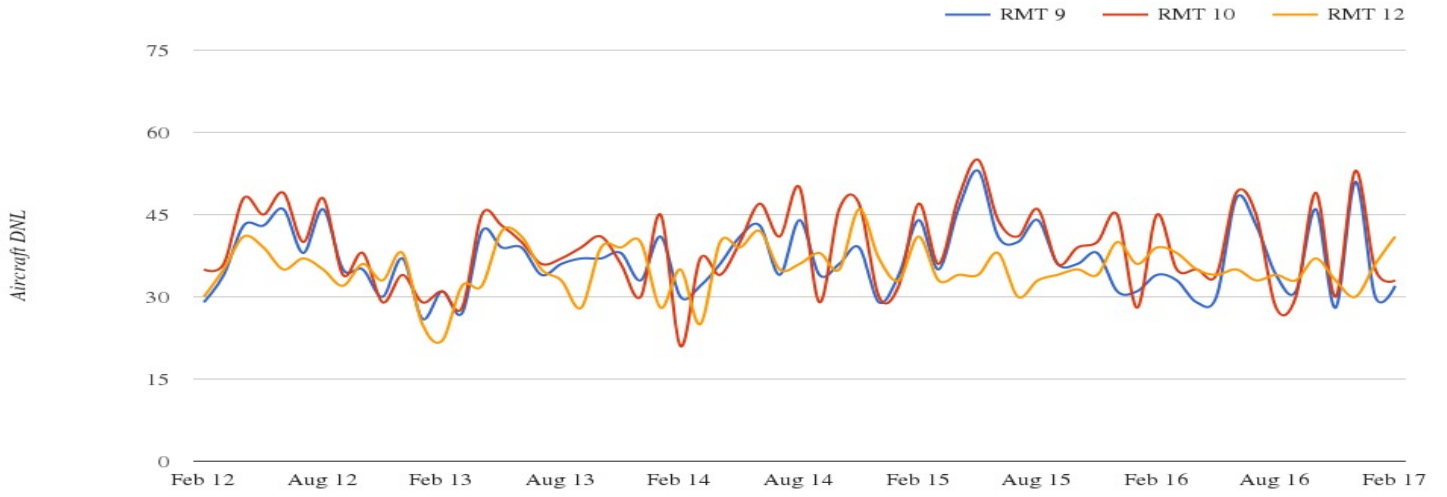
### Minneapolis 12R/30L



### Richfield



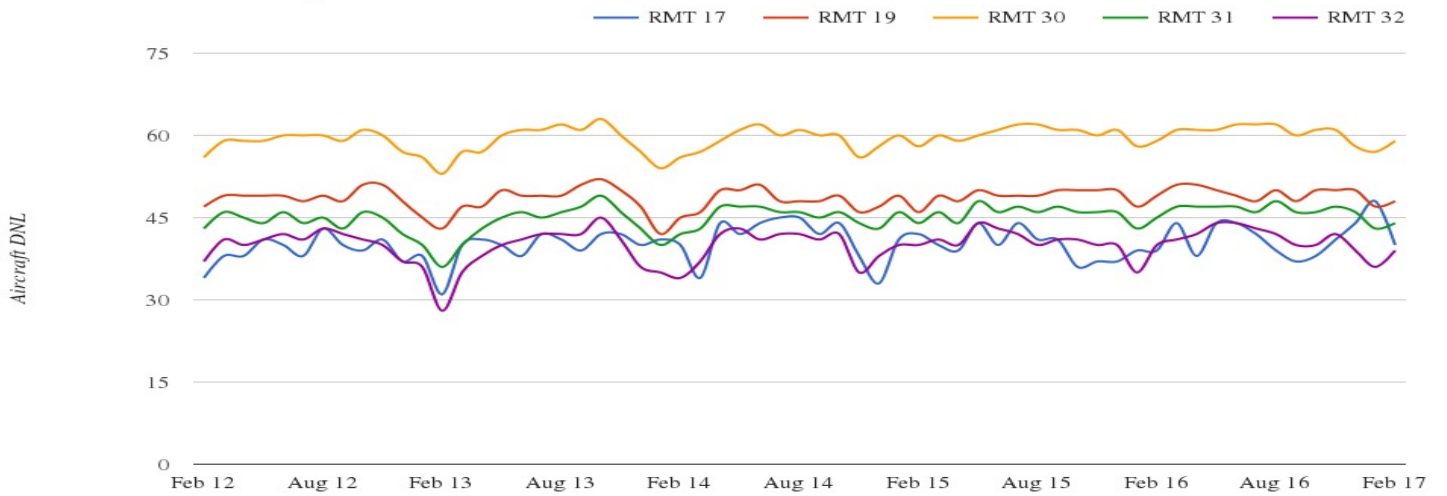
### St. Paul



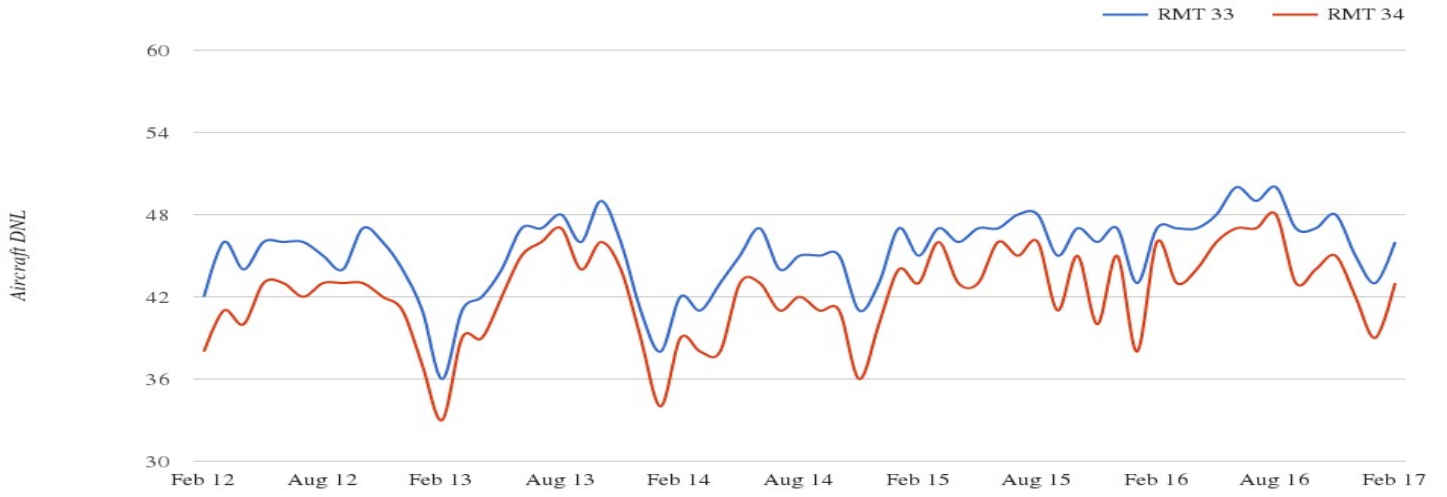
### Mendota Heights



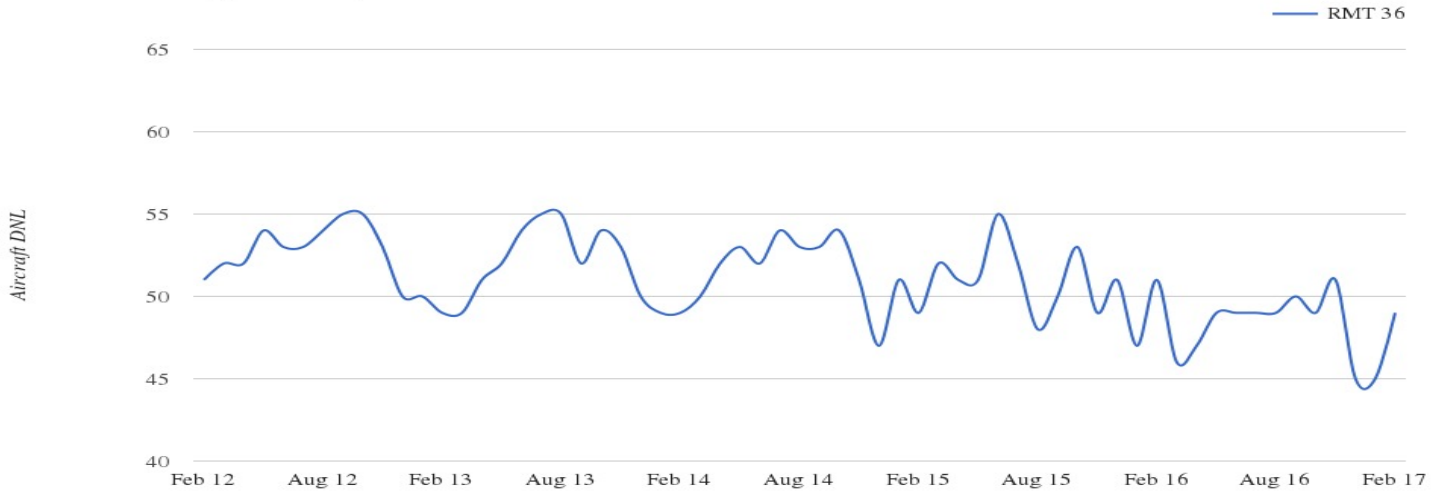
### Bloomington



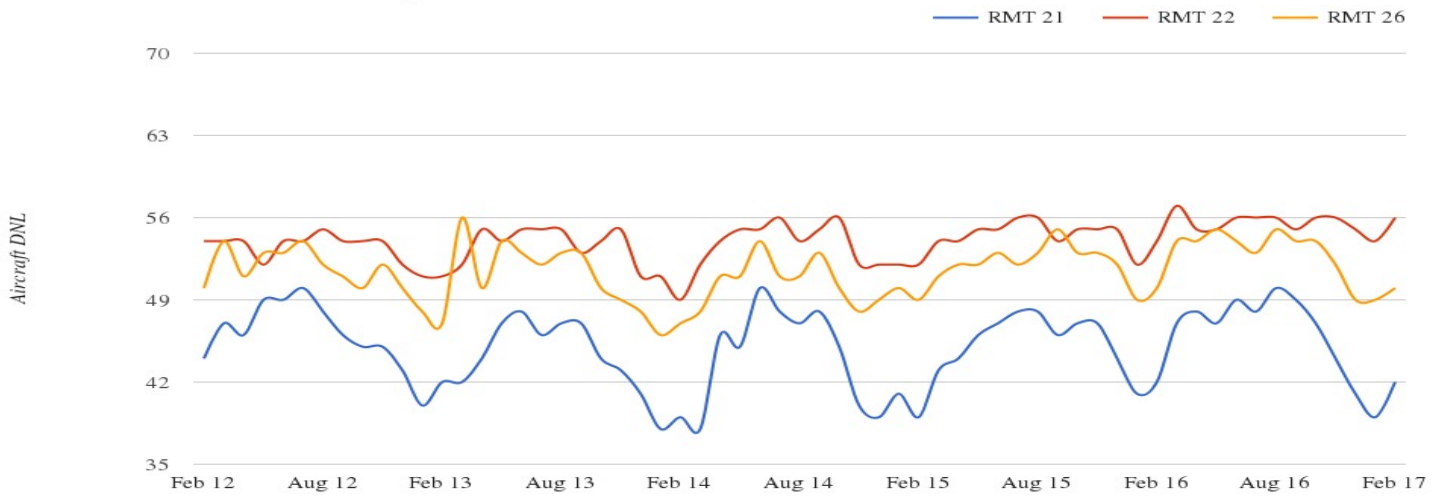
### Burnsville



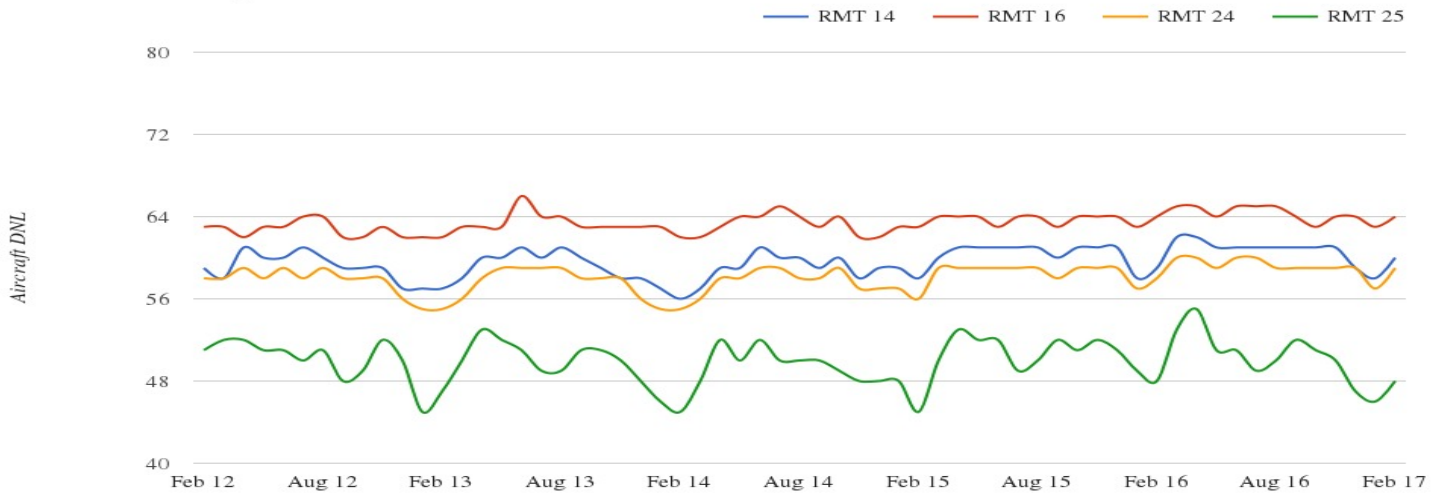
### Apple Valley



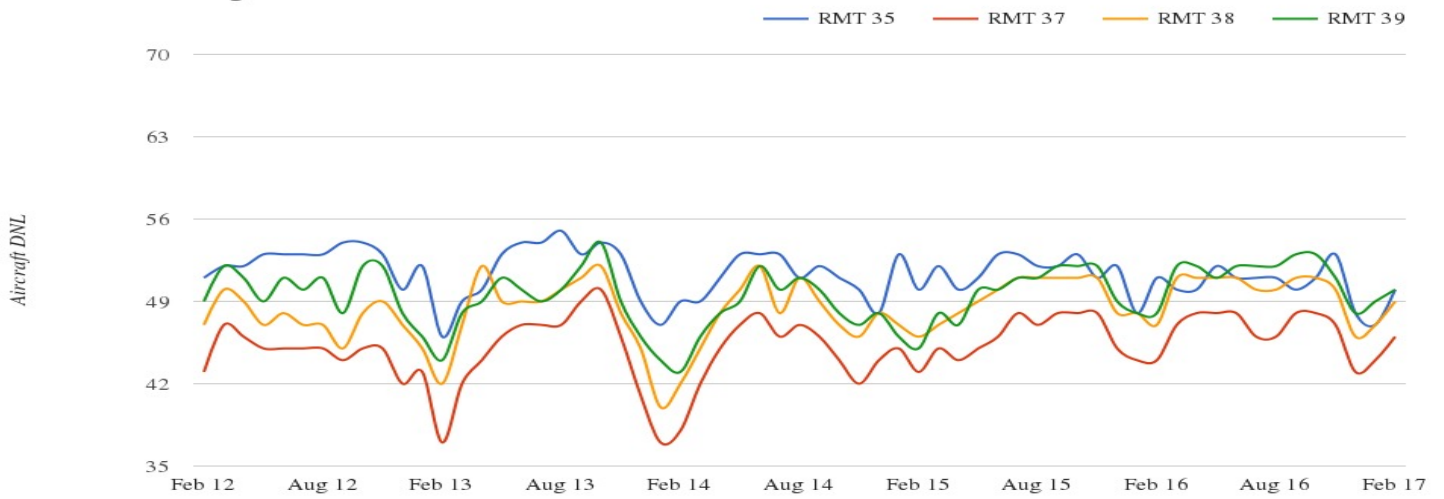
### Inver Grove Heights



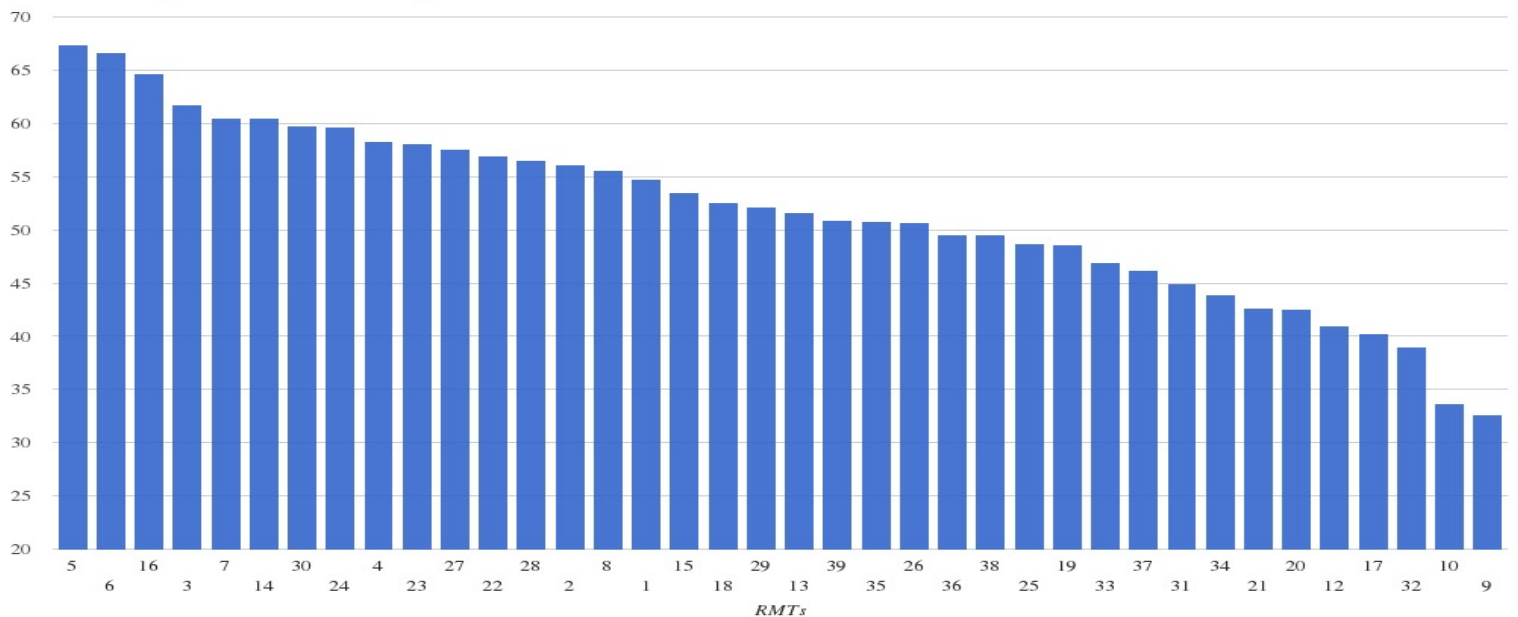
### Eagan 12/30



### Eagan 17/35



### February 2017 DNL Values per RMT



\*Note: Remote Monitoring Terminal (RMT) #11 in St. Paul is being relocated and temporarily disassembled due to construction on the property where the RMT was located. As a result, data for RMT 11 are not available beyond July 17, 2016.