



Lake Elmo Airport

CONSTRUCTION NEWS



Learn More:

Project newsletters including construction updates and photos will be posted regularly during construction on the airport website.

metroairports.org/general-aviation/airports/lake-elmo/lake-elmo-airport-construction

Long Term Comprehensive Plan (LTCP):

metroairports.org/general-aviation/airports/lake-elmo-airport

Environmental Assessment/Environmental Assessment Worksheet (EA/EAW):

metroairports.org/general-aviation/airports/lake-elmo/lake-elmo-environmental-assessment/documents-and-links

If you have questions about the project, please contact us via email at ContactLakeElmoAirportEA@mspmac.org

PROJECT UPDATE:

Construction activities for Phase 2 of the runway replacement project in the month of September included runway earthwork grading, placement of select granular borrow and aggregate base in the runway and taxiway pavement sections, and topsoil placement in the future turf areas. Stormwater filtration Basin 1 was constructed, and edge lighting electrical cans and conduit were also set for future taxiway lights.

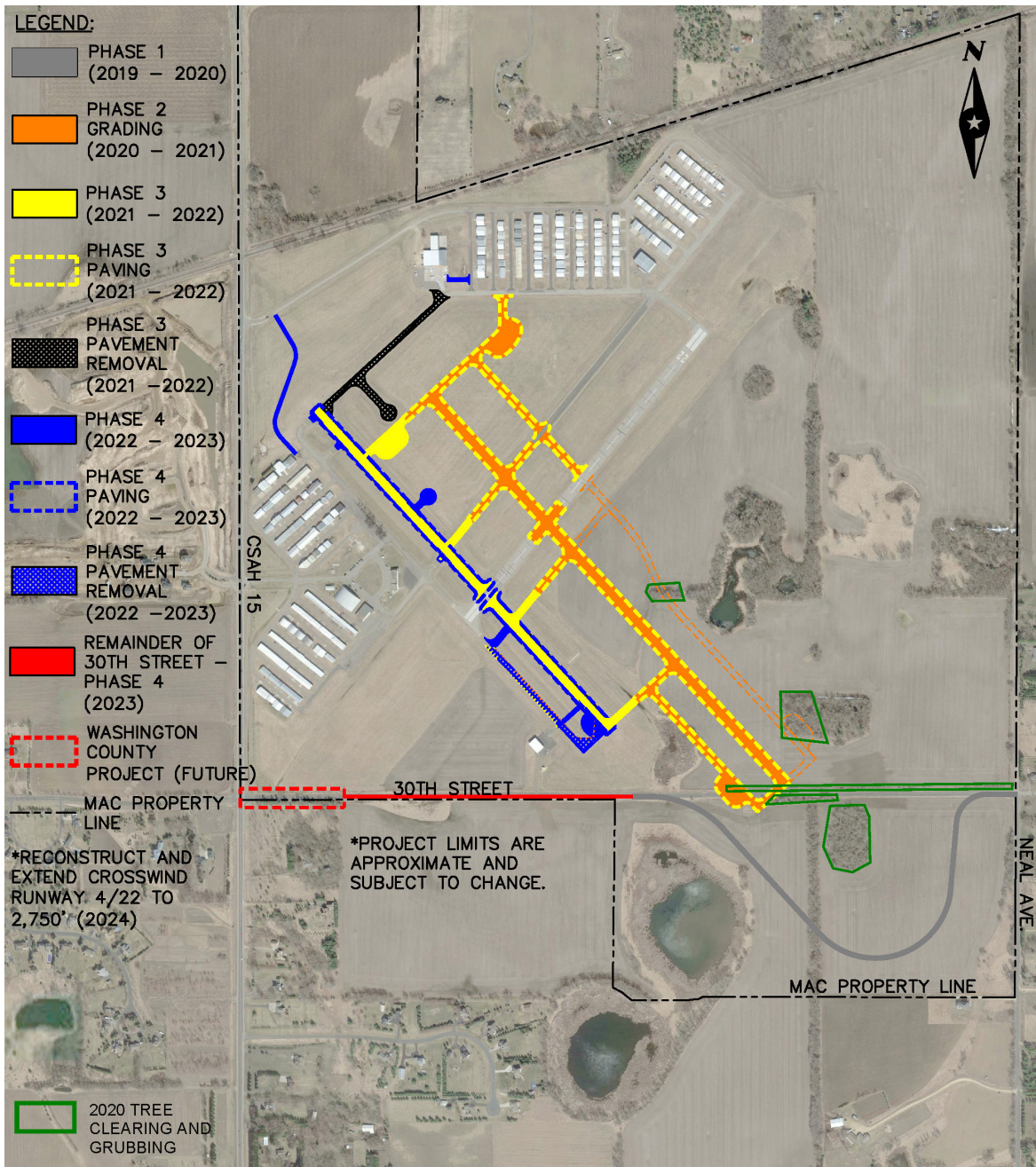
Final earthwork grading operations will continue and are expected to be complete in the month of October. Topsoil was spread over areas once final grade was established to facilitate turf establishment. Final import and grading of the select granular along with aggregate base was completed in September. Once the aggregate base final grade was achieved, the aggregate was prepared for paving.

Stormwater features were also installed including the French drain and stormwater filtration Basin 1. The French drain was constructed using perforated draitile that was surrounded by coarse aggregate, then wrapped in fabric. Then, a three inch layer of crushed limestone was placed over the draitile. This was installed to help facilitate and convey stormwater runoff to the filtration basin. Basin 1 was constructed in a similar manner with perforated draitile wrapped with coarse aggregate and filter topsoil borrow media placed over the draitile. This area is designed to capture stormwater in a basin which will then be filtered through the media making its way into the draitile before it will be stored on site in stormwater retention ponds where it will evaporate.

Taxiway electrical light base cans were installed along with the associated underground conduit. Lights and circuitry will be installed during a later phase.

Remaining work items include paving, final site grading, and turf establishment. Seeding and final site stabilization will occur before winter. It is expected that all Phase 2 work items will be complete mid to late October, weather permitting.

Phase 3 construction is scheduled to follow after the completion of Phase 2. A new airfield electrical vault building will be constructed near the existing MAC maintenance facility and is expected to begin this fall. The remainder of Phase 3 work items will begin in the Spring of 2022.



PROJECT SCHEDULE

phase 1

Realign 30th Street N
Substantially complete.

Punchlist items and project close-out in process.

phase 2

Runway 14/32 Replacement & Airfield Modifications
Fall 2020 through Summer 2021

Construction grading of new runways and taxiways.

phase 3

Runway 14/32 Replacement
Fall 2021 through Summer 2022

Completion of new Runway 14/32 and new taxiways.

phase 4

Runway 14/32 Replacement
Fall 2022 through Summer 2023

Completion of taxiway modifications, conversion of existing runway to parallel taxiway, and service roads.