

Construction Notice

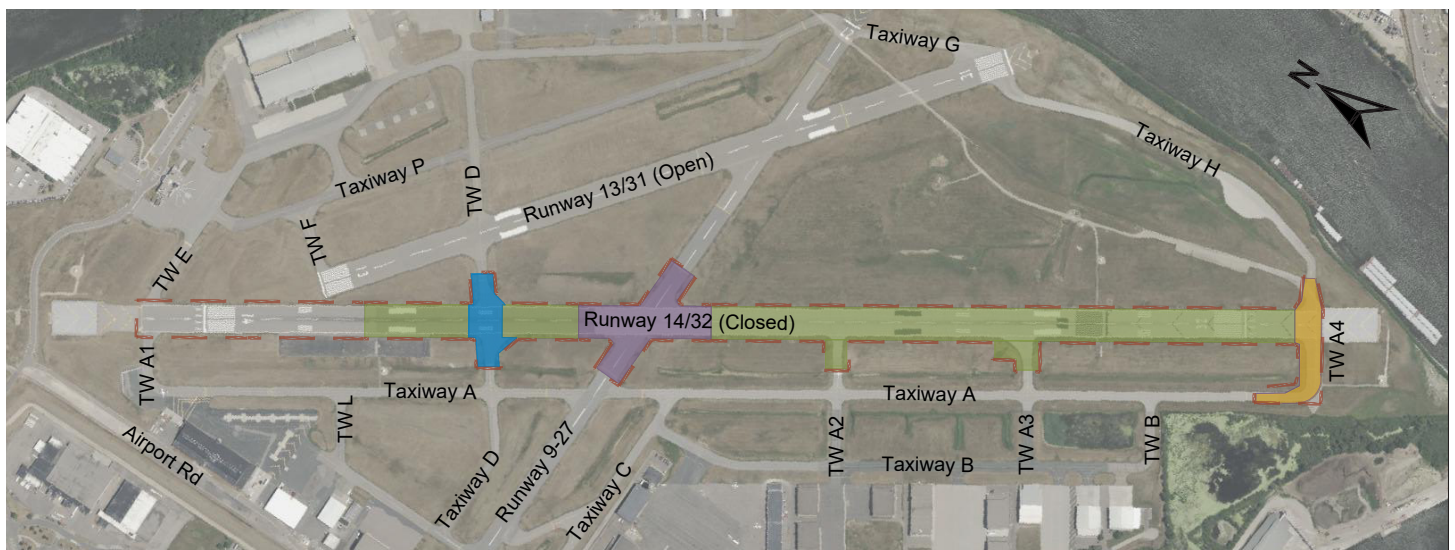
SAINT PAUL DOWNTOWN AIRPORT (HOLMAN FIELD)

2025 RUNWAY 14/32 RECONSTRUCTION

Project Background

The Metropolitan Airports Commission (MAC) will be completing the reconstruction of Runway 14/32 at STP this summer. The proposed project will include removing the existing pavement section, which was originally installed in the 1980's. A new pavement section consisting of bituminous pavement, aggregate base, and geotextile fabric will be installed. Other project elements include lighting modifications, draitile rehabilitation, pavement markings, and sawcut grooving.

This project will begin on June 2nd, 2025, with a scheduled completion date of August 9th, 2025. Runway 13/31 will be available for the duration of the project. Runway 9/27 will also be available until the final three weeks of construction.



Schedule

Project is scheduled to occur between June 2nd, 2025 - August 9, 2025

Note: The construction is weather dependent and the dates listed are subject to change if inclement weather conditions occur. Check NOTAMs daily.



Construction Impact

- Phase 1 - 54 working days**
 - Closures: Runway 14/32, Taxiways A2 & A3.
- Phase 2 - 24 working days (concurrent to Phase 1)**
 - Closures: Runway 14/32, Taxiways A2, A3, D.
- Phase 3 - 18 working days (concurrent to Phases 1 and 2)**
 - Closures: Runway 14/32, Taxiways A2, A3, D, H, A4.
- Phase 4 - 12 working days (concurrent to Phases 1, 2, and 3)**
 - Closures: Runway 14/32, Runway 9/27, Taxiways A2, A3, D, H, A4.
- Phase 5 - 6 working days (commences on working day 55)**
 - Phase includes final paving and pavement markings.
 - Closures: Runway 14/32, Runway 9/27, Taxiways A2, A3, D, H, A4.
- Phase 6 - 12 working days (night closures, 10:00PM - 6:00AM)**
 - Phase includes sawcut grooving.
 - Closures: Runway 14/32 (10:00PM - 6:00AM).
 - 3 of 12 night closures will include closure of Runway 9/27



Contact

Lindsay Reidt, PE
SEH (Engineer)
763.370.4055

Kyle Nelson, PE
SEH (Engineer)
651.900.0016

Blaine Peterson
STP Airport Manager
612.467.0931

Contractor:
Max Steining, Inc.

Runway 14/32 will be closed for construction from June 2, 2025 to estimated August 9, 2025. Runway 14/32 will be unavailable for the duration of the project.

