



Lake Elmo Airport

CONSTRUCTION NEWS

Learn More:

Project newsletters including construction updates and photos will be posted regularly during construction on the airport website.

metroairports.org/general-aviation/airports/lake-elmo/lake-elmo-airport-construction

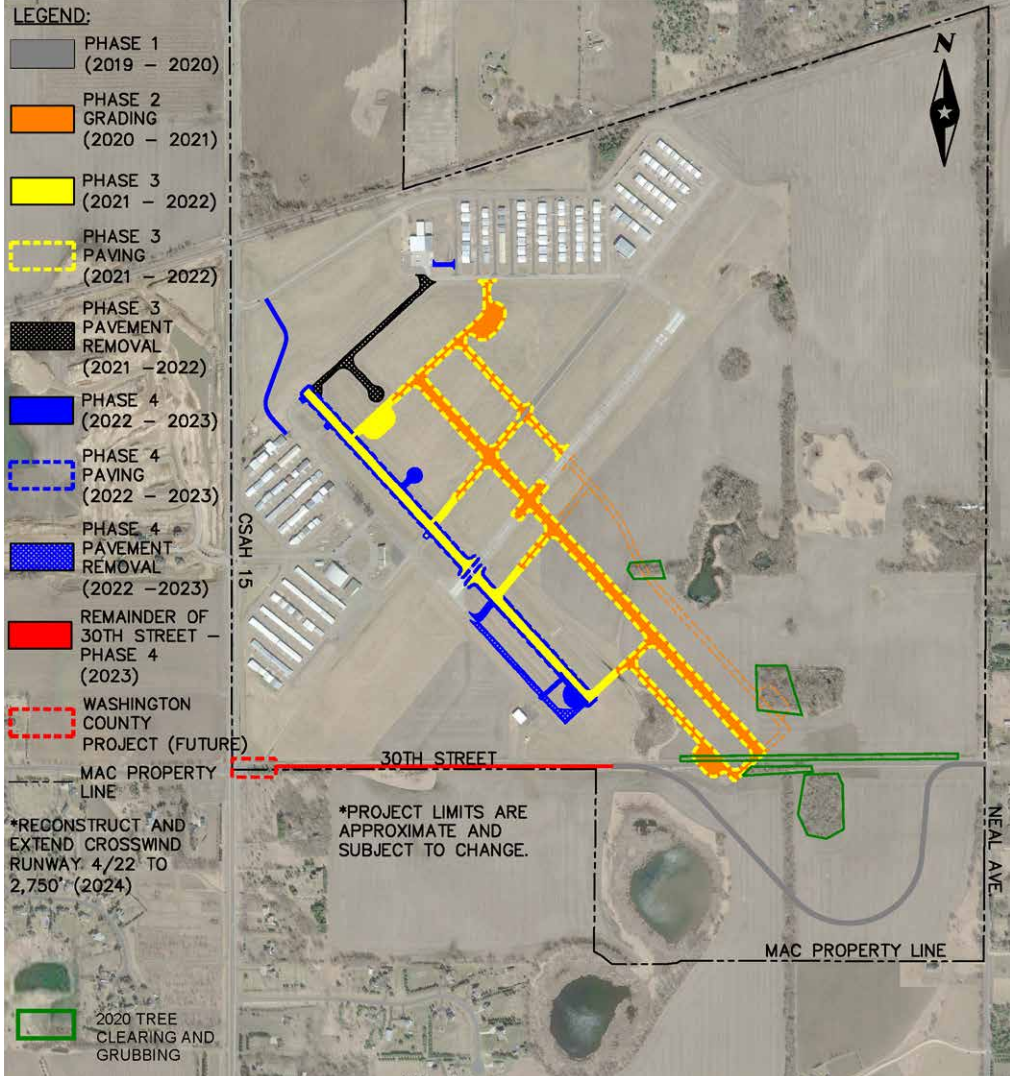
Long Term Comprehensive Plan (LTCP):

metroairports.org/general-aviation/airports/lake-elmo-airport

Environmental Assessment/Environmental Assessment Worksheet (EA/EAW):

metroairports.org/general-aviation/airports/lake-elmo/lake-elmo-environmental-assessment/documents-and-links

If you have questions about the project, please contact us via email at ContactLakeElmoAirportEA@mspmac.org



PROJECT SCHEDULE

phase 1

Realign 30th Street N
Substantially complete.
Punchlist items and project close-out in process.

phase 2

Runway 14/32 Replacement & Airfield Modifications
Fall 2020 through Summer 2021
Construction grading of new runways and taxiways.
Tree clearing scheduled for February 2021.

phase 3

Runway 14/32 Replacement
Fall 2021 through Summer 2022
Completion of new Runway 14/32 and new taxiways.

phase 4

Runway 14/32 Replacement
Fall 2022 through Summer 2023
Completion of taxiway modifications, conversion of existing runway to parallel taxiway, and service roads.