



Lake Elmo Airport

CONSTRUCTION NEWS



Learn More:

Project newsletters including construction updates and photos will be posted regularly during construction on the airport website.

metroairports.org/general-aviation/airports/lake-elmo/lake-elmo-airport-construction

Long Term Comprehensive Plan (LTCP):

metroairports.org/general-aviation/airports/lake-elmo-airport

Environmental Assessment/Environmental Assessment Worksheet (EA/EAW):

metroairports.org/general-aviation/airports/lake-elmo/lake-elmo-environmental-assessment/documents-and-links

If you have questions about the project, please contact us via email at ContactLakeElmoAirportEA@mspmac.org

PROJECT UPDATE:

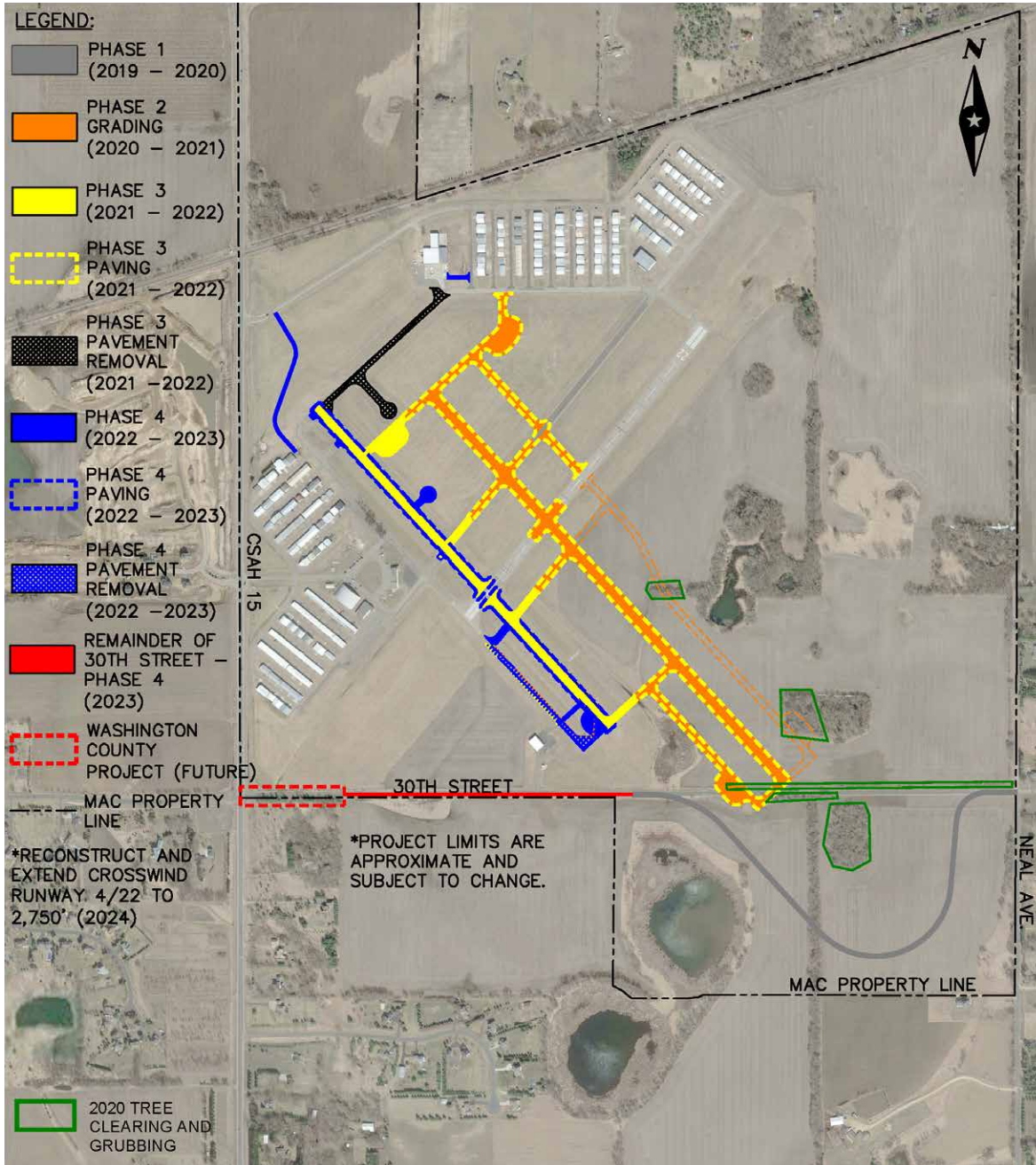
Construction activities for Phase 2 of the runway replacement project in the month of June included, runway grading, installation of storm water basin 1 liner and drain tile, installation of storm water conveyance pipe, placement of granular borrow in the runway, taxiway pavement sections, and seeding.

Earthwork grading operations continued where they left off in May and will continue in July. Topsoil stripping and stockpiling took place initially until grades were established. Once proper grade was achieved, topsoil was then re-spread to facilitate growth in the green space areas. In the pavement sections, topsoil was stripped and on-site granular borrow material was placed, graded, compacted and tested for density. High strength geotextile fabric will be installed above the granular borrow section and select granular borrow will be imported via trucking.

Beginning the week of June 14, Runway 04/22 was closed so equipment was able to cross the pavement and bring excess material from the north side to be placed on the south side. This activity limits the amount of hauling operations needed on the roadways adjacent to the airport. The runway closure is anticipated to take approximately three weeks, closed Monday through Friday.

Concurrent with the runway and taxiway construction, storm water culverts were installed according to the plans. Under drain drain tile and impermeable synthetic liner were installed in Basin 1. An additional section of drain tile was installed above the liner to meet permit requirements for water quality and volume control of storm water.

Once final grade is established in green space areas the topsoil is prepared, fertilized and hydroseeded.



PROJECT SCHEDULE

phase 1

Realign 30th Street N
Substantially complete.
 Punchlist items and project close-out in process.

phase 2

Runway 14/32 Replacement & Airfield Modifications
Fall 2020 through Summer 2021
 Construction grading of new runways and taxiways.

phase 3

Runway 14/32 Replacement
Fall 2021 through Summer 2022
 Completion of new Runway 14/32 and new taxiways.

phase 4

Runway 14/32 Replacement
Fall 2022 through Summer 2023
 Completion of taxiway modifications, conversion of existing runway to parallel taxiway, and service roads.