



Lake Elmo Airport

CONSTRUCTION NEWS



Learn More:

Project newsletters including construction updates and photos will be posted regularly during construction on the airport website.

<https://metroairports.org/lake-elmo-airport-construction>

Long Term Comprehensive Plan (LTCP):

<https://metroairports.org/lake-elmo-ltcp-2035-project-documents>

Environmental Assessment/Environmental Assessment Worksheet (EA/EAW):

<https://metroairports.org/lake-elmo-environmental-assessment-worksheet-2018>

If you have questions about the project, please contact us via email at

ContactLakeElmoAirportEA@mspmac.org

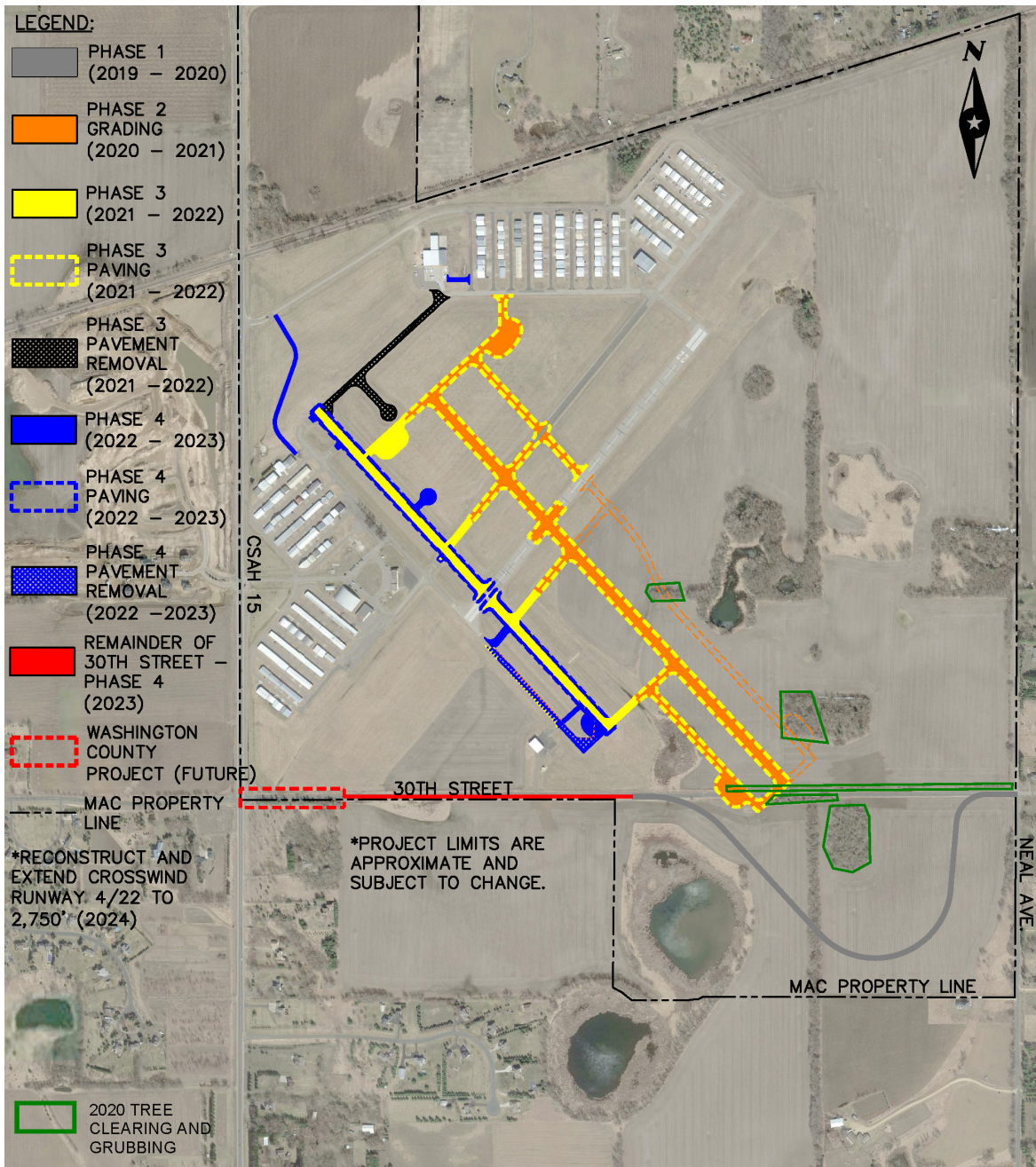
PROJECT UPDATE:

Significant progress has been made on the Runway 14/32 Replacement project throughout the month of June! Early in the month crosswind Runway 4/22 and Taxiway B were closed to allow for construction of the intersections with the new runway. During this time, the contractors prepared the intersection of the runways and taxiways by preparing the subgrade soils and importing select granular and aggregate base. The electrical contractor has also been on-site installing base cans for edge lights and concrete pads for airfield guidance signs.

The last days of June and first days of July will include paving the new runway and adjacent taxiways. This is an important step in the completion of the new runway. Once paving is complete, pavement markings will be added to the runway and taxiways and final grading along the edges will occur prior to opening the new pavements.

When the intersection work is finished, Runway 4/22 and Taxiway B will be re-opened. At that time a portion of the existing northside taxiway will be removed, between the end of Runway 14 and Lake Elmo Aero. After the taxiway pavement has been removed, there will be a short closure of Runway 14/32 so the runway markings can be removed from the existing runway and it will be re-marked as a taxiway. Then new Runway 14/32 will open on July 20th!

Upon completion of the new runway work will continue in the vicinity of the existing runway. This includes installing the storm water features such as basins, ponds, and evaporators. [A fact sheet is available here](#) to learn more about this project's storm water management.



PROJECT SCHEDULE

phase 1

Realign 30th Street N
Complete.
Project close-out in process.

phase 2

Runway 14/32 Replacement & Airfield Modifications
Substantially complete.
Punchlist items and project close-out in process.

phase 3

Runway 14/32 Replacement
Fall 2021 through Summer 2022
Completion of new Runway 14/32 and new taxiways.

phase 4

Runway 14/32 Replacement
Fall 2022 through Summer 2023
Completion of taxiway modifications, conversion of existing runway to parallel taxiway, and service roads.