



Lake Elmo Airport

CONSTRUCTION NEWS



Learn More:

Project newsletters including construction updates and photos will be posted regularly during construction on the airport website.

<https://metroairports.org/lake-elmo-airport-construction>

Long Term Comprehensive Plan (LTCP):

<https://metroairports.org/lake-elmo-ltcp-2035-project-documents>

Environmental Assessment/Environmental Assessment Worksheet (EA/EAW):

<https://metroairports.org/lake-elmo-environmental-assessment-worksheet-2018>

If you have questions about the project, please contact us via email at

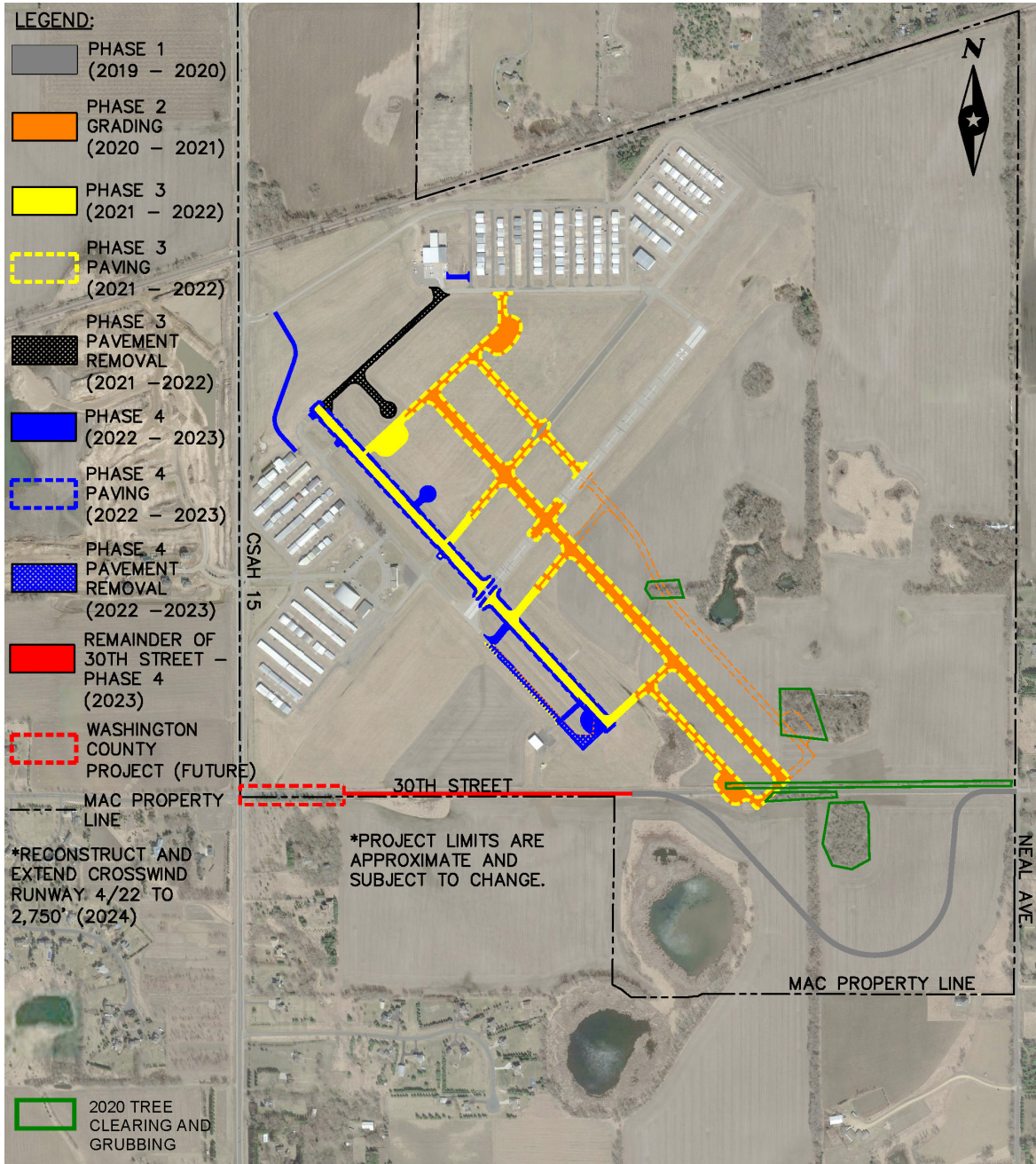
ContactLakeElmoAirportEA@mspmac.org

PROJECT UPDATE:

Significant progress has been made on the Runway 14/32 Replacement project throughout the month of July. The focus for construction this past month has been in anticipation of the new runway opening. The new runway and taxiways were paved and marked. All green spaces and edges adjacent to opening pavements were graded and seeded prior to the opening of the new runway. On July 20th the new Runway 14/32 was opened to air traffic and the existing Runway 14/32 was converted to Taxiway Echo.

The month of August and into the first weeks of September will be spent working on grading related to storm water management. Basin 4 along with Pond 1 will be the priority. Installation of pond and basin liners is anticipated to start mid-August. Once complete an evaporator will be placed in Pond 1 with the remaining evaporators being installed in the spring. [A fact sheet is available here](#) to learn more about this project's storm water management.

Work items for the remainder of summer and into the fall include constructing the North Service Road through aggregate base, and connecting Taxiway Charlie and F2 to Taxiway Echo. Once these connectors are opened, Taxiway Bravo will be reconstructed at the Taxiway Echo intersection. It is also anticipated that the Runway 32 PAPI will be installed in mid to late September.



PROJECT SCHEDULE

phase 1

Realign 30th Street N
Complete.
Project close-out in process.

phase 2

Runway 14/32 Replacement & Airfield Modifications
Substantially complete.
Punchlist items and project close-out in process.

phase 3

Runway 14/32 Replacement
Fall 2021 through Summer 2022
Completion of new Runway 14/32 and new taxiways.

phase 4

Runway 14/32 Replacement
Fall 2022 through Summer 2023
Completion of taxiway modifications, conversion of existing runway to parallel taxiway, and service roads.