

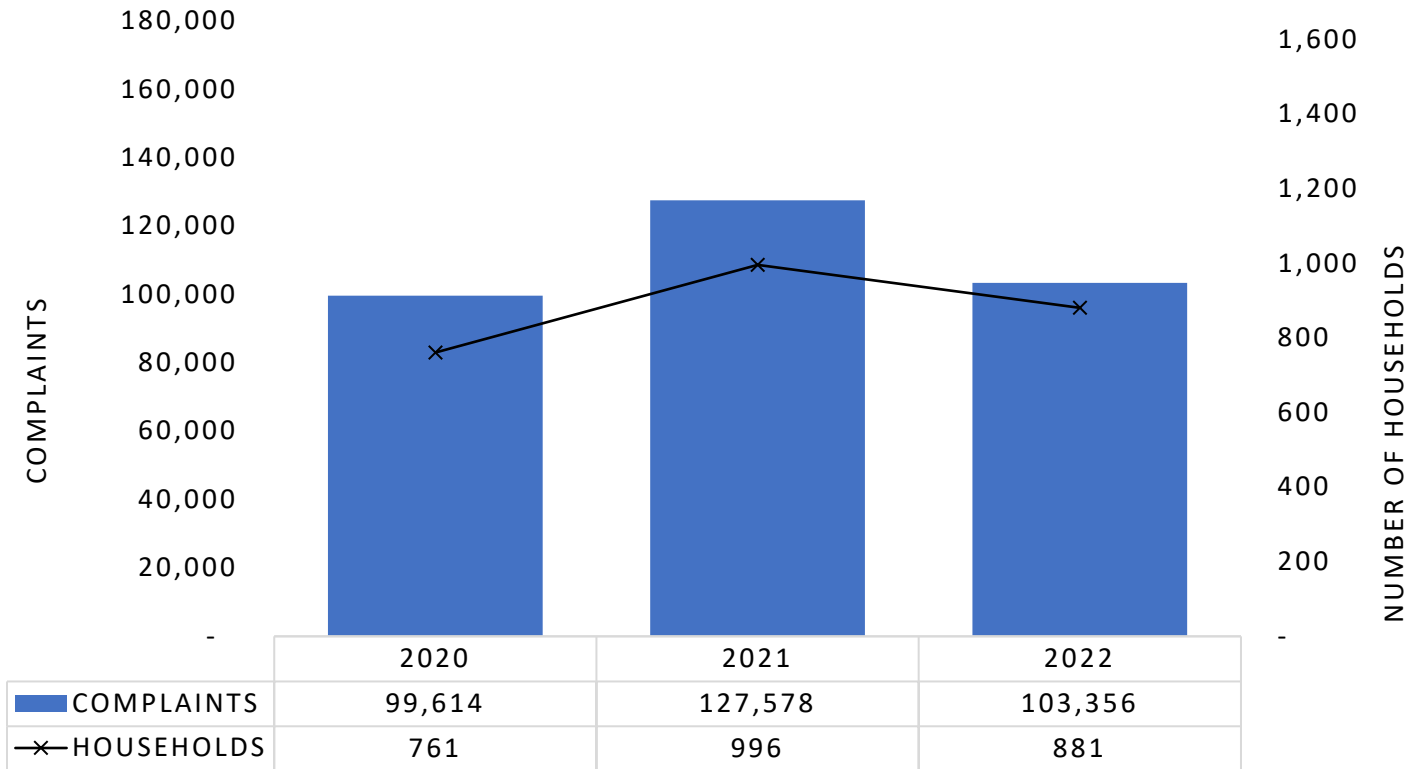


# 2022 MSP COMPLAINT DATA ASSESSMENT

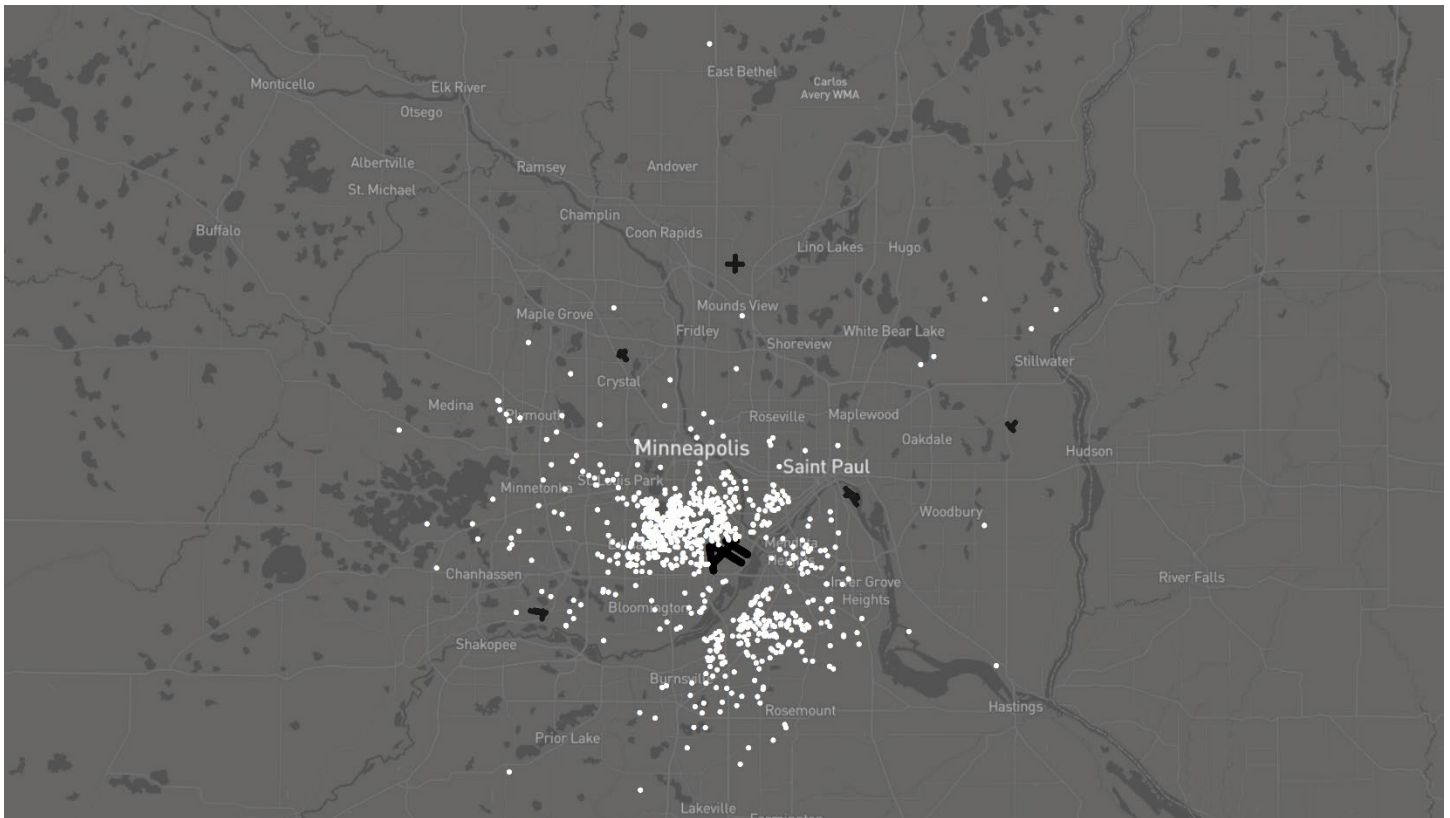
JANUARY 2023

COMMUNITY RELATIONS OFFICE

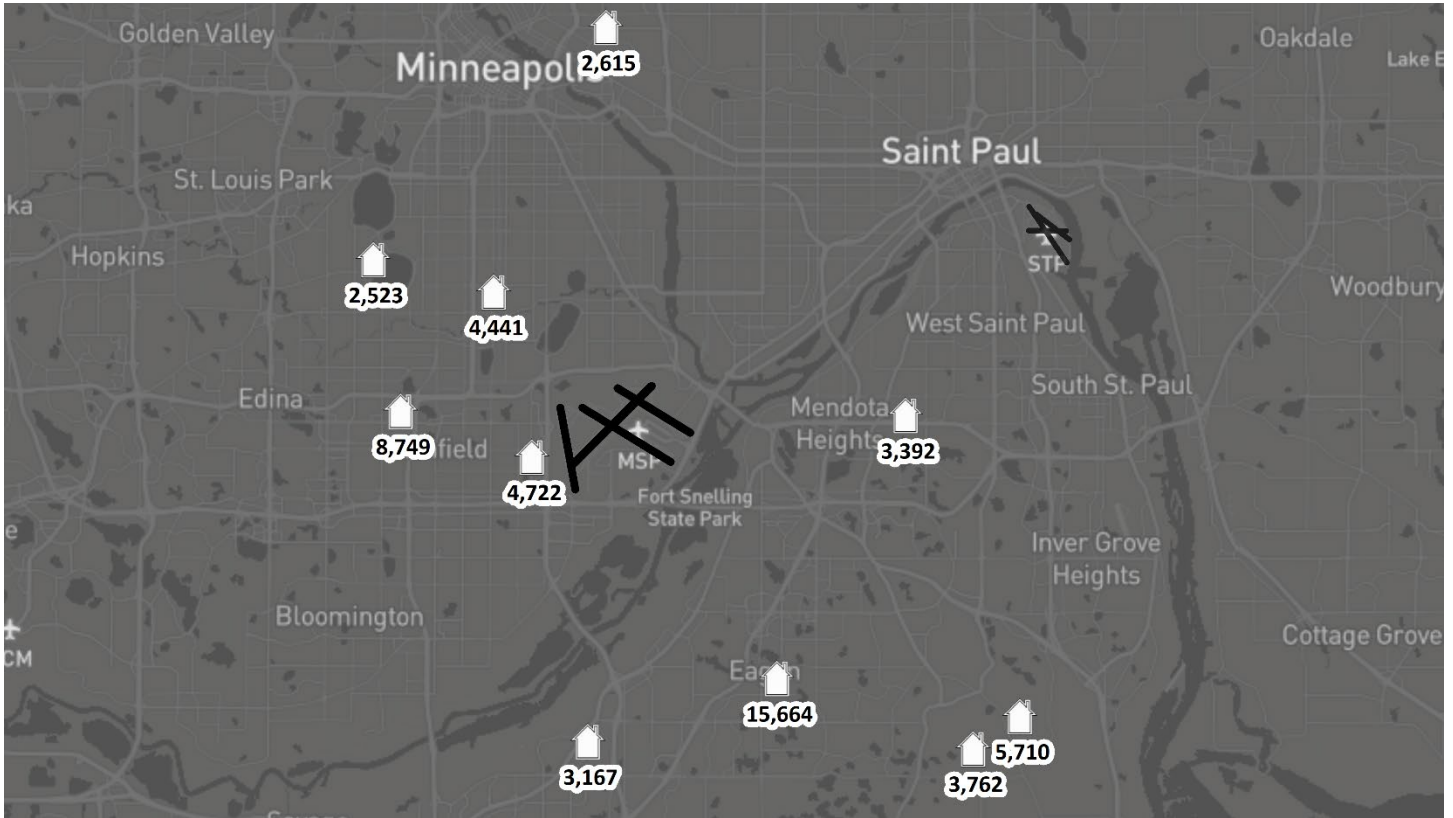
## 2020-2022 ANNUAL COMPLAINTS AND HOUSEHOLDS



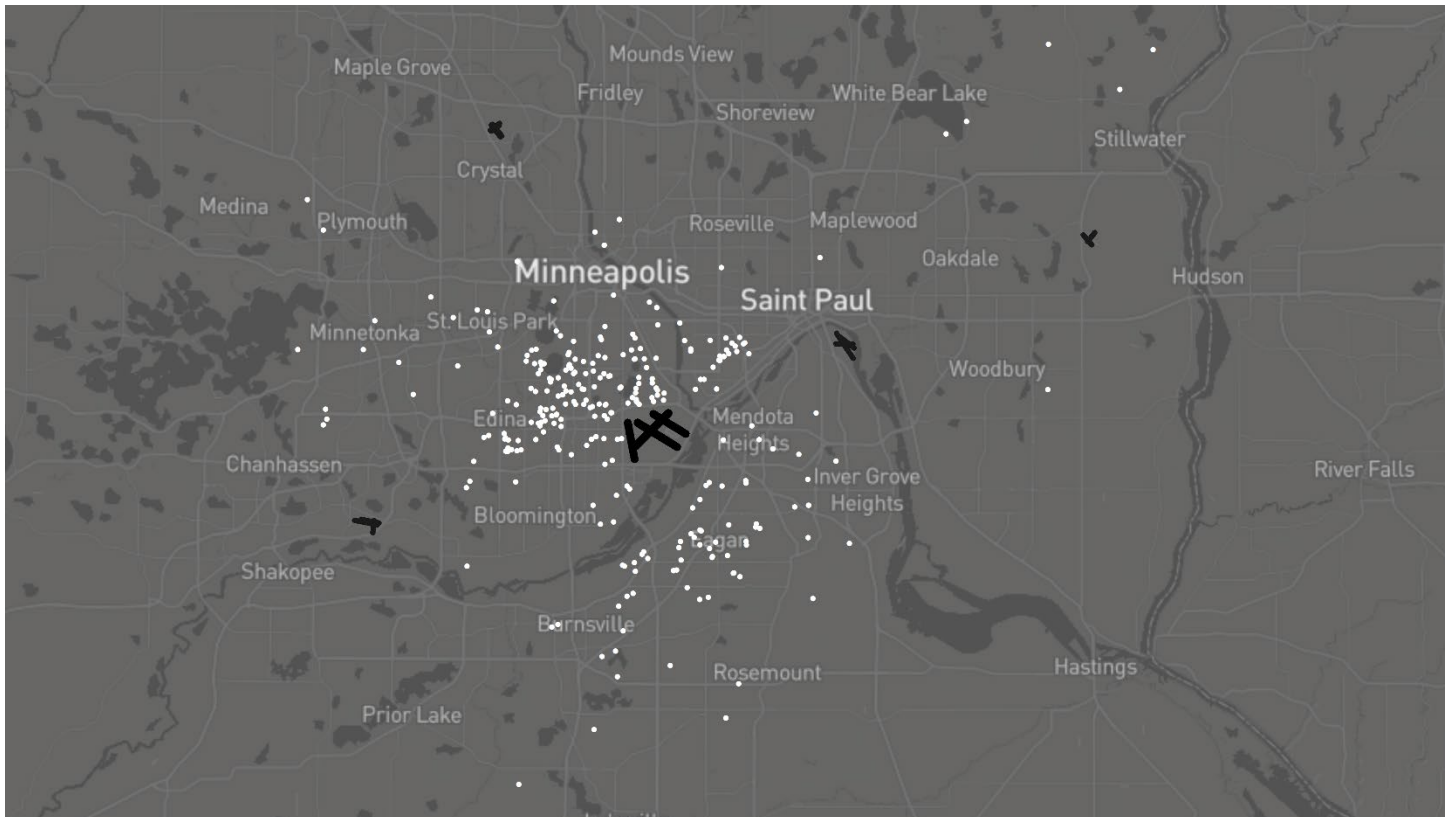
## 2022 HOUSEHOLDS FILING COMPLAINTS



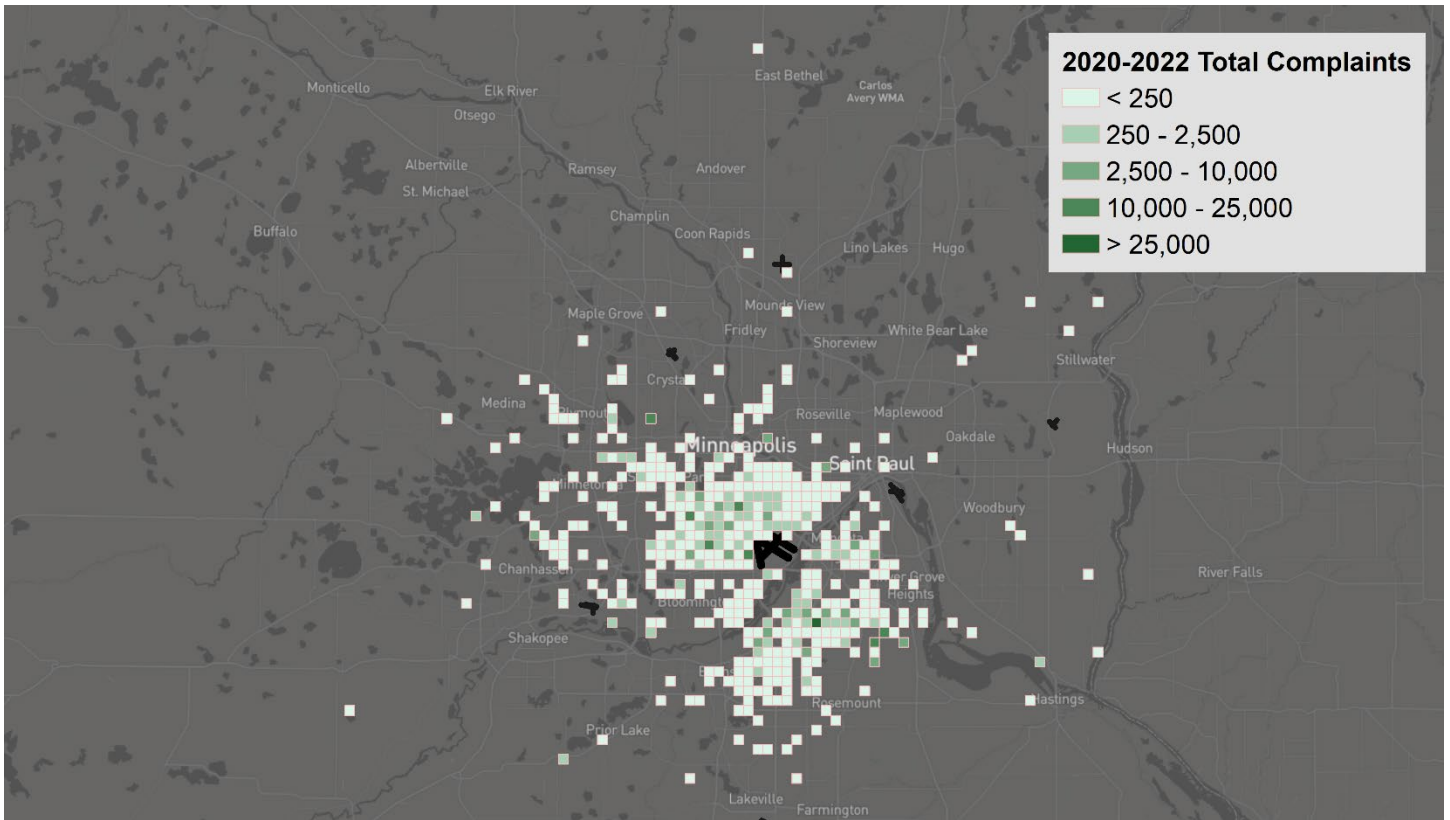
## 2022 TOP 10 HOUSEHOLDS FILING COMPLAINTS



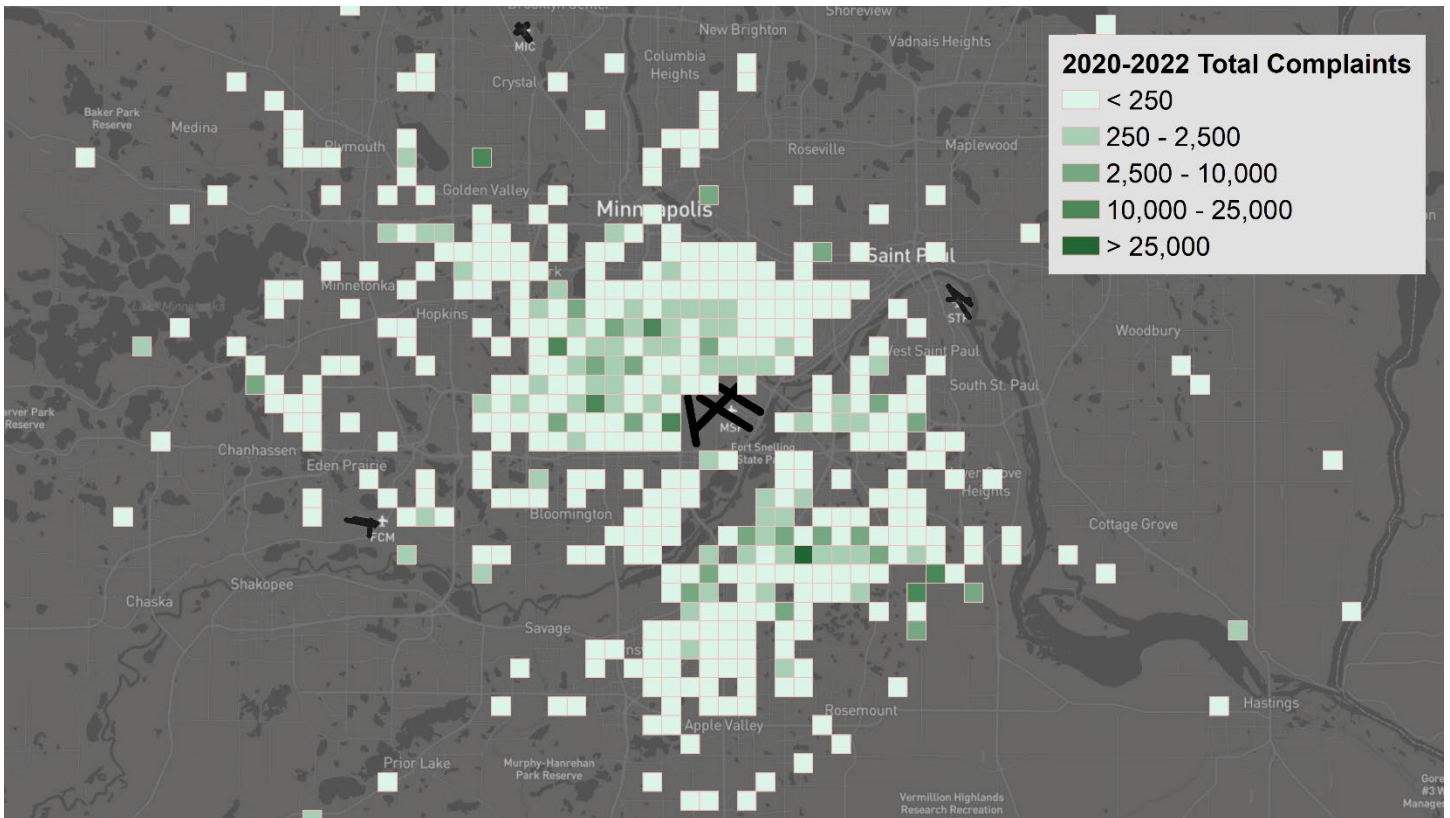
## 2022 NEW HOUSEHOLDS FILING COMPLAINTS



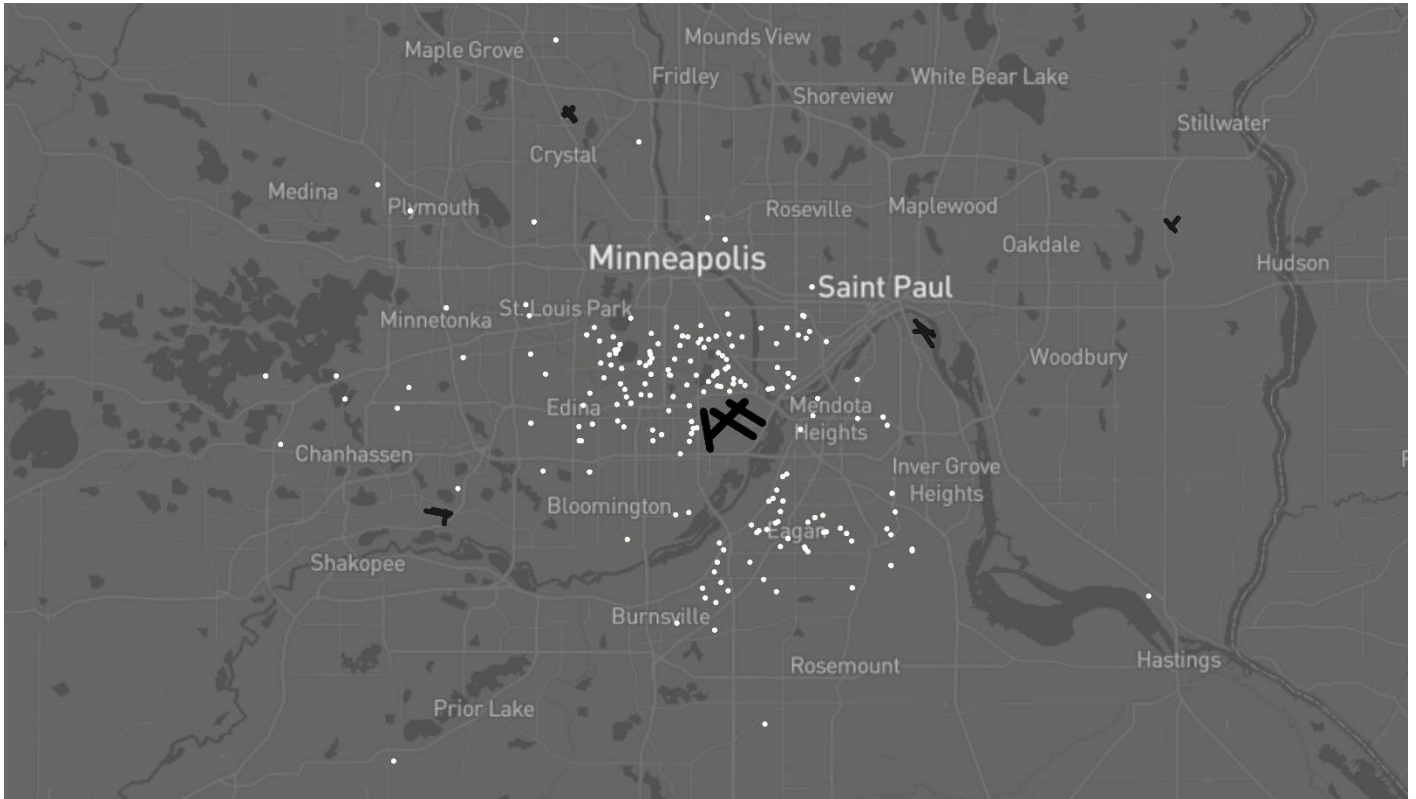
## 2020-2022 TOTAL COMPLAINTS



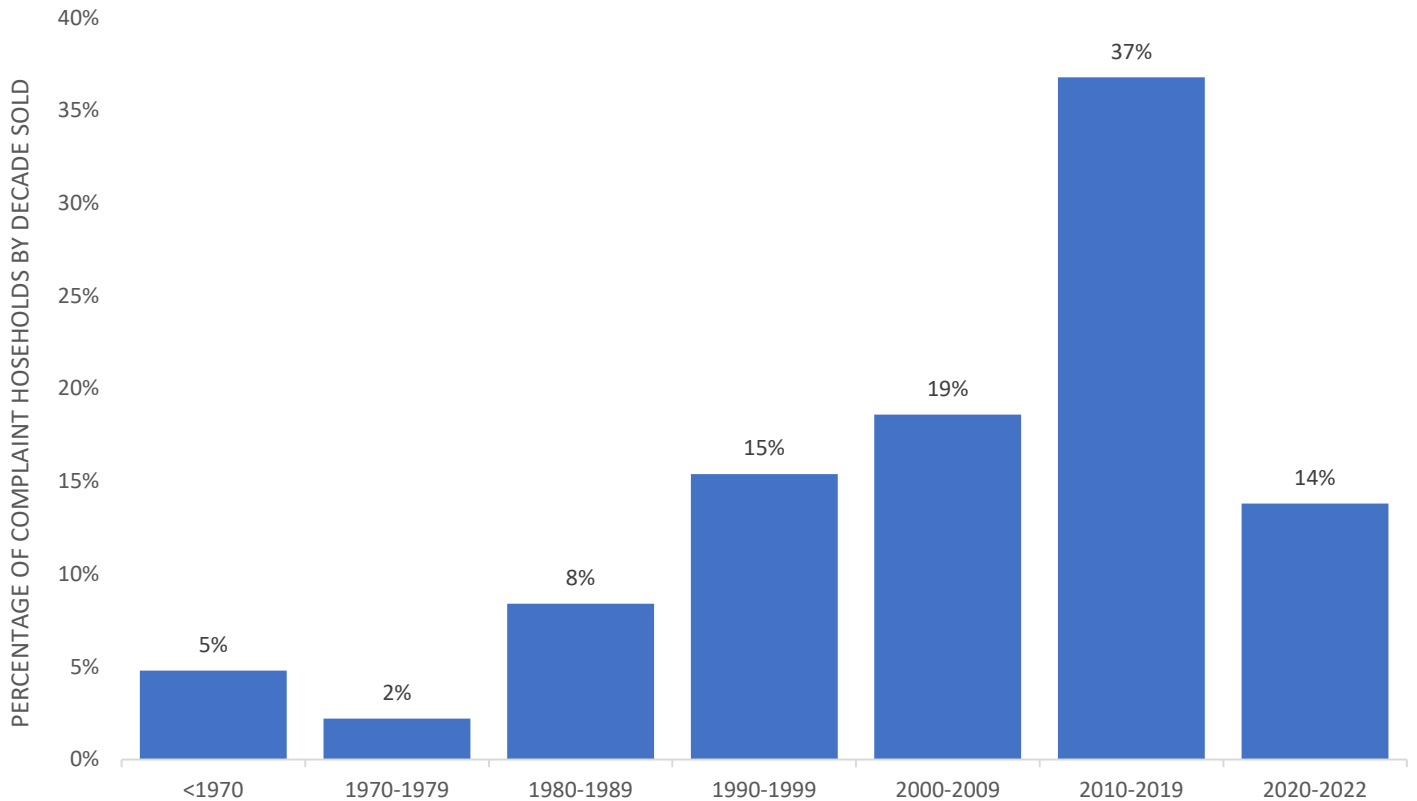
## 2020 – 2022 TOTAL COMPLAINTS



## 2022 GROUND NOISE & RUN UP COMPLAINTS

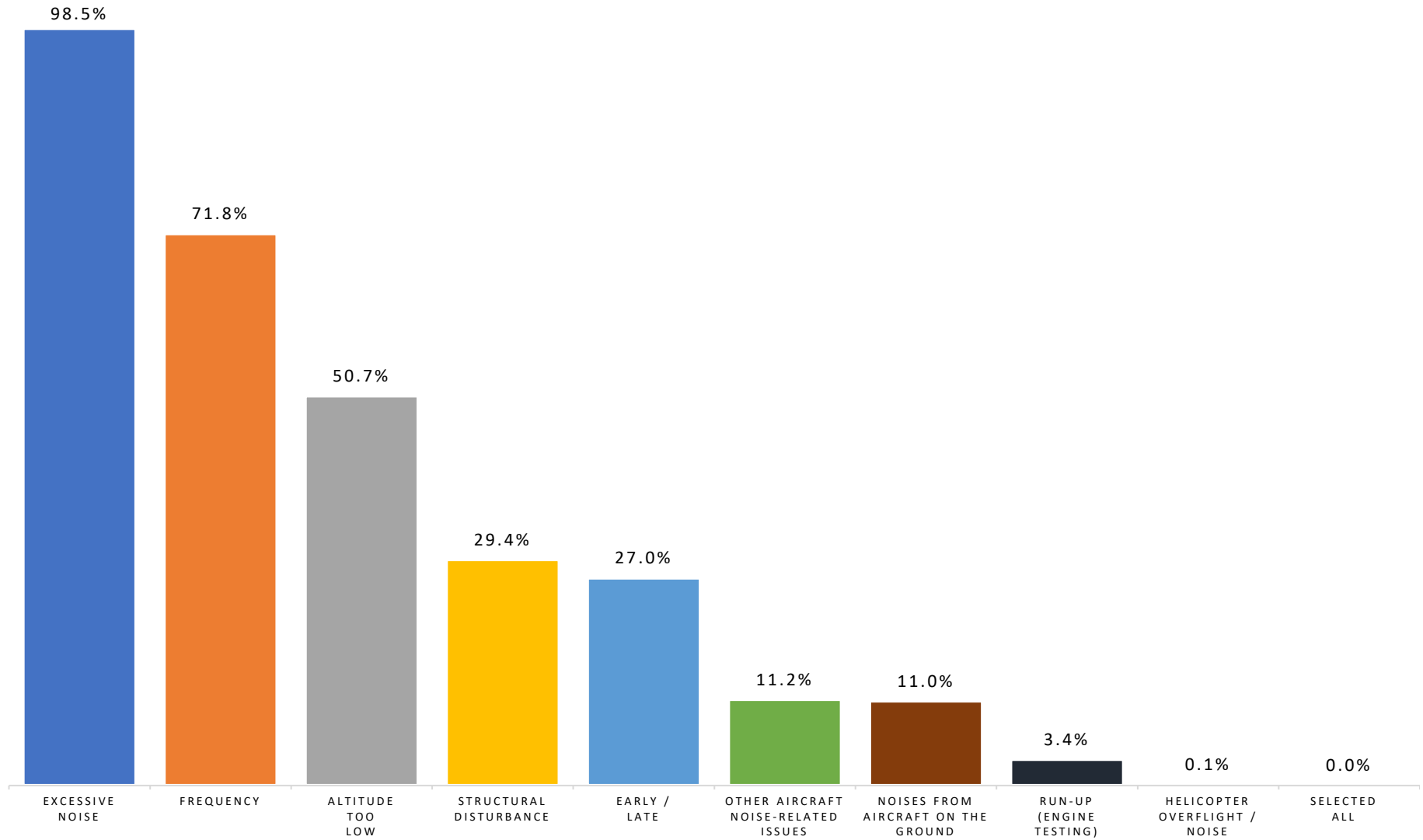


## 2022 HOUSEHOLDS FILING COMPLAINTS BY HOME PURCHASE YEAR



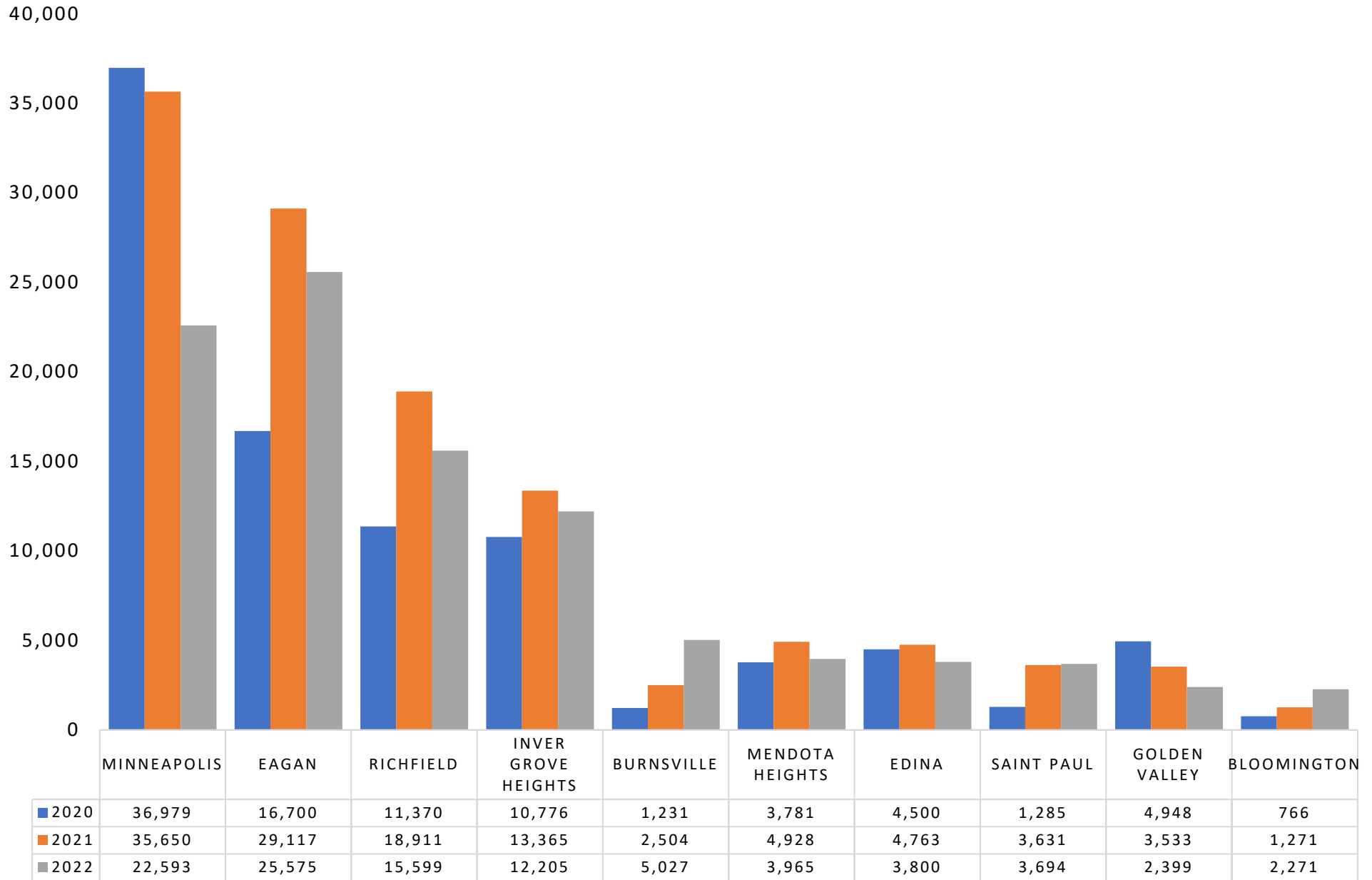
Note: single-family owner-occupied households only based on county parcel data (2022).

## 2022 COMPLAINTS FILED BY COMPLAINT REASON

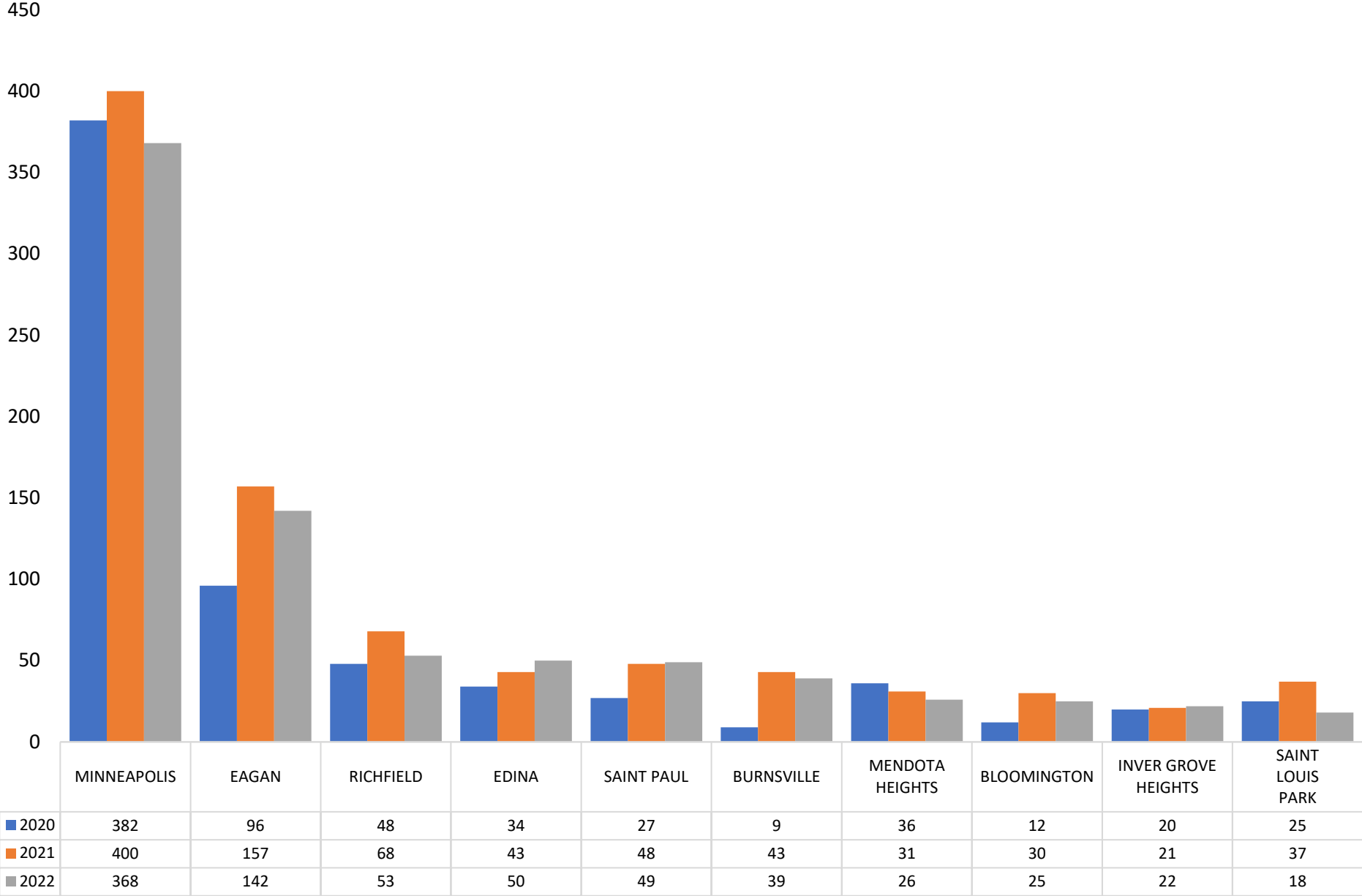


*NOTE: BECAUSE MORE THAN ONE OPTION CAN BE SELECTED, THESE DO NOT ADD UP TO 100%. SELECTED ALL INDICATES EVERY COMPLAINT TYPE SELECTED.*

## 2020-2022 COMPLAINTS FILED BY TOP 10 CITIES

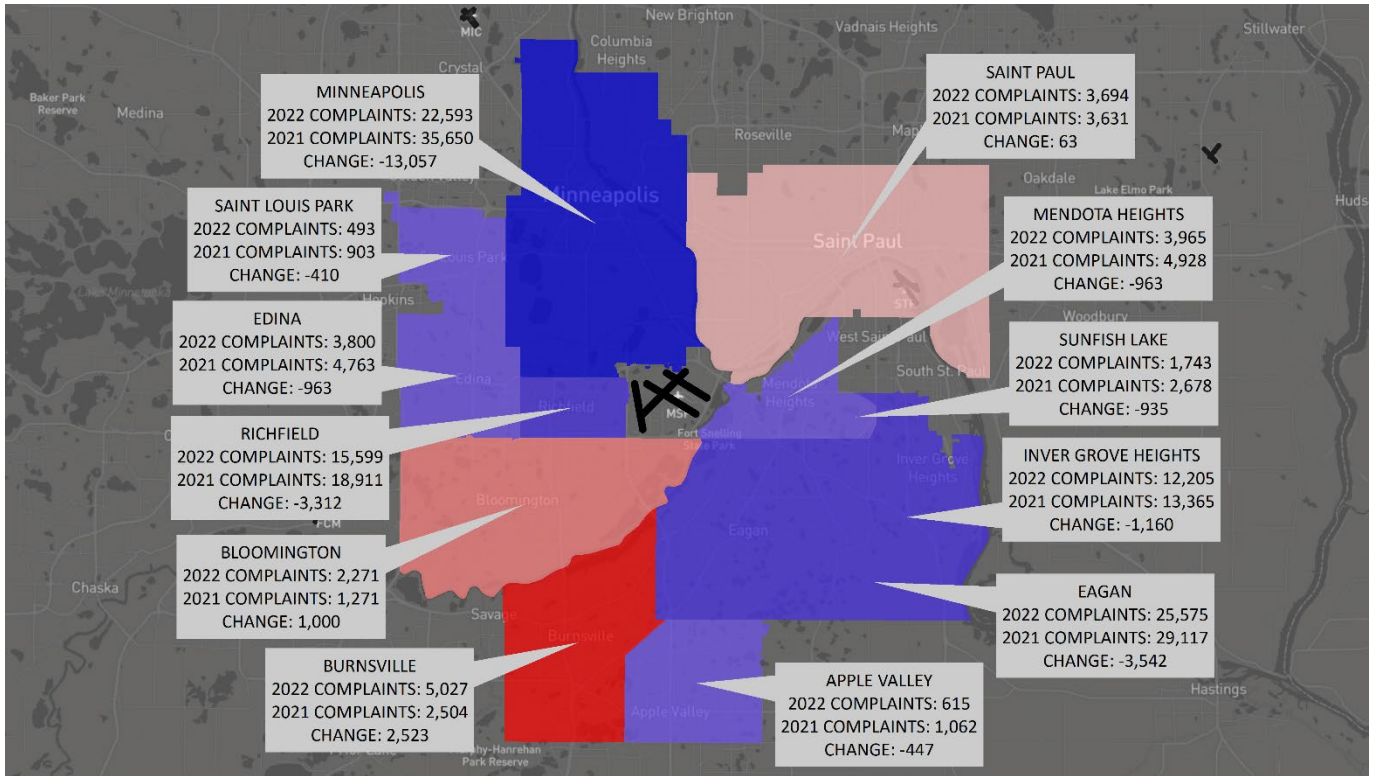


## 2020-2022 HOUSEHOLDS FILING COMPLAINTS BY TOP 10 CITIES

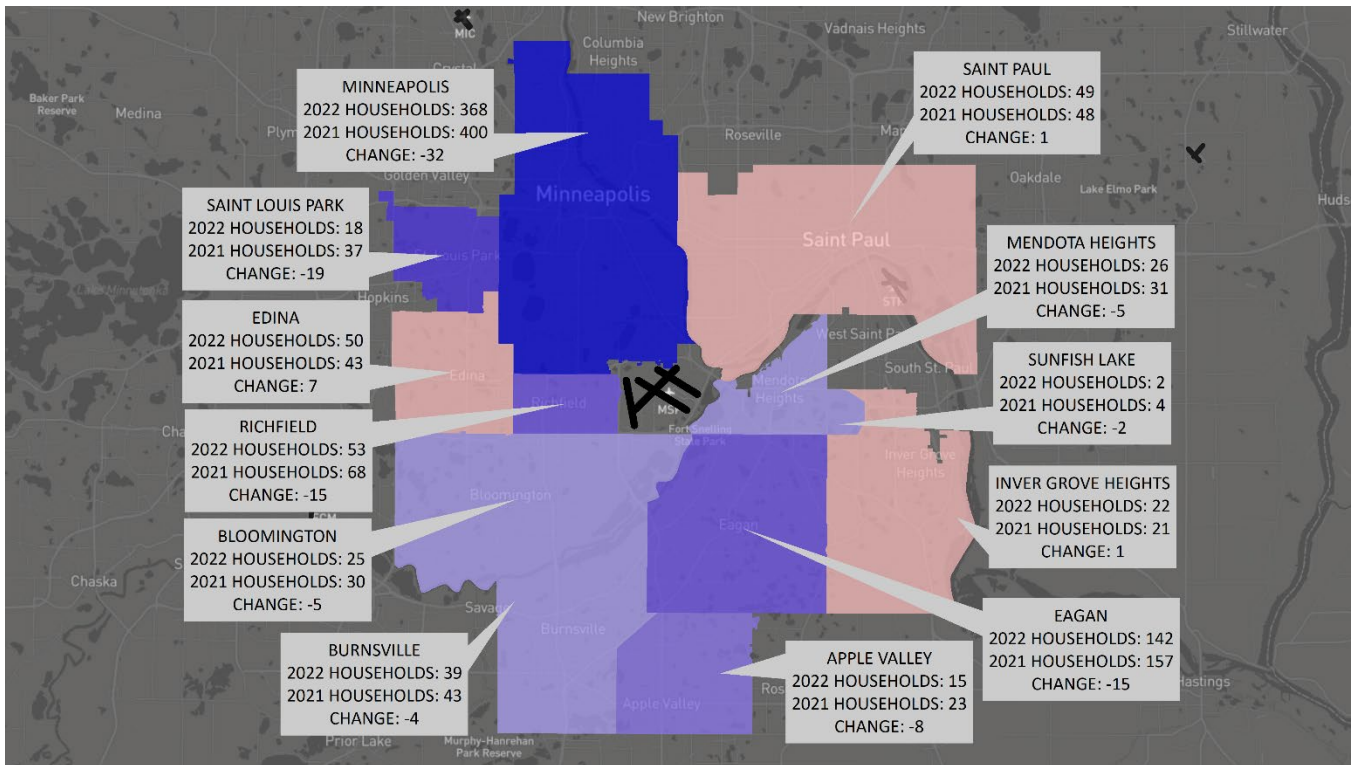




## 2021 TO 2022 COMPARISON - COMPLAINTS BY CITY



## 2021 TO 2022 COMPARISON - HOUSEHOLDS FILING COMPLAINTS BY CITY



## 2020-2022 COMPLAINTS AND OPERATIONS BY TIME OF DAY

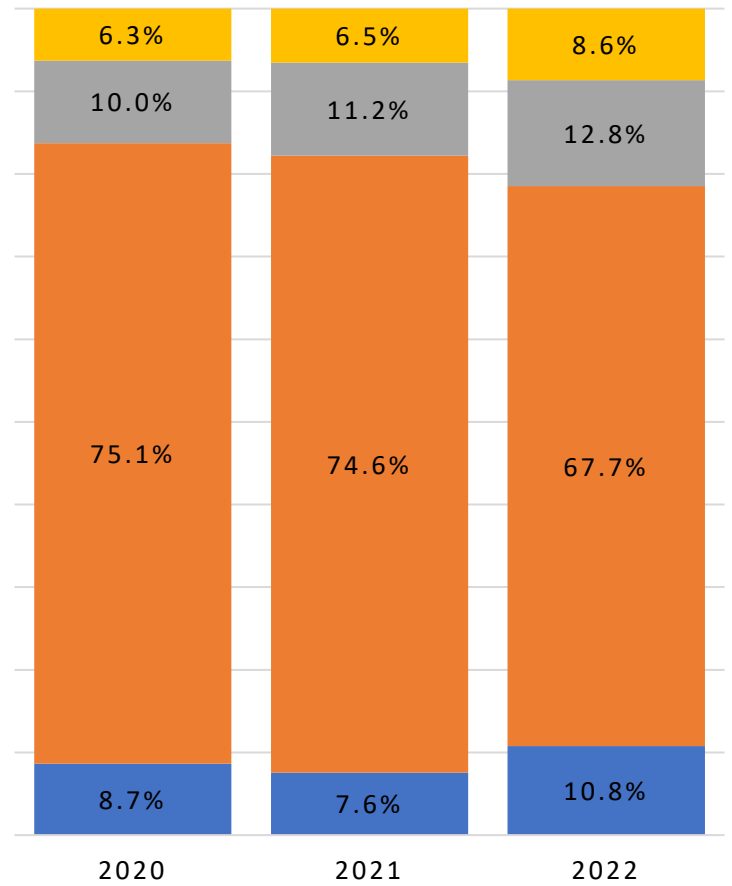
### OPERATIONS BY TIME PERIOD

■ MORNING   
 ■ DAY   
 ■ EVENING   
 ■ NIGHT



### COMPLAINTS BY TIME PERIOD

■ MORNING   
 ■ DAY   
 ■ EVENING   
 ■ NIGHT

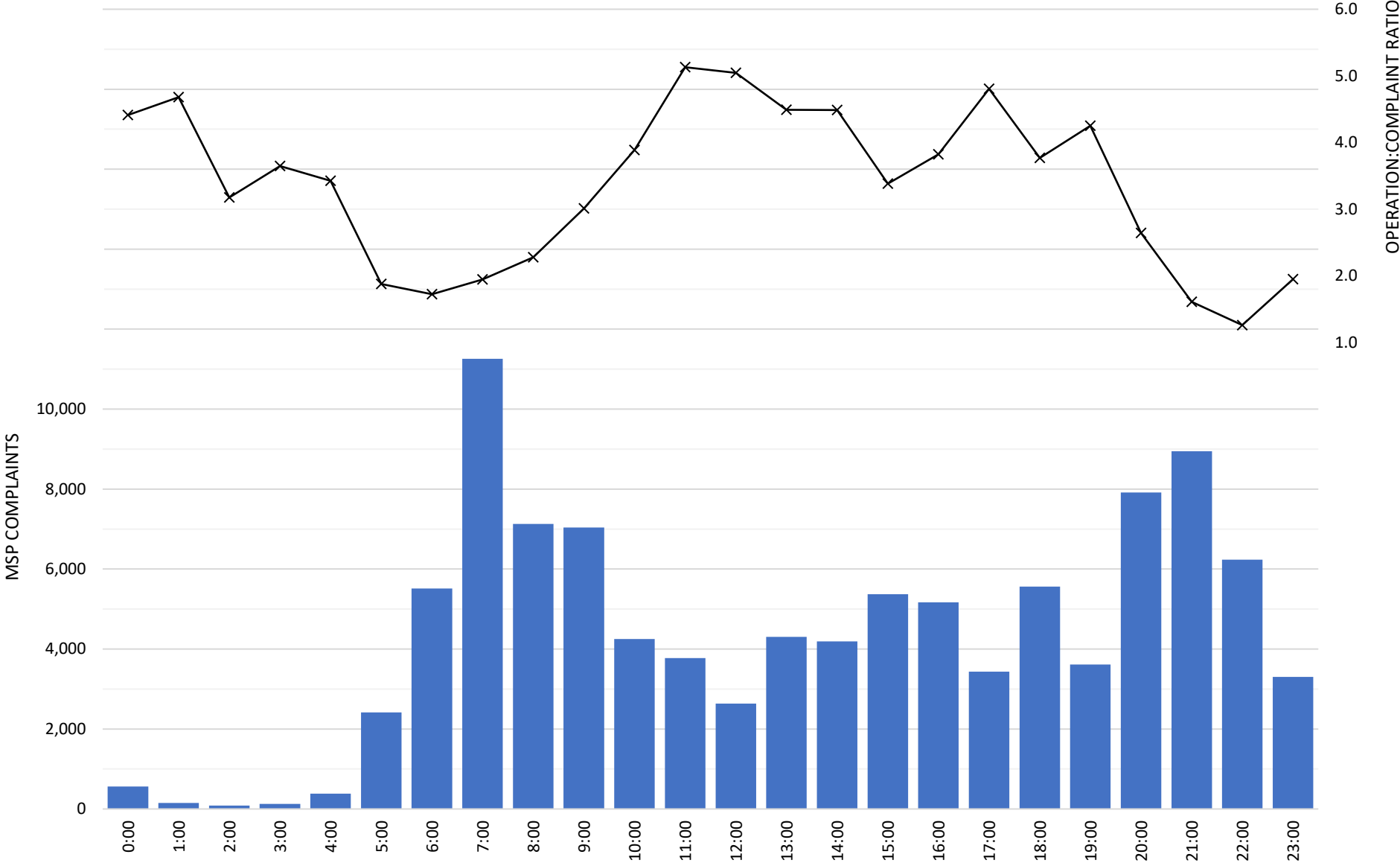


*Note:*

*Morning:* 6:00 AM – 7:30 AM  
*Day:* 7:30 AM – 9:00 PM  
*Evening:* 9:00 PM – 10:30 PM  
*Night:* 10:30 PM – 6:00 AM

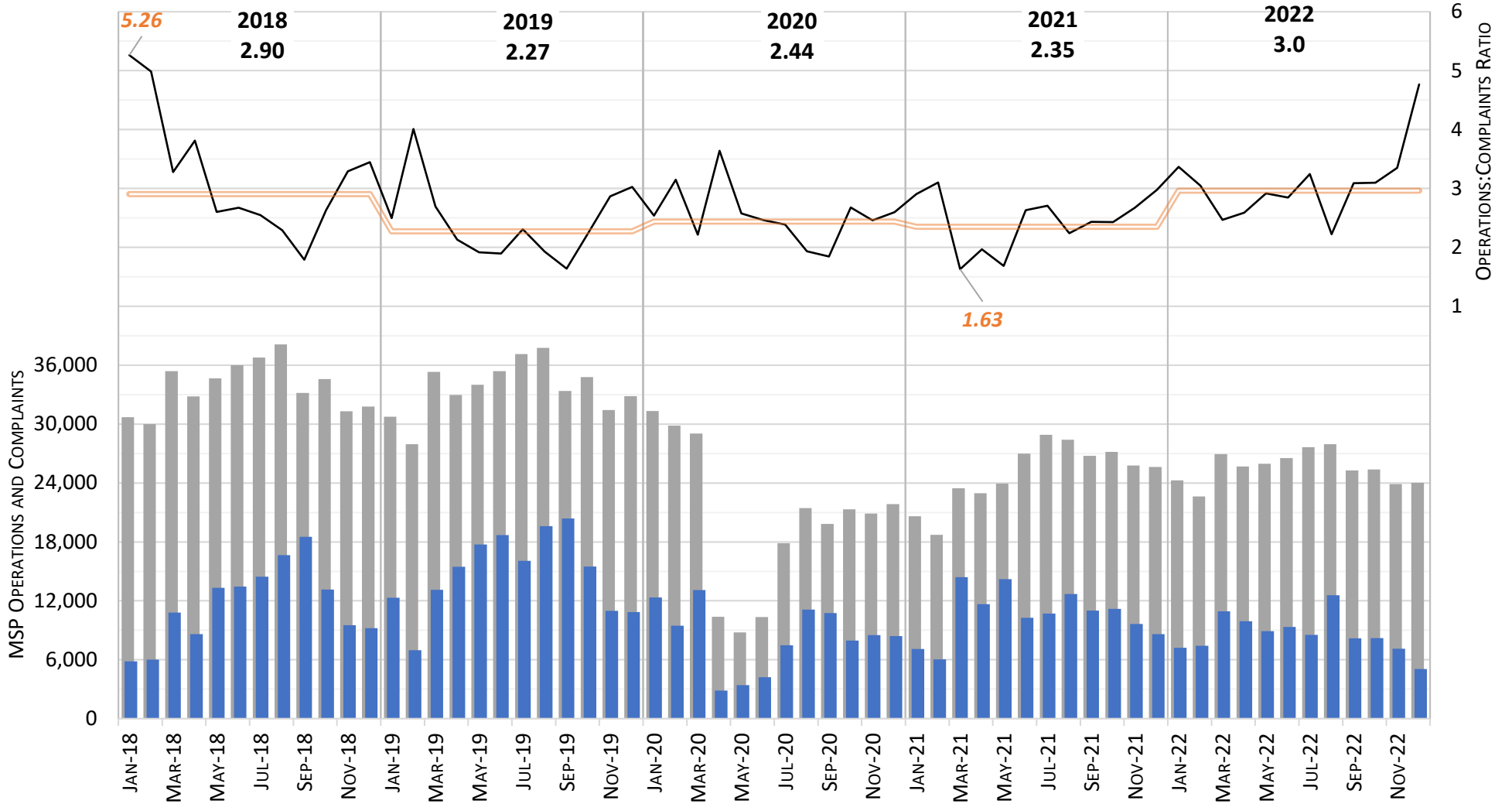
# 2022 COMPLAINTS AND OPERATION RATIO BY HOUR

COMPLAINTS RECEIVED      OPERATIONS:COMPLAINT RATIO 2022

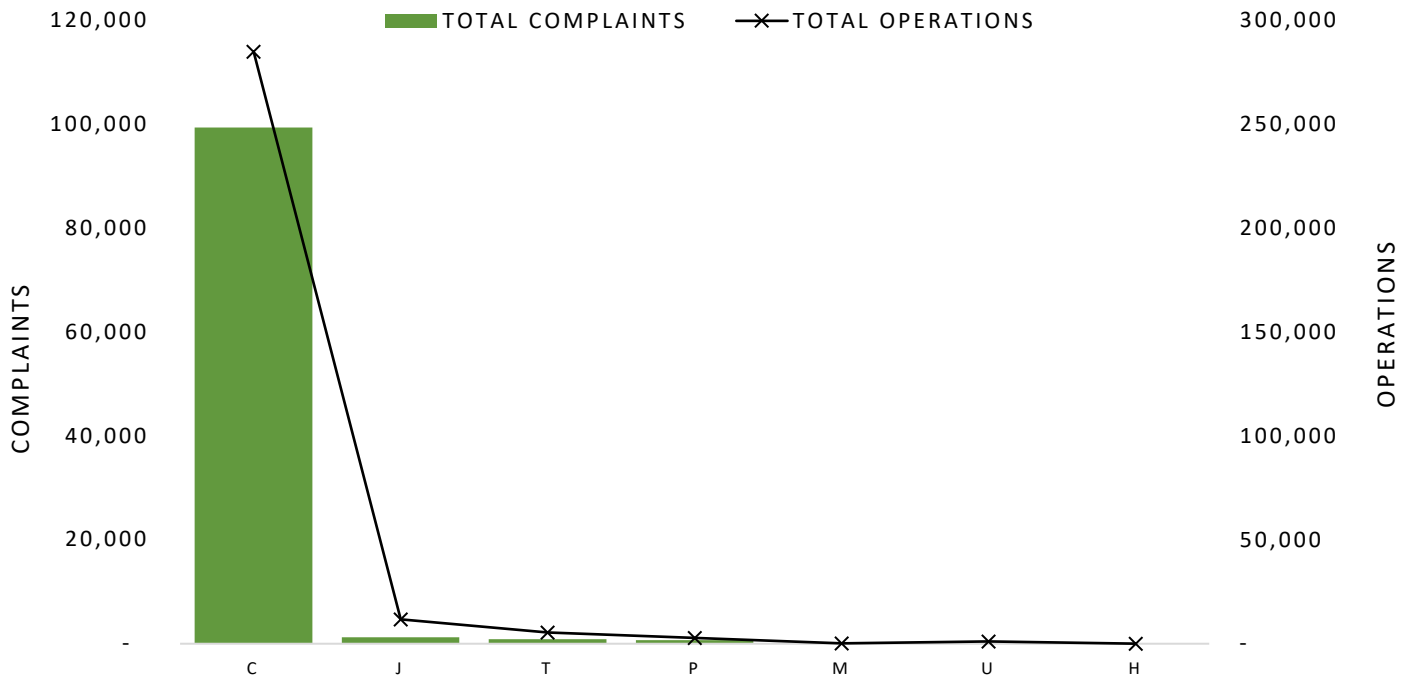


# OPERATION:COMPLAINTS MONTHLY RATIO

OPERATIONS
  COMPLAINTS
  Ops:COMPLAINTS MONTHLY RATIO
  Ops:COMPLAINTS ANNUAL RATIO

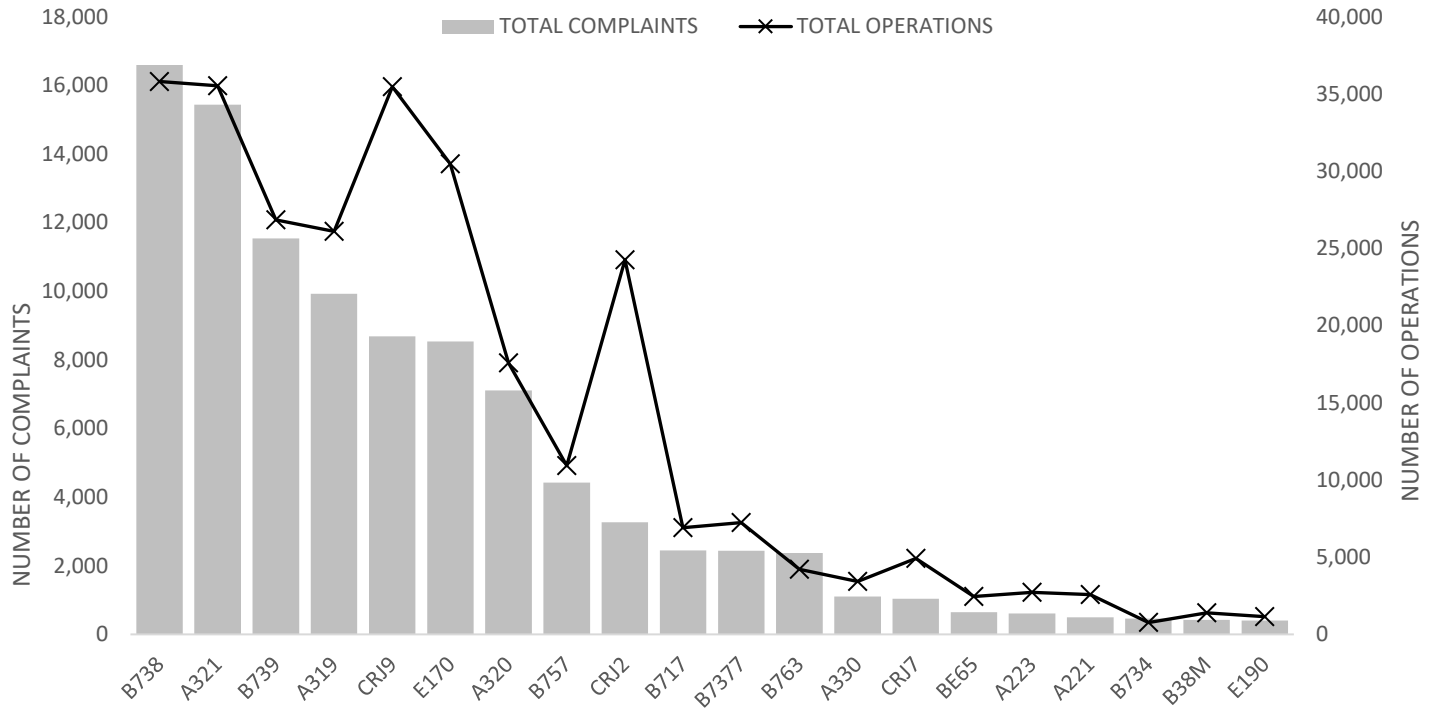


## 2022 COMPLAINTS BY AIRCRAFT CATEGORY



Operation Type	Total Operations	Total Complaints	Ratio
Commercial Jet (C)	284,965	99,330	2.9
Jet (J)	11,786	1,257	9.4
Turboprop (T)	5,371	882	6.1
Propeller (P)	2,830	696	4.1
Military (M)	138	106	1.3
Unknown (U)	1,091	45	24.2
Helicopter (H)	31	10	2.5

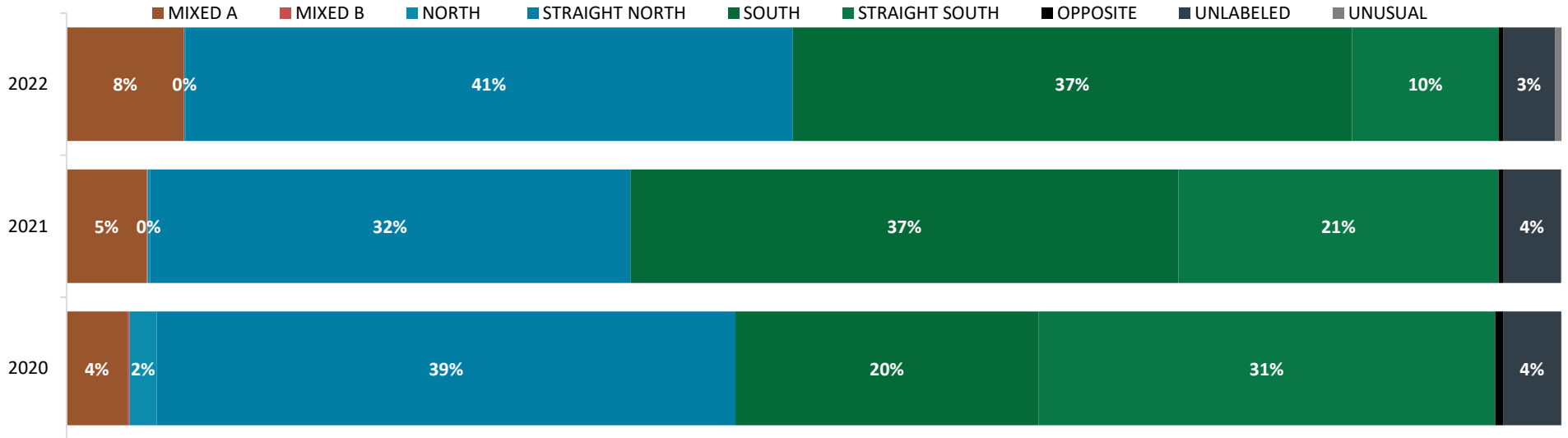
## 2022 COMPLAINTS BY AIRCRAFT TYPE



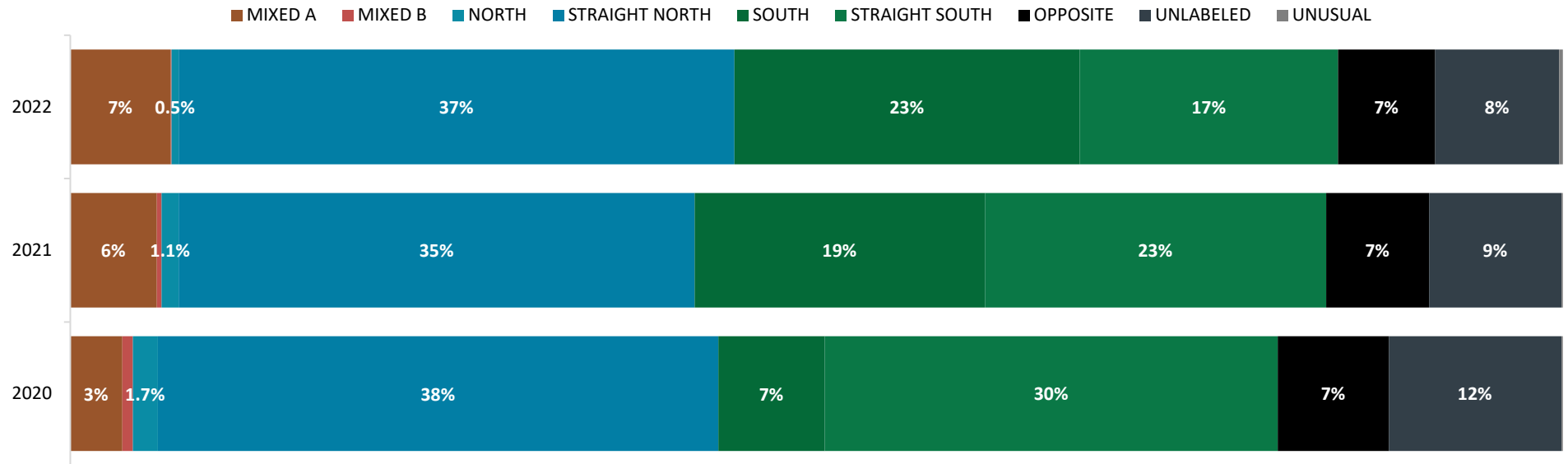
## 2022 TOP 10 FLIGHTS THAT GENERATED COMPLAINTS

Operation Number	Aircraft Type	Flight ID	Date and Time	Number of Complaints	Number of Households
27918240	F35	NAVY	6/2/2022 12:07	48	47
27688893	B738	SCX745	3/20/2022 8:15	11	8
27931990	B763	FDX1618	6/6/2022 21:57	9	8
27683054	A320	NKS772	3/18/2022 6:51	11	7
28219819	B738	AAL1578	8/1/2022 21:47	15	7
28530536	MD11	UPS559	10/31/2022 21:48	8	7
28017434	A321	DAL2326	6/29/2022 21:24	7	7
28446551	B734	ASH185	10/5/2022 22:07	7	7
28229927	MD11	UPS559	8/12/2022 21:43	7	7
28528440	B738	AAL1325	10/31/2022 6:16	7	7

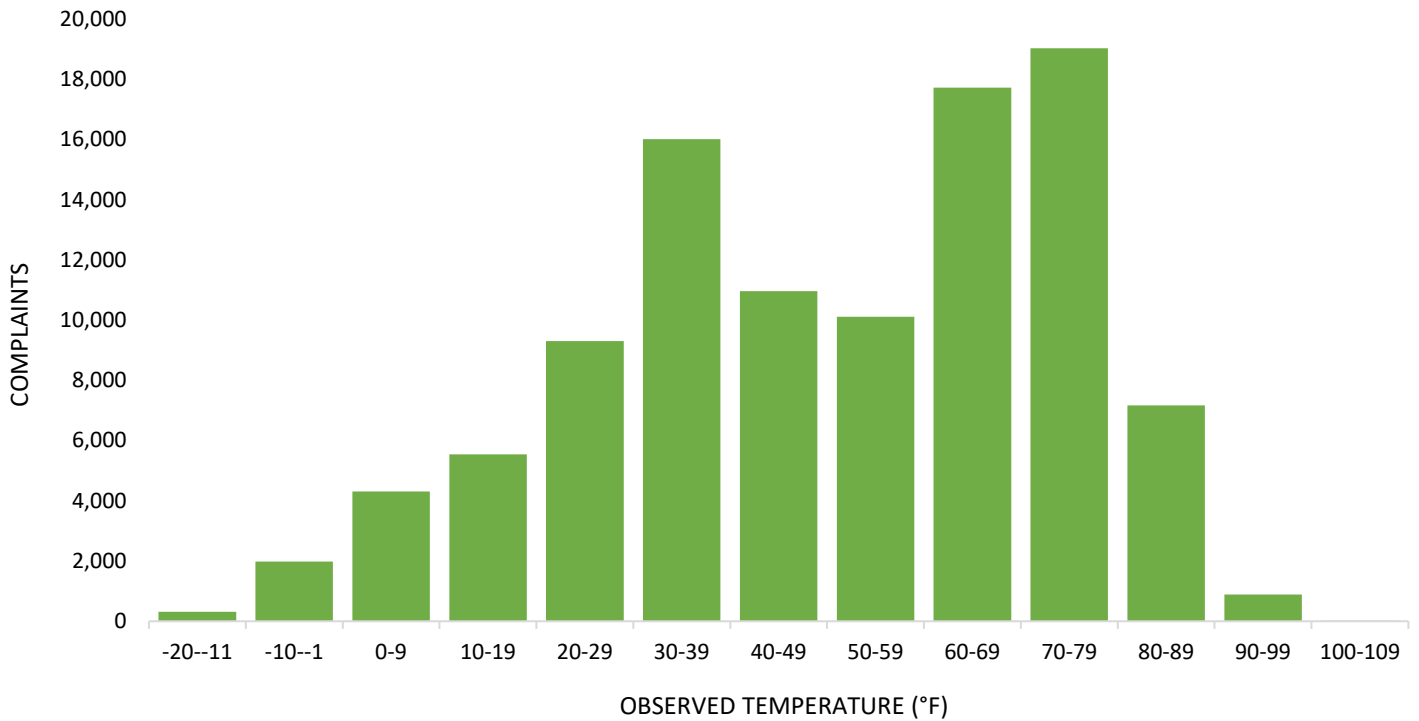
## 2020-2022 COMPLAINTS BY FLOW



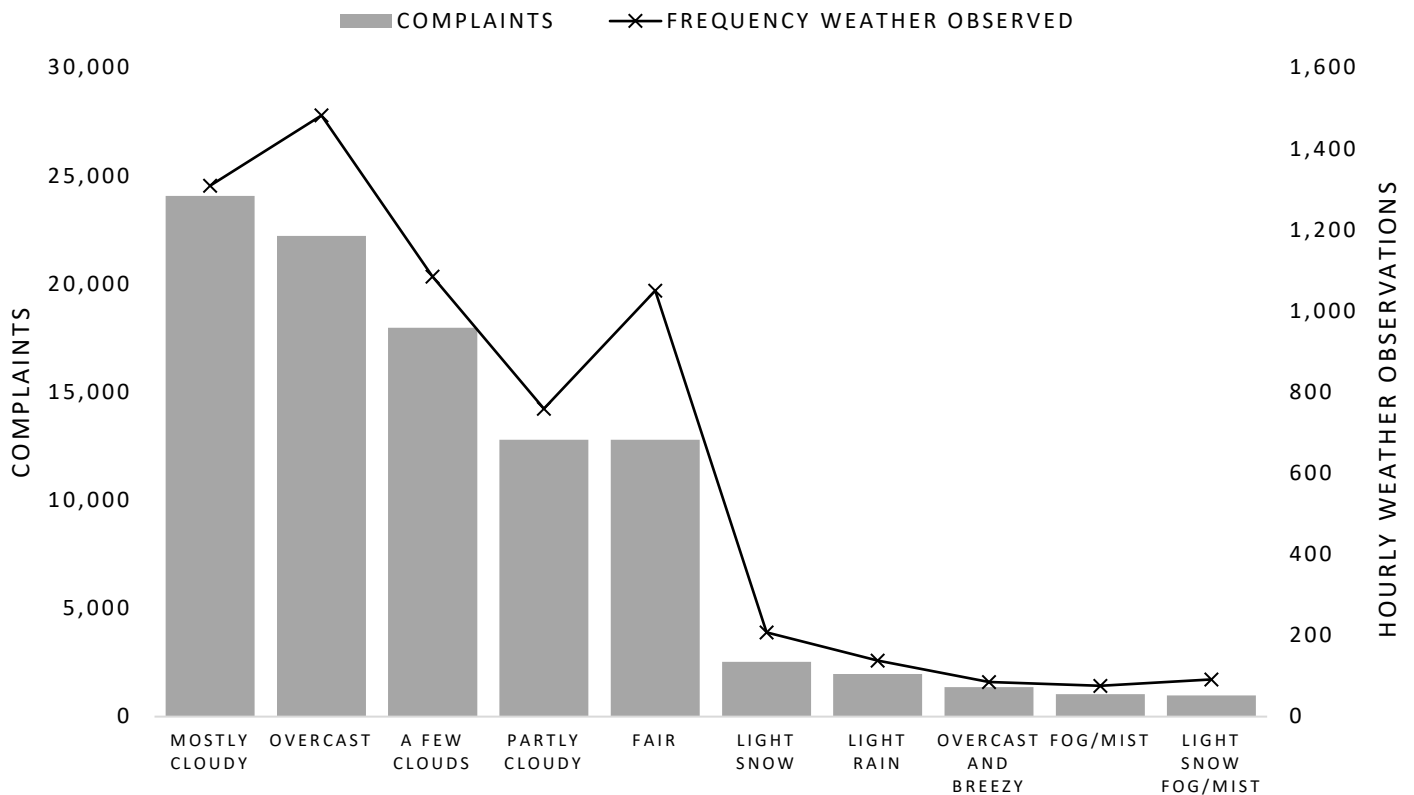
## 2020-2022 TOTAL FLOW



## 2022 COMPLAINTS BY TEMPERATURE



## 2022 COMPLAINTS BY WEATHER







**Metropolitan Airports Commission**

6040 28th Avenue South, Minneapolis, MN 55450

[metroairports.org](http://metroairports.org)

*This report is for informational purposes only.*