

Minneapolis • Saint Paul
INTERNATIONAL AIRPORT

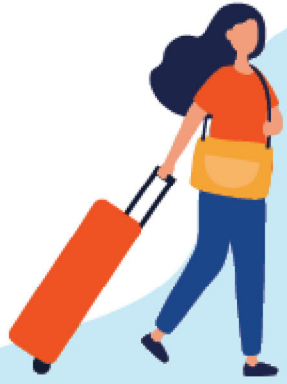


2023



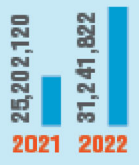
156

Nonstop destinations
2021 137 2022 145



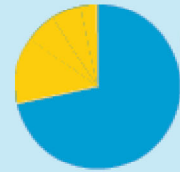
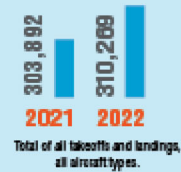
34,770,800

Passengers total



323,929

Operations



Enplanement Type

68% Originating
32% Connecting
2021 67% / 33% 2022 69% / 31%

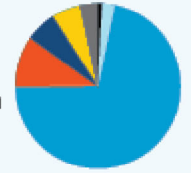
798

Average daily passenger aircraft operations

2021 741 2022 756

Airline passenger market share

70.28%	Delta	4.36%	American
11.30%	Sun Country	1.32%	Spirit
4.91%	Southwest	3.27%	Other
4.56%	United		



2,984,169 / 31,786,631

International versus domestic passengers

2021	International	740,879
	Domestic	24,461,241
2022	International	2,039,809
	Domestic	29,202,013



Average daily departing seats

56,823

2021 45,878
2022 50,833



203,643

Total cargo

2021 234,747
2022 237,430

January 2024



@mspairport



metroairports.org