

NOTICE OF PUBLIC COMMENT PERIOD AND PUBLIC HEARING FOR DRAFT LAKE ELMO AIRPORT ZONING ORDINANCE

The Joint Airport Zoning Board (JAZB) for Lake Elmo Airport is developing an *Airport Zoning Ordinance* for land uses in the vicinity of the Airport (*Draft Airport Zoning Ordinance*). The goal is to develop a zoning ordinance that achieves a balance between providing for a reasonable level of safety while allowing for compatible community development. The zoning is being conducted as required by Minnesota Statutes 360.061 – 360.074.

The *Draft Airport Zoning Ordinance* would:

- Limit the height of structures and vegetation out to approximately 1.5 miles from the outer boundaries of the Airport. In most cases, however, the airport zoning height limitations would be less restrictive than maximum heights allowed in the applicable municipal zoning code.
- Regulate certain land uses as described below:
 - Prohibit in JAZB Safety Zone 1 the development of buildings, other structural hazards, and land uses that create assemblies of people. JAZB Safety Zone 1 is fully contained to airport-owned property and off-airport property guided to be non-occupant Public/Semi-Public open space in the City of Lake Elmo.
 - Prohibit in JAZB Safety Zone 2 land uses that (i) create or cause interference with the operations of radio or electronic facilities on the Airport or with radio or electronic communications between the Airport and aircraft, (ii) make it difficult for pilots to distinguish between Airport lights and other lights, (iii) result in glare in the eyes of pilots using the Airport, (iv) impair visibility in the vicinity of the Airport, (v) are deemed a “hazard” to air navigation by the Federal Aviation Administration or Minnesota Department of Transportation, or (vi) otherwise endanger the landing, taking off, or maneuvering of aircraft. The *Draft Zoning Ordinance* does not seek to prohibit the use of rooftop solar panels on homes or restrict the use of FCC-approved amateur radio stations.

Maps in the *Draft Airport Zoning Ordinance* show the precise boundaries for application of the *Draft Airport Zoning Ordinance* and the associated proposed restrictions. A summary map showing the proposed JAZB Safety Zones 1 and 2 is shown on the reverse side of this notice.

THE PUBLIC COMMENT PERIOD ON THE DRAFT AIRPORT ZONING ORDINANCE WILL COMMENCE ON THURSDAY, JANUARY 9, 2020, AND CLOSE ON FRIDAY, FEBRUARY 7, 2020. During this period, written comments will be accepted and must be addressed to:

Secretary to the Lake Elmo Joint Airport Zoning Board
c/o Metropolitan Airports Commission
6040 28th Avenue South
Minneapolis, MN 55450

Comments can also be emailed to lake-elmo.zoning@mspmack.org

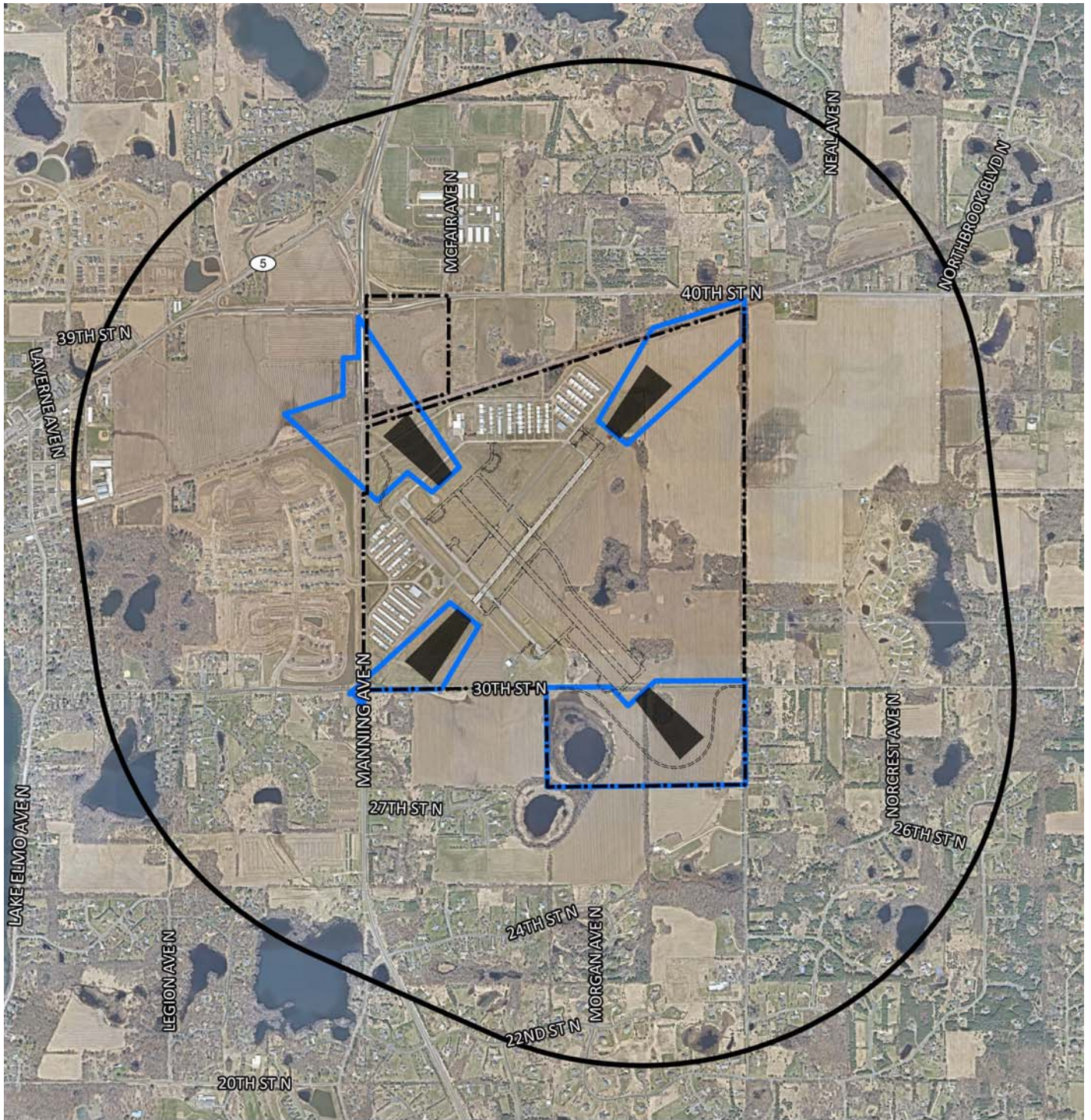
A PUBLIC HEARING ON THE DRAFT AIRPORT ZONING ORDINANCE IS SCHEDULED FOR THURSDAY, JANUARY 23, 2020, AT THE OAK-LAND MIDDLE SCHOOL CAFETERIA, 820 MANNING AVENUE NORTH, LAKE ELMO. THE PUBLIC HEARING WILL BEGIN AT 6:30 P.M. AND LAST UNTIL ALL PERSONS WISHING TO ADDRESS THE BOARD HAVE BEEN HEARD. AN OPEN HOUSE WILL BE HELD PRIOR TO THE PUBLIC HEARING STARTING AT 5:15 P.M. FOLLOWED BY A PUBLIC PRESENTATION FROM 6:15 P.M. TO 6:30 P.M.


Copies of the *Draft Airport Zoning Ordinance* will be available for review beginning on Thursday, January 9, 2020 at the following locations: the Metropolitan Airports Commission’s Main Office, 6040 28th Avenue South, Minneapolis; the City Halls of Lake Elmo and Oak Park Heights; the Baytown Community Center, 4020 McDonald Drive N., Stillwater; Lake Elmo Aero, 3275 Manning Avenue N, Lake Elmo; and the Lake Elmo Library, 3537 Lake Elmo Avenue N, Lake Elmo. The *Draft Airport Zoning Ordinance* will also be available for review on the MAC website at:

<https://metroairports.org/general-aviation/airports/lake-elmo/joint-airport-zoning-board-lake-elmo>

For further information about the public comment period, the open house or the public hearing, please call Kristin Berwald, Secretary to the Lake Elmo Joint Airport Zoning Board, at (612) 726-8144.

DRAFT LAKE ELMO AIRPORT ZONING ORDINANCE – JAZB SAFETY ZONES



-  Airport Property Line
-  JAZB Zone 1
-  Future Improvements
-  JAZB Zone 2
-  Runway Protection Zones (RPZ)