



# Lake Elmo Airport

## CONSTRUCTION NEWS

### Learn More:

Project newsletters including construction updates and photos will be posted regularly during construction on the airport website.

[metroairports.org/general-aviation/airports/lake-elmo/lake-elmo-airport-construction](http://metroairports.org/general-aviation/airports/lake-elmo/lake-elmo-airport-construction)

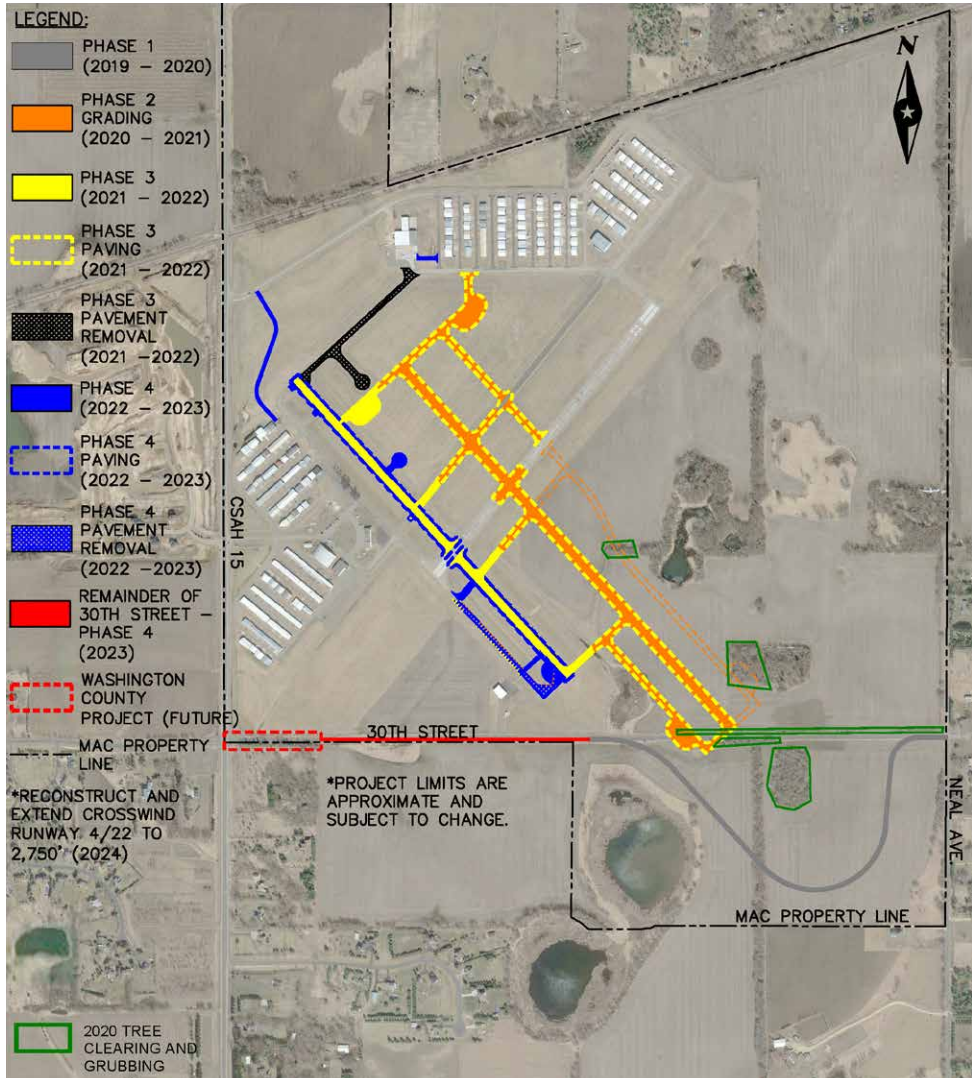
### Long Term Comprehensive Plan (LTCP):

[metroairports.org/general-aviation/airports/lake-elmo-airport](http://metroairports.org/general-aviation/airports/lake-elmo-airport)

### Environmental Assessment/Environmental Assessment Worksheet (EA/EAW):

[metroairports.org/general-aviation/airports/lake-elmo/lake-elmo-environmental-assessment/documents-and-links](http://metroairports.org/general-aviation/airports/lake-elmo/lake-elmo-environmental-assessment/documents-and-links)

If you have questions about the project, please contact us via email at [ContactLakeElmoAirportEA@mspmac.org](mailto:ContactLakeElmoAirportEA@mspmac.org)



## PROJECT SCHEDULE

### phase 1

Realign 30th Street N  
**Substantially complete.**

Punchlist items and project close-out in process.

### phase 2

Runway 14/32 Replacement & Airfield Modifications  
**Fall 2020 through Summer 2021**

Construction grading of new runways and taxiways.

Installation of new airport fence is in progress. Tree clearing will take place in March 2021.

### phase 3

Runway 14/32 Replacement  
**Fall 2021 through Summer 2022**

Completion of new Runway 14/32 and new taxiways.

### phase 4

Runway 14/32 Replacement  
**Fall 2022 through Summer 2023**

Completion of taxiway modifications, conversion of existing runway to parallel taxiway, and service roads.