



Lake Elmo Airport

CONSTRUCTION NEWS

Learn More:

Project newsletters including construction updates and photos will be posted regularly during construction on the airport website.

metroairports.org/general-aviation/airports/lake-elmo/lake-elmo-airport-construction

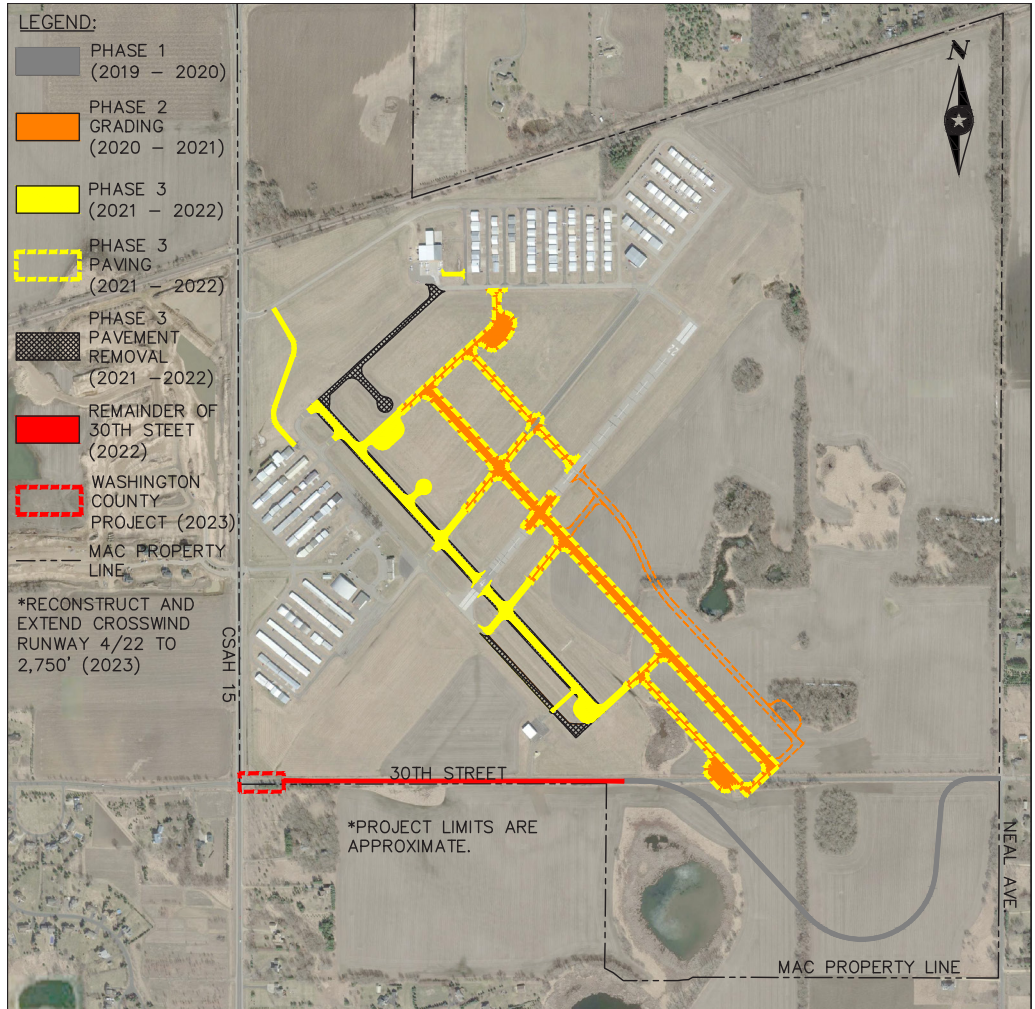
Long Term Comprehensive Plan (LTCP):

metroairports.org/general-aviation/airports/lake-elmo-airport

Environmental Assessment/Environmental Assessment Worksheet (EA/EAW):

metroairports.org/general-aviation/airports/lake-elmo-airport-environmental-assessment/documents-and-links

If you have questions about the project, please contact us via email at ContactLakeElmoAirportEA@mspmac.org



PROJECT SCHEDULE

phase 1

Realign 30th Street N
November 2019 through July 2020

Project was substantially complete in July 2020. Coordination with the contractor is on-going for completion of punchlist items.

phase 2

Runway 14/32 Replacement & Airfield Modifications
Fall 2020 through Summer 2021

Construction to begin fall of 2020, dependent on permit approval.

phase 3

Runway 14/32 Replacement
Fall 2021 through Summer 2022

Completion of new Runway 14/32 and taxiways and convert existing runway to parallel taxiway.